

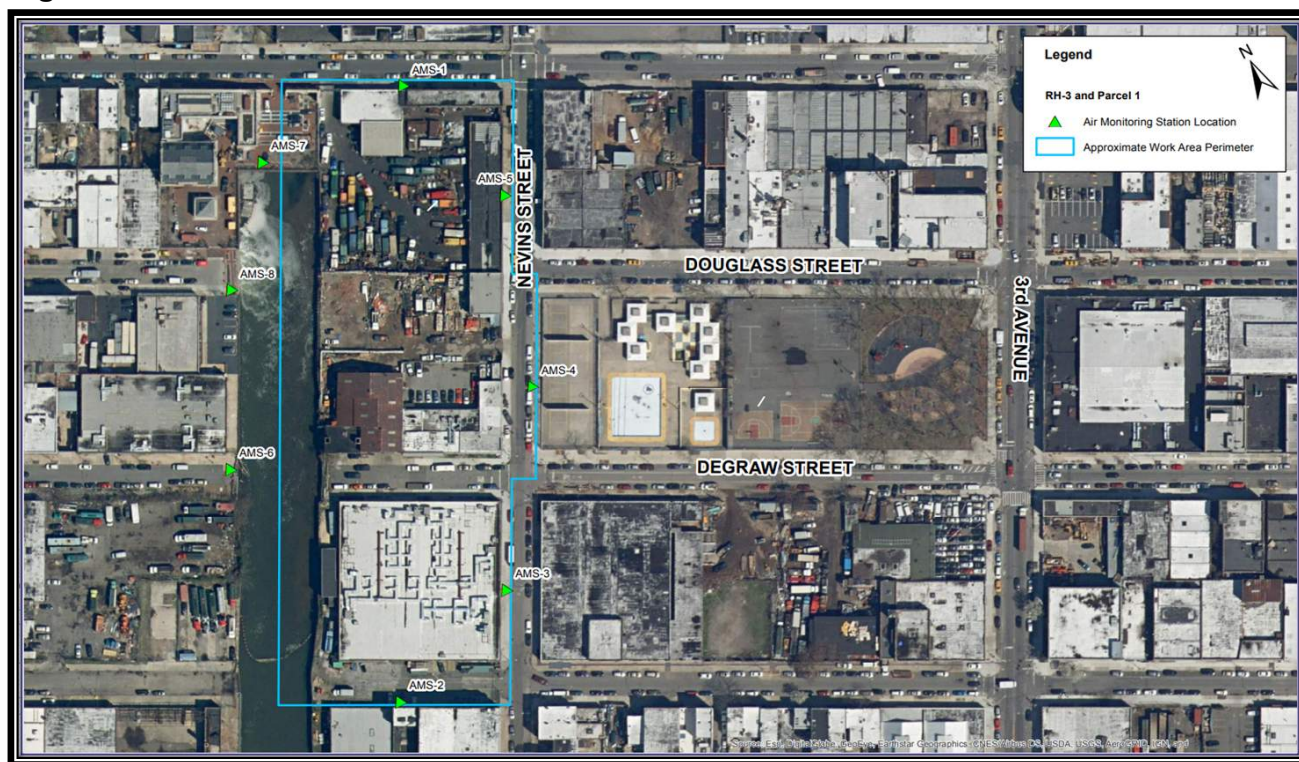
# Gowanus CSO Tank - CP2 Daily CAMP Report

Date: 7/13/2024

This Daily Air Monitoring Report summarizes perimeter air monitoring data collected during the referenced period in accordance with the Community Air Monitoring Plan (CAMP) which was included as part of the requirements of Spec Section 01 57 00 Temporary Controls for the Gowanus CSO-GC-SFS-RH3 CP2 Contract. Note: the information included in this daily summary is based on preliminary results and is subject to change based on data validation.

<b>Report Period:</b>	Saturday, July 13, 2024	
<b>Weather</b>	Temperature: 23.3-32.0 °C Precipitation: 0.00 inch Relative Humidity: 78.63 %	Wind Speed: 0.30-2.52 m/s Prevailing Wind Direction: SW
<b>Summary of Site Activities</b>	<ol style="list-style-type: none"> <li>1. CAMP monitoring approximately from 12 am to 2 pm.</li> <li>2. Slurry Wall Excavation Operations ended at 2 am.</li> <li>3. There were no 15 min average exceedances for PM10 over the course of the day.</li> <li>4. We received a VOC alert on AMS-1 at around 2:15PM. There were no activities in this area and no activities onsite after 2:00PM.</li> </ol> <p>Note: there was work going on at an adjacent site located at 251 Douglass.</p>	

Figure 1 - CAMP Station Locations

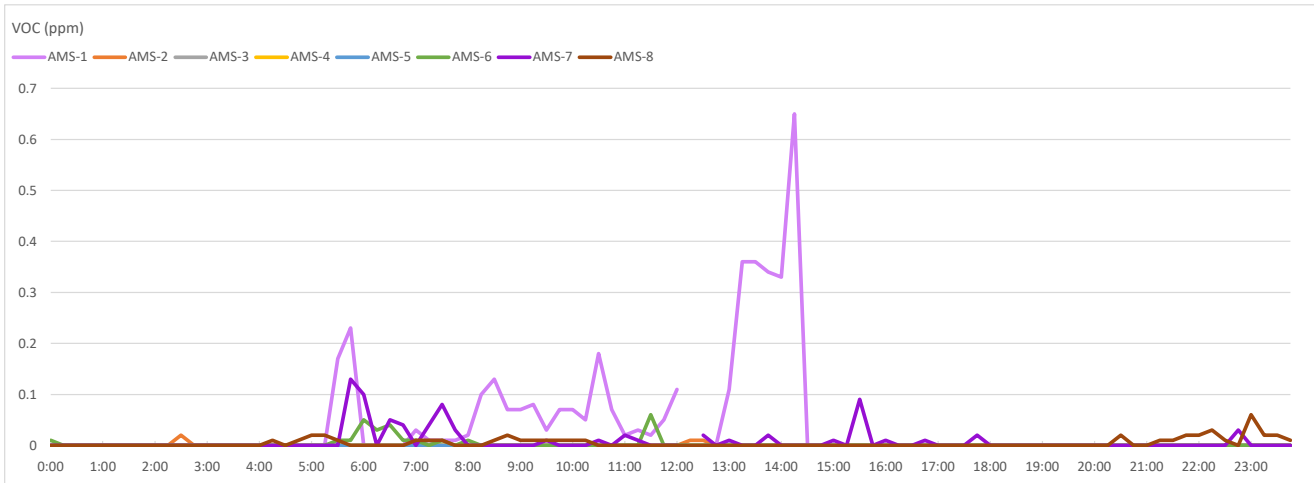


Daily Readings - VOCs  
 Data export  
 07/13/2024 00:00:00 to 07/13/2024 23:59:00  
 Averaging period: 15 minutes

Time	AMS-1	AMS-2	AMS-3	AMS-4	AMS-5	AMS-6	AMS-7	AMS-8
	VOC - AQS1 13032023-2241 (ppm)	VOC - AQS1 13032023-2244 (ppm)	VOC - AQS1 13032023-2240 (ppm)	VOC - AQS1 13032023-2238 (ppm)	VOC - AQS1 13032023-2239 (ppm)	VOC - AQS1 13032023-2237 (ppm)	VOC - AQS1 13032023-2243 (ppm)	VOC - AQS1 13032023-2242 (ppm)
7/13/2024 0:00	0	0	0	0	0	0.01	0	0
7/13/2024 0:15	0	0	0	0	0	0	0	0
7/13/2024 0:30	0	0	0	0	0	0	0	0
7/13/2024 0:45	0	0	0	0	0	0	0	0
7/13/2024 1:00	0	0	0	0	0	0	0	0
7/13/2024 1:15	0	0	0	0	0	0	0	0
7/13/2024 1:30	0	0	0	0	0	0	0	0
7/13/2024 1:45	0	0	0	0	0	0	0	0
7/13/2024 2:00	0	0	0	0	0	0	0	0
7/13/2024 2:15	0	0	0	0	0	0	0	0
7/13/2024 2:30	0	0.02	0	0	0	0	0	0
7/13/2024 2:45	0	0	0	0	0	0	0	0
7/13/2024 3:00	0	0	0	0	0	0	0	0
7/13/2024 3:15	0	0	0	0	0	0	0	0
7/13/2024 3:30	0	0	0	0	0	0	0	0
7/13/2024 3:45	0	0	0	0	0	0	0	0
7/13/2024 4:00	0	0	0	0	0	0	0	0
7/13/2024 4:15	0	0	0	0	0	0	0	0.01
7/13/2024 4:30	0	0	0	0	0	0	0	0
7/13/2024 4:45	0	0	0	0	0	0	0	0.01
7/13/2024 5:00	0	0	0	0	0	0	0	0.02
7/13/2024 5:15	0	0	0	0	0	0	0	0.02
7/13/2024 5:30	0.17	0	0	0	0	0.01	0	0.01
7/13/2024 5:45	0.23	0	0	0	0	0.01	0.13	0
7/13/2024 6:00	0	0	0	0	0	0.05	0.1	0
7/13/2024 6:15	0	0	0	0	0	0.03	0	0
7/13/2024 6:30	0	0	0	0	0	0.04	0.05	0
7/13/2024 6:45	0	0	0	0	0	0.01	0.04	0
7/13/2024 7:00	0.03	0	0	0	0	0.01	0	0.01
7/13/2024 7:15	0.01	0	0.01	0	0	0	0.04	0.01
7/13/2024 7:30	0.01	0	0	0	0	0.01	0.08	0.01
7/13/2024 7:45	0.01	0	0	0	0	0	0.03	0
7/13/2024 8:00	0.02	0	0	0	0	0.01	0	0
7/13/2024 8:15	0.1	0	0	0	0	0	0	0
7/13/2024 8:30	0.13	0	0	0	0	0	0	0.01
7/13/2024 8:45	0.07	0	0	0	0	0	0	0.02
7/13/2024 9:00	0.07	0	0	0	0	0	0	0.01
7/13/2024 9:15	0.08	0	0	0	0	0	0	0.01
7/13/2024 9:30	0.03	0	0	0	0	0	0.01	0.01
7/13/2024 9:45	0.07	0	0	0	0	0	0	0.01
7/13/2024 10:00	0.07	0	0	0	0	0	0	0.01
7/13/2024 10:15	0.05	0	0	0	0	0	0	0.01
7/13/2024 10:30	0.18	0	0	0	0	0	0.01	0
7/13/2024 10:45	0.07	0	0	0	0	0	0	0
7/13/2024 11:00	0.02	0	0	0	0	0	0.02	0
7/13/2024 11:15	0.03	0	0	0	0	0	0.01	0
7/13/2024 11:30	0.02	0	0	0	0	0.06	0	0
7/13/2024 11:45	0.05	0	0	0	0	0	0	0
7/13/2024 12:00	0.11	0	0	0	0	0	0	0
7/13/2024 12:15		0.01	0	0	0	0	0	0
7/13/2024 12:30	0	0.01	0	0	0	0	0.02	0
7/13/2024 12:45	0	0	0	0	0	0	0	0
7/13/2024 13:00	0.11	0	0	0	0	0	0.01	0
7/13/2024 13:15	0.36	0	0	0	0	0	0	0
7/13/2024 13:30	0.36	0	0	0	0	0	0	0
7/13/2024 13:45	0.34	0	0	0	0	0	0.02	0
7/13/2024 14:00	0.33	0	0	0	0	0	0	0
7/13/2024 14:15	0.65	0	0	0	0	0	0	0
7/13/2024 14:30	0	0	0	0	0	0	0	0
7/13/2024 14:45	0	0	0	0	0	0	0	0
7/13/2024 15:00	0	0	0	0	0	0	0.01	0
7/13/2024 15:15	0	0	0	0	0	0	0	0
7/13/2024 15:30	0	0	0	0	0	0	0.09	0
7/13/2024 15:45	0	0	0	0	0	0	0	0
7/13/2024 16:00	0	0	0	0	0	0	0.01	0
7/13/2024 16:15	0	0	0	0	0	0	0	0

Daily Readings - VOCs  
 Data export  
 07/13/2024 00:00:00 to 07/13/2024 23:59:00  
 Averaging period: 15 minutes

Time	AMS-1	AMS-2	AMS-3	AMS-4	AMS-5	AMS-6	AMS-7	AMS-8
	VOC - AQS1 13032023-2241 (ppm)	VOC - AQS1 13032023-2244 (ppm)	VOC - AQS1 13032023-2240 (ppm)	VOC - AQS1 13032023-2238 (ppm)	VOC - AQS1 13032023-2239 (ppm)	VOC - AQS1 13032023-2237 (ppm)	VOC - AQS1 13032023-2243 (ppm)	VOC - AQS1 13032023-2242 (ppm)
7/13/2024 16:30	0	0	0	0	0	0	0	0
7/13/2024 16:45	0	0	0	0	0	0	0.01	0
7/13/2024 17:00	0	0	0	0	0	0	0	0
7/13/2024 17:15	0	0	0	0	0	0	0	0
7/13/2024 17:30	0	0	0	0	0	0	0	0
7/13/2024 17:45	0	0	0	0	0	0	0.02	0
7/13/2024 18:00	0	0	0	0	0	0	0	0
7/13/2024 18:15	0	0	0	0	0	0	0	0
7/13/2024 18:30	0	0	0	0	0	0	0	0
7/13/2024 18:45	0	0	0	0	0	0	0	0
7/13/2024 19:00	0	0	0	0	0	0	0	0
7/13/2024 19:15	0	0	0	0	0	0	0	0
7/13/2024 19:30	0	0	0	0	0	0	0	0
7/13/2024 19:45	0	0	0	0	0	0	0	0
7/13/2024 20:00	0	0	0	0	0	0	0	0
7/13/2024 20:15	0	0	0	0	0	0	0	0
7/13/2024 20:30	0	0	0	0	0	0	0	0.02
7/13/2024 20:45	0	0	0	0	0	0	0	0
7/13/2024 21:00	0	0	0	0	0	0	0	0
7/13/2024 21:15	0	0	0	0	0	0	0	0.01
7/13/2024 21:30	0	0	0	0	0	0	0	0.01
7/13/2024 21:45	0	0	0	0	0	0	0	0.02
7/13/2024 22:00	0	0	0	0	0	0	0	0.02
7/13/2024 22:15	0	0	0	0	0	0	0	0.03
7/13/2024 22:30	0	0	0	0	0	0	0	0.01
7/13/2024 22:45	0	0	0	0	0	0	0.03	0
7/13/2024 23:00	0	0	0	0	0	0	0	0.06
7/13/2024 23:15	0	0	0	0	0	0	0	0.02
7/13/2024 23:30	0	0	0	0	0	0	0	0.02
7/13/2024 23:45	0	0	0	0	0	0	0	0.01



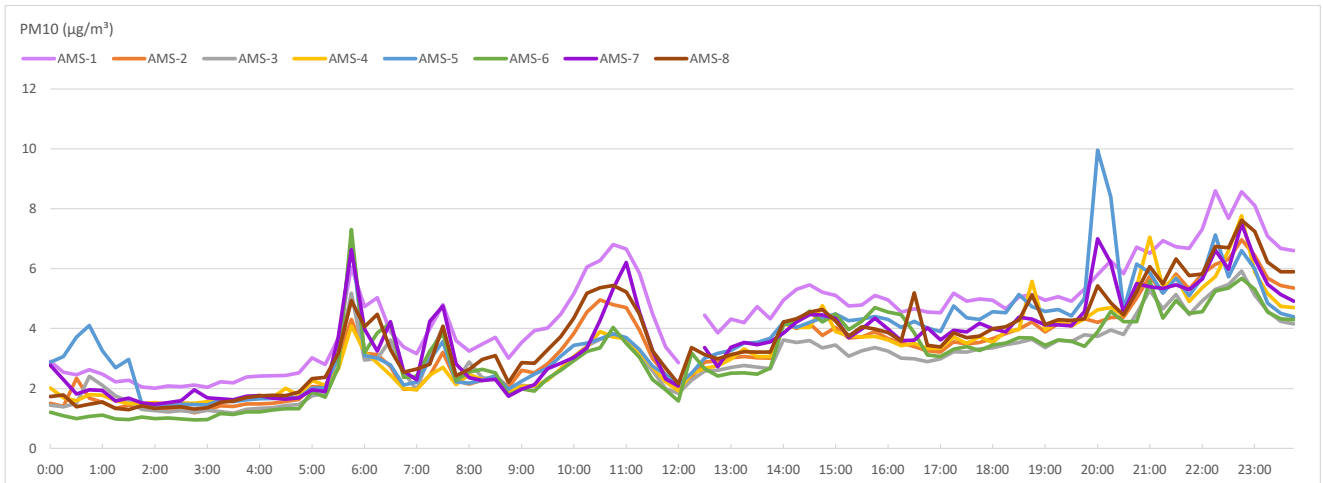
Target Analyte	Admin Level	Normal (green)	Alert Limit (yellow)	Response Limit (orange)	Action Limit (red)
Volatile Organic Compounds *	Between 0.3 and < 0.5 ppm as a 15 minute TWA	Below or equal to 0.5 ppm as a 15 minute TWA	>0.5 ppm and <=0.75 ppm as a 15 minute TWA or odors are observed	>0.75 to < 1.0 ppm as a 15 minute TWA or odors are observed	>=1 ppm as a 15 minute TWA or if odors are observed**

Daily Readings - PM10  
 Data export  
 07/13/2024 00:00:00 to 07/13/2024 23:59:00  
 Averaging period: 15 minutes

Time	AMS-1	AMS-2	AMS-3	AMS-4	AMS-5	AMS-6	AMS-7	AMS-8
	PM10 - AQS1 13032023-2241 (µg/m³)	PM10 - AQS1 13032023-2244 (µg/m³)	PM10 - AQS1 13032023-2240 (µg/m³)	PM10 - AQS1 13032023-2238 (µg/m³)	PM10 - AQS1 13032023-2239 (µg/m³)	PM10 - AQS1 13032023-2237 (µg/m³)	PM10 - AQS1 13032023-2243 (µg/m³)	PM10 - AQS1 13032023-2242 (µg/m³)
7/13/2024 0:00	2.9	1.51	1.44	2.02	2.87	1.21	2.78	1.73
7/13/2024 0:15	2.54	1.4	1.39	1.69	3.07	1.09	2.3	1.78
7/13/2024 0:30	2.46	2.34	1.51	1.59	3.72	0.99	1.82	1.39
7/13/2024 0:45	2.63	1.68	2.4	1.79	4.1	1.07	1.96	1.47
7/13/2024 1:00	2.48	1.54	2.1	1.77	3.26	1.11	1.93	1.55
7/13/2024 1:15	2.22	1.34	1.75	1.59	2.69	0.98	1.58	1.34
7/13/2024 1:30	2.27	1.44	1.56	1.5	2.97	0.96	1.68	1.29
7/13/2024 1:45	2.05	1.38	1.3	1.5	1.49	1.05	1.52	1.42
7/13/2024 2:00	2.01	1.29	1.26	1.53	1.42	0.99	1.48	1.34
7/13/2024 2:15	2.08	1.35	1.22	1.48	1.41	1.01	1.53	1.37
7/13/2024 2:30	2.06	1.35	1.26	1.52	1.47	0.98	1.59	1.39
7/13/2024 2:45	2.12	1.19	1.21	1.51	1.46	0.95	1.95	1.31
7/13/2024 3:00	2.04	1.29	1.27	1.56	1.45	0.96	1.69	1.36
7/13/2024 3:15	2.22	1.42	1.23	1.58	1.61	1.16	1.66	1.54
7/13/2024 3:30	2.19	1.4	1.18	1.57	1.56	1.13	1.62	1.58
7/13/2024 3:45	2.38	1.48	1.3	1.67	1.62	1.22	1.74	1.7
7/13/2024 4:00	2.41	1.49	1.34	1.77	1.66	1.22	1.76	1.75
7/13/2024 4:15	2.42	1.51	1.36	1.7	1.67	1.28	1.68	1.77
7/13/2024 4:30	2.44	1.57	1.43	2.01	1.7	1.33	1.65	1.76
7/13/2024 4:45	2.52	1.63	1.46	1.76	1.7	1.33	1.69	1.88
7/13/2024 5:00	3.02	2.06	1.75	2.26	2.01	1.89	1.96	2.33
7/13/2024 5:15	2.8	2.06	1.85	2.12	2.02	1.71	1.9	2.37
7/13/2024 5:30	3.67	3.05	3.08	2.64	3.13	2.7	3.71	3.17
7/13/2024 5:45	6.05	4.3	5.18	4.09	6.95	7.31	6.63	4.93
7/13/2024 6:00	4.73	3.17	2.95	3.23	3.1	3.19	3.98	4.06
7/13/2024 6:15	5.03	3.13	3	2.85	3.01	3.86	3.25	4.47
7/13/2024 6:30	3.89	2.73	3.62	2.45	2.79	4.18	4.23	3.3
7/13/2024 6:45	3.39	1.98	2.54	2	2.11	2.37	2.59	2.54
7/13/2024 7:00	3.16	1.99	1.95	1.96	2.21	2.4	2.29	2.65
7/13/2024 7:15	3.99	2.43	3.13	2.45	2.96	3.25	4.24	2.81
7/13/2024 7:30	4.8	3.2	4.03	2.7	3.57	3.85	4.75	4.08
7/13/2024 7:45	3.6	2.25	2.23	2.13	2.22	2.26	2.82	2.42
7/13/2024 8:00	3.25	2.15	2.88	2.47	2.18	2.55	2.36	2.64
7/13/2024 8:15	3.48	2.28	2.36	2.3	2.28	2.64	2.26	2.97
7/13/2024 8:30	3.71	2.41	2.3	2.35	2.42	2.52	2.31	3.1
7/13/2024 8:45	3.01	2.04	1.83	1.88	1.98	1.77	1.74	2.2
7/13/2024 9:00	3.54	2.61	2.1	2.07	2.24	1.99	1.98	2.86
7/13/2024 9:15	3.93	2.52	2.06	2.08	2.48	1.91	2.13	2.84
7/13/2024 9:30	4.02	2.82	2.31	2.28	2.68	2.33	2.66	3.29
7/13/2024 9:45	4.47	3.27	2.64	2.66	3.08	2.61	2.84	3.73
7/13/2024 10:00	5.16	3.83	3.07	3.06	3.44	2.93	3.03	4.35
7/13/2024 10:15	6.06	4.55	3.42	3.39	3.51	3.24	3.35	5.18
7/13/2024 10:30	6.27	4.95	3.64	3.9	3.65	3.35	4.27	5.36
7/13/2024 10:45	6.8	4.8	3.81	3.72	3.82	4.04	5.33	5.44
7/13/2024 11:00	6.65	4.7	3.67	3.66	3.69	3.5	6.2	5.22
7/13/2024 11:15	5.85	3.95	3.09	3.22	3.3	3.04	4.55	4.49
7/13/2024 11:30	4.5	3	2.6	2.71	2.75	2.3	3.27	3.26
7/13/2024 11:45	3.39	2.47	2	2.22	2.47	1.96	2.32	2.68
7/13/2024 12:00	2.86	2	1.84	1.92	2.14	1.58	2.08	2.16
7/13/2024 12:15		2.38	2.27	2.49	2.51	3.18		3.36
7/13/2024 12:30	4.44	2.88	2.59	2.67	3.01	2.66	3.36	3.13
7/13/2024 12:45	3.86	2.92	2.61	2.76	3.17	2.41	2.72	2.99
7/13/2024 13:00	4.31	3.02	2.7	2.98	3.27	2.51	3.38	3.13
7/13/2024 13:15	4.2	3.06	2.77	3.32	3.51	2.52	3.53	3.23
7/13/2024 13:30	4.73	3.02	2.71	3.07	3.54	2.48	3.46	3.21
7/13/2024 13:45	4.32	3.01	2.66	3.07	3.67	2.68	3.56	3.21
7/13/2024 14:00	4.94	4.19	3.62	4.16	4.21	4.12	3.84	4.22
7/13/2024 14:15	5.31	4.01	3.54	4.04	4.04	4.24	4.22	4.32
7/13/2024 14:30	5.46	4.17	3.6	4.04	4.21	4.58	4.46	4.55
7/13/2024 14:45	5.21	3.77	3.35	4.76	4.36	4.22	4.45	4.63
7/13/2024 15:00	5.1	4.04	3.45	3.9	4.49	4.48	4.34	4.25
7/13/2024 15:15	4.75	3.68	3.08	3.76	4.26	3.96	3.69	3.75
7/13/2024 15:30	4.78	3.72	3.26	3.72	4.31	4.24	3.98	4.06
7/13/2024 15:45	5.1	3.9	3.36	3.74	4.4	4.7	4.35	3.98
7/13/2024 16:00	4.95	3.66	3.25	3.62	4.3	4.55	3.98	3.87
7/13/2024 16:15	4.55	3.52	3.01	3.43	4.04	4.46	3.6	3.59

Daily Readings - PM10  
 Data export  
 07/13/2024 00:00:00 to 07/13/2024 23:59:00  
 Averaging period: 15 minutes

Time	AMS-1	AMS-2	AMS-3	AMS-4	AMS-5	AMS-6	AMS-7	AMS-8
	PM10 - AQS1 13032023-2241 (µg/m³)	PM10 - AQS1 13032023-2244 (µg/m³)	PM10 - AQS1 13032023-2240 (µg/m³)	PM10 - AQS1 13032023-2238 (µg/m³)	PM10 - AQS1 13032023-2239 (µg/m³)	PM10 - AQS1 13032023-2237 (µg/m³)	PM10 - AQS1 13032023-2243 (µg/m³)	PM10 - AQS1 13032023-2242 (µg/m³)
7/13/2024 16:30	4.66	3.4	2.99	3.5	4.24	3.86	3.61	5.19
7/13/2024 16:45	4.55	3.26	2.89	3.33	4.02	3.12	4.03	3.44
7/13/2024 17:00	4.53	3.21	2.99	3.34	3.9	3.07	3.62	3.39
7/13/2024 17:15	5.18	3.56	3.23	3.72	4.75	3.31	3.94	3.86
7/13/2024 17:30	4.91	3.48	3.21	3.5	4.36	3.4	3.89	3.7
7/13/2024 17:45	4.99	3.53	3.32	3.73	4.3	3.27	4.18	3.75
7/13/2024 18:00	4.94	3.66	3.35	3.53	4.56	3.45	3.99	3.99
7/13/2024 18:15	4.66	3.83	3.46	3.91	4.53	3.51	3.89	4.06
7/13/2024 18:30	5.05	3.98	3.53	3.96	5.14	3.69	4.38	4.28
7/13/2024 18:45	5.14	4.22	3.64	5.57	4.73	3.68	4.31	5.11
7/13/2024 19:00	4.94	3.89	3.36	3.95	4.57	3.44	4.12	4.13
7/13/2024 19:15	5.06	4.17	3.61	4.22	4.63	3.62	4.12	4.29
7/13/2024 19:30	4.91	4.14	3.57	4.08	4.42	3.58	4.09	4.27
7/13/2024 19:45	5.32	4.32	3.79	4.32	5.01	3.41	4.56	4.33
7/13/2024 20:00	5.8	4.21	3.74	4.62	9.95	3.89	6.99	5.43
7/13/2024 20:15	6.26	4.37	3.95	4.7	8.39	4.57	6.19	4.86
7/13/2024 20:30	5.83	4.38	3.8	4.44	4.62	4.23	4.54	4.45
7/13/2024 20:45	6.72	5.02	4.51	5.4	6.15	4.23	5.5	5.23
7/13/2024 21:00	6.51	5.75	5.28	7.05	5.86	5.59	5.39	6.07
7/13/2024 21:15	6.93	5.21	4.66	5.38	5.18	4.35	5.34	5.49
7/13/2024 21:30	6.73	5.82	5.14	5.71	5.68	4.93	5.46	6.32
7/13/2024 21:45	6.67	5.32	4.46	4.9	5.09	4.51	5.3	5.77
7/13/2024 22:00	7.32	5.82	4.92	5.36	5.71	4.56	5.65	5.82
7/13/2024 22:15	8.6	6.14	5.31	5.73	7.12	5.25	6.61	6.74
7/13/2024 22:30	7.68	6.31	5.47	6.6	5.72	5.35	5.98	6.7
7/13/2024 22:45	8.56	6.97	5.92	7.77	6.6	5.67	7.5	7.62
7/13/2024 23:00	8.1	6.44	5.12	5.88	5.99	5.31	6.32	7.24
7/13/2024 23:15	7.08	5.68	4.58	5.17	4.85	4.55	5.48	6.22
7/13/2024 23:30	6.67	5.44	4.24	4.74	4.51	4.32	5.14	5.9
7/13/2024 23:45	6.6	5.35	4.15	4.7	4.39	4.29	4.91	5.89



Target Analyte	Admin Level	Normal (green)	Alert Limit (yellow)	Response Limit (orange)	Action Limit (red)
Respirable particulate matter (PM10) *	>75 ug/m3 to 100 ug/m3 as a 15 minute TWA	<=100 ug/m3 as a 15 minute TWA	>100 ug/m3 and <=150 ug/m3 as a 15 minute TWA	See Alert Limit criteria	>150 ug/m3 as a 15 minute TWA