

# Gowanus CSO Tank - CP2 Daily CAMP Report

**Date:** 8/10/2024

This Daily Air Monitoring Report summarizes perimeter air monitoring data collected during the referenced period in accordance with the Community Air Monitoring Plan (CAMP) which was included as part of the requirements of Spec Section 01 57 00 Temporary Controls for the Gowanus CSO-GC-SFS-RH3 CP2 Contract. Note: the information included in this daily summary is based on preliminary results and is subject to change based on data validation.

<b>Report Period:</b>	Saturday, August 10, 2024	
<b>Weather</b>	Temperature: 24.5-25.4 °C Precipitation: 0.00 inch Relative Humidity: 91.5 %	Wind Speed: 0.5-2.65 m/s Prevailing Wind Direction: E
<b>Summary of Site Activities</b>	1. CAMP monitoring approximately from 12 am to 2 pm. 2. Permeation grouting operations ended at 2 am. 3. There were no 15 min average exceedances for VOC and PM10 over the course of the day.	

**Figure 1 - CAMP Station Locations**



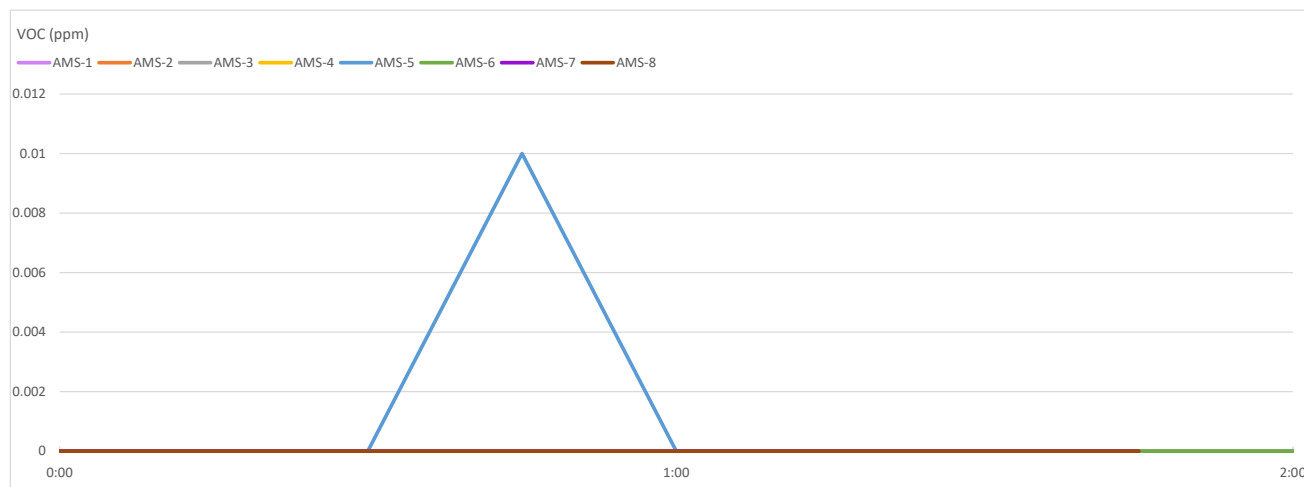
Daily Readings - VOCs

Data export

08/10/2024 00:00:00 to 08/10/2024 23:59:00

Averaging period: 15 minutes

Time	AMS-1	AMS-2	AMS-3	AMS-4	AMS-5	AMS-6	AMS-7	AMS-8
	VOC - AQS1 13032023-2241 (ppm)	VOC - AQS1 13032023-2244 (ppm)	VOC - AQS1 13032023-2240 (ppm)	VOC - AQS1 13032023-2238 (ppm)	VOC - AQS1 13032023-2239 (ppm)	VOC - AQS1 13032023-2237 (ppm)	VOC - AQS1 13032023-2243 (ppm)	VOC - AQS1 13032023-2242 (ppm)
8/10/2024 0:00		0	0	0	0	0	0	0
8/10/2024 0:15		0	0	0	0	0	0	0
8/10/2024 0:30		0	0	0	0	0	0	0
8/10/2024 0:45		0	0	0	0.01	0	0	0
8/10/2024 1:00		0	0	0	0	0	0	0
8/10/2024 1:15		0	0	0	0	0	0	0
8/10/2024 1:30		0	0	0	0	0	0	0
8/10/2024 1:45		0	0	0	0	0	0	0
8/10/2024 2:00		0	0	0	0	0		

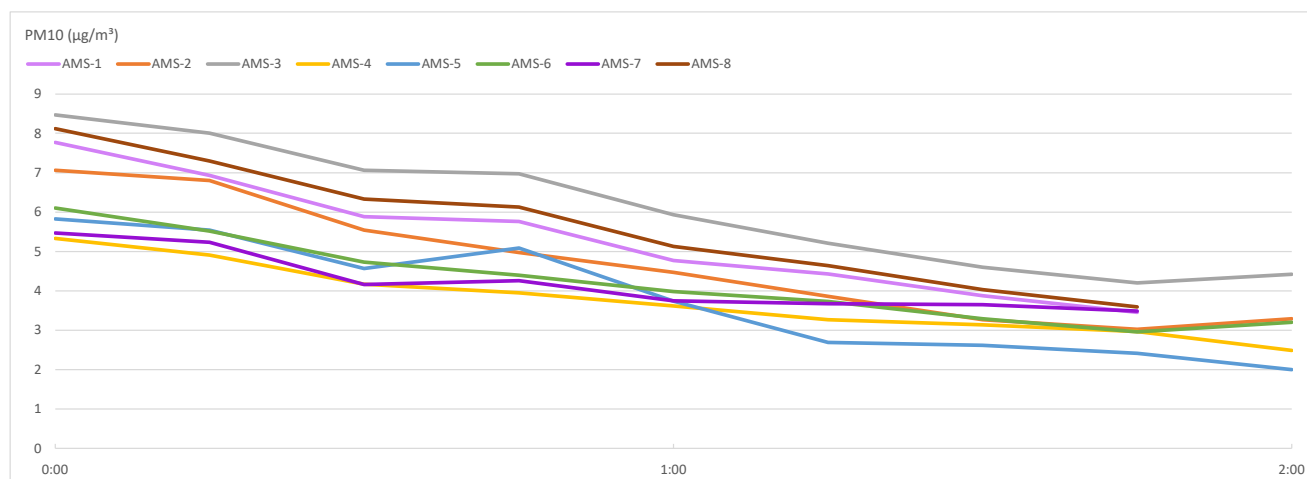


Targt Analyte	Admin Level	Normal (green)	Alert Limit (yellow)	Response Limit (orange)	Action Limit (red)
Volatile Organic Compounds *	Between 0.3 and < 0.5 ppm as a 15 minute TWA	Below or equal to 0.5 ppm as a 15 minute TWA	>0.5 ppm and <=0.75 ppm as a 15 minute TWA or odors are	>0.75 to < 1.0 ppm as a 15 minute TWA or odors are observed	>=1 ppm as a 15 minute TWA or if odors are observed**

See last page for responses required for alert levels

Daily Readings - PM10  
Data export  
08/10/2024 00:00:00 to 08/10/2024 23:59:00  
Averaging period: 15 minutes

Time	AMS-1	AMS-2	AMS-3	AMS-4	AMS-5	AMS-6	AMS-7	AMS-8
	PM10 - AQS1 13032023-2241 (µg/m³)	PM10 - AQS1 13032023-2244 (µg/m³)	PM10 - AQS1 13032023-2240 (µg/m³)	PM10 - AQS1 13032023-2238 (µg/m³)	PM10 - AQS1 13032023-2239 (µg/m³)	PM10 - AQS1 13032023-2237 (µg/m³)	PM10 - AQS1 13032023-2243 (µg/m³)	PM10 - AQS1 13032023-2242 (µg/m³)
8/10/2024 0:00	7.77	7.06	8.47	5.33	5.83	6.1	5.47	8.12
8/10/2024 0:15	6.93	6.8	8	4.91	5.54	5.52	5.23	7.3
8/10/2024 0:30	5.88	5.54	7.06	4.17	4.57	4.73	4.16	6.33
8/10/2024 0:45	5.76	4.97	6.97	3.95	5.09	4.4	4.26	6.13
8/10/2024 1:00	4.77	4.47	5.93	3.62	3.74	3.98	3.75	5.13
8/10/2024 1:15	4.43	3.86	5.21	3.27	2.69	3.73	3.67	4.64
8/10/2024 1:30	3.88	3.27	4.6	3.14	2.62	3.29	3.65	4.03
8/10/2024 1:45	3.45	3.02	4.2	2.97	2.41	2.96	3.49	3.59
8/10/2024 2:00		3.29	4.42	2.49	2	3.2		



Target Analyte	Admin Level	Normal (green)	Alert Limit (yellow)	Response Limit (orange)	Action Limit (red)
Respirable particulate matter (PM10) *	>75 ug/m3 to 100 ug/m3 as a 15 minute TWA	<=100 ug/m3 as a 15 minute TWA	>100 ug/m3 and <=150 ug/m3 as a 15 minute TWA	See Alert Limit criteria	>150 ug/m3 as a 15 minute TWA

See last page for responses required for alert levels

## Alert Level Responses

Site Condition	Corrective Action
Operational Condition (green) (VOC ≤0.5 ppm, PM10 ≤100 ug/m3)	<ul style="list-style-type: none"> <li>• Normal site operations – No Response Action Required</li> </ul>
Alert Condition (yellow) (VOC >0.5 and ≤ 0.75 ppm, PM10 >100 ug/m3 to ≤150 ug/m3)	<ul style="list-style-type: none"> <li>• Assessment by the Air Monitoring Technician to evaluate potential cause of elevated concentration level. Note observation in the site log book.</li> </ul>
Response Condition (orange) (VOC > 0.75 to <1.0 ppm, PM10 -Not Defined in DEP CAMP)	<ul style="list-style-type: none"> <li>• Assess site conditions.</li> <li>• Take appropriate dust or vapor control measures including application of water or modification of work activities.</li> <li>• Temporarily halt operations to assess conditions</li> <li>• Note observation in the site log book.</li> </ul>
Action Conditions (red) (VOC ≥1.0 ppm, PM10 >150 ug/m3)	<ul style="list-style-type: none"> <li>• Stop current work activity in the Action alarm area.</li> <li>• Run gas chromatography screening on VOC levels greater than 1 ppm to establish potential presence of benzene.</li> <li>• If benzene levels are not detected or are less than 1.0 ppm, work may resume.</li> <li>• Assess site conditions.</li> <li>• Take appropriate action steps to correct conditions.</li> <li>• Commence work activities and monitor air results/concentrations to ensure that corrective measures are effective.</li> <li>• Note observation in the site log book.</li> </ul>