

<b>PROJECT:</b>	Former Fulton MGP – Parcels III and IV (Site No.: 224051)
<b>ADDRESS:</b>	545 Sackett St., Brooklyn, NY
<b>PREPARED BY:</b>	Roux Environmental Engineering and Geology, D.P.C.
<b>DATE:</b>	August 12, 2024
<b>WEATHER:</b>	Temp: 67-82°F, Sunny, RH: 51% Pressure: 29.98 in Hg Wind: West @ 9 mph
<b>TIME:</b>	07:00 – 15:15

### Project Team

#### General Contractor and Subcontractors:

- Mega Contracting Group, LLC (Mega)
- Creamer Environmental, Inc. (CEI)

#### Engineers and Consultants:

- Roux Environmental Engineering and Geology, D.P.C. (Roux)
- GZA GeoEnvironmental Inc. of New York (GZANY)
- WSP USA (WSP)
- Langan Engineering, Environmental, Surveying, Landscape Architecture and Geology D.P.C. (Langan)

### Remedial Action Work Summary

#### Work Activities Performed Onsite:

- Excavation and loadout of material for offsite disposal at Clean Earth of New Castle.
- Installation of support of excavation (SOE) within the former Gas Holder 4 excavation area.
- Demolition of Gas Holder 4 wall.

#### Contractor Work Performed Onsite:

Creamer Environmental, Inc (CEI) excavated material within former Gas Holder 4 footprint and loaded out 20 triaxle trucks (approximately 400 tons) of nonhazardous MGP impacted material from waste characterization grids WC-15 (0-5, 5-10 and 10-15), WC-GH4-1 (0-5, 5-10 and 10-15) and WC-GH4-2 (0-5, 5-10 and 10-15) to Clean Earth of New Castle (CENC). CEI continued excavation and demolition Gas Holder 4 wall. All excavation work related to the former Gas Holder 4 excavation area was conducted inside the tension fabric structure (TFS) with the associated vapor management system (VMS) in operation throughout the day.

CEI continued fabricating steel bracing and installing walers along the north, west and east sides of the Gas Holder 4 excavation area. CEI pumped accumulated rainwater from the west of former Gas Holder 3 excavation area into an onsite Frac tank. CEI treated approximately 6,950 gallons of recovered construction wastewater through the water treatment system (WTS) and discharged the treated water to the New York City Department of Environmental Protection (NYCDEP) combined sewer system. CEI prepped soil cuttings generated during the waste classification sampling event for disposal at Waste Management Emelle. CEI temporarily relocated and secured the previously discovered underground storage tank (UST) within waste characterization grid WC-GH4-1.

Other dust and odor control measures (application of Atmos odor suppressing foam, wetting, tarping, limiting vehicle speeds, covering trucks prior leaving the site, etc.) continued to be performed to ensure there were no impacts to the neighborhood. Truck tires were washed to ensure material was not being tracked offsite. Exposed soils were covered with Atmos odor suppressing foam and/or poly sheeting during work operations.

#### Air Monitoring:

- No VOC or dust exceedances were observed from the community air monitoring program (CAMP).
- GZANY to provide a summary report of CAMP activities separately.

#### Vibration Monitoring:

- No alerts of vibrations exceeding Site's threshold or limiting criteria (1" /second and 2" / second, respectively) were received.
- Vibration monitoring data is included at the end of this Daily Status Report.

#### Erosion and Sediment Control:

- None.

<b>PROJECT:</b>	Former Fulton MGP – Parcels III and IV (Site No.: 224051)
<b>ADDRESS:</b>	545 Sackett St., Brooklyn, NY
<b>PREPARED BY:</b>	Roux Environmental Engineering and Geology, D.P.C.
<b>DATE:</b>	August 12, 2024
<b>WEATHER:</b>	Temp: 67-82°F, Sunny, RH: 51% Pressure: 29.98 in Hg Wind: West @ 9 mph
<b>TIME:</b>	07:00 – 15:15

**Sampling Conducted:**

- None.

**Other Items of Note:**

- Construction activities were observed as part of the ongoing combined sewer overflow (CSO) project west of Nevins Street.

**Imported Material**

Name - Location	Source	During This Reporting Period		Total	
		Loads	Tons	Loads	Tons
Vulcan ASTM #3 (1 ½" Stone)	Vulcan Hamburg Quarry			12	305.09
Vulcan ASTM #57 (3/4" Stone)	Vulcan Hamburg Quarry			6	152.05
Vulcan General Fill	Vulcan Wantage Quarry			1,202	29,962.96

**Exported Material**

Material	Facility	During This Reporting Period		Total	
		Loads	Tons	Loads	Tons
TCE Impacted Haz Hot Spots	CWM Emelle			7	161.72
Cd Impacted Haz Material from WC-5	CWM Emelle			3	49.45
Pb Impacted Haz from Parcel IV Hot Spot	CWM Emelle			25	536.72
Cd Impacted Haz Material from WC-5	Clean Earth (CE) NJ			16	397.75
Concrete for Recycling	Bayshore			27	~509.87
Concrete for Landfill	WM Fairless			63	~1,415.93
Urban Fill for CVOC Orange Zone (Lot 17)	WM Fairless Urban Fill-OZ			47	~1034
Urban Fill for CVOC Orange Zone (Lot 49)	WM Fairless Urban Fill-OZ			24	~528
Non-Haz Urban Fill (Lot 17)	CE Carteret			42	~924
Non-Haz Urban Fill (Lot 49)	CE Carteret			73	~1,606
MGP soil with TCE>25 ppm	CE ESMI			184	~3,966
	CE Southeast Pennsylvania			15	~320
	CMW Emelle			404	~7,880
Non-Haz MGP Impacted (TCLP Benzene > 0.5)	CE Southeast Pennsylvania			8	~237.97
Non-Haz MGP Impacted (TCLP Benzene < 0.5)	CE Southeast Pennsylvania			119	~2,674
Non-Haz Contaminated Urban Fill	WM Fairless			429	~8974.69
Non-Haz Urban Fill	CE Carteret -BZ			76	~1,662
Non-Haz MGP Impacted	CE of New Castle	20	~400	208	~3350
MGP Impacted (TCLP Benzene 0.2<x<0.5 mg/l)	CE Southeast Pennsylvania			5	~110
Non-Haz MGP Impacted	CE Southeast Pennsylvania			19	~380

**DAILY STATUS REPORT**

<b>PROJECT:</b>	Former Fulton MGP – Parcels III and IV (Site No.: 224051)
<b>ADDRESS:</b>	545 Sackett St., Brooklyn, NY
<b>PREPARED BY:</b>	Roux Environmental Engineering and Geology, D.P.C.
<b>DATE:</b>	August 12, 2024
<b>WEATHER:</b>	Temp: 67-82°F, Sunny, RH: 51% Pressure: 29.98 in Hg Wind: West @ 9 mph
<b>TIME:</b>	07:00 – 15:15

**Exported Material Truck Log**

Number	Excavation Grid	Disposal Facility	Disposal Profile	Manifest Number	Trucking Company	Truck License Plate
1	WC-15 (10-15), WC-GH4-1 (10-15), WC-GH4-2 (10-15)	CENC	Non-Haz MGP Impacted	2823780	D&A	AU522N
2	WC-15 (0-5), WC-GH4-1 (0-5), WC-GH4-2 (0-5)	CENC	Non-Haz MGP Impacted	2823781	D&A	AT517L
3	WC-15 (0-5), WC-GH4-1 (0-5), WC-GH4-2 (0-5)	CENC	Non-Haz MGP Impacted	2823782	D&A	AY760V
4	WC-15 (0-5), WC-GH4-1 (0-5), WC-GH4-2 (0-5)	CENC	Non-Haz MGP Impacted	2823783	D&A	AT879N
5	WC-15 (0-5), WC-GH4-1 (0-5), WC-GH4-2 (0-5)	CENC	Non-Haz MGP Impacted	2823784	D&A	AW711R
6	WC-15 (0-5), WC-GH4-1 (0-5), WC-GH4-2 (0-5)	CENC	Non-Haz MGP Impacted	2823785	D&A	AU435J
7	WC-15 (0-5), WC-GH4-1 (0-5), WC-GH4-2 (0-5)	CENC	Non-Haz MGP Impacted	2823786	D&A	AS462U
8	WC-15 (0-5), WC-GH4-1 (0-5), WC-GH4-2 (0-5)	CENC	Non-Haz MGP Impacted	2823787	D&A	AU273U
9	WC-15 (0-5), WC-GH4-1 (0-5), WC-GH4-2 (0-5)	CENC	Non-Haz MGP Impacted	2823788	D&A	AU427R
10	WC-15 (0-5), WC-GH4-1 (0-5), WC-GH4-2 (0-5)	CENC	Non-Haz MGP Impacted	2823789	D&A	AW918X
11	WC-15 (0-5), WC-GH4-1 (0-5), WC-GH4-2 (0-5)	CENC	Non-Haz MGP Impacted	2823790	D&A	AU760U
12	WC-15 (5-10), WC-GH4-1 (5-10), WC-GH4-2 (5-10)	CENC	Non-Haz MGP Impacted	2823791	D&A	AU426R
13	WC-15 (5-10), WC-GH4-1 (5-10), WC-GH4-2 (5-10)	CENC	Non-Haz MGP Impacted	2823792	D&A	AU436J
14	WC-15 (5-10), WC-GH4-1 (5-10), WC-GH4-2 (5-10)	CENC	Non-Haz MGP Impacted	2823793	D&A	AU707U
15	WC-15 (5-10), WC-GH4-1 (5-10), WC-GH4-2 (5-10)	CENC	Non-Haz MGP Impacted	2823794	Valiant	AY193P
16	WC-15 (5-10), WC-GH4-1 (5-10), WC-GH4-2 (5-10)	CENC	Non-Haz MGP Impacted	2823795	Valiant	AY387N
17	WC-15 (10-15), WC-GH4-1 (10-15), WC-GH4-2 (10-15)	CENC	Non-Haz MGP Impacted	2823796	Valiant	AY718Y
18	WC-15 (10-15), WC-GH4-1 (10-15), WC-GH4-2 (10-15)	CENC	Non-Haz MGP Impacted	2823797	Valiant	AY901C
19	WC-15 (10-15), WC-GH4-1 (10-15), WC-GH4-2 (10-15)	CENC	Non-Haz MGP Impacted	2823798	Valiant	AY771U
20	WC-15 (10-15), WC-GH4-1 (10-15), WC-GH4-2 (10-15)	CENC	Non-Haz MGP Impacted	2823799	Valiant	AY189P

**Dewatering**

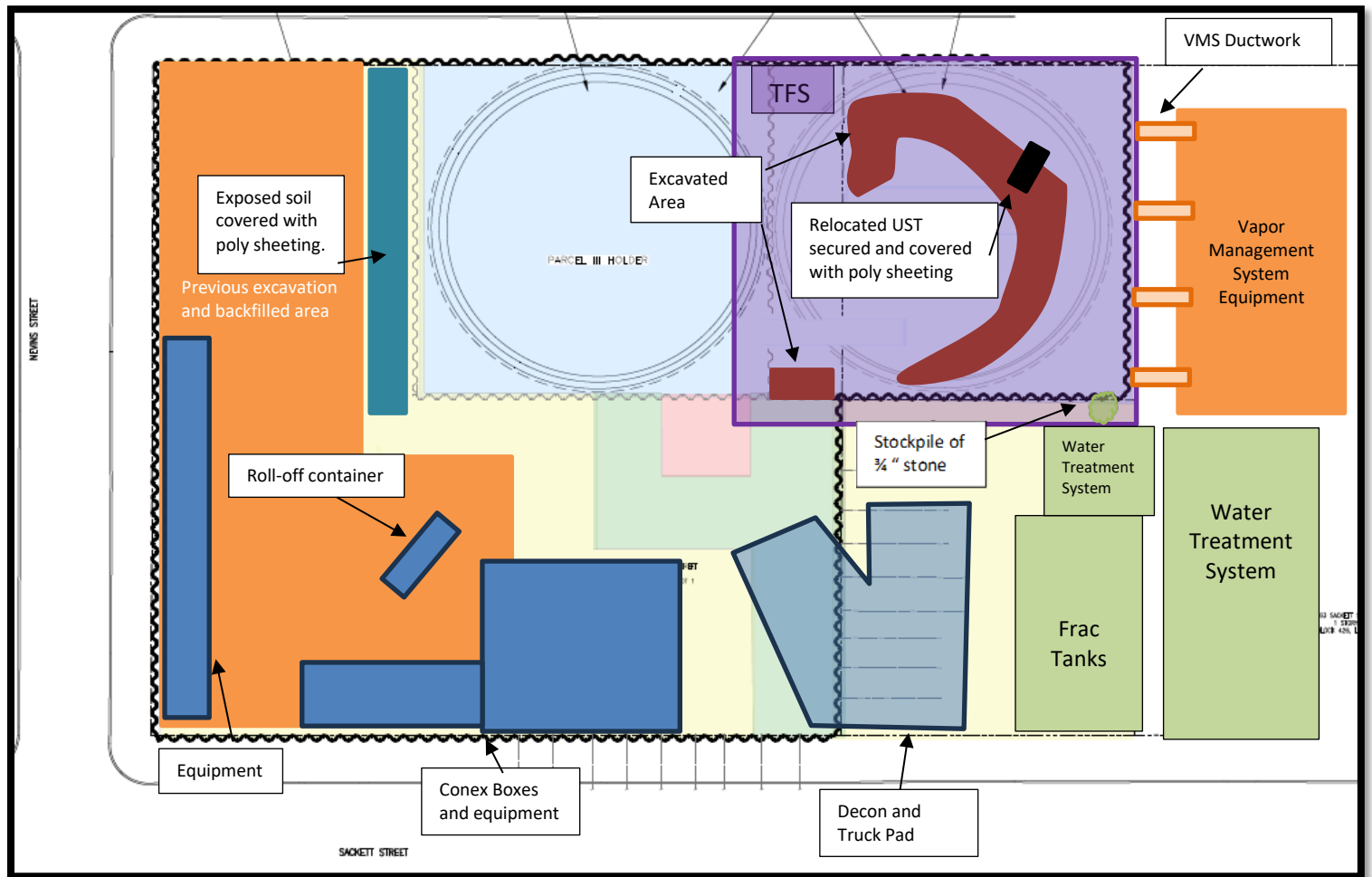
Date	Time	Totalizer Reading
8/09/24	15:15	100,823,700
8/12/24	7:10	100,823,700
8/12/24	11:00	100,823,700
8/12/24	15:15	100,830,650
Water treated and discharged to NYCDEP sewer since last report:		6,950

**Anticipated Upcoming Work Activities**

- Continue demolition, excavation, loadout in former Gas Holder 4 excavation area.
- Continue installation of SOE work along the eastern perimeter of former Gas Holder 4 excavation area.
- Backfill the previously excavated areas west and southwest of former Gas Holder 3 with General Fill material

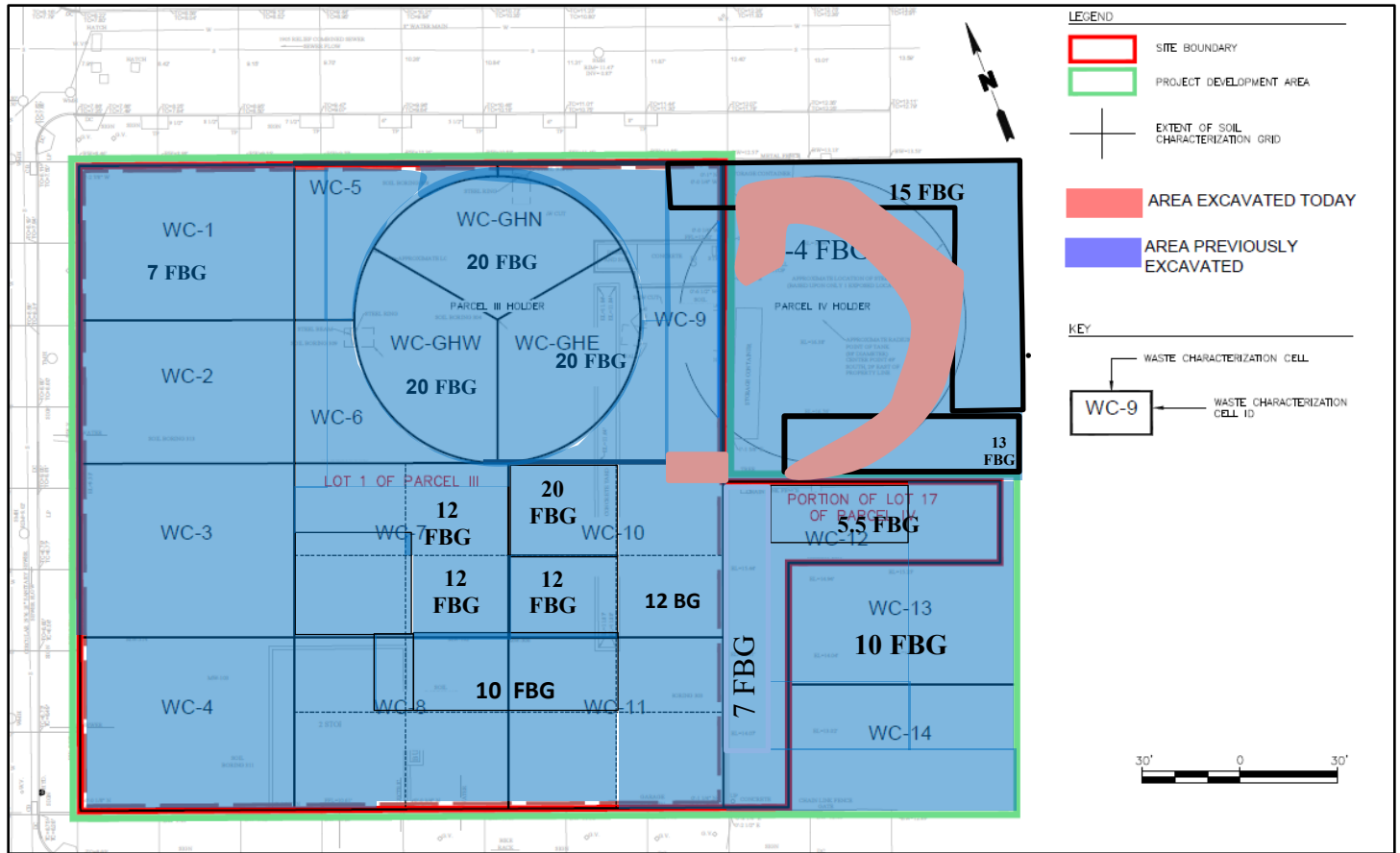
**Site Layout**

<b>PROJECT:</b>	Former Fulton MGP – Parcels III and IV (Site No.: 224051)
<b>ADDRESS:</b>	545 Sackett St., Brooklyn, NY
<b>PREPARED BY:</b>	Roux Environmental Engineering and Geology, D.P.C.
<b>DATE:</b>	August 12, 2024
<b>WEATHER:</b>	Temp: 67-82°F, Sunny, RH: 51% Pressure: 29.98 in Hg Wind: West @ 9 mph
<b>TIME:</b>	07:00 – 15:15



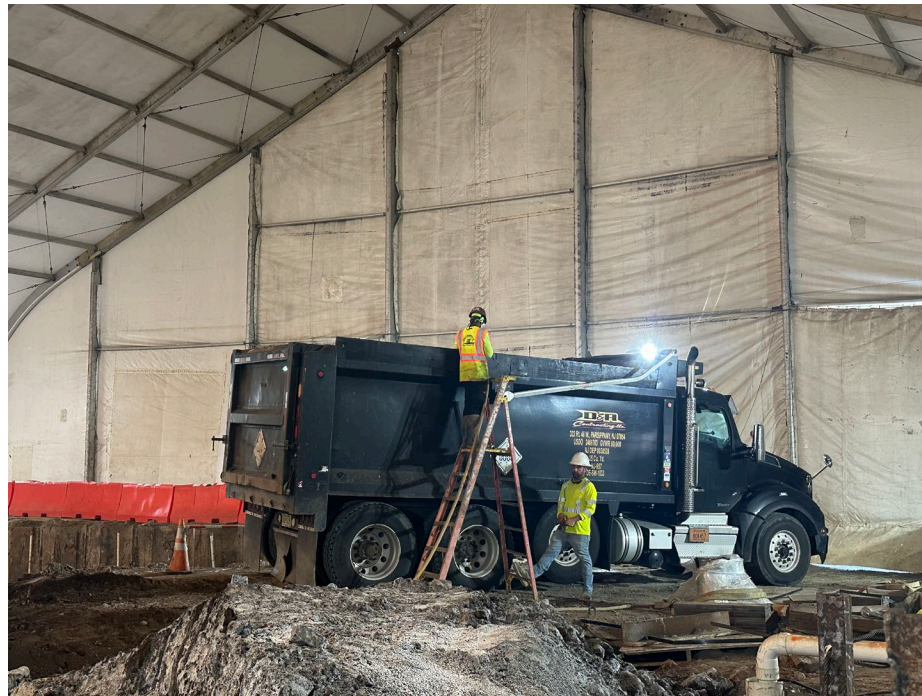
<b>PROJECT:</b>	Former Fulton MGP – Parcels III and IV (Site No.: 224051)
<b>ADDRESS:</b>	545 Sackett St., Brooklyn, NY
<b>PREPARED BY:</b>	Roux Environmental Engineering and Geology, D.P.C.
<b>DATE:</b>	August 12, 2024
<b>WEATHER:</b>	Temp: 67-82°F, Sunny, RH: 51% Pressure: 29.98 in Hg Wind: West @ 9 mph
<b>TIME:</b>	07:00 – 15:15

### Excavation Diagram





PROJECT:	Former Fulton MGP – Parcels III and IV (Site No.: 224051)
ADDRESS:	545 Sackett St., Brooklyn, NY
PREPARED BY:	Roux Environmental Engineering and Geology, D.P.C.
DATE:	August 12, 2024
WEATHER:	Temp: 67-82°F, Sunny, RH: 51% Pressure: 29.98 in Hg Wind: West @ 9 mph
TIME:	07:00 – 15:15



**Photo 1:**

Looking south, view of CEI applying Atmos odor suppressant foam inside the truck prior leaving the TFS.



**Photo 2:**

Looking southeast, view of CEI performing excavation activities within waste characterization grid WC-GH4-1 and applying Atmos odor suppressant foam.

PROJECT:	Former Fulton MGP – Parcels III and IV (Site No.: 224051)
ADDRESS:	545 Sackett St., Brooklyn, NY
PREPARED BY:	Roux Environmental Engineering and Geology, D.P.C.
DATE:	August 12, 2024
WEATHER:	Temp: 67-82°F, Sunny, RH: 51% Pressure: 29.98 in Hg Wind: West @ 9 mph
TIME:	07:00 – 15:15



**Photo 3:**  
Looking east, view of CEI temporarily relocating the discovered UST within waste characterization grid WC-GH4-1.

**545 Sackett Street**  
**Daily Site Vibration Monitoring Plot**

2024-08-11 thru 2024-8-12



## S1: On-site

