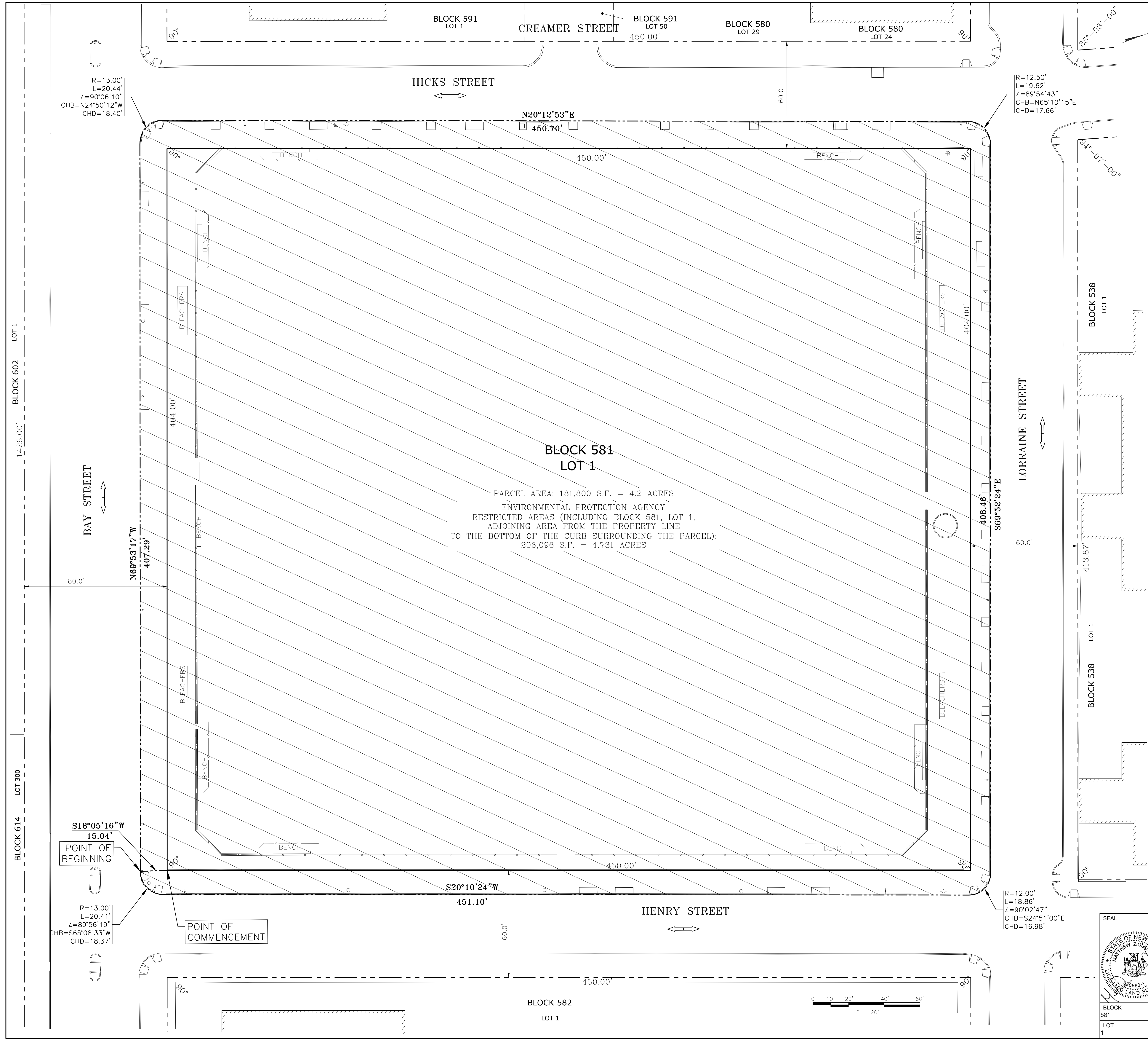


APPENDIX A
PROPERTY DOCUMENTATION



PARCEL DESCRIPTION

BLOCK 581, LOT 1

ALL THAT CERTAIN PLOT, PIECE OR PARCEL OF LAND LYING, BEING AND SITUATE IN THE BOROUGH AND COUNTY OF BROOKLYN, CITY AND STATE OF NEW YORK BEING BOUNDED AND DESCRIBED AS FOLLOWS:

BEGINNING (P.O.B.) AT THE INTERSECTION OF THE EASTERLY LINE OF HICKS STREET WITH THE SOUTHERLY LINE OF LORRAINE STREET (60' WIDE);

RUNNING THENCE EASTERLY ALONG SAID SOUTHERLY LINE OF LORRAINE STREET 404.00 FEET TO THE INTERSECTION OF THE EASTERLY LINE OF LORRAINE STREET WITH THE WESTERLY LINE OF HENRY STREET (60' WIDE);

THENCE SOUTHERLY AT RIGHT ANGLES ALONG SAID WESTERLY LINE OF HENRY STREET 450.00 FEET TO THE INTERSECTION OF THE WESTERLY LINE OF HENRY STREET WITH THE NORTHERLY LINE OF BAY STREET (80' WIDE);

THENCE WESTERLY AT RIGHT ANGLES ALONG SAID NORTHERLY LINE OF BAY STREET 404.00 FEET TO THE INTERSECTION OF THE EASTERLY LINE OF HICKS STREET (60' WIDE) WITH THE NORTHERLY LINE OF BAY STREET;

THENCE NORTHERLY AT RIGHT ANGLES ALONG SAID EASTERLY LINE OF HICKS STREET 450.00 FEET TO THE POINT OF BEGINNING.

CONTAINING 181,800 SQUARE FEET OR 4.2 ACRES

EPA RESTRICTED AREA DESCRIPTION

BLOCK 581, LOT 1 AND ADJOINING SIDEWALK

BEING IN THE BOROUGH OF BROOKLYN, COUNTY OF KINGS, CITY AND STATE OF NEW YORK AS DEPICTED IN THE FINAL SECTION MAP NO. 32 AND BEING LAID OUT INSIDE RED HOOK BALLFIELD AREA BOUNDED AND DESCRIBED AS FOLLOWS:

COMMENCING AT THE INTERSECTION OF THE NORTHERLY SIDE OF BAY STREET (80 FEET WIDE) AND THE WESTERLY SIDE OF HENRY STREET (60 FEET WIDE), RUNNING THENCE SOUTH 18 DEGREES 05 MINUTES 16 SECONDS WEST A DISTANCE OF 15.04 FEET TO THE POINT OF BEGINNING (P.O.B.); THENCE,

GENERALLY, ALONG BOTTOM OF STEEL FACED CURB OF NORTH SIDE OF BAY STREET, BEARING NORTH 69 DEGREES 53 MINUTES 17 SECONDS WEST A DISTANCE 407.29 FEET, TO A POINT OF CURVATURE; THENCE,

NORTHWESTERLY, AN ARC BEARING TO THE RIGHT, A RADIUS OF 13.00 FEET, AN ARC LENGTH OF 20.44 FEET, A CHORD BEARING AND DISTANCE OF NORTH 24 DEGREES 50 MINUTES 12 SECONDS WEST, 18.40 FEET TO A POINT; THENCE,

GENERALLY, ALONG BOTTOM CURB OF EAST SIDE OF HICKS STREET, BEARING NORTH 20 DEGREES 12 MINUTES 53 SECONDS EAST A DISTANCE 450.70 FEET TO A POINT OF CURVATURE;

NORTHEASTERLY, AN ARC BEARING TO THE RIGHT, A RADIUS OF 12.50 FEET, AN ARC LENGTH OF 19.62 FEET, A CHORD BEARING AND DISTANCE OF NORTH 65 DEGREES 10 MINUTES 15 SECONDS EAST, 17.66 FEET TO A POINT; THENCE,

GENERALLY, ALONG BOTTOM OF CURB OF SOUTH SIDE OF LORRAINE STREET, BEARING SOUTH 69 DEGREES 52 MINUTES 24 SECONDS EAST A DISTANCE 408.46 FEET, TO A POINT OF CURVATURE; THENCE,

SOUTHEASTERLY, AN ARC BEARING TO THE RIGHT, A RADIUS OF 12.00 FEET, AN ARC LENGTH OF 18.86 FEET, A CHORD BEARING AND DISTANCE OF SOUTH 24 DEGREES 51 MINUTES 00 SECONDS EAST, 16.98 FEET TO A POINT; THENCE,

GENERALLY, ALONG BOTTOM CURB OF WEST SIDE OF HENRY STREET, BEARING SOUTH 20 DEGREES 10 MINUTES 24 SECONDS WEST A DISTANCE 451.10 FEET TO A POINT OF CURVATURE; THENCE,

SOUTHWESTERLY, AN ARC BEARING TO THE RIGHT, A RADIUS OF 13.00 FEET, AN ARC LENGTH OF 20.41 FEET, A CHORD BEARING AND DISTANCE OF SOUTH 65 DEGREES 08 MINUTES 33 SECONDS WEST, 18.37 FEET TO THE POINT AND PLACE OF BEGINNING.

SAID PREMISES COVERING AN AREA OF 206,096 SQUARE FEET EQUALS 4.731 ACRES.

SAID PREMISES BEING IN BLOCK 581 LOT 1 AND THE ADJOINING AREA FROM THE PROPERTY LINE TO THE BOTTOM OF THE CURB SURROUNDING THE PARCEL.

NOTES:

1. THE MAP IS BASED ON A CITY OF NEW YORK PARKS AND RECREATION SURVEY ENTITLED, "TOPOGRAPHIC SURVEY, BLOCK 581, LOT 1." DRAWING No. V101.00, CONTRACT No. B126-116M, 1 SHEET, MAP FILE No. B-T-126-2101.
2. EPA AREA OF RESTRICTION PROVIDED BY CITY OF NEW YORK PARKS AND RECREATION.

LEGEND

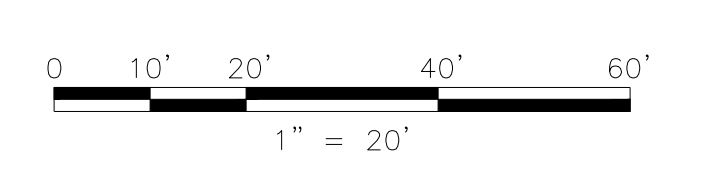
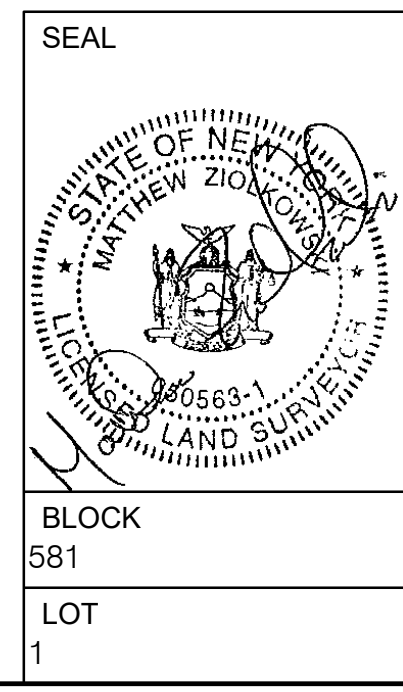
EPA RESTRICTED AREA

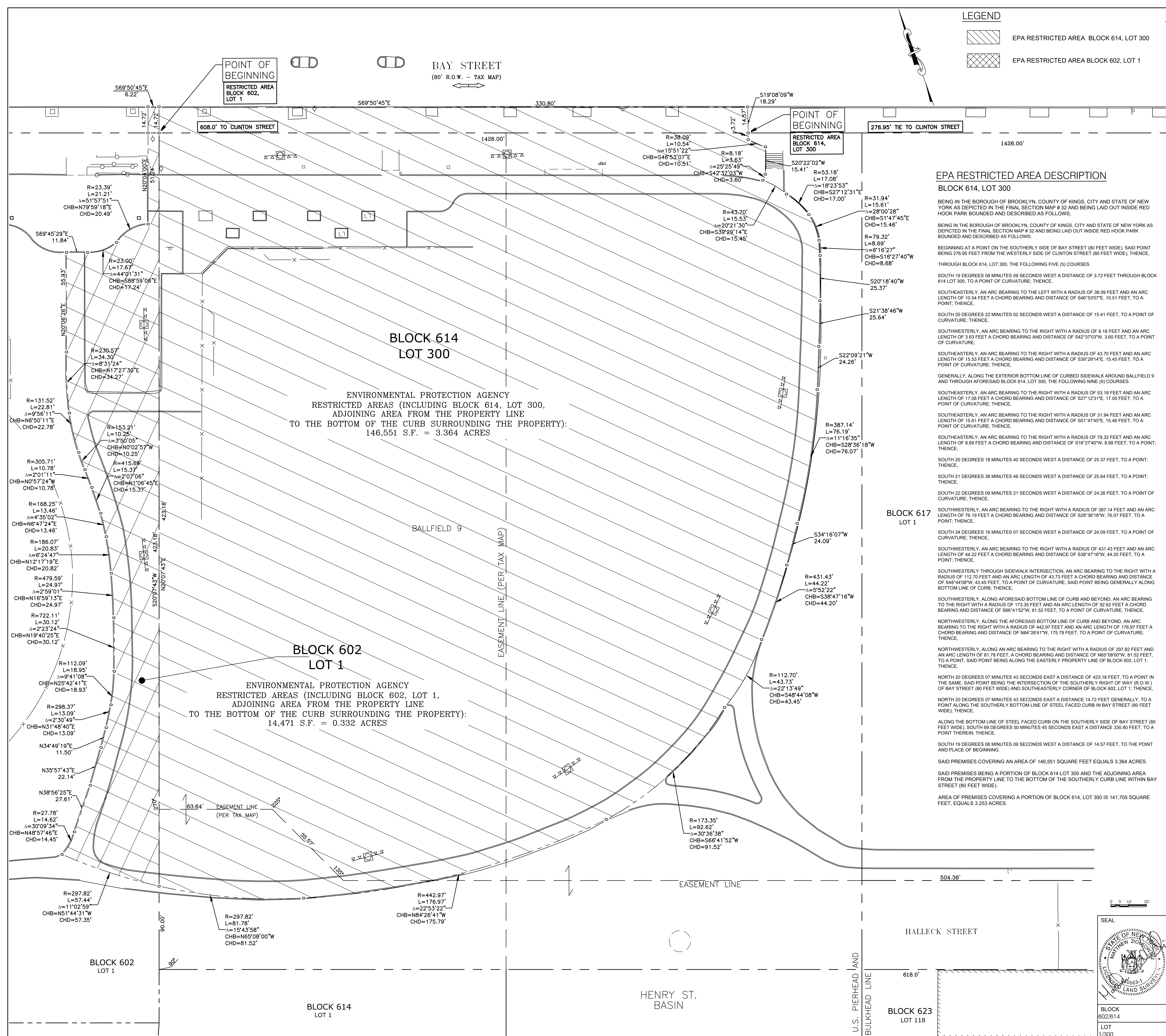
MUÑOZ ENGINEERING P.C.
 505 EIGHTH AVENUE, NEW YORK, NY 10018
 Phone: 212-967-6588

CITY OF NEW YORK PARKS & RECREATION
 OLMSTED CENTER
 FLUSHING MEADOWS CORONA PARK
 FLUSHING, NEW YORK 11368

PROJECT TITLE
 THE REMEDIATION AND RECONSTRUCTION OF BALL FIELDS 5-8 BOUNDED BY LORRAINE, HICKS, BAY, AND HENRY STREETS, IN THE RED HOOK RECREATION AREA, BOROUGH OF BROOKLYN

DRAWING TITLE EPA DEED RESTRICTION EXHIBIT		CHECKED BY MATTHEW ZIOLKOWSKI	
DESIGNED BY B-SCAN	DRAWN BY KOJO & ZOLTAN	DRAWING NO. V-101	CONTRACT NO. B126-116M
SCALE 1" = 20'-0"		DATE 6/12/19	
BLOCK 581 LOT 1		SHEET No. 1 OF 1 SHEETS	





LEGEND

- EPA RESTRICTED AREA BLOCK 614, LOT 300
- EPA RESTRICTED AREA BLOCK 602, LOT 1

GENERAL NOTES

1. PROJECT AREA KNOWN AS LOT 1, BLOCK 602, LOT 300, BLOCK 614, LOT 1, BLOCK 617, IN RED HOOK RECREATIONAL PARK IN THE BOROUGH OF BROOKLYN, NEW YORK.
2. THE MAP IS BASED ON A CITY OF NEW YORK PARKS AND RECREATION SURVEY ENTITLED, "TOPOGRAPHIC SURVEY, BLOCK 602, LOT 1, BLOCK 614, LOT 300 AND BLOCK 617, LOT 1," DRAWING NO. V101.00, CONTRACT NO. B126-117M, 3 SHEETS, MAP FILE NO. B-T-126-203.
3. EPA AREA OF RESTRICTION PROVIDED BY CITY OF NEW YORK PARKS AND RECREATION.

EPA RESTRICTED AREA DESCRIPTION

BLOCK 614, LOT 300

BEING IN THE BOROUGH OF BROOKLYN, COUNTY OF KINGS, CITY AND STATE OF NEW YORK AS DEPICTED IN THE FINAL SECTION MAP # 32 AND BEING LAID OUT INSIDE RED HOOK PARK BOUNDED AND DESCRIBED AS FOLLOWS:

BEING IN THE BOROUGH OF BROOKLYN, COUNTY OF KINGS, CITY AND STATE OF NEW YORK AS DEPICTED IN THE FINAL SECTION MAP # 32 AND BEING LAID OUT INSIDE RED HOOK PARK BOUNDED AND DESCRIBED AS FOLLOWS:

BEGINNING AT A POINT ON THE SOUTHERLY SIDE OF BAY STREET (80 FEET WIDE), SAID POINT BEING 276.95 FEET FROM THE WESTERLY SIDE OF CLINTON STREET (80 FEET WIDE), THENCE, THROUGH BLOCK 614, LOT 300, THE FOLLOWING FIVE (5) COURSES:

SOUTH 19 DEGREES 08 MINUTES 09 SECONDS WEST A DISTANCE OF 3.72 FEET THROUGH BLOCK 614 LOT 300, TO A POINT OF CURVATURE, THENCE,

SOUTHEASTERLY, AN ARC BEARING TO THE LEFT WITH A RADIUS OF 38.09 FEET AND AN ARC LENGTH OF 10.54 FEET A CHORD BEARING AND DISTANCE OF S46°53'07"E, 10.51 FEET, TO A POINT, THENCE,

SOUTH 22 DEGREES 22 MINUTES 02 SECONDS WEST A DISTANCE OF 15.41 FEET, TO A POINT OF CURVATURE, THENCE,

SOUTHWESTERLY, AN ARC BEARING TO THE RIGHT WITH A RADIUS OF 8.18 FEET AND AN ARC LENGTH OF 3.63 FEET A CHORD BEARING AND DISTANCE OF S27°12'31"E, 3.60 FEET, TO A POINT OF CURVATURE, THENCE,

SOUTHEASTERLY, THROUGH BLOCK 602, LOT 1, AN ARC BEARING TO THE RIGHT WITH A RADIUS OF 43.70 FEET AND AN ARC LENGTH OF 15.53 FEET A CHORD BEARING AND DISTANCE OF S39°29'14"E, 15.45 FEET, TO A POINT OF CURVATURE, THENCE,

GENERALLY, ALONG THE EXTERIOR BOTTOM LINE OF CURBED SIDEWALK AROUND BALLFIELD 9 AND THROUGH AFORESAID BLOCK 614, LOT 300, THE FOLLOWING NINE (9) COURSES:

SOUTHEASTERLY, AN ARC BEARING TO THE RIGHT WITH A RADIUS OF 53.18 FEET AND AN ARC LENGTH OF 17.08 FEET A CHORD BEARING AND DISTANCE OF S27°12'31"E, 17.00 FEET, TO A POINT OF CURVATURE, THENCE,

SOUTHEASTERLY, AN ARC BEARING TO THE RIGHT WITH A RADIUS OF 31.94 FEET AND AN ARC LENGTH OF 10.51 FEET A CHORD BEARING AND DISTANCE OF S31°48'40"E, 10.51 FEET, TO A POINT OF CURVATURE, THENCE,

SOUTH 20 DEGREES 18 MINUTES 40 SECONDS WEST A DISTANCE OF 25.37 FEET, TO A POINT, THENCE,

SOUTH 21 DEGREES 38 MINUTES 46 SECONDS WEST A DISTANCE OF 25.64 FEET, TO A POINT, THENCE,

SOUTH 22 DEGREES 09 MINUTES 21 SECONDS WEST A DISTANCE OF 24.26 FEET, TO A POINT OF CURVATURE, THENCE,

SOUTHWESTERLY, AN ARC BEARING TO THE RIGHT WITH A RADIUS OF 387.14 FEET AND AN ARC LENGTH OF 76.19 FEET A CHORD BEARING AND DISTANCE OF S28°36'18"W, 76.07 FEET, TO A POINT, THENCE,

SOUTH 34 DEGREES 16 MINUTES 07 SECONDS WEST A DISTANCE OF 24.09 FEET, TO A POINT OF CURVATURE, THENCE,

SOUTHWESTERLY, AN ARC BEARING TO THE RIGHT WITH A RADIUS OF 431.43 FEET AND AN ARC LENGTH OF 44.22 FEET A CHORD BEARING AND DISTANCE OF S38°47'18"W, 44.20 FEET, TO A POINT, THENCE,

SOUTHWESTERLY THROUGH SIDEWALK INTERSECTION, AN ARC BEARING TO THE RIGHT WITH A RADIUS OF 112.70 FEET AND AN ARC LENGTH OF 43.73 FEET A CHORD BEARING AND DISTANCE OF S48°48'18"W, 43.45 FEET, TO A POINT OF CURVATURE, SAID POINT BEING GENERALLY ALONG BOTTOM LINE OF CURB, THENCE,

SOUTHWESTERLY, ALONG AFORESAID BOTTOM LINE OF CURB AND BEYOND, AN ARC BEARING TO THE RIGHT WITH A RADIUS OF 173.35 FEET AND AN ARC LENGTH OF 92.62 FEET A CHORD BEARING AND DISTANCE OF S66°41'52"W, 91.52 FEET, TO A POINT OF CURVATURE, THENCE,

NORTHWESTERLY, ALONG THE AFORESAID BOTTOM LINE OF CURB AND BEYOND, AN ARC BEARING TO THE RIGHT WITH A RADIUS OF 442.97 FEET AND AN ARC LENGTH OF 176.97 FEET A CHORD BEARING AND DISTANCE OF N84°26'41"W, 175.79 FEET, TO A POINT OF CURVATURE, THENCE,

NORTHWESTERLY, ALONG AN ARC BEARING TO THE RIGHT WITH A RADIUS OF 297.82 FEET AND AN ARC LENGTH OF 81.78 FEET, A CHORD BEARING AND DISTANCE OF N60°00'00"W, 81.52 FEET, TO A POINT, SAID POINT BEING ALONG THE EASTERLY PROPERTY LINE OF BLOCK 602, LOT 1, THENCE,

NORTH 20 DEGREES 07 MINUTES 43 SECONDS EAST A DISTANCE OF 423.18 FEET, TO A POINT IN THE SAME, SAID POINT BEING THE INTERSECTION OF THE SOUTHERLY RIGHT OF WAY (R.O.W.) OF BAY STREET (80 FEET WIDE) AND SOUTHEASTERLY CORNER OF BLOCK 602, LOT 1, THENCE,

NORTH 20 DEGREES 07 MINUTES 43 SECONDS EAST A DISTANCE 14.72 FEET GENERALLY, TO A POINT ALONG THE SOUTHERLY BOTTOM LINE OF STEEL FACED CURB IN BAY STREET (80 FEET WIDE), THENCE,

ALONG THE BOTTOM LINE OF STEEL FACED CURB ON THE SOUTHERLY SIDE OF BAY STREET (80 FEET WIDE), SOUTH 69 DEGREES 50 MINUTES 45 SECONDS EAST A DISTANCE 330.80 FEET, TO A POINT THEREIN, THENCE,

SOUTH 19 DEGREES 08 MINUTES 09 SECONDS WEST A DISTANCE OF 14.57 FEET, TO THE POINT AND PLACE OF BEGINNING.

SAID PREMISES COVERING AN AREA OF 146,551 SQUARE FEET EQUALS 3.364 ACRES.

SAID PREMISES BEING A PORTION OF BLOCK 614 LOT 300 AND THE ADJOINING AREA FROM THE PROPERTY LINE TO THE BOTTOM OF THE SOUTHERLY CURB LINE WITHIN BAY STREET (80 FEET WIDE).

AREA OF PREMISES COVERING A PORTION OF BLOCK 614, LOT 300 IS 141,705 SQUARE FEET, EQUALS 3.253 ACRES.

EPA RESTRICTED AREA DESCRIPTION

BLOCK 602, LOT 1

BEING IN THE BOROUGH OF BROOKLYN, COUNTY OF KINGS, CITY AND STATE OF NEW YORK AS DEPICTED IN THE FINAL SECTION MAP # 32 AND BEING LAID OUT INSIDE RED HOOK PARK BOUNDED AND DESCRIBED AS FOLLOWS:

BEING IN THE BOROUGH OF BROOKLYN, COUNTY OF KINGS, CITY AND STATE OF NEW YORK AS DEPICTED IN THE FINAL SECTION MAP # 32 AND BEING LAID OUT INSIDE RED HOOK PARK BOUNDED AND DESCRIBED AS FOLLOWS:

BEGINNING AT A POINT IN THE SOUTHERLY SIDE OF BAY STREET (80 FEET WIDE) AND THE NORTHWESTERLY CORNER OF BLOCK 614, LOT 300, SAID POINT BEING 608.00 FEET WEST FROM WESTERLY SIDE OF CLINTON STREET (80 FEET WIDE), THENCE,

ALONG THE WESTERLY PROPERTY LINE OF AFORESAID BLOCK 614, LOT 300, SOUTH 20 DEGREES 07 MINUTES 43 SECONDS WEST A DISTANCE 423.18 FEET TO A POINT OF CURVATURE IN THE SAME, THENCE,

NORTHWESTERLY, THROUGH BLOCK 602, LOT 1, AN ARC BEARING TO THE RIGHT WITH A RADIUS OF 297.82 FEET AND AN ARC LENGTH OF 81.78 FEET A CHORD BEARING AND DISTANCE OF N60°00'00"W, 81.52 FEET, TO A POINT, THENCE,

NORTH 38 DEGREES 56 MINUTES 25 SECONDS EAST A DISTANCE 27.61 FEET, TO A POINT, THENCE,

NORTH 35 DEGREES 57 MINUTES 43 SECONDS EAST A DISTANCE 22.14 FEET, TO A POINT, THENCE,

NORTH 34 DEGREES 49 MINUTES 19 SECONDS EAST A DISTANCE 11.50 FEET, TO A POINT OF CURVATURE, THENCE,

NORTHEASTERLY, AN ARC BEARING TO THE LEFT WITH A RADIUS OF 298.37 FEET AND AN ARC LENGTH OF 13.09 FEET A CHORD BEARING AND DISTANCE OF N31°48'40"E, 13.09 FEET, TO A POINT OF CURVATURE, THENCE,

NORTHEASTERLY, AN ARC BEARING TO THE LEFT WITH A RADIUS OF 112.09 FEET AND AN ARC LENGTH OF 18.95 FEET A CHORD BEARING AND DISTANCE OF N29°42'41"E, 18.93 FEET, TO A POINT OF CURVATURE, THENCE,

NORTHEASTERLY, AN ARC BEARING TO THE LEFT WITH A RADIUS OF 112.09 FEET AND AN ARC LENGTH OF 18.95 FEET A CHORD BEARING AND DISTANCE OF N29°42'41"E, 18.93 FEET, TO A POINT OF CURVATURE, THENCE,

NORTHEASTERLY, AN ARC BEARING TO THE LEFT WITH A RADIUS OF 722.11 FEET AND AN ARC LENGTH OF 24.97 FEET A CHORD BEARING AND DISTANCE OF N19°40'25"E, 30.12 FEET, TO A POINT OF CURVATURE, THENCE,

NORTHEASTERLY, AN ARC BEARING TO THE LEFT WITH A RADIUS OF 479.59 FEET AND AN ARC LENGTH OF 24.97 FEET A CHORD BEARING AND DISTANCE OF N19°40'25"E, 24.97 FEET, TO A POINT OF CURVATURE, THENCE,

NORTHEASTERLY, AN ARC BEARING TO THE LEFT WITH A RADIUS OF 186.07 FEET AND AN ARC LENGTH OF 20.83 FEET A CHORD BEARING AND DISTANCE OF N12°17'19"E, 20.82 FEET, TO A POINT OF CURVATURE, THENCE,

NORTHEASTERLY, AN ARC BEARING TO THE LEFT WITH A RADIUS OF 168.25 FEET AND AN ARC LENGTH OF 13.46 FEET A CHORD BEARING AND DISTANCE OF N06°47'24"E, 13.46 FEET, TO A POINT OF CURVATURE, THENCE,

NORTHEASTERLY, AN ARC BEARING TO THE LEFT WITH A RADIUS OF 415.69 FEET AND AN ARC LENGTH OF 15.37 FEET A CHORD BEARING AND DISTANCE OF N01°06'45"E, 15.37 FEET, TO A POINT OF CURVATURE, THENCE,

NORTHWESTERLY, AN ARC BEARING TO THE RIGHT WITH A RADIUS OF 305.71 FEET AND LENGTH 10.78 FEET A CHORD BEARING AND DISTANCE OF N00°57'24"W, 10.78 FEET, TO A POINT OF CURVATURE, THENCE,

NORTHWESTERLY, AN ARC BEARING TO THE RIGHT WITH A RADIUS OF 153.21 FEET AND LENGTH 10.25 FEET A CHORD BEARING AND DISTANCE OF N00°02'57"W, 10.25 FEET, TO A POINT OF CURVATURE, THENCE,

NORTHEASTERLY, AN ARC BEARING TO THE RIGHT WITH A RADIUS OF 131.52 FEET AND LENGTH 22.81 FEET A CHORD BEARING AND DISTANCE OF N06°50'11"E, 22.78 FEET, TO A POINT OF CURVE, THENCE,

NORTHEASTERLY, AN ARC BEARING TO THE RIGHT WITH A RADIUS OF 230.57 FEET AND LENGTH 34.30 FEET A CHORD BEARING AND DISTANCE OF N17°27'30"E, 34.27 FEET, TO A POINT, THENCE,

NORTH 20 DEGREES 06 MINUTES 26 SECONDS EAST A DISTANCE 55.93 FEET, TO A POINT, THENCE,

SOUTH 69 DEGREES 45 MINUTES 29 SECONDS EAST A DISTANCE 11.84 FEET, TO A POINT OF CURVATURE, THENCE,

SOUTHEASTERLY, AN ARC BEARING TO THE LEFT WITH A RADIUS OF 23.00 FEET AND AN ARC LENGTH OF 17.24 FEET A CHORD BEARING AND DISTANCE OF S88°59'06"E, 17.24 FEET, TO A POINT, THENCE,

NORTH 20 DEGREES 04 MINUTES 00 SECONDS EAST A DISTANCE 51.24 FEET, TO A POINT IN THE SOUTHERLY RIGHT OF WAY (R.O.W.) OF BAY STREET (80 FEET WIDE), THENCE,

NORTH 20 DEGREES 04 MINUTES 00 SECONDS EAST A DISTANCE 14.72 FEET GENERALLY, TO A POINT IN THE SOUTHERLY RIGHT OF WAY (R.O.W.) OF BAY STREET (80 FEET WIDE), THENCE,

ALONG THE BOTTOM LINE OF STEEL FACED CURB ON THE SOUTHERLY SIDE OF BAY STREET (80 FEET WIDE), SOUTH 69 DEGREES 50 MINUTES 45 SECONDS EAST A DISTANCE 6.22 FEET TO A POINT THEREIN, THENCE,

SOUTH 20 DEGREES 07 MINUTES 43 SECONDS WEST A DISTANCE OF 14.72 FEET, TO THE POINT AND PLACE OF BEGINNING.

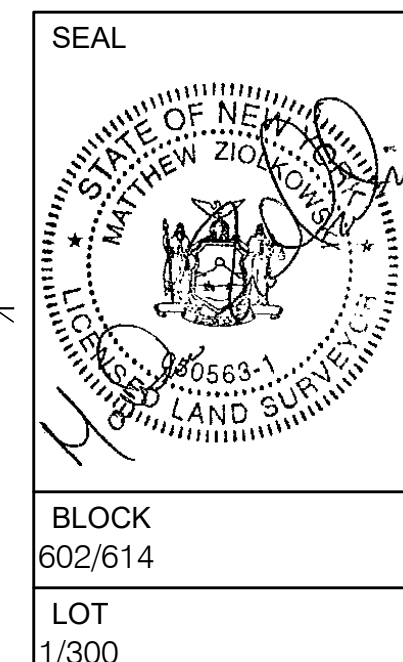
SAID PREMISES COVERING AN AREA OF 14,471 SQUARE FEET EQUALS 0.332 ACRES.

SAID PREMISES BEING A PORTION OF BLOCK 602 LOT 1 AND THE ADJOINING AREA FROM THE PROPERTY LINE TO THE BOTTOM OF THE SOUTHERLY CURB LINE WITHIN BAY STREET (80 FEET WIDE).

AREA OF PREMISES COVERING A PORTION OF BLOCK 602, LOT 1 IS 14,379 SQUARE FEET, EQUALS 0.330 ACRES.



CITY OF NEW YORK
PARKS & RECREATION
 OLMSTED CENTER
 FLUSHING MEADOWS CORONA PARK
 FLUSHING, NEW YORK 11368



PROJECT TITLE CONTRACT DRAWINGS FOR THE RECONSTRUCTION OF BALL FIELD 9 AND SOCCER FIELD 2 LOCATED WEST OF CLINTON STREET BETWEEN BAY AND HALLECK STREETS IN THE RED HOOK RECREATION AREA, BOROUGH OF BROOKLYN		
DRAWING TITLE EPA DEED RESTRICTIONS EXHIBIT		
DESIGNED BY MUNOZ	DRAWN BY K. YEBOAH	CHECKED BY M. ZIOLKOWSKI
B-SCAN	SCALE 1"=20'	DRAWING NO. V101.00
	DATE 06/14/2019	CONTRACT NO. B126-117M
BLOCK 602/614		SHEET No. 1 OF 1 SHEETS
LOT 1/300		