

PHASE II REMEDIAL INVESTIGATION

**Sunnyside Yard
Queens, New York**

Volume IV of V

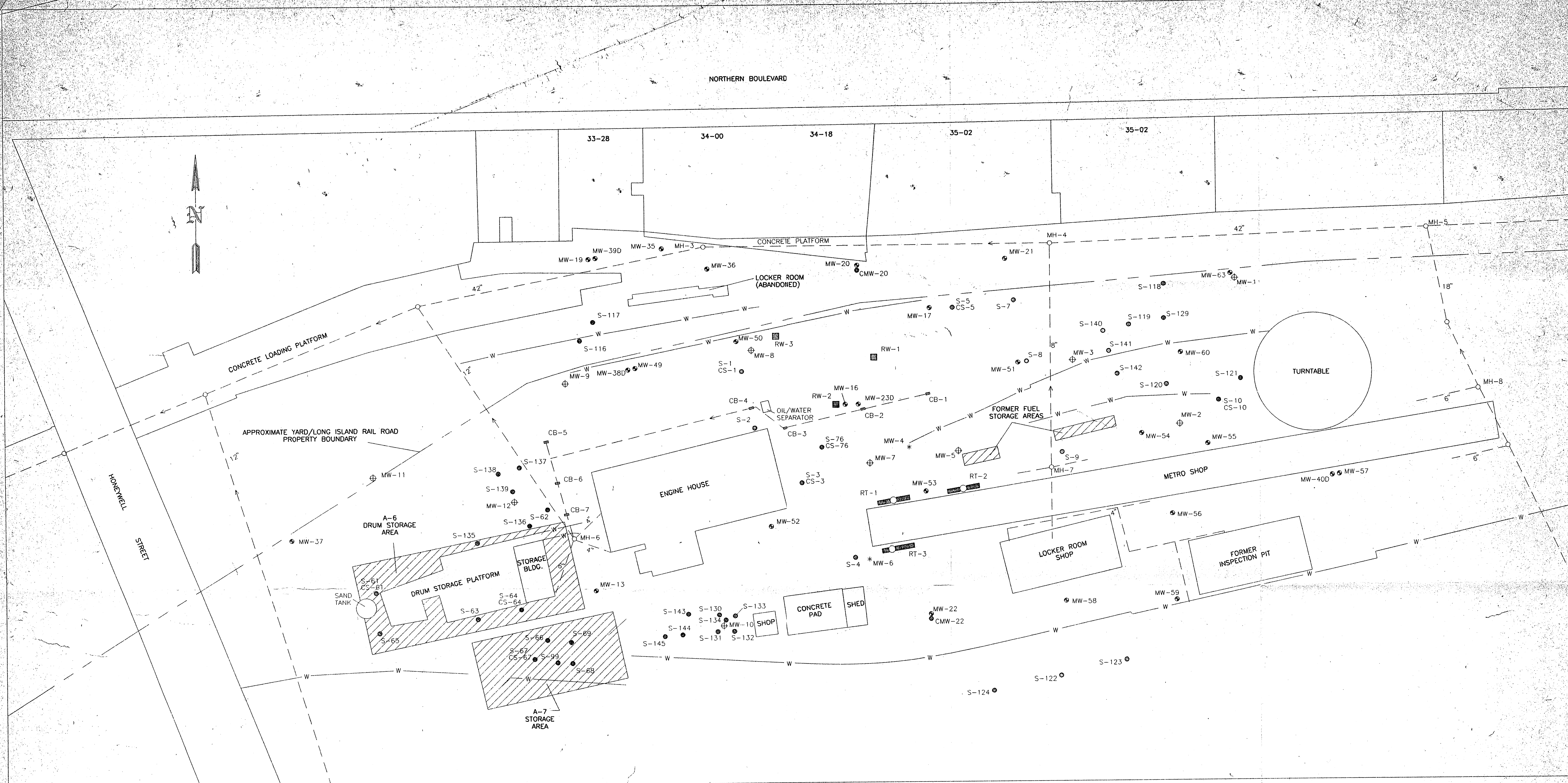
February 15, 1995

Prepared for:

**National Railroad Passenger Corporation
400 Capital Street, N.W.
Washington, D.C. 20001**

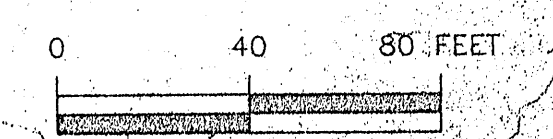
Prepared by:

**ROUX ASSOCIATES, INC.
1377 Motor Parkway
Islandia, New York 11788**



EXPLANATION

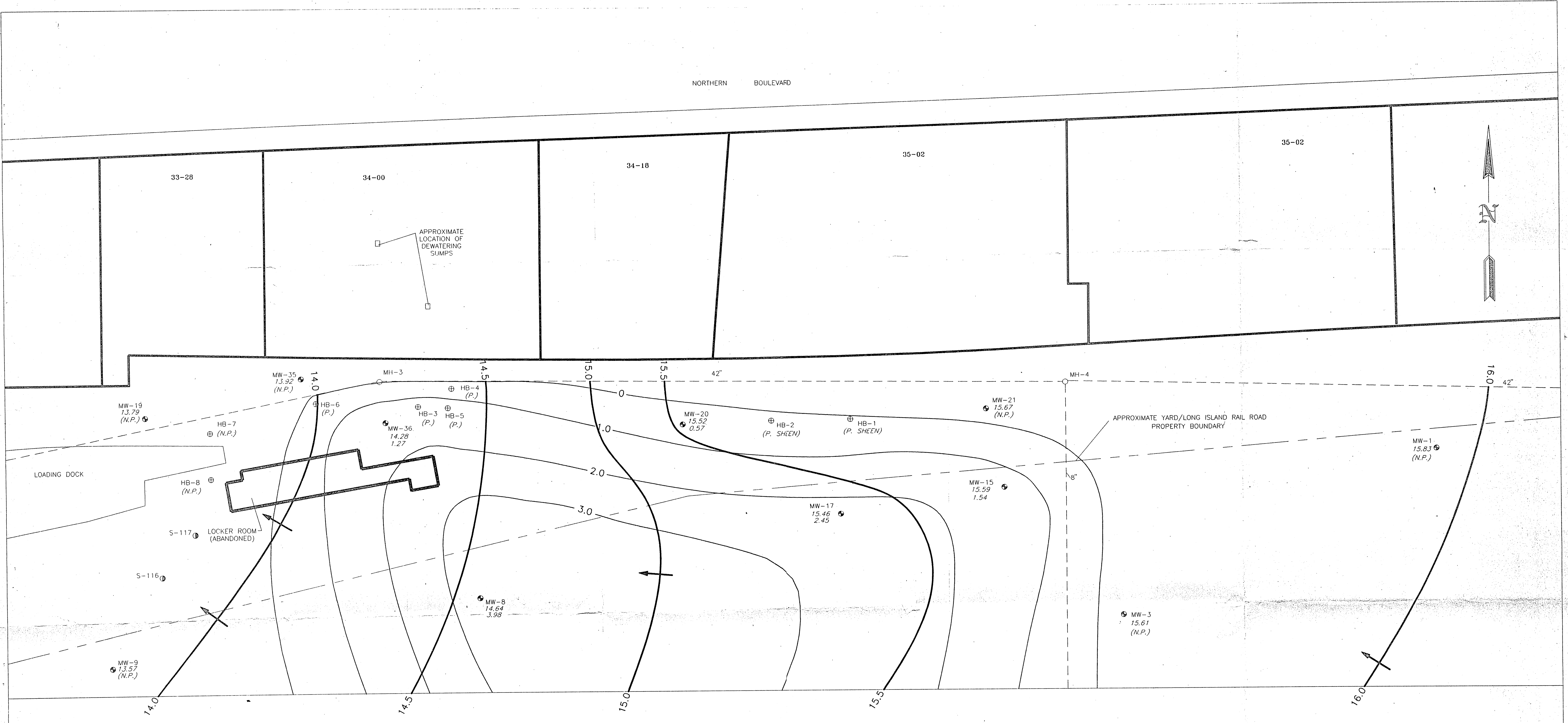
- MW-22 ● EXISTING MONITORING WELL LOCATION AND DESIGNATION
- RW-2 ■ EXISTING RECOVERY WELL LOCATION AND DESIGNATION (INTERIM REMEDIAL MEASURE)
- RT-1 ■ RECOVERY TRENCH LOCATION AND DESIGNATION (INTERIM REMEDIAL MEASURE)
- S-1 ● EXISTING SOIL BORING LOCATION AND DESIGNATION
- CS-1 ● EXISTING SOIL BORING LOCATION AND DESIGNATION
- MW-1 ● EXISTING MONITORING WELL LOCATION AND DESIGNATION (GERAGHTY & MILLER)
- MW-4 * FORMER WELL LOCATION AND DESIGNATION (DESTROYED)
- 42" ○ APPROXIMATE LOCATION AND DIAMETER OF SEWER, TAKEN FROM ENGINEERING DIAGRAMS
- MH-6 ○ SEWER MANHOLE LOCATION AND DESIGNATION
- CB-2 ■ CATCH BASIN LOCATION AND DESIGNATION
- W ——— APPROXIMATE LOCATION OF RETAINING WALL
- ▨ AREAS OF CONCERN



AREA 1 SITE MAP

Prepared For: SUNNYSIDE YARD, QUEENS, NEW YORK

ROUX ASSOCIATES, INC. Environmental Consulting & Management	Compiled by: H.G. Prepared by: G.M. Project Mgr.: J.D.D. File No.: AM526A01	Date: 12/94 Scale: SHOWN Revision: Project: 05526/45V	PLATE 2
--	--	--	------------

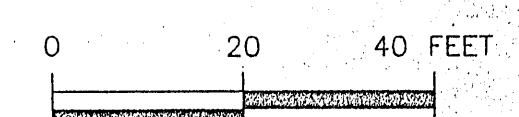


EXPLANATION

- MW-15 15.52 1.54 EXISTING MONITORING WELL LOCATION AND DESIGNATION
- WATER-TABLE ELEVATION IN FEET RELATIVE TO MEAN SEA LEVEL (MEASURED OCTOBER 23, 1991)
- APPARENT THICKNESS OF SEPARATE-PHASE PETROLEUM IN FEET (MEASURED OCTOBER 23, 1991)
- HB-1 HAND BORING LOCATION AND DESIGNATION (COMPLETED OCTOBER 16, 1991)
- S-116 PROPOSED SOIL BORING LOCATION AND DESIGNATION
- 42" APPROXIMATE LOCATION AND DIAMETER OF SEWER, TAKEN FROM ENGINEERING DIAGRAMS
- MH-3 MANHOLE LOCATION AND DESIGNATION
- 14.5 LINE OF EQUAL WATER-TABLE ELEVATION, DASHED WHERE INFERRED
- APPROXIMATE DIRECTION OF GROUND-WATER FLOW
- 2.0 LINE OF EQUAL, APPARENT SEPARATE-PHASE PETROLEUM THICKNESS

NOTES:

(P.) INDICATES SEPARATE-PHASE PETROLEUM WAS DETECTED
(P. SHEEN) INDICATES ONLY A PETROLEUM SHEEN WAS DETECTED (LESS THAN 0.01 FEET)
(N.P.) INDICATES NO SEPARATE-PHASE PETROLEUM WAS DETECTED
WATER-TABLE ELEVATIONS CORRECTED FOR PRESENCE OF SEPARATE-PHASE PETROLEUM (0.824, API, 1989)



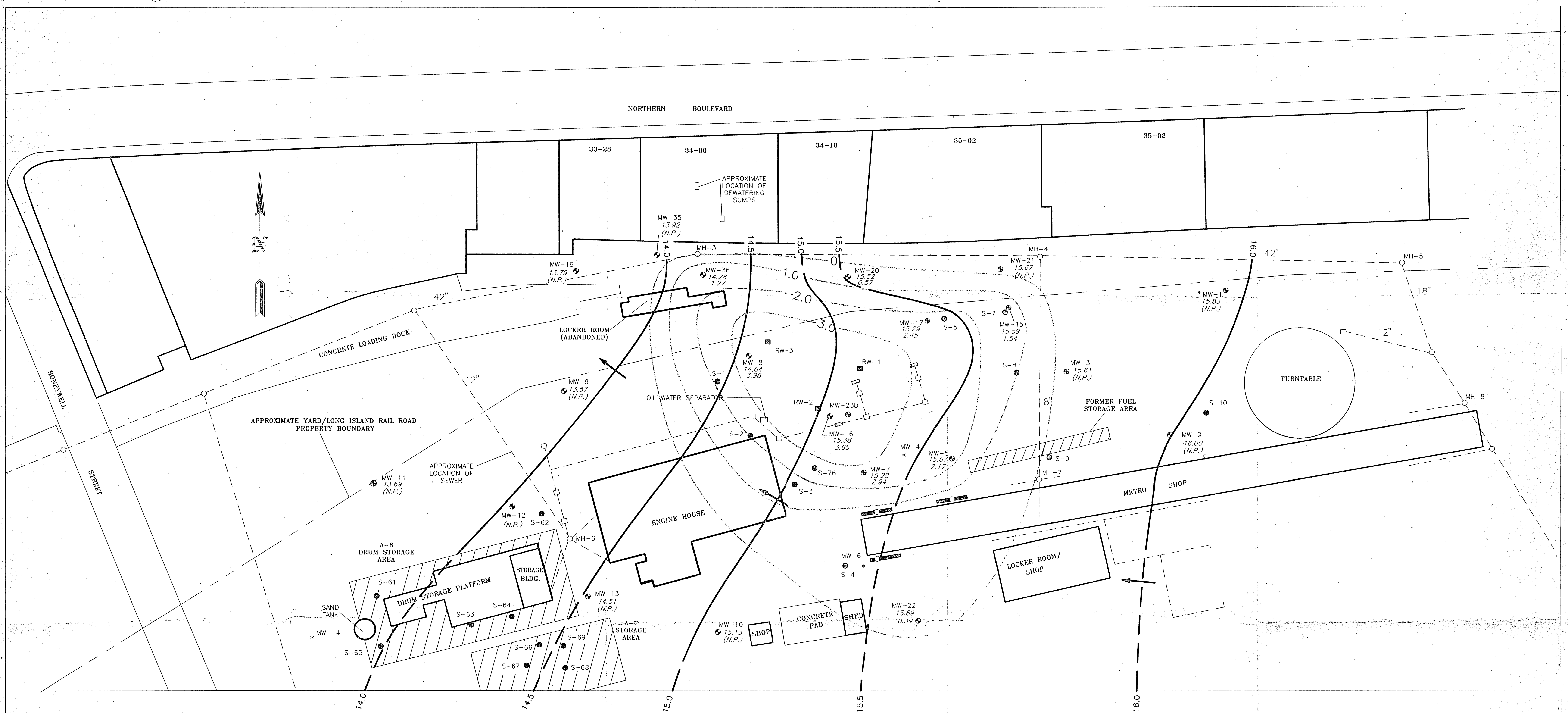
Title:

AREA 1
DETAIL OF ADDITIONAL
OFF-SITE DELINEATION

Prepared For:

SUNNYSIDE YARD, QUEENS, NEW YORK

ROUX ASSOCIATES INC. Environmental Consulting & Management	Compiled by: H.C. Prepared by: C.M. Project Mgr.: J.D.D.	Date: 12/94 Scale: SHOWN Revision:	Plate 3
--	--	--	------------



NOTES:

WATER-LEVEL ELEVATIONS CORRECTED FOR PRESENCE OF SEPARATE-PHASE PETROLEUM. CORRECTION FOR SEPARATE-PHASE PETROLEUM ASSUMES DENSITY OF 0.874 (AVERAGE SPECIFIC GRAVITY OF PETROLEUM SAMPLES COLLECTED IN THE YARD)

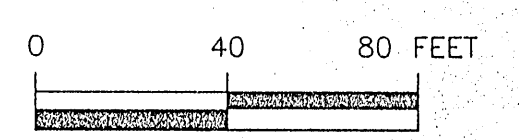
WATER-TABLE ELEVATION FROM MONITORING WELL MW-23D WAS OMITTED BECAUSE SCREEN ZONE DOES NOT INTERSECT WATER TABLE

WATER-TABLE ELEVATION FROM MONITORING WELL MW-12 WAS OMITTED DUE TO ANOMALOUS READINGS

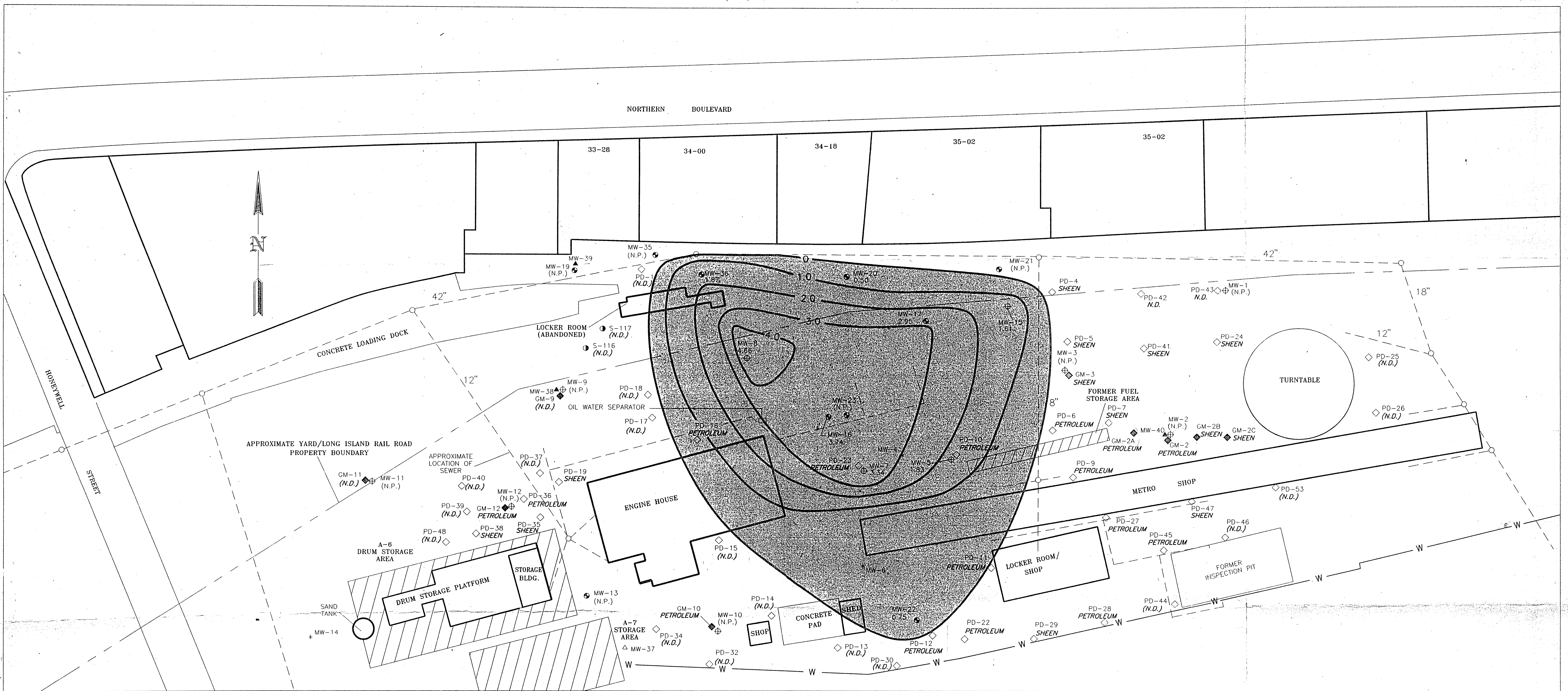
(N.P.) INDICATES NO SEPARATE-PHASE PETROLEUM WAS DETECTED

- EXPLANATION
- MW-22 15.37 0.39
 - EXISTING MONITORING WELL LOCATION AND DESIGNATION
 - WATER-TABLE ELEVATION IN FEET RELATIVE TO MEAN SEA LEVEL
 - APPARENT THICKNESS OF SEPARATE-PHASE PETROLEUM IN FEET
 - (N.P.) INDICATES NO SEPARATE-PHASE PETROLEUM WAS DETECTED IN WELL
 - 15.5 — LINE OF EQUAL WATER-TABLE ELEVATION, DASHED WHERE INFERRED
 - ← APPROXIMATE DIRECTION OF GROUND-WATER FLOW
 - 2.0 — LINE OF APPARENT EQUAL SEPARATE-PHASE PETROLEUM THICKNESS
 - S-3 ● SOIL BORING LOCATION AND DESIGNATION
 - RW-2 ■ EXISTING RECOVERY WELL (INTERIM REMEDIAL MEASURE) LOCATION AND DESIGNATION
 - MW-4 * FORMER WELL LOCATION AND DESIGNATION (DESTROYED)
 - MH-3 ○ MANHOLE LOCATION AND DESIGNATION
 - INFERRED LOCATIONS OF CATCH BASINS TAKEN FROM ENGINEERING DIAGRAMS. UNABLE TO VERIFY BY FIELD INVESTIGATION
 - ▨ AREAS OF CONCERN
 - CATCH BASIN LOCATION
 - RECOVERY TRENCH LOCATION AND DESIGNATION (INTERIM REMEDIAL MEASURE)
 - - - APPROXIMATE LOCATION OF SEWER, TAKEN FROM ENGINEERING DIAGRAMS
 - 42" — APPROXIMATE DIAMETER OF SEWER, TAKEN FROM ENGINEERING DIAGRAMS

DRAFT



Title: AREA 1	
WATER-TABLE ELEVATIONS AND EXTENT OF SEPARATE-PHASE PETROLEUM	
OCTOBER 23, 1991	
Prepared For: SUNNYSIDE YARD, QUEENS, NEW YORK	
ROUX	Compiled by: H.G. Date: 12/94
ROUX ASSOCIATES INC. Environmental Consulting & Management	Prepared by: G.M. Scale: SHOWN
File No: AM526B15	Project: 05526/451
PLATE 4	



ADDITIONAL DELINEATION SUMMARY

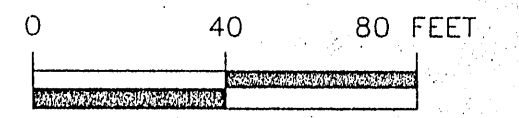
PHASE 1	PHASE 2	PHASE 3	PHASE 4
GM-2	PD-1	PD-24	PD-41
GM-2A	PD-4	PD-25	PD-42
GM-2B	PD-5	PD-26	PD-43
GM-2C	PD-6	PD-27	PD-44
GM-3	PD-7	PD-28	PD-45
GM-9	PD-9	PD-29	PD-46
GM-10	PD-10	PD-30	PD-47
GM-11	PD-11	PD-32	PD-48
GM-12	PD-12	PD-34	PD-53
	PD-13	PD-35	
	PD-14	PD-36	
	PD-15	PD-37	
	PD-16	PD-38	
	PD-17	PD-39	
	PD-18	PD-40	
	PD-19		
	PD-22		
	PD-23		

NOTE: BORINGS PD-2, PD-3, PD-8, PD-20, PD-21, PD-31, PD-33, PD-49, PD-50, PD-51 AND PD-52 WERE NOT PERFORMED.

- PD-5 COMPLETED HAND BORING-PETROLEUM ACCUMULATION DELINEATION
- GM-3 COMPLETED HAND BORING-GERAGHTY & MILLER WELL SCREENING
- MW-1 EXISTING MONITORING WELL LOCATION AND DESIGNATION (GERAGHTY & MILLER)
- MW-17 EXISTING MONITORING WELL LOCATION AND DESIGNATION (ROUX ASSOCIATES)
- MW-37 PHASE II INVESTIGATION PROPOSED SHALLOW MONITORING WELL LOCATION AND DESIGNATION
- MW-22 APPARENT THICKNESS OF SEPARATE-PHASE PETROLEUM IN FEET, MEASURED ON JUNE 4, 1992
- MW-40 PHASE II INVESTIGATION PROPOSED DEEP MONITORING WELL LOCATION AND DESIGNATION
- S-116 PHASE II INVESTIGATION COMPLETED SOIL BORING LOCATION AND DESIGNATION
- MW-4 FORMER WELL LOCATION AND DESIGNATION (DESTROYED)

EXPLANATION

- (N.D.) INDICATES NO SEPARATE-PHASE PETROLEUM WAS DETECTED ON WATER TABLE IN BORING
- (N.P.) INDICATES NO SEPARATE-PHASE PETROLEUM WAS DETECTED IN WELL
- SHEEN INDICATES PETROLEUM SHEEN WAS DETECTED ON WATER TABLE IN BORING
- PETROLEUM INDICATES SEPARATE-PHASE PETROLEUM WAS DETECTED
- 1.0 LINE OF EQUAL SEPARATE-PHASE PETROLEUM THICKNESS IN FEET, MEASURED ON JUNE 4, 1992
- PREVIOUSLY IDENTIFIED AREAS OF CONCERN
- MANHOLE LOCATION TAKEN FROM ENGINEERING DIAGRAMS
- APPROXIMATE LOCATION OF SEWER, TAKEN FROM ENGINEERING DIAGRAMS
- 42" APPROXIMATE DIAMETER OF SEWER, TAKEN FROM ENGINEERING DIAGRAMS
- W W APPROXIMATE LOCATION OF RETAINING WALL, TAKEN FROM ENGINEERING DIAGRAMS



Title: AREA 1 RESULTS OF ADDITIONAL DELINEATION SCREENING THROUGH PHASE 4

Prepared For: SUNNYSIDE YARD, QUEENS, NEW YORK

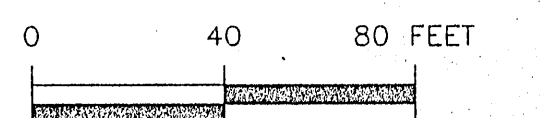
ROUX ROUX ASSOCIATES INC. Environmental Consulting & Management	Compiled by: H.G.	Date: 12/94	Page 5
	Prepared by: J.R.	Scale: SHOWN	
	Project Mgr: J.D.D.	Revision:	
	File No: AM526C18	Project: 05526/45Y	

NORTHERN BOULEVARD



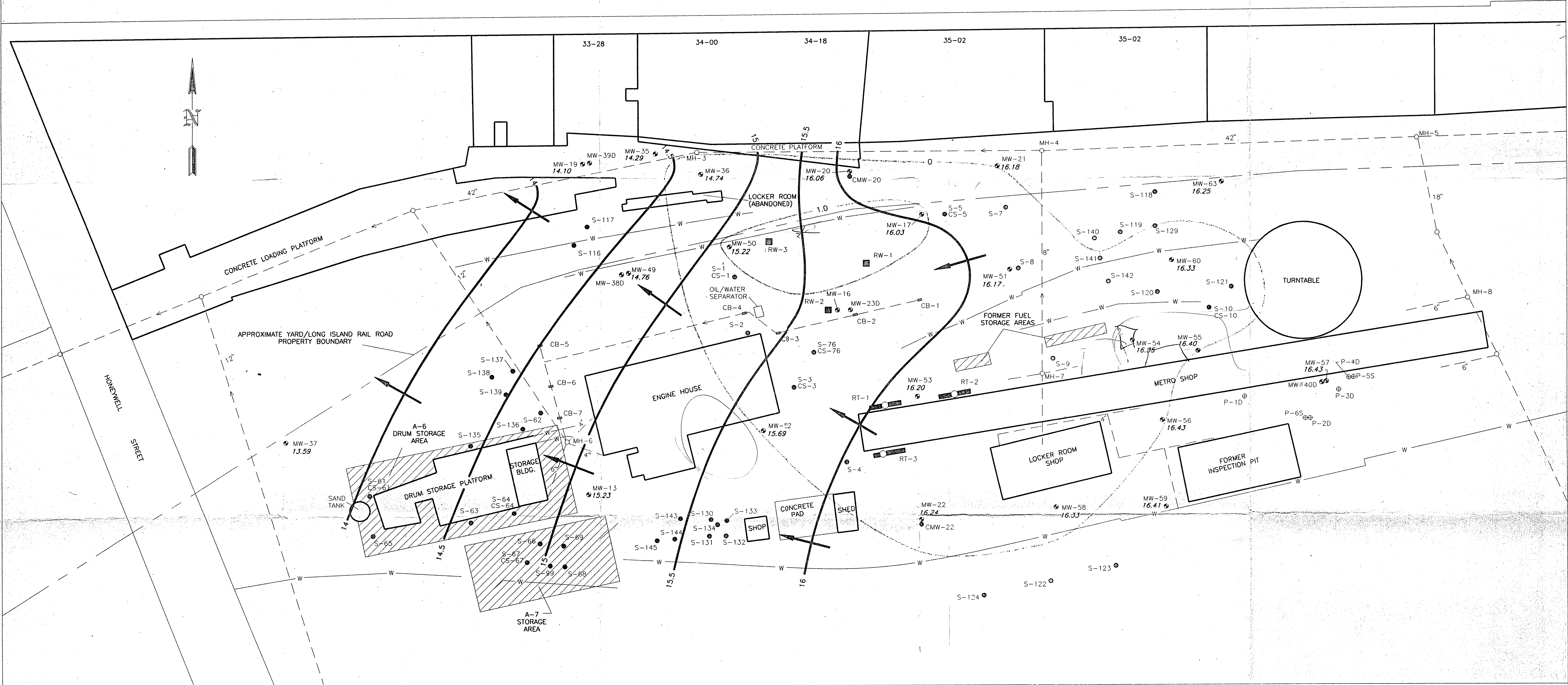
EXPLANATION

- MW-22 16.60 0.20 EXISTING MONITORING WELL LOCATION AND DESIGNATION
WATER-TABLE ELEVATION, IN FEET RELATIVE TO MEAN SEA LEVEL
ACTUAL THICKNESS OF SEPARATE-PHASE PETROLEUM, IN FEET
- P-1D EXISTING PIEZOMETER LOCATION AND DESIGNATION
- RW-2 EXISTING RECOVERY WELL (INTERIM REMEDIAL MEASURE) LOCATION AND DESIGNATION
- RT-1 RECOVERY TRENCH LOCATION AND DESIGNATION (INTERIM REMEDIAL MEASURE)
- S-1 CS-1 EXISTING SOIL BORING LOCATION AND DESIGNATION
- 42" APPROXIMATE LOCATION AND DIAMETER OF SEWER, TAKEN FROM ENGINEERING DIAGRAMS
- MH-6 SEWER MANHOLE LOCATION AND DESIGNATION
- CB-2 CATCH BASIN LOCATION AND DESIGNATION
- W APPROXIMATE LOCATION OF RETAINING WALL
- AREAS OF CONCERN
- 16 LINE OF EQUAL GROUND-WATER ELEVATION, DASHED WHERE INFERRED
- APPROXIMATE DIRECTION OF GROUND-WATER FLOW
- 1.0 LINE OF EQUAL SEPARATE-PHASE PETROLEUM THICKNESS (ACTUAL PETROLEUM THICKNESS, AS DETERMINED BY BAIL-DOWN TESTING)



Title: AREA 1			
WATER-TABLE ELEVATIONS AND EXTENT OF SEPARATE-PHASE PETROLEUM FEBRUARY 1 AND 2, 1994			
Prepared For: SUNNYSIDE YARD, QUEENS, NEW YORK			
ROUX ASSOCIATES, INC. Environmental Consulting & Management	Compiled by: J.Y. Prepared by: G.M. Project Mgr: J.D.D. File No: 05526005	Date: 12/94 Scale: SHOWN Revision: Project: 05526/45V	PLATE 6


NORTHERN BOULEVARD

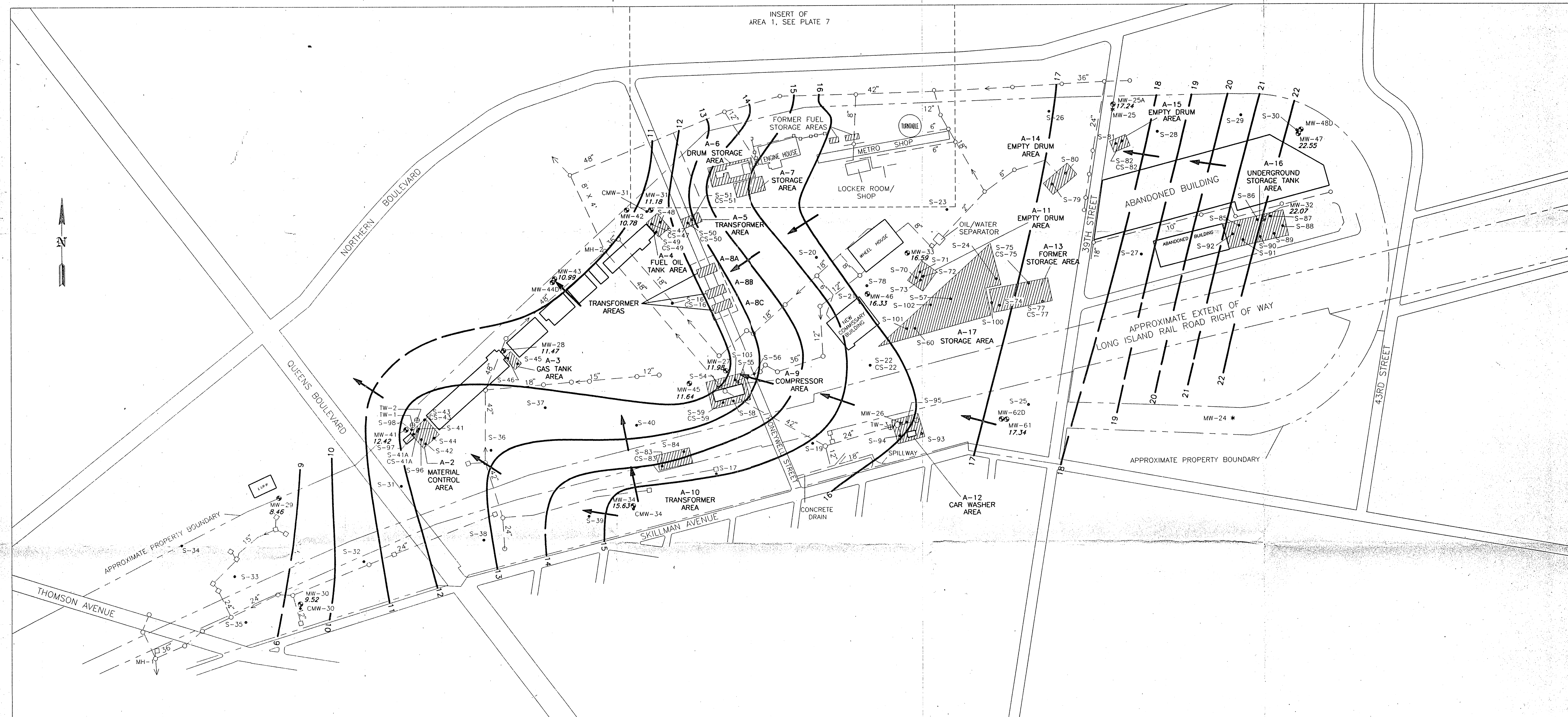


- EXPLANATION
- MW-22 16.24 ● EXISTING MONITORING WELL LOCATION AND DESIGNATION
 - 16.24 — WATER-TABLE ELEVATION, IN FEET RELATIVE TO MEAN SEA LEVEL
 - P-1D ⊕ EXISTING PIEZOMETER LOCATION AND DESIGNATION
 - RW-2 ■ EXISTING RECOVERY WELL (INTERIM REMEDIAL MEASURE) LOCATION AND DESIGNATION
 - RT-1 — EXISTING RECOVERY TRENCH LOCATION AND DESIGNATION (INTERIM REMEDIAL MEASURE)
 - S-1 ● EXISTING SOIL BORING LOCATION AND DESIGNATION
 - CS-1 ● EXISTING SOIL BORING LOCATION AND DESIGNATION
 - 42" — ○ APPROXIMATE LOCATION AND DIAMETER OF SEWER, TAKEN FROM ENGINEERING DIAGRAMS
 - MH-6 ○ SEWER MANHOLE LOCATION AND DESIGNATION
 - CB-2 ■ CATCH BASIN LOCATION AND DESIGNATION
 - W — APPROXIMATE LOCATION OF RETAINING WALL
 - ▨ AREAS OF CONCERN
 - 16 — LINE OF EQUAL GROUND-WATER ELEVATION, DASHED WHERE INFERRED
 - APPROXIMATE DIRECTION OF GROUND-WATER FLOW
 - 1.0 — LINE OF EQUAL SEPARATE-PHASE PETROLEUM THICKNESS (ACTUAL PETROLEUM THICKNESS, AS DETERMINED BY BAIL-DOWN TESTING)


0 40 80 FEET


Title:			
AREA 1			
WATER-TABLE ELEVATIONS AND EXTENT OF SEPARATE-PHASE PETROLEUM			
JUNE 14, 1994			
Prepared For:			
SUNNYSIDE YARD, QUEENS, NEW YORK			
Compiled by: J.Y.		Date: 12/94	PLATE
Prepared by: G.M.		Scale: SHOWN	7
Project Mgr: J.D.D.		Revision:	
File No. 05526002		Project 05526/457	


Title:			
WATER-TABLE ELEVATIONS FEBRUARY 1 AND 2, 1994			
Prepared For:			
SUNNYSIDE YARD, QUEENS, NEW YORK			
 ROUX ASSOCIATES INC. Environmental Consulting & Management	Compiled by: J.Y.	Date: 12/94	PLATE 8
	Prepared by: G.M.	Scale: SHOWN	
	Project Mgr: J.D.D.	Revision: 0	
	File No. 05526003	Project:05526/45Y	





EXPLANATION


-  MW-27
11.98 — EXISTING MONITORING WELL LOCATION AND DESIGNATION
 — WATER-TABLE ELEVATION, IN FEET RELATIVE TO MEAN SEA LEVEL


 S-83
 CS-83 • EXISTING SOIL BORING LOCATION AND DESIGNATION


 MW-26 * ABANDONED MONITORING WELL LOCATION AND DESIGNATION


 TW-3 ⊕ TEMPORARY WELLPOINT LOCATION AND DESIGNATION


 — — — — — O — — — — — O APPROXIMATE LOCATION AND DIAMETER OF SEWER, TAKEN FROM ENGINEERING DIAGRAMS

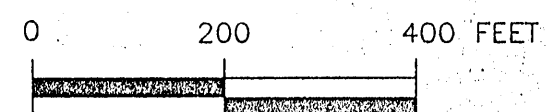
 MH-1 ○ MANHOLE LOCATION AND DESIGNATION

 □ CATCH BASIN LOCATION

 AREAS OF CONCERN

 16 ———— LINE OF EQUAL GROUND-WATER ELEVATION, DASHED WHERE INFERRED


 ← APPROXIMATE DIRECTION OF GROUND-WATER FLOW



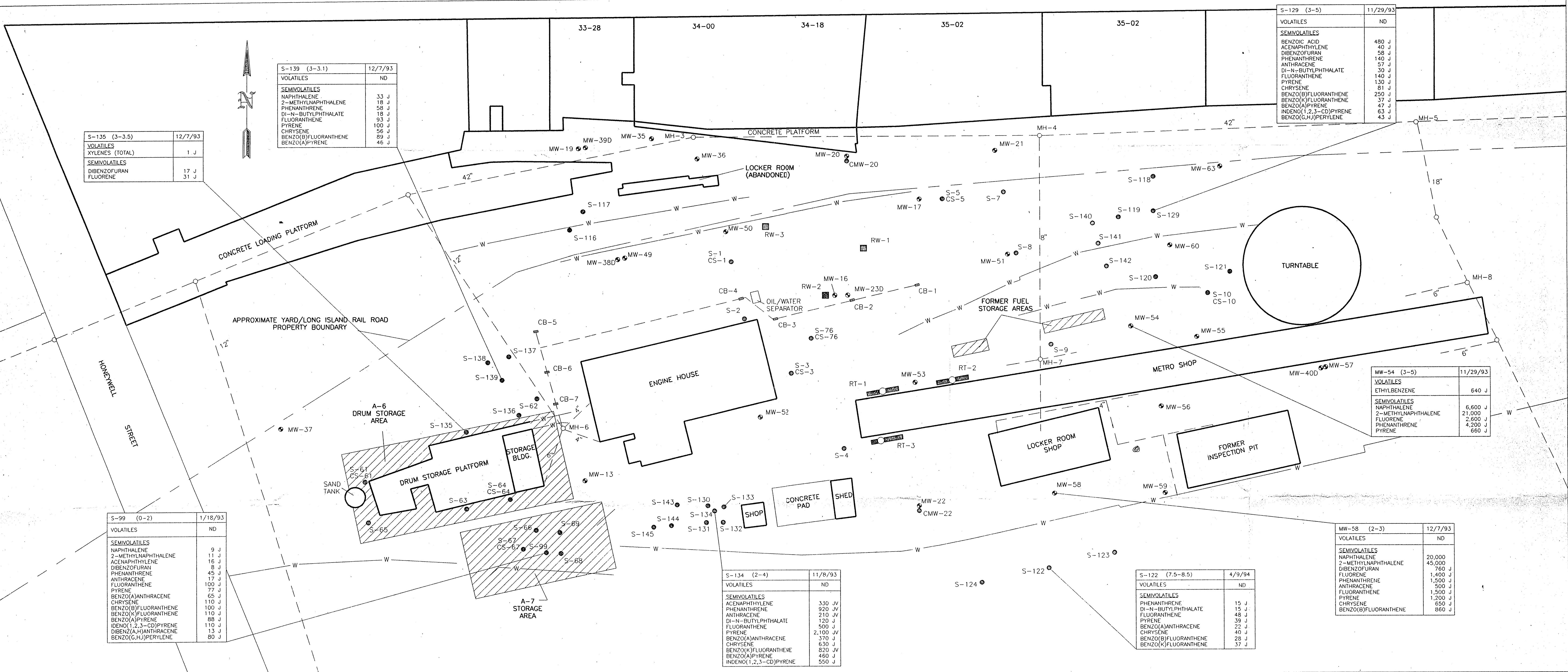
Title: _____

WATER-TABLE ELEVATIONS
JUNE 12, 1994

Prepared For: _____
SUNNYSIDE YARD, QUEENS, NEW YORK

 ROUX ASSOCIATES INC. Environmental Consulting & Management	Compiled by: J.Y.	Date: 12/94	PLATE
	Prepared by: G.M.	Scale: SHOWN	
	Project Mgr: J.D.D.	Revision: 0	9
	File No: 05526001	Project:05526/45	

NORTHERN BOULEVARD



EXPLANATION

BOREHOLE DESIGNATION		SAMPLE DATE	
S-99 (0-2)	1/18/93	VOLATILES	ND
SEMIVOLATILES			
NAPHTHALENE	9 J		
2-METHYLNAPHTHALENE	11 J		
ACENAPHTHYLENE	16 J		
DIBENZOFURAN	8 J		
PHENANTHRENE	45 J		
ANTHRACENE	17 J		
FLUORANTHENE	100 J		
PYRENE	77 J		
BENZO(A)ANTHRACENE	65 J		
CHRYSENE	110 J		
BENZO(B)FLUORANTHENE	100 J		
BENZO(K)FLUORANTHENE	110 J		
BENZO(A)PYRENE	88 J		
INDENO(1,2,3-CD)PYRENE	110 J		
DIBENZO(A,H)ANTHRACENE	13 J		
BENZO(G,H,I)PERYLENE	80 J		

- MW-22 ● EXISTING MONITORING WELL LOCATION AND DESIGNATION
- RW-2 ● EXISTING RECOVERY WELL LOCATION AND DESIGNATION (INTERIM REMEDIAL MEASURE)
- RT-1 ● RECOVERY TRENCH LOCATION AND DESIGNATION (INTERIM REMEDIAL MEASURE)
- S-1 ● EXISTING SOIL BORING LOCATION AND DESIGNATION
- CS-1 ● EXISTING SOIL BORING LOCATION AND DESIGNATION
- 42" ○ APPROXIMATE LOCATION AND DIAMETER OF SEWER, TAKEN FROM ENGINEERING DIAGRAMS
- MH-6 ○ SEWER MANHOLE LOCATION AND DESIGNATION
- CB-2 ● CATCH BASIN LOCATION AND DESIGNATION
- W — APPROXIMATE LOCATION OF RETAINING WALL
- ▨ AREAS OF CONCERN

0 40 80 FEET

Title: AREA 1
CONCENTRATIONS OF
VOLATILE ORGANIC COMPOUNDS AND
SEMIVOLATILE ORGANIC COMPOUNDS
DETECTED IN SOIL DURING PHASE II
REMEDIAL INVESTIGATION

Prepared For:
SUNNYSIDE YARD, QUEENS, NEW YORK

ROUX
ROUX ASSOCIATES INC.
Environmental Consulting
& Management

Compiled by: J.Y. Date: 12/94
Prepared by: G.M. Scale: SHOWN
Project Mgr: J.D.D. Revision:
File No: AM526C11 Project: 05526/45V

PLATE
11

NOTES: FOR EXPLANATION OF DATA QUALIFIERS REFER TO TABLES 8 AND 9
ND - NOT DETECTED
CONCENTRATIONS ARE IN MICROGRAMS PER KILOGRAM (ug/kg)

NORTHERN BOULEVARD

S-135 (3-3.5)	12/7/93
METALS	
ALUMINUM	1,910
ARSENIC	0.37 B
BARIUM	30.3 JV
CALCIUM	402 B
CHROMIUM	6.7
COBALT	1.8 B
COPPER	21.9
IRON	3,910
LEAD	5.4 JV
MAGNESIUM	957 B
MANGANESE	89.3
NICKEL	4.5 B
POTASSIUM	398 B
SELENIUM	0.43 JV
SODIUM	46.8 B
THALLIUM	0.21 JV
VANADIUM	5.9 B
ZINC	38.8

S-139 (3-3.1)	12/7/93
METALS	
ALUMINUM	4,430
ARSENIC	2.5
BARIUM	52.0 JV
CALCIUM	549 B
CHROMIUM	11.6
COBALT	3.4 B
COPPER	54.2
IRON	10,400
LEAD	27.1 JV
MAGNESIUM	1,710
MANGANESE	121
NICKEL	8.3 B
POTASSIUM	421 B
SELENIUM	0.49 JV
SODIUM	149 B
THALLIUM	0.24 JV
VANADIUM	14.9
ZINC	38.3

S-129 (3-5)	11/29/93
METALS	
ALUMINUM	2,570
ARSENIC	4.7
BARIUM	38.6 JV
CALCIUM	5,890
CHROMIUM	17.0
COBALT	4.3 B
COPPER	106
IRON	17,700
LEAD	46.9 JV
MAGNESIUM	3,980
MANGANESE	327
NICKEL	14.0
POTASSIUM	516 B
SELENIUM	0.46 JV
SODIUM	47.6 B
THALLIUM	0.23 JV
VANADIUM	15.2
ZINC	50.2

S-99 (0-2)	1/18/93
METALS	
ALUMINUM	9,370
ARSENIC	16.8
BARIUM	50.6
BERYLLIUM	0.22 B
CALCIUM	920 B
CHROMIUM	18.8
COBALT	7.5 B
COPPER	90.7 JV
IRON	21,300
LEAD	61.9
MAGNESIUM	2,180
MANGANESE	321
MERCURY	0.20
NICKEL	13.8
POTASSIUM	762 B
SELENIUM	0.40 JV
SODIUM	95.9 B
VANADIUM	30.6
ZINC	56.8

S-134 (2-4)	11/8/93
METALS	
ALUMINUM	6,270
ANTIMONY	4.9 JV
ARSENIC	8.9
BARIUM	83.5
CADMIUM	3.7
CALCIUM	2,060
CHROMIUM	66.3 JV
COBALT	5.7 B
COPPER	168
IRON	25,200
LEAD	591
MAGNESIUM	1,760
MANGANESE	206
MERCURY	0.37 JV
NICKEL	23.0
POTASSIUM	671 B
SELENIUM	1.3 BJV
SODIUM	244 B
VANADIUM	46.3
ZINC	223

S-122 (7.5-8.5)	4/9/94
METALS	
ALUMINUM	7,000
ARSENIC	1.6 B
BARIUM	65.9 B
BERYLLIUM	0.63 B
CADMIUM	0.72 B
CALCIUM	1,850
CHROMIUM	16.1
COBALT	6.6 B
COPPER	33.7
IRON	16,300
LEAD	12.1
MAGNESIUM	3,660
MANGANESE	624
NICKEL	13.2 B
POTASSIUM	1,240
SODIUM	103 B
VANADIUM	26.5
ZINC	66.0

MW-58 (2-3)	12/7/93
METALS	
ALUMINUM	4,050
ARSENIC	3.8 B
BARIUM	68.0 JV
BERYLLIUM	0.31 B
CADMIUM	2.5
CALCIUM	817 B
CHROMIUM	17.7
COBALT	6.4 B
COPPER	406
IRON	16,900
LEAD	529 JV
MAGNESIUM	1,390
MANGANESE	112
MERCURY	0.12
NICKEL	24.5
POTASSIUM	457 B
SELENIUM	0.47 JV
SODIUM	107 B
THALLIUM	0.24 JV
VANADIUM	32.1
ZINC	763

MW-54 (3-5)	11/29/83
METALS	
ALUMINUM	1,600
ARSENIC	1.1 B
BARIUM	34.4 JV
CHROMIUM	242 B
COBALT	5.1
COPPER	2.5 B
IRON	6,810
LEAD	18.5 JV
MAGNESIUM	802 B
MANGANESE	148
NICKEL	6.5 B
POTASSIUM	286 B
SELENIUM	0.43 JV
SODIUM	29.3 B
THALLIUM	0.22 JV
VANADIUM	10.7 B
ZINC	37.4

EXPLANATION

- MW-22 ● EXISTING MONITORING WELL LOCATION AND DESIGNATION
- RW-2 ■ EXISTING RECOVERY WELL LOCATION AND DESIGNATION (INTERIM REMEDIAL MEASURE)
- RT-1 ■ RECOVERY TRENCH LOCATION AND DESIGNATION (INTERIM REMEDIAL MEASURE)
- S-1 ● EXISTING SOIL BORING LOCATION AND DESIGNATION
- CS-1 ● EXISTING SOIL BORING LOCATION AND DESIGNATION
- 42" ○ APPROXIMATE LOCATION AND DIAMETER OF SEWER, TAKEN FROM ENGINEERING DIAGRAMS
- MH-6 ○ SEWER MANHOLE LOCATION AND DESIGNATION
- CB-2 ■ CATCH BASIN LOCATION AND DESIGNATION
- W ——— APPROXIMATE LOCATION OF RETAINING WALL
- ▨ AREAS OF CONCERN

0 40 80 FEET

Title:			
AREA 1			
CONCENTRATIONS OF METALS			
DETECTED IN SOIL DURING			
PHASE II REMEDIAL INVESTIGATION			
Prepared For:			
SUNNYSIDE YARD, QUEENS, NEW YORK			
ROUX	Compiled by: H.G.	Date: 9/94	PLATE
ROUX ASSOCIATES INC.	Prepared by: G.M.	Scale: SHOWN	
Environmental Consulting & Management	Project Mgr: J.D.D.	Revision:	12
File No: AMS26C13	Project: 05526/45Y		

NOTES: FOR EXPLANATION OF DATA QUALIFIERS, REFER TO TABLE 10
CONCENTRATIONS ARE IN MILLIGRAMS PER KILOGRAM (mg/kg)