

**GEI Consultants, Inc.**

# Weekly Log

**GEI Job No.** 2405115 – CE – Astoria CAMP Support**Client** Consolidated Edison, Inc.**Location** Con Ed Astoria Store**Activity** Near 21st**Dates:** 11.11.2024 to 11.15.2024**Personnel:****11.11.2024** GEI: Jose Romero**11.12.2024** GEI: Jose Romero**11.13.2024** GEI: Jose Romero**11.14.2024** GEI: Jose Romero**11.15.2024** GEI: Jose Romero**Tasks:**

GEI provided CAMP in support of construction activities as follows:

**11.11.2024** Provided coverage for West Sub station work, Job was Cancel due to Operator not showing up.**11.12.2024** Con Edison's team worked Adding Bollards to both lanes, creating wood boxes which were grouted and support for the bollards as their structure reached freezing point.**11.13.2024** Con Ed electrical team worked on Cutting Concrete excess from Bollards, removing wooden boxes, Grouting the inside of the bollards and Moving the Guard House to the preexisting Concrete Slab.**11.14.2024** Con Ed team worked on Clearing trenches then filled with cement. New squared were cut in asphalt for future removable bollards.**11.15.2024** Con Ed team worked on creating wooden boxes for grouting future bollards and clearing the cement trench from leafs**CAMP Observations:****11.11.2024** NA**11.12.2024** No VOCs, HCN, or particulate exceedances.**11.13.2024** No VOCs, HCN, or particulate exceedances.**11.14.2024** No VOCs, HCN, or particulate exceedances.**11.15.2024** No VOCs, HCN, or particulate exceedances.

---

**Environmental Observations:**

- 11.11.2024 No observations to report.
- 11.12.2024 No observations to report.
- 11.13.2024 No observations to report.
- 11.14.2024 No observations to report.
- 11.15.2024 No observations to report.

**Description of Waste Storage:**

- 11.11.2024 Asphalt cutting added in one roll off on site and Soil to 2<sup>nd</sup> container.
- 11.12.2024 Asphalt cutting added in one roll off on site and Soil to 2<sup>nd</sup> container.
- 11.13.2024 Asphalt cutting added in one roll off on site and Soil to 2<sup>nd</sup> container.
- 11.14.2024 Asphalt cutting added in one roll off on site and Soil to 2<sup>nd</sup> container.
- 11.15.2024 No observations to report.

**Imported Materials:**

Piping for the Bollards  
Cement truck  
Cement bags for grouting

**Exported Materials:**

None as of this week.

**Notes:**

Coordinated Matt to delivered camp stations TH after work at Astoria Con Ed. Rescheduled for Friday camp station drop off.









**Upcoming Work to be Performed:**



Tuesday 12<sup>th</sup> Start of day



Tuesday 12<sup>th</sup> Start of day



Tuesday 13<sup>th</sup>



Tuesday13th Grouting and support



Tuesday13th Grouting and support





Tuesday13th Grouting and support



Tuesday13th Grouting and support



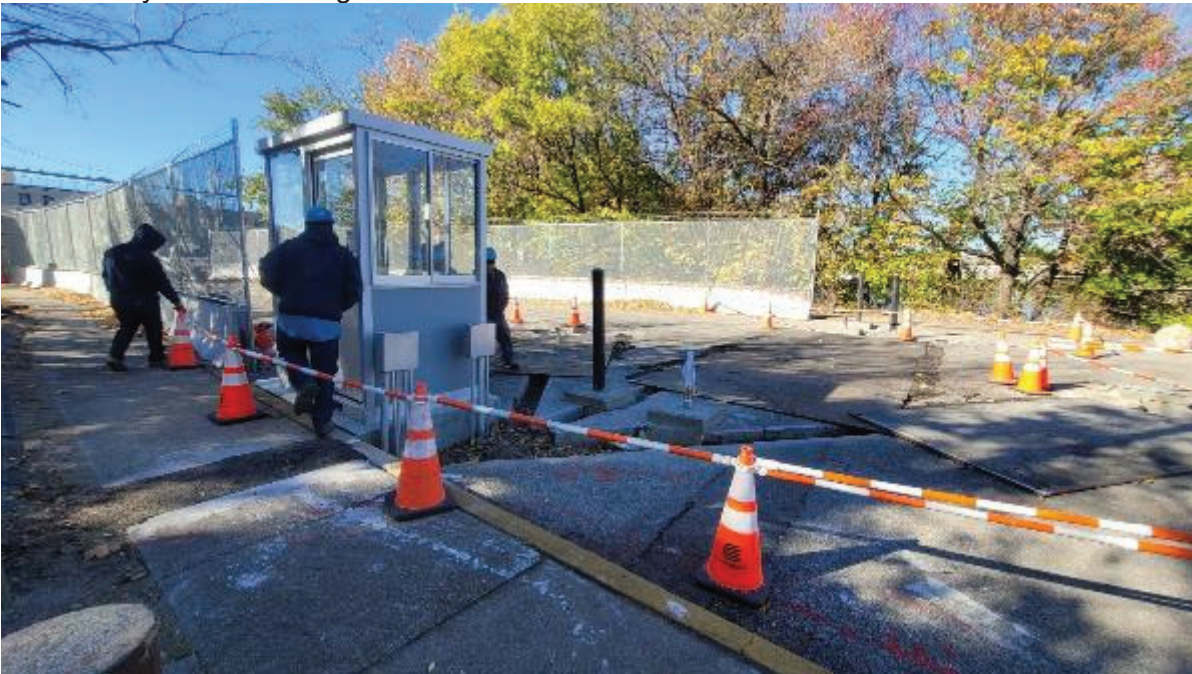
Tuesday13th Grouting and support



Tuesday13th Grouting and support



Wednesday 14<sup>th</sup> Removing wooden box frame



Wednesday 14<sup>th</sup> Moved guard house to concrete slab



Wednesday 14<sup>th</sup> Moved guard house to concrete slab zoomed out



Wednesday 14<sup>th</sup> Grouted the bollards and top off



Wednesday 14<sup>th</sup> Grouted the bollards and top off



Thursday 14<sup>th</sup> Trenches cleared and cement added



TH 14<sup>th</sup> truck removing metal plates and digging the new square for removable bollards.



Friday 15<sup>th</sup> New square cutting for future bollards



Friday 15<sup>th</sup> New square cutting for future bollards



Friday 15 cleared cement for future asphalt



Friday 15<sup>th</sup> Wooden frames for future grouting



Friday 15<sup>th</sup> Start of day





Friday 15<sup>th</sup> Start of day



Friday 15<sup>th</sup> Start of day