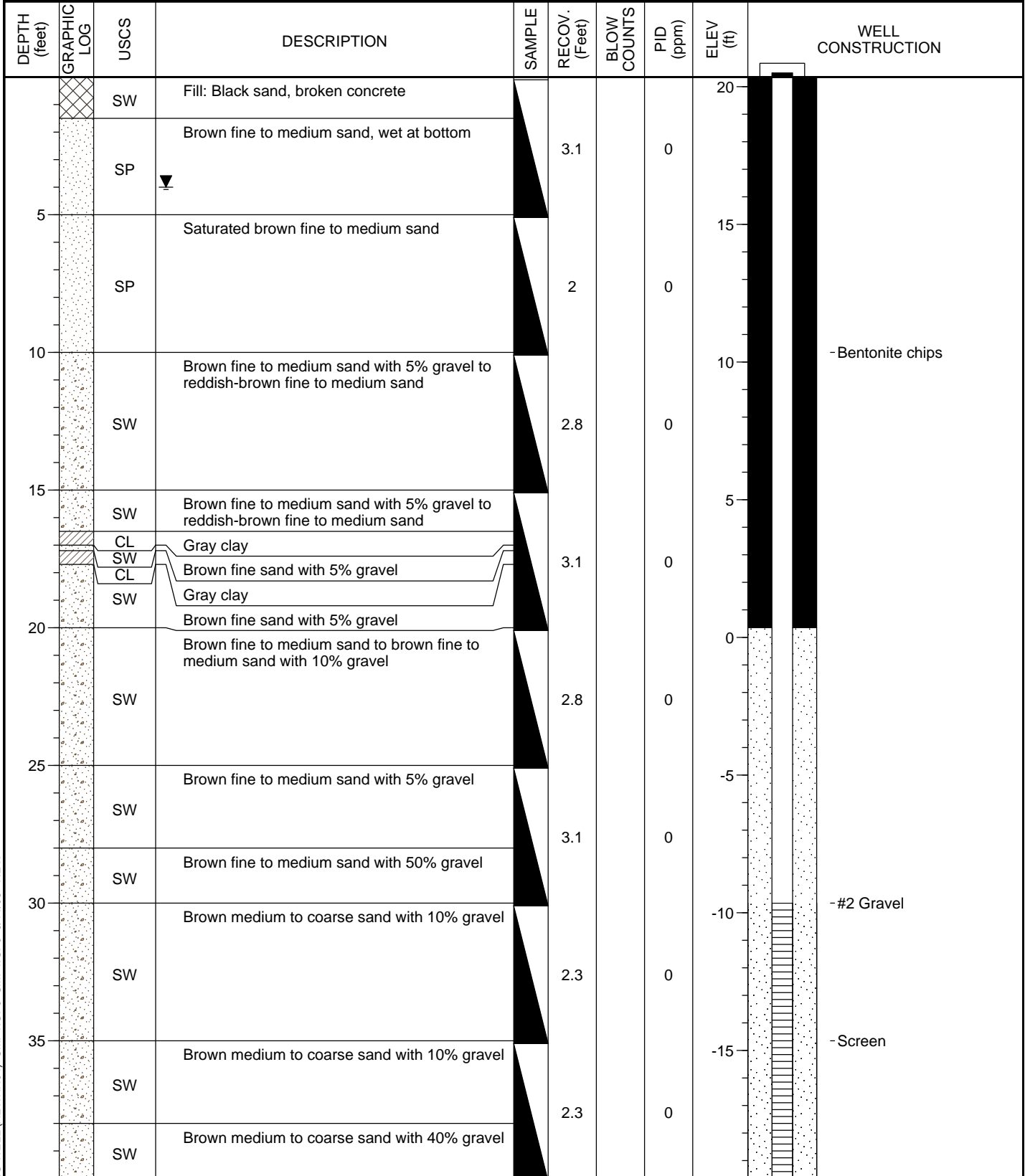


| | |
|--|--|
| PROJECT: Standard Motor Products, Inc. | MONITORING WELL NO: MW-14 DRAFT |
| LOCATION: Long Island City, New York | |
| STARTED: 1/18/08 COMPLETED: 1/22/08 | NORTHING: 213150.10 Feet EASTING: 1004807.33 Feet |
| DRILLING COMPANY: Zebra | ELEVATION: 20.35 Feet M.P. ELEV: |
| DRILLING EQUIPMENT: Geoprobe | WATER: 4 Feet TOTAL DEPTH: 40.0 Feet |
| DRILLING METHOD: Direct Push | LOGGED BY: Frank Robinson CHECKED BY: |
| SAMPLING METHOD: Macro-Core | HORIZONTAL DATUM: NAD83, COORD. SYS.: NY SP, LI Zone |
| SURFACE COMPLETION: Steel Flush-mount | VERTICAL DATUM: NAVD88 |



SMP MONITORING WELL (AEWINN04) SMP1.GPJ SMP1.GPJ 6/11/08 REV.

CDM
 Raritan Plaza I, Raritan Center
 Edison NJ 08818
 Telephone: 732.225.5000

DRAFT Monitoring Well Construction Log

PROJECT NO. 34433.46200



| | |
|--|--|
| PROJECT: Standard Motor Products, Inc. | MONITORING WELL NO: MW-14 DRAFT |
| LOCATION: Long Island City, New York | |
| STARTED: 1/22/08 COMPLETED: 1/22/08 | NORTHING: 213150.51 Feet EASTING: 1004810.91 Feet |
| DRILLING COMPANY: Zebra | ELEVATION: 20.33 Feet M.P. ELEV: |
| DRILLING EQUIPMENT: Geoprobe 6620 DT | WATER: 4 Feet TOTAL DEPTH: 20.0 Feet |
| DRILLING METHOD: Direct Push | LOGGED BY: Frank Robinson CHECKED BY: |
| SAMPLING METHOD: Macro-Core | HORIZONTAL DATUM: NAD83, COORD. SYS.: NY SP, LI Zone |
| SURFACE COMPLETION: Steel Flush-mount | VERTICAL DATUM: NAVD88 |

| DEPTH (feet) | GRAPHIC LOG | USCS | DESCRIPTION | SAMPLE | RECOV. (Feet) | BLOW COUNTS | PID (ppm) | ELEV (ft) | WELL CONSTRUCTION |
|--------------|-------------|------|-------------|--------|---------------|-------------|-----------|-----------|-------------------|
| 20 | | | | | | | | 20 | - Bentonite chips |
| 5 | | | | | | | | 15 | |
| 10 | | | | | | | | 10 | - #2 Gravel |
| 15 | | | | | | | | 5 | - Screen |
| 20 | | | | | | | | 0 | |

SMP MONITORING WELL (AEVINN04) SMP1.GPJ SMP1.GPJ 6/11/08 REV.

CDM
Raritan Plaza I, Raritan Center
Edison NJ 08818
Telephone: 732.225.5000

DRAFT Monitoring Well Construction Log

PROJECT NO. 34433.46200



| | |
|--|--|
| PROJECT: Standard Motor Products, Inc. | MONITORING WELL NO: MW-15 DRAFT |
| LOCATION: Long Island City, New York | |
| STARTED: 1/29/08 COMPLETED: 1/29/08 | NORTHING: 213204.08 Feet EASTING: 1004962.06 Feet |
| DRILLING COMPANY: Zebra | ELEVATION: 22.53 Feet M.P. ELEV: |
| DRILLING EQUIPMENT: Geoprobe 6620 DT | WATER: 7 Feet TOTAL DEPTH: 20.0 Feet |
| DRILLING METHOD: Direct Push | LOGGED BY: Frank Robinson CHECKED BY: |
| SAMPLING METHOD: Macro-Core | HORIZONTAL DATUM: NAD83, COORD. SYS.: NY SP, LI Zone |
| SURFACE COMPLETION: Steel Flush-mount | VERTICAL DATUM: NAVD88 |

| DEPTH (feet) | GRAPHIC LOG | USCS | DESCRIPTION | SAMPLE | RECOV. (Feet) | BLOW COUNTS | PID (ppm) | ELEV (ft) | WELL CONSTRUCTION |
|--------------|-------------|------|-------------|--------|---------------|-------------|-----------|-----------|-------------------|
| 0 | | | | | | | | 22.53 | - Bentonite chips |
| 5 | | | | | | | | 17.5 | |
| 10 | | | | | | | | 10.0 | - #2 Gravel |
| 15 | | | | | | | | 10.0 | - Screen |
| 20 | | | | | | | | 0.0 | |

SMP MONITORING WELL (AEVINN04) SMP1.GPJ SMP1.GPJ 6/11/08 REV.

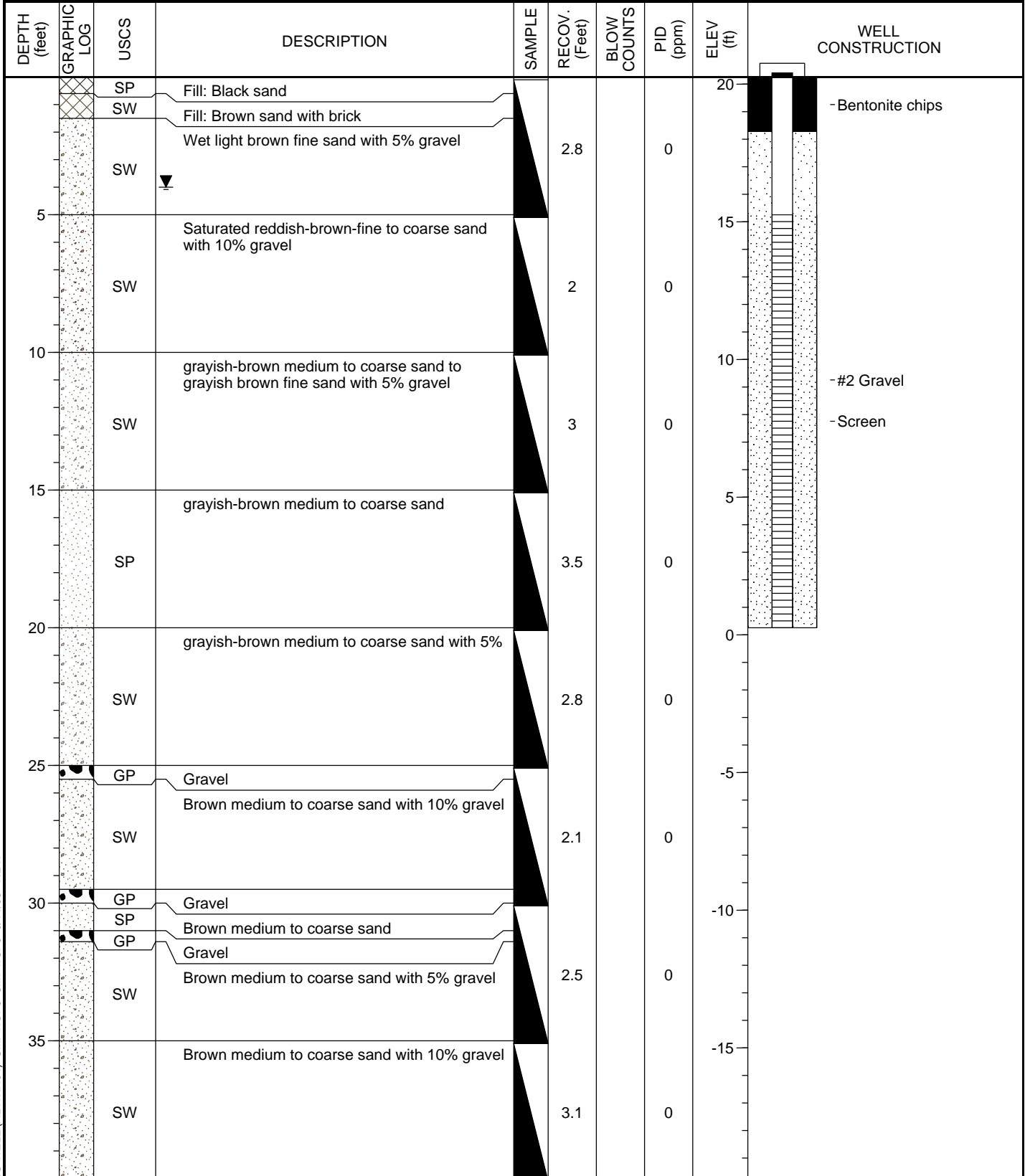
CDM
Raritan Plaza I, Raritan Center
Edison NJ 08818
Telephone: 732.225.5000

DRAFT Monitoring Well Construction Log

PROJECT NO. 34433.46200



| | |
|--|--|
| PROJECT: Standard Motor Products, Inc. | MONITORING WELL NO: MW-16 DRAFT |
| LOCATION: Long Island City, New York | |
| STARTED: 1/14/08 COMPLETED: 1/14/08 | NORTHING: 213153.54 Feet EASTING: 1004889.87 Feet |
| DRILLING COMPANY: Zebra | ELEVATION: 20.26 Feet M.P. ELEV: |
| DRILLING EQUIPMENT: Geoprobe | WATER: 4 Feet TOTAL DEPTH:40.0 Feet |
| DRILLING METHOD: Direct Push | LOGGED BY: Frank Robinson CHECKED BY: |
| SAMPLING METHOD: Macro-Core | HORIZONTAL DATUM: NAD83, COORD. SYS.: NY SP, LI Zone |
| SURFACE COMPLETION: Steel Flush-mount | VERTICAL DATUM: NAVD88 |



SMP MONITORING WELL (AEWINN04) SMP1.GPJ SMP1.GPJ 6/11/08 REV.

CDM
Raritan Plaza I, Raritan Center
Edison NJ 08818
Telephone: 732.225.5000

DRAFT Monitoring Well Construction Log

PROJECT NO. 34433.46200

