

(Fact Sheet Begins Next)

Act Now to Continue Receiving Information About This Site!

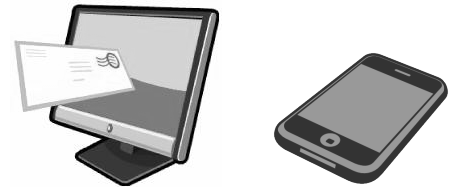
DEC's Division of Environmental Remediation (DER) now distributes information about contaminated sites *electronically by email*.

If you would like to continue to receive information about the contaminated site featured in this fact sheet:

You must sign up for the DER email listserv:

www.dec.ny.gov/chemical/61092.html

DER cannot register your email address - only the email address owner can do so. If you already have signed up for the listserv for the county in which the site is located, you need do nothing.



Why You Should Go “Paperless”:

- ☒ Get site information faster and share it easily;
- ☒ Receive information about all sites in a chosen county - read what you want, delete the rest;
- ☒ It helps the environment and stretches your tax dollars.

If “paperless” is not an option for you, call or write to the DER project manager identified in this fact sheet. Indicate that you need to receive paper copies of fact sheets through the Postal Service. Include the site name in your correspondence. The option to receive paper is available to individuals only. Groups, organizations, businesses, and government entities are assumed to have email access.



Department of
Environmental
Conservation

Where to Find Information

Access project documents through the DECinfo Locator and at these locations:

<https://www.dec.ny.gov/data/DecDocs/241210/> and
<https://www.dec.ny.gov/data/DecDocs/V00391/>

Queens Community Board 14

1931 Mott Avenue, Room 311 Far
Rockaway, NY 11691
(718) 471-7300

Queens Library – Far Rockaway Branch

1637 Central Avenue
Far Rockaway, NY 11691
(718) 327-2549

Who to Contact:

Comments and questions are welcome
and should be directed as follows:

Project-Related Questions

Tara Rutland, Project Manager
NYSDEC
625 Broadway
Albany, NY 12233-7015
(518) 402-9632
tara.rutland@dec.ny.gov

Project-Related Health Questions

Renata E. Ockerby, Project Manager,
NYSDOH
Bureau of Environmental Exposure
Investigation
ESP Corning Tower, Rm 1787
Albany, NY 12237
(518) 402-7860
beci@health.ny.gov

For more information about New
York's Superfund Program, visit:
www.dec.ny.gov/chemical/8439.html

FACT SHEET

State Superfund Program

LIRR Far Rockaway
(Inwood) Substation
Redfern Avenue
Far Rockaway, NY 11691

May 2025

SITE No. 241210
NYSDEC REGION 2

Investigation to Resume at State Superfund Site

The Long Island Rail Road (“remedial party”) will soon begin a supplemental environmental study at the LIRR Far Rockaway (Inwood) Substation site (“site”) located at Redfern Avenue, Far Rockaway, NY. Please see the map for the site location.

Investigation Work Plan: The investigation work plan, called a “Supplemental Remedial Investigation Work Plan (SRIWP),” was submitted to NYSDEC under New York’s State Superfund Program. The site is listed as a Class “A” site. A Class A site is assigned to a non-registry site where work is underway and not yet complete. NYSDEC and the New York State Department of Health (NYSDOH) will oversee the investigation.

- Access the SRIWP and other project documents online through the DECinfo Locator: <https://www.dec.ny.gov/data/DecDocs/241210/> and <https://www.dec.ny.gov/data/DecDocs/V00391/>
- Documents also are available at the locations identified at left under “Where to Find Information.”

Highlights of the Site Investigation: The investigation will define the extent of the soil contamination identified on-site and off-site during previous investigations.

Past investigations in the area have determined that mercury contamination exists in subsurface soil at the site. Mercury is a contaminant often associated with mercury rectifiers, which are historic railroad devices used to power LIRR locomotives and electric passenger car fleets.

Key components of the investigation work include:

- Installing and sampling soil borings to complete delineation of the nature and extent of soil contamination.

STATE SUPERFUND PROGRAM

Next Steps: When the investigation is completed, a Remedial Investigation Report summarizing the results will be submitted to NYSDEC. NYSDEC and NYSDOH will review the report, make any necessary revisions and when appropriate, approve the report.

After the investigation, a proposed cleanup plan, called a “Draft Remedial Work Plan” will be developed by the remedial party. The cleanup plan will include an alternatives analysis to evaluate potential ways to clean up contamination related to the site. The information collected during the site investigation may also support a recommendation that no action or no further action is needed to address site-related contamination. The goal of the cleanup plan is to ensure the protection of public health and the environment.

NYSDEC will announce the availability of the draft cleanup plan in a future fact sheet and will present it to the public for its review and comment during a 45-day comment period.

NYSDEC will keep the public informed throughout the investigation and cleanup of the site.

Site Description: The substation consists of an approximately 625 square foot one-story brick building with an adjacent 2,100 square foot transformer yard.

The LIRR built, owned, and operated the substations from the early 1930s. Until the 1980s, the substations housed mercury rectifiers, devices used to power LIRR locomotives and electric passenger car fleets. During the 1980s, the mercury rectifiers were removed from the substations and replaced with non-mercury containing solid state equipment. However, past work practices employed during the operation and maintenance of the mercury rectifiers may have affected the site and surrounding environment.

Additional site details, including environmental and health assessment summaries, are available on NYSDEC's Environmental Site Remediation Database (by entering the site ID, 241210) at:

<https://www.dec.ny.gov/cfm/externalapps/derexternal/index.cfm?pageid=3>

State Superfund Program: New York's State Superfund Program (SSF) identifies and characterizes suspected inactive hazardous waste disposal sites. Sites that pose a significant threat to public health and/or the environment go through a process of investigation, evaluation, cleanup and monitoring.

NYSDEC attempts to identify parties responsible for site contamination before committing State funds for investigation and cleanup.

For more information about the SSF, visit:

<https://www.dec.ny.gov/chemical/8439.html>

We encourage you to share this fact sheet with neighbors and tenants, and/or post this fact sheet in a prominent area of your building for others to see.

Stay Informed With DEC Delivers

Sign up to receive site updates by email:

www.dec.ny.gov/chemical/61092.html

Note: Please disregard if you already have signed up and received this fact sheet electronically.

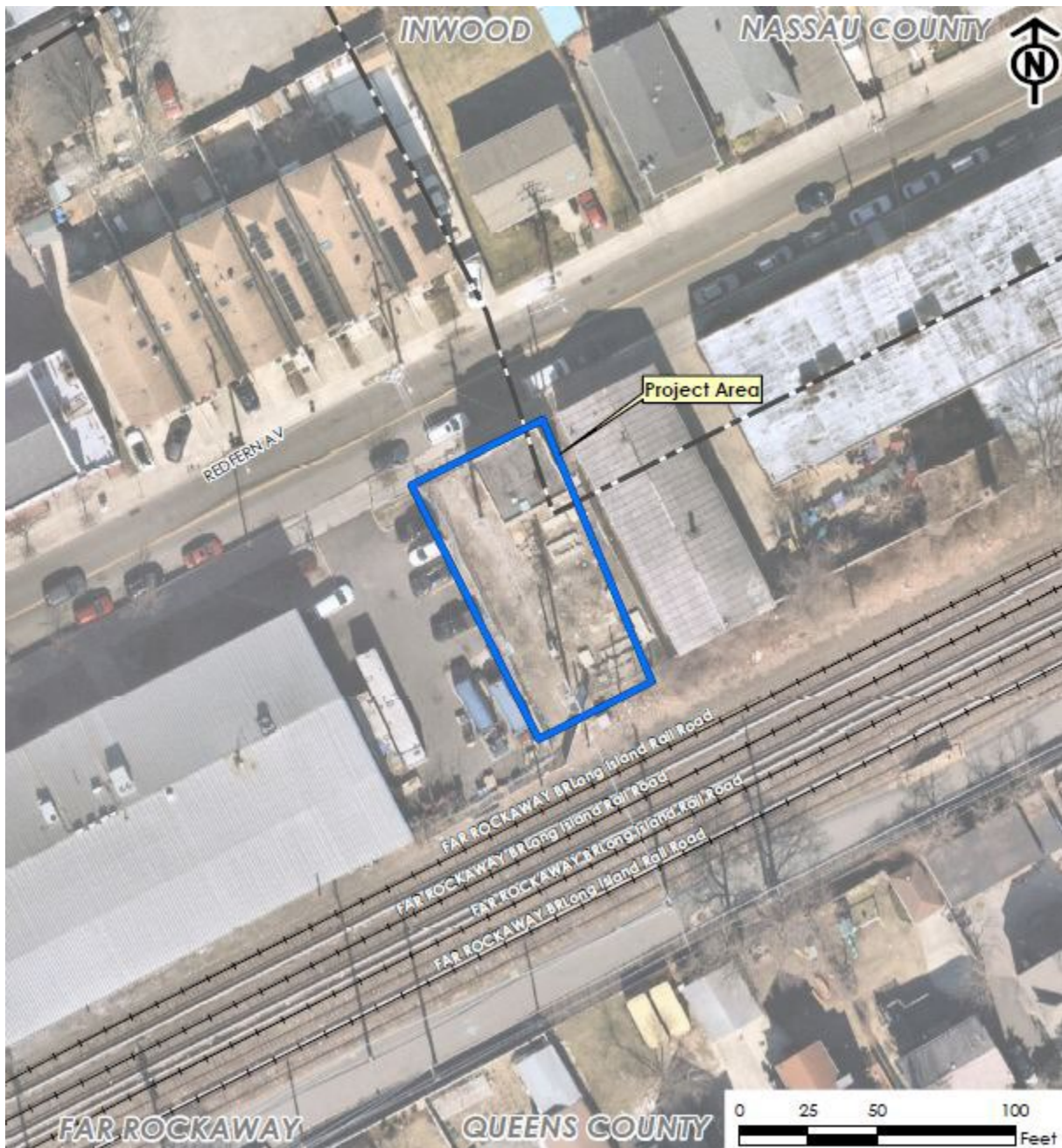
DECinfo Locator

Interactive map to access DEC documents and public data about the environmental quality of specific sites:

<https://www.dec.ny.gov/pubs/109457.html>

STATE SUPERFUND PROGRAM

Site Location





Translation Available. Don't see your language? Ask!

English	To have this document translated into a language you can understand, contact the person below. There is no charge for the translation.
Español Spanish	Si necesita la traducción de este documento a un idioma que pueda entender, comuníquese con la persona indicada abajo. La traducción es gratis.
简体字 Simplified Chinese	如需將此文件翻譯成您能理解的語言版本，請聯絡下方人員。本次翻譯不收取費用。
Русский Russian	Чтобы получить перевод этого документа на понятный вам язык, свяжитесь с представителем, данные которого указаны ниже. Плата за эту услугу не взимается.
אידיש Yiddish	צו האבן די דאקומענט איבערגעטייטשט אין א שפראך וואס איר קענט פארשטיין, פארבינדט זיך מיט די פערזאן אונטן. די איבערטייטשונג איז פריי פון אפצאל.
বাঙালি Bengali	এই নথিটি আপনি বুঝতে পারেন এমন একটি ভাষায় অনুবাদ করতে, নিম্নলিখিত ব্যক্তির সাথে যোগাযোগ করুন। অনুবাদের জন্য কোন চার্জ দিতে হবে না।
한국어 Korean	이 언어를 본인이 이해할 수 있는 언어로 받아보려면 아래 담당자에게 문의하십시오. 번역료는 없습니다.
Kreyòl Ayisyen Haitian Creole	Pou yo ka tradwi dokiman sa nan yon lang ou ka konprann, kontakte moun ki anba a. Ou p'ap peye anyen pou tradiksyon an.
Italiano Italian	Per ottenere la traduzione di questo documento in un'altra lingua, contatti la persona indicata qui di seguito. La traduzione è gratuita.
العربية Arabic	لترجمة هذا المستند إلى لغة يمكنك فهمها، تواصل مع الشخص أدناه. لا يتم تطبيق رسوم مقابل الترجمة.
Języki Polski Polish	Aby uzyskać tłumaczenie tego dokumentu na język, który jest dla Ciebie zrozumiały, skontaktuj się z poniższą osobą. Za tłumaczenie nie jest pobierana żadna opłata.

Contact: Tara Rutland (518) 402-9632 tara.rutland@dec.ny.gov