

Project	Former Port Mobil Terminal	Report No.	29
NYSDEC Site	#243016	Date	2/3/2025
Location	4101 Arthur Kill Road, Staten Island, New York	File No.	0208988
Client	NP Staten Island Industrial, LLC	Temperature	29-50°F
		Wind Direction	SW to NE up to 9 mph
Weather	Partly Sunny	Personnel on Site	C. Lorthioir, O. Hennigan
Humidity	70%	Time on Site	6:30 am to 5:00 pm

Daily Observations:

- Haley & Aldrich field personnel performed monthly synoptic well gauging.
- EA Engineering personnel on-site to oversee work conducted by Haley & Aldrich of New York.
- Product was identified in monitoring wells MH-1R, MW-100, MW-107, MW-111, MW-117, RFI-7R, RFI-8R, RW-AST12A, RA-AST12B, RW-2 and RW-6.
- Sock was 100% saturated in RFI-7R. The saturated sock was replaced.
- Socks were 25% to 50% saturated in I-5, MW-102, RW-8, RW-10 and TMP-1.
- Activities for coming week: perform quarterly groundwater sampling.

Site Photographs:

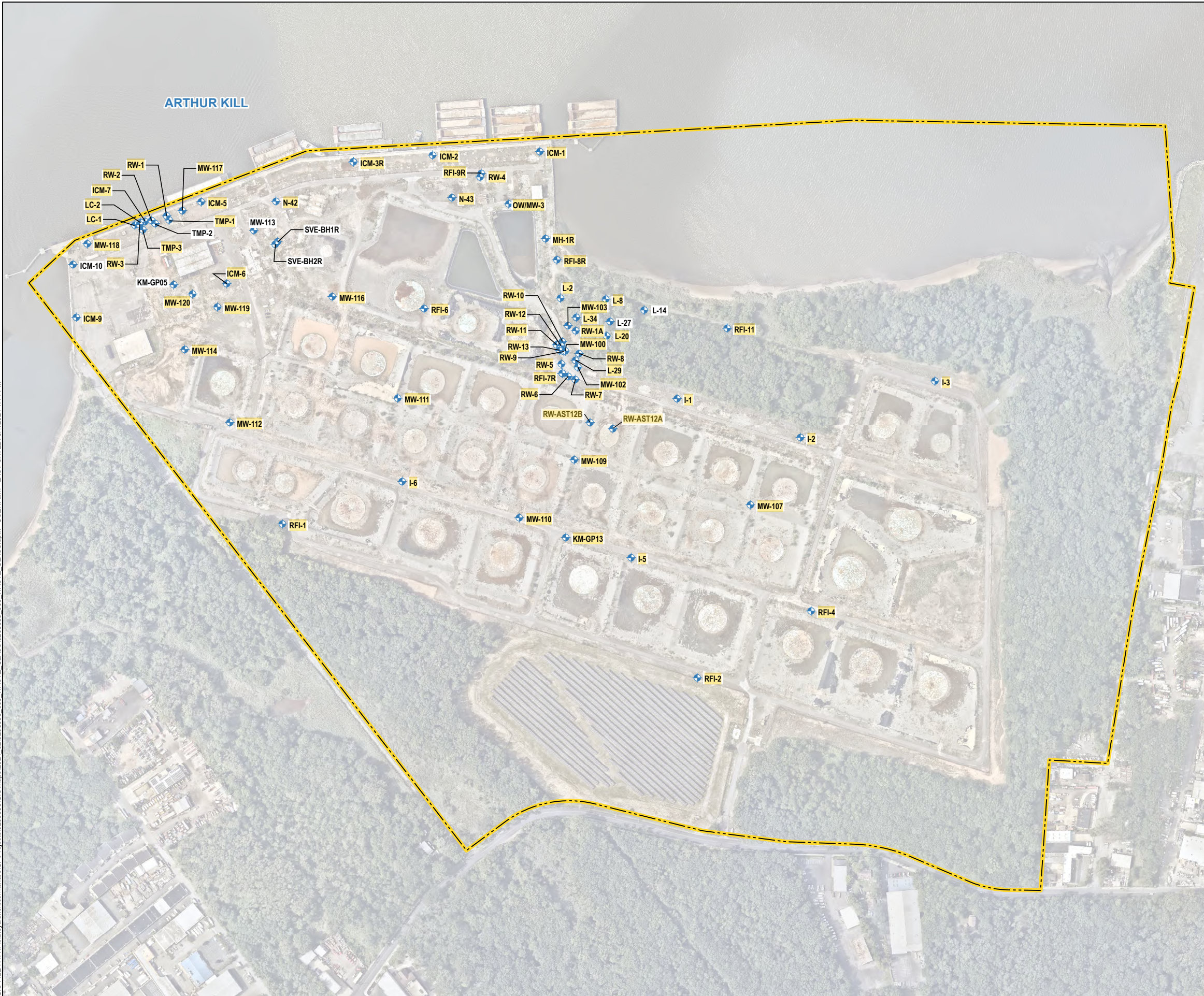


Photo 1: View of L-23 well gauging activities, facing north.





Photo 2: Check of sock in TMP-1 prior to gauging.

GIS FILE PATH: \\haleyaldrich.com\share\CF\Projects\2024\GIS\Map\2024_02\0208688_000_WASTE_CLASS\20240814_1441 PM

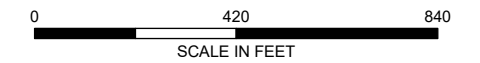


LEGEND

-  MONITORING WELL
-  PROJECT SITE BOUNDARY

NOTES

1. ALL LOCATIONS AND DIMENSIONS ARE APPROXIMATE.
2. ASSESSOR PARCEL DATA SOURCE: RICHMOND COUNTY
3. AERIAL IMAGERY SOURCE: NEARMAP, 14 SEPTEMBER 2023
4. HIGHLIGHTED MONITORING WELLS GAUGED ON 13 AUGUST 2024



FORMER PORT MOBIL TERMINAL
STATEN ISLAND, NEW YORK

MONITORING WELL LOCATION PLAN

FEBRUARY 2025

FIGURE 1



Q1 Synoptic Water Level Measurement Log February 2025

PROJECT	Former Port Mobil Terminal Site
LOCATION	4101 Arthur Kill Rd, Staten Island, New York
CLIENT	NorthPoint Development LLC
H&A FILE NO.	208988
PROJECT MANAGER	S. Bell
FIELD REP.	C. Lorthioir, O. Hennigan
GAUGING DATE	2/3/2025
WEATHER	Partly Sunny, 29-50°F

MONITORING WELL ID	TIME	DEPTH TO WATER (FT BELOW TOC)	DEPTH TO BOTTOM (FT BELOW TOC)	DEPTH TO PRODUCT (FT BELOW TOC)	PID (PPM)	NOTES	Sample Parameters
I-1	1440	7.13	21.67		94.4		
I-2	1442	7.22	20.09		12.5		
I-3	1447	6.34	22.83		35.9		
I-5	1527	18.61	28.97	12.71	4.7	Sock @ 25% saturation, not replaced	
I-6	1537	29.1	40.13		22.6	Mostly dry	
ICM-1	1115	6.34	16.81		1.6		BTEX and MTBE
ICM-2	1050	6.7	6.95		0		
ICM-3R	1042	7.59	15.46		0		
ICM-5	959	7.67	14.95		0		
ICM-6	1613	6.44	17.57		92.3		
ICM-7	943	7.99	13.19		0		
ICM-9	1640	2.85	12.37		22.5		
ICM-10						Abandoned during IRM 1 activities	
KM-GP05						No access	
KM-GP13	1531	13.49	23.91		9.1		
LC-1	932	6.35	11.01		20.1		
LC-2	934	8.52	14.08		0		
L-2	1123	5.98	11.94		0		
L-8	1457	3.29	10.21		4.7		
L-14						Lost	
L-20(1)	1146	3.85	9.97		0		
L-27	1148	2.55	10.03		0		BTEX and MTBE
L-29	1157	10.05	15.02		0		
L-34	1135	9.21	13.91		0		BTEX and MTBE
MH-1R	1127	6.35	15.94	6.34	0		
MW-100	1405	12.13	21.22	11.75	149		
MW-102	1205	6.53	19.45		0	Sock less than 50% saturated	
MW-103	1140	6.65	17.69		155.9		BTEX and MTBE
MW-107	1520	21.64	28.65	20.63	5.9	Sheen	
MW-109	1431	12.3	21.02		155.2		
MW-110	1534	7.65	23.6		0		
MW-111	1544	31.85	39.25	31.2	154.9		
MW-112	1624		9.98		0	Dry	
MW-113						No access	BTEX and MTBE
MW-114	1554	4.82	23.89		0		
MW-116	1609	6.58	24.43		14.2		
MW-117	957	7.15	14.14	7.01	0		BTEX and MTBE



Q1 Synoptic Water Level Measurement Log February 2025

PROJECT	Former Port Mobil Terminal Site						
LOCATION	4101 Arthur Kill Rd, Staten Island, New York						
CLIENT	NorthPoint Development LLC						
H&A FILE NO.	208988						
PROJECT MANAGER	S. Bell						
FIELD REP.	C. Lorthioir, O. Hennigan						
GAUGING DATE	2/3/2025						
WEATHER	Partly Sunny, 29-50°F						

Well ID	Depth (ft)	Water Level (ft)	Water Level (ft)	Water Level (ft)	Water Level (ft)	Notes	Contaminants
MW-118	925	10.21	17.34		0.9		BTEX and MTBE
MW-119	1618	10.3	16.11		132.1		BTEX and MTBE
MW-120	1620	3.19	15.33		76.1		BTEX and MTBE
N-42	1035	7.7	19.72		16.4		BTEX and MTBE
N-43	1101	4.97	18.08		0		
OW/MW-3	1111	3.19	10.34		0		
RFI-1	1557	8.3	15.74		0		
RFI-2	1601	14.2	21.49		2		
RFI-4	1514	6.11	12.04		0.8		
RFI-6	1634	7.96	15.78		3		
RFI-7R	1224	15.91	22.04	13.69	293.8	Sock 100% saturated, replaced	BTEX and MTBE
RFI-8R	1125	0	4.03	13.24			
RFI-9R	1107	1.93	3.82		0		
RW-AST12A	1419	16.9	23.82	10.95	504.1		
RW-AST12B	1425	20.2	23.25	11.25	140.4		
RFI-11	1505	1.93	10.22		18.6	Sheen observed	
RW-1	955	6.33	7.99		0		
RW-1A	1152	6.04	21.61		0		BTEX and MTBE
RW-2	950	7.24	8.42	6.69	0		
RW-3	945	6.45	7.76		0	Sheen observed	
RW-4	1056	5.25	8.21		0		
RW-5	1231	11.58	15.55		3.8	Sheen observed	
RW-6	1213	11.96	21.9	11.95	54.8		
RW-7	1210	9.99	19.43		51.7		
RW-8	1155	10.55	20.41		33.2	Sock less than 50% saturated	
RW-9	1240	10.29	16.01		227.6		
RW-10	1246	10.11	16.42		131.2	Sock less than 50% saturated	
RW-11	1248	11.06	17.72		136		
RW-12	1243	10.33	18.44		129.2		
RW-13	1234	10.69	18.37		232.6		
SVE-BH1R						Abandoned during IRM 1 activities	
SVE-BH2R						Abandoned during IRM 1 activities	
TMP-1	1007	7.39	15.17		19.3	Sock less than 25% saturated, not replaced.	
TMP-2						Abandoned during IRM 1 activities	
TMP-3	940	6.93	15.21		0		
Tide	1006	6.27					

Comments:
 FT BELOW TOC - Feet Below Top of Casing
 PID - Photoionization Detector
 PPM - parts per million
 BTEX - Benzene, Toluene, Ethylbenzene, Xylenes
 MTBE - Methyl tert butyl Ether