



FACT SHEET

State Superfund Program

Receive Site Fact Sheets by *Email*. See "For More Information" to Learn How.

Site Name: Amenia Town Landfill
DEC Site #: 314006
Site Address: 4541 Route 22
AMENIA, NY 12501

March 2012

Cleanup Action to Begin at State Superfund Site

Action is about to begin that will address the contamination related to Amenia Town Landfill ("site") located at 4541 Route 22, AMENIA, Dutchess County under New York State's State Superfund Program. Please see the map for the site location.

The site is listed as a Class "2" site in the State Registry of Inactive Hazardous Waste Sites (list of State Superfund sites). A Class 2 site represents a significant threat to public health or the environment; action is required.

State Superfund Program: New York's State Superfund Program (SSF) identifies and characterizes suspected inactive hazardous waste disposal sites. Sites that pose a significant threat to public health and/or the environment go through a process of investigation, evaluation, cleanup and monitoring.

NYSDEC attempts to identify parties responsible for site contamination and require cleanup before committing State funds.

For more information about the SSF, visit:
<http://www.dec.ny.gov/chemical/8439.html>

Documents related to the cleanup of this site can be found at the location(s) identified below under "Where to Find Information." The cleanup activities will be performed by the responsible party with oversight provided by New York State Department of Environmental Conservation (NYSDEC or Department).

Highlights of the Upcoming Cleanup Activities

The goal of the cleanup action for the site is to achieve cleanup levels that protect public health and the environment. The cleanup action for the site includes:

excavation of PCB- and heavy metal-contaminated sediment from the adjacent wetland and placement of these sediments on the landfill below the low-permeability cap; restoration of the excavated areas of the wetland; construction of a low-permeability cap meeting the substantive requirements of 6 NYCRR Part 360 regulations for Solid Waste Management Facilities; development of a Site Management Plan (SMP) to address residual contamination, land use restrictions, and long-term operation, monitoring and maintenance of the cap/site; and imposition of an environmental easement with periodic certification of the institutional and engineering controls (IC/ECs).

Next Steps

After completion of the cleanup activities, the responsible party will prepare a Final Engineering

Report. The Final Engineering Report will describe the cleanup activities completed and certify that cleanup requirements have been achieved or will be achieved.

The New York State Department of Environmental Conservation (NYSDEC) will keep the public informed throughout the cleanup of the site.

Background

The Amenia Town Landfill Site is located on the west side of Route 22 about 1.5 miles south of the intersection with Route 44 in rural Dutchess County. The property consists of approximately 27 acres, of which the landfill covers approximately 9 acres.

The site is heavily vegetated with grass and scrub trees. An abandoned helicopter pad and a former propane storage area are located on the northern end of the site. West Pond, a wetland, borders the site on the west and north. A partially-wooded hill lies to the south.

The site has been privately owned by successive owners since landfilling operations began in the late 1940s. Municipal and industrial wastes were disposed of in the landfill until closure in 1976. In 1998, the NYSDEC identified a drum disposal area at the south end of the site with deteriorated and leaking drums. An emergency drum removal was conducted by the USEPA at the request of the NYSDEC.

The native material under the landfill consists of sand, gravel, silt and glacial till, under which lies a dolomitic marble. Bedrock was encountered at depths from 20-70 feet below ground surface (bgs). Shallow groundwater beneath the site appears to originate primarily from surface water infiltrating the west side of the landfill and from aquifer recharge due to precipitation infiltration; this is not likely an important hydraulic pathway since the majority of the rainfall runs off as overland flow due to steep slopes. Groundwater does not occur in the overburden at the south end of the site where soil thickness is on the order of 10 feet or less. Groundwater flows east from the site and ultimately discharges to surface water.

Additional site details, including environmental and health assessment summaries, are available on NYSDEC's website at:

<http://www.dec.ny.gov/cfm/xtapps/derexternal/haz/details.cfm?pageid=3&progno=314006>

FOR MORE INFORMATION

Where to Find Information

Project documents are available at the following location(s) to help the public stay informed.

Amenia Free Library
Attn: Miriam Devine
3309 Route 443
Amenia, NY 12501
phone: 845-373-8273

Sharon Town Hall
63 Main Street
Sharon, CT 06069
phone: (860) 364-5224

Amenia Town Hall
4988 Route 22
Amenia, NY 12501
phone: 845-373-8118 extension 101

NYSDEC
Attn: Call For Appointment
21 South Putt Corners Road
New Paltz, NY 12561-1620
phone: 845-256-3154

Who to Contact

Comments and questions are always welcome and should be directed as follows:

Project Related Questions

Janet Brown
Department of Environmental Conservation
Division of Environmental Remediation
21 South Putt Corners Rd
New Paltz, NY 12561-1620
845-256-3826
jebrown@gw.dec.state.ny.us

Site-Related Health Questions

Fay Navratil
New York State Department of Health
Bureau of Environmental Exposure Investigation
Flanigan Square, 547 River Street
Troy, NY 12180
1-800-458-1158, ext: 27880
fsn01@health.state.ny.us

We encourage you to share this fact sheet with neighbors and tenants, and/or post this fact sheet in a prominent area of your building for others to see.

Receive Site Fact Sheets by Email

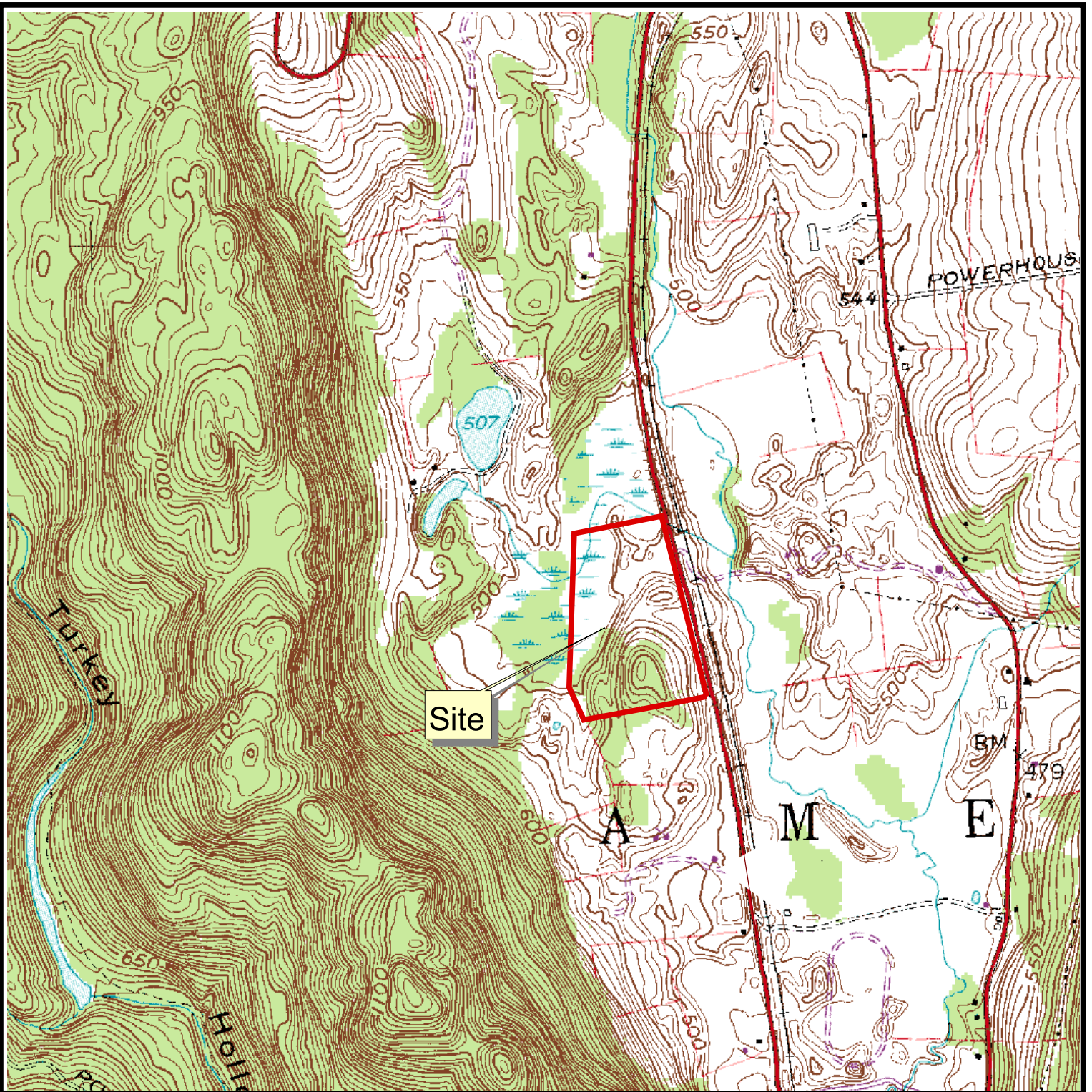
Have site information such as this fact sheet sent right to your email inbox. NYSDEC invites you to sign up with one or more contaminated sites county email listservs available at the following web page: <http://www.dec.ny.gov/chemical/61092.html>. It's quick, it's free, and it will help keep you *better informed*.



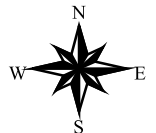
As a listserv member, you will periodically receive site-related information/announcements for all contaminated sites in the county(ies) you select.

You may continue also to receive paper copies of site information for a time after you sign up with a county listserv, until the transition to electronic distribution is complete.

Note: Please disregard if you already have signed up and received this fact sheet electronically.



MAP REFERENCE:
 USGS Topographic Map
 Amenia, New York Quadrangle, Dated 2000
 7.5 Minute Series, DRG, NAD 83
 Downloaded from CUGIR on 1/10/2011



ARCHITECTURE &
 BUILDING SYSTEMS ENGINEERING
 CIVIL ENGINEERING
 ENVIRONMENTAL SERVICES
 SURVEY & LAND INFORMATION
 SERVICES

C.T.MALE ASSOCIATES, P.C.

50 CENTURY HILL DRIVE, LATHAM, NY 12110
 PHONE (518) 786-7400 FAX (518) 786-7299

FIGURE 1 - SITE LOCATION MAP

Amenia Town Landfill

TOWN OF AMENIA

DUTCHESS COUNTY, NY

SCALE: 1"= 1,000'

DRAFTER: JLM

PROJECT No: 07.7052