



**Department of
Environmental
Conservation**

Where to Find Information:

Project documents are available at the following location(s) to help the public stay informed:

NYSDEC, Central Office
Division of Environmental Remediation
Attn: Alexandra Servis
625 Broadway, 11th Floor
Albany, NY 12233-7017
Call in advance: (518) 402-9809

Who to Contact:

Comments and questions are always welcome and should be directed as follows:

Project-Related Questions:
Alexandra Servis, Project
Manager NYSDEC, Central
Office

Division of Environmental Remediation
625 Broadway, 11th Floor
Albany, NY 12233-7017
(518) 402-9809
alexandra.servis@dec.ny.gov

Project-Related Public Health Questions:

Wendy Kuehner, Project Manager
NYSDOH
Empire State Plaza
Corning Tower Room 1787
Albany, NY 12237
(518) 402-7880
beei@health.ny.gov

For additional information on the New
York State Superfund and Petroleum
Remediation Programs, visit:
www.dec.ny.gov/chemical/8439.html

For additional information on the
State's investigation and response in
the Newburgh and Beaver Dam Lake
areas, visit:

<http://www.dec.ny.gov/chemical/108825.html>

FACT SHEET

Beaver Dam Lake Protection and Rehabilitation District Perfluorinated Compound Sampling Update

November 2017

Status Update

Informational Public Meeting

Wednesday November 15, 2017 at 7:00 PM
Washingtonville Middle School Auditorium
38 West Main Street
Washingtonville, New York 10992

The public is invited to an informational public meeting to discuss the status of sampling activities conducted within the Beaver Dam Lake Protection and Rehabilitation District.

Introduction

The New York State Department of Health (NYSDOH) and New York State Department of Environmental Conservation (NYSDEC) are holding an informational meeting to provide an update on sampling activities conducted to date within the Beaver Dam Lake Protection and Rehabilitation District.

Perfluorinated compounds (PFCs), specifically perfluorooctane sulfonate (PFOS) and perfluorooctanoic acid (PFOA), have been detected in the surface water and fish tissue of Beaver Dam Lake and its tributaries, which is part of the Beaver Dam Lake Protection and Rehabilitation District. Beaver Dam Lake surface water is not used as a source of drinking water. The PFCs have been determined to originate from an area in the western part of Stewart International Airport, where firefighting foam was used to extinguish a major aircraft fire in 1996.

During the meeting, representatives of NYSDOH and NYSDEC will make a short presentation, followed by an availability session to provide an opportunity for the community to ask questions about the investigations.

To date, the State has sampled more than 200 wells in the Beaver Dam Lake area. Low levels of PFCs were detected in some wells, but no drinking water was found to have levels exceeding EPA's lifetime health advisory level of 70 ppt for PFOS and PFOA individually or combined. PFOA and PFOS were not detected in any of the wells belonging to the Beaver Dam Lake Water Corporation. Based on the data collected to date, there is not a need to expand the sampling area. A summary of the sampling and findings will be provided at the meeting.

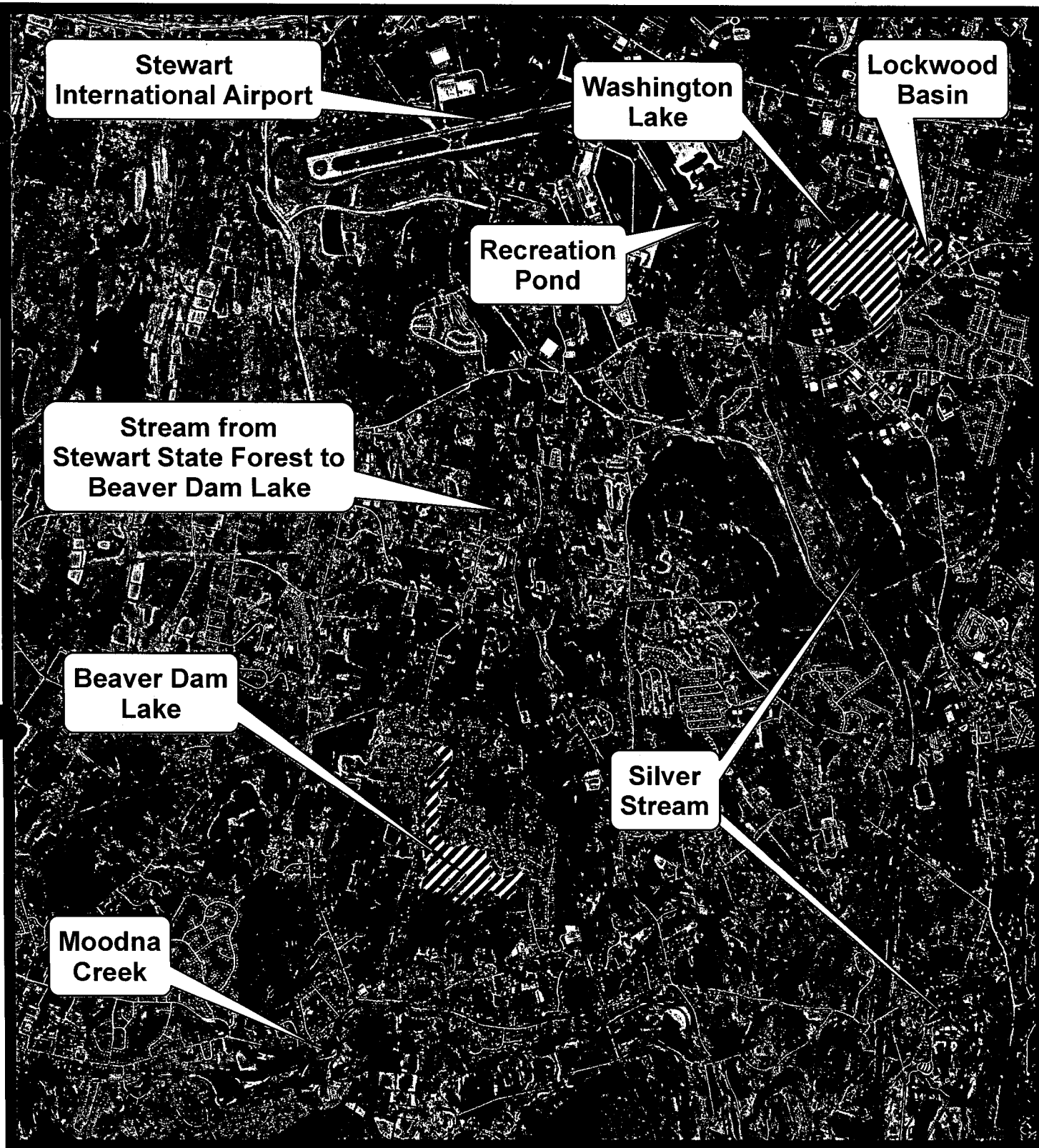
The State has also sampled surface water and fish tissue in the Beaver Dam Lake watershed. Based on the fish sample results, the State has issued a

catch and release advisory for Beaver Dam Lake, the tributary from Stewart State Forest to Beaver Dam Lake, and Moodna Creek. The figure below shows these areas in relation to Stewart International Airport.

Receive Site Fact Sheets by Email

Have site information such as this fact sheet sent right to your email inbox. DEC invites you to sign up with one or more contaminated sites county email listservs available at the following web page: <http://www.dec.ny.gov/chemical/61092.html>. It's quick, it's free, and it will help keep you *better informed*.

As a listserv member, you will periodically receive site-related information/announcements for all contaminated sites in the county(ies) you select. **Note:** Please disregard if you already have signed up and received this fact sheet electronically.



0 0.5 1 2 3 4 Miles

Waterbodies Subject to Catch and Release Advisories Orange County, New York



Department of
Environmental
Conservation

11/2017

PFC Contamination Update

November 12, 2017

District Board Members

Lawrence Rossini, Chairman
Bridget Bergonzi, Vice Chair
Doreen LoSauro, Secretary
Louis Cascino
Margaret Collins

Beaver Dam Lake Protection and Rehabilitation District

557 Shore Drive, New Windsor, NY 12553 -- 845-496-6190 -- beaverdamlake@gmail.com
Web Page: www.orangecountygov.com/Beaver-Dam-Lake-District

The following questions, comments and concerns regarding the Beaver Dam Lake PFC contamination situation were received from local residents during the course of this year and were submitted to the NY State Department of Health (NYSDOH) and the NY State Department of Environmental Conservation (NYSDEC) in September. It is anticipated they will be addressed by these agencies during their informational meeting scheduled for 7 PM on November 15th at the Washingtonville Middle School.

NOTE - NYSDEC previously determined that PFC contamination in Beaver Dam Lake originates at the site of the 1996 FEDEX aircraft fire at Stewart Airport and PFC contamination in the City of Newburgh's water supply reservoir (Washington Lake) originates at a separate site at the New York Air National Guard facility. Surface soil test data available on the NYSDEC web site <http://www.dec.ny.gov/chemical/108825.html> suggests that the level of PFC (PFOS) measured in 2016 at the FEDEX fire site is over 300 times the level measured in the soil at the ANG base. The level of PFCs measured in Beaver Dam Lake are lower than the levels measured in Washington Lake. Also, a number of private water wells in and around the Beaver Dam Lake Community have tested positive for PFC contamination.

1. **PFC Web Page** - At the February informational meeting, it was stated that NYSDEC and NYSDOH would be creating a dedicated web page for the "Newburgh" issues. After concerns were expressed with having Beaver Dam lumped in with the City of Newburgh, it appeared to be clarified that a web page would be dedicated specifically for the BDL issue. What is the date that this web page (for Beaver Dam Lake) will become active?
2. **Data Requested** - The following data specific to the Beaver Dam Lake watershed and the area immediately downstream in Salisbury Mills should be provided:
 - A. **Blood Tests**
 - Total requests for blood tests
 - Total blood tests completed
 - Range of PFC concentrations detected in blood
 - Follow-up blood testing planned (to determine increase / decrease in PFC levels)
 - Total number of blood test requests declined by NYSDOH
 - B. **Well Testing**
 - Total requests for well testing.
 - Total wells sampled and tested.
 - Total wells where PFCs were detected.
 - Range of PFC concentrations detected in well water samples
 - Range of depths of wells where PFCs were detected
 - General location map showing area(s) where wells were tested and where they tested positive for PFCs
 - C. **POE Treatment Systems**
 - Total well owners offered treatment systems.
 - Total treatment systems installed.
 - Total treatment system installations pending.
 - Total treatment system installations declined by residents.
 - Total treatment system requests declined by NYSDEC / NYSDOH

3. Questions

- Will there be follow-up testing of uncontaminated wells located near contaminated wells?
- My neighbor's well tested positive but mine tested negative.
Will you come back in 6 months to a year and test my well again?
- Will there be follow-up testing of the lake and tributary streams?
- What is being done to eliminate flow of PFCs at the source at Stewart Airport?
- What is being done to reduce the level of PFC contamination in the lake?
- What is being done to reduce the level of PFC contamination in the groundwater?
- Is the level of PFC contamination in our wells increasing or decreasing?
- Is the level of PFC contamination in Beaver Dam Lake and the feeder streams increasing or decreasing?
- Is it safe to use the lake for contact recreation (swimming, fishing, etc)?
- At the February meeting, NYSDEC stated that the PFCs in the wells appeared to have a different chemical "fingerprint" than the PFCs found in Beaver Dam Lake indicating there may be more than one source of contamination. Has this possibility been further evaluated and have other sources been identified?

4. Questions added November 9th

- How long will the "Catch and Release" restrictions remain in effect for Beaver Dam Lake?
- Will there be additional testing of PFC levels in fish in Beaver Dam Lake to determine if levels are increasing or decreasing?
- Will the Catch and Release restrictions apply to newly stocked fish?
- A great deal of publicity is in the media regarding the contamination of Washington Lake and requests by NY and Federal officials to remediate the source of PFC contamination at the ANG facility. Why isn't more emphasis being placed on remediating the separate source of PFC contamination affecting the Beaver Dam Lake community?

5. Questions Added November 12th

- Is there a cutoff date for requesting blood tests?
- Is there a cutoff date for requesting water well tests?
- NYSDEC installed POE treatment systems on a number of private wells. How long will NYSDEC maintain these systems at no cost to present and future homeowners?