

# **BUILDING 330C SWMU REMOVAL: CERTIFICATION OF SWMU CLOSURE**

**AT**

**IPARK 84  
FORMER IBM EAST FISHKILL FACILITY**

**OCTOBER 2019**

**PREPARED FOR:**

**JESSICA LACLAIR  
NEW YORK STATE DEPT. OF ENVIRONMENTAL CONSERVATION  
DEPT. OF ENVIRONMENTAL REMEDIATION  
625 BROADWAY  
ALBANY, NEW YORK 12233-7013**

**WALDEN ENVIRONMENTAL ENGINEERING, PLLC**

**Industry Leader in Environmental Engineering Consulting**

———— PROACTIVE SOLUTIONS SINCE 1995 ————



October 31, 2019  
iPark0118.30

Ms. Jessica LaClair  
Environmental Engineer  
Division of Environmental Remediation  
New York State Department of Environmental Conservation  
625 Broadway  
Albany, NY 12233-7013

Re: iPark 84, Former IBM East Fishkill Facility  
Building 330C SWMU Removal  
Certification of SWMU Closure

Dear Ms. LaClair:

This certification letter has been prepared by Walden Environmental Engineering, PLLC (“Walden”) on behalf of iPark East Fishkill LLC (“iPark”) to document the closure of Solid Waste Management Units, or SWMU(s) during the Building 330C Closure Project (“Project”) at iPark Building 330C, located at 2070 State Route 52 in Hopewell Junction, New York, herein after referred to as the “Site”. The work was completed in accordance with a Work Plan (“Plan”) prepared by Walden (“Work Plan for Decontamination, Demolition and Removal of Solid Waste Management Unit (SWMU) Components in Building 330C”). The Plan was approved by the New York State Department of Environmental Conservation (“NYSDEC”) via letter on June 26, 2019.

The SWMU removal work was performed by Highground Industrial of Florida, New York (“HGI”), with Royal Carting Company (“Royal”) of Hopewell Junction, New York providing waste transportation services. Walden provided periodic third-party observation and testing during the work.

### **Overview**

The goal of the Project was to remove and decontaminate all components associated with the SWMUs in specified locations of Building 330C. The categories of SWMUs that were closed included:

- Industrial wastewater lift stations and their associated components (acid components).



- Fluoride lift stations and their associated components (fluoride components).

In summary, the SWMU closure activities included the following, which will be described in further detail below:

- Survey of specified SWMU components within Building 330C.
- Removal/decontamination of SWMU components.
- Recycling/disposal of decontaminated SWMU components.
- Preparation of this report to certify that all SWMU components associated with the specified portion of Building 330C have been removed and disposed of in accordance with the Plan.

Walden developed a scope of work for the demolition, decontamination and removal of the SWMUs piping and associated components, and was also retained to provide partial third-party oversight of the work. The project was initiated and completed in August 2019. In general, the SWMUs that were closed during this Project consisted of eight (8) distinct lift stations which were comprised of piping, secondary containment piping, pumps, motors, sump tanks, secondary containment sump tanks, piping containment troughs, and electrical equipment that had been used to handle chemical wastewater generated from IBM activities. The former lift stations and their respective piping runs are shown on the Building 330C SWMU Removal Figures (“Site Plans”, presented in Appendix A), and differentiated by SWMU type. Chemicals that were used during former work activities included hydrofluoric acid and fluoride-containing solutions. Each lift station carried waste chemicals through a network of piping, which terminated in centralized sumps. From these centralized sumps, the waste was then transferred to a wastewater treatment plant, which is currently operated by GLOBALFOUNDRIES US2 LLC (“Global Foundries”). All components of the disposal systems were segregated by waste stream.

### **SWMU Survey (October 2018)**

The initial step of the Project included a survey within Building 330C to identify all SWMU components that were to be removed. Each SWMU is shown on the Site Plan drawings (see Appendix A). Table 1 summarizes the ID#, description, location, status, description, and length of associated drainage/vent piping.

### **SWMU Closure Activities (August 2019)**

Following the survey activities described above, iPark confirmed that the inventory was consistent with all known information and authorized the work to be performed.



SWMU removal work began on August 7 and was completed on August 21, 2019, with nine (9) on-site work days. Walden was on-site to oversee the work on August 7, 8, 14, 16, and 21, 2019. The work was performed in accordance with the Health and Safety Plan, included in the NYSDEC-approved Work Plan. Individual checklists, broken down by each lift station, are included as Appendix B. These checklists include the following information: lift station identification number with description and component name, location (based on column reference numbers within Building 330C), decommissioning details, and recycling/disposal information.

The SWMU removal activities are described below. Representative photographs documenting the work activities are presented in Appendix C.

- The work area was prepared by shutting off and locking out all live electrical lines and establishing an exclusion zone to prevent outside personnel from entering the work area.
- Residual wastewater, solids, and all other debris remaining within each SWMU and its components were removed, and said items were subsequently decontaminated. Acid and fluoride components were staged separately so these distinct SWMU components were not commingled.
  - A minimal amount of piping associated with LS IW ECOL 1816 remained in place above the ceiling line due to obstructions above the ceiling height. Removal of this small portion of piping could not be completed in a safe manner without removing necessary building components. Piping left in place does not contain any residual material.
- All wash water generated during the decontamination activities was drummed separately based on the SWMU components' former use (acid or fluoride). After approval from iPark and subsequent discussions with HGI, all wash water was transferred to an active lift station which is connected to the Global Foundries wastewater treatment plant.
- Any solids encountered during decontamination were removed from SWMU components and drummed, and were similarly segregated according to waste stream. All liquid and solid waste was transported off-site and disposed of in accordance with local, state and federal regulations.
- Decontamination verification of all SWMU components was performed to confirm that the pH was within the target pH range of 5.0-8.0 and that there was no residual fluoride prior to staging components for off-site disposal.
- All decontaminated SWMU components including piping, secondary containment piping, pumps, motors, sump tanks, secondary containment sump tanks, piping containment troughs, and electrical equipment that handled chemical wastewater generated from IBM



activities was disposed of off-site. The associated signed and completed manifests are presented in Appendix D.

All identified components were successfully removed, decontaminated and sent off-site for disposal in accordance with all local, state, and federal regulations. A final inventory of all removed and decontaminated SWMU components can be found in Table 1.

### **Third-Party Observation and Testing**

Walden's third-party oversight [on five (5) of the nine (9) work days] and testing was performed to confirm that closure activities were consistent with the NYSDEC-approved Plan. All SWMU components were visually inspected, tested for pH using Hydriion<sup>®</sup> test strips, and tested for residual fluoride using CTL Scientific Supply Corp. F-100 test strips. Decontamination was verified by Walden as follows:

- Walden inspected every SWMU and its associated components listed in Table 1 to verify that each item to be recycled or disposed of showed no visible evidence of residual liquids or solids.
- Walden conducted testing of decontaminated SWMU components including piping, secondary containment piping, pumps, motors, sump tanks, secondary containment sump tanks, piping containment troughs, and electrical equipment. All SWMU components were tested for residual fluoride and pH prior to off-site disposal. Components were only approved for disposal if the pH strip reading was between 5.0 and 8.0 and the fluoride test strips displayed a non-detect result. The date and ID number for each sample and the pH and fluoride test strip results were recorded in the field book. The wash water source for the project was also periodically checked using pH test strips, and found to have a slightly acidic pH (6.0-6.5).

Post-decontamination test results were recorded on data tables and summarized in Table 2, representing 337 separate pH and residual fluoride tests performed on decontaminated components. The final disposition of each SWMU and component presented in Table 1 has been summarized in the checklist provided in Appendix B.

### **Final SWMU Status Change**

Following NYSDEC acceptance of this certification report, iPark will coordinate with IBM/Global Foundries to update the SWMU status database to reflect the Project activities. The next periodic RCRA report submitted to the NYSDEC by IBM will include the updated information.

Ms. Jessica LaClair  
iPark 84 Building 330C SWMU Removal - 5 -  
October 31, 2019



### **Certification Statement**

I, Nora M. Brew, P.E., as a licensed Professional Engineer in the State of New York, hereby certify that the SWMU's identified in Table 1 of this letter at the iPark 84 Facility in Hopewell Junction, New York have been closed in accordance with the Work Plan for Decontamination, Demolition and Removal of Solid Waste Management Unit (SWMU) Components in Building 330C. This certification is based on Walden's on-site observation during implementation of the SWMU closure activities. I also certify that, to the best of my knowledge, this certification report accurately reflects the SWMU closure activities that were conducted.

Please feel free to contact me with any questions you may have at (516) 624-7200.

Very truly yours,

Walden Environmental Engineering, PLLC

Nora M. Brew, P.E.  
Senior Project Manager



cc: J. Kenney, NYSDOH  
D. Chartrand, IBM  
M. Buckley, iPark  
C. Monheit, iPark

### **Attachments:**

#### Tables

Table 1: SWMU Inventory

Table 2: Post-Decontamination SWMU Testing Summary

#### Appendices

Appendix A: Site Plans

Appendix B: SWMU Checklists

Appendix C: Site Photos

Appendix D: Offsite Disposal Manifests

Z:\iPark0118\iPark0118.30 - Bldg 330C SWMU Removal\Report\Report.docx

**Table 1**

**SWMU Inventory**

**iPark 84**  
**East Fishkill, New York**

**Table 1**  
**Summary of SWMU Removal Conducted in Building 330C (August 2019)**

SWMU ID #	ECOL ID #	Description	Location	Status	Associated Drainage Piping (Linear Feet)	Associated Vent Piping (Linear Feet)
B/330C LS FL	ECOL 2292	Fluoride Lift Station	Column H32	Removed	120	120
B/330C LS IW	ECOL 2293	Acid Lift Station	Column H32	Removed	170	170
B/330C LS IW	ECOL 2291	Acid Lift Station combined with ECOL 2290	Column G32	Removed	140	140
B/330C LS IW	ECOL 2290	Acid Lift Station combined with ECOL 2291	Column G32	Removed	-	-
B/330C LS IW	ECOL 2289	Acid Lift Station	Column G31	Removed	45	45
B/330C LS IW	ECOL 2288	Acid Lift Station	Column H30	Removed	120	120

B/330C LS IW	ECOL 1816	Acid Lift Station	Column K33	Removed*		
B/330C LS IW	ECOL 2255	Acid Lift Station	Column AA-30	Removed		

**Additional Items Removed**

SWMU ID #	Item	Description	Location	Status	Associated Piping (Linear Feet)
N/A	Toxic Exhaust Duct	Precision Flow Technologies cabinet labeled "chemical hazard" is connected to the duct	Cabinet between columns G30 and F30	Removed	220
N/A	Acid Exhaust Duct	Large vent duct that goes through the roof	Between columns I 30/32 and G 31/32	Removed	200

Note: Refer to Appendix C for additional details.

\*See SWMU Closure Activities (August 2019) section within certification letter. A minimal amount of piping associated with LS IW ECOL 1816 remained in place above the ceiling line due to obstructions above the ceiling height.



**Table 2**

**Post-Decontamination SWMU Testing Summary**

**iPark 84**  
**East Fishkill, New York**

**Table 2**  
**Summary of Post-Decontamination Testing Results**  
**Building 330C**

Sample ID#	DESCRIPTION	STATUS	RCRA STATUS	NOTES
8/8-1	Ind. Wastewater/Flouride	Removed	No Further Action	Decontaminated SWMU Component
8/8-2	Ind. Wastewater/Flouride	Removed	No Further Action	Decontaminated SWMU Component
8/8-3	Ind. Wastewater/Flouride	Removed	No Further Action	Decontaminated SWMU Component
8/8-4	Ind. Wastewater/Flouride	Removed	No Further Action	Decontaminated SWMU Component
8/8-5	Ind. Wastewater/Flouride	Removed	No Further Action	Decontaminated SWMU Component
8/8-6	Ind. Wastewater/Flouride	Removed	No Further Action	Decontaminated SWMU Component
8/8-7	Ind. Wastewater/Flouride	Removed	No Further Action	Decontaminated SWMU Component
8/8-8	Ind. Wastewater/Flouride	Removed	No Further Action	Decontaminated SWMU Component
8/8-9	Ind. Wastewater/Flouride	Removed	No Further Action	Decontaminated SWMU Component
8/8-10	Ind. Wastewater/Flouride	Removed	No Further Action	Decontaminated SWMU Component
8/8-11	Ind. Wastewater/Flouride	Removed	No Further Action	Decontaminated SWMU Component
8/8-12	Ind. Wastewater/Flouride	Removed	No Further Action	Decontaminated SWMU Component
8/8-13	Ind. Wastewater/Flouride	Removed	No Further Action	Decontaminated SWMU Component
8/8-14	Ind. Wastewater/Flouride	Removed	No Further Action	Decontaminated SWMU Component
8/8-15	Ind. Wastewater/Flouride	Removed	No Further Action	Decontaminated SWMU Component
8/8-16	Ind. Wastewater/Flouride	Removed	No Further Action	Decontaminated SWMU Component
8/8-17	Ind. Wastewater/Flouride	Removed	No Further Action	Decontaminated SWMU Component
8/8-18	Ind. Wastewater/Flouride	Removed	No Further Action	Decontaminated SWMU Component
8/8-19	Ind. Wastewater/Flouride	Removed	No Further Action	Decontaminated SWMU Component
8/8-20	Ind. Wastewater/Flouride	Removed	No Further Action	Decontaminated SWMU Component
8/8-21	Ind. Wastewater/Flouride	Removed	No Further Action	Decontaminated SWMU Component
8/8-22	Ind. Wastewater/Flouride	Removed	No Further Action	Decontaminated SWMU Component
8/8-23	Ind. Wastewater/Flouride	Removed	No Further Action	Decontaminated SWMU Component
8/8-24	Ind. Wastewater/Flouride	Removed	No Further Action	Decontaminated SWMU Component
8/8-25	Ind. Wastewater/Flouride	Removed	No Further Action	Decontaminated SWMU Component
8/8-26	Ind. Wastewater/Flouride	Removed	No Further Action	Decontaminated SWMU Component
8/8-27	Ind. Wastewater/Flouride	Removed	No Further Action	Decontaminated SWMU Component
8/8-28	Ind. Wastewater/Flouride	Removed	No Further Action	Decontaminated SWMU Component
8/8-29	Ind. Wastewater/Flouride	Removed	No Further Action	Decontaminated SWMU Component
8/8-30	Ind. Wastewater/Flouride	Removed	No Further Action	Decontaminated SWMU Component
8/8-31	Ind. Wastewater/Flouride	Removed	No Further Action	Decontaminated SWMU Component
8/8-32	Ind. Wastewater/Flouride	Removed	No Further Action	Decontaminated SWMU Component
8/8-33	Ind. Wastewater/Flouride	Removed	No Further Action	Decontaminated SWMU Component

**iPark 84**  
**East Fishkill, New York**

**Table 2**  
**Summary of Post-Decontamination Testing Results**  
**Building 330C**

Sample ID#	DESCRIPTION	STATUS	RCRA STATUS	NOTES
8/8-34	Ind. Wastewater/Flouride	Removed	No Further Action	Decontaminated SWMU Component
8/8-35	Ind. Wastewater/Flouride	Removed	No Further Action	Decontaminated SWMU Component
8/8-36	Ind. Wastewater/Flouride	Removed	No Further Action	Decontaminated SWMU Component
8/8-37	Ind. Wastewater/Flouride	Removed	No Further Action	Decontaminated SWMU Component
8/14-1	Ind. Wastewater/Flouride	Removed	No Further Action	Decontaminated SWMU Component
8/14-2	Ind. Wastewater/Flouride	Removed	No Further Action	Decontaminated SWMU Component
8/14-3	Ind. Wastewater/Flouride	Removed	No Further Action	Decontaminated SWMU Component
8/14-4	Ind. Wastewater/Flouride	Removed	No Further Action	Decontaminated SWMU Component
8/14-5	Ind. Wastewater/Flouride	Removed	No Further Action	Decontaminated SWMU Component
8/14-6	Ind. Wastewater/Flouride	Removed	No Further Action	Decontaminated SWMU Component
8/14-7	Ind. Wastewater/Flouride	Removed	No Further Action	Decontaminated SWMU Component
8/14-8	Ind. Wastewater/Flouride	Removed	No Further Action	Decontaminated SWMU Component
8/14-9	Ind. Wastewater/Flouride	Removed	No Further Action	Decontaminated SWMU Component
8/14-10	Ind. Wastewater/Flouride	Removed	No Further Action	Decontaminated SWMU Component
8/14-11	Ind. Wastewater/Flouride	Removed	No Further Action	Decontaminated SWMU Component
8/14-12	Ind. Wastewater/Flouride	Removed	No Further Action	Decontaminated SWMU Component
8/14-13	Ind. Wastewater/Flouride	Removed	No Further Action	Decontaminated SWMU Component
8/14-14	Ind. Wastewater/Flouride	Removed	No Further Action	Decontaminated SWMU Component
8/14-15	Ind. Wastewater/Flouride	Removed	No Further Action	Decontaminated SWMU Component
8/14-16	Ind. Wastewater/Flouride	Removed	No Further Action	Decontaminated SWMU Component
8/14-17	Ind. Wastewater/Flouride	Removed	No Further Action	Decontaminated SWMU Component
8/14-18	Ind. Wastewater/Flouride	Removed	No Further Action	Decontaminated SWMU Component
8/14-19	Ind. Wastewater/Flouride	Removed	No Further Action	Decontaminated SWMU Component
8/14-20	Ind. Wastewater/Flouride	Removed	No Further Action	Decontaminated SWMU Component
8/14-21	Ind. Wastewater/Flouride	Removed	No Further Action	Decontaminated SWMU Component
8/14-22	Ind. Wastewater/Flouride	Removed	No Further Action	Decontaminated SWMU Component
8/14-23	Ind. Wastewater/Flouride	Removed	No Further Action	Decontaminated SWMU Component
8/14-24	Ind. Wastewater/Flouride	Removed	No Further Action	Decontaminated SWMU Component
8/14-25	Ind. Wastewater/Flouride	Removed	No Further Action	Decontaminated SWMU Component
8/14-26	Ind. Wastewater/Flouride	Removed	No Further Action	Decontaminated SWMU Component
8/14-27	Ind. Wastewater/Flouride	Removed	No Further Action	Decontaminated SWMU Component
8/14-28	Ind. Wastewater/Flouride	Removed	No Further Action	Decontaminated SWMU Component
8/14-29	Ind. Wastewater/Flouride	Removed	No Further Action	Decontaminated SWMU Component

**iPark 84**  
**East Fishkill, New York**

**Table 2**  
**Summary of Post-Decontamination Testing Results**  
**Building 330C**

Sample ID#	DESCRIPTION	STATUS	RCRA STATUS	NOTES
8/14-30	Ind. Wastewater/Flouride	Removed	No Further Action	Decontaminated SWMU Component
8/14-31	Ind. Wastewater/Flouride	Removed	No Further Action	Decontaminated SWMU Component
8/14-32	Ind. Wastewater/Flouride	Removed	No Further Action	Decontaminated SWMU Component
8/14-33	Ind. Wastewater/Flouride	Removed	No Further Action	Decontaminated SWMU Component
8/14-34	Ind. Wastewater/Flouride	Removed	No Further Action	Decontaminated SWMU Component
8/14-35	Ind. Wastewater/Flouride	Removed	No Further Action	Decontaminated SWMU Component
8/14-36	Ind. Wastewater/Flouride	Removed	No Further Action	Decontaminated SWMU Component
8/14-37	Ind. Wastewater/Flouride	Removed	No Further Action	Decontaminated SWMU Component
8/14-38	Ind. Wastewater/Flouride	Removed	No Further Action	Decontaminated SWMU Component
8/14-39	Ind. Wastewater/Flouride	Removed	No Further Action	Decontaminated SWMU Component
8/14-40	Ind. Wastewater/Flouride	Removed	No Further Action	Decontaminated SWMU Component
8/14-41	Ind. Wastewater/Flouride	Removed	No Further Action	Decontaminated SWMU Component
8/14-42	Ind. Wastewater/Flouride	Removed	No Further Action	Decontaminated SWMU Component
8/14-43	Ind. Wastewater/Flouride	Removed	No Further Action	Decontaminated SWMU Component
8/14-44	Ind. Wastewater/Flouride	Removed	No Further Action	Decontaminated SWMU Component
8/14-45	Ind. Wastewater/Flouride	Removed	No Further Action	Decontaminated SWMU Component
8/14-46	Ind. Wastewater/Flouride	Removed	No Further Action	Decontaminated SWMU Component
8/14-47	Ind. Wastewater/Flouride	Removed	No Further Action	Decontaminated SWMU Component
8/14-48	Ind. Wastewater/Flouride	Removed	No Further Action	Decontaminated SWMU Component
8/14-49	Ind. Wastewater/Flouride	Removed	No Further Action	Decontaminated SWMU Component
8/14-50	Ind. Wastewater/Flouride	Removed	No Further Action	Decontaminated SWMU Component
8/14-51	Ind. Wastewater/Flouride	Removed	No Further Action	Decontaminated SWMU Component
8/14-52	Ind. Wastewater/Flouride	Removed	No Further Action	Decontaminated SWMU Component
8/14-53	Ind. Wastewater/Flouride	Removed	No Further Action	Decontaminated SWMU Component
8/14-54	Ind. Wastewater/Flouride	Removed	No Further Action	Decontaminated SWMU Component
8/14-55	Ind. Wastewater/Flouride	Removed	No Further Action	Decontaminated SWMU Component
8/14-56	Ind. Wastewater/Flouride	Removed	No Further Action	Decontaminated SWMU Component
8/14-57	Ind. Wastewater/Flouride	Removed	No Further Action	Decontaminated SWMU Component
8/14-58	Ind. Wastewater/Flouride	Removed	No Further Action	Decontaminated SWMU Component
8/14-59	Ind. Wastewater/Flouride	Removed	No Further Action	Decontaminated SWMU Component
8/14-60	Ind. Wastewater/Flouride	Removed	No Further Action	Decontaminated SWMU Component
8/14-61	Ind. Wastewater/Flouride	Removed	No Further Action	Decontaminated SWMU Component
8/14-62	Ind. Wastewater/Flouride	Removed	No Further Action	Decontaminated SWMU Component

**iPark 84**  
**East Fishkill, New York**

**Table 2**  
**Summary of Post-Decontamination Testing Results**  
**Building 330C**

Sample ID#	DESCRIPTION	STATUS	RCRA STATUS	NOTES
8/14-63	Ind. Wastewater/Flouride	Removed	No Further Action	Decontaminated SWMU Component
8/14-64	Ind. Wastewater/Flouride	Removed	No Further Action	Decontaminated SWMU Component
8/14-65	Ind. Wastewater/Flouride	Removed	No Further Action	Decontaminated SWMU Component
8/14-66	Ind. Wastewater/Flouride	Removed	No Further Action	Decontaminated SWMU Component
8/14-67	Ind. Wastewater/Flouride	Removed	No Further Action	Decontaminated SWMU Component
8/14-68	Ind. Wastewater/Flouride	Removed	No Further Action	Decontaminated SWMU Component
8/16-1	Ind. Wastewater/Flouride	Removed	No Further Action	Decontaminated SWMU Component
8/16-2	Ind. Wastewater/Flouride	Removed	No Further Action	Decontaminated SWMU Component
8/16-3	Ind. Wastewater/Flouride	Removed	No Further Action	Decontaminated SWMU Component
8/16-4	Ind. Wastewater/Flouride	Removed	No Further Action	Decontaminated SWMU Component
8/16-5	Ind. Wastewater/Flouride	Removed	No Further Action	Decontaminated SWMU Component
8/16-6	Ind. Wastewater/Flouride	Removed	No Further Action	Decontaminated SWMU Component
8/16-7	Ind. Wastewater/Flouride	Removed	No Further Action	Decontaminated SWMU Component
8/16-8	Ind. Wastewater/Flouride	Removed	No Further Action	Decontaminated SWMU Component
8/16-9	Ind. Wastewater/Flouride	Removed	No Further Action	Decontaminated SWMU Component
8/16-10	Ind. Wastewater/Flouride	Removed	No Further Action	Decontaminated SWMU Component
8/16-11	Ind. Wastewater/Flouride	Removed	No Further Action	Decontaminated SWMU Component
8/16-12	Ind. Wastewater/Flouride	Removed	No Further Action	Decontaminated SWMU Component
8/16-13	Ind. Wastewater/Flouride	Removed	No Further Action	Decontaminated SWMU Component
8/16-14	Ind. Wastewater/Flouride	Removed	No Further Action	Decontaminated SWMU Component
8/16-15	Ind. Wastewater/Flouride	Removed	No Further Action	Decontaminated SWMU Component
8/16-16	Ind. Wastewater/Flouride	Removed	No Further Action	Decontaminated SWMU Component
8/16-17	Ind. Wastewater/Flouride	Removed	No Further Action	Decontaminated SWMU Component
8/16-18	Ind. Wastewater/Flouride	Removed	No Further Action	Decontaminated SWMU Component
8/16-19	Ind. Wastewater/Flouride	Removed	No Further Action	Decontaminated SWMU Component
8/16-20	Ind. Wastewater/Flouride	Removed	No Further Action	Decontaminated SWMU Component
8/16-21	Ind. Wastewater/Flouride	Removed	No Further Action	Decontaminated SWMU Component
8/16-22	Ind. Wastewater/Flouride	Removed	No Further Action	Decontaminated SWMU Component
8/16-23	Ind. Wastewater/Flouride	Removed	No Further Action	Decontaminated SWMU Component
8/21-1	Ind. Wastewater/Flouride	Removed	No Further Action	Decontaminated SWMU Component
8/21-2	Ind. Wastewater/Flouride	Removed	No Further Action	Decontaminated SWMU Component
8/21-3	Ind. Wastewater/Flouride	Removed	No Further Action	Decontaminated SWMU Component
8/21-4	Ind. Wastewater/Flouride	Removed	No Further Action	Decontaminated SWMU Component

**iPark 84**  
**East Fishkill, New York**

**Table 2**  
**Summary of Post-Decontamination Testing Results**  
**Building 330C**

Sample ID#	DESCRIPTION	STATUS	RCRA STATUS	NOTES
8/21-5	Ind. Wastewater/Flouride	Removed	No Further Action	Decontaminated SWMU Component
8/21-6	Ind. Wastewater/Flouride	Removed	No Further Action	Decontaminated SWMU Component
8/21-7	Ind. Wastewater/Flouride	Removed	No Further Action	Decontaminated SWMU Component
8/21-8	Ind. Wastewater/Flouride	Removed	No Further Action	Decontaminated SWMU Component
8/21-9	Ind. Wastewater/Flouride	Removed	No Further Action	Decontaminated SWMU Component
8/21-10	Ind. Wastewater/Flouride	Removed	No Further Action	Decontaminated SWMU Component
8/21-11	Ind. Wastewater/Flouride	Removed	No Further Action	Decontaminated SWMU Component
8/21-12	Ind. Wastewater/Flouride	Removed	No Further Action	Decontaminated SWMU Component
8/21-13	Ind. Wastewater/Flouride	Removed	No Further Action	Decontaminated SWMU Component
8/21-14	Ind. Wastewater/Flouride	Removed	No Further Action	Decontaminated SWMU Component
8/21-15	Ind. Wastewater/Flouride	Removed	No Further Action	Decontaminated SWMU Component
8/21-16	Ind. Wastewater/Flouride	Removed	No Further Action	Decontaminated SWMU Component
8/21-17	Ind. Wastewater/Flouride	Removed	No Further Action	Decontaminated SWMU Component
8/21-18	Ind. Wastewater/Flouride	Removed	No Further Action	Decontaminated SWMU Component
8/21-19	Ind. Wastewater/Flouride	Removed	No Further Action	Decontaminated SWMU Component
8/21-20	Ind. Wastewater/Flouride	Removed	No Further Action	Decontaminated SWMU Component
8/21-21	Ind. Wastewater/Flouride	Removed	No Further Action	Decontaminated SWMU Component
8/21-22	Ind. Wastewater/Flouride	Removed	No Further Action	Decontaminated SWMU Component
8/21-23	Ind. Wastewater/Flouride	Removed	No Further Action	Decontaminated SWMU Component
8/21-24	Ind. Wastewater/Flouride	Removed	No Further Action	Decontaminated SWMU Component
8/21-25	Ind. Wastewater/Flouride	Removed	No Further Action	Decontaminated SWMU Component
8/21-26	Ind. Wastewater/Flouride	Removed	No Further Action	Decontaminated SWMU Component
8/21-27	Ind. Wastewater/Flouride	Removed	No Further Action	Decontaminated SWMU Component
8/21-28	Ind. Wastewater/Flouride	Removed	No Further Action	Decontaminated SWMU Component
8/21-29	Ind. Wastewater/Flouride	Removed	No Further Action	Decontaminated SWMU Component
8/21-30	Ind. Wastewater/Flouride	Removed	No Further Action	Decontaminated SWMU Component
8/21-31	Ind. Wastewater/Flouride	Removed	No Further Action	Decontaminated SWMU Component
8/21-32	Ind. Wastewater/Flouride	Removed	No Further Action	Decontaminated SWMU Component
8/21-33	Ind. Wastewater/Flouride	Removed	No Further Action	Decontaminated SWMU Component
8/21-34	Ind. Wastewater/Flouride	Removed	No Further Action	Decontaminated SWMU Component
8/21-35	Ind. Wastewater/Flouride	Removed	No Further Action	Decontaminated SWMU Component
8/21-36	Ind. Wastewater/Flouride	Removed	No Further Action	Decontaminated SWMU Component
8/21-37	Ind. Wastewater/Flouride	Removed	No Further Action	Decontaminated SWMU Component

**iPark 84**  
**East Fishkill, New York**

**Table 2**  
**Summary of Post-Decontamination Testing Results**  
**Building 330C**

Sample ID#	DESCRIPTION	STATUS	RCRA STATUS	NOTES
8/21-38	Ind. Wastewater/Flouride	Removed	No Further Action	Decontaminated SWMU Component
8/21-39	Ind. Wastewater/Flouride	Removed	No Further Action	Decontaminated SWMU Component
8/21-40	Ind. Wastewater/Flouride	Removed	No Further Action	Decontaminated SWMU Component
8/21-41	Ind. Wastewater/Flouride	Removed	No Further Action	Decontaminated SWMU Component
8/21-42	Ind. Wastewater/Flouride	Removed	No Further Action	Decontaminated SWMU Component
8/21-43	Ind. Wastewater/Flouride	Removed	No Further Action	Decontaminated SWMU Component
8/21-44	Ind. Wastewater/Flouride	Removed	No Further Action	Decontaminated SWMU Component
8/21-45	Ind. Wastewater/Flouride	Removed	No Further Action	Decontaminated SWMU Component
8/21-46	Ind. Wastewater/Flouride	Removed	No Further Action	Decontaminated SWMU Component
8/21-47	Ind. Wastewater/Flouride	Removed	No Further Action	Decontaminated SWMU Component
8/21-48	Ind. Wastewater/Flouride	Removed	No Further Action	Decontaminated SWMU Component
8/21-49	Ind. Wastewater/Flouride	Removed	No Further Action	Decontaminated SWMU Component
8/21-50	Ind. Wastewater/Flouride	Removed	No Further Action	Decontaminated SWMU Component
8/21-51	Ind. Wastewater/Flouride	Removed	No Further Action	Decontaminated SWMU Component
8/21-52	Ind. Wastewater/Flouride	Removed	No Further Action	Decontaminated SWMU Component
8/21-53	Ind. Wastewater/Flouride	Removed	No Further Action	Decontaminated SWMU Component
8/21-54	Ind. Wastewater/Flouride	Removed	No Further Action	Decontaminated SWMU Component
8/21-55	Ind. Wastewater/Flouride	Removed	No Further Action	Decontaminated SWMU Component
8/21-56	Ind. Wastewater/Flouride	Removed	No Further Action	Decontaminated SWMU Component
8/21-57	Ind. Wastewater/Flouride	Removed	No Further Action	Decontaminated SWMU Component
8/21-58	Ind. Wastewater/Flouride	Removed	No Further Action	Decontaminated SWMU Component
8/21-59	Ind. Wastewater/Flouride	Removed	No Further Action	Decontaminated SWMU Component
8/21-60	Ind. Wastewater/Flouride	Removed	No Further Action	Decontaminated SWMU Component
8/21-61	Ind. Wastewater/Flouride	Removed	No Further Action	Decontaminated SWMU Component
8/21-62	Ind. Wastewater/Flouride	Removed	No Further Action	Decontaminated SWMU Component
8/21-63	Ind. Wastewater/Flouride	Removed	No Further Action	Decontaminated SWMU Component
8/21-64	Ind. Wastewater/Flouride	Removed	No Further Action	Decontaminated SWMU Component
8/21-65	Ind. Wastewater/Flouride	Removed	No Further Action	Decontaminated SWMU Component
8/21-66	Ind. Wastewater/Flouride	Removed	No Further Action	Decontaminated SWMU Component
8/21-67	Ind. Wastewater/Flouride	Removed	No Further Action	Decontaminated SWMU Component
8/21-68	Ind. Wastewater/Flouride	Removed	No Further Action	Decontaminated SWMU Component
8/21-69	Ind. Wastewater/Flouride	Removed	No Further Action	Decontaminated SWMU Component
8/21-70	Ind. Wastewater/Flouride	Removed	No Further Action	Decontaminated SWMU Component

**iPark 84**  
**East Fishkill, New York**

**Table 2**  
**Summary of Post-Decontamination Testing Results**  
**Building 330C**

Sample ID#	DESCRIPTION	STATUS	RCRA STATUS	NOTES
8/21-71	Ind. Wastewater/Flouride	Removed	No Further Action	Decontaminated SWMU Component
8/21-72	Ind. Wastewater/Flouride	Removed	No Further Action	Decontaminated SWMU Component
8/21-73	Ind. Wastewater/Flouride	Removed	No Further Action	Decontaminated SWMU Component
8/21-74	Ind. Wastewater/Flouride	Removed	No Further Action	Decontaminated SWMU Component
8/21-75	Ind. Wastewater/Flouride	Removed	No Further Action	Decontaminated SWMU Component
8/21-76	Ind. Wastewater/Flouride	Removed	No Further Action	Decontaminated SWMU Component
8/21-77	Ind. Wastewater/Flouride	Removed	No Further Action	Decontaminated SWMU Component
8/21-78	Ind. Wastewater/Flouride	Removed	No Further Action	Decontaminated SWMU Component
8/21-79	Ind. Wastewater/Flouride	Removed	No Further Action	Decontaminated SWMU Component
8/21-80	Ind. Wastewater/Flouride	Removed	No Further Action	Decontaminated SWMU Component
8/21-81	Ind. Wastewater/Flouride	Removed	No Further Action	Decontaminated SWMU Component
8/21-82	Ind. Wastewater/Flouride	Removed	No Further Action	Decontaminated SWMU Component
8/21-83	Ind. Wastewater/Flouride	Removed	No Further Action	Decontaminated SWMU Component
8/21-84	Ind. Wastewater/Flouride	Removed	No Further Action	Decontaminated SWMU Component
8/21-85	Ind. Wastewater/Flouride	Removed	No Further Action	Decontaminated SWMU Component
8/21-86	Ind. Wastewater/Flouride	Removed	No Further Action	Decontaminated SWMU Component
8/21-87	Ind. Wastewater/Flouride	Removed	No Further Action	Decontaminated SWMU Component
8/21-88	Ind. Wastewater/Flouride	Removed	No Further Action	Decontaminated SWMU Component
8/21-89	Ind. Wastewater/Flouride	Removed	No Further Action	Decontaminated SWMU Component
8/21-90	Ind. Wastewater/Flouride	Removed	No Further Action	Decontaminated SWMU Component
8/21-91	Ind. Wastewater/Flouride	Removed	No Further Action	Decontaminated SWMU Component
8/21-92	Ind. Wastewater/Flouride	Removed	No Further Action	Decontaminated SWMU Component
8/21-93	Ind. Wastewater/Flouride	Removed	No Further Action	Decontaminated SWMU Component
8/21-94	Ind. Wastewater/Flouride	Removed	No Further Action	Decontaminated SWMU Component
8/21-95	Ind. Wastewater/Flouride	Removed	No Further Action	Decontaminated SWMU Component
8/21-96	Ind. Wastewater/Flouride	Removed	No Further Action	Decontaminated SWMU Component
8/21-97	Ind. Wastewater/Flouride	Removed	No Further Action	Decontaminated SWMU Component
8/21-98	Ind. Wastewater/Flouride	Removed	No Further Action	Decontaminated SWMU Component
8/21-99	Ind. Wastewater/Flouride	Removed	No Further Action	Decontaminated SWMU Component
8/21-100	Ind. Wastewater/Flouride	Removed	No Further Action	Decontaminated SWMU Component
8/21-101	Ind. Wastewater/Flouride	Removed	No Further Action	Decontaminated SWMU Component
8/21-102	Ind. Wastewater/Flouride	Removed	No Further Action	Decontaminated SWMU Component
8/21-103	Ind. Wastewater/Flouride	Removed	No Further Action	Decontaminated SWMU Component



**iPark 84**  
**East Fishkill, New York**

**Table 2**  
**Summary of Post-Decontamination Testing Results**  
**Building 330C**

Sample ID#	DESCRIPTION	STATUS	RCRA STATUS	NOTES
8/21-104	Ind. Wastewater/Flouride	Removed	No Further Action	Decontaminated SWMU Component
8/21-105	Ind. Wastewater/Flouride	Removed	No Further Action	Decontaminated SWMU Component
8/21-106	Ind. Wastewater/Flouride	Removed	No Further Action	Decontaminated SWMU Component
8/21-107	Ind. Wastewater/Flouride	Removed	No Further Action	Decontaminated SWMU Component
8/21-108	Ind. Wastewater/Flouride	Removed	No Further Action	Decontaminated SWMU Component
8/21-109	Ind. Wastewater/Flouride	Removed	No Further Action	Decontaminated SWMU Component
8/21-110	Ind. Wastewater/Flouride	Removed	No Further Action	Decontaminated SWMU Component
8/21-111	Ind. Wastewater/Flouride	Removed	No Further Action	Decontaminated SWMU Component
8/21-112	Ind. Wastewater/Flouride	Removed	No Further Action	Decontaminated SWMU Component
8/21-113	Ind. Wastewater/Flouride	Removed	No Further Action	Decontaminated SWMU Component
8/21-114	Ind. Wastewater/Flouride	Removed	No Further Action	Decontaminated SWMU Component
8/21-115	Ind. Wastewater/Flouride	Removed	No Further Action	Decontaminated SWMU Component
8/21-116	Ind. Wastewater/Flouride	Removed	No Further Action	Decontaminated SWMU Component
8/21-117	Ind. Wastewater/Flouride	Removed	No Further Action	Decontaminated SWMU Component
8/21-118	Ind. Wastewater/Flouride	Removed	No Further Action	Decontaminated SWMU Component
8/21-119	Ind. Wastewater/Flouride	Removed	No Further Action	Decontaminated SWMU Component
8/21-120	Ind. Wastewater/Flouride	Removed	No Further Action	Decontaminated SWMU Component
8/21-121	Ind. Wastewater/Flouride	Removed	No Further Action	Decontaminated SWMU Component
8/21-122	Ind. Wastewater/Flouride	Removed	No Further Action	Decontaminated SWMU Component
8/21-123	Ind. Wastewater/Flouride	Removed	No Further Action	Decontaminated SWMU Component
8/21-124	Ind. Wastewater/Flouride	Removed	No Further Action	Decontaminated SWMU Component
8/21-125	Ind. Wastewater/Flouride	Removed	No Further Action	Decontaminated SWMU Component
8/21-126	Ind. Wastewater/Flouride	Removed	No Further Action	Decontaminated SWMU Component
8/21-127	Ind. Wastewater/Flouride	Removed	No Further Action	Decontaminated SWMU Component
8/21-128	Ind. Wastewater/Flouride	Removed	No Further Action	Decontaminated SWMU Component
8/21-129	Ind. Wastewater/Flouride	Removed	No Further Action	Decontaminated SWMU Component
8/21-130	Ind. Wastewater/Flouride	Removed	No Further Action	Decontaminated SWMU Component
8/21-131	Ind. Wastewater/Flouride	Removed	No Further Action	Decontaminated SWMU Component
8/21-132	Ind. Wastewater/Flouride	Removed	No Further Action	Decontaminated SWMU Component
8/21-133	Ind. Wastewater/Flouride	Removed	No Further Action	Decontaminated SWMU Component
8/21-134	Ind. Wastewater/Flouride	Removed	No Further Action	Decontaminated SWMU Component
8/21-135	Ind. Wastewater/Flouride	Removed	No Further Action	Decontaminated SWMU Component
8/21-136	Ind. Wastewater/Flouride	Removed	No Further Action	Decontaminated SWMU Component

**iPark 84**  
**East Fishkill, New York**

**Table 2**  
**Summary of Post-Decontamination Testing Results**  
**Building 330C**

Sample ID#	DESCRIPTION	STATUS	RCRA STATUS	NOTES
8/21-137	Ind. Wastewater/Flouride	Removed	No Further Action	Decontaminated SWMU Component
8/21-138	Ind. Wastewater/Flouride	Removed	No Further Action	Decontaminated SWMU Component
8/21-139	Ind. Wastewater/Flouride	Removed	No Further Action	Decontaminated SWMU Component
8/21-140	Ind. Wastewater/Flouride	Removed	No Further Action	Decontaminated SWMU Component
8/21-141	Ind. Wastewater/Flouride	Removed	No Further Action	Decontaminated SWMU Component
8/21-142	Ind. Wastewater/Flouride	Removed	No Further Action	Decontaminated SWMU Component
8/21-143	Ind. Wastewater/Flouride	Removed	No Further Action	Decontaminated SWMU Component
8/21-144	Ind. Wastewater/Flouride	Removed	No Further Action	Decontaminated SWMU Component
8/21-145	Ind. Wastewater/Flouride	Removed	No Further Action	Decontaminated SWMU Component
8/21-146	Ind. Wastewater/Flouride	Removed	No Further Action	Decontaminated SWMU Component
8/21-147	Ind. Wastewater/Flouride	Removed	No Further Action	Decontaminated SWMU Component
8/21-148	Ind. Wastewater/Flouride	Removed	No Further Action	Decontaminated SWMU Component
8/21-149	Ind. Wastewater/Flouride	Removed	No Further Action	Decontaminated SWMU Component
8/21-150	Ind. Wastewater/Flouride	Removed	No Further Action	Decontaminated SWMU Component
8/21-151	Ind. Wastewater/Flouride	Removed	No Further Action	Decontaminated SWMU Component
8/21-152	Ind. Wastewater/Flouride	Removed	No Further Action	Decontaminated SWMU Component
8/21-153	Ind. Wastewater/Flouride	Removed	No Further Action	Decontaminated SWMU Component
8/21-154	Ind. Wastewater/Flouride	Removed	No Further Action	Decontaminated SWMU Component
8/21-155	Ind. Wastewater/Flouride	Removed	No Further Action	Decontaminated SWMU Component
8/21-156	Ind. Wastewater/Flouride	Removed	No Further Action	Decontaminated SWMU Component
8/21-157	Ind. Wastewater/Flouride	Removed	No Further Action	Decontaminated SWMU Component
8/21-158	Ind. Wastewater/Flouride	Removed	No Further Action	Decontaminated SWMU Component
8/21-159	Ind. Wastewater/Flouride	Removed	No Further Action	Decontaminated SWMU Component
8/21-160	Ind. Wastewater/Flouride	Removed	No Further Action	Decontaminated SWMU Component
8/21-161	Ind. Wastewater/Flouride	Removed	No Further Action	Decontaminated SWMU Component
8/21-162	Ind. Wastewater/Flouride	Removed	No Further Action	Decontaminated SWMU Component
8/21-163	Ind. Wastewater/Flouride	Removed	No Further Action	Decontaminated SWMU Component
8/21-164	Ind. Wastewater/Flouride	Removed	No Further Action	Decontaminated SWMU Component
8/21-165	Ind. Wastewater/Flouride	Removed	No Further Action	Decontaminated SWMU Component
8/21-166	Ind. Wastewater/Flouride	Removed	No Further Action	Decontaminated SWMU Component
8/21-167	Ind. Wastewater/Flouride	Removed	No Further Action	Decontaminated SWMU Component
8/21-168	Ind. Wastewater/Flouride	Removed	No Further Action	Decontaminated SWMU Component
8/21-169	Ind. Wastewater/Flouride	Removed	No Further Action	Decontaminated SWMU Component

**iPark 84**  
**East Fishkill, New York**

**Table 2**  
**Summary of Post-Decontamination Testing Results**  
**Building 330C**

Sample ID#	DESCRIPTION	STATUS	RCRA STATUS	NOTES
8/21-170	Ind. Wastewater/Flouride	Removed	No Further Action	Decontaminated SWMU Component
8/21-171	Ind. Wastewater/Flouride	Removed	No Further Action	Decontaminated SWMU Component
8/21-172	Ind. Wastewater/Flouride	Removed	No Further Action	Decontaminated SWMU Component
8/21-173	Ind. Wastewater/Flouride	Removed	No Further Action	Decontaminated SWMU Component
8/21-174	Ind. Wastewater/Flouride	Removed	No Further Action	Decontaminated SWMU Component
8/21-175	Ind. Wastewater/Flouride	Removed	No Further Action	Decontaminated SWMU Component
8/21-176	Ind. Wastewater/Flouride	Removed	No Further Action	Decontaminated SWMU Component
8/21-177	Ind. Wastewater/Flouride	Removed	No Further Action	Decontaminated SWMU Component
8/21-178	Ind. Wastewater/Flouride	Removed	No Further Action	Decontaminated SWMU Component
8/21-179	Ind. Wastewater/Flouride	Removed	No Further Action	Decontaminated SWMU Component
8/21-180	Ind. Wastewater/Flouride	Removed	No Further Action	Decontaminated SWMU Component
8/21-181	Ind. Wastewater/Flouride	Removed	No Further Action	Decontaminated SWMU Component
8/21-182	Ind. Wastewater/Flouride	Removed	No Further Action	Decontaminated SWMU Component
8/21-183	Ind. Wastewater/Flouride	Removed	No Further Action	Decontaminated SWMU Component
8/21-184	Ind. Wastewater/Flouride	Removed	No Further Action	Decontaminated SWMU Component
8/21-185	Ind. Wastewater/Flouride	Removed	No Further Action	Decontaminated SWMU Component
8/21-186	Ind. Wastewater/Flouride	Removed	No Further Action	Decontaminated SWMU Component
8/21-187	Ind. Wastewater/Flouride	Removed	No Further Action	Decontaminated SWMU Component
8/21-188	Ind. Wastewater/Flouride	Removed	No Further Action	Decontaminated SWMU Component
8/21-189	Ind. Wastewater/Flouride	Removed	No Further Action	Decontaminated SWMU Component
8/21-190	Ind. Wastewater/Flouride	Removed	No Further Action	Decontaminated SWMU Component
8/21-191	Ind. Wastewater/Flouride	Removed	No Further Action	Decontaminated SWMU Component
8/21-192	Ind. Wastewater/Flouride	Removed	No Further Action	Decontaminated SWMU Component
8/21-193	Ind. Wastewater/Flouride	Removed	No Further Action	Decontaminated SWMU Component
8/21-194	Ind. Wastewater/Flouride	Removed	No Further Action	Decontaminated SWMU Component
8/21-195	Ind. Wastewater/Flouride	Removed	No Further Action	Decontaminated SWMU Component
8/21-196	Ind. Wastewater/Flouride	Removed	No Further Action	Decontaminated SWMU Component
8/21-197	Ind. Wastewater/Flouride	Removed	No Further Action	Decontaminated SWMU Component
8/21-198	Ind. Wastewater/Flouride	Removed	No Further Action	Decontaminated SWMU Component
8/21-199	Ind. Wastewater/Flouride	Removed	No Further Action	Decontaminated SWMU Component
8/21-200	Ind. Wastewater/Flouride	Removed	No Further Action	Decontaminated SWMU Component
8/21-201	Ind. Wastewater/Flouride	Removed	No Further Action	Decontaminated SWMU Component
8/21-202	Ind. Wastewater/Flouride	Removed	No Further Action	Decontaminated SWMU Component

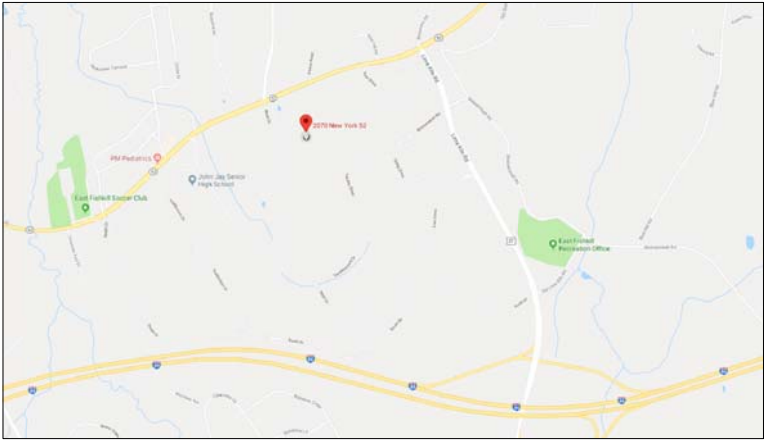
**iPark 84  
East Fishkill, New York**

**Table 2  
Summary of Post-Decontamination Testing Results  
Building 330C**

<b>Sample ID#</b>	<b>DESCRIPTION</b>	<b>STATUS</b>	<b>RCRA STATUS</b>	<b>NOTES</b>
8/21-203	Ind. Wastewater/Flouride	Removed	No Further Action	Decontaminated SWMU Component
8/21-204	Ind. Wastewater/Flouride	Removed	No Further Action	Decontaminated SWMU Component
8/21-205	Ind. Wastewater/Flouride	Removed	No Further Action	Decontaminated SWMU Component
8/21-206	Ind. Wastewater/Flouride	Removed	No Further Action	Decontaminated SWMU Component
8/21-207	Ind. Wastewater/Flouride	Removed	No Further Action	Decontaminated SWMU Component
8/21-208	Ind. Wastewater/Flouride	Removed	No Further Action	Decontaminated SWMU Component
8/21-209	Ind. Wastewater/Flouride	Removed	No Further Action	Decontaminated SWMU Component

## **Appendix A**

### **Site Plans**



## SITE LOCATION

NOT TO SCALE

SOURCE: GOOGLEMAPS.COM



## LEGEND


- PROPERTY LINE
- PROPOSED WORK AREA

SITE BASEMAP: CHAZAN ENGINEERING, LAND SURVEYING & LANDSCAPE ARCHITECTURE CO., D.P.C. POUGHKEEPSIE, NY (XBASE-SVY\_51421-00.DWG 8/10/15); PARCELS: XSUBD\_51539-00.DWG.  
OFFSITE BASEMAP: "GROUNDWATER MONITORING BASEMAP", IBM EAST FISHKILL FACILITY (8718NEW.DWG, ORIGINAL DATE 12/21/98).  
TOPOGRAPHY: PHOTOGRAMMETRY BY GOLDEN AERIAL SURVEYS, INC., NEWTON, CT (3/3/1987).  
CONTOUR INTERVAL: 1 FOOT (HORIZONTAL DATUM BASED UPON IBM EAST FISHKILL COORDINATE SYSTEM; VERTICAL DATUM: BASED UPON NATIONAL GEODETIC VERTICAL DATUM OF 1929).  
HORIZONTAL ACCURACY: 90% OF ALL DETAIL, FIELD CHECKED, WILL BE WITHIN +/- 1.0 FOOT, THE REMAINING 10% OF DETAIL, WILL BE WITHIN +/- 2.0 FEET OF ITS TRUE POSITION.  
VERTICAL ACCURACY: 90% OF ALL CONTOURS, FIELD CHECKED, WILL BE WITHIN +/- 0.5 FOOT, THE REMAINING 10% OF CONTOURS, FIELD CHECKED, WILL BE WITHIN +/- 1.0 FEET.

## SITE PLAN

NOT TO SCALE

SOURCE: GOOGLEMAPS.COM



WALDEN ENVIRONMENTAL ENGINEERING, PLLC

iPARK 84 CAMPUS, 200 NORTH DRIVE, SUITE #108

HOPEWELL JUNCTION, NEW YORK 12533

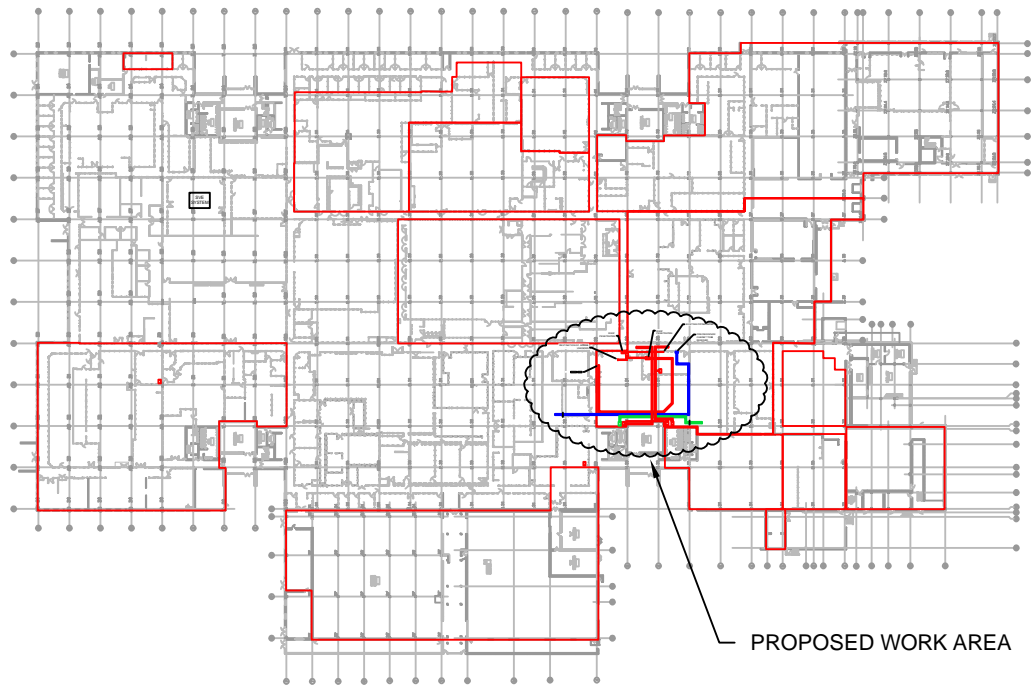
P: (845) 253-8025; (516) 624-7200

F: (516) 624-3219

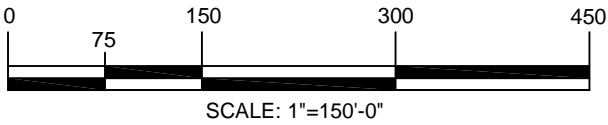
Walden Environmental Engineering

[www.waldenenvironmentalengineering.com](http://www.waldenenvironmentalengineering.com)

NO		DATE	REVISION	COMMENTS	FOR:	DRAWING TITLE:			DRAWING NO:		ISSUED	
0		4/23/19	WORK PLAN FOR NYSDEC/ NYSDOH REVIEW									
					iPARK CAMPUS		2070 ROUTE 52		HOPEWELL JUNCTION, NEW YORK			
					DESIGNED BY: MCT/EJK		DRAWN BY: EJK		JOB NO: iPARK0118.30		DATE: 04/12/2019	
					APPROVED BY: JMH		SCALE: AS NOTED		CAD FILE NAME: Z:\iPark0118\iPark0118.30 - Bldg 330C SWMU Removal\ACAD\DRAW - More Good Expansion SWMU LOCATIONS Sheet 1.dwg		SHEET NO: 1 OF 3	
											1	
											0	

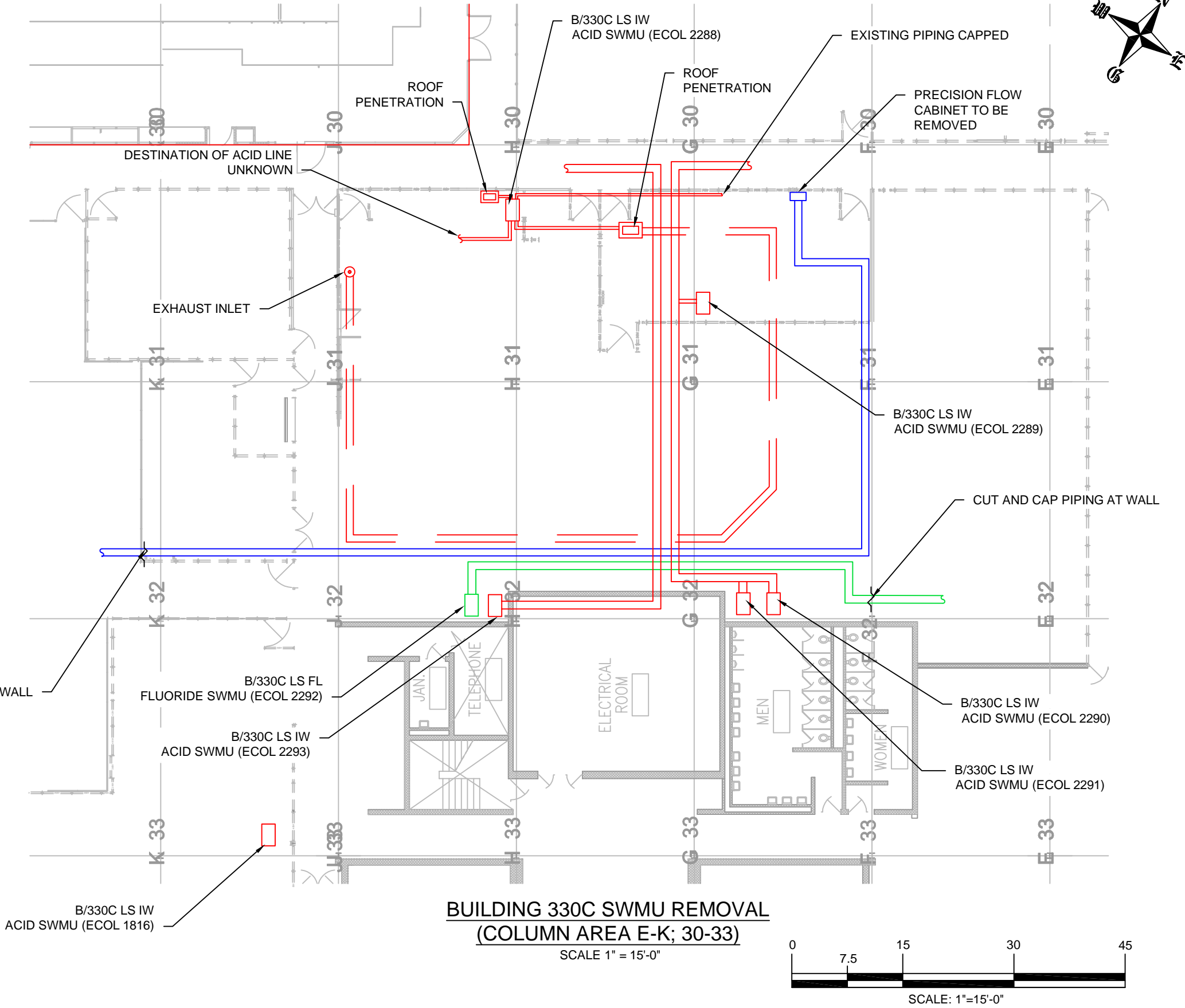


SITE PLAN  
SCALE 1" = 150'-0"

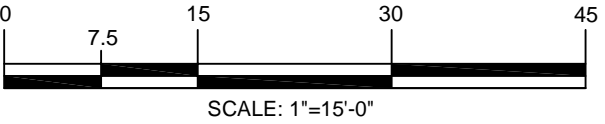


LEGEND

- SWMU LOCATIONS
- ROOF PENETRATION
- FLUORIDE/ HEAVY METAL WASTEWATER TRANSFER PIPING
- ACID PIPING/INDUSTRIAL WASTE TRANSFER PIPING
- ACID PIPING/INDUSTRIAL WASTE VENT EXHAUST PIPING (TO BE REMOVED)
- TOXIC EXHAUST DUCT AND ASSOCIATED BRANCHES (TO BE REMOVED)



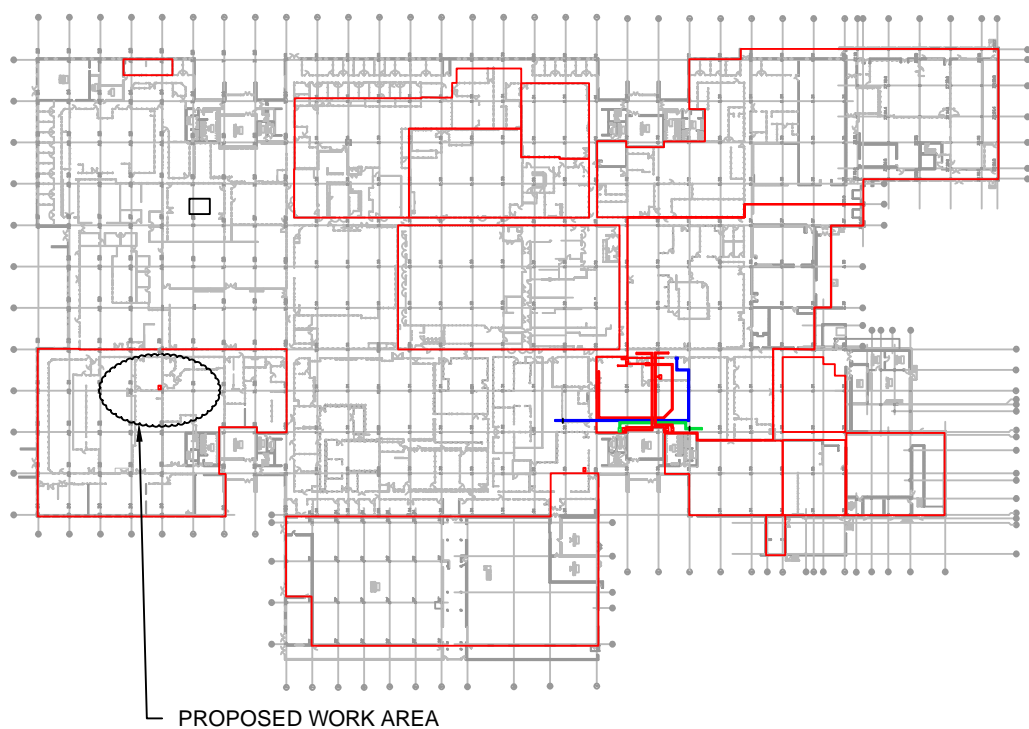
BUILDING 330C SWMU REMOVAL  
(COLUMN AREA E-K; 30-33)  
SCALE 1" = 15'-0"



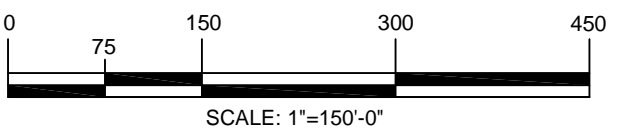
		REVISION
NO	DATE	COMMENTS
0	4/23/19	WORK PLAN FOR NYSDEC/ NYSDOH REVIEW

FOR:	
iPARK CAMPUS 2070 ROUTE 52 HOPEWELL JUNCTION, NEW YORK	
DESIGNED BY: MCT/EJK	DRAWN BY: EJK
APPROVED BY: JMH	SCALE: AS NOTED

DRAWING TITLE:	DRAWING NO:	ISSUED
SWMU REMOVAL (COLUMN AREA E-K; 30-33) BUILDING 330C SWMU REMOVAL PLAN	2	4/23/2019
		REVISION NC
JOB NO: iPARK0118.30   DATE: 4/12/19   11x17	SHEET NO: 2 OF 3	0
CAD FILE NAME: Z:\iPark0118\iPark0118.30 Bldg 330C SWMU Removal\ACAD\iDRAFT - More Good Expansion SWMU LOCATIONS sheet 2.dwg		

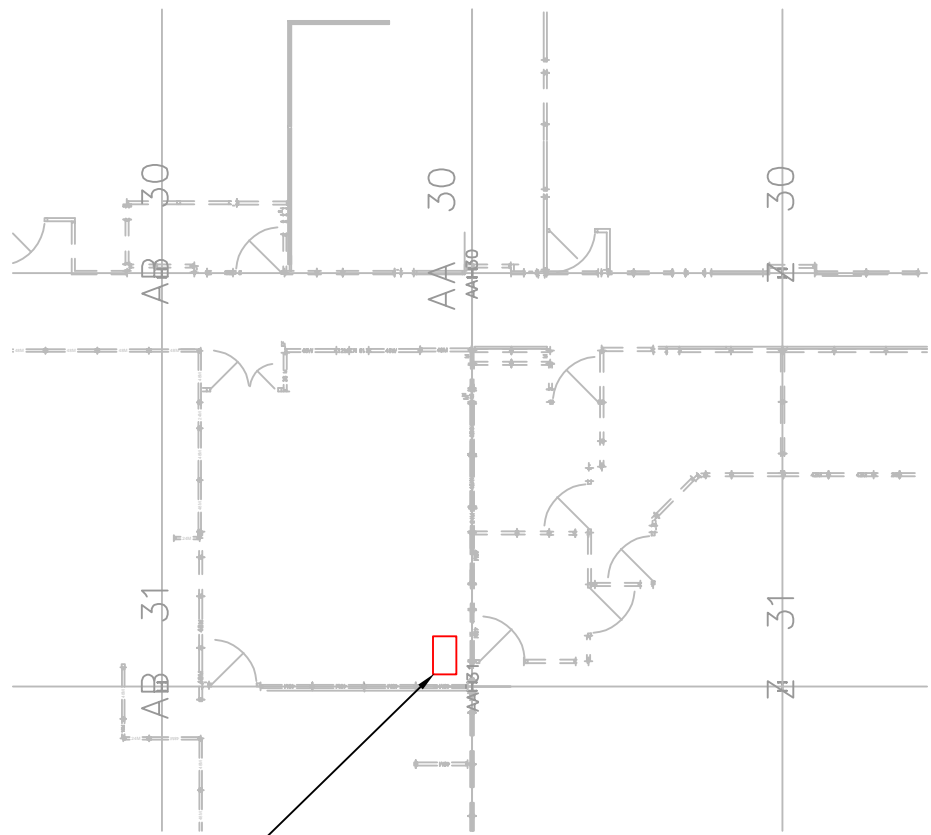


**SITE PLAN**  
SCALE 1" = 150'-0"



**LEGEND**

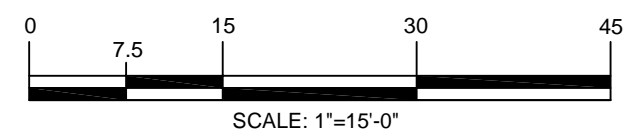
- SWMU LOCATIONS
- ROOF PENETRATION
- FLUORIDE/ HEAVY METAL WASTEWATER TRANSFER PIPING
- ACID PIPING/INDUSTRIAL WASTE TRANSFER PIPING
- ACID PIPING/INDUSTRIAL WASTE VENT EXHAUST PIPING (TO BE REMOVED)
- TOXIC EXHAUST DUCT AND ASSOCIATED BRANCHES (TO BE REMOVED)




B/330C LS IW  
ACID SWMU (ECOL 2255)

**BUILDING 330C SWMU REMOVAL  
(COLUMN AREA AB-Z; 30-31)**

SCALE 1" = 15'-0"





WALDEN ENVIRONMENTAL ENGINEERING, PLLC

iPARK 84 CAMPUS, 200 NORTH DRIVE, SUITE #108

HOPEWELL JUNCTION, NEW YORK 12533

P: (845) 253-8025; (516) 624-7200

F: (516) 624-3219

Walden Environmental Engineering [WWW.WALDENENVIRONMENTALENGINEERING.COM](http://WWW.WALDENENVIRONMENTALENGINEERING.COM)

		REVISION
NO	DATE	COMMENTS
0	4/23/19	WORK PLAN FOR NYSDEC/ NYSDOH REVIEW

FOR:

iPARK CAMPUS

2070 ROUTE 52

HOPEWELL JUNCTION, NEW YORK

DESIGNED BY: MCT/EJK

DRAWN BY: EJK

APPROVED BY: JMH

SCALE: AS NOTED

DRAWING TITLE:

**SWMU REMOVAL (COLUMN  
AREA AB-Z; 30-31)**

BUILDING 330C SWMU REMOVAL PLAN

JOB NO: iPARK0118.30

DATE: 4/12/19

11x17

SHEET NO: 3 OF 3

DRAWING NO:

3

ISSUED  
4/23/2019

REVISION NO:

0




## **Appendix B**

### **SWMU Checklists**



SOLID WASTE MANAGEMENT UNIT CLOSURE CHECKLIST							
Site Name & Location	IBM/GF, East Fishkill, NY	Building	330C	Column References	H-32	Project Area	MORE GOOD EXPANSION
SWMU ID:	B/330C LS FL ECOL 2292						
SWMU Description:	FLUORIDE LIFT STATION						
SWMU Component(s):	PIPING, PIPING SECONDARY CONTAINMENT, PUMPS, MOTOR, SUMP TANK, SUMP TANK SECONDARY CONTAINMENT, PIPING CONTAINMENT TROUGHS, MISC. ELECTRICAL EQUIPMENT						
Decommissioning Record							
Environmental Items:	Yes	No	Not Required/None	Test and Inspection Results Pass/Fail	Disposal Facility Name	Recycle Facility Name	
1. Pictures Taken Pre-Decontamination	X						
2. Pictures Taken Post-Decontamination	X						
3. Fluids Flushed and Drained	X						
4. Solid Residuals Removed	X			PASS			
5. Tank/Pipes Visually Inspected for Integrity	X			PASS			
6. Tank/Pipes Sampled for Surface pH	X						
7. Tank/Pipes Sampled for Other Waste Constituents	X						
8. Spill Containment Pit/Trench Visually Inspected for Integrity	X			PASS			
9. Spill Containment Pit/Trench Sampled for Surface pH	X			PASS			
10. Spill Containment Pit/Trench Sampled for Other Constituents	X						
11. SWMU Tank/Pipes Approved and Removed From Facility	X						
12. SWMU Containment Pit/Trench Approved for Backfill in Place			X				
Closure and Removal Dates							
1. Date Tank/Pipes Verified Clean for Scrap Recycling				8/21/2019			
2. Date Containment Pit/Trench Verified Clean				8/21/2019			
3. SWMU Status (Removed, Component Removed, Closed in Place)		COMPONENT REMOVED	Status Change Date:	N/A			
Notes:							
Signature							
Walden Representative	LOUIS GOLDSTEIN						


SOLID WASTE MANAGEMENT UNIT CLOSURE CHECKLIST							
Site Name & Location	IBM/GF, East Fishkill, NY	Building	330C	Column References	K-33	Project Area	MORE GOOD EXPANSION
SWMU ID:	B/330C LS IW ECOL 1816						
SWMU Description:	ACID LIFT STATION						
SWMU Component(s):	PIPING, PIPING SECONDARY CONTAINMENT, PUMPS, MOTOR, SUMP TANK, SUMP TANK SECONDARY CONTAINMENT, PIPING CONTAINMENT TROUGHS, MISC. ELECTRICAL EQUIPMENT						
Decommissioning Record							
Environmental Items:	Yes	No	Not Required/None	Test and Inspection Results Pass/Fail	Disposal Facility Name	Recycle Facility Name	
1. Pictures Taken Pre-Decontamination	X						
2. Pictures Taken Post-Decontamination	X						
3. Fluids Flushed and Drained	X						
4. Solid Residuals Removed	X			PASS			
5. Tank/Pipes Visually Inspected for Integrity	X			PASS			
6. Tank/Pipes Sampled for Surface pH	X						
7. Tank/Pipes Sampled for Other Waste Constituents	X						
8. Spill Containment Pit/Trench Visually Inspected for Integrity	X			PASS			
9. Spill Containment Pit/Trench Sampled for Surface pH	X			PASS			
10. Spill Containment Pit/Trench Sampled for Other Constituents	X						
11. SWMU Tank/Pipes Approved and Removed From Facility	X						
12. SWMU Containment Pit/Trench Approved for Backfill in Place			X				
Closure and Removal Dates							
1. Date Tank/Pipes Verified Clean for Scrap Recycling				8/21/2019			
2. Date Containment Pit/Trench Verified Clean				8/21/2019			
3. SWMU Status (Removed, Component Removed, Closed in Place)		COMPONENT REMOVED*	Status Change Date:	N/A			
Notes:	*See SWMU Closure Activities (August 2019) section within certification letter. A minimal amount of piping associated with LS IW ECOL 1816 remained in place above the ceiling line due to obstructions above the ceiling height.						
Signature							
Walden Representative	LOUIS GOLDSTEIN						

SOLID WASTE MANAGEMENT UNIT CLOSURE CHECKLIST							
Site Name & Location	IBM/GF, East Fishkill, NY	Building	330C	Column References	AA-30	Project Area	MORE GOOD EXPANSION
SWMU ID:	B/330C LS IW ECOL 2255						
SWMU Description:	ACID LIFT STATION						
SWMU Component(s):	PIPING, PIPING SECONDARY CONTAINMENT, PUMPS, MOTOR, SUMP TANK, SUMP TANK SECONDARY CONTAINMENT, PIPING CONTAINMENT TROUGHS, MISC. ELECTRICAL EQUIPMENT						
Decommissioning Record							
Environmental Items:	Yes	No	Not Required/None	Test and Inspection Results Pass/Fail	Disposal Facility Name	Recycle Facility Name	
1. Pictures Taken Pre-Decontamination	X						
2. Pictures Taken Post-Decontamination	X						
3. Fluids Flushed and Drained	X						
4. Solid Residuals Removed	X			PASS			
5. Tank/Pipes Visually Inspected for Integrity	X			PASS			
6. Tank/Pipes Sampled for Surface pH	X						
7. Tank/Pipes Sampled for Other Waste Constituents	X						
8. Spill Containment Pit/Trench Visually Inspected for Integrity	X			PASS			
9. Spill Containment Pit/Trench Sampled for Surface pH	X			PASS			
10. Spill Containment Pit/Trench Sampled for Other Constituents	X						
11. SWMU Tank/Pipes Approved and Removed From Facility	X						
12. SWMU Containment Pit/Trench Approved for Backfill in Place			X				
Closure and Removal Dates							
1. Date Tank/Pipes Verified Clean for Scrap Recycling				8/21/2019			
2. Date Containment Pit/Trench Verified Clean				8/21/2019			
3. SWMU Status (Removed, Component Removed, Closed in Place)		COMPONENT REMOVED	Status Change Date:	N/A			
Notes:							
Signature	<i>Louis Goldstein</i>						
Walden Representative	LOUIS GOLDSTEIN						



SOLID WASTE MANAGEMENT UNIT CLOSURE CHECKLIST							
Site Name & Location	IBM/GF, East Fishkill, NY	Building	330C	Column References	H-30	Project Area	MORE GOOD EXPANSION
SWMU ID:		B/330C LS IW ECOL 2288					
SWMU Description:		ACID LIFT STATION					
SWMU Component(s):		PIPING, PIPING SECONDARY CONTAINMENT, PUMPS, MOTOR, SUMP TANK, SUMP TANK SECONDARY CONTAINMENT, PIPING CONTAINMENT TROUGHS, MISC. ELECTRICAL EQUIPMENT					
Decommissioning Record							
Environmental Items:	Yes	No	Not Required/None	Test and Inspection Results Pass/Fail	Disposal Facility Name	Recycle Facility Name	
1. Pictures Taken Pre-Decontamination	X						
2. Pictures Taken Post-Decontamination	X						
3. Fluids Flushed and Drained	X						
4. Solid Residuals Removed	X			PASS			
5. Tank/Pipes Visually Inspected for Integrity	X			PASS			
6. Tank/Pipes Sampled for Surface pH	X						
7. Tank/Pipes Sampled for Other Waste Constituents	X						
8. Spill Containment Pit/Trench Visually Inspected for Integrity	X			PASS			
9. Spill Containment Pit/Trench Sampled for Surface pH	X			PASS			
10. Spill Containment Pit/Trench Sampled for Other Constituents	X						
11. SWMU Tank/Pipes Approved and Removed From Facility	X						
12. SWMU Containment Pit/Trench Approved for Backfill in Place			X				
Closure and Removal Dates							
1. Date Tank/Pipes Verified Clean for Scrap Recycling				8/21/2019			
2. Date Containment Pit/Trench Verified Clean				8/21/2019			
3. SWMU Status (Removed, Component Removed, Closed in Place)		COMPONENT REMOVED	Status Change Date:	N/A			
Notes:							
Signature		<i>Louis Goldstein</i>					
Walden Representative		LOUIS GOLDSTEIN					




SOLID WASTE MANAGEMENT UNIT CLOSURE CHECKLIST							
Site Name & Location	IBM/GF, East Fishkill, NY	Building	330C	Column References	G-31	Project Area	MORE GOOD EXPANSION
SWMU ID:	B/330C LS IW ECOL 2289						
SWMU Description:	ACID LIFT STATION						
SWMU Component(s):	PIPING, PIPING SECONDARY CONTAINMENT, PUMPS, MOTOR, SUMP TANK, SUMP TANK SECONDARY CONTAINMENT, PIPING CONTAINMENT TROUGHS, MISC. ELECTRICAL EQUIPMENT						
Decommissioning Record							
Environmental Items:	Yes	No	Not Required/None	Test and Inspection Results Pass/Fail	Disposal Facility Name	Recycle Facility Name	
1. Pictures Taken Pre-Decontamination	X						
2. Pictures Taken Post-Decontamination	X						
3. Fluids Flushed and Drained	X						
4. Solid Residuals Removed	X			PASS			
5. Tank/Pipes Visually Inspected for Integrity	X			PASS			
6. Tank/Pipes Sampled for Surface pH	X						
7. Tank/Pipes Sampled for Other Waste Constituents	X						
8. Spill Containment Pit/Trench Visually Inspected for Integrity	X			PASS			
9. Spill Containment Pit/Trench Sampled for Surface pH	X			PASS			
10. Spill Containment Pit/Trench Sampled for Other Constituents	X						
11. SWMU Tank/Pipes Approved and Removed From Facility	X						
12. SWMU Containment Pit/Trench Approved for Backfill in Place			X				
Closure and Removal Dates							
1. Date Tank/Pipes Verified Clean for Scrap Recycling				8/21/2019			
2. Date Containment Pit/Trench Verified Clean				8/21/2019			
3. SWMU Status (Removed, Component Removed, Closed in Place)		COMPONENT REMOVED	Status Change Date:	N/A			
Notes:							
Signature							
Walden Representative	LOUIS GOLDSTEIN						



SOLID WASTE MANAGEMENT UNIT CLOSURE CHECKLIST							
Site Name & Location	IBM/GF, East Fishkill, NY	Building	330C	Column References	G-32	Project Area	MORE GOOD EXPANSION
SWMU ID:	B/330C LS IW ECOL 2290						
SWMU Description:	ACID LIFT STATION						
SWMU Component(s):	PIPING, PIPING SECONDARY CONTAINMENT, PUMPS, MOTOR, SUMP TANK, SUMP TANK SECONDARY CONTAINMENT, PIPING CONTAINMENT TROUGHS, MISC. ELECTRICAL EQUIPMENT						
Decommissioning Record							
Environmental Items:	Yes	No	Not Required/None	Test and Inspection Results Pass/Fail	Disposal Facility Name	Recycle Facility Name	
1. Pictures Taken Pre-Decontamination	X						
2. Pictures Taken Post-Decontamination	X						
3. Fluids Flushed and Drained	X						
4. Solid Residuals Removed	X			PASS			
5. Tank/Pipes Visually Inspected for Integrity	X			PASS			
6. Tank/Pipes Sampled for Surface pH	X						
7. Tank/Pipes Sampled for Other Waste Constituents	X						
8. Spill Containment Pit/Trench Visually Inspected for Integrity	X			PASS			
9. Spill Containment Pit/Trench Sampled for Surface pH	X			PASS			
10. Spill Containment Pit/Trench Sampled for Other Constituents	X						
11. SWMU Tank/Pipes Approved and Removed From Facility	X						
12. SWMU Containment Pit/Trench Approved for Backfill in Place			X				
Closure and Removal Dates							
1. Date Tank/Pipes Verified Clean for Scrap Recycling	8/21/2019						
2. Date Containment Pit/Trench Verified Clean	8/21/2019						
3. SWMU Status (Removed, Component Removed, Closed in Place)	COMPONENT REMOVED	Status Change Date:	N/A				
Notes:							
Signature	<i>Louis Goldstein</i>						
Walden Representative	LOUIS GOLDSTEIN						





SOLID WASTE MANAGEMENT UNIT CLOSURE CHECKLIST							
Site Name & Location	IBM/GF, East Fishkill, NY	Building	330C	Column References	G-32	Project Area	MORE GOOD EXPANSION
SWMU ID:		B/330C LS IW ECOL 2291					
SWMU Description:		ACID LIFT STATION					
SWMU Component(s):		PIPING, PIPING SECONDARY CONTAINMENT, PUMPS, MOTOR, SUMP TANK, SUMP TANK SECONDARY CONTAINMENT, PIPING CONTAINMENT TROUGHS, MISC. ELECTRICAL EQUIPMENT					
Decommissioning Record							
Environmental Items:	Yes	No	Not Required/None	Test and Inspection Results Pass/Fail	Disposal Facility Name	Recycle Facility Name	
1. Pictures Taken Pre-Decontamination	X						
2. Pictures Taken Post-Decontamination	X						
3. Fluids Flushed and Drained	X						
4. Solid Residuals Removed	X			PASS			
5. Tank/Pipes Visually Inspected for Integrity	X			PASS			
6. Tank/Pipes Sampled for Surface pH	X						
7. Tank/Pipes Sampled for Other Waste Constituents	X						
8. Spill Containment Pit/Trench Visually Inspected for Integrity	X			PASS			
9. Spill Containment Pit/Trench Sampled for Surface pH	X			PASS			
10. Spill Containment Pit/Trench Sampled for Other Constituents	X						
11. SWMU Tank/Pipes Approved and Removed From Facility	X						
12. SWMU Containment Pit/Trench Approved for Backfill in Place			X				
Closure and Removal Dates							
1. Date Tank/Pipes Verified Clean for Scrap Recycling				8/21/2019			
2. Date Containment Pit/Trench Verified Clean				8/21/2019			
3. SWMU Status (Removed, Component Removed, Closed in Place)		COMPONENT REMOVED	Status Change Date:	N/A			
Notes:							
Signature							
Walden Representative	LOUIS GOLDSTEIN						





SOLID WASTE MANAGEMENT UNIT CLOSURE CHECKLIST									
Site Name & Location	IBM/GF, East Fishkill, NY	Building	330C	Column References	H-32	Project Area	MORE GOOD EXPANSION		
SWMU ID:		B/330C LS IW ECOL 2293							
SWMU Description:		ACID LIFT STATION							
SWMU Component(s):		PIPING, PIPING SECONDARY CONTAINMENT, PUMPS, MOTOR, SUMP TANK, SUMP TANK SECONDARY CONTAINMENT, PIPING CONTAINMENT TROUGHS, MISC. ELECTRICAL EQUIPMENT							
Decommissioning Record									
Environmental Items:				Yes	No	Not Required/None	Test and Inspection Results Pass/Fail	Disposal Facility Name	Recycle Facility Name
1. Pictures Taken Pre-Decontamination				X					
2. Pictures Taken Post-Decontamination				X					
3. Fluids Flushed and Drained				X					
4. Solid Residuals Removed				X			PASS		
5. Tank/Pipes Visually Inspected for Integrity				X			PASS		
6. Tank/Pipes Sampled for Surface pH				X					
7. Tank/Pipes Sampled for Other Waste Constituents				X					
8. Spill Containment Pit/Trench Visually Inspected for Integrity				X			PASS		
9. Spill Containment Pit/Trench Sampled for Surface pH				X			PASS		
10. Spill Containment Pit/Trench Sampled for Other Constituents				X					
11. SWMU Tank/Pipes Approved and Removed From Facility				X					
12. SWMU Containment Pit/Trench Approved for Backfill in Place						X			
Closure and Removal Dates									
1. Date Tank/Pipes Verified Clean for Scrap Recycling					8/21/2019				
2. Date Containment Pit/Trench Verified Clean					8/21/2019				
3. SWMU Status (Removed, Component Removed, Closed in Place)			COMPONENT REMOVED	Status Change Date:	N/A				
Notes:									
Signature									
Walden Representative		LOUIS GOLDSTEIN							

## **Appendix C**

### **Site Photos**

## Site Photographs

**Photograph #1**



Setting up Decontamination Area

**Photograph #2**



Acid Lift Station After Removal, Prior to Cleaning

**Photograph #3**



Removed Portions of Exhaust Duct Piping  
Staged for Disposal

**Photograph #4**



Cleaned and Cleared Components in  
Container for Disposal

**Photograph #5**



Secondary Containment Sump Prior to  
Cleaning

**Photograph #6**



Acid Lift Station After Removal, Prior to  
Cleaning



**Photograph #7**



Liquids Being Transferred From Lift Station  
Into Drum for Later Disposal

**Photograph #8**



Workers Disconnecting Piping Sections

**Photograph #9**



Workers Disconnecting SWMU Components

**Photograph #10**



Worker Removing Supports from SWMU

**Photograph #11**



Designated Rinsing Bins for Pipe Sections

**Photograph #12**



Decontaminated Piping Sections Slated for  
Disposal

## **Appendix D**

### **Offsite Disposal Manifests**

(845) 896-6000  
(845) 221-4300

**ROYAL CARTING SERVICE CO.**

Date 8-20-19

P.O.#

High Ground Industrial

IBM EP Bldg # 755

By Sloop Brewing

**WORK ORDER/DELIVERY RECEIPT**

**OPEN CONTAINER REGULATIONS**

AMOUNT \$ 0/c

Open Container Yds. 8 ydf

Closed Container Yds. \_\_\_\_\_

Extra P.U. \_\_\_\_\_

Driver \_\_\_\_\_

I agree to these terms and conditions

Customer Sign \_\_\_\_\_

1. Fill container level with top, overloaded containers will not be picked up.

2. Overweight loads in excess of \_\_\_\_\_ tons will be charged \$ \_\_\_\_\_ per ton.

3. The surcharge for disposal of tires is \$ \_\_\_\_\_, appliances with freon is \$ \_\_\_\_\_ per unit and electronics \$ \_\_\_\_\_ per unit. \$ \_\_\_\_\_ per week rental after \_\_\_\_\_ weeks.

4. **NO HAZARDOUS MATERIALS:** Wet paint, chemicals, asbestos, etc will NOT be accepted. We are required by DEC regulations to report violations, and you will be responsible for any legal and disposal consequence.

**CONTAINER TO BE PLACED ON DRIVEWAYS ONLY.**

**NOT RESPONSIBLE FOR PROPERTY DAMAGE TO LAWNS, LANDSCAPING, OR DRIVEWAYS.**

White/Billing Yellow/Office Pink/Customer

(845) 896-6000  
(845) 221-4300

RT-14

**ROYAL CARTING SERVICE CO.**

Date 8-21-19

WEI

P.O.# 921762

HIGH GROUND INDUSTRIAL LLC

IPARK

**WORK ORDER/DELIVERY RECEIPT**

**OPEN CONTAINER REGULATIONS**

AMOUNT \$ \_\_\_\_\_

Open Container Yds. \_\_\_\_\_

Closed Container Yds. 0/c 8 ydf

Extra P.U. \_\_\_\_\_

Driver \_\_\_\_\_

I agree to these terms and conditions

Customer Sign \_\_\_\_\_

1. Fill container level with top, overloaded containers will not be picked up.

2. Overweight loads in excess of \_\_\_\_\_ tons will be charged \$ \_\_\_\_\_ per ton.

3. The surcharge for disposal of tires is \$ \_\_\_\_\_, appliances with freon is \$ \_\_\_\_\_ per unit and electronics \$ \_\_\_\_\_ per unit. \$ \_\_\_\_\_ per week rental after \_\_\_\_\_ weeks.

4. **NO HAZARDOUS MATERIALS:** Wet paint, chemicals, asbestos, etc will NOT be accepted. We are required by DEC regulations to report violations, and you will be responsible for any legal and disposal consequence.

**CONTAINER TO BE PLACED ON DRIVEWAYS ONLY.**

**NOT RESPONSIBLE FOR PROPERTY DAMAGE TO LAWNS, LANDSCAPING, OR DRIVEWAYS.**

White/Billing Yellow/Office Pink/Customer

(845) 896-6000  
(845) 221-4300

**ROYAL CARTING SERVICE CO.**

Date 8/22/19

P.O.#

921762

High Ground

IBM 755

**WORK ORDER/DELIVERY RECEIPT**

**OPEN CONTAINER REGULATIONS**

AMOUNT \$ \_\_\_\_\_

Open Container Yds. 8 ydf

Closed Container Yds. \_\_\_\_\_

Extra P.U. \_\_\_\_\_

Driver \_\_\_\_\_

I agree to these terms and conditions

Customer Sign \_\_\_\_\_

1. Fill container level with top, overloaded containers will not be picked up.

2. Overweight loads in excess of \_\_\_\_\_ tons will be charged \$ \_\_\_\_\_ per ton.

3. The surcharge for disposal of tires is \$ \_\_\_\_\_, appliances with freon is \$ \_\_\_\_\_ per unit and electronics \$ \_\_\_\_\_ per unit. \$ \_\_\_\_\_ per week rental after \_\_\_\_\_ weeks.

4. **NO HAZARDOUS MATERIALS:** Wet paint, chemicals, asbestos, etc will NOT be accepted. We are required by DEC regulations to report violations, and you will be responsible for any legal and disposal consequence.

**CONTAINER TO BE PLACED ON DRIVEWAYS ONLY.**

**NOT RESPONSIBLE FOR PROPERTY DAMAGE TO LAWNS, LANDSCAPING, OR DRIVEWAYS.**

White/Billing Yellow/Office Pink/Customer

Dutchess County Resource Recovery Agency  
96 Sand Dock Road  
Poughkeepsie, NY 12601

Ticket: 452242  
Date: 8/20/2019  
Time: 08:11:44 - 08:15:29

Customer: ROYAL CARTING  
ROUTE 82,  
P.O. BOX 33  
HOPEWELL JUNCTION, NY 12533-

Scale  
Gross: 59820 LB In Scale INBO  
Tare: 39340 LB Out Manual Wt  
Net: 20480 LB

Truck: ROY225

Comment:

Origin	Materials & Services	Quantity	Unit
Not Applicable	RUBBISH IN	10.24	Ton

Driver:

Deputy Weighmaster:

Scale

Dutchess County Resource Recovery Agency  
96 Sand Dock Road  
Poughkeepsie, NY 12601

Ticket: 452314  
Date: 8/21/2019  
Time: 07:05:58 - 07:06:52

Customer: ROYAL CARTING  
ROUTE 82,  
P.O. BOX 33  
HOPEWELL JUNCTION, NY 12533-  
Truck: RDY225

Scale  
Gross: 59680 LB In Scale INBO  
Tare: 39360 LB Out Manual Wt  
Net: 20320 LB

Comment:

Origin	Materials & Services	Quantity Unit
Not Applicable	RUBBISH IN	10.16 Ton

Driver:

Deputy Weighmaster:

Scale



Dutchess County Resource Recovery Agency  
96 Sand Dock Road  
Poughkeepsie, NY 12601

Ticket: 452379  
Date: 8/22/2019  
Time: 08:23:37 - 08:27:20

Customer: ROYAL CARTING  
ROUTE 82,  
P.O. BOX 33  
HOPEWELL JUNCTION, NY 12533-

Scale  
Gross: 59440 LB In Scale INBO  
Tare: 39060 LB Out Scale OUTB  
Net: 20380 LB

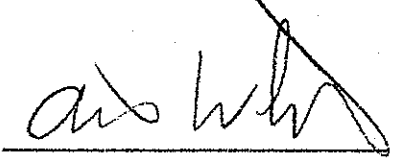
Truck: ROY225

Comment:

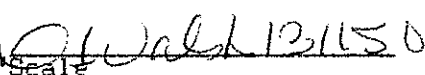
Origin	Materials & Services	Quantity	Unit
--------	----------------------	----------	------

Not Applicable	RUBBISH IN	10.19	Ton
----------------	------------	-------	-----

Driver:



Deputy Weighmaster:

Scale  131150