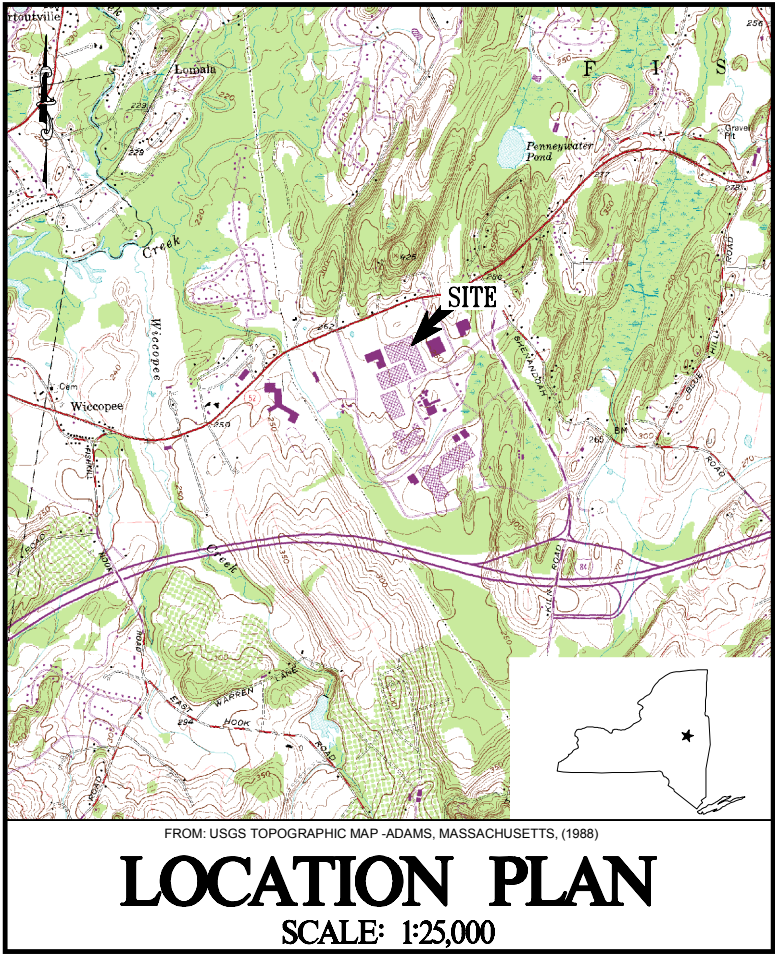


B310/B308 LINKWAY SUBSLAB DEPRESSURIZATION SYSTEM FORMER IBM EAST FISHKILL FACILITY

HOPEWELL JUNCTION, NEW YORK
AUGUST 2015

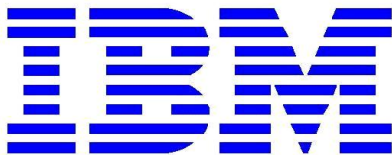
SHEET INDEX

SHEET M-1	SYSTEM LAYOUT
SHEET M-2	VAPOR EXTRACTION DETAILS
SHEET E-1	ELECTRICAL LAYOUT
SHEET E-2	ELECTRICAL LINE DRAWING



DRAFT

PREPARED FOR:



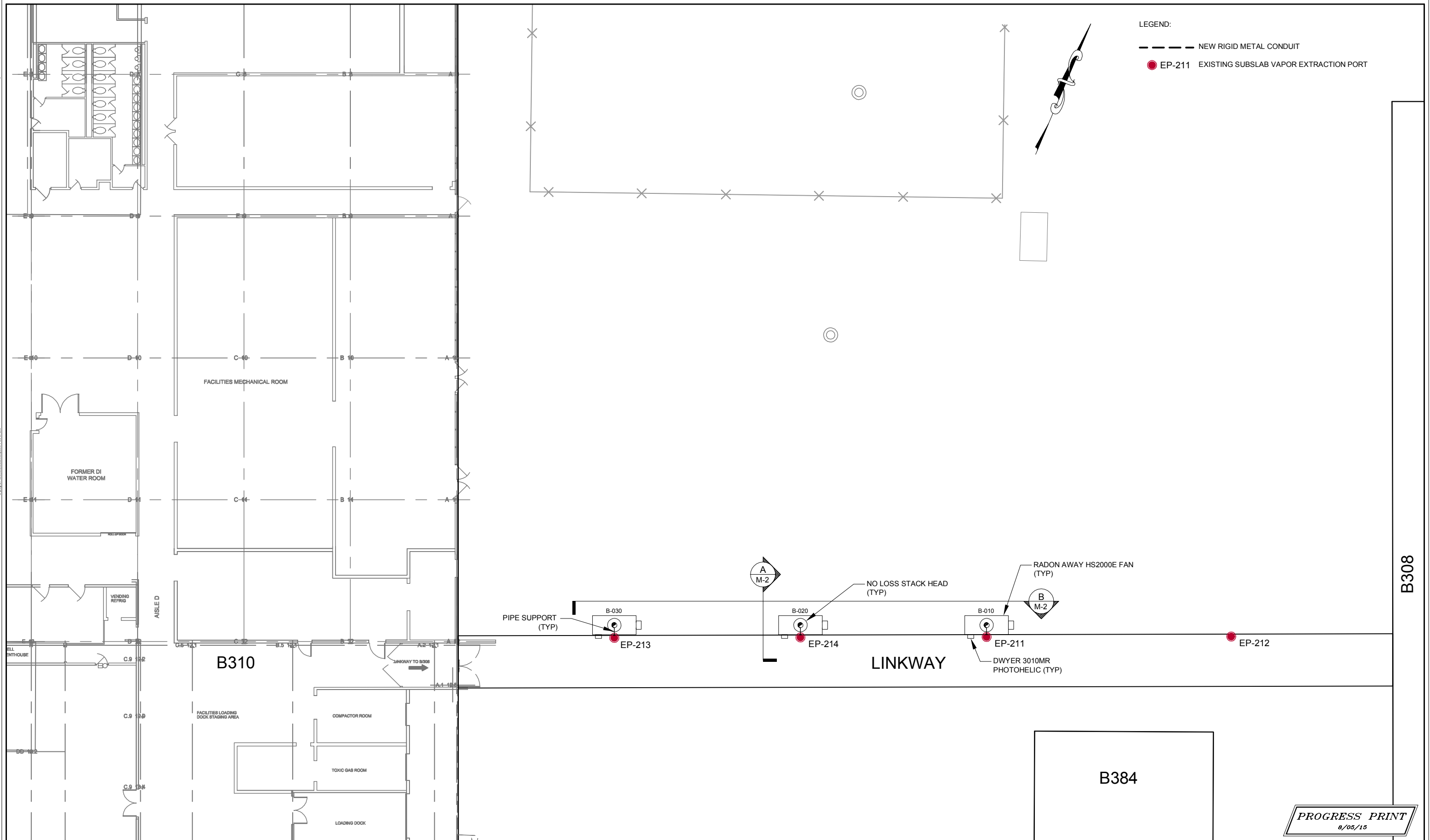
FORMER EAST FISHKILL FACILITY
HOPEWELL JUNCTION, NEW YORK

PREPARED BY:

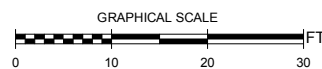


20 FOUNDRY STREET, CONCORD, NEW HAMPSHIRE 03301
(603) 229-1900

FILE: P:\2002\9299\03\Graphics\Filer\GPO\0310-03\08 LinWay\dwg
LAYOUT: M-4



SANBORN ||| HEAD ENGINEERING



DRAFT

[illegible]

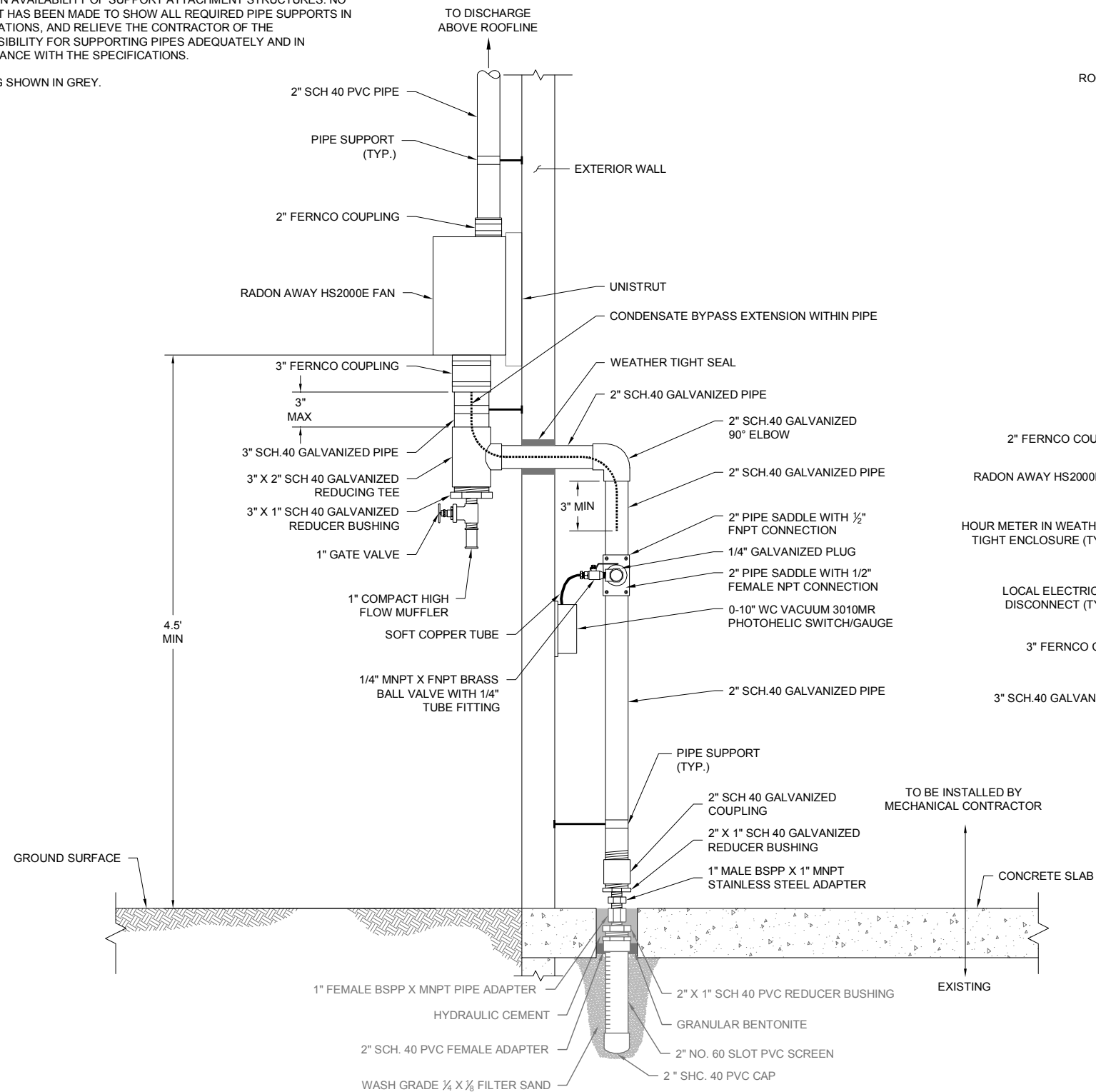
DRAWN BY: D. DOMBROWSKY
DESIGNED BY: J. CORSELLO
REVIEWED BY: S. SOOS
PROJECT MGR: S. SOOS
PIC: D. SHEA
DATE: AUGUST 2015

B310/B308 LINKWAY
SUBSLAB DEPRESSURIZATION SYSTEM
FORMER IBM EAST FISHKILL FACILITY
HOPEWELL JUNCTION, NEW YORK

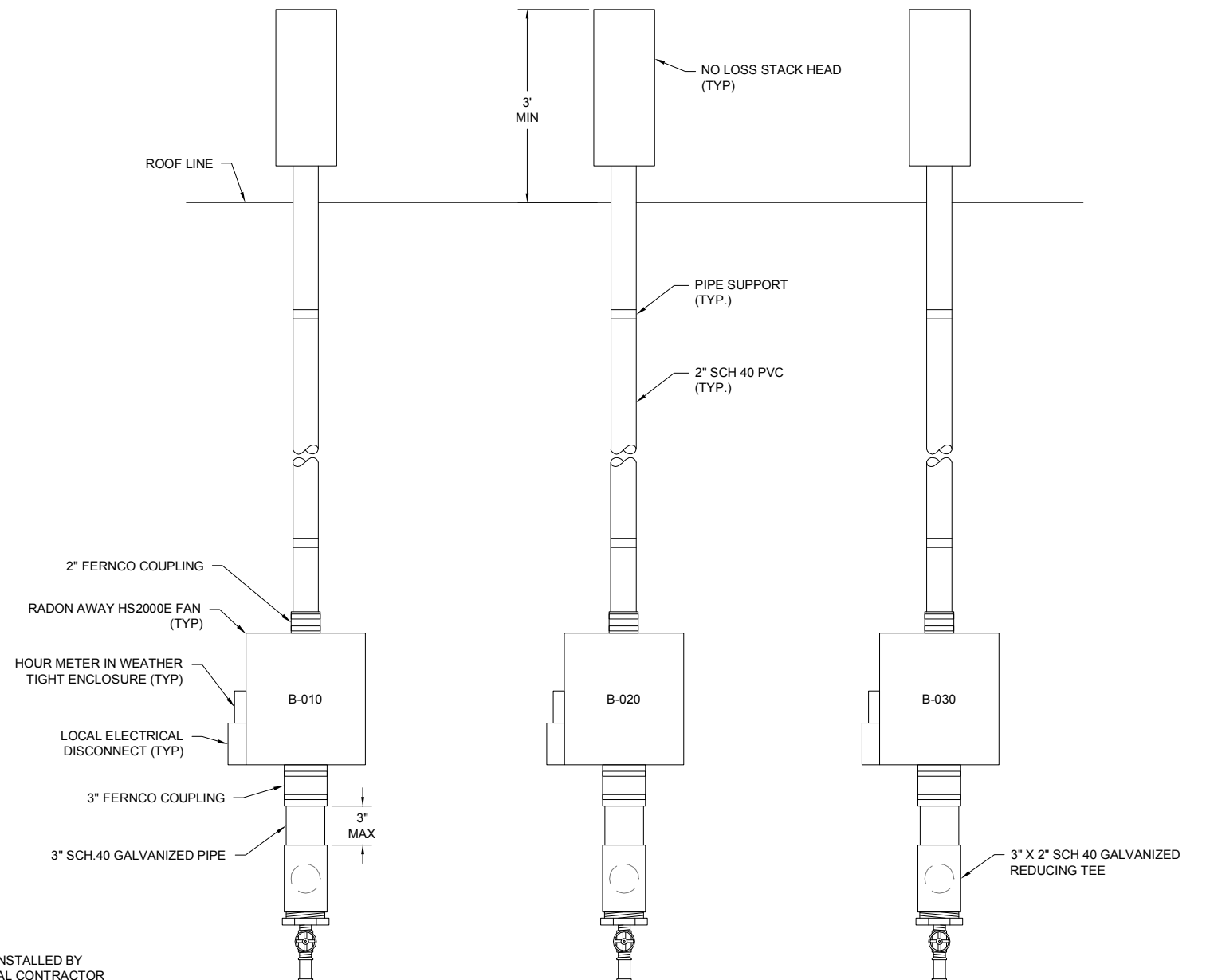
SYSTEM LAYOUT

PROJECT NUMBER:	2999.03
SHEET NUMBER:	M-1

2. EXISTING SHOWN IN GREY.



TYPICAL EXTRACTION PORT RISER SIDE ELEVATION



B BLOWER AND MANIFOLD ELEVATION

SANBORN ||| HEAD ENGINEERING

NOT TO SCALE

DRAFT

NO.	DATE	DESCRIPTION	BY

DRAWN BY: D. DOMBROWSKY
DESIGNED BY: J. CORSELLO
REVIEWED BY: S. SOOS
PROJECT MGR: S. SOOS
PIC: D. SHEA
DATE: AUGUST 2015

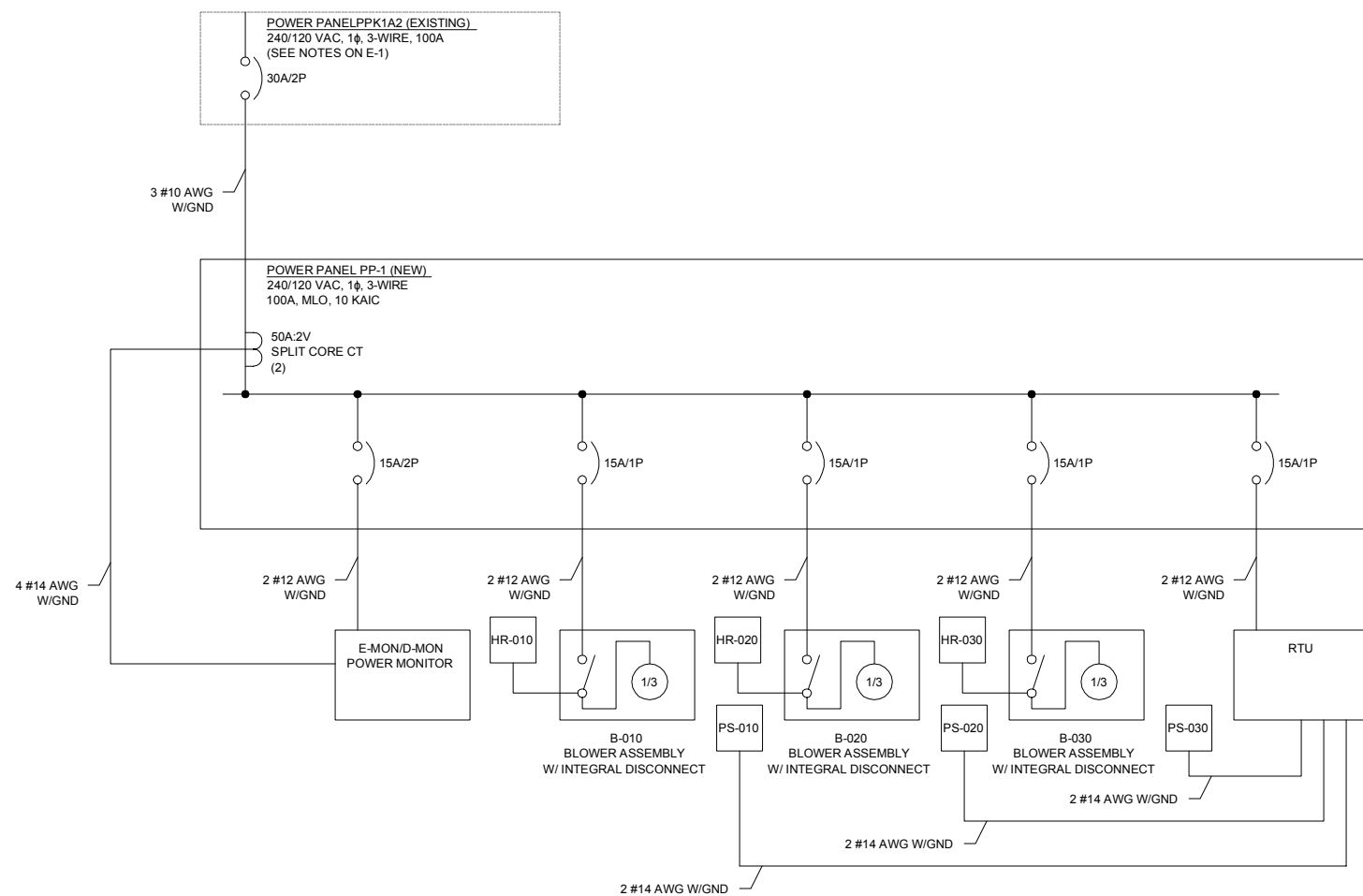
B310/B308 LINKWAY
SUBSLAB DEPRESSURIZATION SYSTEM
FORMER IBM EAST FISHKILL FACILITY
HOPEWELL JUNCTION, NEW YORK

VAPOR EXTRACTION DETAILS

PROJECT NUMBER:	2999.03
SHEET NUMBER:	M-2

PROGRESS PRINT
8/05/15





NOTES:

1. SEE NOTES ON SHEET E-1.

TAGGED EQUIPMENT SUPPLIED AND INSTALLED BY ELECTRICAL CONTRACTOR	
TAG	DESCRIPTION
PPKA12, CKT 18/20-	<u>CIRCUIT BREAKER</u> 30A/2P, 10KAIC - MATCH EXISTING PANEL CIRCUIT BREAKERS
PP-1	<u>POWER PANEL</u> 120/240 VAC, 1Ø, 3-WIRE, 100A MAIN LUG ONLY CIRCUIT BREAKERS AS SHOWN NEMA 3R
E-MON/D-MON POWER MONITOR	<u>SINGLE PHASE, 3 WIRE POWER DEMAND METER</u> E-MON/D-MON CLASS 1000, 120/240 , 1 Ø, 3-WIRE (2) SPLIT-CORE CURRENT TRANSDUCCERS, 50A-2V
RTU	<u>REMOTE TELEMETRY UNIT</u> SENSA PHONE CELL 682 PREASSEMBLED CABINET - 120 VAC POWERED
HR-010, HR-020, HR-030	<u>RUN TIME HOUR METER</u> HONEYWELL MODEL 20028

TAGGED EQUIPMENT SUPPLIED AND INSTALLED BY OTHERS	
B-010, B-020, B-030	<u>VENTILATION FAN ASSEMBLY</u> RADON AWAY HS2000E 115 VAC, $\frac{1}{3}$ HP WITH INTEGRAL DISCONNECT SWITCH
PRESSURE SWITCH PS-010, PS-020, PS-030	<u>LOW PRESSURE SWITCH</u> DWYER 3010MR PHOTOHELIC SWITCH/GAUGE WIRED TO RTU ENCLOSURE

NO.	DATE	DESCRIPTION	BY

DRAWN BY: D. DOMBROWSKY
DESIGNED BY: J. CORSELLO
REVIEWED BY: C. FINNEGAN
PROJECT MGR: S. SOOS
PIC: D. SHEA
DATE: AUGUST 2015

B310/B308 LINKWAY
SUBSLAB DEPRESSURIZATION SYSTEM
FORMER IBM EAST FISHKILL FACILITY
HOPEWELL JUNCTION, NEW YORK

ELECTRICAL ONE LINE DRAWING

PROJECT NUMBER:

2999.03

SHEET NUMBER:

E-2

PROGRESS PRINT

03/05/15