

**FACT SHEET****State Superfund
Program****Receive Site Fact Sheets by *Email*.** See "For More Information" to Learn How.**Site Name:** DuPont-Stauffer Landfill**DEC Site #:** 3-36-009**Address:** 750 South Street
Newburgh, NY 12550

Have questions?

See

"Who to Contact"

Below

Remedial Design Completed/Cleanup Action to Begin at State Superfund Site

The Final Remedial Design Report for the site was approved in February 2013 that will allow the Remedial Action, expected to commence this summer, to address contamination related to the DuPont-Stauffer Landfill site ("Site") located at 750 South Street, Newburgh, Orange County under New York's State Superfund Program (See Site Map Figure 1). The approved Final Remedial Design Report is now available for public review.

The Site is listed as a "Class 2" site in the State Registry of Inactive Hazardous Waste Disposal Sites (State Superfund sites). A Class 2 site represents a significant threat to public health or the environment - action is required.

Documents related to the cleanup of this Site can be found at the location(s) identified below under "Where to Find Information."

Site Background

DuPont purchased property on both the north and south side of South Street from the Fabrikoid Company of Newburgh in 1911. DuPont used nitrocellulose to coat fabrics at the Site until the late 1950s or early 1960s when vinyl replaced nitrocellulose as the coating agent. Coated fabric was used primarily in manufacturing car seats and interiors. Stauffer Chemical (Stauffer) purchased the properties from DuPont in 1967. Stauffer continued production of coated fabrics and also produced polyvinyl chloride (PVC) sheeting until January 1979 when operations were shut down. Records indicate that Stauffer ceased on-site disposal activities in 1974.

The main manufacturing areas were located south of South Street in what is currently the Former Creek Industrial Park. The manufacturing facility south of South Street was purchased by Creek Industrial Center in 1979.

The northern portion of the facility, which Stauffer retained ownership of and which now constitutes the Site, contained two waste disposal areas referred to as the South and North Landfills. Old Pierces Road is an unused road that separates the northern and southern portions of the Site. (See Figure 2)

The area south of Old Pierces Road includes the South Landfill. This portion of the Site contains a few gravel areas and concrete platforms and is overgrown with grasses, scrub brush, and small trees. The South Landfill was reportedly used for the storage, burning, and burial of various plant wastes and residual waste ash.

The North Landfill lies north of Old Pierces Road. The North Landfill contained an incinerator that was used to burn wastes and an open field that was used to evaporate waste. Some non-burnable wastes were disposed of on-site.

As a result of the investigations conducted on site, seven waste fill types were identified as follows:

- Type A waste fill, found in the northern area of the Site, consists largely of gray-colored fine ash/cinder/soil material mixed with other inert debris (glass, wood, brick, etc.).
- Type B waste fill, found in the eastern area of the Site, consists of hardened polyvinyl chloride (PVC) sheeting, fabrics, construction and demolition (C&D) debris, fabrics, and small amounts of scrap metal scattered on the ground surface.
- Type C waste fill, located in the central area of the Site, consists of C&D debris, PVC, and fabric exposed at the ground surface.
- Type D waste fill, located in the central and eastern areas of the Site as relatively small, isolated pockets of buried fill, consists of colored paste/putty-like material intermittently mixed with fabrics and other debris.
- Type E waste fill, located in the western area of the Site, consists of shallow impacted sediment.
- Type F waste fill, located in the southern area of the Site, consists of mounded waste material and impacted soils.
- South Landfill waste fill, located in the southern area of the Site, consists primarily of black ash/cinder material with some C&D debris.

A Record of Decision (ROD) was prepared by the NYSDEC Division of Environmental Remediation (DER) during August 2006 that identifies the following remediation goals:

- Eliminate, or reduce to the extent practicable, exposure to the surface and subsurface waste and contaminated soils and other identified waste fill types in the North and South Landfill areas.
- Eliminate, or reduce to the extent practicable, the potential for exposure to on-site soil vapor and groundwater.
- Eliminate, or reduce to the extent practicable, the potential for degradation to Gidneytown Creek due to runoff from the Site.

Highlights of the Upcoming Cleanup Activities

To achieve the remediation goals described above, the ROD selected excavation, characterization, and off-site disposal of identified *hazardous* waste fill types; construction of an engineered cap for consolidation of all remaining *non-hazardous* waste fill types on site; and soil cover with a demarcation layer for excavated areas.

The NYSDEC later issued an Explanation of Significant Difference (ESD) in June 2007 that modified the selected remedy to allow the excavated South Landfill waste that is characterized as hazardous waste to be treated within the South Landfill area to meet the requirements of Land Disposal Restrictions (LDRs) pursuant to 40 CFR Part 268 and 6NYCRR Part 376, with subsequent off-site disposal at a solid waste facility if testing following pre-treatment demonstrates that it meets all the criteria pursuant to these LDR regulations. If the wastes continue to be hazardous, they will be disposed of off-site at a permitted hazardous waste facility.

The Site is zoned for light industrial/commercial use and the Owner currently intends that the property will be limited to commercial or industrial use consistent with the current zoning. Use restrictions will be set forth in a future environmental easement that will be recorded in the Orange County Clerk's Office.

Consistent with a restriction that the Site be used only for light industrial/commercial use, the Soil Cleanup Objectives for Commercial Use Sites, set forth in 6 NYCRR Part 375-6.8(b), are the remedial action objectives for this cleanup.

Additional site details, including environmental and health assessment summaries, are available on NYSDEC's website at:

<http://www.dec.ny.gov/cfm/external/derexternal/haz/details.cfm?pageid-3&progno-336009>

Next Steps in the Remedial Process

A Final Remedial Design Report for the cleanup action was presented to the NYSDEC on February 14, 2013. As identified in the Report, Stauffer Management Company (SMC); Bayer Crop Science, Inc. (successor-by-merger to Stauffer Chemical Company) (BCSI); and E.I. duPont de Nemours and Company (DuPont) intend to initiate construction at the Site as early as the summer of 2013. The NYSDEC approved the Final Design by a letter dated February 22, 2013.

Field mobilization to initiate construction is presently expected sometime during June 2013. The construction is expected to occur primarily during 2013 with final restoration activities likely to occur during Spring 2014.

After completion of the cleanup activities, a Final Engineering Report will be prepared that describes the cleanup activities completed and certifying that cleanup requirements have been achieved or will be achieved.

The NYSDEC will keep the public informed throughout the cleanup of the Site.

FOR MORE INFORMATION

Where to Find Information

Project documents are available at the following location(s) to help the public stay informed:

City of Newburgh Planning Office

City Hall, 83 Broadway
Newburgh, N.Y. 12250
Phone: (845)569-9400
Attn: Ian MacDougall

Newburgh Free Library

124 Grand Street
Newburgh, N.Y. 12250
Phone: (845) 563-3601
Attn: Chuck Thomas

NYSDEC Region 3 Office

21 South Putt Corners Road
New Paltz, N.Y. 12561
Phone: (845) 256-3154
Attn: Michael Knipfing

Who to Contact

Project Related Questions

Salvatore F Priore, P.E., Project Manager
New York State Department of Environmental
Conservation
Division of Environmental Remediation
625 Broadway, 11th Floor
Albany, NY 12233-7014
(518) 402-9662
sfpriore@gw.dec.state.ny.us

Site-Related Health Questions

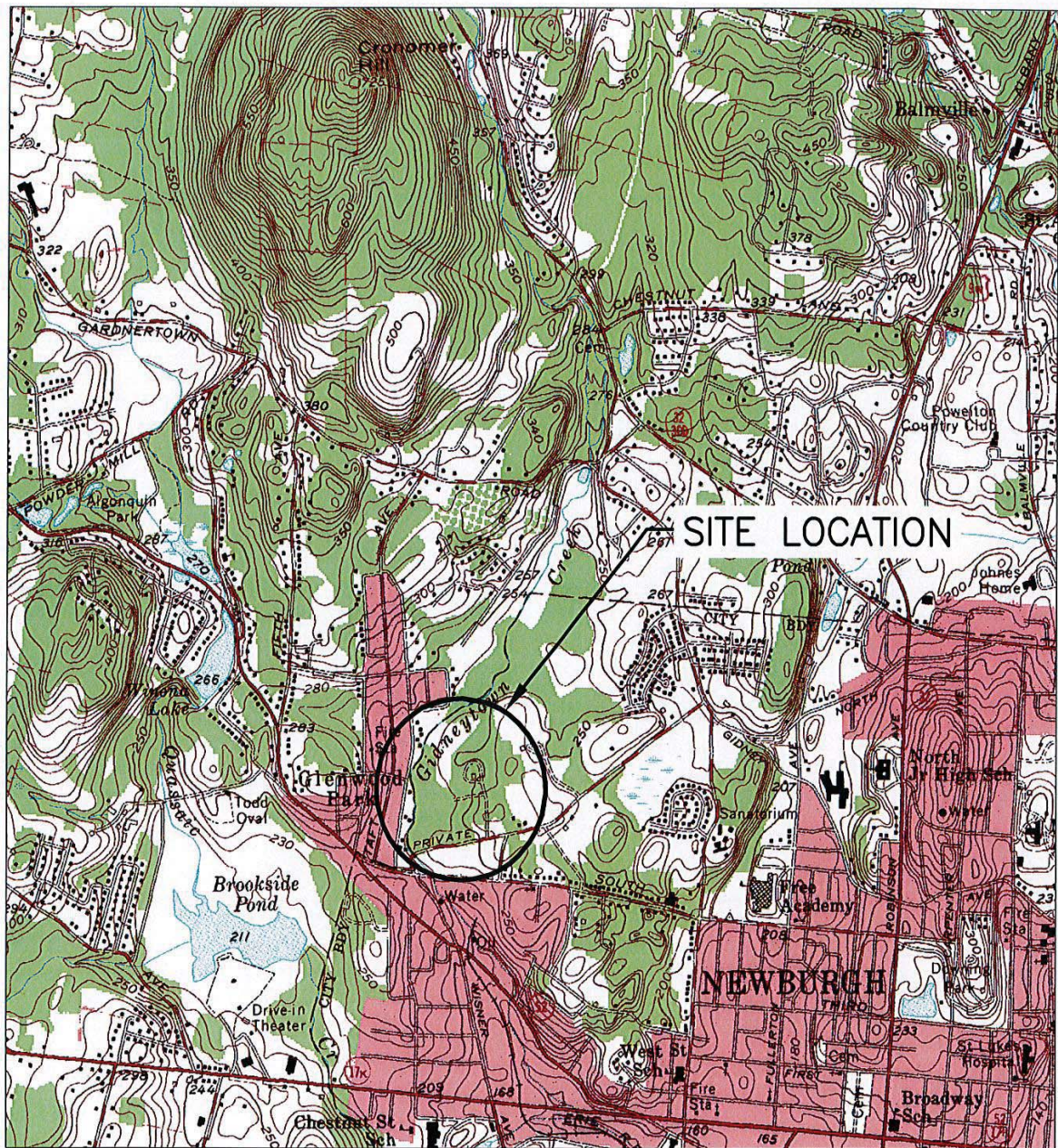
Nathan M. Waltz, Public Health Specialist II
New York State Department of Health
Bureau of Environmental Exposure Investigation
Empire State Plaza, Corning Tower, Room 1787
Albany, New York 12237
(518) 402-7880
nmw02@health.State.ny.us

We encourage you to share this fact sheet with neighbors and tenants, and/or post this fact sheet in a prominent area of your building for others to see.

Receive Site Fact Sheets by Email

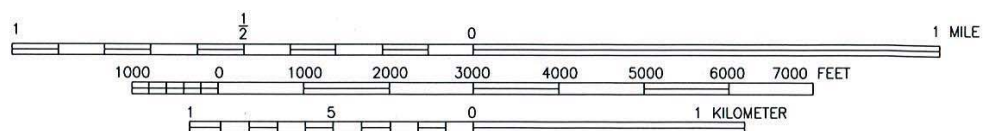
Have site information such as this fact sheet sent right to your email inbox. NYSDEC invites you to sign up with one or more contaminated sites county email listservs available at the following web page: <http://www.dec.ny.gov/chemical/61092.html>. It's quick, it's free, and it will help keep you *better informed*.

As a listserv member, you will periodically receive site-related information/announcements for all contaminated sites in the county(ies) you select.



ADAPTED FROM: NEWBURGH, NEW YORK U.S.G.S. 7.5 MIN. QUAD

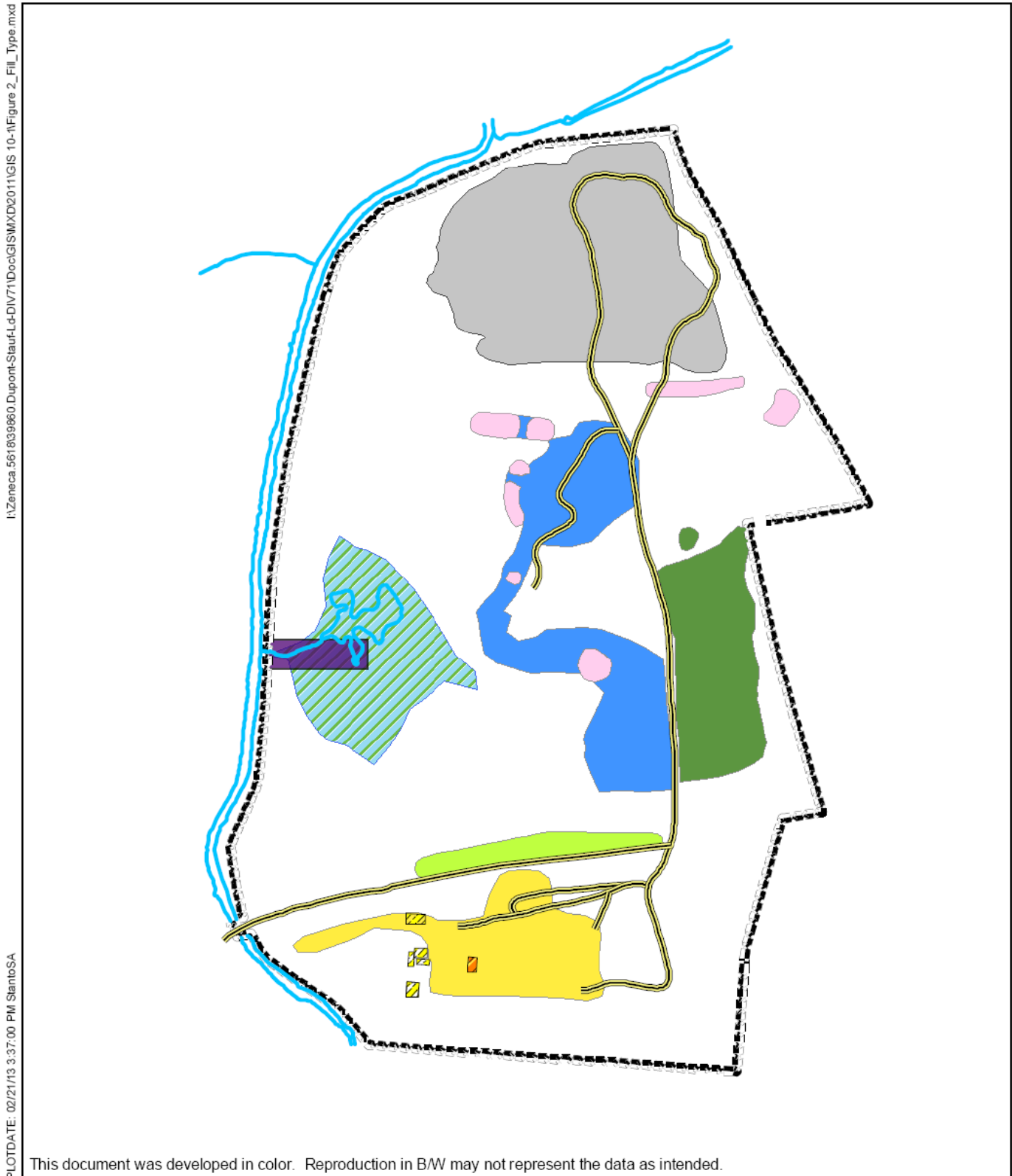
DUPONT – STAUFFER LANDFILL SITE
NEWBURGH, NEW YORK
SITE LOCATION MAP



FILE NO. 5618.39860.111
NOVEMBER 2011

SCALE: 1:24000

FIGURE 2



LEGEND

Previously Defined Fill Areas

- Type A: Grey Incinerator Ash & Cinders
- Type B: C&D Debris, PVC, Fabrics Scattered
- Type C: C&D Debris, Ash, Cinders, PVC, Fabrics
- Type D: PVC & Fabrics with VOCs detected
- Type E: Shallow Soils
- Type F: Mounded Soils
- South Landfill Ash/Cinders

- Water Features
- Unpaved Roads
- Concrete Pads
- Brick Buildings
- Fence
- Delineated Wetlands

DUPONT STAUFFER LANDFILL
NEWBURGH, NEW YORK

FILL TYPE
LOCATIONS

