



FACT SHEET

State Superfund Program

Receive Site Fact Sheets by *Email*. See "For More Information" to Learn How.

Site Name: NYSEG - Goshen MGP
DEC Site #: 336046
Address: 150 West Main St
Goshen, NY 10924

Have questions?
See
"Who to Contact"
Below

Cleanup Action to Begin at State Superfund Site

Action is about to begin that will address the contamination related to the New York State Electric and Gas (NYSEG) - Goshen Manufactured Gas Plant (MGP) site ("site") located at 150 West Main St, Goshen, Orange County under New York's State Superfund Program. Please see the map for the site location.

Documents related to the cleanup of this site can be found at the location(s) identified below under "Where to Find Information." The cleanup activities will be performed by the NYSEG with oversight provided by the New York State Department of Environmental Conservation (NYSDEC).

Highlights of the Upcoming Cleanup Activities

The goal of the cleanup action for the site is to achieve cleanup levels that protect public health and the environment. The cleanup action for the site includes:

1. Excavation and off-site disposal of approximately 760 cubic yards of surface and subsurface soil, including former MGP structures and foundations.
2. In-situ solidification (ISS) of approximately 2,600 cubic yards of contaminated soil to approximately 28 feet below grade. In-situ solidification involves the treatment of contaminated soil with cement and other amendments to create a low permeability material that prevents the further release of contaminants to the environment.
3. Removal of sediment with elevated levels of contamination in the Rio Grande Creek near the mouth of the 24-inch outfall pipe that traverses the site and discharges to the creek, to a depth of two feet. Clean material suitable for the habitat at the bottom of the creek will be imported from off-site to replace the impacted sediment removed from the Creek.
4. Installation of recovery wells in the area between the existing service center and the soil area being treated with ISS. Recovery wells will collect mobile coal tar in the area immediately north of the on-site NYSEG building.
5. A site cover will be installed to allow for commercial use of the site. The cover will consist either of structures such as buildings, pavement, sidewalks comprising the site development or a soil cover at least one foot thick which meets the requirements for cover material as commercial use.

6. Placement of an environmental easement to restrict the use of the site to commercial use and restrict the use of groundwater.

7. A Site Management Plan (SMP) will be developed and maintained since the remedy for this site allows contamination above unrestricted levels to remain at the site. The property owner will be required to manage and maintain the site in accordance with the SMP.

A Community Air Monitoring Plan (CAMP) will be in place during all ground intrusive activities. The CAMP provides a measure of protection for the downwind community (i.e., residences, businesses and on-site workers not directly involved with work activities) from potential airborne contaminant releases that result from the investigative and remedial activities.

Next Steps

After completion of the cleanup activities, NYSEG will prepare a Final Engineering Report. The Final Engineering Report will describe the cleanup activities completed and certify that cleanup requirements have been achieved or will be achieved.

The NYSDEC will keep the public informed throughout the cleanup of the site.

Background

Location: The former Goshen Manufactured Gas Plant (MGP) is located at 250 West Main Street in the Village of Goshen, in a commercial and residential area. The one acre site is bounded by Rio Grande Creek at the northwest corner, Village of Goshen property to the north and northeast, private commercial properties to the east and west, and West Main Street to the south.

Site Features: The site is occupied by a NYSEG office building, parking lot and an open outdoor equipment storage area. An active natural gas service center occupies the eastern portion of the site. Rio Grande Creek passes through the northwest corner of the site and flows in an east to west direction. No remnants of the former MGP structures exist above grade on-site.

Current Zoning/Use(s): The site is currently owned by NYSEG and is zoned for commercial uses.

Past Use(s) of the Site: The Goshen site was the location of a former MGP that operated for approximately 60 years, from 1885 to 1945. Coal tar, a reddish-brown oily liquid, was a waste material produced in this process that formed as a condensate as the gas cooled. The site was converted to a natural gas operations center between 1945 and 1947.

Site Geology and Hydrogeology: Site geology consists of three units. These are, from top to bottom: fill which is 10 to 12 feet thick; alluvial sand and silt with a thickness of approximately 15 feet; and a till unit which is comprised of a very dense mixture of sand and silt with varied amounts of gravel and clay. Groundwater is encountered at a depth of approximately 5 to 15 feet

below the ground surface. Shallow groundwater (upper 20 feet) beneath the site moves in the direction of Rio Grande Creek (northwest), while deeper groundwater moves westward parallel with creek flow.

Additional site details, including environmental and health assessment summaries, are available on NYSDEC's website at:

<http://www.dec.ny.gov/cfm/external/derexternal/haz/details.cfm?pageid=3&progno=336046>

State Superfund Program: New York's State Superfund Program (SSF) identifies and characterizes suspected inactive hazardous waste disposal sites. Sites that pose a significant threat to public health and/or the environment go through a process of investigation, evaluation, cleanup and monitoring.

NYSDEC attempts to identify parties responsible for site contamination and require cleanup before committing State funds.

For more information about the SSF, visit: <http://www.dec.ny.gov/chemical/8439.html>

FOR MORE INFORMATION

Where to Find Information

Project documents are available at the following location(s) to help the public stay informed.

Goshen Public Library
203 Main Street
Goshen, NY 10924
phone: (845)-294-6606

NYSDEC
Attn: Sarah Saucier
625 Broadway
Albany, NY 12233-7014
phone: 518-402-9675
(sarah.saucier@dec.ny.gov)

Who to Contact

Comments and questions are always welcome and should be directed as follows:

Project Related Questions

Sarah Saucier
Department of Environmental Conservation
Division of Environmental Remediation
625 Broadway
Albany, NY 12233-7014
518-402-9675
sarah.saucier@dec.ny.gov

Site-Related Health Questions

Kristin Kulow
New York State Department of Health
28 Hill Street, Suite 201
Oneonta, NY 13820
607-432-3911
BEEI@health.ny.gov

We encourage you to share this fact sheet with neighbors and tenants, and/or post this fact sheet in a prominent area of your building for others to see.

Receive Site Fact Sheets by Email

Have site information such as this fact sheet sent right to your email inbox. NYSDEC invites you to sign up with one or more contaminated sites county email listservs available at the following web page: <http://www.dec.ny.gov/chemical/61092.html>. It's quick, it's free, and it will help keep you *better informed*.



As a listserv member, you will periodically receive site-related information/announcements for all contaminated sites in the county(ies) you select.

Note: Please disregard if you already have signed up and received this fact sheet electronically.

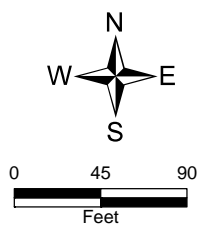
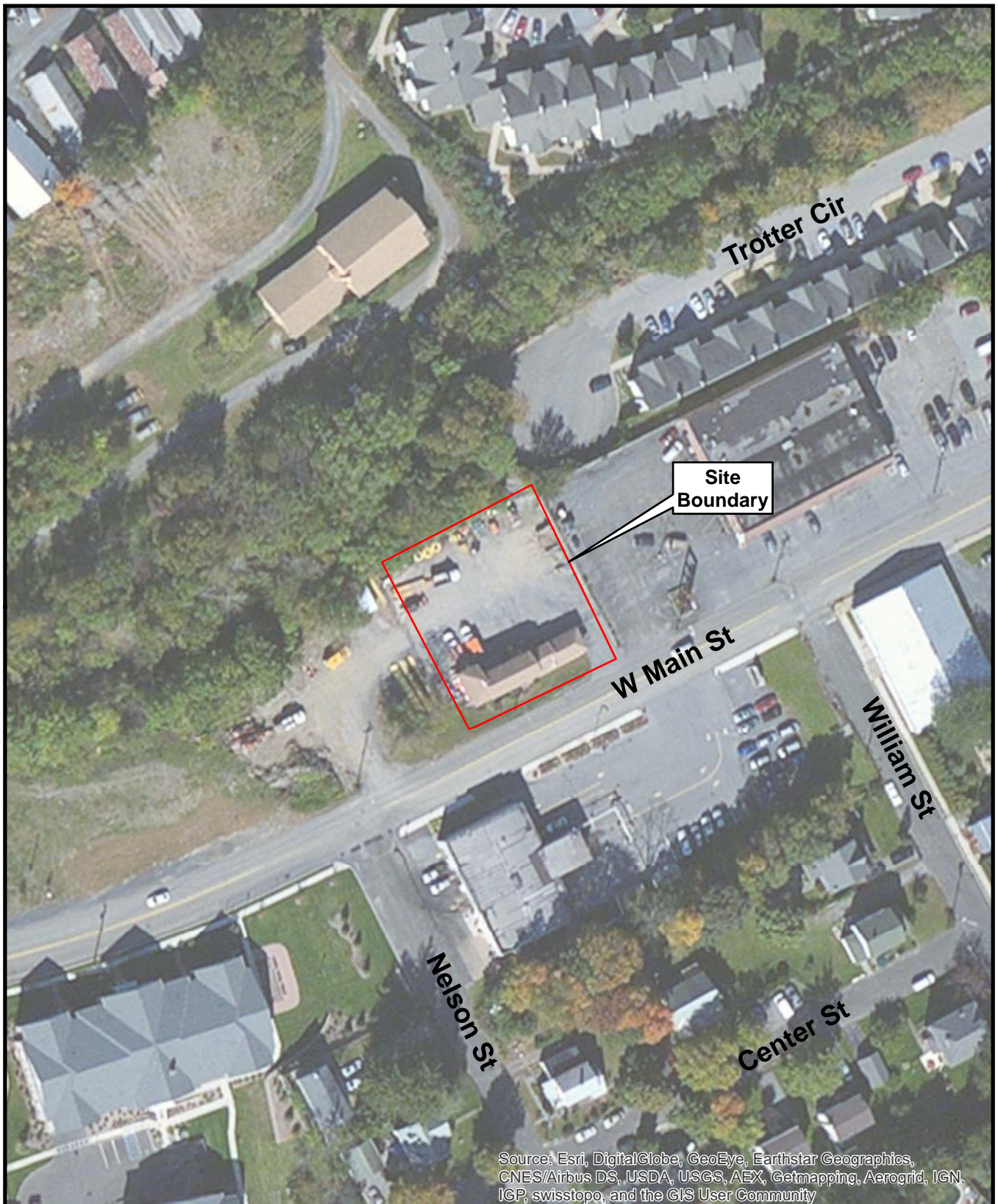


Figure 1
Site Map
Goshen MGP Site
Goshen, Orange County
Site No. 336046

