



# FACT SHEET

## State Superfund Program

Receive Site Fact Sheets by **Email**. See "For More Information" to Learn How.

**Revere Smelting & Refining**

**July 2011**

**Site No. 3-36-053**

**Town of Wallkill, Orange County, New York**

### Remedy Proposed for State Superfund Site, Operable Unit 1 Public Comment Period and Public Meeting Announced

The public is invited to comment on a remedy proposed by the New York State Department of Environmental Conservation (NYSDEC) to address contamination related to the Revere Smelting & Refining Site ("site") Operable Unit 1 (OU-1). The site is located at 65 Ballard Road in the Town of Wallkill, Orange County. See map for site location.

#### The Proposed Remedy

The remedy proposed for the site includes excavation, treatment, and placement of hazardous waste fill/source material in an on-site disposal cell; consolidation of non-hazardous waste; and restoration of streams, designated wetlands, and ecologically sensitive areas. The proposed remedy is described in a document called a "Proposed Remedial Action Plan" developed under New York's State Superfund Program. The document is available for public review at the Middletown Thrall Public Library and the NYSDEC Region 3 Office identified below under "Where to Find Information". The document also is available on the NYSDEC web site at <http://www.dec.ny.gov/chemical/37552.html>.

**Public Meeting**  
**Thursday, August 11, 2011**  
**7:00 pm**

**Wallkill Town Hall, Building A**  
**99 Tower Drive**  
**Middletown, New York 10941**  
**(845) 692-7800**

NYSDEC invites you to a public meeting to discuss the remedy proposed for OU-1. You are encouraged to provide comments at the meeting, and during the 30-day comment period described in this fact sheet.

**State Superfund Program:** New York's State Superfund Program (SSF) identifies and characterizes suspected inactive hazardous waste disposal sites. Sites that pose a significant threat to public health and the environment go through a process of investigation, evaluation, cleanup and monitoring.

NYSDEC generally attempts to identify parties responsible for site contamination and require cleanup before committing State funds.

For more information about the SSF, visit:  
[www.dec.ny.gov/chemical/8439.html](http://www.dec.ny.gov/chemical/8439.html)

#### How to Comment

NYSDEC is accepting written comments about the proposed remedy for 30 days, from July 22, 2011 through August 22, 2011. Submit written comments to:

William Bennett  
NYSDEC  
Division of Environmental Remediation  
625 Broadway  
Albany, NY 12233-7014  
[wbbennet@gw.dec.state.ny.us](mailto:wbbennet@gw.dec.state.ny.us)

## **Summary of the Proposed Remedy**

The proposed remedy represents the alternative preferred by NYSDEC and the New York State Department of Health (NYSDOH) to address site contamination. The draft cleanup plan has several goals:

- identify cleanup levels to be achieved
- summarize other alternatives considered
- explain why NYSDEC and NYSDOH believe the proposed remedy will protect public health and the environment
- provide a detailed description of the proposed remedy.

The proposed remedy was chosen following a detailed investigation of the site and evaluation of alternatives to address contamination, called a “Remedial Investigation/Feasibility Study”. The “Proposed Remedial Action Plan” proposes a remedial alternative for OU-1 that includes:

- excavation, stabilization and on-site consolidation of hazardous waste fill, soils, and sediments contaminated with lead in an engineered disposal cell meeting the substantive requirements of 6 NYCRR Part 360. The containment cell will have a bottom liner overlain by a protective layer, a leachate collection and management system, and a multilayer cap.
- excavation and consolidation or capping of non-hazardous surface soils contaminated with lead and arsenic in close proximity to the active Revere facility to meet industrial and commercial soil cleanup objectives, as appropriate.
- excavation of soils and sediments contaminated with lead and arsenic in ecologically sensitive areas to meet standards, criteria, & guidelines (SCGs) protective of ecological receptors and restoration of impacted streams and wetlands.
- imposition of institutional controls and a Site Management Plan to ensure the remedy will provide long term protection of human health and the environment.

The estimated cost of the selected alternative is \$ 18,773,000.

## **Next Steps**

NYSDEC will consider public comments as it finalizes the remedy for the site. The selected remedy will be described in a document called a “Record of Decision” that will explain why the remedy was selected and respond to public comments. This document will be made available to the public (see “Where to Find Information” below).

The project then moves to designing and performing the cleanup action to address OU-1 contamination. NYSDEC will keep the public informed during the cleanup of the site.

## **Background**

The site is listed as a Class “2” site in the State Registry of Inactive Hazardous Waste Sites (list of State Superfund sites). A Class 2 site represents a significant threat to public health or the environment; action is required.

The Revere Smelting and Refining (Revere) site is located at 65 Ballard Road in the Town of Wallkill, Orange County. The site consists of 60.6 acres of land in a mixed commercial and industrial area. Approximately one quarter of the site is actively used by Revere which operates a secondary lead smelter to recycle batteries.

During the late 1970’s and early 1980’s large quantities of fill material containing lead slag, battery parts and other wastes were buried at the site. This fill material was buried immediately to the east of the active plant in OU-1, beneath the active plant in OU-4, and to the west of the active plant in a front lawn area. The surface soils and sediments extending beyond the filled areas of OU-1 have also been impacted by windblown particles from stack emissions and surface water runoff.

In the late 1990’s, Revere started a source removal action to address former waste disposal areas outside of the active plant site. Revere stopped the removal action before completion in 1999. In 2000, a Consent Order with Revere divided the site into four operable units. These operable units were redefined based on a 2011 Consent Order.

An operable unit represents a portion of a remedial program for a site that for technical or administrative reasons can be addressed separately to investigate, eliminate or mitigate a release, threat of release or exposure pathway resulting from the site contamination. Based on the 2011 Consent Order, OU-1 consists of all environmental media other than groundwater on the 60.6-acre site, excluding the active facility (OU-4), as well as all environmental media other than groundwater within six off-site properties where impacts from the site have been documented. OU-2 is defined as groundwater. OU-3 is defined as any off-site environmental media other than groundwater impacted by the site which is not a part of OU-1. OU-4 is defined as the active facility.

Under the 2000 Consent Order, a State Superfund Remedial Investigation (RI) was initiated by the NYSDEC to address OU-1. The field work for this RI was conducted in 2001, 2005, 2009, and 2010. The RI Report was completed in June 2007 an addendum was completed in March 2011. In June 2008, a Consent Order for a Feasibility Study/Remedial Design/Remedial Action (FS/RD/RA) was signed by Revere and the NYSDEC to address OU-1. A Feasibility Study was prepared by Revere for OU-1 in 2009 and an addendum was completed in March 2011.

## FOR MORE INFORMATION

### Where to Find Information

Project documents are available at the following location(s) to help the public to stay informed. These documents include the 2011 Consent Order and the Proposed Remedial Action Plan for OU-1.

Middletown Thrall Public Library  
11-19 Depot Street  
Middletown, New York 10940  
(845) 341-5454  
Monday - Thursday: 9:00 am - 8:00 pm  
Friday: 9:00 am - 6:00 pm  
Saturday: 10:00 am - 2:00 pm

NYSDEC Region 3 Office  
21 South Putt Corners Road  
New Paltz, New York 12561  
(845) 256-3154  
(By appointment only)  
Monday - Friday: 8:30 am - 4:30 pm

### Who to Contact

Comments and questions are always welcome and should be directed as follows:

#### Project Related Questions

Mr. William Bennett  
New York State Department of  
Environmental Conservation  
Division of Environmental Remediation  
625 Broadway, 11<sup>th</sup> Floor  
Albany, NY 12233-7014  
1-866-520-2334

#### Site-Related Health Questions

Mr. Anthony Perretta  
New York State Department of Health  
Flanigan Square  
547 River Street  
Troy, NY 12180  
(518) 402-7880

**We encourage you to share this fact sheet with neighbors and tenants, and/or post this fact sheet in a prominent area of your building for others to see.**

### Receive Site Fact Sheets by Email

Have site information such as this fact sheet sent right to your email inbox. NYSDEC invites you to sign up with one or more contaminated sites county email listservs available at the following web page: [www.dec.ny.gov/chemical/61092.html](http://www.dec.ny.gov/chemical/61092.html) . It's *quick*, it's *free*, and it will help keep you *better informed*.

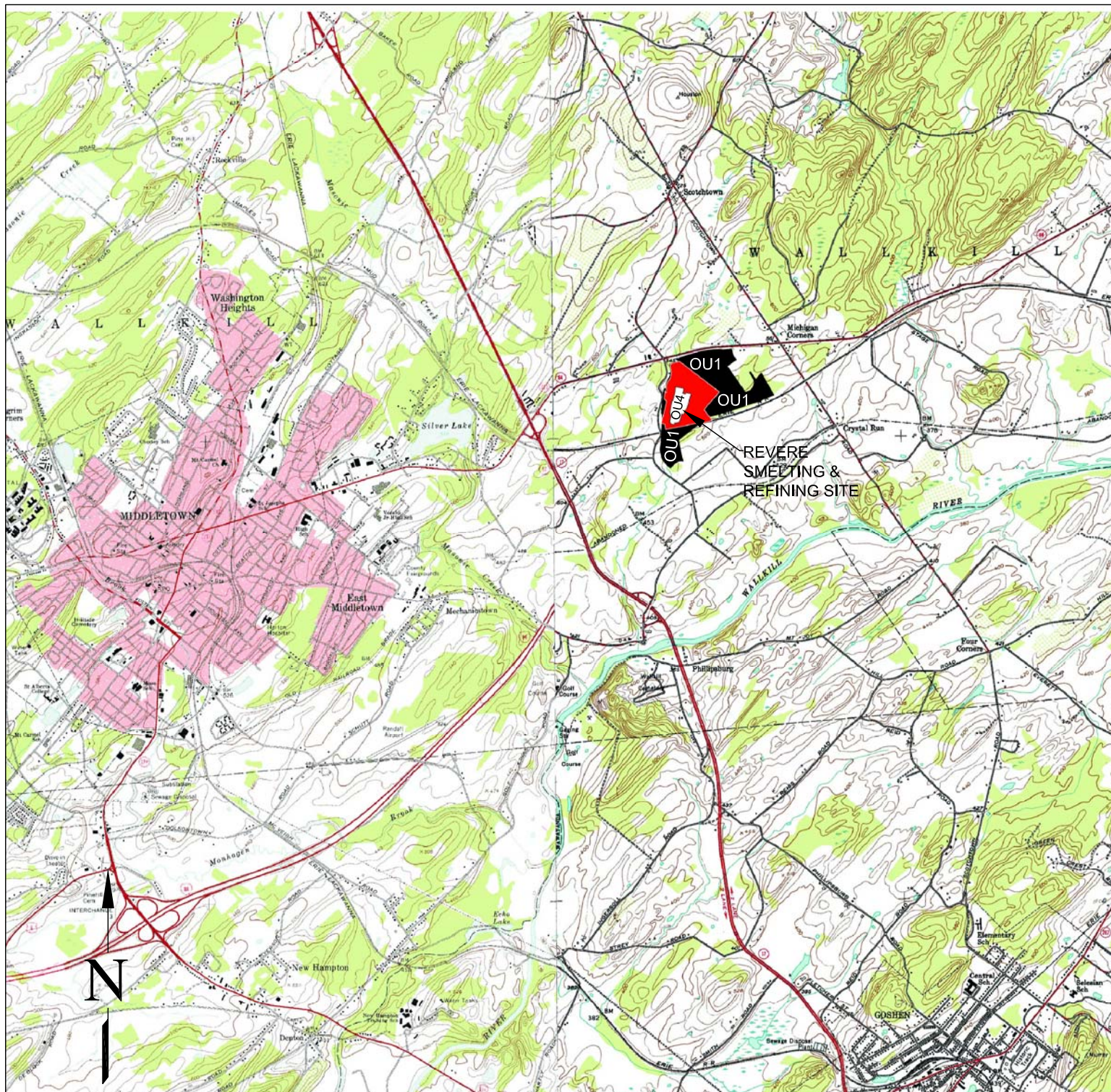


As a listserv member, you will periodically receive site-related information/announcements for all contaminated sites in the county(ies) you select.

You may continue also to receive paper copies of site information for a time after you sign up with a county listserv, until the transition to electronic distribution is complete.

**Note:** Please disregard if you already have signed up and received this fact sheet electronically.





After U.S.G.S. 7.5 Minute Topographic Quadrangles, Goshen and Middletown, New York, 1983.



#### LEGEND



OU1 BOUNDARY

REGISTRY SITE BOUNDARY 3-36-053

NOTE: ALL LOCATIONS ARE APPROXIMATE.  
 OU2 INCLUDES ALL ON-SITE GROUNDWATER.  
 OU3 INCLUDES ALL OFF-SITE MEDIA IMPACTED BY  
 REVERE'S ACTIVITIES.  
 OU4 INCLUDES THE FACILITY.



NEW YORK

QUADRANGLE  
LOCATION

## SITE LOCATION FIGURE

REVERE SMELTING &  
 REFINING CORPORATION  
 MIDDLETOWN, NEW YORK

FIGURE 1

NO.	DATE	REVISION	APP.

Scale: SEE DWG Drawn By: MA Checked By: JS Date: 04/2011