



FACT SHEET

State Superfund Program

Receive Site Fact Sheets by **Email**. See “For More Information” to Learn How.

Revere Smelting & Refining Site, Operable Unit 1
Site No. 3-36-053
Town of Wallkill, Orange County, New York

March 2012

Cleanup Action to Begin at State Superfund Site

Action is about to begin that will address contamination related to the Revere Smelting & Refining Site (“site”), Operable Unit 1 (OU-1), located at 65 Ballard Road in the Town of Wallkill, Orange County under New York’s State Superfund Program. See Figure 1 for site location.

The cleanup action for the site includes the excavation of lead-impacted fill, soil and sediment, treatment of fill or source material exhibiting a toxicity characteristic for lead to render the material non-hazardous, and consolidation of the non-hazardous materials in an on-site lined containment cell. The remedial action will also include the restoration of excavated areas and affected streams, wetlands and ecological areas. The cleanup activities will be performed by Revere Smelting & Refining with oversight provided by the New York State Department of Environmental Conservation (NYSDEC).

Highlights of the Upcoming Cleanup Activities

The goal of the cleanup action for the site is to achieve cleanup levels that protect public health and the environment.

The main components of the remedy include the following:

State Superfund Program: New York’s State Superfund Program (SSF) identifies and characterizes suspected inactive hazardous waste disposal sites. Sites that pose a significant threat to public health and the environment go through a process of investigation, evaluation, cleanup and monitoring.

NYSDEC generally attempts to identify parties responsible for site contamination and require cleanup before committing State funds.

For more information about the SSF, visit:
www.dec.ny.gov/chemical/8439.html

1. Lead-contaminated source material will be excavated to depths of approximately 2 to 24 feet below ground surface from the identified area of waste disposal and hot spot areas. The excavated source material will be treated and rendered non-hazardous.
2. An engineered on-site containment cell will be constructed on Revere’s property for consolidation of the non-hazardous materials.

3. Lead and arsenic-impacted soil from the commercial, industrial and ecological areas identified at the site will be removed and consolidated.
4. Lead and arsenic-impacted sediment from the sediment areas identified at the site will be removed and consolidated.
5. Streams, ponds and wetland areas where remedial actions were implemented will be restored to meet future ecological uses.
6. Upon completion of the remedial action, ecological protective buffers will be constructed between commercial/industrial areas and ecological areas.
7. Long-term operation and maintenance, including inspection of the containment cell and groundwater monitoring, will be implemented to ensure the effectiveness of the remedy is maintained.
8. An institutional control in the form of an environmental easement will be placed on the site properties owned by Revere. The environmental easement will require (a) limiting the use and development of the property to industrial use in designated industrial areas and commercial or industrial use in all other areas in conformance with local zoning laws; (b) prohibiting agriculture or vegetable gardens on the property; (c) compliance with the approved site management plan; (d) restricting the use of groundwater; and (e) submission of a periodic certification of institutional and engineering controls to the Department by the site owner.
9. A Site management plan will be developed that includes the following institutional and engineering controls: (a) identification of any land use restrictions on the site; (b) management and inspection of the on-site containment cell, cover systems and ecological buffers; (c) monitoring of groundwater, surface water, biota, and sediment to assess the performance and effectiveness of the remedy; and (d) provisions for the management of future excavations in areas of remaining contamination.

Next Steps

Revere Smelting & Refining, with NYSDEC's oversight, is expected to begin cleanup activities at the site in March 2012. These activities are scheduled to take approximately 2 years to complete at a cost estimate of \$18,773,000.

After it completes the cleanup activities for OU-1, Revere Smelting & Refining will prepare a Final Engineering Report. The Final Engineering Report will describe the cleanup activities completed and certify that cleanup requirements have been achieved or will be achieved.

NYSDEC will keep the public informed of the remedial action progress during the cleanup of the site.

Background

The Site is listed as a Class “2” site in the State Registry of Inactive Hazardous Waste Disposal Sites (list of State Superfund sites). A Class 2 site represents a significant threat to public health or the environment; action is required.

The Revere Smelting & Refining Site is located at 65 Ballard Road in the Town of Wallkill, Orange County. The site consists of 60.6 acres of land in a mixed commercial and industrial area. Approximately one quarter of the site is actively used by Revere which operates a secondary lead smelter to recycle batteries.

During the late 1970s and early 1980s, large quantities of fill material containing soils, lead slag, battery parts, and other wastes were used as fill at the site. This fill material was placed immediately to the east of the active plant in OU-1. Some surface soils and sediments extending beyond the filled areas of OU-1 are impacted and have been identified for remedial action.

In the late 1990s, Revere started a source removal action to address former waste disposal areas outside of the active plant site. Remediation was stopped in 1999 before completion. In 2000, a Consent Order with Revere divided the site into four Operable Units (OUs). An Operable Unit represents a portion of a remedial program for a site that for technical or administrative reasons can be addressed separately to investigate, eliminate or mitigate a release, threat of release or exposure pathway resulting from the site contamination.

These Operable Units were redefined based on a 2011 Consent Order. Based on the 2011 Consent Order, OU-1 consists of all environmental media other than groundwater on the 60.6 acre site, excluding the active facility (OU-4), as well as all environmental media other than groundwater within six off-site properties where impacts from the site have been documented. OU-2 is defined as groundwater. OU-3 is defined as any off-site environmental media other than groundwater impacted by the site which is not part of OU-1. OU-4 is defined as the active facility. A site map showing Operable Units is provided on Figure 2.

Under the 2000 Consent Order, a State Superfund Remedial Investigation (RI) was initiated by NYSDEC to address OU-1. The field work for this RI was conducted in 2001, 2005, 2009, and 2010. The RI Report was completed in June 2007 and an addendum was completed in March 2011. In June 2008, a Consent Order for a Feasibility Study/Remedial Design/Remedial Action (FS/RD/RA) was signed by Revere and NYSDEC to address OU-1. A Feasibility Study was prepared by Revere for OU-1 in 2009 and an addendum was completed in March 2011. The Phase I Remedial Design/Remedial Action (RD/RA) Work Plan for OU-1 was prepared by Revere in September 2011 and a revision was completed in December 2011. The Work Plan was approved by NYSDEC with modifications in January 2012.

FOR MORE INFORMATION

Where to Find Information

Project documents are available at the following location(s) to help the public to stay informed. These documents include the decision document describing the selected remedy for the site, called the “Record of Decision,” as well as the Phase I Remedial Design/Remedial Action (RD/RA) Work Plan for OU-1.

Middletown Thrall Public Library
11-19 Depot Street
Middletown, New York 10940
(845) 341-5454
Monday – Thursday: 9:00 am – 8:00 pm
Friday: 9:00 am – 6:00 pm
Saturday: 10:00 am – 2:00 pm

NYSDEC Region 3 Office
21 South Putt Corners Road
New Paltz, New York 12561
(845) 256-3154
(By appointment only)
Monday – Friday: 8:30 am – 4:30 pm

Who to Contact

Comments and questions are always welcome and should be directed as follows:

Project Related Questions

Mr. William Bennett
New York State Department of
Environmental Conservation
Division of Environmental Remediation
625 Broadway, 11th Floor
Albany, New York 12233-7014
(866) 520-2334

Site-Related Health Questions

Mr. Anthony Perretta
New York State Department of Health
Flanigan Square
547 River Street
Troy, New York 12180
(518) 402-7880

We encourage you to share this fact sheet with neighbors and tenants, and/or post this fact sheet in a prominent area of your building for others to see.

Receive Site Fact Sheets by Email

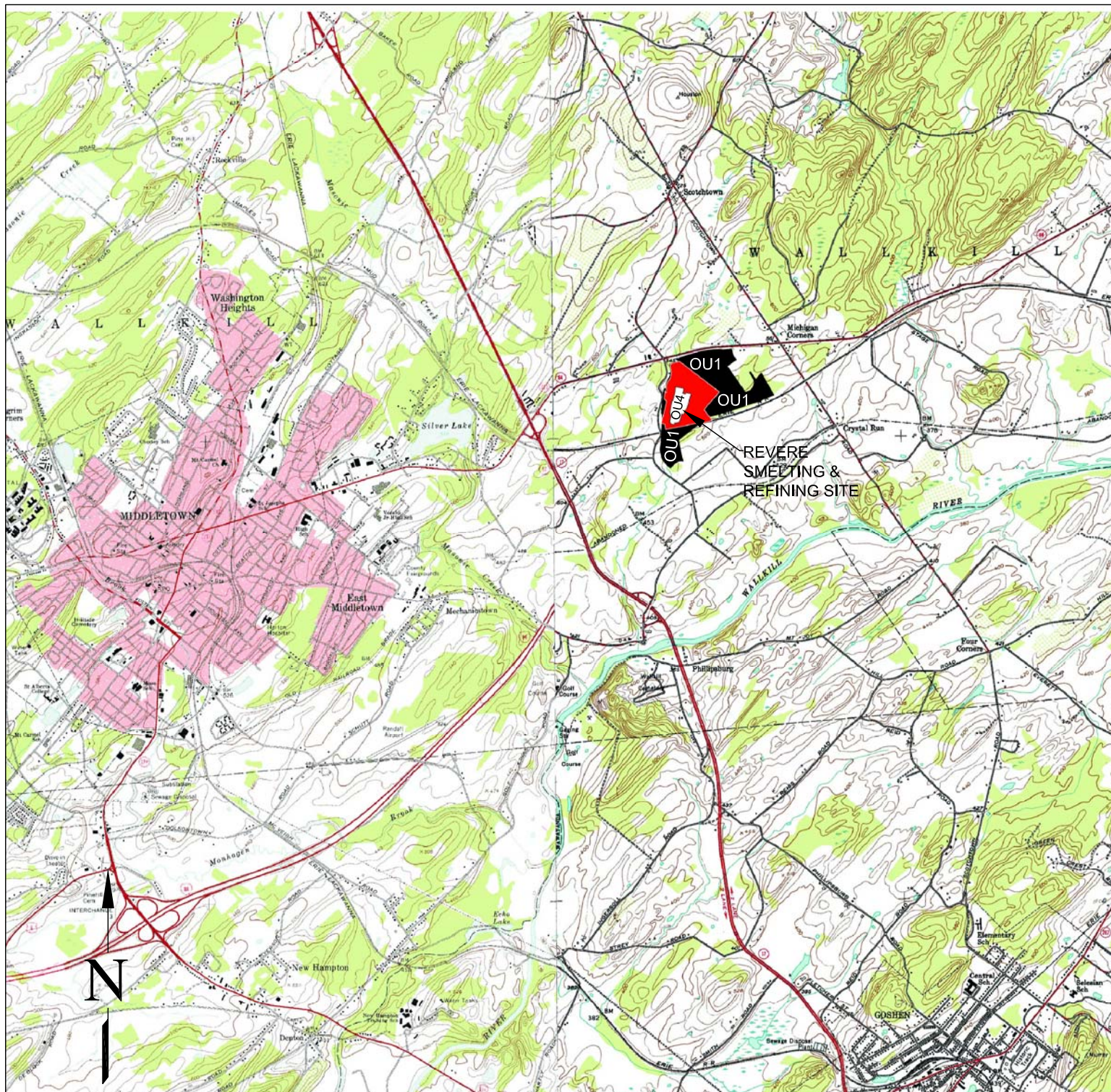
Have site information such as this fact sheet sent right to your email inbox. NYSDEC invites you to sign up with one or more contaminated sites county email listservs available at the following web page: www.dec.ny.gov/chemical/61092.html . It's *quick*, it's *free*, and it will help keep you *better informed*.



As a listserv member, you will periodically receive site-related information/announcements for all contaminated sites in the county(ies) you select.

You may continue also to receive paper copies of site information for a time after you sign up with a county listserv, until the transition to electronic distribution is complete.

Note: Please disregard if you already have signed up and received this fact sheet electronically.



After U.S.G.S. 7.5 Minute Topographic Quadrangles, Goshen and Middletown, New York, 1983.



LEGEND



OU1 BOUNDARY

REGISTRY SITE BOUNDARY 3-36-053

NOTE: ALL LOCATIONS ARE APPROXIMATE.
 OU2 INCLUDES ALL ON-SITE GROUNDWATER.
 OU3 INCLUDES ALL OFF-SITE MEDIA IMPACTED BY
 REVERE'S ACTIVITIES.
 OU4 INCLUDES THE FACILITY.



NEW YORK

QUADRANGLE
LOCATION

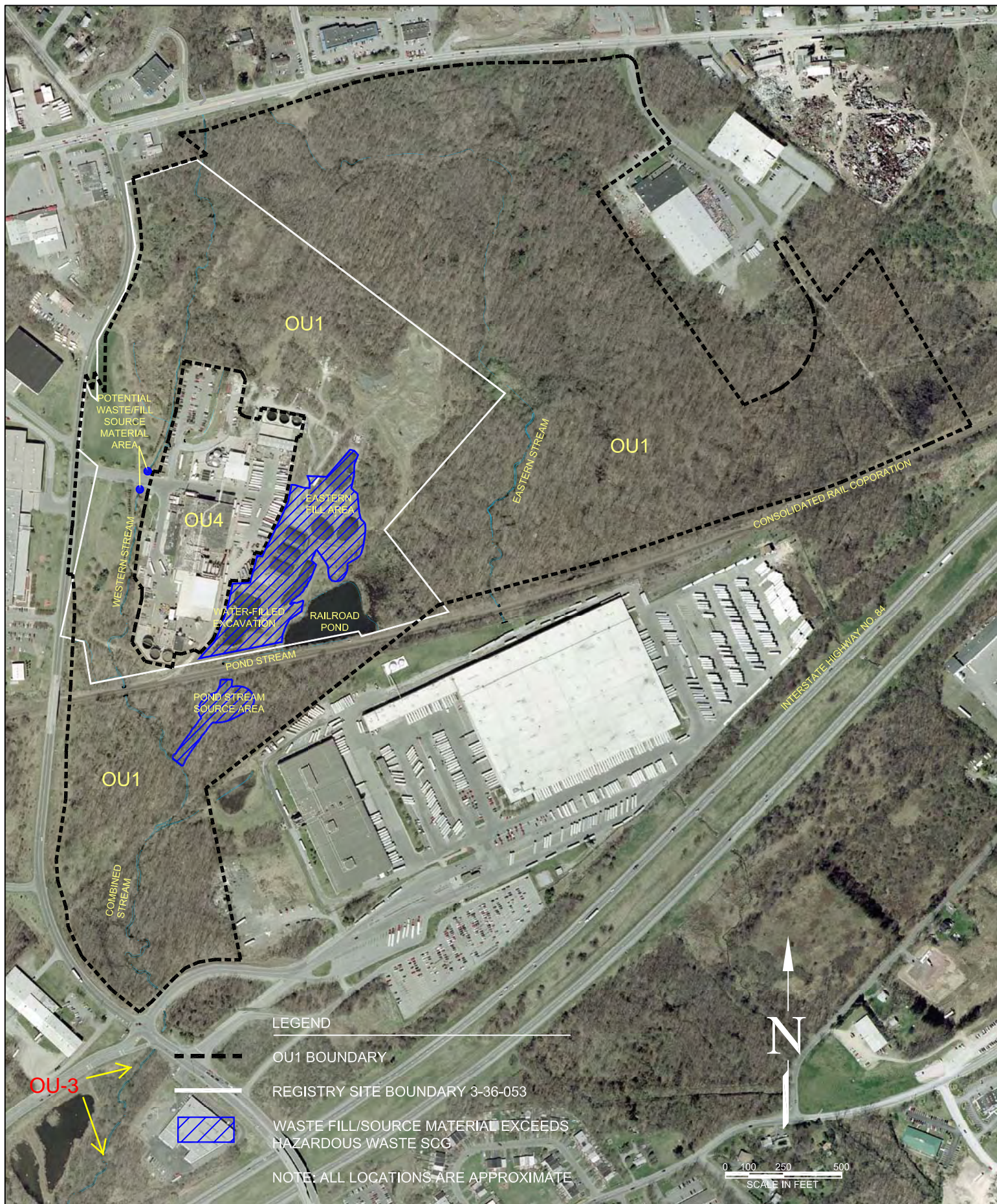
SITE LOCATION FIGURE

REVERE SMELTING &
 REFINING CORPORATION
 MIDDLETOWN, NEW YORK

FIGURE 1

NO.	DATE	REVISION	APP.

Scale: SEE DWG Drawn By: MA Checked By: JS Date: 04/2011



EXTENT OF WASTE FILL / SOURCE MATERIAL CONTAMINATION

REVERE SMELTING &
REFINING CORPORATION
MIDDLETOWN, NEW YORK

FIGURE 2

NO.	DATE	REVISION	APP.

Scale: SEE DWG Drawn By: MA Checked By: JS Date: 04/2011