



FACT SHEET

State Superfund Program

Receive Site Fact Sheets by *Email*. See "For More Information" to Learn How.

Site Name: Revere Smelting and Refining
DEC Site #: 336053
Address: 65 Ballard Road
Middletown, NY 10941

Have questions?
See
"Who to Contact"
Below

Interim Remedial Measure Planned for Operable Unit 4

The New York State Department of Environmental Conservation (NYSDEC) is planning a remedial action for operable unit 4 (OU-4) at the Revere Smelting and Refining site ("site") located at 65 Ballard Road, Middletown, Orange County. Work is planned to start on May 5, 2014. Please see the map for the site location. Documents related to the cleanup of this site can be found at the locations identified below under "Where to Find Information."

The site is listed as a Class "2" site in the State Registry of Inactive Hazardous Waste Disposal Sites (list of State Superfund sites). A Class 2 site represents a significant threat to public health or the environment; action is required.

Interim Remedial Measure (IRM)

An IRM is a cleanup activity that may be performed when a source of contamination or exposure pathway (the way in which a person may contact contamination) can be effectively addressed without extensive investigation and evaluation.

The IRM work plan describes the proposed activities that include:

Trenching in soil and bedrock and installing approximately 1600 feet of subsurface barrier wall consisting of soil/bentonite and cement/bentonite. Most of the barrier will be along the eastern edge of OU-4 (manufacturing portion of the site) with smaller portions built to close off openings in a barrier wall constructed in 1998-1999.

The purpose of the barrier wall is to aid in controlling ground water movement at the facility. The wall uses bentonite which is a low permeability clay that greatly reduces how much water can flow through it. The barrier wall when used in conjunction with ground water pumping wells should reduce the amount of contaminated ground water that can leave the facility area.

Upon completion of the work, a Construction Completion Report will be prepared that documents the activities that were performed.

NYSDEC will keep the public informed throughout the investigation and cleanup of the site.

Background

Current Zoning/Use: The site is zoned as Light Enterprise by the Town of Wallkill. Approximately one quarter of the site is actively used by Revere, which operates a secondary lead smelter to recycle batteries at the site. This active facility consists of two large buildings, the Main Plant where lead is smelted and poured into molds, and the Containment Building, which stores and processes the various parts of batteries and other hazardous waste.

Site Features: Beyond the active facility to the north and east are several acres of overgrown fields, mature woodlands, wetlands, and a pond. The pond empties into an unnamed stream. To the west of the facility are a front lawn area and an unnamed stream. To the south of the facility are railroad tracks.

Operable Units: There are four operable units (OUs) for the site. These operable units were defined in the 2011 Consent Order, as follows:

- OU-1 consists of all environmental media other than groundwater on the 60.6-acre site, excluding the active facility (OU-4), as well as all environmental media other than groundwater within six off-site properties (four of which are owned by Revere) where impacts from the site have been documented. Remediation is currently taking place in OU-1;
- OU-2 is all groundwater in the area of OUs 1, 3 and 4. The barrier wall identified in this fact sheet will aid in the cleanup of OU-2;
- OU-3 is off-site areas which are not a part of OU-1; and
- OU-4 is the area defined as the active facility.

Past Use of the Site: During the late 1970s and early 1980s, operations by Revere generated large quantities of process waste/fill consisting of lead slag, battery parts and other wastes that were disposed of at the site. This fill material was buried immediately to the east of the active plant in OU-1, beneath the active plant in OU-4, and to the west of the active plant in the front lawn area which is also part of OU-1.

Site Geology and Hydrogeology: Soils beneath and around the active plant consist of fill and glacial till. Overburden soils generally extend ten to twenty feet below ground surface (bgs) and are underlain by bedrock composed of shale and limestone. Groundwater is encountered in both soil and bedrock and generally flows to the south across the site. Overburden groundwater is generally encountered at a depth of ten feet bgs.

Additional site details, including environmental and health assessment summaries, are available on NYSDEC's website at:

<http://www.dec.ny.gov/cfm/external/derexternal/haz/details.cfm?pageid=3&progno=336053>

State Superfund Program: New York's State Superfund Program (SSF) identifies and characterizes suspected inactive hazardous waste disposal sites. Sites that pose a significant threat to public health

and/or the environment go through a process of investigation, evaluation, cleanup and monitoring.

NYSDEC attempts to identify parties responsible for site contamination and require cleanup before committing State funds.

For more information about the SSF, visit: <http://www.dec.ny.gov/chemical/8439.html>

FOR MORE INFORMATION

Where to Find Information

Project documents are available at the following locations to help the public stay informed.

Middletown Thrall Public Library
11-19 Depot Street
Middletown, NY 10940
phone: (845) 341-5454

NYSDEC Region 3 Office
21 South Putt Corners Road
New Paltz, NY 12561
phone: (845) 256-3154 (please call for an appointment)

Who to Contact

Comments and questions are always welcome and should be directed as follows:

Project Related Questions

Keith Gronwald
Department of Environmental Conservation
Division of Environmental Remediation
625 Broadway
Albany, NY 12233-7014
(518) 402-9662
khgronwa@gw.dec.state.ny.us

Site Related Health Questions

Anthony Perretta
New York State Department of Health
Empire State Plaza Corning Tower, Room 1787
Albany, NY 12237
(518) 402-7880
BEEI@health.state.ny.us

We encourage you to share this fact sheet with neighbors and tenants, and/or post this fact sheet in a prominent area of your building for others to see.

Receive Site Fact Sheets by Email

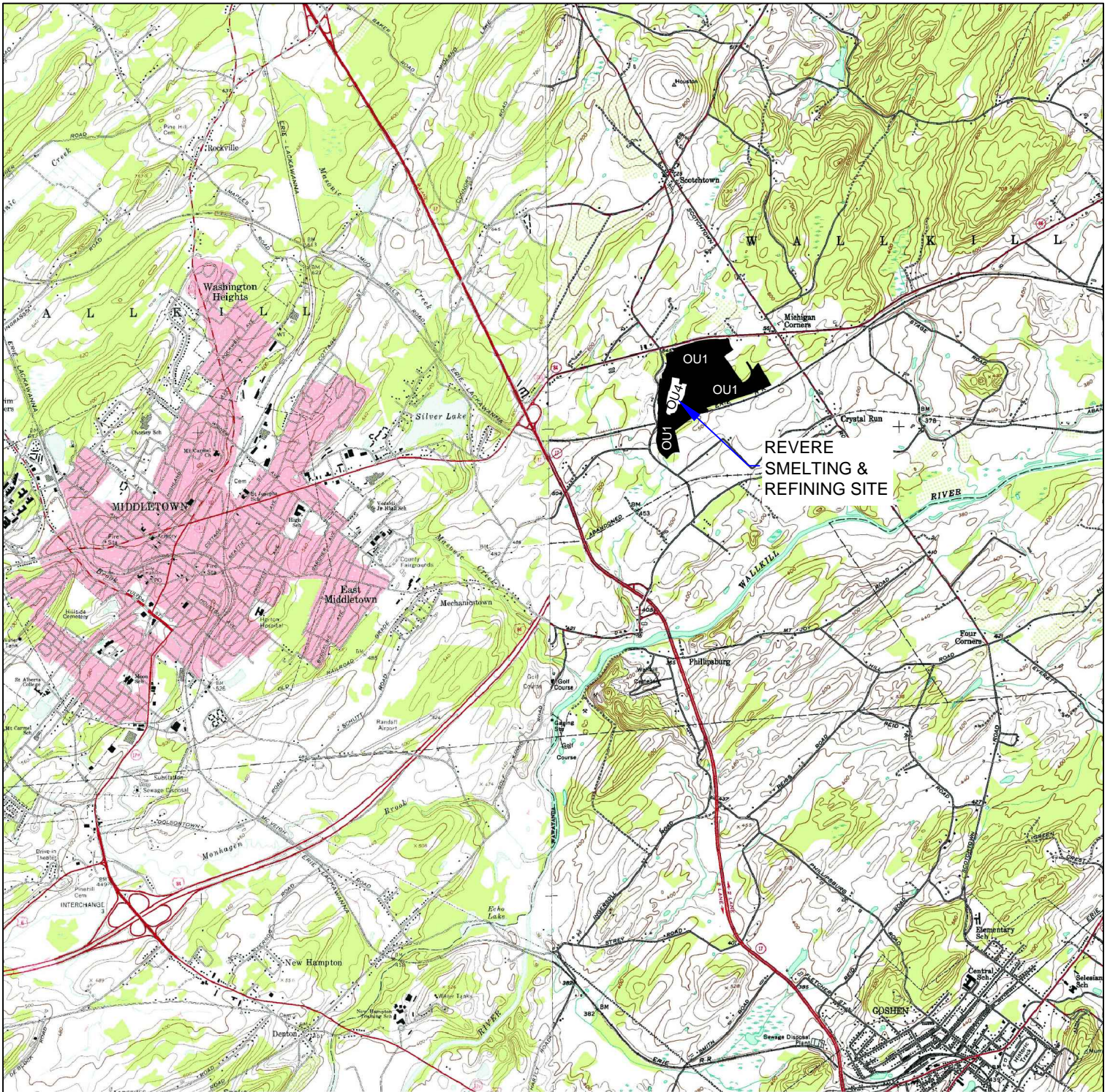
Have site information such as this fact sheet sent right to your email inbox.

NYSDEC invites you to sign up with one or more contaminated sites county email listservs available at the following web page:

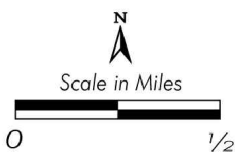
<http://www.dec.ny.gov/chemical/61092.html>. It's quick, it's free, and it will help keep you *better informed*.

As a listserv member, you will periodically receive site-related information/announcements for all contaminated sites in the county(ies) you select.

Note: Please disregard if you already have signed up and received this fact sheet electronically



After U.S.G.S. 7.5 Minute Topographic Quadrangles, Goshen and Middletown, New York, 1983.



SITE LOCATION MAP

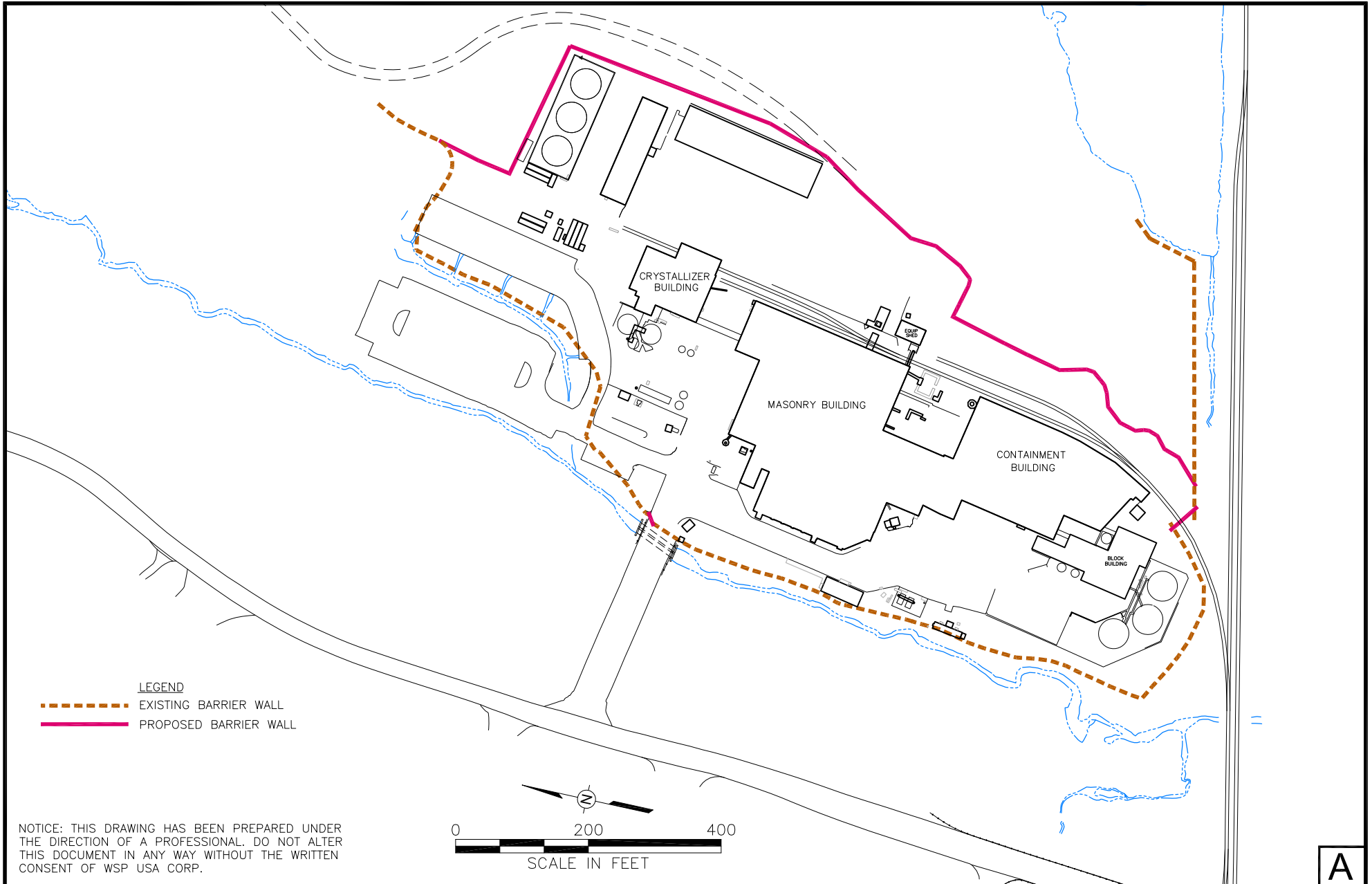
REVERE SMELTING &
REFINING SITE OU4
MIDDLETOWN, NY

FIGURE 1

NO.	DATE	REVISION	APP.



Scale: SEE DWG Drawn By: MA Checked By: JS Date: 06/2013



A



WSP USA Corp.
11190 Sunrise Valley Drive, Suite 300
Reston, Virginia 20191
(703) 709-6500
www.wspgroup.com/usa

Figure 1

PROPOSED BARRIER WALL

REVERE SMELTING & REFINING CORPORATION
MIDDLETOWN, NEW YORK

PREPARED FOR
RSR CORPORATION
DALLAS, TEXAS

Drawn By: EGC

Checked:

Approved: *ATW* 4/25/2014

DWG Name: 00040052-010