

Mr. Carl Hoffman
NYSDEC Central Office
625 Broadway 12th Floor
Albany, NY 12233

October 24, 2012

**Re: PCB Delineation Sampling
Cross County/Kessman Sanitation Landfill
Patterson, NY
NYSDEC Site No. 340011**

Dear Mr. Hoffman:

Pursuant your email dated October 24, 2012; Aztech has revised the PCB contaminant delineation plan for the Kessman Landfill Site. Attached for your review is an updated site map depicting the locations where PCBs were identified during sampling in April 2012.

An additional site map has been added showing the landfill's relation to the "Great Swamp of Patterson" and the location of the stream you requested we collect samples from.

Additionally we have computed the total amount of samples we anticipate to collect from each media and the analysis to be carried out by Test America, Inc. During the delineation sampling event, Aztech anticipates on collecting a total of 85 sediment samples to be analyzed for PCBs (9 Aroclors) and Total Organic Carbon as well as 10 surfacewater samples to be analyzed for PCBs (9 Aroclors) and Total Organic Carbon.

Lastly Aztech has revised our original cost estimate and provided one without the laboratory analysis.

Sediment Delineation Sampling Event Cost Estimate		
Mob/Demob/Per Diem	\$	785.55
Labor/Equipment (Two days)	\$	2,841.75
DUSR	\$	1,320.00
Reporting	\$	1,397.53
Total	\$	6,344.83

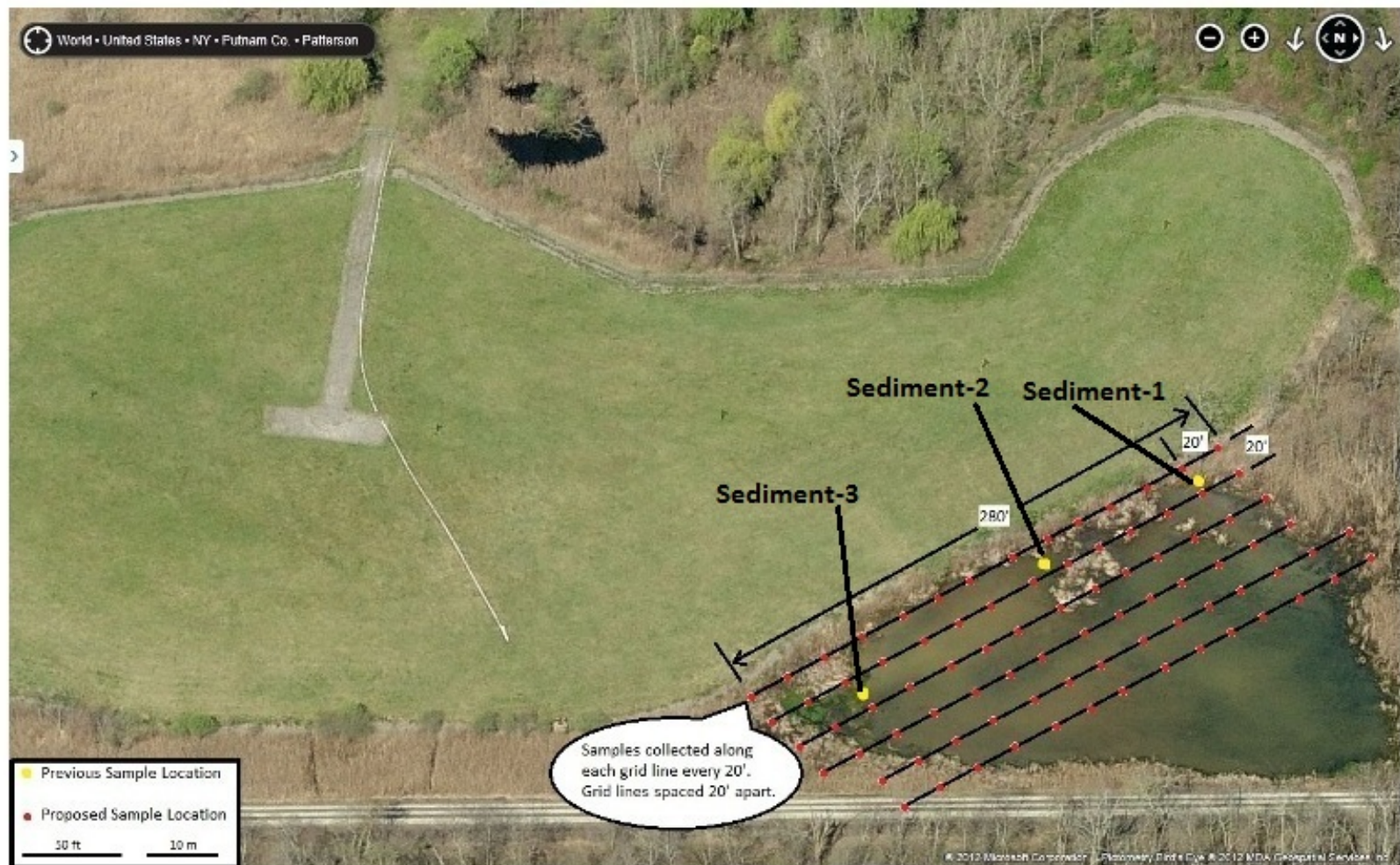
Aztech would like to conduct this delineation sampling plan prior to the winter season.

Please feel free to contact me with any questions.

Thank you,



Joseph J Sabanos
Project Manager
Aztech Technologies, Inc.
Attachments: Revised Site Maps



5 McCreia Hill Road
Ballston Spa
New York 12020

PH: 518-885-5383
Fax: 518-885-8385
www.aztechtech.com



NYSDEC - Cross County Sanitation Landfill

Site Number: 3-40-011

Patterson, Putnam County, New York

Map Source: Bing Maps - Bird's Eye View

Figure: Site map w/sample locations



- Surfacewater Wetland
- Approximate Landfill Limits
- Approximate limits of the Great Swamp
- Surface water and sediment sampling to confirm/deny PCB migration offsite into the Great Swamp



5 McCrea Hill Road
Ballston Spa
New York 12020

PH: 518-885-5383
Fax: 518-885-8385
www.aztechtech.com

N
I

NYSDEC - Cross County Sanitation Landfill

Site Number: 3-40-011

Patterson, Putnam County, New York

Map Source: Bing Maps - Bird's Eye View

Figure: Offsite Sample locations in river adjacent to the Great Swamp