



FACT SHEET

Manufactured Gas Plant Program

Receive Site Fact Sheets by **Email**. See “For More Information” to Learn How.

O&R Clove and Maple Avenues Former Manufactured Gas Plant Site
Site #3-44-049
Village of Haverstraw, NY
January 2012

Remedy Proposed for Former Manufactured Gas Plant Site Operable Unit 2 Public Comment Period and Public Meeting Announced

The public is invited to comment on the remedy proposed by the New York State Department of Environmental Conservation (NYSDEC) to address environmental impacts related to the Clove and Maple Former Manufactured Gas Plant (MGP) Site. The site is located at Clove and Maple Avenues, Village of Haverstraw, Rockland County. The site is divided into three operable units. An operable unit represents a portion of a site that can be addressed separately. Operable Unit 1 (OU1) is the on-site source area and drainage swale. OU1 is currently owned by O&R. OU2 consists of off-site properties including single family residential properties, an apartment complex, a portion of an alleyway, and a portion of Maple Avenue. OU3 consists of sediments in the Hudson River embayment located close to the site. See the attached map for the site and OU locations.

Public Meeting
January 19, 2012
7:00 pm

Alternate Date in the event of severe weather:
January 24, 2012
Haverstraw Village Hall
40 New Main Street
Haverstraw, NY

NYSDEC invites you to a public meeting to discuss the remedy proposed for this site. You are encouraged to provide comments at the meeting and during the 30-day comment period described in this fact sheet.

A remedy for OU1 was selected in March 2011. A proposed remedy for OU3 will be identified in separate cleanup plans.

The Proposed Remedy

The remedy proposed for OU2 includes a phased approach to excavating currently accessible soils that contain levels of contamination above the residential soil cleanup objectives and restoring the site with clean soil or replacing the existing pavement.

The proposed remedy is described in plan called a “Proposed Remedial Action Plan” (PRAP). It is available for public review at the locations identified below under “Where to Find Information”.

How to Comment

NYSDEC is accepting written comments about the proposed remedy for 30 days, from January 7 through February 6, 2012.

Submit written comments to: Mr. William Ports, P.E.
NYSDEC
625 Broadway
Albany, NY 12233-7014
email: wfports@gw.dec.state.ny.us

Summary of the Proposed Remedy

The proposed remedy for OU2 represents the alternative preferred by NYSDEC and the New York State Department of Health (NYSDOH) to address site impacts. The PRAP includes:

- excavation of approximately 30,000 cubic yards (CY) of impacted subsurface soil;
- installation of an underground barrier between impacted and clean soil after completion of the excavation;
- backfill with clean soil;
- groundwater monitoring to assess cleanup effectiveness; and
- development of a Site Management Plan to prevent exposure to remaining subsurface soil.

The proposed remedy was chosen following a detailed investigation of the site and evaluation of alternatives to address MGP impacts, called a “Remedial Investigation/Feasibility Study”. The proposed remedy would achieve the remediation goals for OU2 by permanently removing contaminated soil from the site. The proposed remedy would greatly reduce the source of MGP impacts to groundwater, and it would create the conditions needed to restore groundwater quality to the extent possible.

Next Steps

NYSDEC will consider public comments as it finalizes the remedy for the site. The selected remedy will be described in a document called a “Record of Decision” that will explain why the remedy was selected and respond to public comments. This document will be made available to the public (see “Where to Find Information” below). The project then moves to designing and performing the cleanup action to address the site contamination. NYSDEC will keep the public informed during the cleanup of the site.

Background

The Clove and Maple Avenues Manufactured Gas Plant (MGP) parcel, approximately one acre in size and is owned by Orange & Rockland Utilities, Inc. It began operations in the late 1800s and produced gas using the carbureted water gas method until approximately 1935 when natural gas began to be distributed. Former MGP structures were demolished in the 1960s and a retired gas regulator station is the only remaining structure on the fenced property. The gas regulator station was decommissioned by O&R in 2007. Adjacent land use includes residential and multi-family residential properties.

Orange & Rockland performed a series of environmental studies at the site and nearby properties, beginning with an initial assessment in 1996 and a Preliminary Site Assessment in 1997. The Remedial Investigation (RI) was initiated in 1998, with multiple phases of field work, analysis, and review. This investigation resulted in a series of reports, culminating in the DEC-approved Remedial Investigation Report (RIR) dated May 2009 (CMX, 2009) and Feasibility Study dated September 2011 which was updated in October 2011. DEC selected a remedy for the OU1 portion of the site in March 2011.

The primary contaminant of concern at this site is coal tar, a brownish to black substance with an odor similar to driveway sealer. Coal tar contains chemicals including polycyclic aromatic hydrocarbons (PAHs) and benzene, toluene, ethylbenzene, and xylene (BTEX).

FOR MORE INFORMATION

Where to Find Information

Project documents are available at the following locations to help the public to stay informed. These documents include the proposed cleanup plan for OU2, called the “Proposed Remedial Action Plan”, and the Remedial Investigation and Feasibility Study reports.

Haverstraw King’s Daughters Library
Rosman Center -10 West Ramapo Road
Garnerville, New York
(845) 786-3800
Hours: Mon - Thurs: 10:00 am - 9:00 pm
Friday: 10:00 am - 5:30 pm
Sat: 10 am - 5 pm, Sun: 1-5 pm

NYSDEC Region 3
Attn: Michael Knipfing
21 South Putt Corners Rd.
New Paltz, NY 12561
(845) 256-3154
M-F 9:00AM - 4:30PM

Who to Contact

Comments and questions are always welcome and should be directed to the following people:

Project Related Questions

William T. Ports, P.E.
NYSDEC
Division of Environmental Remediation
625 Broadway
Albany, NY 12233-7014
Phone: (518) 402-9662
Fax: (518) 402-9020
email: wfports@gw.dec.state.ny.us

Site-Related Health Questions

Anthony Perretta
NYSDOH
Bureau of Environmental Exposure
Investigation
547 River Street
Troy, NY 12180-2216
(518) 402-7880
email: beei@health.state.ny.us

To direct questions to Orange and Rockland Utilities, Inc., please contact:

Ms. Maribeth McCormick
Environmental Services
Orange & Rockland Utilities, Inc.
3 Old Chester Road
Goshen, NY 10924
(845)783-5534
e-mail: mccormickm@oru.com
Ms. Kim Campbell

Public Affairs Manager
Orange and Rockland Utilities, Inc.
One Blue Hill Plaza
Pearl River, NY 10965
(845) 577- 2539
e-mail: campbellk@oru.com

If you know someone who would like to be added to the site contact list, have them contact the NYSDEC project manager listed above. We encourage you to share this fact sheet with neighbors and tenants, and/or post this fact sheet in a prominent area of your building for others to see.

Receive Site Fact Sheets by Email

Have site information such as this fact sheet sent right to your email inbox.

NYSDEC invites you to sign up with one or more contaminated sites

county email listservs available at the following web page:

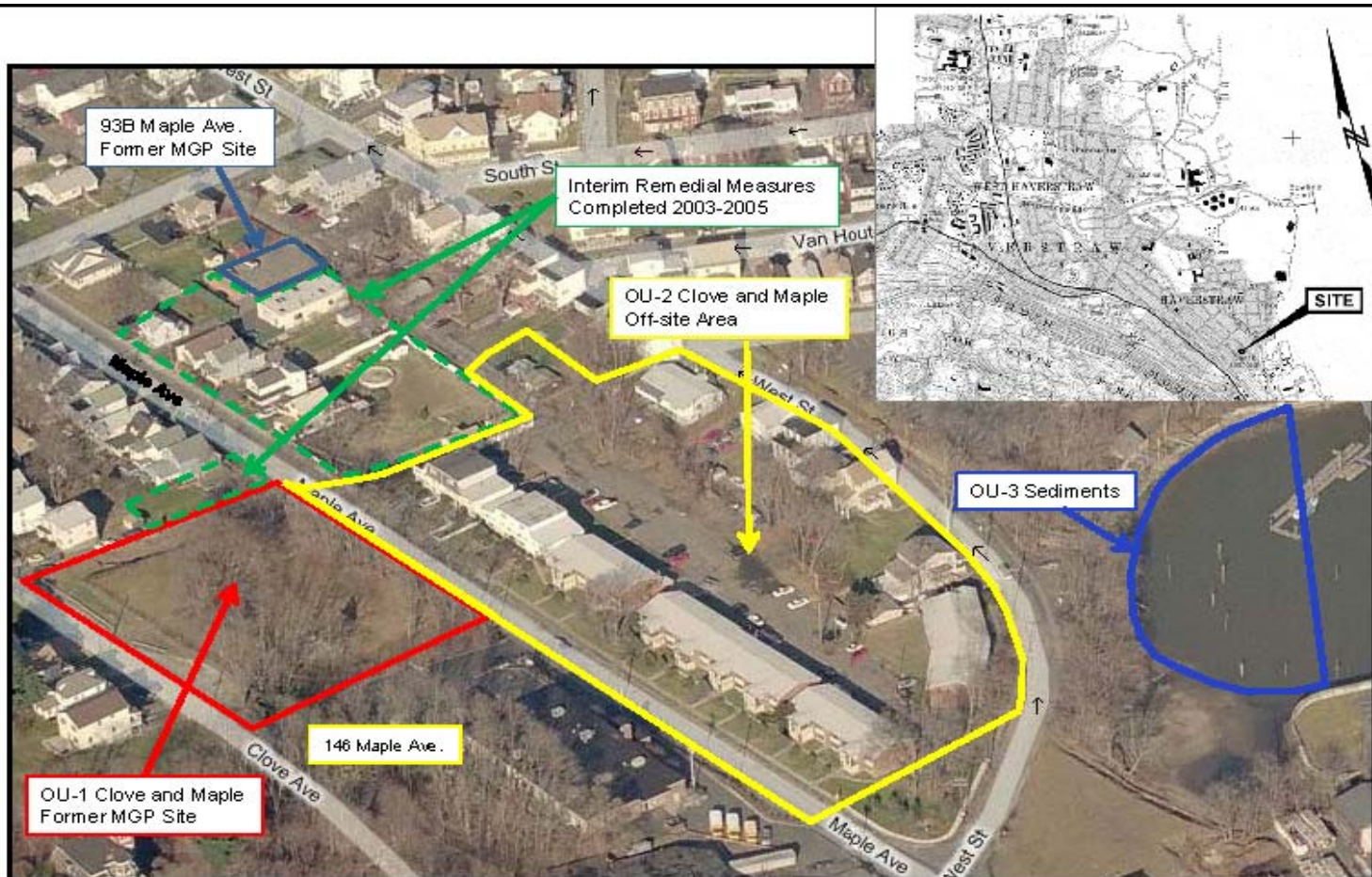
www.dec.ny.gov/chemical/61092.html . It's *quick*, it's *free*, and it will

help keep you *better informed*.

As a listserv member, you will periodically receive site-related information/announcements for all contaminated sites in the county(ies) you select.

You may continue also to receive paper copies of site information for a time after you sign up with a county listserv, until the transition to electronic distribution is complete.

Note: Please disregard if you already have signed up and received this fact sheet electronically.



CLOVE AND MAPLE FORMER MGP SITE
HAVERSTRAW, NEW YORK

ORANGE AND ROCKLAND UTILITIES, INC.

OU-1 AND OU-2
LOCATION AERIAL
PHOTOGRAPH

February 2011

Figure 1