

NOTICE OF PUBLIC AVAILABILITY SESSION

RAMAPO PAINT SLUDGE SITE
Inactive Hazardous Waste Disposal Site #344064

Wednesday, July 23, 2008
6:30 to 8:30 pm
in the
VILLAGE OF HILLBURN COMMUNITY ROOM
37 - 5th Street
Hillburn, NY

The New York State Department of Environmental Conservation (NYSDEC) and the New York State Department of Health (NYSDOH) have scheduled an Availability Session for the Ramapo Paint Sludge Site on the evening of Wednesday, July 23, 2008, beginning at 6:30 pm. It will be held at the Village of Hillburn Community Room, located at 37 - 5th Street in Hillburn, New York.

The Availability Session will enable citizens to meet project personnel in an informal setting and to ask questions about the Site Characterization Report and future remedial activities.

PLEASE NOTE: Since no formal presentation will be made, members of the public can arrive at any time between the hours of 6:30 pm and 8:30 pm.

The Site Characterization Report documents the activities and data collected to characterize the three operable units that make up this site. The enclosed fact sheet summarizes the information gathered and includes maps showing locations of the areas studied.

Copies of the Site Characterization Report and other site related documents are available for public review at the document repositories listed in the fact sheet.

If you have questions on the investigation or the availability session, contact:

Karen Maiurano, Project Manager, NYSDEC, 625 Broadway, Albany, NY 12233 at (518) 402-9662;
or

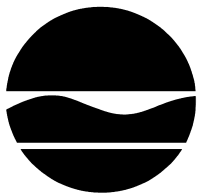
Michael J. Knipfing, Citizen Participation Specialist, NYSDEC- Region 3, New Paltz Office at (845) 256-3154.

For health-related concerns, contact:

Anthony Perretta, Project Manager, Bureau of Environmental Exposure Investigation, NYSDOH, 547 River Street, Troy, NY 12180, 1-800-458-1158 x27880; or

Catherine Quinn, Rockland County Health Department, 50 Sanatorium Road, Bldg. D, Pomona, NY 10970, (845)-364-2617

**NEW YORK STATE
DEPARTMENT OF**



**ENVIRONMENTAL
CONSERVATION**

A public availability session to discuss the Ramapo Paint Sludge Site will be held on Wednesday, July 23, 2008 at the Village of Hillburn Community Room 37 - 5th Street Hillburn, NY from 6:30 pm to 8:30 pm Representatives of DEC and DOH will be available to answer questions about the recently completed site characterization.

The Site Characterization Report is available for review at:

Finkelstein Memorial Library
Spring Valley, NY
**

Village of Hillburn
Village Clerk's Office
**

Town of Ramapo
Town Clerk's Office
**

NYSDEC Region 3 Office
New Paltz, NY

Complete addresses of the four document repositories are listed on the last page of this fact sheet.

For questions about the project, contact:

Ms. Karen Maiurano
NYSDEC Project Manager
Division of Environmental
Remediation
625 Broadway, 11th Floor
Albany, NY 12233-7014
(518) 402-9662

FACT SHEET

Ramapo Paint Sludge Site

Town of Ramapo, Rockland County
Site No. 344064

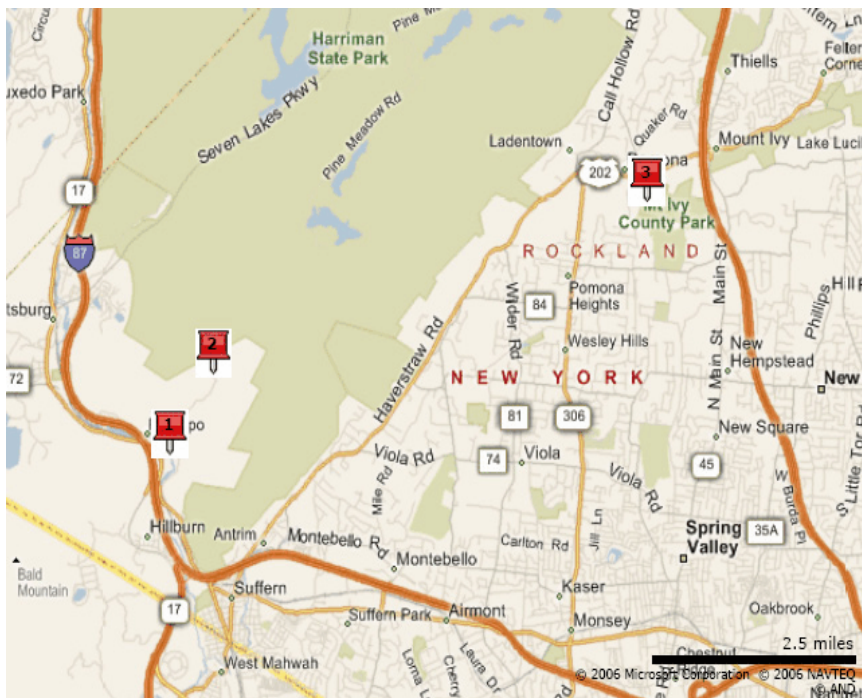
July 2008

Site Characterization Report Available

The New York State Department of Environmental Conservation (DEC), in consultation with the New York State Department of Health (DOH), is providing this fact sheet as part of the State's citizen participation program for inactive hazardous waste disposal sites. The DEC encourages public involvement in the cleanup program for hazardous waste sites and invites comments or questions on the environmental investigation at the Ramapo Paint Sludge sites.

Background

In March 2006 Ford Motor Company (Ford) signed an Order on Consent with the DEC to investigate three paint sludge disposal locations in Rockland County. The three locations, also called operable units or OUs, are: OU1- the North of Ramapo Wellfield; OU2- areas along the Torne Valley Road; and OU3- a wooded area in Pomona (see figure below). In mid-2006, the DEC approved a Site Characterization Work Plan to determine the extent of paint sludge deposits at these three OUs and determine if there are environmental impacts. These activities have now been completed and the results are presented in the Site Characterization Report.



Ramapo Paint Sludge Sites

Site Characterization Results

Site characterization activities were conducted during 2006 and 2007. The site reconnaissance surveys began in early 2006 and covered more than 80 acres at all three OUs. The reconnaissance surveys were conducted along pre-established grid lines, recording observations of all types of waste, disturbed vegetation and/or suspect terrain. In addition, test pit excavations, surface water and sediment sampling, monitoring well installations and groundwater sampling were conducted.

Paint sludge waste on the ground surface commonly appears as irregularly-shaped chunks of hardened gray material. Paint waste can also occur as old flow areas that may extend several feet over the ground or may be buried in trenches up to several feet thick. At depth it is somewhat pliable and occasionally has a paint odor.

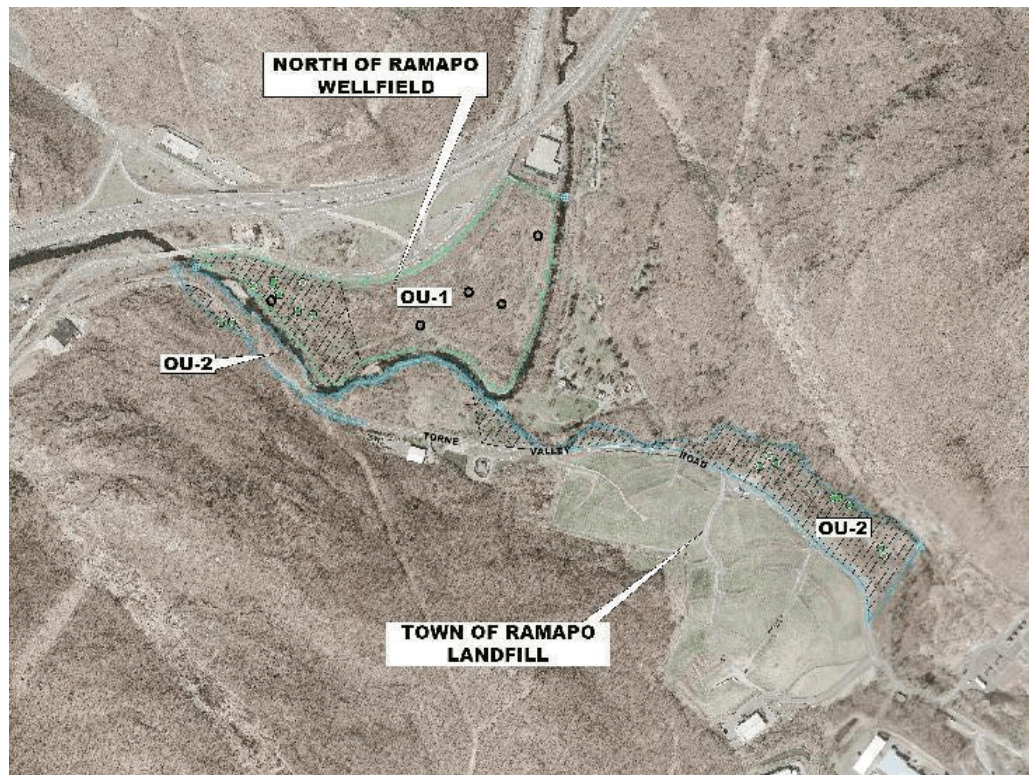
Because each of the three OUs are distinct, the results from each are summarized separately below. Aerial photos showing each OU are included in this fact sheet. More detailed information can be found in the Site Characterization Report at the document repositories listed in this fact sheet.

OU 1 (the North of Ramapo Wellfield): The reconnaissance survey conducted at OU 1 covered 40 acres north of Hillburn between the Ramapo River, Bridge Street, and the railroad tracks. Paint sludge was observed primarily in the southern five acres of the study area. Other types of waste were encountered scattered over most of the OU, including household waste, discarded white goods and automobiles, and industrial slag not believed to be associated with paint sludge waste.

Test pits were excavated to determine if identified surficial paint sludge extends below the ground surface. In several locations paint sludge was seen at depth. Surface water and sediment samples were collected from the Ramapo River upstream, downstream and adjacent to the study area and analyzed. Surface water samples showed no site related contamination above applicable standards. Some sediment samples, including those collected upgradient of paint sludge observations, contained polycyclic aromatic hydrocarbons, or PAHs.

PAHs are common byproducts from combustion of organic material. It is not unusual to see these products in an urban area. Some metals of interest, including lead, copper and arsenic were also seen in the sediment, in both upstream and downstream samples.

Three shallow groundwater monitoring wells were installed to determine if the buried paint sludge waste has impacted groundwater. Groundwater sample results from the wells indicate that groundwater is not impacted by the paint sludge waste.



Aerial view of OU1: North of Ramapo Wellfield and OU 2: Torne Valley Rd

OU 2 (along Torne Valley Road): The OU2 reconnaissance survey covered approximately 50 acres along Torne Valley Road. A small, isolated area of paint sludge waste was observed on a bedrock outcrop about one-quarter mile north of the intersection with Route 59. Small pieces of paint sludge were observed in several locations at the Joseph T. St. Lawrence Community, Health and Sports Center that was under construction during the study period. Small pieces of paint sludge were also observed in a large soil pile that had been stockpiled from pre-construction site grading. Samples from the stockpiled soil containing pieces of paint sludge were analyzed and found to be non-hazardous. At DEC's request, Ford removed and properly disposed of the soil at an appropriate off-site facility and provided clean fill to the Town.

At the northern end of the road between the Town of Ramapo Landfill and Torne Brook numerous paint sludge deposits were documented. Paint sludge occurs as old flows in several locations and as hardened chunks in other locations. Test pits confirmed the presence of old paint sludge flows below ground. Other types of waste were also observed above and below ground including construction materials, domestic waste and white goods.

Several chunks of paint sludge were identified in Torne Brook during the reconnaissance survey. To eliminate the possibility of further impacts to the brook, these pieces were removed when found and placed into drums. The paint sludge waste was shipped to an appropriate offsite disposal facility.

Five surface water and three sediment samples were collected upstream and downstream from Torne Brook, including locations where paint sludge pieces had been removed. In the downstream sediment sample PAHs were detected slightly above screening levels. Some heavy metals, including lead, were identified in all three sediment samples. No organic compounds or heavy metals were detected above guidance values in Torne Brook surface water.

Two shallow groundwater monitoring wells were installed to determine if the buried paint sludge waste has impacted groundwater, and sampling results indicate that there are no impacts.

OU 3 (a wooded area near Camp Hill Road in Pomona): OU 3 is located roughly 6 miles northeast of the other OUs, at the northwestern edge of Mt. Ivy Park, adjacent to a residential development. The reconnaissance survey in this area covered approximately 2½ acres, and identified a substantial amount of miscellaneous debris and refuse, as well as chunks of paint sludge waste. Several test pits were excavated, one of which identified a paint sludge flow at depth that may extend beneath the berm of the pond. Pieces of paint sludge present on the ground surface were removed during the reconnaissance survey and placed into drums. The paint sludge waste was shipped to an appropriate offsite disposal facility.

Surface water and sediment were sampled from the pond and the stream that flows out of the pond. No organic compounds were detected in the surface water, and iron was the only metal that exceeded surface water standards. Lead exceeded screening criteria in the sediment sample collected from the stream flowing out of the pond. Shallow groundwater monitoring wells installed near the paint sludge deposits do not show any impacts to groundwater.



OU 3 - near Camp Hill Road in Pomona

What's Next

Ford is beginning a Feasibility Study to evaluate alternatives to remediate the paint sludge waste deposits. Potential alternatives range from no action (as required by NYS guidance) to excavation of some or all of the paint sludge waste, as well as capping options for any waste that may remain. No cleanup decisions have been made, and public comment will be sought prior to making any decisions.

An informal public availability session to discuss the Ramapo Paint Sludge Site will be held on Wednesday, July 23, 2008 at the Village of Hillburn Community Room, 37 - 5th Street in Hillburn from 6:30 pm to 8:30 pm. Representatives of DEC, NYSDOH, Rockland County DOH and Ford will be available to discuss the site characterization results and answer questions about the investigation and cleanup options.

For More Information

The March 2006 Order on Consent, the Site Characterization Work Plan, the Citizen Participation Plan and the Site Characterization Report are available at the site document repositories listed below. If you would like more information about this project, you are invited to visit the document repositories that have been established for this project at these locations. Please call ahead for hours and to make an appointment, if required.

Finkelstein Memorial Library
24 Chestnut Street
Spring Valley, NY 10977
(845) 352-5700

Village of Hillburn
Village Hall
31 Mountain Ave
Hillburn, NY 10931
(845) 357-2036

Town of Ramapo
Town Clerk's Office
237 Route 59
Suffern NY 10901
(845) 357-5100 ext. 263

NYSDEC Region 3 Office
21 South Putt Corners Road
New Paltz, NY 12561
(845) 256-3154

The DEC encourages residents with specific knowledge of other paint sludge disposal areas to notify any of the following project personnel:

Ms. Karen Maiurano
NYSDEC Project Manager
Division of Environmental Remediation
625 Broadway, 11th Floor
Albany, NY 12233-7014
(518) 402-9662

Mr. Anthony Perretta
NYSDOH Public Health Specialist
Flanigan Square
547 River Street
Troy, NY 12180
1-800-458-1158, ext. 27880

Catherine Quinn
Rockland County Dept of Health
50 Sanatorium Road, Building D
Pomona, NY 10970
845-364-2617