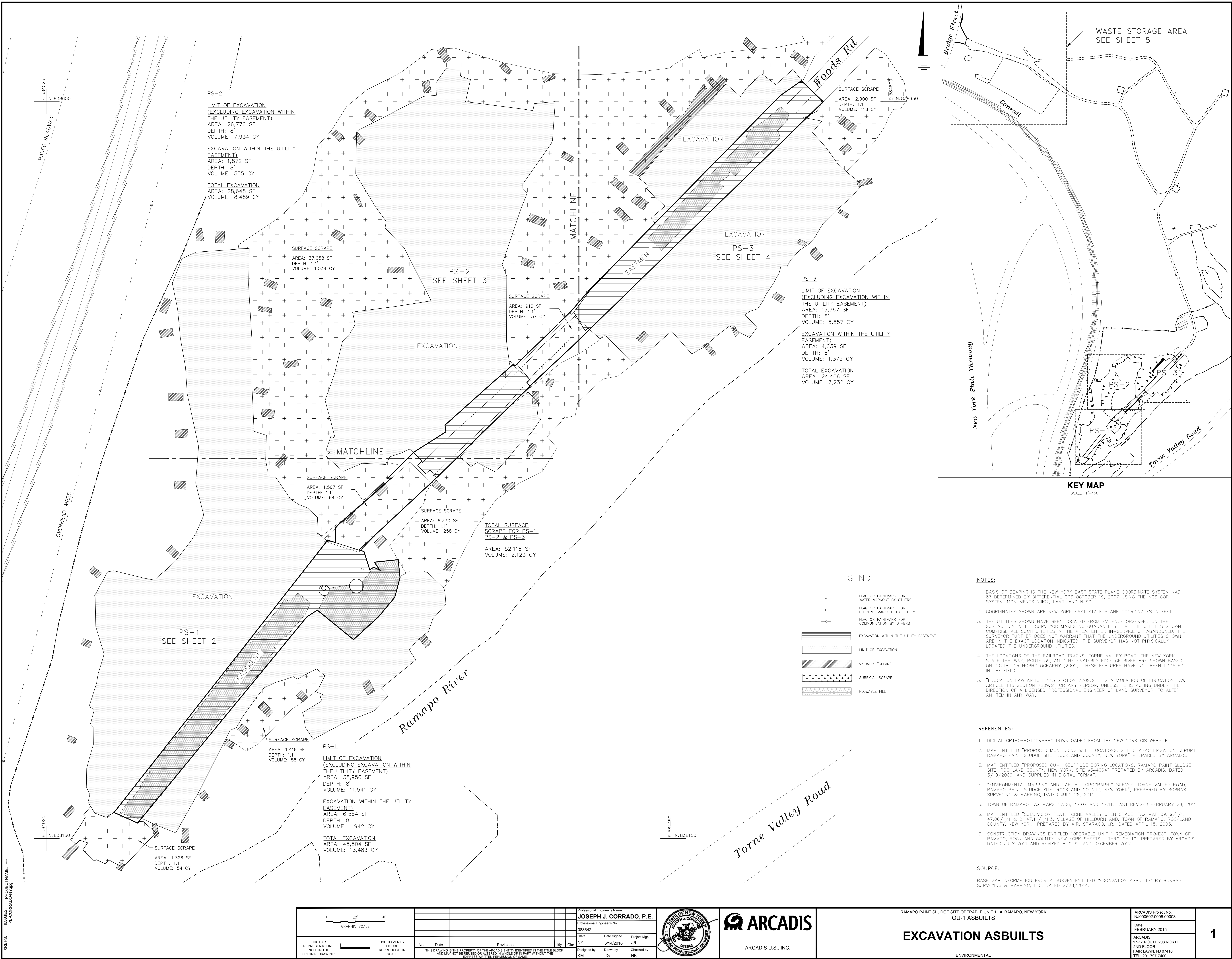


CITY: DINGHOUSE; DB: LD; PLOT: FE; TITLE: ASBULTS; REF: OFF; UNITS: FEET; DRAWING NO: 17-17; PROJECT NAME: RAMAPO PAINT SLUDGE SITE OPERABLE UNIT 1 REMEDIATION; DATE: 6/14/2016 11:35 AM; ARCHITECT: 19 18 18 (LMS TECH); PLOT: 6/14/2016 11:35 AM; BY: STEINBERGER; PAGESETUP: PLOTSTYLETABLE: ARCADIS.MHW/MTB; PLOTTED: 6/14/2016 11:35 AM; BY: STEINBERGER.



0 20' 40'	
GRAPHIC SCALE	
THIS BAR REPRESENTS ONE INCH ON THE ORIGINAL DRAWING.	USE TO VERIFY FIGURE REPRODUCTION SCALE.

No.	Date	Revisions	By	Clud

Professional Engineer's Name JOSEPH J. CORRADO, P.E.		
Professional Engineer's No. 083842		
State NY	Date Signed 6/14/2016	Project Mgr. JR
Designed by KM	Drawn by JG	Checked by NK



<p>RAMAPO PAINT SLUDGE SITE OPERABLE UNIT 1 - RAMAPO, NEW YORK</p> <p>OU-1 ASBULTS</p> <p>EXCAVATION ASBULTS</p> <p>ENVIRONMENTAL</p>	<p>ARCADIS Project No. NJ000602-0005-00003</p> <p>Date FEBRUARY 2015</p> <p>ARCADIS 17-17 ROUTE 208 NORTH 2ND FLOOR FAIR LAWN NJ 07410 TEL: 201-787-7400</p>	<p>1</p>
---	--	----------

CITY: DIVISION: DR: LD: PC: RM: TM: LYON: OFF: REF: PROJECT: 17-17 ROUTE 208 NORTH, 2ND FLOOR, FAIR LAWN, NJ 07410
 COUNTY: ESSEX: PROJECT: ASBULTS #2 CELL ASBULTS #2
 DRAWING: ASBULTS #2 CELL ASBULTS #2
 DATE: 6/14/2016 11:35 AM
 FILE: C:\PROJECTS\17-17 ROUTE 208 NORTH\ASBULTS #2 CELL ASBULTS #2\ASBULTS #2 CELL ASBULTS #2.dwg
 PLOT: 6/14/2016 11:35 AM
 PLOTTER: ARCADIS\HP\HP DesignJet 5000
 PLOTTED: 6/14/2016 11:35 AM
 BY: STEINBERGER, JACQUELINE



MATCHLINE SEE SHEET 4

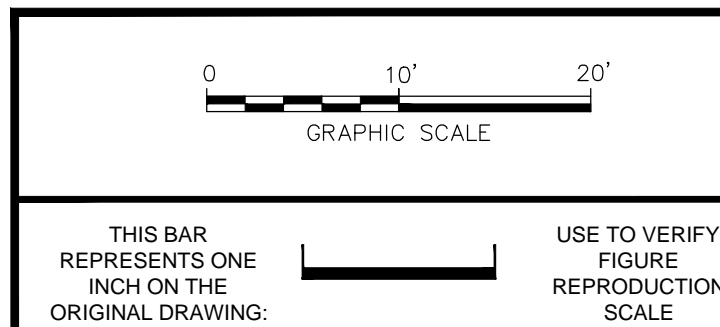
MATCHLINE SEE SHEET 2

LEGEND

- FLAG OR PAINTMARK FOR WATER MARKOUT BY OTHERS
- FLAG OR PAINTMARK FOR ELECTRIC MARKOUT BY OTHERS
- FLAG OR PAINTMARK FOR COMMUNICATION BY OTHERS
- EXCAVATION WITHIN THE UTILITY EASEMENT
- LIMIT OF EXCAVATION
- VISUALLY "CLEAN"
- SURFICIAL SCRAPE
- FLOWABLE FILL

SEE SHEET 1 FOR NOTES

SOURCE:
 BASE MAP INFORMATION FROM A SURVEY ENTITLED "EXCAVATION ASBULTS" BY BORBAS SURVEYING & MAPPING, LLC, DATED 2/28/2014.



No.	Date	Revisions	By	Clkd

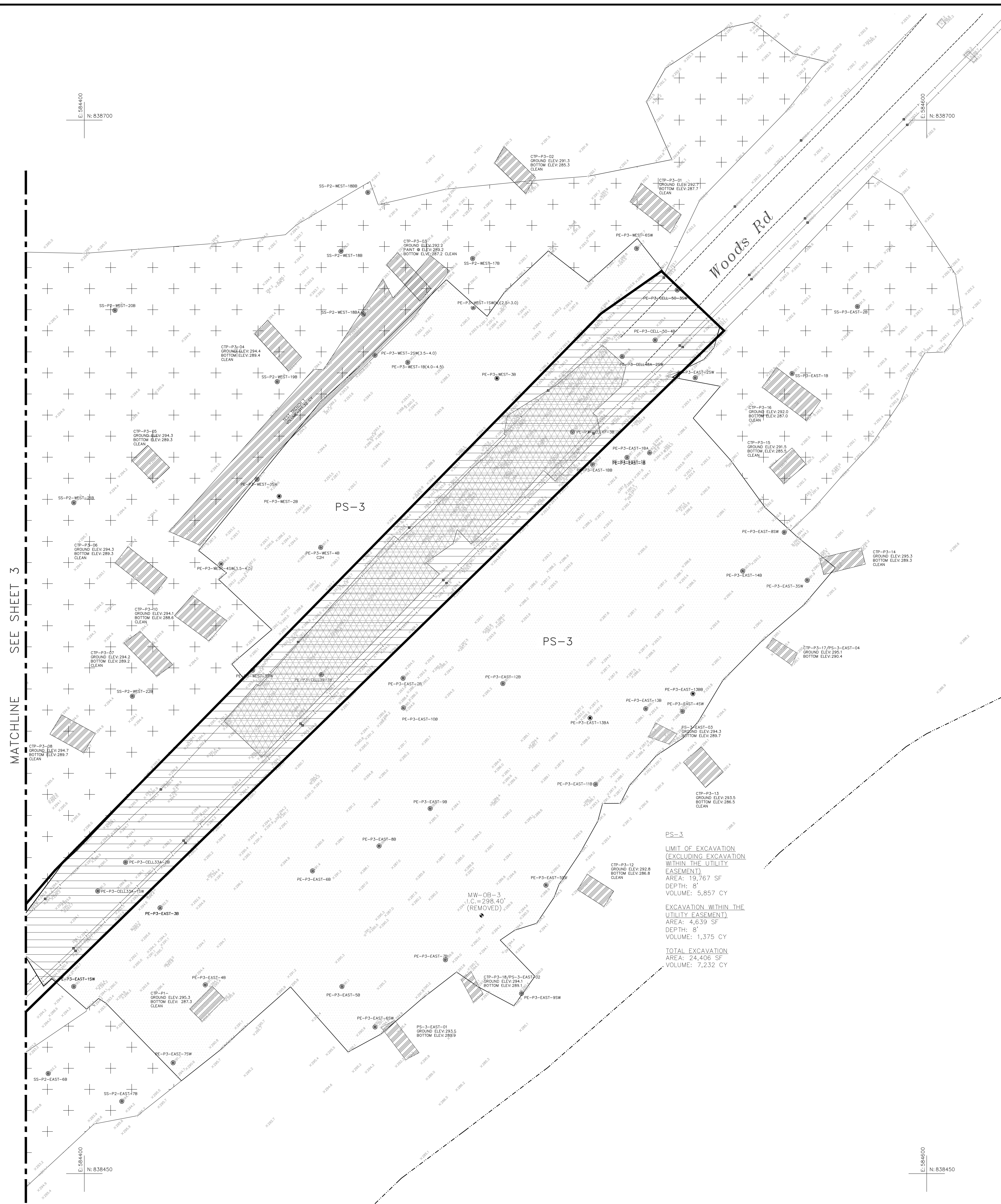
Professional Engineer's Name
JOSEPH J. CORRADO, P.E.
 Professional Engineer's No.
 083842
 State
 NY
 Date Signed
 6/14/2016
 Project Mgr.
 JR
 Drawn by
 JG
 Checked by
 NK
 Designed by
 KM



RAMAPO PAINT SLUDGE SITE OPERABLE UNIT 1 • RAMAPO, NEW JERSEY
 OU-1 ASBULTS
EXCAVATION #2 CELL ASBULTS
 ENVIRONMENTAL

ARCADIS Project No.
 NJ000602.0005.00003
 Date
 FEBRUARY 2015
 ARCADIS
 17-17 ROUTE 208 NORTH,
 2ND FLOOR
 FAIR LAWN, NJ 07410
 TEL: 201-797-7400

CITY: DUNELAND, NJ; COUNTY: MERCER; PROJECT: RAMAPO PAINT SLUDGE SITE OPERABLE UNIT 1 - ASBULTS; DRAWING: EXCAVATION #3 CELL ASBULTS; DATE: 6/14/2016; TIME: 11:35 AM; PROJECT MANAGER: JOSEPH J. CORRADO, P.E.; DESIGNER: JAMES J. GIBSON, P.E.; CHECKER: JAMES J. GIBSON, P.E.; APPROVER: JAMES J. GIBSON, P.E.; SOURCE: BASE MAP INFORMATION FROM A SURVEY ENTITLED "EXCAVATION ASBULTS" BY BORBAS SURVEYING & MAPPING, LLC, DATED 2/28/2014.



PS-3
 LIMIT OF EXCAVATION
 (EXCLUDING EXCAVATION
 WITHIN THE UTILITY
 EASEMENT)
 AREA: 19,767 SF
 DEPTH: 8'
 VOLUME: 5,857 CY

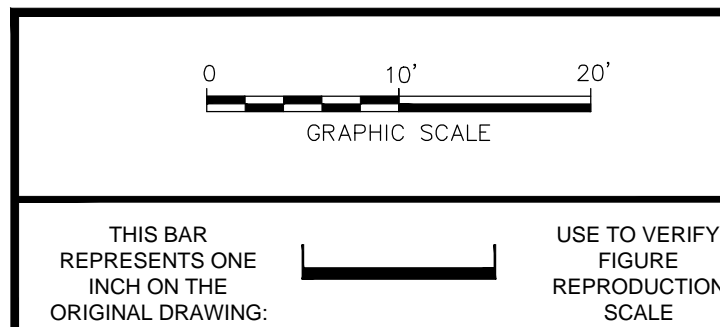
 EXCAVATION WITHIN THE
 UTILITY EASEMENT)
 AREA: 4,639 SF
 DEPTH: 8'
 VOLUME: 1,375 CY

TOTAL EXCAVATION
 AREA: 24,406 SF
 VOLUME: 7,232 CY

- LEGEND**
- MONITORING WELL
 - FLAG OR PAINTMARK FOR WATER MARKOUT BY OTHERS
 - FLAG OR PAINTMARK FOR ELECTRIC MARKOUT BY OTHERS
 - FLAG OR PAINTMARK FOR COMMUNICATION BY OTHERS
 - EXCAVATION WITHIN THE UTILITY EASEMENT
 - LIMIT OF EXCAVATION
 - VISUALLY "CLEAN"
 - SURFICIAL SCRAPE
 - FLOWABLE FILL

SEE SHEET 1 FOR NOTES

SOURCE:
 BASE MAP INFORMATION FROM A SURVEY ENTITLED "EXCAVATION ASBULTS" BY BORBAS SURVEYING & MAPPING, LLC, DATED 2/28/2014.



No.	Date	Revisions	By	Clkd

Professional Engineer's Name
JOSEPH J. CORRADO, P.E.
 Professional Engineer's No.
 083642
 State
 NY
 Date Signed
 6/14/2016
 Project Mgr.
 JR
 Designed by
 JG
 Checked by
 NK



RAMAPO PAINT SLUDGE SITE OPERABLE UNIT 1 • RAMAPO, NEW YORK
 OU-1 ASBULTS
EXCAVATION #3 CELL ASBULTS
 ENVIRONMENTAL

ARCADIS Project No.
 NJ000602.0005.00003
 Date
 FEBRUARY 2015
 ARCADIS
 17-17 ROUTE 208 NORTH
 FAIR LAWN, NJ 07410
 TEL. 201-797-7400

CITY: DINGBOURGE, DR: LD, PLOT: JG, TIA: LVR ON: OFF, REF: ...
 C:\Users\jcorrado\OneDrive\Documents\ASBULTS\ASBULTS.dwg LAYOUT: 5, SAVED: 6/14/2016 11:35:58 AM, ACADVER: 19.15 (LMS TECH), PAGESETUP: ... PLOTSTYLETABLE: ARCADIS-MANUAL.ctb, PLOTTED: 6/14/2016 11:39:41 AM, BY: STEINBERGER, GEORGE, PROJECTNAME: ... ARRES: FE-CORRADO\JG

E: 835425
N: 840400

E: 839950
N: 840400

Bridge Street

PS-3


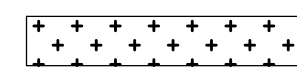

Conrail

PS-3
WSA-2 EXCAVATION
AREA: 656 SF
DEPTH: 2.1'
VOLUME: 51 CY

WSA-1 EXCAVATION
AREA: 1,258 SF
DEPTH: 1.1'
VOLUME: 51 CY

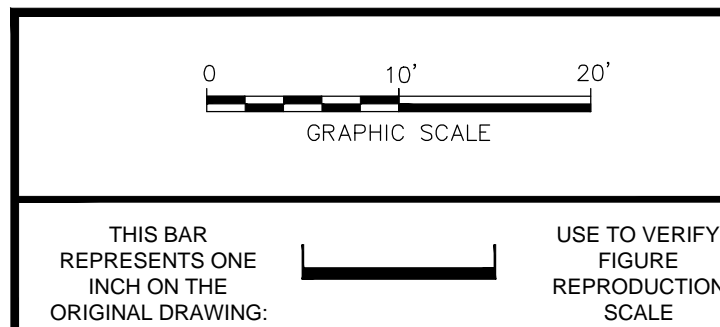
SURFACE SCRAPE FOR WASTE STORAGE AREA
AREA: 51,735 SF

LEGEND

-  LIMIT OF EXCAVATION
-  SURFICIAL SCRAPE
-  TEMPORARY CONTROL POINT LOCATION

SEE SHEET 1 FOR NOTES

SOURCE:
BASE MAP INFORMATION FROM A SURVEY ENTITLED "EXCAVATION ASBULTS" BY BORBAS SURVEYING & MAPPING, LLC, DATED 2/28/2014.



No.	Date	Revisions	By	Chd

Professional Engineer's Name
JOSEPH J. CORRADO, P.E.
Professional Engineer's No.
083842

State: NY
Date Signed: 6/14/2016
Project Mgr: JR
Designed by: KM
Drawn by: JG
Checked by: NK



RAMAPO PAINT SLUDGE SITE OPERABLE UNIT 1 • RAMAPO, NEW YORK
OU-1 ASBULTS
**SURFACE SCRAPE
WASTE STORAGE AREA ASBULTS**
ENVIRONMENTAL

ARCADIS Project No.
NJ000602.0005.00003
Date:
FEBRUARY 2015
ARCADIS
17-17 ROUTE 208 NORTH,
2ND FLOOR
FAIR LAWN, NJ 07410
TEL: 201-787-7400