

DOCUMENTATION OF ENVIRONMENTAL INDICATOR DETERMINATION

RCRA Corrective Action Environmental Indicator (EI) RCRAInfo Code (CA750) Migration of Contaminated Groundwater Under Control

Facility Name: Avery Dennison - Information and Brand Management
Facility Address: 524 Route 303, Orangeburg, New York 10962
Facility EPA ID #: NYD056303266

Definition of Environmental Indicators (for the RCRA Corrective Action)

Environmental Indicators (EI) are measures being used by the RCRA Corrective Action program to go beyond programmatic activity measures (e.g., reports received and approved, etc.) to track changes in the quality of the environment. The two EI developed to-date indicate the quality of the environment in relation to current human exposures to contamination and the migration of contaminated groundwater.

Definition of “Migration of Contaminated Groundwater Under Control” EI

A positive “Migration of Contaminated Groundwater Under Control” EI determination (“YE” status code) indicates that the migration of groundwater has stabilized, and that monitoring will be conducted to confirm that contaminated groundwater remains within the original “area of contaminated groundwater” (for all groundwater “contaminated” subject to RCRA corrective action at or from the identified facility (i.e., site-wide)).

Relationship of EI to Final Remedies

While Final remedies remain the long-term objective of the RCRA Corrective Action program the EI are near-term objectives which are currently being used as Program measures for the Government Performance and Results Act of 1993, GPRA). The “Migration of Contaminated Groundwater Under Control” EI pertains ONLY to the physical migration (i.e., further spread) of contaminated ground water and contaminants within groundwater (e.g., non-aqueous phase liquids or NAPLs). Achieving this EI does not substitute for achieving other stabilization or final remedy requirements and expectations associated with sources of contamination and the need to restore, wherever practicable, contaminated groundwater to be suitable for its designated current and future uses.

Duration / Applicability of EI Determinations

EI Determinations status codes should remain in RCRAInfo national database ONLY as long as they remain true (i.e., RCRAInfo status codes must be changed when the regulatory authorities become aware of contrary information).

**Migration of Contamination Groundwater Under Control
Environmental Indicator (EI) RCRAInfo code (CA750)**

Page 2

1. Has **all** available relevant/significant information on known and reasonably suspected releases to the groundwater media, subject to RCRA Corrective Action (e.g., from Solid Waste Management Units (SWMU), Regulated Units (RU), and Areas of Concern (AOC)), been **considered** in this EI determination?

If yes - check here and continue with #2 below.

If no - re-evaluate existing data, or

If data is not available, skip to #8 and enter "IN" (more information needed) status code.

BACKGROUND

The Avery Dennison-Orangeburg Facility (the Site) is located on an 8.3-acre parcel at 524 Route 303 in Orangeburg, Rockland County, New York. The Site includes two structures. The primary structure is a 55,000 square-foot facility that houses office space, warehouse space, and manufacturing operations used for the coating and finishing of fabrics. Asphalt parking is located adjacent to the manufacturing facility on the south and east sides. The area west of the manufacturing facility contains an open-sided storage structure, three active USTs, and a UST loading area consisting of a concrete pad with secondary spill containment. The area of the Site north of the manufacturing facility includes a thermal oxidizer, a grass-covered lawn area, and a wooded area. A small unnamed tributary stream lies along the northern and northeastern boundaries of the Site, and flows eastward off of the Site and under Route 303 toward Sparkill Creek.

Land use surrounding the Site is generally mixed and includes commercial, industrial, and residential properties, in addition to vacant and wooded areas. The Site is bordered by a medical supplies manufacturer (Instrumentation Laboratory Company) to the north; commercial and residential buildings across Route 303 to the east; an automobile maintenance and car wash facility to the south; a church to the southwest; and a plastic and glass recycling plant beyond a set of railroad tracks to the west. The Site and surrounding area are serviced by public water and sewer. The site location is shown on Figure 1-1. A figure showing the layout of the property is included as Figure 2-1.

The manufacturing facility was reportedly constructed in the 1950s or 1960s and was initially operated by Spencer Packaging Company. Beginning in 1976, Paxar (then named Packaging Systems Corporation) operated at the facility. Historical chemical use at the Site included solvents, solvent-based coatings and coating additives, lubricant and machine oils, research and development chemicals, and small-scale quantities of maintenance and cleaning supplies. A USEPA Resource Conservation and Recovery Act (RCRA) Database record for the Site dated June 6, 2006 lists the following chlorinated solvents: PCE, TCE, 1,1,1-trichloroethane (1,1,1-TCA), and methylene chloride, as components of hazardous wastes generated at the Site.

In 1998 seven USTs were removed from the property in response to a release of MEK from a former 10,000-gallon UST. The MEK release was reported to NYSDEC and Rockland County Department of Health (RCDOH) in February 1997 (Spill Number 96-13214). A subsurface investigation was performed afterwards in February 1997 in the area south of the former USTs. Concentrations of MEK, toluene, acetone, and xylene were detected in soil samples; maximum reported concentrations of those analytes in

**Migration of Contamination Groundwater Under Control
Environmental Indicator (EI) RCRAInfo code (CA750)**

Page 3

soil were 1,700; 2,000; 2,400 and 13 micrograms per kilogram ($\mu\text{g}/\text{kg}$), respectively. MEK and toluene were also detected in a water sample at concentrations of 280,000 and 35,000 micrograms per liter ($\mu\text{g}/\text{L}$), respectively.

The seven USTs were removed and contaminated soils were excavated in May and June of 1998. Among the seven USTs removed was a 275-gallon UST that was identified as a possible waste solvent tank. Composite soil samples were collected from the excavation limits and analyzed for MEK, toluene, and isopropyl alcohol. Additional soils were excavated south of the former UST area, and clean fill was used to backfill the excavation, the limits of which had been defined by analytical results of soil samples. The open spill was closed by NYSDEC in May 1999. Three registered USTs were installed in 1998 to store the solvents that are used in bulk quantities at the Site: 2-butanone or methyl ethyl ketone (MEK) (10,000-gallon), toluene (10,000-gallon), and isopropyl alcohol (5,000-gallon).

Avery Dennison Corporation (ADC) acquired the Property as part of its acquisition of Paxar Corporation (Paxar) in June 2007 and has continued to use the Site for the coating and finishing of fabrics. Current operations at the Property consist of fabric coating and associated finishing operations including ironing, slitting, cutting, and tubing of fabric in preparation for off-site label printing. Supporting warehousing, facility maintenance, shipping/receiving, and office operations are also performed at the Site. The manufacturing facility is registered as a Large Quantity Generator of hazardous waste, with waste streams including spent coatings (solvent and water-based) and waste solids (i.e., drum liners, rags, etc.).

Investigations were conducted at the Site from 2007 through 2014 that included a Phase I environmental site assessment (ESA), followed by the collection and analysis of soil, groundwater, and sub-slab soil gas samples and hydrogeologic characterization of the Site. The Phase I ESA identified volatile organic compounds (VOCs) as the primary contaminants of concern at the Site. The primary VOCs utilized at the Site since the 1970s were MEK, toluene, and isopropyl alcohol. An initial subsurface investigation was performed to evaluate soil and groundwater at several areas of concern (AOCs). Additional investigations were conducted to further assess the hydrogeologic conditions at the Site and characterize the nature and extent of VOCs present in the on-site groundwater and sub-slab soil gas beneath the manufacturing facility floor.

2. Is **groundwater** known or reasonably suspected to be “**contaminated**”¹ above appropriately protective “levels” (i.e., applicable promulgated standards, as well as other appropriate standards, guidelines, guidance, or criteria) from releases subject to RCRA Corrective Action, anywhere at, or from, the facility?

 X If yes - continue after identifying key contaminants, citing appropriate “levels,” and referencing supporting documentation.

_____ If no - skip to #8 and enter “YE” status code, after citing appropriate “levels,” and referencing supporting documentation to demonstrate that groundwater is not known or reasonably suspected to be “contaminated.”

¹“Contamination” and “contaminated” describes media containing contaminants (in any form, NAPL and/or dissolved, vapors, or solids, that are subject to RCRA) in concentrations in excess of appropriate “levels” (appropriate for the protection of the groundwater resource and its beneficial uses).

Migration of Contamination Groundwater Under Control
Environmental Indicator (EI) RCRAInfo code (CA750)
Page 4

_____ If unknown - skip to #8 and enter "TN" status code.

Rationale:

Between 2007 and 2013, a total of 26 groundwater monitoring wells were installed on-site to depths ranging from 7 to 54 feet below ground surface (bgs). Monitoring well locations are shown on Figure 4-1 and well construction data are summarized in Table 4-1. Nine groundwater monitoring events were conducted between 2007 and 2014. Groundwater samples collected during the initial sampling event in November 2007 were analyzed for target compound list VOCs, isopropyl alcohol, and total petroleum hydrocarbons (TPH). Isopropyl alcohol and TPH were not detected in groundwater during the initial sampling event. As a result, groundwater samples collected in subsequent sampling events were analyzed for target compound list VOCs only. Sample dates and laboratory analyses performed are summarized in Table 4-2. Analytical results from groundwater sampling performed at the Site from 2007 through 2014 are summarized in Table 5-5, where they are compared to applicable New York State Ambient Water Quality Standards (AWQS).

Thirteen VOCs were detected in groundwater samples collected during the time period from 2007 through 2014. Nine of those VOCs were detected intermittently at levels below AWQS at one to two locations. The remaining four VOCs were found at concentrations above AWQS, including 1,1-dichloroethane (1,1-DCA), 1,1-dichloroethene (1,1-DCE), 1,1,1-trichloroethane (1,1,1-TCA), and chloroform. A fifth VOC, 1,2-dichloroethane (1,2-DCA), was detected at an approximate concentration below the laboratory practical quantitation limit, but above AWQS in the November 2007 sample from one well (MW-2). 1,2-DCA was not detected in any of the groundwater samples collected during the period from 2010 through 2014. With the exception of chloroform, AWQS exceedances were limited to two overburden well clusters (MW-1/1D and MW-2/2D) located within and adjacent to the former UST area outside the northwest corner of the manufacturing facility. 1,1-DCA was detected at the highest concentrations (up to 24 µg/L compared to AWQS of 5 µg/L). Concentrations of 1,1,1-TCA and 1,1-DCE exceeded AWQS at one well location, MW-2D, at concentrations up to 7 and 9 µg/L, respectively; the AWQS for both compounds is 5 µg/L. Chloroform exceeded AWQS intermittently at one location (MW-16) at the opposite end of the Site adjacent to Route 303, and is attributed to leakage from a nearby municipal water main. Chloroform is a disinfection byproduct commonly found in public water supplies and was detected at a concentration of 36.8 µg/L in a tap water sample collected from the manufacturing facility.

References:

1. *"Draft Environmental Investigation Report, Avery Dennison Corp. Facility, Orangeburg NY,"* prepared by The Johnson Company, Inc., April 2015.
2. NYSDEC - Division of Water Technical and Operational Guidance Series (TOGS) 1.1.1, June 1998.

**Migration of Contamination Groundwater Under Control
Environmental Indicator (EI) RCRAInfo code (CA750)**

Page 5

3. Has the **migration** of contaminated groundwater **stabilized** (such that contaminated groundwater is expected to remain within “existing area of contaminated groundwater² as defined by the monitoring locations designated at the time of this determination)?

 X If yes - continue, after presenting or referencing the physical evidence (e.g., groundwater sampling/measurement/migration barrier data) and rationale why contaminated groundwater is expected to remain within the (horizontal or vertical) dimensions of the existing area of groundwater contamination²).

_____ If no (contaminated groundwater is observed or expected to migrate beyond the designated locations defining the existing area of groundwater contamination²) - skip to #8 and enter “NO” status code, after providing an explanation.

_____ If unknown - skip to #8 and enter “IN” status code.

Rationale:

The groundwater table is relatively shallow across the Site, ranging from approximately two feet bgs in the former UST area northwest (upgradient) of the Facility, to about six feet bgs in the south eastern (downgradient) portion of the Property. Groundwater contour maps representing four consecutive quarterly groundwater monitoring events performed at the Site in 2013 and 2014 are depicted on Figures 5-3 through 5-6. The horizontal hydraulic gradient shown on each of those figures indicates a southeasterly groundwater flow direction across the Site, toward Route 303. The pattern of groundwater flow remained consistent on-site throughout the investigation period from 2007 to 2014, indicating there is relatively little seasonal variation in groundwater flow patterns at the Site.

The groundwater monitoring data collected from 2007 through 2014 at the Site indicates that there is no significant subsurface source of 1,1-DCA, 1,1-DCE, and/or 1,1,1-TCA capable of impacting groundwater quality outside of the former UST area. Concentrations of these compounds have not shown an apparent increasing trend over seven years of monitoring at these locations. In addition, the vertical and horizontal extent of AWQS exceedances found in relation to 1,1-DCA, 1,1-DCE, and 1,1,1-TCA is limited to two overburden well clusters (MW-1/1D and MW-2/2D) located within and adjacent to the former UST area outside the northwest corner of the manufacturing facility. Although those compounds were detected in both shallow (water table) and deeper (approximately 20-30 feet depth) unconsolidated deposits groundwater, they were not detected in the underlying bedrock groundwater. Furthermore, concentrations of these compounds detected in the on-site groundwater are orders of magnitude below levels typically associated with DNAPL source areas. No VOCs were detected in soil samples collected from the MW-1 and MW-2 borings. Downgradient of the former UST area, 1,1-DCA was detected below AWQS in wells MW-19 and MW-20 at fluctuating concentrations, but have not shown an apparent increasing trend. A

²“existing area of contaminated groundwater” is an area (with horizontal and vertical dimensions) that has been verifiably demonstrated to contain all relevant groundwater contamination for this determination, and is defined by designated (monitoring) locations proximate to the outer perimeter of “contamination” that can and will be sampled/tested in the future to physically verify that all “contaminated” groundwater remains within this area, and that the further migration of “contaminated” groundwater is not occurring. Reasonable allowances in the proximity of the monitoring locations are permissible to incorporate formal remedy decisions (i.e., including public participation) allowing a limited area for natural attenuation.

**Migration of Contamination Groundwater Under Control
Environmental Indicator (EI) RCRAInfo code (CA750)**

Page 6

summary of VOC results from the four most recent quarterly monitoring events (October 2013 through August 2014) are shown in plan-view on Figure 5-9.

Available data suggest VOCs in groundwater have reached a mature and steady-state condition based on a comparison of estimated groundwater flow velocity to the relatively short distances between the former UST area and downgradient monitoring wells located on-site near the property boundary. Shallow groundwater flow velocity on-site is estimated to be approximately 200 feet per year. Based on this approximation, VOCs originating at a source near the former UST area at the northwestern corner of the manufacturing facility, if unattenuated, would have been detected at the downgradient monitoring well clusters (MWs-20/20D and MWs-11/11D, located a distance of approximately 280 to 380 feet) by the time the groundwater monitoring was concluded in 2014, approximately 7 years after the Phase I ESA found no evidence of chlorinated solvent use at the manufacturing facility, 16 years after the former USTs were removed, and 22 years after the former reactor room scupper trains were reportedly sealed. The absence of 1,1-DCA, 1,1-DCE, and 1,1,1-TCA in the downgradient wells at concentrations above AWQS indicates that VOC concentrations in the on-site groundwater have reached a steady-state condition and potentially contaminated groundwater is not migrating off-site.

References:

“Draft Environmental Investigation Report, Avery Dennison Corp. Facility, Orangeburg NY,” prepared by The Johnson Company, Inc., April 2015.

4. Does “contaminated” groundwater **discharge** into **surface water** bodies?

If yes - continue after identifying potentially affected surface water bodies.

If no - skip to #7 (and enter a “YE” status code in #8, if #7 = yes) after providing an explanation and/or referencing documentation supporting that groundwater “contaminated” does not enter surface water bodies.

If unknown - skip to #8 and enter “IN” status code.

Rationale:

A small, unnamed tributary stream is located near the northern and northeastern boundaries of the Site (refer to Figure 4-1). The tributary flows eastward along the Site boundary into a culvert beneath Route 303 and into Sparkill Creek approximately 500 feet east of the Site. Analysis of potentiometric data indicates a southeasterly groundwater flow direction across the Site toward Route 303. The data also shows that groundwater flow in the portion of the Site where 1,1-DCA, 1,1-DCE, and 1,1,1-TCA levels were identified in excess of AWQS (the former UST area outside the northwest corner of the manufacturing facility) passes south of the tributary toward Route 303 and Sparkill Creek. And since the chlorinated VOCs identified in the groundwater at the Site do not appear to be migrating off-site, it can be concluded that contaminated groundwater from the Site does not discharge into surface water bodies.

References:

“Draft Environmental Investigation Report, Avery Dennison Corp. Facility, Orangeburg NY,” prepared

Migration of Contamination Groundwater Under Control
Environmental Indicator (EI) RCRAInfo code (CA750)
Page 7

by The Johnson Company, Inc., April 2015.

7. Will groundwater **monitoring** / measurement data (and surface water/sediment/ecological data, as necessary) be collected in the future to verify that contaminated groundwater has remained within the horizontal (or vertical, as necessary) dimensions of the “existing area of contaminated groundwater?”

If yes - continue after providing or citing documentation for planned activities or future sampling/measurement events. Specifically identify the well/measurement locations which will be tested in the future to verify the expectation (identified in #3) that groundwater contamination will not be migrating horizontally (or vertically, as necessary) beyond the “existing area of groundwater contamination.”

If no - enter “NO” status code in #8.

If unknown - enter “IN” status code in #8.

Rationale:

Investigations conducted to date suggest VOCs in groundwater at the Site have reached a mature and steady-state condition, as discussed in Item 3. The apparent stability of 1,1-DCA; 1,1-DCE, and 1,1,1-TCA concentrations in groundwater, and the absence of those VOCs in perimeter monitoring wells at concentrations above AWQS also indicate steady-state conditions have developed and support the conclusion that the scope and duration of the groundwater investigation were sufficient to evaluate the nature and extent of VOCs in groundwater at the Site. Based on these findings, there is no need for additional long-term groundwater monitoring at the Site at this time. However, if the Agency becomes aware of significant changes at the Site in the future, the need for additional groundwater monitoring of the existing on-site monitoring well network will be re-evaluated.

8. Check the appropriate RCRAInfo status codes for the Migration of Contaminated Groundwater Under Control EI (event code CA750), and obtain Supervisor (or appropriate Manager) signature and date on the EI determination below (attach appropriate supporting documentation as well as a map of the facility).

YE - Yes, “Migration of Contaminated Groundwater Under Control” has been verified. Based on a review of the information contained in this EI determination, it has been determined that the “Migration of Contaminated Groundwater” is “Under Control” at the Avery Dennison-Orangeburg facility (Site), EPA ID # NYD056303266, located at 524 Route 303, Orangeburg, New York 10962. Specifically, this determination indicates that the migration of known or reasonably suspected to be “contaminated” groundwater is under control, and that monitoring will be conducted, as necessary, to confirm that contaminated groundwater remains within the “existing area of contaminated groundwater”. This determination will be re-evaluated when the Agency

**Migration of Contamination Groundwater Under Control
Environmental Indicator (EI) RCRAInfo code (CA750)**

Page 8

becomes aware of significant changes at the facility.

_____ NO – Unacceptable migration of contaminated groundwater is observed or expected.

_____ IN - More information is needed to make a determination.

Completed by:  Date: September 22, 2017
Daniel Lanners, Project Manager
Environmental Engineer 2

Supervisor:  Date: September 22, 2017
Amen Omorogbe, Remedial Section D
Section Chief

Director:  Date: September 22, 2017
George Heitzman, Director
Remedial Bureau C
Division of Environmental Remediation

Locations where References may be found:

New York State Department of Environmental Conservation
Division of Environmental Remediation
625 Broadway 11th Floor
Albany, New York 12233-7014

Contact, telephone number and e-mail:

Daniel Lanners
Phone: (518) 402-9652
E-Mail: daniel.lanners@dec.ny.gov

TABLES

Table 4-1
Monitoring Well Construction Data
Former Paxar Facility
Orangeburg, New York

Well ID	Date of Installation	Northing (NY State Plane)	Easting (NY State Plane)	Measuring Point Elevation (ft AMSL)	Ground Elevation (ft AMSL)	Top of Screen Depth (ft BGS)	Bottom of Screen Depth (ft BGS)	Top of Sandpack Depth (ft BGS)	Bottom of Sandpack Depth (ft BGS)	Final Stickup (ft AGS)
MW-1	10/31/07	809506.51	644101.70	103.81	101.00	4.0	14.0	3.0	14.0	2.81
MW-1D	2/16/12	809500.32	644101.62	100.72	101.00	20.6	25.3	19.5	26.0	-0.28
MW-2	10/31/07	809526.07	644112.16	103.33	100.80	4.0	14.0	3.0	14.0	2.53
MW-2D	2/16/12	809531.64	644111.82	100.33	100.70	20.1	24.8	18.9	25.5	-0.37
MW-2R	10/18/13	809515.73	644101.04	103.05	101.00	44.5 ⁽⁸⁾	53.5 ⁽⁸⁾	--	--	2.05
MW-3	10/31/07	809480.33	644109.70	104.02	101.20	5.0	15.0	4.0	15.0	2.82
MW-4	11/1/07	809446.44	644114.10	104.07	101.30	4.0	14.0	3.0	14.0	2.77
MW-5	11/1/07	809429.76	644061.37	103.17	103.34	4.0	14.0	3.0	14.0	-0.17
MW-6	10/30/07	809370.78	644099.86	99.77	100.16	5.0	15.0	4.0	15.0	-0.39
MW-7	10/30/07	809314.40	644100.96	99.70	99.98	10.0	20.0	9.0	20.0	-0.28
MW-9	11/1/07	809462.82	644048.49	104.42	104.67	8.0	18.0	6.0	18.0	-0.25
MW-10	10/29/07	809346.34	644255.42	96.60	96.97	5.0	15.0	-	-	-0.37
MW-11	11/2/07	809470.27	644475.02	102.81	99.50	8.5	18.5	7.5	18.5	3.31
MW-11D	10/21/13	809466.70	644483.37	98.69	99.23	20.6	25.2	19.0	27.0	-0.54
MW-12	11/2/07	809617.61	644385.74	103.00	99.50	8.5	18.5	7.5	18.5	3.50
MW-13	12/1/10	809663.70	644510.39	95.53	95.81	4.3	13.7	3.2	14.3	-0.28
MW-14	12/1/10	809598.31	644523.31	94.00	94.59	4.1	11.1	3.0	11.2	-0.59
MW-15	11/30/10	809565.26	644604.76	92.91	93.41	5.2	14.6	4.0	15.2	-0.50
MW-16	11/30/10	809510.70	644619.14	92.74	92.98	5.2	14.6	4.0	15.2	-0.24
MW-16D	10/22/13	809515.14	644621.64	92.60	92.98	15.0	17.0	14.0	18.0	-0.38
MW-17	2/16/12	809548.52	644039.83	106.56	106.80	4.1	13.8	3.0	14.0	-0.24
MW-18	2/16/12	809515.30	643991.46	108.72	109.00	4.1	13.8	3.0	14.0	-0.28
MW-19	10/17/13	809357.79	644329.39	95.77	96.14	4.1	13.8	3.0	14.5	-0.37
MW-19D	10/17/13	809359.10	644333.94	95.67	96.08	19.6	24.2	17.0	25.0	-0.41
MW-20	10/23/13	809404.99	644403.98	96.26	96.67	4.2	13.9	3.0	14.5	-0.41
MW-20D	10/23/13	809406.39	644409.27	96.02	96.50	17.8	22.3	16.0	23.0	-0.48

Notes:

1. ft BGS = feet below ground surface
2. ft AGS = feet above ground surface (negative values below ground surface)
3. Horizontal survey datum = NY State Plane, NAD 83, New York East Zone based on GPS.
4. Vertical survey datum = North American Vertical Datum 1988 (ft AMSL)
5. Site survey performed by Tectonic Engineering & Surveying Consultants, P.C. on 12/07/2010
6. ft AMSL = feet above mean sea level
7. MW-10 sandpack depth unknown, not included in ERM soil boring log
8. A well screen was not installed in MW-2R. Depths to top and bottom of open borehole provided.

Table 4-2
Groundwater Sampling Events
Former Paxar Facility
Orangeburg, New York

Well ID	Date of Well Installation	Groundwater Sample Event Dates and Laboratory Analyses Performed										
		2007			2010	2011	2012		2013	2014		
		11/13/07 - 11/14/07			12/13/10 - 12/16/10	10/10/11 - 10/13/11	3/5/12 - 3/8/12	10/15/12 - 10/18/12	10/28/13 - 10/30/13	2/10/14 - 2/20/14	5/5/14 - 5/8/14	8/4/14 - 8/7/14
		VOC ¹	IPA ²	TPH ³	VOC ¹	VOC ¹	VOC ¹	VOC ¹	VOC ¹	VOC ¹	VOC ¹	VOC ¹
MW-1	10/31/2007	•	•		•	•	•	•	•	•	•	•
MW-1D	2/16/2012						•	•	•	•	•	•
MW-2	10/31/2007	•	•		•	•	•	•	•	•	•	•
MW-2D	2/16/2012						•	•	•	•	•	•
MW-2R	10/18/2013								•	•	•	•
MW-3	10/31/2007	•	•	•	•	•	•	•	•	•	•	•
MW-4	11/1/2007	•	•	•	•	•	•	•	•	•	•	•
MW-5	11/1/2007	•	•	•	•	•	•	•	•	•	•	•
MW-6	10/30/2007	•	•	•	•	•	•	•	•	•	•	•
MW-7	10/30/2007	•	•	•	•	•	•	•	•	•	•	•
MW-9	11/1/2007	•	•		•	•	•	•	•	•	•	•
MW-10	10/29/2007	•	•	•	•	•	•	•	•	•	•	•
MW-11	11/2/2007	•	•	•	•	•	•	•	•	•	•	•
MW-11D	10/21/2013								•	•	•	•
MW-12	11/2/2007	•	•	•	•	•	•	•	•	•	•	•
MW-13	12/1/2010				•	•	•	•	•	•	•	•
MW-14	12/1/2010				•	•	•	•	•	•	•	•
MW-15	11/30/2010				•	•	•	•	•	•	•	•
MW-16	11/30/2010				•	•	•	•	•	•	•	•
MW-16D	10/22/2013								•	•	•	•
MW-17	2/16/2012						•	•	•	•	•	•
MW-18	2/16/2012						•	•	•	•	•	•
MW-19	10/17/2013								•	•	•	•
MW-19D	10/17/2013								•	•	•	•
MW-20	10/23/2013								•	•	•	•
MW-20D	10/23/2013								•	•	•	•

Notes:

1. VOC= target compound list volatile organic compounds. Analyzed via USEPA Method 8260B.
2. IPA = isopropyl alcohol. Analyzed via USEPA Method 8260B.
3. TPH = total petroleum hydrocarbons. Analyzed via USEPA Method 8015.
4. • indicates sampling/ analysis performed

Table 5-5
Groundwater Analytical Results Summary
Former Paxar Facility
Orangeburg, New York

Sample Location ID: Sample Date:			MW-1 11/13/2007	MW-1 12/14/2010	MW-1 10/12/2011	MW-1 3/8/2012	MW-1 10/18/2012	MW-1 10/30/2013	MW-1 2/19/2014	MW-1 2/19/2014 Duplicate	MW-1 5/8/2014	MW-1 8/6/2014	MW-1D 3/8/2012	MW-1D 10/17/2012
TCL Volatile Organic Compounds (8260B)	NYSDEC Standard	Type of Standard												
Acetone	50	POC	ND / 2.9	ND / 20	ND / 20	ND / 6	ND / 6	ND / 6	ND / 6	ND / 6	ND / 5	ND / 5	ND / 6	ND / 6
2-Butanone (MEK)	50	POC	ND / 2.7	ND / 10	ND / 10	ND / 3	ND / 3	ND / 3	ND / 3	ND / 3	ND / 5	ND / 5	ND / 3	ND / 3
1,1,1-Trichloroethane	5	POC	0.52 J	ND / 5	ND / 5	4 J	3J	2 J	2 J	2 J	3.6	3.2	2 J	3 J
1,1-Dichloroethane	5	POC	2.1	6	8	9	20	7	7	7	7.1	7.9	7	8
1,2-Dichloroethane	0.6	GA Standard	ND / 0.29	ND / 1	ND / 1	ND / 1	ND / 0.5	ND / 0.5	ND / 0.5	ND / 0.5	ND / 0.5	ND / 0.5	ND / 1	ND / 0.5
cis-1,2-Dichloroethene	5	POC	ND / 0.27	ND / 5	ND / 5	ND / 0.8	ND / 0.8	ND / 0.8	ND / 0.8	ND / 0.8	ND / 0.5	ND / 0.5	ND / 0.8	ND / 0.8
1,1-Dichloroethene	5	POC	ND / 0.28	ND / 5	5	5 J	2J	2 J	2 J	3 J	4.1	4.0	3 J	3 J
Methylene Chloride	5	POC	ND / 0.21	ND / 5	ND / 5	ND / 2	ND / 2	ND / 2	ND / 2	ND / 2	ND / 0.5	ND / 0.5	ND / 2	ND / 2
Tetrachloroethene	5	POC	ND / 0.28	ND / 5	ND / 5	ND / 0.8	ND / 0.8	ND / 0.8	ND / 0.8	ND / 0.8	ND / 0.5	ND / 0.5	ND / 0.8	ND / 0.8
Chloroform	7	GA Standard	ND / 0.25	ND / 5	ND / 5	ND / 0.8	ND / 0.8	ND / 0.8	ND / 0.8	ND / 0.8	ND / 0.5	ND / 0.5	2 J	ND / 0.8
Toluene	5	POC	ND / 0.21	ND / 5	ND / 5	ND / 0.7	ND / 0.7	ND / 0.7	ND / 0.7	ND / 0.7	ND / 0.5	ND / 0.5	ND / 0.7	ND / 0.7
Trichloroethene	5	POC	ND / 0.26	ND / 5	ND / 5	ND / 1	ND / 1	ND / 1	ND / 1	ND / 1	ND / 0.5	ND / 0.5	ND / 1	ND / 1
Bromodichloromethane	NAS (50)	Guidance Value	ND / 0.15	ND / 5	ND / 5	ND / 1	ND / 1	ND / 1	ND / 1	ND / 1	ND / 0.5	ND / 0.5	ND / 1	ND / 1
Dibromochloromethane	NAS (50)	Guidance Value	ND / 0.28	ND / 5	ND / 5	ND / 1	ND / 1	ND / 1	ND / 1	ND / 1	ND / 0.5	ND / 0.5	ND / 1	ND / 1
Isopropyl Alcohol (8015 DAI)														
Isopropyl Alcohol	NAS	--	ND / 25	NA	NA	NA	NA	NA	NA	NA	NA	NA	NA	NA
Total Petroleum Hydrocarbons (8015)														
GRO (C6-C10)	NAS	--	NA	NA	NA	NA	NA	NA	NA	NA	NA	NA	NA	NA
DRO (C10-C28)	NAS	--	NA	NA	NA	NA	NA	NA	NA	NA	NA	NA	NA	NA
ORO (>C28-C40)	NAS	--	NA	NA	NA	NA	NA	NA	NA	NA	NA	NA	NA	NA

Notes:

- All results are expressed in units of micrograms per liter (µg/L)
- Samples from 2007 were collected by ERM and analyzed by Accutest Laboratories
- Samples from 2010-2014 were collected by The Johnson Company, and were analyzed by Lancaster Laboratories
- ND / ## = Compound not detected above laboratory Method Detection Limit (MDL) or Practical Quantitation Limit (PQL), limit provided
- Values in **BOLD** typeface indicate detections
- J = Value is estimated by the laboratory, JB = value is estimated by the laboratory, compound was detected in equipment blank sample
- POC = NYSDEC Classification "Principal Organic Contaminant" for groundwater
- GA Standard = NYSDEC GA (fresh groundwaters) Guidance Value. (NYSDEC Div. of Water: Part 703: Surface Water and Groundwater Quality Limitations.)
- Shaded results indicate an exceedance to the GA or POC standard; results outlined in bold are approximate and may exceed standard
- "NAS" = No applicable standard; Guidance Value shown in parentheses if available
- "NA" = Parameter was not analyzed
- Potable water sample was collected from the Facility tap and represents the public water supply to the Property

Table 5-5
Groundwater Analytical Results Summary
Former Paxar Facility
Orangeburg, New York

Sample Location ID: Sample Date:			MW-1D 10/30/2013	MW-1D 2/19/2014	MW-1D 5/8/2014	MW-1D 8/6/2014	MW-2 11/13/2007	MW-2 12/14/2010	MW-2 12/14/2010	MW-2 10/12/2011	MW-2 10/12/2011	MW-2 3/8/2012	MW-2 3/8/2012	MW-2 10/17/2012
TCL Volatile Organic Compounds (8260B)	NYSDEC Standard	Type of Standard							Duplicate		Duplicate		Duplicate	
Acetone	50	POC	ND / 6	ND / 6	ND / 5	ND / 5	ND / 2.9	ND / 20	ND / 20	ND / 20	ND / 20	ND / 6	ND / 6	ND / 6
2-Butanone (MEK)	50	POC	ND / 3	ND / 3	ND / 5	ND / 5	ND / 2.7	ND / 10	ND / 10	ND / 10	ND / 10	ND / 3	ND / 3	ND / 3
1,1,1-Trichloroethane	5	POC	3 J	3 J	3.7	3.4	0.56 J	ND / 5	ND / 5	ND / 5	ND / 5	2 J	2 J	0.9 J
1,1-Dichloroethane	5	POC	7	7	8.2	8.2	5.2	ND / 5	ND / 5	17	18	7	8	10
1,2-Dichloroethane	0.6	GA Standard	ND / 0.5	ND / 0.5	ND / 0.5	ND / 0.5	0.92 J	ND / 1	ND / 1	ND / 1	ND / 1	ND / 1	ND / 1	ND / 0.5
cis-1,2-Dichloroethene	5	POC	ND / 0.8	ND / 0.8	ND / 0.5	ND / 0.5	ND / 0.27	ND / 5	ND / 5	ND / 5	ND / 5	ND / 0.8	ND / 0.8	ND / 0.8
1,1-Dichloroethene	5	POC	4 J	4 J	3.7	3.7	ND / 0.28	ND / 5	ND / 5	ND / 5	ND / 5	2 J	2 J	ND / 0.8
Methylene Chloride	5	POC	ND / 2	ND / 2	ND / 0.5	ND / 0.5	ND / 0.21	ND / 5	ND / 5	ND / 5	ND / 5	ND / 2	ND / 2	ND / 2
Tetrachloroethene	5	POC	ND / 0.8	ND / 0.8	ND / 0.5	ND / 0.5	ND / 0.28	ND / 5	ND / 5	ND / 5	ND / 5	ND / 0.8	ND / 0.8	ND / 0.8
Chloroform	7	GA Standard	ND / 0.8	ND / 0.8	ND / 0.5	ND / 0.5	ND / 0.25	ND / 5	ND / 5	ND / 5	ND / 5	ND / 0.8	ND / 0.8	ND / 0.8
Toluene	5	POC	ND / 0.7	ND / 0.7	ND / 0.5	ND / 0.5	ND / 0.21	ND / 5	ND / 5	ND / 5	ND / 5	ND / 0.7	ND / 0.7	ND / 0.7
Trichloroethene	5	POC	ND / 1	ND / 1	ND / 0.5	ND / 0.5	ND / 0.26	ND / 5	ND / 5	ND / 5	ND / 5	ND / 1	ND / 1	ND / 1
Bromodichloromethane	NAS (50)	Guidance Value	ND / 1	ND / 1	ND / 0.5	ND / 0.5	ND / 0.15	ND / 5	ND / 5	ND / 5	ND / 5	ND / 1	ND / 1	ND / 1
Dibromochloromethane	NAS (50)	Guidance Value	ND / 1	ND / 1	ND / 0.5	ND / 0.5	ND / 0.28	ND / 5	ND / 5	ND / 5	ND / 5	ND / 1	ND / 1	ND / 1
Isopropyl Alcohol (8015 DAI)														
Isopropyl Alcohol	NAS	--	NA	NA	NA	NA	ND / 25	NA	NA	NA	NA	NA	NA	NA
Total Petroleum Hydrocarbons (8015)														
GRO (C6-C10)	NAS	--	NA	NA	NA	NA	NA	NA	NA	NA	NA	NA	NA	NA
DRO (C10-C28)	NAS	--	NA	NA	NA	NA	NA	NA	NA	NA	NA	NA	NA	NA
ORO (>C28-C40)	NAS	--	NA	NA	NA	NA	NA	NA	NA	NA	NA	NA	NA	NA

Notes:

- All results are expressed in units of micrograms per liter (µg/L)
- Samples from 2007 were collected by ERM and analyzed by Accutest Laboratories
- Samples from 2010-2014 were collected by The Johnson Company, and were analyzed by Lancaster Laboratories
- ND / ## = Compound not detected above laboratory Method Detection Limit (MDL) or Practical Quantitation Limit (PQL), limit provided
- Values in **BOLD** typeface indicate detections
- J = Value is estimated by the laboratory, JB = value is estimated by the laboratory, compound was detected in equipment blank sample
- POC = NYSDEC Classification "Principal Organic Contaminant" for groundwater
- GA Standard = NYSDEC GA (fresh groundwaters) Guidance Value. (NYSDEC Div. of Water: Part 703: Surface Water and Groundwater Quality Limitations.)
- Shaded results indicate an exceedance to the GA or POC standard; results outlined in bold are approximate and may exceed standard
- "NAS" = No applicable standard; Guidance Value shown in parentheses if available
- "NA" = Parameter was not analyzed
- Potable water sample was collected from the Facility tap and represents the public water supply to the Property

Table 5-5
Groundwater Analytical Results Summary
Former Paxar Facility
Orangeburg, New York

Sample Location ID: Sample Date:			MW-2 10/17/2012	MW-2 10/30/2013	MW-2 10/30/2013	MW-2 2/18/2014	MW-2 5/8/2014	MW-2 8/6/2014	MW-2D 3/8/2012	MW-2D 10/17/2012	MW-2D 10/30/2013	MW-2D 2/18/2014	MW-2D 5/8/2014	MW-2D 5/8/2014
TCL Volatile Organic Compounds (8260B)	NYSDEC Standard	Type of Standard	Duplicate		Duplicate									Duplicate
Acetone	50	POC	ND / 6	ND / 6	ND / 6	ND / 6	ND / 5	ND / 5	ND / 6	ND / 6	ND / 6	ND / 6	ND / 5	ND / 5
2-Butanone (MEK)	50	POC	ND / 3	ND / 3	ND / 3	ND / 3	ND / 5	ND / 5	ND / 3	ND / 3	ND / 3	ND / 3	ND / 5	ND / 5
1,1,1-Trichloroethane	5	POC	0.9 J	1 J	1 J	1 J	1.6	ND / 0.5	3 J	7	4 J	6	4.9	5.1
1,1-Dichloroethane	5	POC	12	9	9	10	6.6	ND / 0.5	19	24	21	19	19	20
1,2-Dichloroethane	0.6	GA Standard	ND / 0.5	ND / 0.5	ND / 0.5	ND / 0.5	ND / 0.5	ND / 0.5	ND / 1	ND / 0.5	ND / 0.5	ND / 0.5	ND / 0.5	ND / 0.5
cis-1,2-Dichloroethene	5	POC	ND / 0.8	ND / 0.8	ND / 0.8	ND / 0.8	ND / 0.5	ND / 0.5	ND / 0.8	ND / 0.8	ND / 0.8	ND / 0.8	ND / 0.5	ND / 0.5
1,1-Dichloroethene	5	POC	ND / 0.8	2 J	1 J	0.9 J	1.5	ND / 0.5	5 J	9	6	9	5.3	5.5
Methylene Chloride	5	POC	ND / 2	ND / 2	ND / 2	ND / 2	ND / 0.5	ND / 0.5	ND / 2	ND / 2	ND / 2	ND / 2	ND / 0.5	ND / 0.5
Tetrachloroethene	5	POC	ND / 0.8	ND / 0.8	ND / 0.8	ND / 0.8	ND / 0.5	ND / 0.5	ND / 0.8	ND / 0.8	ND / 0.8	ND / 0.8	ND / 0.5	ND / 0.5
Chloroform	7	GA Standard	ND / 0.8	ND / 0.8	ND / 0.8	ND / 0.8	ND / 0.5	ND / 0.5	ND / 0.8	ND / 0.8	ND / 0.8	ND / 0.8	ND / 0.5	ND / 0.5
Toluene	5	POC	ND / 0.7	ND / 0.7	ND / 0.7	ND / 0.7	ND / 0.5	ND / 0.5	ND / 0.7	ND / 0.7	ND / 0.7	ND / 0.7	ND / 0.5	ND / 0.5
Trichloroethene	5	POC	ND / 1	ND / 1	ND / 1	ND / 1	ND / 0.5	ND / 0.5	ND / 1	ND / 1	ND / 1	ND / 1	ND / 0.5	ND / 0.5
Bromodichloromethane	NAS (50)	Guidance Value	ND / 1	ND / 1	ND / 1	ND / 1	ND / 0.5	ND / 0.5	ND / 1	ND / 1	ND / 1	ND / 1	ND / 0.5	ND / 0.5
Dibromochloromethane	NAS (50)	Guidance Value	ND / 1	ND / 1	ND / 1	ND / 1	ND / 0.5	ND / 0.5	ND / 1	ND / 1	ND / 1	ND / 1	ND / 0.5	ND / 0.5
Isopropyl Alcohol (8015 DAI)														
Isopropyl Alcohol	NAS	--	NA	NA	NA	NA	NA	NA	NA	NA	NA	NA	NA	NA
Total Petroleum Hydrocarbons (8015)														
GRO (C6-C10)	NAS	--	NA	NA	NA	NA	NA	NA	NA	NA	NA	NA	NA	NA
DRO (C10-C28)	NAS	--	NA	NA	NA	NA	NA	NA	NA	NA	NA	NA	NA	NA
ORO (>C28-C40)	NAS	--	NA	NA	NA	NA	NA	NA	NA	NA	NA	NA	NA	NA

Notes:

- All results are expressed in units of micrograms per liter (µg/L)
- Samples from 2007 were collected by ERM and analyzed by Accutest Laboratories
- Samples from 2010-2014 were collected by The Johnson Company, and were analyzed by Lancaster Laboratories
- ND / ## = Compound not detected above laboratory Method Detection Limit (MDL) or Practical Quantitation Limit (PQL), limit provided
- Values in **BOLD** typeface indicate detections
- J = Value is estimated by the laboratory, JB = value is estimated by the laboratory, compound was detected in equipment blank sample
- POC = NYSDEC Classification "Principal Organic Contaminant" for groundwater
- GA Standard = NYSDEC GA (fresh groundwaters) Guidance Value. (NYSDEC Div. of Water: Part 703: Surface Water and Groundwater Quality Limitations.)
- Shaded results indicate an exceedance to the GA or POC standard; results outlined in bold are approximate and may exceed standard
- "NAS" = No applicable standard; Guidance Value shown in parentheses if available
- "NA" = Parameter was not analyzed
- Potable water sample was collected from the Facility tap and represents the public water supply to the Property

Table 5-5
Groundwater Analytical Results Summary
Former Paxar Facility
Orangeburg, New York

Sample Location ID: Sample Date:			MW-2D 8/6/2014	MW-2D 8/6/2014	MW-2R 10/30/2013	MW-2R 2/20/2014	MW-2R 5/8/2014	MW-2R 8/6/2014	MW-3 11/13/2007	MW-3 11/13/2007	MW-3 12/14/2010	MW-3 10/12/2011	MW-3 3/7/2012	MW-3 10/17/2012
TCL Volatile Organic Compounds (8260B)	NYSDEC Standard	Type of Standard		Duplicate						Duplicate				
Acetone	50	POC	ND / 5	ND / 5	ND / 6	ND / 6	ND / 5	ND / 5	ND / 2.9	ND / 2.9	ND / 20	ND / 20	ND / 6	ND / 6
2-Butanone (MEK)	50	POC	ND / 5	ND / 5	ND / 3	ND / 3	ND / 5	ND / 5	ND / 2.7	ND / 2.7	ND / 10	ND / 10	ND / 3	ND / 3
1,1,1-Trichloroethane	5	POC	4.4	4.3	ND / 0.8	ND / 0.8	ND / 0.5	ND / 0.5	ND / 0.30	ND / 0.30	ND / 5	ND / 5	ND / 0.8	ND / 0.8
1,1-Dichloroethane	5	POC	19	19	ND / 1	ND / 1	ND / 0.5	ND / 0.5	ND / 0.20	ND / 0.20	ND / 5	ND / 5	3 J	2 J
1,2-Dichloroethane	0.6	GA Standard	ND / 0.5	ND / 0.5	ND / 0.5	ND / 0.5	ND / 0.5	ND / 0.5	ND / 0.29	ND / 0.29	ND / 1	ND / 1	ND / 1	ND / 1
cis-1,2-Dichloroethene	5	POC	ND / 0.5	ND / 0.5	ND / 0.8	ND / 0.8	ND / 0.5	ND / 0.5	ND / 0.27	ND / 0.27	ND / 5	ND / 5	ND / 0.8	ND / 0.8
1,1-Dichloroethene	5	POC	5.6	5.6	ND / 0.8	ND / 0.8	ND / 0.5	ND / 0.5	ND / 0.28	ND / 0.28	ND / 5	ND / 5	1 J	ND / 0.8
Methylene Chloride	5	POC	ND / 0.5	ND / 0.5	ND / 2	ND / 2	ND / 0.5	ND / 0.5	ND / 0.21	ND / 0.21	ND / 5	ND / 5	ND / 2	ND / 2
Tetrachloroethene	5	POC	ND / 0.5	ND / 0.5	ND / 0.8	ND / 0.8	ND / 0.5	ND / 0.5	ND / 0.28	ND / 0.28	ND / 5	ND / 5	ND / 0.8	ND / 0.8
Chloroform	7	GA Standard	ND / 0.5	ND / 0.5	ND / 0.8	ND / 0.8	ND / 0.5	ND / 0.5	ND / 0.25	ND / 0.25	ND / 5	ND / 5	ND / 0.8	ND / 0.8
Toluene	5	POC	ND / 0.5	ND / 0.5	ND / 0.7	ND / 0.7	ND / 0.5	ND / 0.5	ND / 0.21	ND / 0.21	ND / 5	ND / 5	ND / 0.7	ND / 0.7
Trichloroethene	5	POC	ND / 0.5	ND / 0.5	ND / 1	ND / 1	ND / 0.5	ND / 0.5	ND / 0.26	ND / 0.26	ND / 5	ND / 5	ND / 1	ND / 1
Bromodichloromethane	NAS (50)	Guidance Value	ND / 0.5	ND / 0.5	ND / 1	ND / 1	ND / 0.5	ND / 0.5	ND / 0.15	ND / 0.15	ND / 5	ND / 5	ND / 1	ND / 1
Dibromochloromethane	NAS (50)	Guidance Value	ND / 0.5	ND / 0.5	ND / 1	ND / 1	ND / 0.5	ND / 0.5	ND / 0.28	ND / 0.28	ND / 5	ND / 5	ND / 1	ND / 1
Isopropyl Alcohol (8015 DAI)														
Isopropyl Alcohol	NAS	--	NA	NA	NA	NA	NA	NA	NA	ND / 25	ND / 25	NA	NA	NA
Total Petroleum Hydrocarbons (8015)														
GRO (C6-C10)	NAS	--	NA	NA	NA	NA	NA	NA	NA	ND / 33	ND / 33	NA	NA	NA
DRO (C10-C28)	NAS	--	NA	NA	NA	NA	NA	NA	NA	ND / 19	ND / 19	NA	NA	NA
ORO (>C28-C40)	NAS	--	NA	NA	NA	NA	NA	NA	NA	ND / 56	ND / 56	NA	NA	NA

Notes:

- All results are expressed in units of micrograms per liter (µg/L)
- Samples from 2007 were collected by ERM and analyzed by Accutest Laboratories
- Samples from 2010-2014 were collected by The Johnson Company, and were analyzed by Lancaster Laboratories
- ND / ## = Compound not detected above laboratory Method Detection Limit (MDL) or Practical Quantitation Limit (PQL), limit provided
- Values in **BOLD** typeface indicate detections
- J = Value is estimated by the laboratory, JB = value is estimated by the laboratory, compound was detected in equipment blank sample
- POC = NYSDEC Classification "Principal Organic Contaminant" for groundwater
- GA Standard = NYSDEC GA (fresh groundwaters) Guidance Value. (NYSDEC Div. of Water: Part 703: Surface Water and Groundwater Quality Limitations.)
- Shaded results indicate an exceedance to the GA or POC standard; results outlined in bold are approximate and may exceed standard
- "NAS" = No applicable standard; Guidance Value shown in parentheses if available
- "NA" = Parameter was not analyzed
- Potable water sample was collected from the Facility tap and represents the public water supply to the Property

Table 5-5
Groundwater Analytical Results Summary
Former Paxar Facility
Orangeburg, New York

Sample Location ID: Sample Date:			MW-3 10/30/2013	MW-3 2/19/2014	MW-3 5/8/2014	MW-3 8/6/2014	MW-4 11/13/2007	MW-4 12/15/2010	MW-4 10/12/2011	MW-4 3/6/2012	MW-4 10/16/2012	MW-4 10/29/2013	MW-4 2/20/2014	MW-4 5/8/2014
TCL Volatile Organic Compounds (8260B)	NYSDEC Standard	Type of Standard												
Acetone	50	POC	ND / 6	ND / 6	ND / 5	ND / 5	ND / 2.9	ND / 20	ND / 20	ND / 6	ND / 6	ND / 6	ND / 6	ND / 5
2-Butanone (MEK)	50	POC	ND / 3	ND / 3	ND / 5	ND / 5	ND / 2.7	ND / 10	ND / 10	ND / 3	ND / 3	ND / 3	ND / 3	ND / 5
1,1,1-Trichloroethane	5	POC	ND / 0.8	ND / 0.8	ND / 0.5	ND / 0.5	ND / 0.30	ND / 5	ND / 5	ND / 0.8	ND / 0.8	ND / 0.8	ND / 0.8	ND / 0.5
1,1-Dichloroethane	5	POC	ND / 1	ND / 1	1.3	1.2	ND / 0.20	ND / 5	ND / 5	ND / 1	ND / 1	ND / 1	ND / 1	ND / 0.5
1,2-Dichloroethane	0.6	GA Standard	ND / 0.5	ND / 0.5	ND / 0.5	ND / 0.5	ND / 0.29	ND / 1	ND / 1	ND / 1	ND / 0.5	ND / 0.5	ND / 0.5	ND / 0.5
cis-1,2-Dichloroethene	5	POC	ND / 0.8	ND / 0.8	ND / 0.5	ND / 0.5	ND / 0.27	ND / 5	ND / 5	ND / 0.8	ND / 0.8	ND / 0.8	ND / 0.8	ND / 0.5
1,1-Dichloroethene	5	POC	ND / 0.8	ND / 0.8	0.5	0.5	ND / 0.28	ND / 5	ND / 5	ND / 0.8	ND / 0.8	ND / 0.8	ND / 0.8	ND / 0.5
Methylene Chloride	5	POC	ND / 2	ND / 2	ND / 0.5	ND / 0.5	ND / 0.21	ND / 5	ND / 5	ND / 2	ND / 2	ND / 2	ND / 2	ND / 0.5
Tetrachloroethene	5	POC	ND / 0.8	ND / 0.8	ND / 0.5	ND / 0.5	ND / 0.28	ND / 5	ND / 5	ND / 0.8	ND / 0.8	ND / 0.8	ND / 0.8	ND / 0.5
Chloroform	7	GA Standard	ND / 0.8	ND / 0.8	ND / 0.5	ND / 0.5	ND / 0.25	ND / 5	ND / 5	ND / 0.8	ND / 0.8	ND / 0.8	ND / 0.8	ND / 0.5
Toluene	5	POC	ND / 0.7	ND / 0.7	ND / 0.5	ND / 0.5	ND / 0.21	ND / 5	ND / 5	ND / 0.7	ND / 0.7	ND / 0.7	ND / 0.7	ND / 0.5
Trichloroethene	5	POC	ND / 1	ND / 1	ND / 0.5	ND / 0.5	ND / 0.26	ND / 5	ND / 5	ND / 1	ND / 1	ND / 1	ND / 1	ND / 0.5
Bromodichloromethane	NAS (50)	Guidance Value	ND / 1	ND / 1	ND / 0.5	ND / 0.5	ND / 0.15	ND / 5	ND / 5	ND / 1	ND / 1	ND / 1	ND / 1	ND / 0.5
Dibromochloromethane	NAS (50)	Guidance Value	ND / 1	ND / 1	ND / 0.5	ND / 0.5	ND / 0.28	ND / 5	ND / 5	ND / 1	ND / 1	ND / 1	ND / 1	ND / 0.5
Isopropyl Alcohol (8015 DAI)														
Isopropyl Alcohol	NAS	--	NA	NA	NA	NA	ND / 25	NA	NA	NA	NA	NA	NA	NA
Total Petroleum Hydrocarbons (8015)														
GRO (C6-C10)	NAS	--	NA	NA	NA	NA	ND / 33	NA	NA	NA	NA	NA	NA	NA
DRO (C10-C28)	NAS	--	NA	NA	NA	NA	ND / 18	NA	NA	NA	NA	NA	NA	NA
ORO (>C28-C40)	NAS	--	NA	NA	NA	NA	ND / 53	NA	NA	NA	NA	NA	NA	NA

Notes:

- All results are expressed in units of micrograms per liter (µg/L)
- Samples from 2007 were collected by ERM and analyzed by Accutest Laboratories
- Samples from 2010-2014 were collected by The Johnson Company, and were analyzed by Lancaster Laboratories
- ND / ## = Compound not detected above laboratory Method Detection Limit (MDL) or Practical Quantitation Limit (PQL), limit provided
- Values in **BOLD** typeface indicate detections
- J = Value is estimated by the laboratory, JB = value is estimated by the laboratory, compound was detected in equipment blank sample
- POC = NYSDEC Classification "Principal Organic Contaminant" for groundwater
- GA Standard = NYSDEC GA (fresh groundwaters) Guidance Value. (NYSDEC Div. of Water: Part 703: Surface Water and Groundwater Quality Limitations.)
- Shaded results indicate an exceedance to the GA or POC standard; results outlined in bold are approximate and may exceed standard
- "NAS" = No applicable standard; Guidance Value shown in parentheses if available
- "NA" = Parameter was not analyzed
- Potable water sample was collected from the Facility tap and represents the public water supply to the Property

Table 5-5
Groundwater Analytical Results Summary
Former Paxar Facility
Orangeburg, New York

Sample Location ID: Sample Date:			MW-4 8/6/2014	MW-5 11/14/2007	MW-5 12/15/2010	MW-5 10/13/2011	MW-5 3/7/2012	MW-5 10/17/2012	MW-5 10/30/2013	MW-5 2/18/2014	MW-5 5/7/2014	MW-5 8/6/2014	MW-6 11/14/2007	MW-6 12/16/2010
TCL Volatile Organic Compounds (8260B)	NYSDEC Standard	Type of Standard												
Acetone	50	POC	ND / 5	ND / 2.9	ND / 20	ND / 20	ND / 6	ND / 6	ND / 6	ND / 6	ND / 5	ND / 5	ND / 2.9	ND / 20
2-Butanone (MEK)	50	POC	ND / 5	ND / 2.7	ND / 10	ND / 10	ND / 3	ND / 3	ND / 3	ND / 3	ND / 5	ND / 5	ND / 2.7	ND / 10
1,1,1-Trichloroethane	5	POC	ND / 0.5	ND / 0.30	ND / 5	ND / 5	ND / 0.8	ND / 0.8	ND / 0.8	ND / 0.8	ND / 0.5	ND / 0.5	ND / 0.30	ND / 5
1,1-Dichloroethane	5	POC	ND / 0.5	ND / 0.20	ND / 5	ND / 5	ND / 1	ND / 1	ND / 1	ND / 1	ND / 0.5	ND / 0.5	ND / 0.20	ND / 5
1,2-Dichloroethane	0.6	GA Standard	ND / 0.5	ND / 0.29	ND / 1	ND / 1	ND / 1	ND / 0.5	ND / 0.5	ND / 0.5	ND / 0.5	ND / 0.5	ND / 0.29	ND / 1
cis-1,2-Dichloroethene	5	POC	ND / 0.5	ND / 0.27	ND / 5	ND / 5	ND / 0.8	ND / 0.8	ND / 0.8	ND / 0.8	ND / 0.5	ND / 0.5	ND / 0.27	ND / 5
1,1-Dichloroethene	5	POC	ND / 0.5	ND / 0.28	ND / 5	ND / 5	ND / 0.8	ND / 0.8	ND / 0.8	ND / 0.8	ND / 0.5	ND / 0.5	ND / 0.28	ND / 5
Methylene Chloride	5	POC	ND / 0.5	ND / 0.21	ND / 5	ND / 5	ND / 2	ND / 2	ND / 2	ND / 2	ND / 0.5	ND / 0.5	ND / 0.21	ND / 5
Tetrachloroethene	5	POC	ND / 0.5	ND / 0.28	ND / 5	ND / 5	ND / 0.8	ND / 0.8	ND / 0.8	ND / 0.8	ND / 0.5	ND / 0.5	ND / 0.28	ND / 5
Chloroform	7	GA Standard	ND / 0.5	ND / 0.25	ND / 5	ND / 5	ND / 0.8	ND / 0.8	ND / 0.8	ND / 0.8	ND / 0.5	ND / 0.5	ND / 0.25	ND / 5
Toluene	5	POC	ND / 0.5	0.32 J	ND / 5	ND / 5	ND / 0.7	ND / 0.7	ND / 0.7	ND / 0.7	ND / 0.5	ND / 0.5	0.30 J	ND / 5
Trichloroethene	5	POC	ND / 0.5	ND / 0.26	ND / 5	ND / 5	ND / 1	ND / 1	ND / 1	ND / 1	ND / 0.5	ND / 0.5	ND / 0.26	ND / 5
Bromodichloromethane	NAS (50)	Guidance Value	ND / 0.5	ND / 0.15	ND / 5	ND / 5	ND / 1	ND / 1	ND / 1	ND / 1	ND / 0.5	ND / 0.5	ND / 0.15	ND / 5
Dibromochloromethane	NAS (50)	Guidance Value	ND / 0.5	ND / 0.28	ND / 5	ND / 5	ND / 1	ND / 1	ND / 1	ND / 1	ND / 0.5	ND / 0.5	ND / 0.28	ND / 5
Isopropyl Alcohol (8015 DAI)														
Isopropyl Alcohol	NAS	--	NA	ND / 25	NA	NA	NA	NA	NA	NA	NA	NA	ND / 25	NA
Total Petroleum Hydrocarbons (8015)														
GRO (C6-C10)	NAS	--	NA	ND / 33	NA	NA	NA	NA	NA	NA	NA	NA	ND / 33	NA
DRO (C10-C28)	NAS	--	NA	ND / 20	NA	NA	NA	NA	NA	NA	NA	NA	ND / 17	NA
ORO (>C28-C40)	NAS	--	NA	ND / 57	NA	NA	NA	NA	NA	NA	NA	NA	ND / 50	NA

Notes:

- All results are expressed in units of micrograms per liter (µg/L)
- Samples from 2007 were collected by ERM and analyzed by Accutest Laboratories
- Samples from 2010-2014 were collected by The Johnson Company, and were analyzed by Lancaster Laboratories
- ND / ## = Compound not detected above laboratory Method Detection Limit (MDL) or Practical Quantitation Limit (PQL), limit provided
- Values in **BOLD** typeface indicate detections
- J = Value is estimated by the laboratory, JB = value is estimated by the laboratory, compound was detected in equipment blank sample
- POC = NYSDEC Classification "Principal Organic Contaminant" for groundwater
- GA Standard = NYSDEC GA (fresh groundwaters) Guidance Value. (NYSDEC Div. of Water: Part 703: Surface Water and Groundwater Quality Limitations.)
- Shaded results indicate an exceedance to the GA or POC standard; results outlined in bold are approximate and may exceed standard
- "NAS" = No applicable standard; Guidance Value shown in parentheses if available
- "NA" = Parameter was not analyzed
- Potable water sample was collected from the Facility tap and represents the public water supply to the Property

Table 5-5
Groundwater Analytical Results Summary
Former Paxar Facility
Orangeburg, New York

Sample Location ID: Sample Date:			MW-6 10/12/2011	MW-6 3/7/2012	MW-6 10/18/2012	MW-6 10/30/2013	MW-6 2/19/2014	MW-6 5/5/2014	MW-6 8/4/2014	MW-7 11/13/2007	MW-7 12/16/2010	MW-7 10/12/2011	MW-7 3/5/2012	MW-7 10/15/2012
TCL Volatile Organic Compounds (8260B)	NYSDEC Standard	Type of Standard												
Acetone	50	POC	ND / 20	ND / 6	ND / 6	ND / 6	ND / 6	ND / 5	ND / 5	ND / 2.9	ND / 20	ND / 20	ND / 6	ND / 6
2-Butanone (MEK)	50	POC	ND / 10	ND / 3	ND / 3	ND / 3	ND / 3	ND / 5	ND / 5	ND / 2.7	ND / 10	ND / 10	ND / 3	ND / 3
1,1,1-Trichloroethane	5	POC	ND / 5	ND / 0.8	ND / 0.8	ND / 0.8	ND / 0.8	ND / 0.5	ND / 0.5	ND / 0.30	ND / 5	ND / 5	ND / 0.8	ND / 0.8
1,1-Dichloroethane	5	POC	ND / 5	ND / 1	ND / 1	ND / 1	ND / 1	ND / 0.5	ND / 0.5	ND / 0.20	ND / 5	ND / 5	ND / 1	ND / 1
1,2-Dichloroethane	0.6	GA Standard	ND / 1	ND / 1	ND / 0.5	ND / 0.5	ND / 0.5	ND / 0.5	ND / 0.5	ND / 0.29	ND / 1	ND / 1	ND / 1	ND / 0.5
cis-1,2-Dichloroethene	5	POC	ND / 5	ND / 0.8	ND / 0.8	ND / 0.8	ND / 0.8	ND / 0.5	ND / 0.5	ND / 0.27	ND / 5	ND / 5	ND / 0.8	ND / 0.8
1,1-Dichloroethene	5	POC	ND / 5	ND / 0.8	ND / 0.8	ND / 0.8	ND / 0.8	ND / 0.5	ND / 0.5	ND / 0.28	ND / 5	ND / 5	ND / 0.8	ND / 0.8
Methylene Chloride	5	POC	ND / 5	ND / 2	ND / 2	ND / 2	ND / 2	ND / 0.5	ND / 0.5	ND / 0.21	ND / 5	ND / 5	ND / 2	ND / 2
Tetrachloroethene	5	POC	ND / 5	ND / 0.8	ND / 0.8	ND / 0.8	ND / 0.8	ND / 0.5	ND / 0.5	ND / 0.28	ND / 5	ND / 5	ND / 0.8	ND / 0.8
Chloroform	7	GA Standard	ND / 5	ND / 0.8	ND / 0.8	ND / 0.8	ND / 0.8	ND / 0.5	ND / 0.5	ND / 0.25	ND / 5	ND / 5	ND / 0.8	ND / 0.8
Toluene	5	POC	ND / 5	ND / 0.7	ND / 0.7	ND / 0.7	ND / 0.7	ND / 0.5	ND / 0.5	ND / 0.21	ND / 5	ND / 5	ND / 0.7	ND / 0.7
Trichloroethene	5	POC	ND / 5	ND / 1	ND / 1	ND / 1	ND / 1	ND / 0.5	ND / 0.5	ND / 0.26	ND / 5	ND / 5	ND / 1	ND / 1
Bromodichloromethane	NAS (50)	Guidance Value	ND / 5	ND / 1	ND / 1	ND / 1	ND / 1	ND / 0.5	ND / 0.5	ND / 0.15	ND / 5	ND / 5	ND / 1	ND / 1
Dibromochloromethane	NAS (50)	Guidance Value	ND / 5	ND / 1	ND / 1	ND / 1	ND / 1	ND / 0.5	ND / 0.5	ND / 0.28	ND / 5	ND / 5	ND / 1	ND / 1
Isopropyl Alcohol (8015 DAI)														
Isopropyl Alcohol	NAS	--	NA	NA	NA	NA	NA	NA	NA	ND / 25	NA	NA	NA	NA
Total Petroleum Hydrocarbons (8015)														
GRO (C6-C10)	NAS	--	NA	NA	NA	NA	NA	NA	NA	ND / 33	NA	NA	NA	NA
DRO (C10-C28)	NAS	--	NA	NA	NA	NA	NA	NA	NA	ND / 18	NA	NA	NA	NA
ORO (>C28-C40)	NAS	--	NA	NA	NA	NA	NA	NA	NA	ND / 54	NA	NA	NA	NA

Notes:

- All results are expressed in units of micrograms per liter (µg/L)
- Samples from 2007 were collected by ERM and analyzed by Accutest Laboratories
- Samples from 2010-2014 were collected by The Johnson Company, and were analyzed by Lancaster Laboratories
- ND / ## = Compound not detected above laboratory Method Detection Limit (MDL) or Practical Quantitation Limit (PQL), limit provided
- Values in **BOLD** typeface indicate detections
- J = Value is estimated by the laboratory, JB = value is estimated by the laboratory, compound was detected in equipment blank sample
- POC = NYSDEC Classification "Principal Organic Contaminant" for groundwater
- GA Standard = NYSDEC GA (fresh groundwaters) Guidance Value. (NYSDEC Div. of Water: Part 703: Surface Water and Groundwater Quality Limitations.)
- Shaded results indicate an exceedance to the GA or POC standard; results outlined in bold are approximate and may exceed standard
- "NAS" = No applicable standard; Guidance Value shown in parentheses if available
- "NA" = Parameter was not analyzed
- Potable water sample was collected from the Facility tap and represents the public water supply to the Property

Table 5-5
Groundwater Analytical Results Summary
Former Paxar Facility
Orangeburg, New York

Sample Location ID: Sample Date:			MW-7 10/28/2013	MW-7 2/18/2014	MW-7 5/7/2014	MW-7 8/4/2014	MW-9 11/13/2007	MW-9 12/15/2010	MW-9 10/13/2011	MW-9 3/7/2012	MW-9 10/17/2012	MW-9 10/30/2013	MW-9 2/18/2014	MW-9 5/7/2014
TCL Volatile Organic Compounds (8260B)	NYSDEC Standard	Type of Standard												
Acetone	50	POC	ND / 6	ND / 6	ND / 5	ND / 5	ND / 2.9	ND / 20	ND / 20	ND / 6	ND / 6	ND / 6	ND / 6	ND / 5
2-Butanone (MEK)	50	POC	ND / 3	ND / 3	ND / 5	ND / 5	ND / 2.7	ND / 10	ND / 10	ND / 3	ND / 3	ND / 3	ND / 3	ND / 5
1,1,1-Trichloroethane	5	POC	ND / 0.8	ND / 0.8	ND / 0.5	ND / 0.5	ND / 0.30	ND / 5	ND / 5	ND / 0.8	ND / 0.8	ND / 0.8	ND / 0.8	ND / 0.5
1,1-Dichloroethane	5	POC	ND / 1	ND / 1	ND / 0.5	ND / 0.5	ND / 0.20	ND / 5	ND / 5	ND / 1	ND / 1	ND / 1	ND / 1	ND / 0.5
1,2-Dichloroethane	0.6	GA Standard	ND / 0.5	ND / 0.5	ND / 0.5	ND / 0.5	ND / 0.29	ND / 1	ND / 1	ND / 1	ND / 0.5	ND / 0.5	ND / 0.5	ND / 0.5
cis-1,2-Dichloroethene	5	POC	ND / 0.8	ND / 0.8	ND / 0.5	ND / 0.5	ND / 0.27	ND / 5	ND / 5	ND / 0.8	ND / 0.8	ND / 0.8	ND / 0.8	ND / 0.5
1,1-Dichloroethene	5	POC	ND / 0.8	ND / 0.8	ND / 0.5	ND / 0.5	ND / 0.28	ND / 5	ND / 5	ND / 0.8	ND / 0.8	ND / 0.8	ND / 0.8	ND / 0.5
Methylene Chloride	5	POC	ND / 2	ND / 2	ND / 0.5	ND / 0.5	ND / 0.21	ND / 5	ND / 5	ND / 2	ND / 2	ND / 2	ND / 2	ND / 0.5
Tetrachloroethene	5	POC	ND / 0.8	ND / 0.8	ND / 0.5	ND / 0.5	ND / 0.28	ND / 5	ND / 5	ND / 0.8	ND / 0.8	ND / 0.8	ND / 0.8	ND / 0.5
Chloroform	7	GA Standard	ND / 0.8	ND / 0.8	ND / 0.5	ND / 0.5	ND / 0.25	ND / 5	ND / 5	ND / 0.8	ND / 0.8	ND / 0.8	ND / 0.8	ND / 0.5
Toluene	5	POC	ND / 0.7	ND / 0.7	ND / 0.5	ND / 0.5	ND / 0.21	ND / 5	ND / 5	ND / 0.7	ND / 0.7	ND / 0.7	ND / 0.7	ND / 0.5
Trichloroethene	5	POC	ND / 1	ND / 1	ND / 0.5	ND / 0.5	ND / 0.26	ND / 5	ND / 5	ND / 1	ND / 1	ND / 1	ND / 1	ND / 0.5
Bromodichloromethane	NAS (50)	Guidance Value	ND / 1	ND / 1	ND / 0.5	ND / 0.5	ND / 0.15	ND / 5	ND / 5	ND / 1	ND / 1	ND / 1	ND / 1	ND / 0.5
Dibromochloromethane	NAS (50)	Guidance Value	ND / 1	ND / 1	ND / 0.5	ND / 0.5	ND / 0.28	ND / 5	ND / 5	ND / 1	ND / 1	ND / 1	ND / 1	ND / 0.5
Isopropyl Alcohol (8015 DAI)														
Isopropyl Alcohol	NAS	--	NA	NA	NA	NA	ND / 25	NA	NA	NA	NA	NA	NA	NA
Total Petroleum Hydrocarbons (8015)														
GRO (C6-C10)	NAS	--	NA	NA	NA	NA	NA	NA	NA	NA	NA	NA	NA	NA
DRO (C10-C28)	NAS	--	NA	NA	NA	NA	NA	NA	NA	NA	NA	NA	NA	NA
ORO (>C28-C40)	NAS	--	NA	NA	NA	NA	NA	NA	NA	NA	NA	NA	NA	NA

Notes:

- All results are expressed in units of micrograms per liter (µg/L)
- Samples from 2007 were collected by ERM and analyzed by Accutest Laboratories
- Samples from 2010-2014 were collected by The Johnson Company, and were analyzed by Lancaster Laboratories
- ND / ## = Compound not detected above laboratory Method Detection Limit (MDL) or Practical Quantitation Limit (PQL), limit provided
- Values in **BOLD** typeface indicate detections
- J = Value is estimated by the laboratory, JB = value is estimated by the laboratory, compound was detected in equipment blank sample
- POC = NYSDEC Classification "Principal Organic Contaminant" for groundwater
- GA Standard = NYSDEC GA (fresh groundwaters) Guidance Value. (NYSDEC Div. of Water: Part 703: Surface Water and Groundwater Quality Limitations.)
- Shaded results indicate an exceedance to the GA or POC standard; results outlined in bold are approximate and may exceed standard
- "NAS" = No applicable standard; Guidance Value shown in parentheses if available
- "NA" = Parameter was not analyzed
- Potable water sample was collected from the Facility tap and represents the public water supply to the Property

Table 5-5
Groundwater Analytical Results Summary
Former Paxar Facility
Orangeburg, New York

Sample Location ID: Sample Date:			MW-9 8/7/2014	MW-10 11/13/2007	MW-10 12/15/2010	MW-10 10/11/2011	MW-10 3/7/2012	MW-10 10/16/2012	MW-10 10/29/2013	MW-10 2/11/2014	MW-10 5/5/2014	MW-10 8/4/2014	MW-11 11/13/2007	MW-11 12/15/2010
TCL Volatile Organic Compounds (8260B)	NYSDEC Standard	Type of Standard												
Acetone	50	POC	ND / 5	ND / 2.9	ND / 20	ND / 20	ND / 6	ND / 6	ND / 6	ND / 6	ND / 5	ND / 5	ND / 2.9	ND / 20
2-Butanone (MEK)	50	POC	ND / 5	ND / 2.7	ND / 10	ND / 10	ND / 3	ND / 3	ND / 3	ND / 3	ND / 5	ND / 5	ND / 2.7	ND / 10
1,1,1-Trichloroethane	5	POC	ND / 0.5	ND / 0.30	ND / 5	ND / 5	ND / 0.8	ND / 0.8	ND / 0.8	ND / 0.8	ND / 0.5	ND / 0.5	ND / 0.30	ND / 5
1,1-Dichloroethane	5	POC	ND / 0.5	ND / 0.20	ND / 5	ND / 5	ND / 1	ND / 1	ND / 1	ND / 1	ND / 0.5	ND / 0.5	ND / 0.20	ND / 5
1,2-Dichloroethane	0.6	GA Standard	ND / 0.5	ND / 0.29	ND / 1	ND / 1	ND / 1	ND / 0.5	ND / 0.5	ND / 0.5	ND / 0.5	ND / 0.5	ND / 0.29	ND / 1
cis-1,2-Dichloroethene	5	POC	ND / 0.5	ND / 0.27	ND / 5	ND / 5	ND / 0.8	ND / 0.8	ND / 0.8	ND / 0.8	ND / 0.5	ND / 0.5	ND / 0.27	ND / 5
1,1-Dichloroethene	5	POC	ND / 0.5	ND / 0.28	ND / 5	ND / 5	ND / 0.8	ND / 0.8	ND / 0.8	ND / 0.8	ND / 0.5	ND / 0.5	ND / 0.28	ND / 5
Methylene Chloride	5	POC	ND / 0.5	ND / 0.21	ND / 5	ND / 5	ND / 2	ND / 2	ND / 2	ND / 2	ND / 0.5	ND / 0.5	ND / 0.21	ND / 5
Tetrachloroethene	5	POC	ND / 0.5	ND / 0.28	ND / 5	ND / 5	ND / 0.8	ND / 0.8	ND / 0.8	ND / 0.8	ND / 0.5	ND / 0.5	0.46 J	ND / 5
Chloroform	7	GA Standard	ND / 0.5	ND / 0.25	ND / 5	ND / 5	ND / 0.8	ND / 0.8	ND / 0.8	ND / 0.8	ND / 0.5	ND / 0.5	ND / 0.25	ND / 5
Toluene	5	POC	ND / 0.5	ND / 0.21	ND / 5	ND / 5	ND / 0.7	ND / 0.7	ND / 0.7	ND / 0.7	ND / 0.5	ND / 0.5	ND / 0.21	ND / 5
Trichloroethene	5	POC	ND / 0.5	ND / 0.26	ND / 5	ND / 5	ND / 1	ND / 1	ND / 1	ND / 1	ND / 0.5	ND / 0.5	ND / 0.26	ND / 5
Bromodichloromethane	NAS (50)	Guidance Value	ND / 0.5	ND / 0.15	ND / 5	ND / 5	ND / 1	ND / 1	ND / 1	ND / 1	ND / 0.5	ND / 0.5	ND / 0.15	ND / 5
Dibromochloromethane	NAS (50)	Guidance Value	ND / 0.5	ND / 0.28	ND / 5	ND / 5	ND / 1	ND / 1	ND / 1	ND / 1	ND / 0.5	ND / 0.5	ND / 0.28	ND / 5
Isopropyl Alcohol (8015 DAI)														
Isopropyl Alcohol	NAS	--	NA	ND / 25	NA	NA	NA	NA	NA	NA	NA	NA	ND / 25	NA
Total Petroleum Hydrocarbons (8015)														
GRO (C6-C10)	NAS	--	NA	ND / 33	NA	NA	NA	NA	NA	NA	NA	NA	ND / 33	NA
DRO (C10-C28)	NAS	--	NA	ND / 20	NA	NA	NA	NA	NA	NA	NA	NA	ND / 19	NA
ORO (>C28-C40)	NAS	--	NA	ND / 57	NA	NA	NA	NA	NA	NA	NA	NA	ND / 55	NA

Notes:

- All results are expressed in units of micrograms per liter (µg/L)
- Samples from 2007 were collected by ERM and analyzed by Accutest Laboratories
- Samples from 2010-2014 were collected by The Johnson Company, and were analyzed by Lancaster Laboratories
- ND / ## = Compound not detected above laboratory Method Detection Limit (MDL) or Practical Quantitation Limit (PQL), limit provided
- Values in **BOLD** typeface indicate detections
- J = Value is estimated by the laboratory, JB = value is estimated by the laboratory, compound was detected in equipment blank sample
- POC = NYSDEC Classification "Principal Organic Contaminant" for groundwater
- GA Standard = NYSDEC GA (fresh groundwaters) Guidance Value. (NYSDEC Div. of Water: Part 703: Surface Water and Groundwater Quality Limitations.)
- Shaded results indicate an exceedance to the GA or POC standard; results outlined in bold are approximate and may exceed standard
- "NAS" = No applicable standard; Guidance Value shown in parentheses if available
- "NA" = Parameter was not analyzed
- Potable water sample was collected from the Facility tap and represents the public water supply to the Property

Table 5-5
Groundwater Analytical Results Summary
Former Paxar Facility
Orangeburg, New York

Sample Location ID: Sample Date:			MW-11 10/11/2011	MW-11 3/6/2012	MW-11 10/16/2012	MW-11 10/29/2013	MW-11 2/12/2014	MW-11 5/6/2014	MW-11 8/7/2014	MW-11D 10/29/2013	MW-11D 2/12/2014	MW-11D 5/6/2014	MW-11D 8/7/2014	MW-12 11/13/2007
TCL Volatile Organic Compounds (8260B)	NYSDEC Standard	Type of Standard												
Acetone	50	POC	ND / 20	ND / 6	ND / 6	ND / 6	ND / 6	ND / 5	ND / 5	ND / 6	ND / 6	ND / 5	ND / 5	ND / 2.9
2-Butanone (MEK)	50	POC	ND / 10	ND / 3	ND / 3	ND / 3	ND / 3	ND / 5	ND / 5	ND / 3	ND / 3	ND / 5	ND / 5	ND / 2.7
1,1,1-Trichloroethane	5	POC	ND / 5	ND / 0.8	ND / 0.8	ND / 0.8	ND / 0.8	ND / 0.5	ND / 0.5	ND / 0.8	ND / 0.8	ND / 0.5	ND / 0.5	ND / 0.30
1,1-Dichloroethane	5	POC	ND / 5	ND / 1	ND / 1	ND / 1	ND / 1	ND / 0.5	ND / 0.5	ND / 1	ND / 1	ND / 0.5	ND / 0.5	ND / 0.20
1,2-Dichloroethane	0.6	GA Standard	ND / 1	ND / 1	ND / 0.5	ND / 0.5	ND / 0.5	ND / 0.5	ND / 0.5	ND / 0.5	ND / 0.5	ND / 0.5	ND / 0.5	ND / 0.29
cis-1,2-Dichloroethene	5	POC	ND / 5	ND / 0.8	ND / 0.8	ND / 0.8	ND / 0.8	ND / 0.5	ND / 0.5	ND / 0.8	ND / 0.8	ND / 0.5	ND / 0.5	ND / 0.27
1,1-Dichloroethene	5	POC	ND / 5	ND / 0.8	ND / 0.8	ND / 0.8	ND / 0.8	ND / 0.5	ND / 0.5	ND / 0.8	ND / 0.8	ND / 0.5	ND / 0.5	ND / 0.28
Methylene Chloride	5	POC	ND / 5	ND / 2	ND / 2	ND / 2	ND / 2	ND / 0.5	ND / 0.5	ND / 2	ND / 2	ND / 0.5	ND / 0.5	ND / 0.21
Tetrachloroethene	5	POC	ND / 5	ND / 0.8	ND / 0.8	ND / 0.8	ND / 0.8	ND / 0.5	ND / 0.5	ND / 0.8	ND / 0.8	ND / 0.5	ND / 0.5	ND / 0.28
Chloroform	7	GA Standard	ND / 5	ND / 0.8	ND / 0.8	ND / 0.8	ND / 0.8	ND / 0.5	0.7	ND / 0.8	ND / 0.8	ND / 0.5	ND / 0.5	1.5
Toluene	5	POC	ND / 5	ND / 0.7	ND / 0.7	ND / 0.7	ND / 0.7	ND / 0.5	ND / 0.5	ND / 0.7	ND / 0.7	ND / 0.5	ND / 0.5	0.46 J
Trichloroethene	5	POC	ND / 5	ND / 1	ND / 1	ND / 1	ND / 1	ND / 0.5	ND / 0.5	ND / 1	ND / 1	ND / 0.5	ND / 0.5	ND / 0.26
Bromodichloromethane	NAS (50)	Guidance Value	ND / 5	ND / 1	ND / 1	ND / 1	ND / 1	ND / 0.5	ND / 0.5	ND / 1	ND / 1	ND / 0.5	ND / 0.5	ND / 0.15
Dibromochloromethane	NAS (50)	Guidance Value	ND / 5	ND / 1	ND / 1	ND / 1	ND / 1	ND / 0.5	ND / 0.5	ND / 1	ND / 1	ND / 0.5	ND / 0.5	ND / 0.28
Isopropyl Alcohol (8015 DAI)														
Isopropyl Alcohol	NAS	--	NA	NA	NA	NA	NA	NA	NA	NA	NA	NA	NA	ND / 25
Total Petroleum Hydrocarbons (8015)														
GRO (C6-C10)	NAS	--	NA	NA	NA	NA	NA	NA	NA	NA	NA	NA	NA	ND / 33
DRO (C10-C28)	NAS	--	NA	NA	NA	NA	NA	NA	NA	NA	NA	NA	NA	ND / 18
ORO (>C28-C40)	NAS	--	NA	NA	NA	NA	NA	NA	NA	NA	NA	NA	NA	ND / 53

Notes:

- All results are expressed in units of micrograms per liter (µg/L)
- Samples from 2007 were collected by ERM and analyzed by Accutest Laboratories
- Samples from 2010-2014 were collected by The Johnson Company, and were analyzed by Lancaster Laboratories
- ND / ## = Compound not detected above laboratory Method Detection Limit (MDL) or Practical Quantitation Limit (PQL), limit provided
- Values in **BOLD** typeface indicate detections
- J = Value is estimated by the laboratory, JB = value is estimated by the laboratory, compound was detected in equipment blank sample
- POC = NYSDEC Classification "Principal Organic Contaminant" for groundwater
- GA Standard = NYSDEC GA (fresh groundwaters) Guidance Value. (NYSDEC Div. of Water: Part 703: Surface Water and Groundwater Quality Limitations.)
- Shaded results indicate an exceedance to the GA or POC standard; results outlined in bold are approximate and may exceed standard
- "NAS" = No applicable standard; Guidance Value shown in parentheses if available
- "NA" = Parameter was not analyzed
- Potable water sample was collected from the Facility tap and represents the public water supply to the Property

Table 5-5
Groundwater Analytical Results Summary
Former Paxar Facility
Orangeburg, New York

Sample Location ID: Sample Date:			MW-12 12/13/2010	MW-12 10/11/2011	MW-12 3/6/2012	MW-12 10/16/2012	MW-12 10/28/2013	MW-12 2/11/2014	MW-12 5/6/2014	MW-12 8/4/2014	MW-13 12/14/2010	MW-13 10/11/2011	MW-13 3/6/2012	MW-13 10/15/2012
TCL Volatile Organic Compounds (8260B)	NYSDEC Standard	Type of Standard												
Acetone	50	POC	ND / 20	ND / 20	ND / 6	ND / 6	ND / 6	ND / 6	ND / 5	ND / 5	ND / 20	ND / 20	ND / 6	ND / 6
2-Butanone (MEK)	50	POC	ND / 10	ND / 10	ND / 3	ND / 3	ND / 3	ND / 3	ND / 5	ND / 5	ND / 10	ND / 10	ND / 3	ND / 3
1,1,1-Trichloroethane	5	POC	ND / 5	ND / 5	ND / 0.8	ND / 0.8	ND / 0.8	ND / 0.8	ND / 0.5	ND / 0.5	ND / 5	ND / 5	ND / 0.8	ND / 0.8
1,1-Dichloroethane	5	POC	ND / 5	ND / 5	ND / 1	ND / 1	ND / 1	ND / 1	ND / 0.5	ND / 0.5	ND / 5	ND / 5	ND / 1	ND / 1
1,2-Dichloroethane	0.6	GA Standard	ND / 1	ND / 1	ND / 1	ND / 0.5	ND / 0.5	ND / 0.5	ND / 0.5	ND / 0.5	ND / 1	ND / 1	ND / 1	ND / 0.5
cis-1,2-Dichloroethene	5	POC	ND / 5	ND / 5	ND / 0.8	ND / 0.8	ND / 0.8	ND / 0.8	ND / 0.5	ND / 0.5	ND / 5	ND / 5	ND / 0.8	ND / 0.8
1,1-Dichloroethene	5	POC	ND / 5	ND / 5	ND / 0.8	ND / 0.8	ND / 0.8	ND / 0.8	ND / 0.5	ND / 0.5	ND / 5	ND / 5	ND / 0.8	ND / 0.8
Methylene Chloride	5	POC	ND / 5	ND / 5	ND / 2	ND / 2	ND / 2	ND / 2	ND / 0.5	ND / 0.5	ND / 5	ND / 5	ND / 2	ND / 2
Tetrachloroethene	5	POC	ND / 5	ND / 5	ND / 0.8	ND / 0.8	ND / 0.8	ND / 0.8	ND / 0.5	ND / 0.5	ND / 5	ND / 5	ND / 0.8	ND / 0.8
Chloroform	7	GA Standard	ND / 5	ND / 5	ND / 0.8	ND / 0.8	ND / 0.8	ND / 0.8	ND / 0.5	ND / 0.5	ND / 5	ND / 5	ND / 0.8	ND / 0.8
Toluene	5	POC	ND / 5	ND / 5	ND / 0.7	ND / 0.7	ND / 0.7	ND / 0.7	ND / 0.5	ND / 0.5	ND / 5	ND / 5	ND / 0.7	ND / 0.7
Trichloroethene	5	POC	ND / 5	ND / 5	ND / 1	ND / 1	ND / 1	ND / 1	ND / 0.5	ND / 0.5	ND / 5	ND / 5	ND / 1	ND / 1
Bromodichloromethane	NAS (50)	Guidance Value	ND / 5	ND / 5	ND / 1	ND / 1	ND / 1	ND / 1	ND / 0.5	ND / 0.5	ND / 5	ND / 5	ND / 1	ND / 1
Dibromochloromethane	NAS (50)	Guidance Value	ND / 5	ND / 5	ND / 1	ND / 1	ND / 1	ND / 1	ND / 0.5	ND / 0.5	ND / 5	ND / 5	ND / 1	ND / 1
Isopropyl Alcohol (8015 DAI)														
Isopropyl Alcohol	NAS	--	NA	NA	NA	NA	NA	NA	NA	NA	NA	NA	NA	NA
Total Petroleum Hydrocarbons (8015)														
GRO (C6-C10)	NAS	--	NA	NA	NA	NA	NA	NA	NA	NA	NA	NA	NA	NA
DRO (C10-C28)	NAS	--	NA	NA	NA	NA	NA	NA	NA	NA	NA	NA	NA	NA
ORO (>C28-C40)	NAS	--	NA	NA	NA	NA	NA	NA	NA	NA	NA	NA	NA	NA

Notes:

1. All results are expressed in units of micrograms per liter (µg/L)
2. Samples from 2007 were collected by ERM and analyzed by Accutest Laboratories
3. Samples from 2010-2014 were collected by The Johnson Company, and were analyzed by Lancaster Laboratories
4. ND / ## = Compound not detected above laboratory Method Detection Limit (MDL) or Practical Quantitation Limit (PQL), limit provided
5. Values in **BOLD** typeface indicate detections
6. J = Value is estimated by the laboratory, JB = value is estimated by the laboratory, compound was detected in equipment blank sample
7. POC = NYSDEC Classification "Principal Organic Contaminant" for groundwater
8. GA Standard = NYSDEC GA (fresh groundwaters) Guidance Value. (NYSDEC Div. of Water: Part 703: Surface Water and Groundwater Quality Limitations.)
9. Shaded results indicate an exceedance to the GA or POC standard; results outlined in bold are approximate and may exceed standard
10. "NAS" = No applicable standard; Guidance Value shown in parentheses if available
11. "NA" = Parameter was not analyzed
12. Potable water sample was collected from the Facility tap and represents the public water supply to the Property

Table 5-5
Groundwater Analytical Results Summary
Former Paxar Facility
Orangeburg, New York

Sample Location ID: Sample Date:			MW-13 10/28/2013	MW-13 2/11/2014	MW-13 5/6/2014	MW-13 8/5/2014	MW-14 12/14/2010	MW-14 10/11/2011	MW-14 3/6/2012	MW-14 10/16/2012	MW-14 10/28/2013	MW-14 2/11/2014	MW-14 5/6/2014	MW-14 8/5/2014
TCL Volatile Organic Compounds (8260B)	NYSDEC Standard	Type of Standard												
Acetone	50	POC	ND / 6	15 J	ND / 5	ND / 5	ND / 20	ND / 20	ND / 6	ND / 6	ND / 6	ND / 6	ND / 5	ND / 5
2-Butanone (MEK)	50	POC	ND / 3	5 JB	ND / 5	ND / 5	ND / 10	ND / 10	ND / 3	ND / 3	ND / 3	ND / 3	ND / 5	ND / 5
1,1,1-Trichloroethane	5	POC	ND / 0.8	ND / 0.8	ND / 0.5	ND / 0.5	ND / 5	ND / 5	ND / 0.8	ND / 0.8	ND / 0.8	ND / 0.8	ND / 0.5	ND / 0.5
1,1-Dichloroethane	5	POC	ND / 1	ND / 1	ND / 0.5	ND / 0.5	ND / 5	ND / 5	ND / 1	ND / 1	ND / 1	ND / 1	ND / 0.5	ND / 0.5
1,2-Dichloroethane	0.6	GA Standard	ND / 0.5	ND / 0.5	ND / 0.5	ND / 0.5	ND / 1	ND / 1	ND / 1	ND / 0.5	ND / 0.5	ND / 0.5	ND / 0.5	ND / 0.5
cis-1,2-Dichloroethene	5	POC	ND / 0.8	ND / 0.8	ND / 0.5	ND / 0.5	ND / 5	ND / 5	ND / 0.8	ND / 0.8	ND / 0.8	ND / 0.8	ND / 0.5	ND / 0.5
1,1-Dichloroethene	5	POC	ND / 0.8	ND / 0.8	ND / 0.5	ND / 0.5	ND / 5	ND / 5	ND / 0.8	ND / 0.8	ND / 0.8	ND / 0.8	ND / 0.5	ND / 0.5
Methylene Chloride	5	POC	ND / 2	ND / 2	ND / 0.5	ND / 0.5	ND / 5	ND / 5	ND / 2	ND / 2	ND / 2	ND / 2	ND / 0.5	ND / 0.5
Tetrachloroethene	5	POC	ND / 0.8	ND / 0.8	ND / 0.5	ND / 0.5	ND / 5	ND / 5	ND / 0.8	ND / 0.8	ND / 0.8	ND / 0.8	ND / 0.5	ND / 0.5
Chloroform	7	GA Standard	ND / 0.8	1 J	ND / 0.5	ND / 0.5	ND / 5	ND / 5	ND / 0.8	ND / 0.8	ND / 0.8	ND / 0.8	ND / 0.5	ND / 0.5
Toluene	5	POC	ND / 0.7	ND / 0.7	ND / 0.5	ND / 0.5	ND / 5	ND / 5	ND / 0.7	ND / 0.7	ND / 0.7	ND / 0.7	ND / 0.5	ND / 0.5
Trichloroethene	5	POC	ND / 1	ND / 1	ND / 0.5	ND / 0.5	ND / 5	ND / 5	ND / 1	ND / 1	ND / 1	ND / 1	ND / 0.5	ND / 0.5
Bromodichloromethane	NAS (50)	Guidance Value	ND / 1	ND / 1	ND / 0.5	ND / 0.5	ND / 5	ND / 5	ND / 1	ND / 1	ND / 1	ND / 1	ND / 0.5	ND / 0.5
Dibromochloromethane	NAS (50)	Guidance Value	ND / 1	ND / 1	ND / 0.5	ND / 0.5	ND / 5	ND / 5	ND / 1	ND / 1	ND / 1	ND / 1	ND / 0.5	ND / 0.5
Isopropyl Alcohol (8015 DAI)														
Isopropyl Alcohol	NAS	--	NA	NA	NA	NA	NA	NA	NA	NA	NA	NA	NA	NA
Total Petroleum Hydrocarbons (8015)														
GRO (C6-C10)	NAS	--	NA	NA	NA	NA	NA	NA	NA	NA	NA	NA	NA	NA
DRO (C10-C28)	NAS	--	NA	NA	NA	NA	NA	NA	NA	NA	NA	NA	NA	NA
ORO (>C28-C40)	NAS	--	NA	NA	NA	NA	NA	NA	NA	NA	NA	NA	NA	NA

Notes:

1. All results are expressed in units of micrograms per liter (µg/L)
2. Samples from 2007 were collected by ERM and analyzed by Accutest Laboratories
3. Samples from 2010-2014 were collected by The Johnson Company, and were analyzed by Lancaster Laboratories
4. ND / ## = Compound not detected above laboratory Method Detection Limit (MDL) or Practical Quantitation Limit (PQL), limit provided
5. Values in **BOLD** typeface indicate detections
6. J = Value is estimated by the laboratory, JB = value is estimated by the laboratory, compound was detected in equipment blank sample
7. POC = NYSDEC Classification "Principal Organic Contaminant" for groundwater
8. GA Standard = NYSDEC GA (fresh groundwaters) Guidance Value. (NYSDEC Div. of Water: Part 703: Surface Water and Groundwater Quality Limitations.)
9. Shaded results indicate an exceedance to the GA or POC standard; results outlined in bold are approximate and may exceed standard
10. "NAS" = No applicable standard; Guidance Value shown in parentheses if available
11. "NA" = Parameter was not analyzed
12. Potable water sample was collected from the Facility tap and represents the public water supply to the Property

Table 5-5
Groundwater Analytical Results Summary
Former Paxar Facility
Orangeburg, New York

Sample Location ID: Sample Date:			MW-15 12/14/2010	MW-15 10/10/2011	MW-15 3/6/2012	MW-15 10/16/2012	MW-15 10/28/2013	MW-15 2/11/2014	MW-15 5/6/2014	MW-15 8/5/2014	MW-16 12/15/2010	MW-16 10/11/2011	MW-16 3/6/2012	MW-16 10/16/2012
TCL Volatile Organic Compounds (8260B)	NYSDEC Standard	Type of Standard												
Acetone	50	POC	ND / 20	ND / 20	ND / 6	ND / 6	ND / 6	ND / 6	ND / 5	ND / 5	ND / 20	ND / 20	ND / 6	ND / 6
2-Butanone (MEK)	50	POC	ND / 10	ND / 10	ND / 3	ND / 3	ND / 3	ND / 3	ND / 5	ND / 5	ND / 10	ND / 10	ND / 3	ND / 3
1,1,1-Trichloroethane	5	POC	ND / 5	ND / 5	ND / 0.8	ND / 0.8	ND / 0.8	ND / 0.8	ND / 0.5	ND / 0.5	ND / 5	ND / 5	ND / 0.8	ND / 0.8
1,1-Dichloroethane	5	POC	ND / 5	ND / 5	ND / 1	ND / 1	ND / 1	ND / 1	ND / 0.5	ND / 0.5	ND / 5	ND / 5	ND / 1	ND / 1
1,2-Dichloroethane	0.6	GA Standard	ND / 1	ND / 1	ND / 1	ND / 0.5	ND / 0.5	ND / 0.5	ND / 0.5	ND / 0.5	ND / 1	ND / 1	ND / 1	ND / 0.5
cis-1,2-Dichloroethene	5	POC	ND / 5	ND / 5	ND / 0.8	ND / 0.8	ND / 0.8	ND / 0.8	ND / 0.5	ND / 0.5	ND / 5	ND / 5	1 J	ND / 0.8
1,1-Dichloroethene	5	POC	ND / 5	ND / 5	ND / 0.8	ND / 0.8	ND / 0.8	ND / 0.8	ND / 0.5	ND / 0.5	ND / 5	ND / 5	ND / 0.8	ND / 0.8
Methylene Chloride	5	POC	ND / 5	ND / 5	ND / 2	ND / 2	ND / 2	ND / 2	ND / 0.5	ND / 0.5	ND / 5	ND / 5	4 J	ND / 2
Tetrachloroethene	5	POC	ND / 5	ND / 5	ND / 0.8	ND / 0.8	ND / 0.8	ND / 0.8	ND / 0.5	ND / 0.5	ND / 5	ND / 5	ND / 0.8	ND / 0.8
Chloroform	7	GA Standard	ND / 5	ND / 5	ND / 0.8	ND / 0.8	ND / 0.8	ND / 0.8	ND / 0.5	ND / 0.5	34	ND / 5	10	15
Toluene	5	POC	ND / 5	ND / 5	ND / 0.7	ND / 0.7	ND / 0.7	ND / 0.7	ND / 0.5	ND / 0.5	ND / 5	ND / 5	ND / 0.7	ND / 0.7
Trichloroethene	5	POC	ND / 5	ND / 5	ND / 1	ND / 1	ND / 1	ND / 1	ND / 0.5	ND / 0.5	ND / 5	ND / 5	ND / 1	ND / 1
Bromodichloromethane	NAS (50)	Guidance Value	ND / 5	ND / 5	ND / 1	ND / 1	ND / 1	ND / 1	ND / 0.5	ND / 0.5	ND / 5	ND / 5	ND / 1	ND / 1
Dibromochloromethane	NAS (50)	Guidance Value	ND / 5	ND / 5	ND / 1	ND / 1	ND / 1	ND / 1	ND / 0.5	ND / 0.5	ND / 5	ND / 5	ND / 1	ND / 1
Isopropyl Alcohol (8015 DAI)														
Isopropyl Alcohol	NAS	--	NA	NA	NA	NA	NA	NA	NA	NA	NA	NA	NA	NA
Total Petroleum Hydrocarbons (8015)														
GRO (C6-C10)	NAS	--	NA	NA	NA	NA	NA	NA	NA	NA	NA	NA	NA	NA
DRO (C10-C28)	NAS	--	NA	NA	NA	NA	NA	NA	NA	NA	NA	NA	NA	NA
ORO (>C28-C40)	NAS	--	NA	NA	NA	NA	NA	NA	NA	NA	NA	NA	NA	NA

Notes:

- All results are expressed in units of micrograms per liter (µg/L)
- Samples from 2007 were collected by ERM and analyzed by Accutest Laboratories
- Samples from 2010-2014 were collected by The Johnson Company, and were analyzed by Lancaster Laboratories
- ND / ## = Compound not detected above laboratory Method Detection Limit (MDL) or Practical Quantitation Limit (PQL), limit provided
- Values in **BOLD** typeface indicate detections
- J = Value is estimated by the laboratory, JB = value is estimated by the laboratory, compound was detected in equipment blank sample
- POC = NYSDEC Classification "Principal Organic Contaminant" for groundwater
- GA Standard = NYSDEC GA (fresh groundwaters) Guidance Value. (NYSDEC Div. of Water: Part 703: Surface Water and Groundwater Quality Limitations.)
- Shaded results indicate an exceedance to the GA or POC standard; results outlined in bold are approximate and may exceed standard
- "NAS" = No applicable standard; Guidance Value shown in parentheses if available
- "NA" = Parameter was not analyzed
- Potable water sample was collected from the Facility tap and represents the public water supply to the Property

Table 5-5
Groundwater Analytical Results Summary
Former Paxar Facility
Orangeburg, New York

Sample Location ID: Sample Date:			MW-16 10/28/2013	MW-16 2/11/2014	MW-16 5/6/2014	MW-16 5/6/2014	MW-16 8/5/2014	MW-16 8/5/2014	MW-16D 10/28/2013	MW-16D 2/11/2014	MW-16D 5/6/2014	MW-16D 8/5/2014	MW-17 3/7/2012	MW-17 10/17/2012
TCL Volatile Organic Compounds (8260B)	NYSDEC Standard	Type of Standard				Duplicate		Duplicate						
Acetone	50	POC	ND / 6	ND / 6	ND / 5	ND / 5	ND / 5	ND / 5	ND / 6	ND / 6	ND / 5	ND / 5	ND / 6	ND / 6
2-Butanone (MEK)	50	POC	ND / 3	ND / 3	ND / 5	ND / 5	ND / 5	ND / 5	ND / 3	ND / 3	ND / 5	ND / 5	ND / 3	ND / 3
1,1,1-Trichloroethane	5	POC	ND / 0.8	ND / 0.8	ND / 0.5	ND / 0.5	ND / 0.5	ND / 0.5	ND / 0.8	ND / 0.8	ND / 0.5	ND / 0.5	ND / 0.8	ND / 0.8
1,1-Dichloroethane	5	POC	ND / 1	ND / 1	ND / 0.5	ND / 0.5	ND / 0.5	ND / 0.5	ND / 1	ND / 1	ND / 0.5	ND / 0.5	ND / 1	ND / 1
1,2-Dichloroethane	0.6	GA Standard	ND / 0.5	ND / 0.5	ND / 0.5	ND / 0.5	ND / 0.5	ND / 0.5	ND / 0.5	ND / 0.5	ND / 0.5	ND / 0.5	ND / 1	ND / 0.5
cis-1,2-Dichloroethene	5	POC	ND / 0.8	ND / 0.8	3.8	3.9	0.8	0.8	ND / 0.8	ND / 0.8	2.3	3.4	ND / 0.8	ND / 0.8
1,1-Dichloroethene	5	POC	ND / 0.8	ND / 0.8	ND / 0.5	ND / 0.5	ND / 0.5	ND / 0.5	ND / 0.8	ND / 0.8	ND / 0.5	ND / 0.5	ND / 0.8	ND / 0.8
Methylene Chloride	5	POC	ND / 2	ND / 2	ND / 0.5	ND / 0.5	ND / 0.5	ND / 0.5	ND / 2	ND / 2	ND / 0.5	ND / 0.5	ND / 2	ND / 2
Tetrachloroethene	5	POC	ND / 0.8	ND / 0.8	ND / 0.5	ND / 0.5	ND / 0.5	ND / 0.5	ND / 0.8	ND / 0.8	ND / 0.5	ND / 0.5	ND / 0.8	ND / 0.8
Chloroform	7	GA Standard	6	19	0.6	0.6	ND / 0.5	ND / 0.5	1 J	ND / 0.8	ND / 0.5	ND / 0.5	ND / 0.8	ND / 0.8
Toluene	5	POC	ND / 0.7	ND / 0.7	ND / 0.5	ND / 0.5	ND / 0.5	ND / 0.5	ND / 0.7	ND / 0.7	ND / 0.5	ND / 0.5	ND / 0.7	ND / 0.7
Trichloroethene	5	POC	ND / 1	ND / 1	0.8	0.8	ND / 0.5	ND / 0.5	ND / 1	ND / 1	ND / 0.5	0.7	ND / 1	ND / 1
Bromodichloromethane	NAS (50)	Guidance Value	ND / 1	3 J	ND / 0.5	ND / 0.5	ND / 0.5	ND / 0.5	ND / 1	ND / 1	ND / 0.5	ND / 0.5	ND / 1	ND / 1
Dibromochloromethane	NAS (50)	Guidance Value	ND / 1	ND / 1	ND / 0.5	ND / 0.5	ND / 0.5	ND / 0.5	ND / 1	ND / 1	ND / 0.5	ND / 0.5	ND / 1	ND / 1
Isopropyl Alcohol (8015 DAI)														
Isopropyl Alcohol	NAS	--	NA	NA	NA	NA	NA	NA	NA	NA	NA	NA	NA	NA
Total Petroleum Hydrocarbons (8015)														
GRO (C6-C10)	NAS	--	NA	NA	NA	NA	NA	NA	NA	NA	NA	NA	NA	NA
DRO (C10-C28)	NAS	--	NA	NA	NA	NA	NA	NA	NA	NA	NA	NA	NA	NA
ORO (>C28-C40)	NAS	--	NA	NA	NA	NA	NA	NA	NA	NA	NA	NA	NA	NA

Notes:

- All results are expressed in units of micrograms per liter (µg/L)
- Samples from 2007 were collected by ERM and analyzed by Accutest Laboratories
- Samples from 2010-2014 were collected by The Johnson Company, and were analyzed by Lancaster Laboratories
- ND / ## = Compound not detected above laboratory Method Detection Limit (MDL) or Practical Quantitation Limit (PQL), limit provided
- Values in **BOLD** typeface indicate detections
- J = Value is estimated by the laboratory, JB = value is estimated by the laboratory, compound was detected in equipment blank sample
- POC = NYSDEC Classification "Principal Organic Contaminant" for groundwater
- GA Standard = NYSDEC GA (fresh groundwaters) Guidance Value. (NYSDEC Div. of Water: Part 703: Surface Water and Groundwater Quality Limitations.)
- Shaded results indicate an exceedance to the GA or POC standard; results outlined in bold are approximate and may exceed standard
- "NAS" = No applicable standard; Guidance Value shown in parentheses if available
- "NA" = Parameter was not analyzed
- Potable water sample was collected from the Facility tap and represents the public water supply to the Property

Table 5-5
Groundwater Analytical Results Summary
Former Paxar Facility
Orangeburg, New York

Sample Location ID: Sample Date:			MW-17 10/29/2013	MW-17 2/10/2014	MW-17 5/7/2014	MW-17 8/7/2014	MW-18 3/7/2012	MW-18 10/16/2012	MW-18 10/29/2013	MW-18 2/10/2014	MW-18 5/7/2014	MW-18 8/7/2014	MW-19 10/29/2013	MW-19 10/29/2013
TCL Volatile Organic Compounds (8260B)	NYSDEC Standard	Type of Standard												Duplicate
Acetone	50	POC	ND / 6	ND / 6	ND / 5	ND / 5	ND / 6	ND / 6	ND / 6	ND / 6	ND / 5	ND / 5	ND / 6	ND / 6
2-Butanone (MEK)	50	POC	ND / 3	ND / 3	ND / 5	ND / 5	ND / 3	ND / 3	ND / 3	ND / 3	ND / 5	ND / 5	ND / 3	ND / 3
1,1,1-Trichloroethane	5	POC	ND / 0.8	ND / 0.8	ND / 0.5	ND / 0.5	ND / 0.8	ND / 0.8	ND / 0.8	ND / 0.8	ND / 0.5	ND / 0.5	ND / 0.8	ND / 0.8
1,1-Dichloroethane	5	POC	ND / 1	ND / 1	ND / 0.5	ND / 0.5	ND / 1	ND / 1	ND / 1	ND / 1	ND / 0.5	ND / 0.5	3 J	3 J
1,2-Dichloroethane	0.6	GA Standard	ND / 0.5	ND / 0.5	ND / 0.5	ND / 0.5	ND / 1	ND / 0.5	ND / 0.5	ND / 0.5	ND / 0.5	ND / 0.5	ND / 0.5	ND / 0.5
cis-1,2-Dichloroethene	5	POC	ND / 0.8	ND / 0.8	ND / 0.5	ND / 0.5	ND / 0.8	ND / 0.8	ND / 0.8	ND / 0.8	ND / 0.5	ND / 0.5	ND / 0.8	ND / 0.8
1,1-Dichloroethene	5	POC	ND / 0.8	ND / 0.8	ND / 0.5	ND / 0.5	ND / 0.8	ND / 0.8	ND / 0.8	ND / 0.8	ND / 0.5	ND / 0.5	ND / 0.8	ND / 0.8
Methylene Chloride	5	POC	ND / 2	ND / 2	ND / 0.5	ND / 0.5	ND / 2	ND / 2	ND / 2	ND / 2	ND / 0.5	ND / 0.5	ND / 2	ND / 2
Tetrachloroethene	5	POC	ND / 0.8	ND / 0.8	ND / 0.5	ND / 0.5	ND / 0.8	ND / 0.8	ND / 0.8	ND / 0.8	ND / 0.5	ND / 0.5	ND / 0.8	ND / 0.8
Chloroform	7	GA Standard	ND / 0.8	ND / 0.8	ND / 0.5	ND / 0.5	ND / 0.8	ND / 0.8	ND / 0.8	ND / 0.8	ND / 0.5	ND / 0.5	ND / 0.8	ND / 0.8
Toluene	5	POC	ND / 0.7	ND / 0.7	ND / 0.5	ND / 0.5	ND / 0.7	ND / 0.7	ND / 0.7	ND / 0.7	ND / 0.5	ND / 0.5	ND / 0.7	ND / 0.7
Trichloroethene	5	POC	ND / 1	ND / 1	ND / 0.5	ND / 0.5	ND / 1	ND / 1	ND / 1	ND / 1	ND / 0.5	ND / 0.5	ND / 1	ND / 1
Bromodichloromethane	NAS (50)	Guidance Value	ND / 1	ND / 1	ND / 0.5	ND / 0.5	ND / 1	ND / 1	ND / 1	ND / 1	ND / 0.5	ND / 0.5	ND / 1	ND / 1
Dibromochloromethane	NAS (50)	Guidance Value	ND / 1	ND / 1	ND / 0.5	ND / 0.5	ND / 1	ND / 1	ND / 1	ND / 1	ND / 0.5	ND / 0.5	ND / 1	ND / 1
Isopropyl Alcohol (8015 DAI)														
Isopropyl Alcohol	NAS	--	NA	NA	NA	NA	NA	NA	NA	NA	NA	NA	NA	NA
Total Petroleum Hydrocarbons (8015)														
GRO (C6-C10)	NAS	--	NA	NA	NA	NA	NA	NA	NA	NA	NA	NA	NA	NA
DRO (C10-C28)	NAS	--	NA	NA	NA	NA	NA	NA	NA	NA	NA	NA	NA	NA
ORO (>C28-C40)	NAS	--	NA	NA	NA	NA	NA	NA	NA	NA	NA	NA	NA	NA

Notes:

- All results are expressed in units of micrograms per liter (µg/L)
- Samples from 2007 were collected by ERM and analyzed by Accutest Laboratories
- Samples from 2010-2014 were collected by The Johnson Company, and were analyzed by Lancaster Laboratories
- ND / ## = Compound not detected above laboratory Method Detection Limit (MDL) or Practical Quantitation Limit (PQL), limit provided
- Values in **BOLD** typeface indicate detections
- J = Value is estimated by the laboratory, JB = value is estimated by the laboratory, compound was detected in equipment blank sample
- POC = NYSDEC Classification "Principal Organic Contaminant" for groundwater
- GA Standard = NYSDEC GA (fresh groundwaters) Guidance Value. (NYSDEC Div. of Water: Part 703: Surface Water and Groundwater Quality Limitations.)
- Shaded results indicate an exceedance to the GA or POC standard; results outlined in bold are approximate and may exceed standard
- "NAS" = No applicable standard; Guidance Value shown in parentheses if available
- "NA" = Parameter was not analyzed
- Potable water sample was collected from the Facility tap and represents the public water supply to the Property

Table 5-5
Groundwater Analytical Results Summary
Former Paxar Facility
Orangeburg, New York

Sample Location ID: Sample Date:			MW-19 2/12/2014	MW-19 5/5/2014	MW-19 8/4/2014	MW-19D 10/29/2013	MW-19D 2/12/2014	MW-19D 2/12/2014	MW-19D 5/5/2014	MW-19D 8/4/2014	MW-20 10/29/2013	MW-20 2/19/2014	MW-20 5/7/2014	MW-20 8/5/2014
TCL Volatile Organic Compounds (8260B)	NYSDEC Standard	Type of Standard						Duplicate						
Acetone	50	POC	21	ND / 5	ND / 5	ND / 6	ND / 6	ND / 6	ND / 5	ND / 5	ND / 6	ND / 6	ND / 5	ND / 5
2-Butanone (MEK)	50	POC	5 JB	ND / 5	ND / 5	ND / 3	ND / 3	ND / 3	ND / 5	ND / 5	ND / 3	ND / 3	ND / 5	ND / 5
1,1,1-Trichloroethane	5	POC	ND / 0.8	ND / 0.5	ND / 0.5	ND / 0.8	ND / 0.8	ND / 0.8	ND / 0.5	ND / 0.5	ND / 0.8	ND / 0.8	ND / 0.5	ND / 0.5
1,1-Dichloroethane	5	POC	1 J	0.6	2.4	ND / 1	ND / 1	ND / 1	ND / 0.5	ND / 0.5	1 J	1 J	1.0	1.0
1,2-Dichloroethane	0.6	GA Standard	ND / 0.5	ND / 0.5	ND / 0.5	ND / 0.5	ND / 0.5	ND / 0.5	ND / 0.5	ND / 0.5	ND / 0.5	ND / 0.5	ND / 0.5	ND / 0.5
cis-1,2-Dichloroethene	5	POC	ND / 0.8	ND / 0.5	ND / 0.5	ND / 0.8	ND / 0.8	ND / 0.8	ND / 0.5	ND / 0.5	ND / 0.8	ND / 0.8	ND / 0.5	ND / 0.5
1,1-Dichloroethene	5	POC	ND / 0.8	ND / 0.5	ND / 0.5	ND / 0.8	ND / 0.8	ND / 0.8	ND / 0.5	ND / 0.5	ND / 0.8	ND / 0.8	ND / 0.5	ND / 0.5
Methylene Chloride	5	POC	ND / 2	ND / 0.5	ND / 0.5	ND / 2	ND / 2	ND / 2	ND / 0.5	ND / 0.5	ND / 2	ND / 2	ND / 0.5	ND / 0.5
Tetrachloroethene	5	POC	ND / 0.8	ND / 0.5	ND / 0.5	ND / 0.8	ND / 0.8	ND / 0.8	ND / 0.5	ND / 0.5	ND / 0.8	ND / 0.8	ND / 0.5	ND / 0.5
Chloroform	7	GA Standard	ND / 0.8	ND / 0.5	ND / 0.5	ND / 0.8	ND / 0.8	ND / 0.8	ND / 0.5	ND / 0.5	ND / 0.8	ND / 0.8	ND / 0.5	ND / 0.5
Toluene	5	POC	ND / 0.7	ND / 0.5	ND / 0.5	ND / 0.7	ND / 0.7	ND / 0.7	ND / 0.5	ND / 0.5	ND / 0.7	ND / 0.7	ND / 0.5	ND / 0.5
Trichloroethene	5	POC	ND / 1	ND / 0.5	ND / 0.5	ND / 1	ND / 1	ND / 1	ND / 0.5	ND / 0.5	ND / 1	ND / 1	ND / 0.5	ND / 0.5
Bromodichloromethane	NAS (50)	Guidance Value	ND / 1	ND / 0.5	ND / 0.5	ND / 1	ND / 1	ND / 1	ND / 0.5	ND / 0.5	ND / 1	ND / 1	ND / 0.5	ND / 0.5
Dibromochloromethane	NAS (50)	Guidance Value	ND / 1	ND / 0.5	ND / 0.5	ND / 1	ND / 1	ND / 1	ND / 0.5	ND / 0.5	ND / 1	ND / 1	ND / 0.5	ND / 0.5
Isopropyl Alcohol (8015 DAI)														
Isopropyl Alcohol	NAS	--	NA	NA	NA	NA	NA	NA	NA	NA	NA	NA	NA	NA
Total Petroleum Hydrocarbons (8015)														
GRO (C6-C10)	NAS	--	NA	NA	NA	NA	NA	NA	NA	NA	NA	NA	NA	NA
DRO (C10-C28)	NAS	--	NA	NA	NA	NA	NA	NA	NA	NA	NA	NA	NA	NA
ORO (>C28-C40)	NAS	--	NA	NA	NA	NA	NA	NA	NA	NA	NA	NA	NA	NA

Notes:

- All results are expressed in units of micrograms per liter (µg/L)
- Samples from 2007 were collected by ERM and analyzed by Accutest Laboratories
- Samples from 2010-2014 were collected by The Johnson Company, and were analyzed by Lancaster Laboratories
- ND / ## = Compound not detected above laboratory Method Detection Limit (MDL) or Practical Quantitation Limit (PQL), limit provided
- Values in **BOLD** typeface indicate detections
- J = Value is estimated by the laboratory, JB = value is estimated by the laboratory, compound was detected in equipment blank sample
- POC = NYSDEC Classification "Principal Organic Contaminant" for groundwater
- GA Standard = NYSDEC GA (fresh groundwaters) Guidance Value. (NYSDEC Div. of Water: Part 703: Surface Water and Groundwater Quality Limitations.)
- Shaded results indicate an exceedance to the GA or POC standard; results outlined in bold are approximate and may exceed standard
- "NAS" = No applicable standard; Guidance Value shown in parentheses if available
- "NA" = Parameter was not analyzed
- Potable water sample was collected from the Facility tap and represents the public water supply to the Property

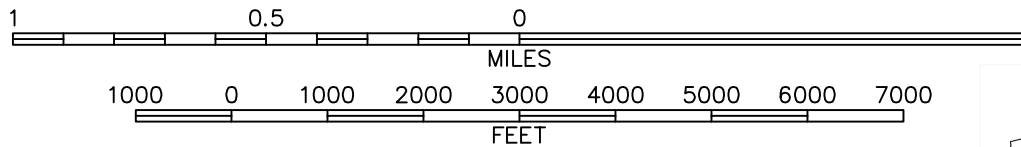
Table 5-5
Groundwater Analytical Results Summary
Former Paxar Facility
Orangeburg, New York

Sample Location ID: MW-20D			MW-20D	MW-20D	MW-20D	MW-20D	Tap Water
Sample Date:			10/29/2013	2/19/2014	5/7/2014	8/5/2014	11/14/2007
TCL Volatile Organic Compounds (8260B)	NYSDEC Standard	Type of Standard					
Acetone	50	POC	ND / 6	ND / 6	ND / 5	ND / 5	ND / 2.9
2-Butanone (MEK)	50	POC	ND / 3	ND / 3	ND / 5	ND / 5	ND / 2.7
1,1,1-Trichloroethane	5	POC	ND / 0.8	ND / 0.8	ND / 0.5	ND / 0.5	ND / 0.30
1,1-Dichloroethane	5	POC	ND / 1	ND / 1	ND / 0.5	ND / 0.5	ND / 0.20
1,2-Dichloroethane	0.6	GA Standard	ND / 0.5	ND / 0.5	ND / 0.5	ND / 0.5	ND / 0.29
cis-1,2-Dichloroethene	5	POC	ND / 0.8	ND / 0.8	ND / 0.5	ND / 0.5	ND / 0.27
1,1-Dichloroethene	5	POC	ND / 0.8	ND / 0.8	ND / 0.5	ND / 0.5	ND / 0.28
Methylene Chloride	5	POC	ND / 2	ND / 2	ND / 0.5	ND / 0.5	ND / 0.21
Tetrachloroethene	5	POC	ND / 0.8	ND / 0.8	ND / 0.5	ND / 0.5	ND / 0.28
Chloroform	7	GA Standard	ND / 0.8	ND / 0.8	ND / 0.5	ND / 0.5	36.8
Toluene	5	POC	ND / 0.7	ND / 0.7	ND / 0.5	ND / 0.5	ND / 0.21
Trichloroethene	5	POC	ND / 1	ND / 1	ND / 0.5	ND / 0.5	ND / 0.26
Bromodichloromethane	NAS (50)	Guidance Value	ND / 1	ND / 1	ND / 0.5	ND / 0.5	10.9
Dibromochloromethane	NAS (50)	Guidance Value	ND / 1	ND / 1	ND / 0.5	ND / 0.5	2.1
Isopropyl Alcohol (8015 DAI)							
Isopropyl Alcohol	NAS	--	NA	NA	NA	NA	ND / 25
Total Petroleum Hydrocarbons (8015)							
GRO (C6-C10)	NAS	--	NA	NA	NA	NA	ND / 33
DRO (C10-C28)	NAS	--	NA	NA	NA	NA	ND / 17
ORO (>C28-C40)	NAS	--	NA	NA	NA	NA	ND / 50

Notes:

- All results are expressed in units of micrograms per liter (µg/L)
- Samples from 2007 were collected by ERM and analyzed by Accutest Laboratories
- Samples from 2010-2014 were collected by The Johnson Company, and were analyzed by Lancaster Laboratories
- ND / ## = Compound not detected above laboratory Method Detection Limit (MDL) or Practical Quantitation Limit (PQL), limit provided
- Values in **BOLD** typeface indicate detections
- J = Value is estimated by the laboratory, JB = value is estimated by the laboratory, compound was detected in equipment blank sample
- POC = NYSDEC Classification "Principal Organic Contaminant" for groundwater
- GA Standard = NYSDEC GA (fresh groundwaters) Guidance Value. (NYSDEC Div. of Water: Part 703: Surface Water and Groundwater Quality Limitations.)
- Shaded results indicate an exceedance to the GA or POC standard; results outlined in bold are approximate and may exceed standard
- "NAS" = No applicable standard; Guidance Value shown in parentheses if available
- "NA" = Parameter was not analyzed
- Potable water sample was collected from the Facility tap and represents the public water supply to the Property

FIGURES



CONTOUR INTERVAL 10 FEET



QUADRANGLE LOCATION

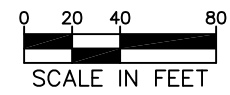
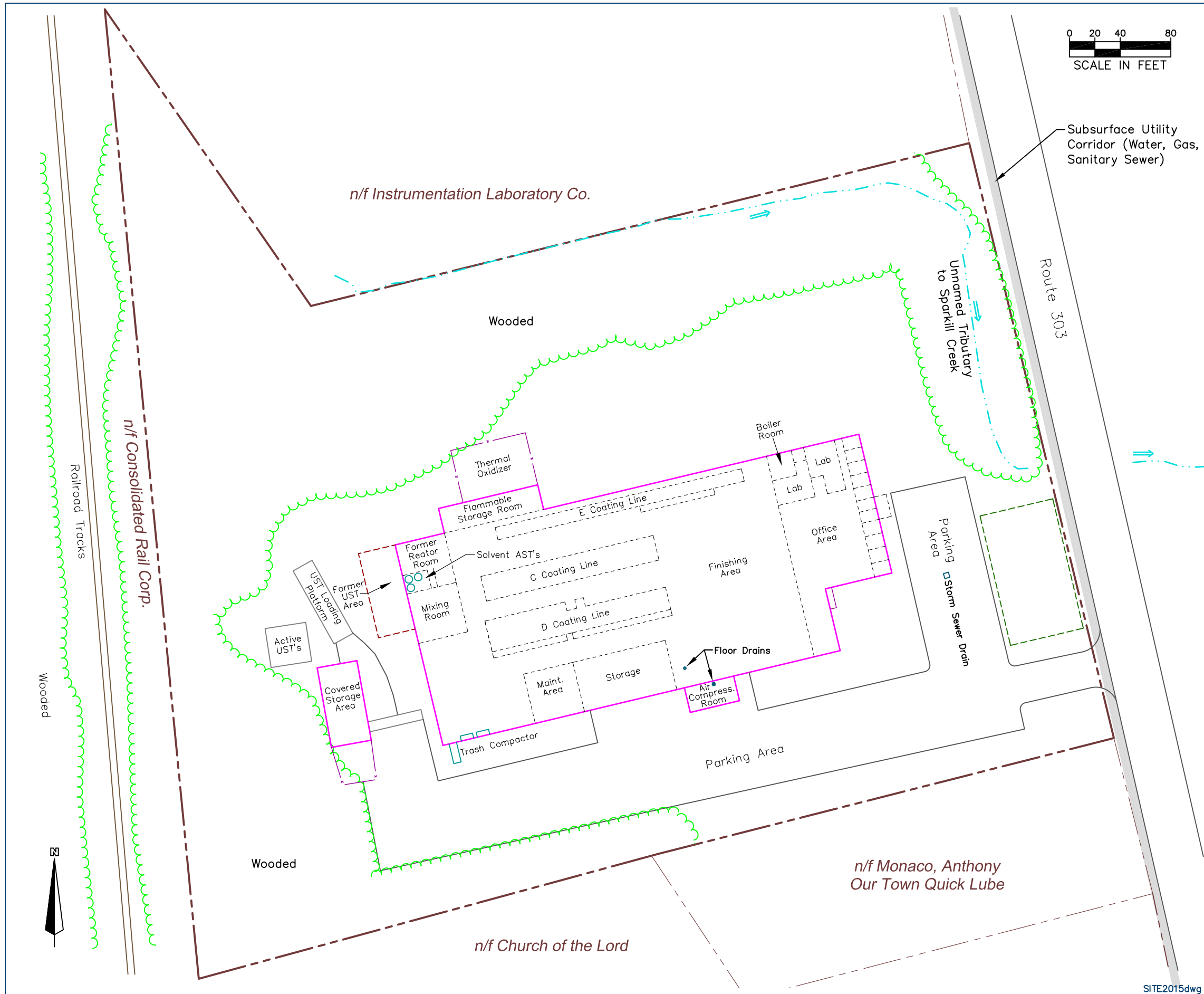
BASE MAP: USGS 7.5 Minute Topographic Quadrangle NYACK, NY-NJ

**FIGURE 1-1: PROPERTY LOCATION
FORMER PAXAR FACILITY
ORANGEBURG, NEW YORK**



100 State Street, Suite 600
Montpelier, VT 05602

Drawn by: TJK Date: 05/20/11
Reviewed by: CMT Date: 05/20/11
Scale: As Shown Project: 1-0145-15



- LEGEND**
- Property Line
 - Building Footprint
 - - - - - Approximate Building Interior Partition
 - x - x - Fenceline
 - - - - - Former Septic System Leach Field (Approximate)
 - - - - - Stream Location with Flow Direction
 - ~ ~ ~ ~ ~ Approximate Treeline

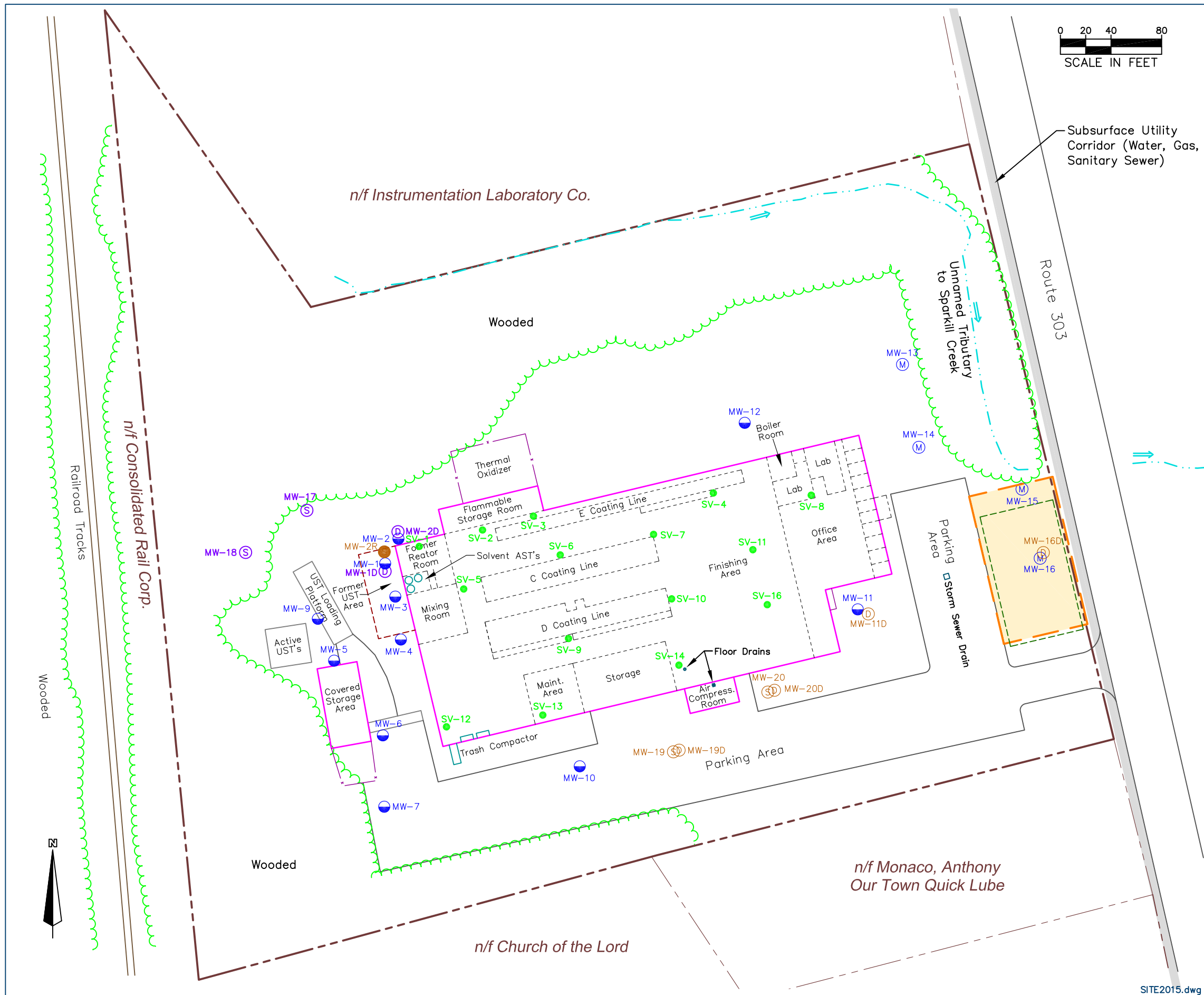
Note: All locations are approximate.

Sources:
 Town of Orangeburg 1992 tax maps.
 2007 aerial photography from New York State GIS Clearinghouse.
 Survey Plat by Tectonic Engineering & Surveying Consultants, P.C. dated 12/20/10.

Figure 2-1
Property Layout
Former PAXAR Facility
Orangeburg, New York

	100 State Street, Suite 600 Montpellier, VT 05602	
	Drawn by: TJK	Date: 04/07/15
	Reviewed by: CMT	Date: 04/07/15
Scale: 1" = 80'		Project: 1-0145-15

SITE2015dwg



LEGEND

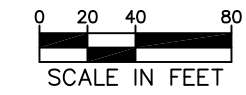
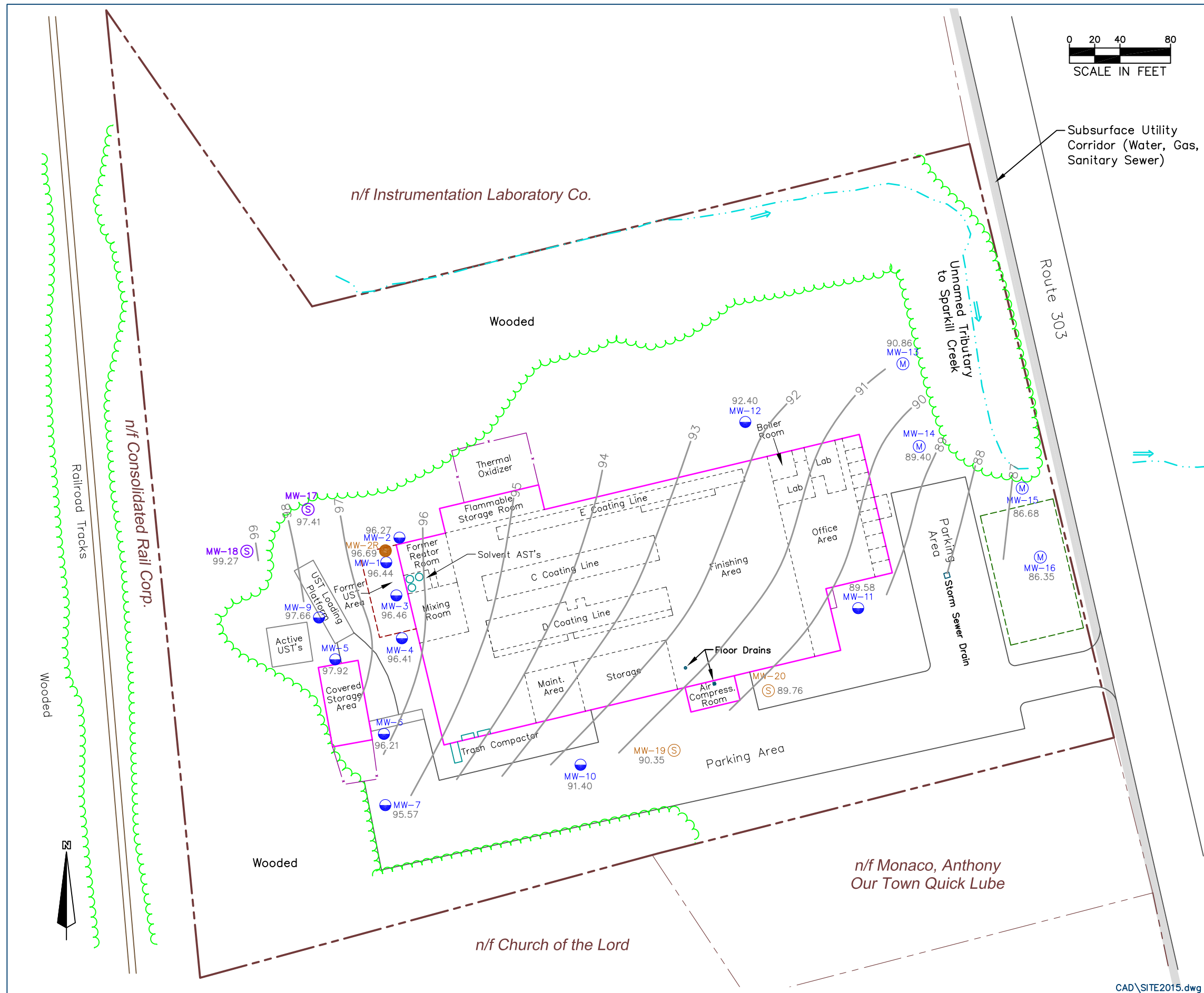
- Property Line
- Building Footprint
- - - - - Approximate Building Interior Partition
- x - x - Fenceline
- - - - - Stream Location
- - - - - Former Septic System Leach Field (Approximate)
- - - - - Approximate Septic System GPR Survey Area
- SV-7 Sub-Slab Soil Vapor Point Location
- MW-1 2007 ERM Soil Sampling Location and Shallow Unconsolidated Deposits Groundwater Monitoring Well
- MW-15 2010 JCO Shallow Unconsolidated Deposits Groundwater Monitoring Well Location
- MW-17 2012 JCO Shallow Unconsolidated Deposits Groundwater Monitoring Well Location
- MW-1D 2012 JCO Deep Unconsolidated Deposits Groundwater Monitoring Well Location
- MW-17 2013 JCO Shallow Unconsolidated Deposits Groundwater Monitoring Well Location
- MW-1D 2013 JCO Deep Unconsolidated Deposits Groundwater Monitoring Well Location
- MW-2R 2013 JCO Bedrock Groundwater Monitoring Well Location

Note: Well locations surveyed by Tectonic Engineering & Surveying Consultants, P.C. on 12/07/10, 02/21/12, and 11/05/13. All other locations are approximate.

Sources:
 Town of Orangeburg 1992 tax maps
 2007 aerial photography from New York State GIS Clearinghouse
 Survey Plat by Tectonic Engineering & Surveying Consultants, P.C. dated 12/20/10, revised 02/28/12.

Figure 4-1
Environmental Sampling Locations
Former PAXAR Facility
Orangeburg, New York

	100 State Street, Suite 600 Montpelier, VT 05602	
	Drawn by: TJK	Date: 04/07/15
	Reviewed by: CMT	Date: 04/07/15
Scale: As Shown	Project: 1-0145-15	



LEGEND

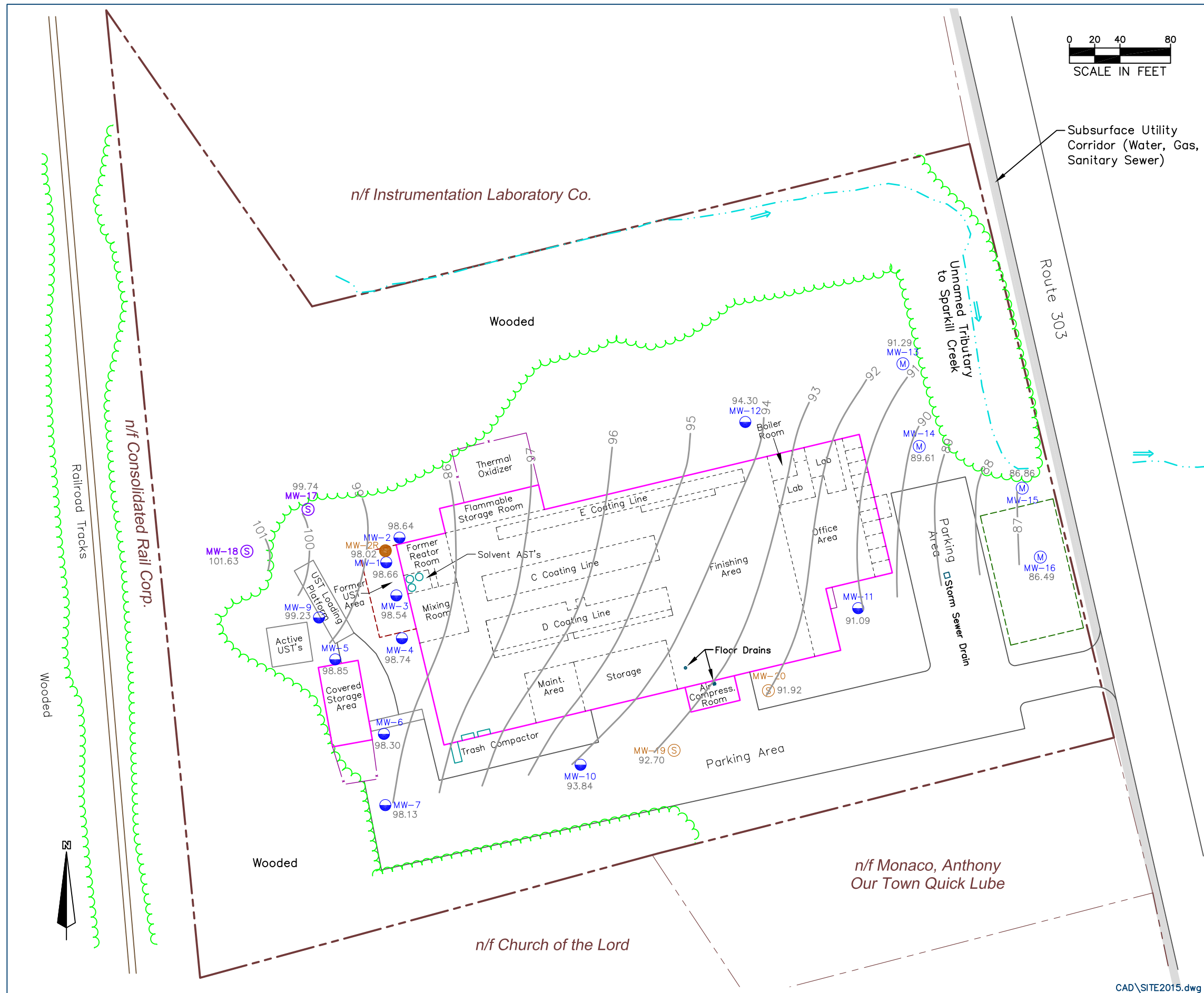
- Property Line
- Building Footprint
- - - - - Approximate Building Interior Partition
- x - x - Fenceline
- - - - - Stream Location
- ~ 1' Potentiometric Contour
- 90.86 Potentiometric Elev. (ft. AMSL) October 28, 2013
- MW-1 2007 ERM Soil Sampling Location and Shallow Unconsolidated Deposits Groundwater Monitoring Well
- MW-15 2010 JCO Shallow Unconsolidated Deposits Groundwater Monitoring Well Location
- MW-17 2012 JCO Shallow Unconsolidated Deposits Groundwater Monitoring Well Location
- MW-1D 2012 JCO Deep Unconsolidated Deposits Groundwater Monitoring Well Location
- MW-17 2013 JCO Shallow Unconsolidated Deposits Groundwater Monitoring Well Location
- MW-1D 2013 JCO Deep Unconsolidated Deposits Groundwater Monitoring Well Location
- MW-2R 2013 JCO Bedrock Groundwater Monitoring Well Location

Note: Well locations surveyed by Tectonic Engineering & Surveying Consultants, P.C. on 12/07/10, 02/21/12, and 11/05/13. All other locations are approximate.

Sources:
 Town of Orangeburg 1992 tax maps.
 2007 aerial photography from New York State GIS Clearinghouse.
 Survey Plat by Tectonic Engineering & Surveying Consultants, P.C. dated 12/20/10, revised 11/05/13.

Figure 5-3: Water Table Potentiometric Contour Plan - October 2013
Former PAXAR Facility
Orangeburg, New York

	100 State Street, Suite 600 Montpelier, VT 05602	
	Drawn by: TJK	Date: 04/07/15
	Reviewed by: CMT	Date: 04/07/15
Scale: 1" = 80'		Project: 1-0145-15



- LEGEND**
- Property Line
 - Building Footprint
 - - - - - Approximate Building Interior Partition
 - x - x - Fenceline
 - · - · - Stream Location
 - 1' Potentiometric Contour
 - Potentiometric Elev. (ft. AMSL) February 10, 2014

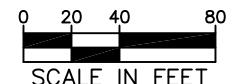
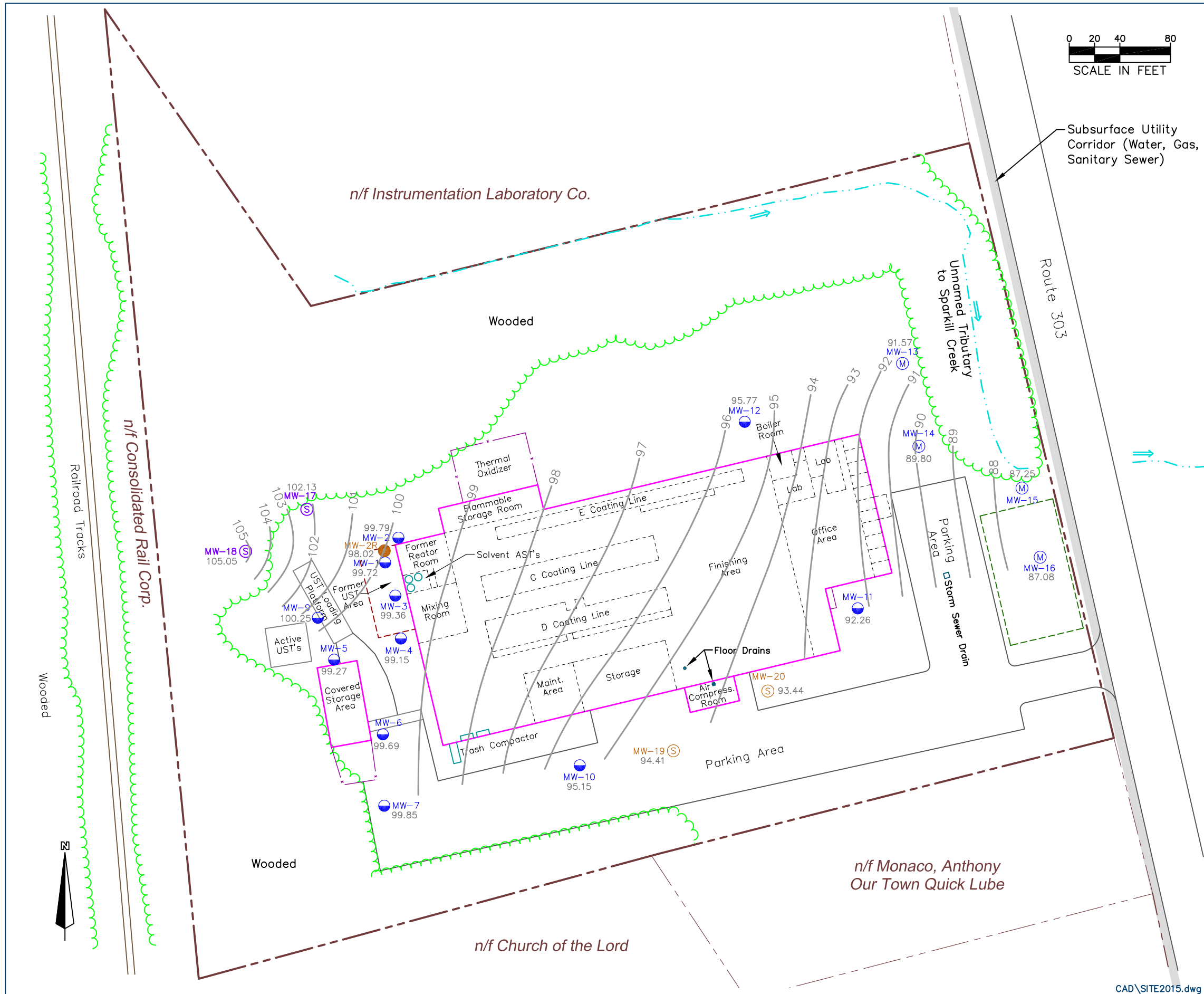
- MW-1 2007 ERM Soil Sampling Location and Shallow Unconsolidated Deposits Groundwater Monitoring Well
- MW-15 2010 JCO Shallow Unconsolidated Deposits Groundwater Monitoring Well Location
- MW-17 2012 JCO Shallow Unconsolidated Deposits Groundwater Monitoring Well Location
- MW-1D 2012 JCO Deep Unconsolidated Deposits Groundwater Monitoring Well Location
- MW-17 2013 JCO Shallow Unconsolidated Deposits Groundwater Monitoring Well Location
- MW-1D 2013 JCO Deep Unconsolidated Deposits Groundwater Monitoring Well Location
- MW-2R 2013 JCO Bedrock Groundwater Monitoring Well Location

Note: Well locations surveyed by Tectonic Engineering & Surveying Consultants, P.C. on 12/07/10, 02/21/12, and 11/05/13. All other locations are approximate.

Sources:
 Town of Orangeburg 1992 tax maps.
 2007 aerial photography from New York State GIS Clearinghouse.
 Survey Plat by Tectonic Engineering & Surveying Consultants, P.C. dated 12/20/10, revised 11/05/13.

Figure 5-4: Water Table Potentiometric Contour Plan - February 2014
Former PAXAR Facility
Orangeburg, New York

	100 State Street, Suite 600 Montpelier, VT 05602	
	Drawn by: TJK	Date: 04/07/15
	Reviewed by: CMT	Date: 04/07/15
Scale: 1" = 80'		Project: 1-0145-15



- LEGEND**
- Property Line
 - Building Footprint
 - - - - - Approximate Building Interior Partition
 - x - x - Fenceline
 - · - · - Stream Location
 - ~ 1' Potentiometric Contour
 - 87.08 Potentiometric Elev. (ft. AMSL) May 05, 2014

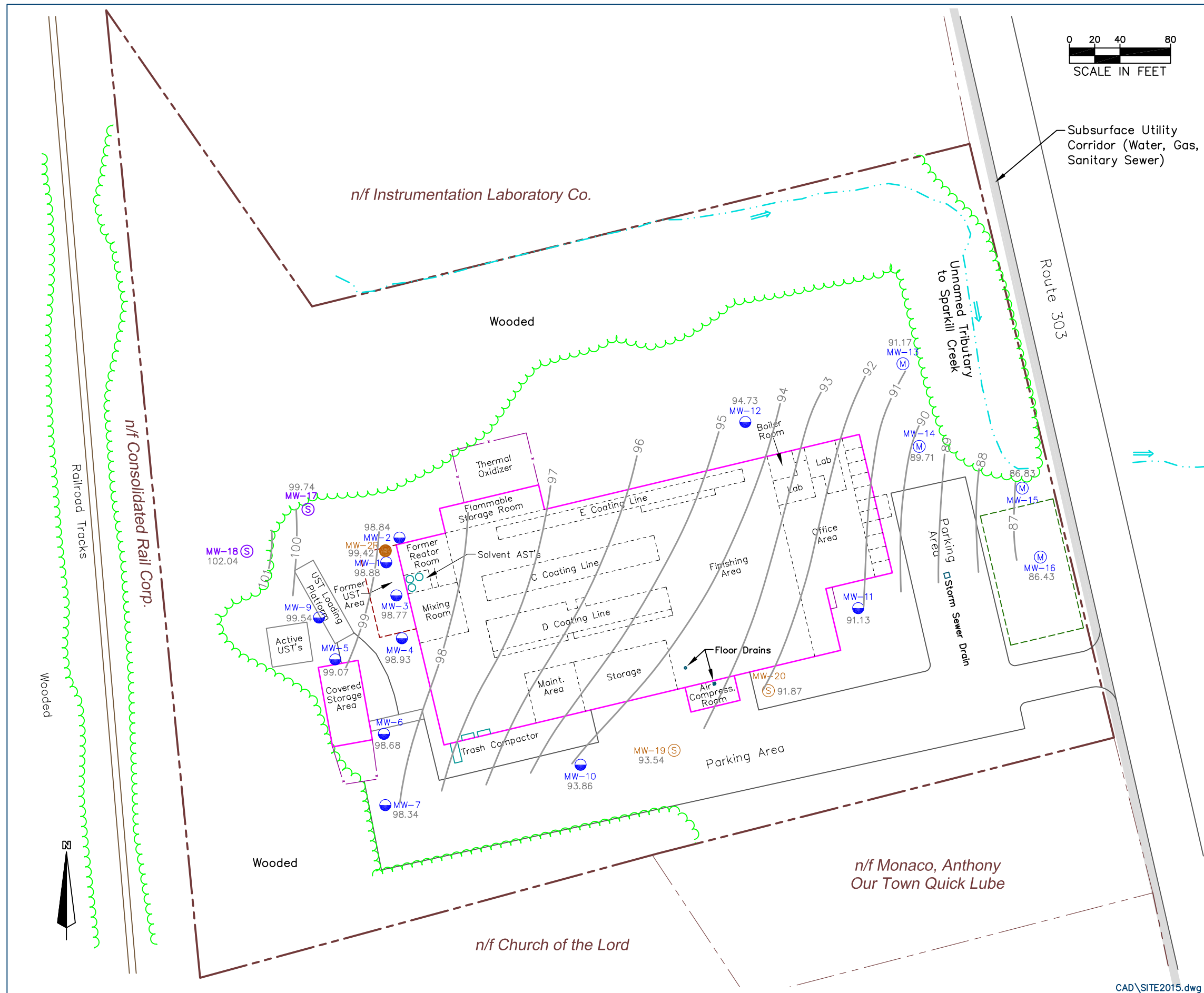
- MW-1 2007 ERM Soil Sampling Location and Shallow Unconsolidated Deposits Groundwater Monitoring Well
- MW-15 2010 JCO Shallow Unconsolidated Deposits Groundwater Monitoring Well Location
- MW-17 2012 JCO Shallow Unconsolidated Deposits Groundwater Monitoring Well Location
- MW-1D 2012 JCO Deep Unconsolidated Deposits Groundwater Monitoring Well Location
- MW-17 2013 JCO Shallow Unconsolidated Deposits Groundwater Monitoring Well Location
- MW-1D 2013 JCO Deep Unconsolidated Deposits Groundwater Monitoring Well Location
- MW-2R 2013 JCO Bedrock Groundwater Monitoring Well Location

Note: Well locations surveyed by Tectonic Engineering & Surveying Consultants, P.C. on 12/07/10, 02/21/12, and 11/05/13. All other locations are approximate.

Sources:
 Town of Orangeburg 1992 tax maps.
 2007 aerial photography from New York State GIS Clearinghouse.
 Survey Plat by Tectonic Engineering & Surveying Consultants, P.C. dated 12/20/10, revised 11/05/13.

Figure 5-5: Water Table Potentiometric Contour Plan - May 2014
Former PAXAR Facility
Orangeburg, New York

	100 State Street, Suite 600 Montpelier, VT 05602	
	Drawn by: TJK	Date: 04/07/15
	Reviewed by: CMT	Date: 04/07/15
Scale: 1" = 80'		Project: 1-0145-15



LEGEND

- Property Line
- Building Footprint
- - - - - Approximate Building Interior Partition
- x - x - Fenceline
- · - · - Stream Location
- 1' Potentiometric Contour
- 86.43 Potentiometric Elev. (ft. AMSL) August 4, 2014
- MW-1 2007 ERM Soil Sampling Location and Shallow Unconsolidated Deposits Groundwater Monitoring Well
- MW-15 2010 JCO Shallow Unconsolidated Deposits Groundwater Monitoring Well Location
- MW-17 2012 JCO Shallow Unconsolidated Deposits Groundwater Monitoring Well Location
- MW-1D 2012 JCO Deep Unconsolidated Deposits Groundwater Monitoring Well Location
- MW-17 2013 JCO Shallow Unconsolidated Deposits Groundwater Monitoring Well Location
- MW-1D 2013 JCO Deep Unconsolidated Deposits Groundwater Monitoring Well Location
- MW-2R 2013 JCO Bedrock Groundwater Monitoring Well Location

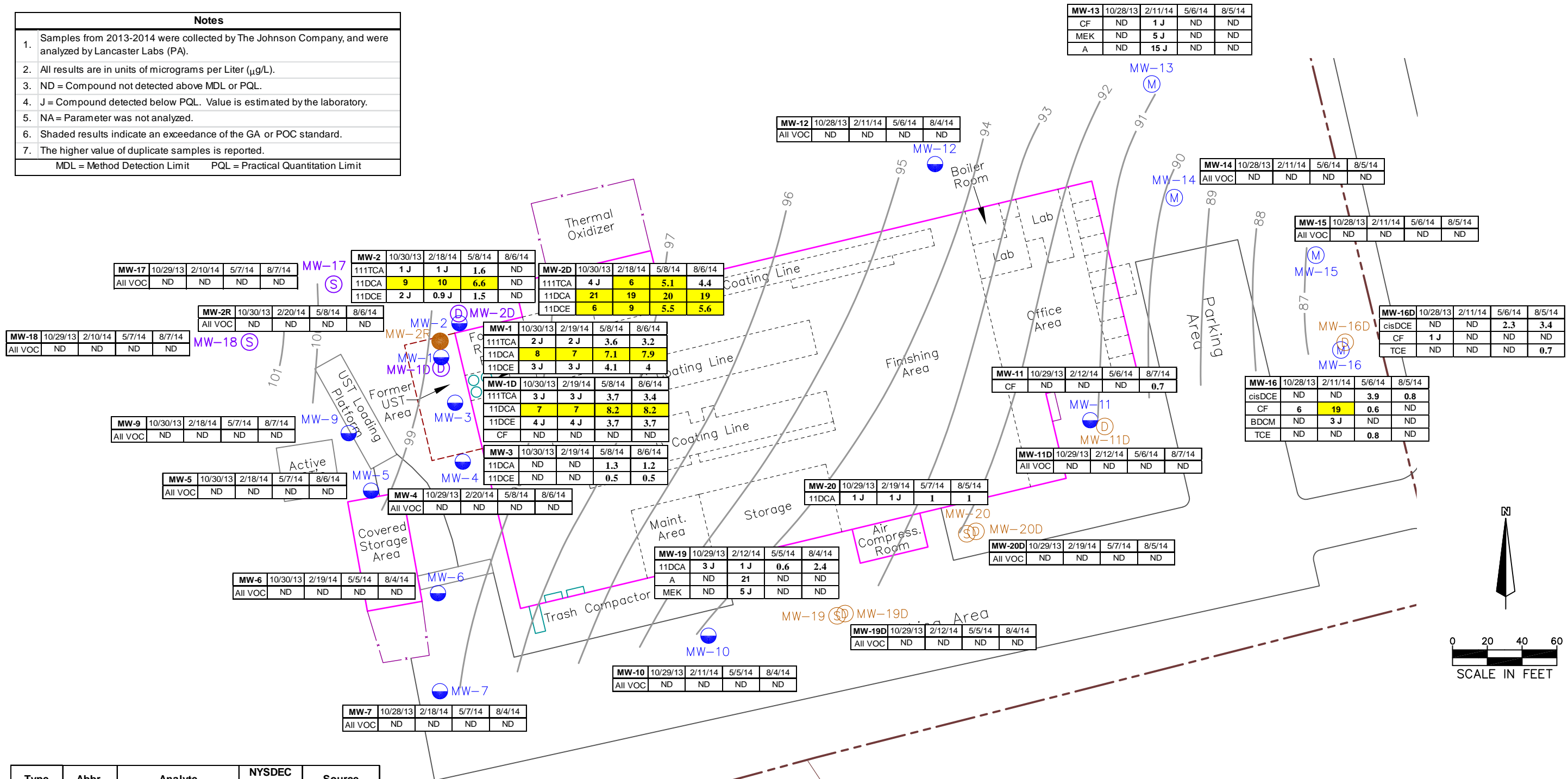
Note: Well locations surveyed by Tectonic Engineering & Surveying Consultants, P.C. on 12/07/10, 02/21/12, and 11/05/13. All other locations are approximate.

Sources:
 Town of Orangeburg 1992 tax maps.
 2007 aerial photography from New York State GIS Clearinghouse.
 Survey Plat by Tectonic Engineering & Surveying Consultants, P.C. dated 12/20/10, revised 11/05/13.

Figure 5-6: Water Table Potentiometric Contour Plan - August 2014
Former PAXAR Facility
Orangeburg, New York

	100 State Street, Suite 600 Montpelier, VT 05602	
	Drawn by: TJK	Date: 04/07/15
	Reviewed by: CMT	Date: 04/07/15
Scale: 1" = 80'		Project: 1-0145-15

Notes	
1.	Samples from 2013-2014 were collected by The Johnson Company, and were analyzed by Lancaster Labs (PA).
2.	All results are in units of micrograms per Liter ($\mu\text{g/L}$).
3.	ND = Compound not detected above MDL or PQL.
4.	J = Compound detected below PQL. Value is estimated by the laboratory.
5.	NA = Parameter was not analyzed.
6.	Shaded results indicate an exceedance of the GA or POC standard.
7.	The higher value of duplicate samples is reported.
MDL = Method Detection Limit PQL = Practical Quantitation Limit	



Type	Abbr.	Analyte	NYSDEC Standard	Source
VOC	111TCA	1,1,1-Trichloroethane	5	POC
	11DCA	1,1-Dichloroethane	5	POC
	11DCE	1,1-Dichloroethene	5	POC
	cisDCE	cis-1,2-Dichloroethene	5	POC
	TCE	Trichloroethene	5	POC
	CF	Chloroform	7	GA Standard
	MEK	2-Butanone (MEK)	50	POC
	A	Acetone	50	POC
	BDCM	Bromodichloromethane		NAS

POC = NYSDEC Classification "Principal Organic Contaminant" for groundwater.
 GA Standard = NYSDEC GA (fresh groundwaters) Guidance Value.
 "NAS" = No applicable standard

LEGEND

- (M) (S) Shallow Unconsolidated Deposits Groundwater Monitoring Well Location
- (D) Deeper Unconsolidated Deposits Groundwater Monitoring Well Location
- (B) Bedrock Groundwater Monitoring Well Location
- — — — — Property Line
- — — — — Building Footprint
- - - - - Approximate Building Interior Partition
- x - x - Fenceline
- ~ ~ ~ ~ ~ 1' Potentiometric Contour

August 4, 2014

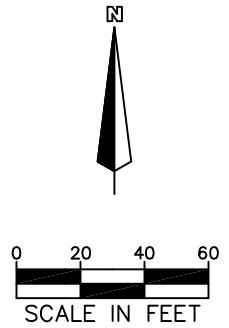


Figure 5-9
Groundwater Analytical Results (2013 - 2014)
Former PAXAR Facility
Orangeburg, New York

100 State Street, Suite 600
 Montpelier, VT 05602

Drawn by: TJK Date: 04/06/15
 Reviewed by: CMT Date: 04/07/15
 Scale: 1" = 80' Project: 1-0145-15

The Johnson Company