

(Fact Sheet Begins Next)

## Act Now to Continue Receiving Information About This Site!

DEC's Division of Environmental Remediation (DER) now distributes information about contaminated sites *electronically by email*.

If you would like to continue to receive information about the contaminated site featured in this fact sheet:

**You must sign up for the DER email listserv:**

[www.dec.ny.gov/chemical/61092.html](http://www.dec.ny.gov/chemical/61092.html)

DER cannot register your email address - only the email address owner can do so. If you already have signed up for the listserv for the county in which the site is located, you need do nothing.



### Why You Should Go “Paperless”:

- ☒ Get site information faster and share it easily;
- ☒ Receive information about all sites in a chosen county - read what you want, delete the rest;
- ☒ It helps the environment and stretches your tax dollars.

**If “paperless” is not an option for you**, call or write to the DER project manager identified in this fact sheet. Indicate that you need to receive paper copies of fact sheets through the Postal Service. Include the site name in your correspondence. The option to receive paper is available to individuals only. Groups, organizations, businesses, and government entities are assumed to have email access.



Department of  
Environmental  
Conservation

## FACT SHEET

### State Superfund Program

Danzig Groundwater Plume  
Oak Tree Road  
Tappan, NY

**SITE No. 344082**  
**NYSDEC REGION 3**

**January 2020**

### Where to Find Information

Access project documents through the DECinfo Locator and at these location(s):

**Tappan Free Library**  
93 Main St  
Tappan, NY 10983  
(845) 359-3877

### Who to Contact

Comments and questions are welcome and should be directed as follows:

**Project-Related Questions**  
Michael Kilmer, Project Manager  
NYSDEC  
21 S. Putt Corners Rd  
New Paltz, NY 12561  
(845) 633-5463  
[michael.kilmer@dec.ny.gov](mailto:michael.kilmer@dec.ny.gov)

**Project-Related Health Questions**  
Wendy Kuehner  
NYSDOH  
Bureau of Environmental  
Exposure Investigation  
Empire State Plaza  
Corning Tower - Room 1787  
Albany, NY 12237  
(518) 402-7860  
[bee@health.ny.gov](mailto:bee@health.ny.gov)

For more information about New York's  
State Superfund Program, visit:  
[www.dec.ny.gov/chemical/8439.html](http://www.dec.ny.gov/chemical/8439.html)

### Investigation to Begin at State Superfund Site

The NYS Department of Environmental Conservation (NYSDEC) will soon begin a preliminary environmental study at the Danzig Groundwater Plume site ("site") located between Oak Tree Road and the New Jersey border, in the Hamlet of Tappan, Town of Orangetown, Rockland County. The New Jersey Department of Environmental Protection (NJDEP) recently conducted an investigation at the Danzig Flooring Machine Company site across the state border in New Jersey. The investigation determined that chlorinated solvent contamination in the groundwater has the potential to migrate north into New York. Therefore, NYSDEC will investigate the extent of contamination that has migrated into New York from New Jersey. Please see the maps for the site location and the study area.

**Site Characterization:** The NYSDEC will conduct a Site Characterization for the Danzig Groundwater Plume site under New York's State Superfund Program. The site is currently listed as a Class "P" site. A Class P (potential) classification is used for sites where preliminary information indicates that a site may have contamination that makes it eligible for consideration for placement on the Registry of Inactive Hazardous Waste Disposal Sites (commonly referred to as the list of State Superfund Sites). Further information and/or investigation, in the form of a Site Characterization, is needed to determine if the site qualifies for listing on the Registry. NYSDEC and the New York State Department of Health (NYSDOH) will oversee the investigation.

- Access project documents online through the DECinfo Locator: <https://www.dec.ny.gov/data/DecDocs/344082/>.
- Documents also are available at the location(s) identified at left under "Where to Find Information."

**Highlights of the Site Characterization:** The Site Characterization is the preliminary investigation phase to determine, in this case, whether there is groundwater contamination coming from New Jersey into New York State, and inform whether further investigation is warranted.

Tetrachloroethene (PCE) and its byproducts may be present in the site's subsurface. PCE is a contaminant often associated with dry cleaning operations and in the manufacture of metal parts. PCE and its byproducts

# STATE SUPERFUND PROGRAM

are volatile organic compounds which means the contamination in the groundwater can volatilize into a gas and cause vapor intrusion issues

Key components of the investigation work include:

- Collecting soil vapor, sub-slab soil vapor and indoor air samples of structures within the study area. DEC will be reaching out to individual property owners to arrange access to perform this sampling. Should any structures be identified as requiring mitigation, DEC will arrange for mitigation systems, such as a sub-slab depressurization system (similar to a radon mitigation system) to be installed.
- Installing and sampling groundwater wells to help define the extent of the plume that has migrated into New York.
- Sampling the Sparkill Creek to determine any impacts from groundwater recharge.

**Next Steps:** The information collected during the site characterization will be summarized in a report. After the site characterization has finished, NYSDEC and NYSDOH will make a significant threat determination. The site may then be added to the State Registry of Inactive Hazardous Waste Disposal Sites.

**Site Description:** The site study area comprises approximately 43-acres and is bordered on the west by Livingston Street, on the south by the New York/New Jersey border, on the north by Oak Tree Road, and on the east by the Joseph B. Clarke Rail Trail. It includes a mix of single-family residences and commercial businesses. Sparkill Creek is in close proximity to the southern border of the study area.

Additional site details, including environmental and health assessment summaries, are available on NYSDEC's Environmental Site Remediation Database (by entering the site ID, 344082) at:

<http://www.dec.ny.gov/cfm/xtapps/derexternal/index.cfm?pageid=3>

**State Superfund Program:** New York's State Superfund Program (SSF) identifies and characterizes suspected inactive hazardous waste disposal sites. Sites that pose a significant threat to public health and/or the environment go through a process of investigation, evaluation, cleanup and monitoring.

NYSDEC attempts to identify parties responsible for site contamination and require cleanup before committing State funds.

For more information about the SSF, visit:

<http://www.dec.ny.gov/chemical/8439.html>

---

***We encourage you to share this fact sheet with neighbors and tenants, and/or post this fact sheet in a prominent area of your building for others to see.***

---

## Stay Informed With DEC Delivers

Sign up to receive site updates by email:

[www.dec.ny.gov/chemical/61092.html](http://www.dec.ny.gov/chemical/61092.html)

Note: Please disregard if you already have signed up and received this fact sheet electronically.

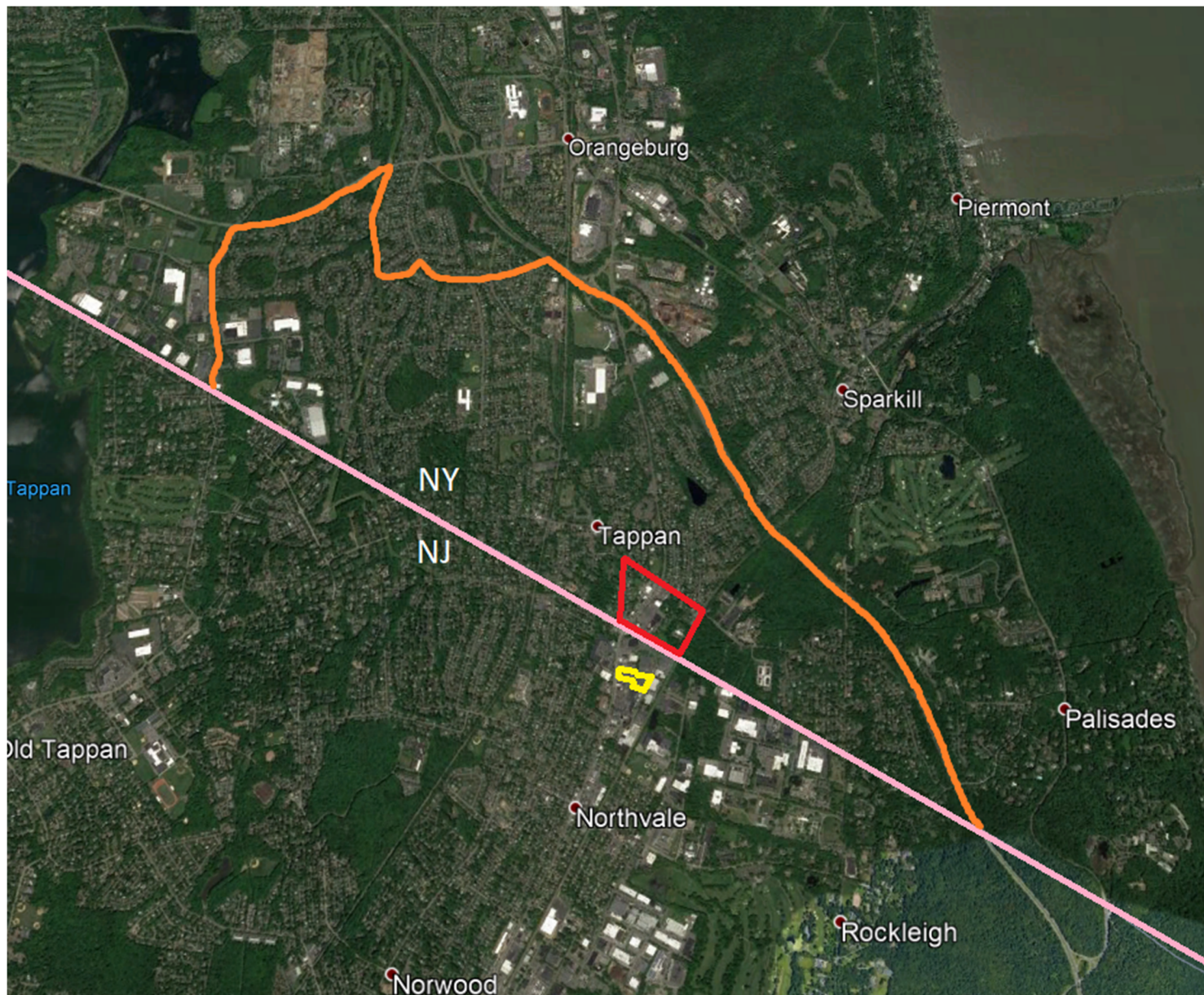
## DECInfo Locator

Interactive map to access DEC documents and public data about the environmental quality of specific sites: <http://www.dec.ny.gov/pubs/109457.html>



# STATE SUPERFUND PROGRAM

## Site map (Study Area)



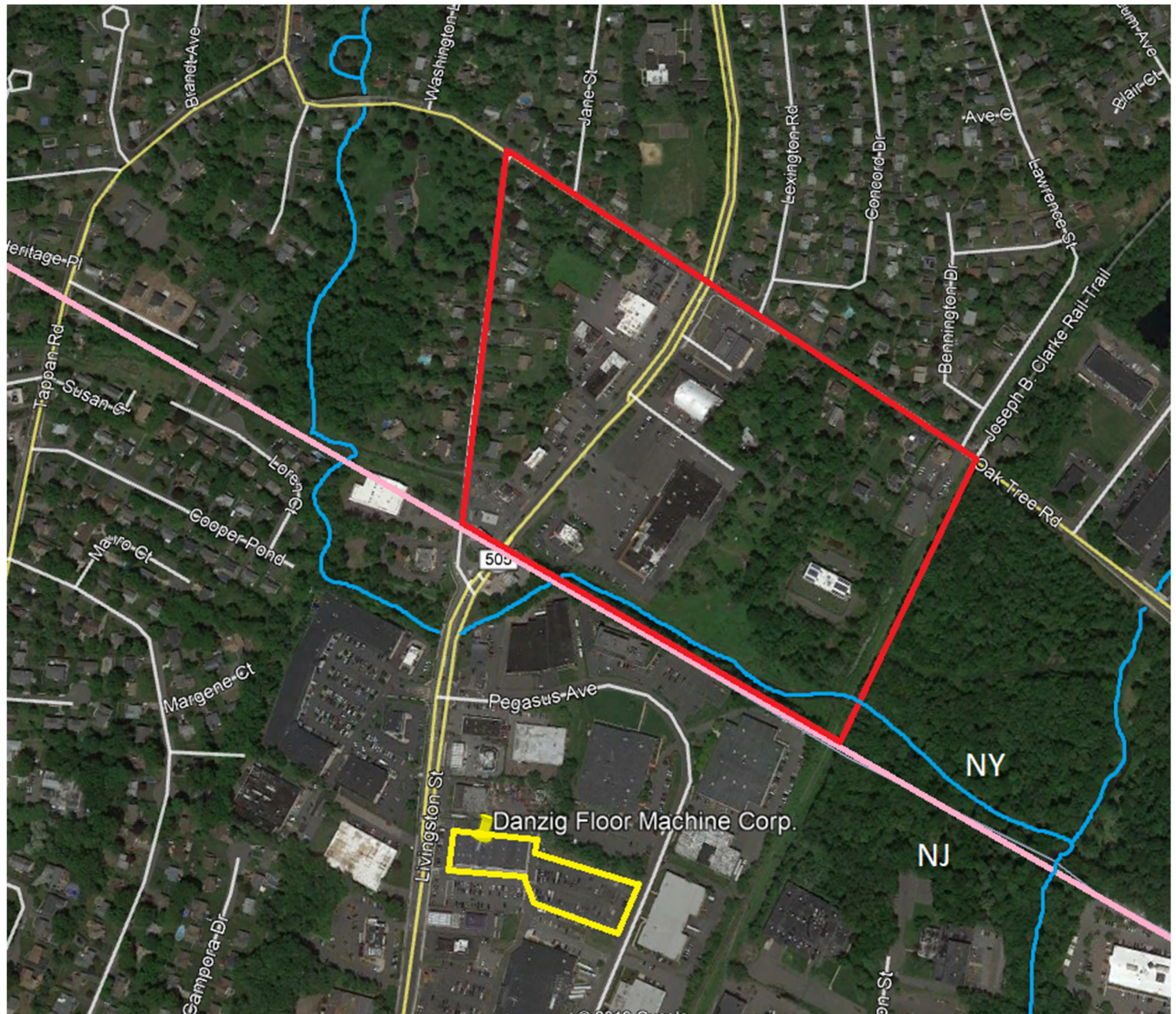
### Legend:

- Contaminant Source Property
- NYS Study Area
- Hamlet of Tappan Border
- State Line



# STATE SUPERFUND PROGRAM

## Areal Overview of Study Area



### Legend:

- Contaminant Source Property
- NYS Study Area
- State Line
- Sparkill Creek



# STATE SUPERFUND PROGRAM

## NYS Study Area

