

DURACELL, INC.
NORTH TARRYTOWN, NEW YORK

HAZARDOUS WASTE
STORAGE FACILITY
CLOSURE PLAN

CONFIDENTIAL

PROJECT #425-1
OCTOBER 1985

EDER ASSOCIATES CONSULTING ENGINEERS, P.C.
85 Forest Avenue
Locust Valley, New York 11560



eder associates
consulting engineers, p.c.

October 28, 1985
File #425-1

Mr. John Middelkoop
Supervisor of Permit Section
Bureau of Hazardous Waste Technology
New York State Department of
Environmental Conservation
50 Wolf Road, Room 401
Albany, New York 12233

Dear Mr. Middelkoop:

Enclosed is the amended closure plan for the Duracell hazardous waste storage facility located in North Tarrytown, New York. Duracell plans to begin closure activities on May 1, 1986.

This report is furnished pursuant to the departmental request made under Environmental Conservation Law (ECL), #27-1307, and is confidential within the legal understanding of that term and specifically in accordance with ECC #27-1311.

Very truly yours,

EDER ASSOCIATES CONSULTING ENGINEERS, P.C.

Gary A. Rozmus, P.E.
GAR/mw

cc: J. Reidy

85 FOREST AVENUE • LOCUST VALLEY, NEW YORK 11560 • (516) 671-8440

LEONARD J. EDER, P. E. • FREDERICK H. INYARD, P. E. • STEPHEN J. OSMUNDSEN, P. E. • GARY A. ROZMUS, P. E.
JOHN N. MCGUIRE, P. E. • JORGE MOLINA, ING. • WILLIAM J. CUNNINGHAM, P. E. • JOSEPH B. HELLMANN, P. E.

TABLE OF CONTENTS

	<u>Page</u>
LETTER OF TRANSMITTAL	
I. FACILITY CONDITIONS	1
- Introduction	1
- Plant Description	1
- Hazardous Waste Generation	4
- Hazardous Waste Storage Facility	6
- Hazardous Waste Handling and Disposal	6
- Schedule of Closure	7
II. FUTURE HAZARDOUS WASTE GENERATION AND REMOVAL	9
III. INVENTORY REMOVAL AND FACILITY DECONTAMINATION	11
IV. CLOSURE CERTIFICATION	12
APPENDIX	

LIST OF TABLES

<u>No.</u>	<u>Description</u>	<u>Page</u>
1	Summary of Hazardous Waste Types and Quantities	5

LIST OF FIGURES

1	Location Map	3
2	Closure Plan	8

LIST OF DRAWINGS

1	Plot Plan
---	-----------

I. FACILITY CONDITIONS

Introduction

Duracell, Inc., EPA ID NY D000692913, (Duracell) owns and operates a battery manufacturing plant located at 60 Elm Street, North Tarrytown, New York. Duracell generates hazardous wastes which are stored in an on-site hazardous waste storage facility in excess of 90 days prior to shipment off-site. The storage facility consists of two storage rooms and a concrete pad located outside the plant building. In compliance with the requirements of Environmental Protection Agency (EPA) Regulations for Federally Administered Hazardous Waste Permit Programs (40 CFR 270), Duracell had filed a Part A permit application for the storage facility for hazardous wastes on August 12, 1980. A copy of the application is included in Appendix A.

The New York State Department of Environmental Conservation (DEC) "Interim Status Standards for Owners and Operators of Hazardous Waste Facilities", 6 NYCRR Subpart 373-3, requires that Duracell maintain a closure plan for the hazardous waste storage facility. The plan must be amended whenever there are changes affecting closure. Duracell prepared an initial closure plan on May 4, 1981. The plan was modified on September 27, 1983 to reflect changes in the types of hazardous wastes generated. A copy of the most recent closure plan is presented in Appendix A. These plans have been reviewed by DEC representatives during their past site inspections to evaluate compliance with hazardous waste management regulations.

The amended closure plan of September 27, 1983 reflects the closure of a storage facility receiving hazardous wastes resulting from battery manufacturing. The previously anticipated closure date was March, 2031.

Duracell had moved its manufacturing operations to another site and untook an evaluation of the plant to identify feasible future uses including establishing alternative manufacturing operations, other corporate uses and divestiture of the property. In October 1985, Duracell concluded that the hazardous waste storage facility would be closed, the building would be demolished and the land would be placed on the market for sale. Closure of the hazardous waste storage facility is scheduled to commence on May 1, 1986.

These decisions require an amendment to the existing closure plan because of the anticipated change in types of hazardous wastes to be generated and date of closure. The building will be cleaned in preparation for demolition. Cleaning will result in the generation of wastes which differ both in quantity and characteristics from those generated by prior manufacturing activities.

The amended plan could not be prepared until Duracell reached a decision concerning future use of the plant. The various future use options would affect both the nature of wastes to be generated and anticipated closure date.

Eder Associates Consulting Engineers, P.C. (EA) was retained to prepare the amended closure plan. This report presents the amended plan.

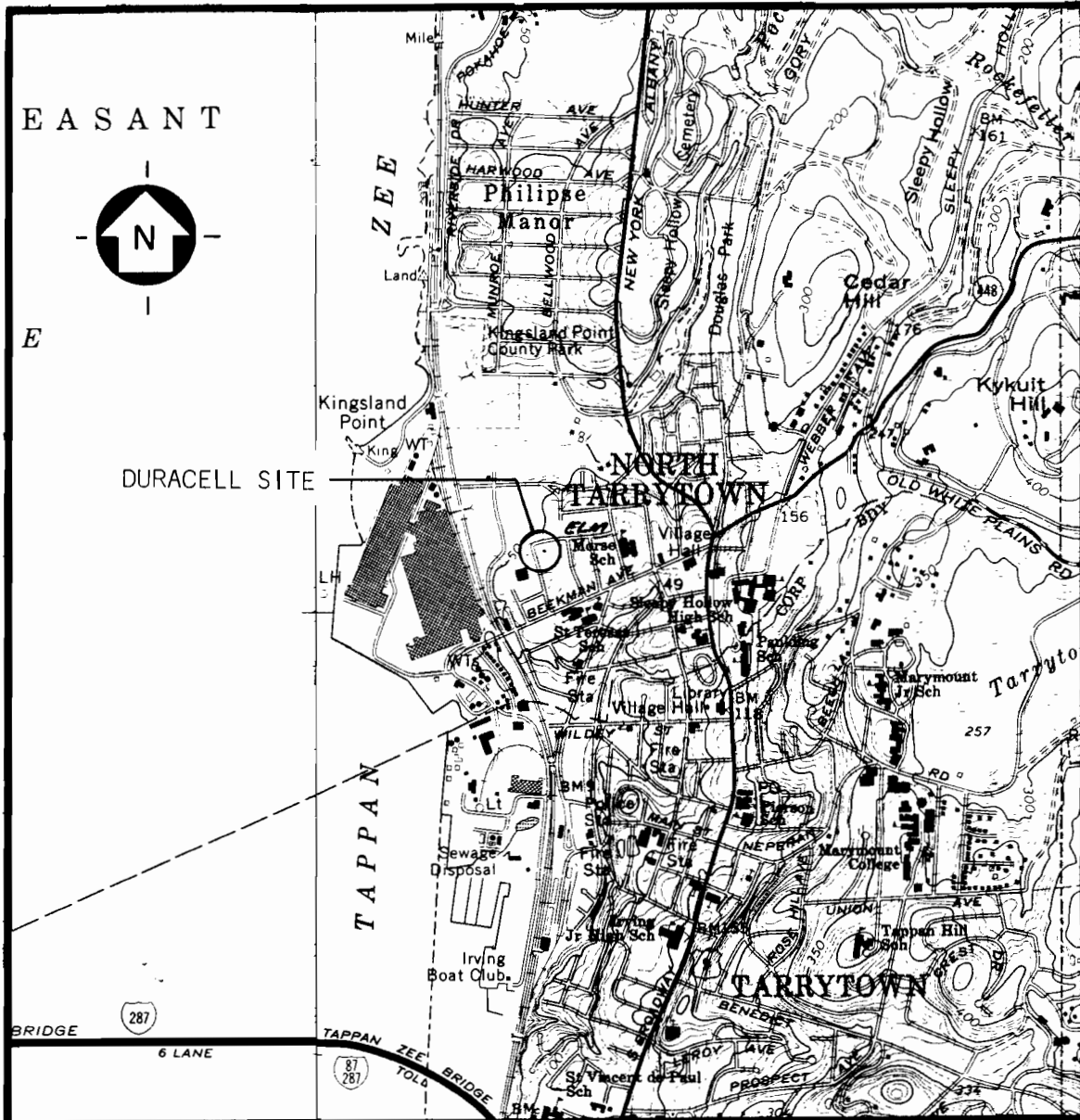
Plant Description

A location map is presented in Figure 1 and a Plot Plan is presented in Drawing 1, following Section IV. The plant includes two parcels of property located at the intersection of Elm Street and Andrews Lane. The plant building is located on the 1.6 acre parcel east of Andrews Lane and south of Elm Street. Duracell also owns the paved one acre parking lot west of Andrews Lane.

The hazardous waste storage facility is located in the southeast yard area (see Drawing 1). The facility consists of two storage rooms

FIGURE 1

DURACELL INTERNATIONAL, INC.
NORTH TARRYTOWN, NEW YORK



Scale 1" = 2400"

LOCATION MAP

and an outside concrete pad. The yard area is generally paved. A driveway along the south property line provides access from Andrews Lane to the yard area.

Lithium batteries have been produced at the plant since the mid-1970's. In addition, battery testing, research and development are performed in the laboratory and test rooms of the plant.

Hazardous wastes generated by battery manufacturing includes:

- off specification raw materials, intermediate products and batteries;
- waste solutions from battery washing and equipment cleaning; and
- spent lubricating oils.

Production operations are enclosed posing limited opportunities for spillage to occur. Waste materials are collected at the point of generation into 55 gallon drums.

Miscellaneous wastes include small quantities of various solvents used for cleaning, and chemicals used in testing, research and development. These wastes, generally collected in small containers, are grouped according to compatibility and transferred into laboratory chemical overpacks.

Hazardous Waste Generation

Table 1 lists the hazardous waste types and annual quantities for the period 1982 through August, 1985. Copies of the Generator/Waste Transporter Annual Reports and manifests for 1985 are presented in Appendix A.

DURACELL, INC.
NORTH TARRYTOWN, NEW YORK

TABLE 1

SUMMARY OF HAZARDOUS WASTE TYPES AND QUANTITIES

<u>Year</u>	<u>Lithium Batteries</u>	<u>Lithium Metal</u>	<u>Waste Alcohol(2)</u>	<u>Lithium-SO₂ Electrolyte(3)</u>	<u>Waste Solvent(4)</u>	<u>Freon(5)</u>	<u>Alkaline Solution</u>	<u>Oil(6)</u>	<u>Laboratory Wastes</u>
1982	13,472.	---	---	1,150.	11,700.	23,400.	6,600	--	3,000.
1983	9,492.	60.	---	---	11,616.	1,870.	1,374	--	1,210.
1984	20,000.	---	18,000.	3,000.	12,400.	35,000.	---	9,600.	1,400.
1985(1)	<u>12,104.</u>	<u>233.</u>	<u>825</u>	<u>1,840.</u>	<u>800.</u>	<u>2,063</u>	<u>2,874</u>	<u>4,125.</u>	<u>2,450.</u>
TOTAL	55,068.	293.	18,825.	5,990.	36,516.	62,333	10,848	13,725.	8,060.

Note: All units are pounds

- (1) Through August, 1985
- (2) Propanol and water, 7.5 lbs/gal
- (3) Acetonitrile 6.3 lbs/gal
- (4) Stoddard solvent 6.6 lbs/gal
- (5) Trichlorofluoromethane, 12.5 lbs/gal
- (6) Waste oil 7.5 lbs/gal

The annual average quantity of hazardous waste was approximately 58,000 pounds or 4,800 pounds (2,200 kilograms) per month.

Hazardous Waste Storage Facility

The hazardous waste storage facility consists of two rooms constructed in the southeast yard area. The rooms are 18 feet long and six and 11 feet wide, respectively. They have a storage capacity for about 30 drums allowing a three foot corridor to facilitate handling.

The rooms are constructed of concrete block on a poured concrete pad. Electric wiring is explosion proof. A fan and louver vent in the door provides ventilation. Additional storage can be provided, if necessary, on the 600 square foot concrete pad at the entrance to the storage rooms. Total storage capacity is 50 drums.

Hazardous Waste Handling and Disposal

The drummed waste is transported from the point of generation to the storage facility by handtruck. Access to the yard area is through double doors at the southeast corner of the building. Both the interior building exit corridor and yard area have a level grade, facilitating drum handling. Spillage from the drum containers being handled has not occurred.

Off-site transportation and disposal is contracted to a local treatment, storage and disposal facility (TSD), Chemical Waste Disposal, 42-14 19th Street, Astoria, New York, EPA ID No. NYD077444263. The off specification lithium batteries are transported to Battery Disposal Technology, Clarence, New York, EPA ID No. NYD000632372. A driveway at the south end of the property provides truck access to the southeast yard area for truck loading.

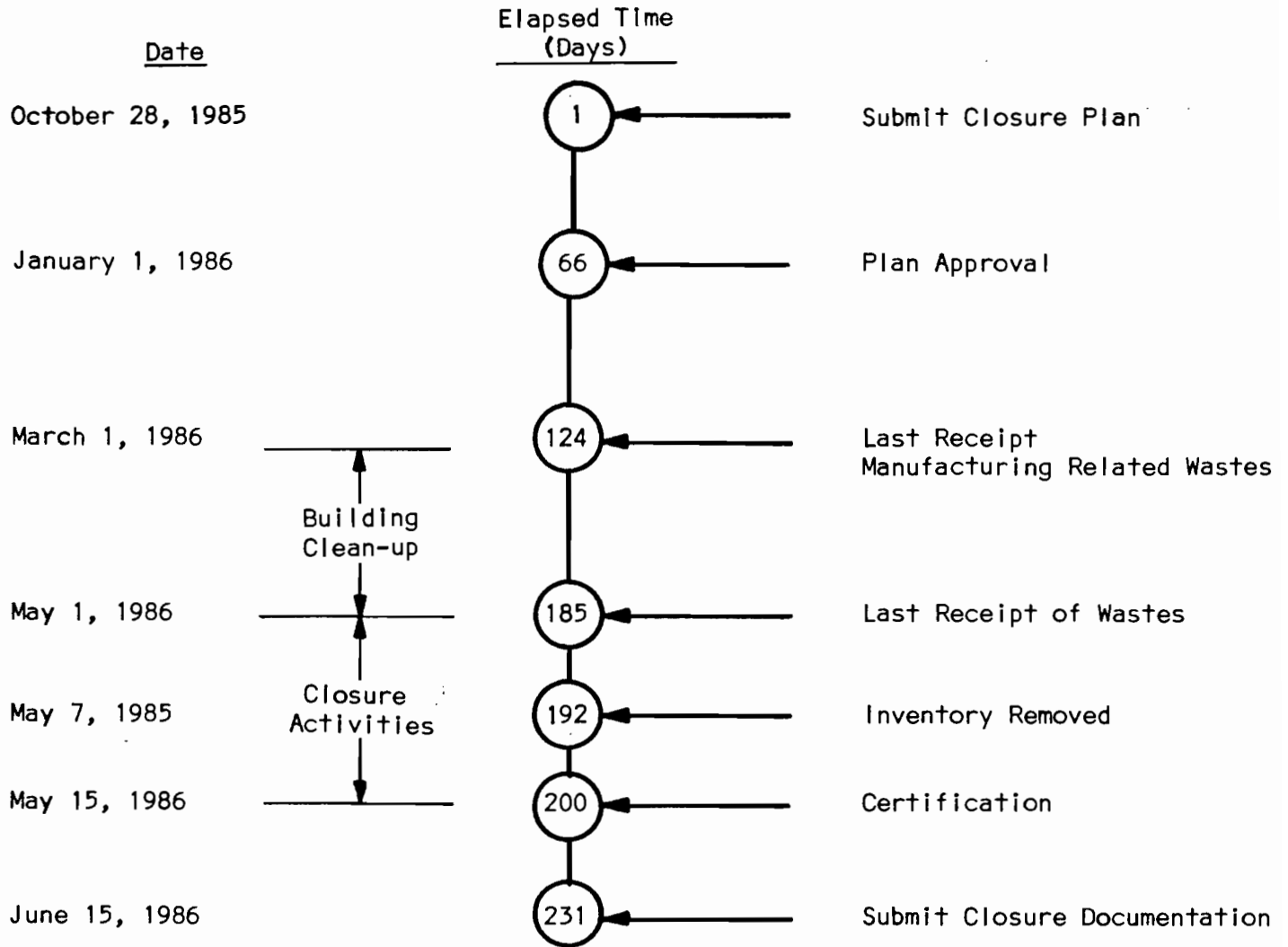
Schedule of Closure

The schedule of closure is presented in Figure 2. A 60 day period for public comment and plan approval by the DEC is provided. Equipment and materials remaining in the plant building from prior manufacturing activities are being removed for off-site reuse. Materials which are intended to be discarded and are hazardous wastes will be transferred to the hazardous waste storage facility. These removal activities are scheduled to end on March 1, 1986. The last receipt to the storage facility of hazardous wastes generated by this activity will occur by that day.

Duracell will then engage a contractor to clean the building, an activity which is anticipated to continue for about two months. Any hazardous materials which may be generated during this activity will be stored in the hazardous waste storage facility. The last receipt of hazardous wastes is scheduled to be on May 1, 1986 and facility closure will commence. Accumulated inventory will be removed and the facility will be decontaminated over the following two week period.

Closure certification will be made by an EA professional engineer on May 15, 1986 and the hazardous waste storage facility will be closed.

DURACELL, INC.
 NORTH TARRYTOWN, NEW YORK



Closure Plan

II. FUTURE HAZARDOUS WASTE GENERATION AND REMOVAL

Removal of equipment and materials remaining in the building from prior manufacturing activities will continue through February, 1986. Hazardous wastes generated by these activities should reflect past generating patterns. Hazardous wastes will be transferred to the storage facility and will be removed by the approved contractors who have been performing the transportation and disposal. It is estimated that about 10 drums of hazardous wastes will be generated. These drums will be removed by March 8, 1986.

Building cleaning, scheduled to start on March 1, 1986 will consist of removing accumulated residues, sludges and debris from floor trenches, interior manholes and duct work. Air handling units, air pollution control equipment and the interior surfaces of the building will be cleaned. The estimated quantities of waste materials to be generated are:

- removal of accumulated residues and equipment cleaning
 - solids 20 tons
 - sludges 20 tons
 - liquids 4,000 gallons

- building surface cleaning
 - solids 1 ton
 - liquids 15,000 gallons

All waste materials will be evaluated for hazardous waste characteristics and will be handled and disposed in accordance with regulatory requirements.

Liquids resulting from building surface cleaning will be pumped

into bulk tanker trucks for transport to an approved disposal facility. Other waste materials, if hazardous, will be drummed and placed in the storage facility. Assuming an average solids density of 75 lbs per cubic foot, a total of approximately 75 drums of solids will be generated. A total of about 170 drums of sludges and liquids will be generated. An average of 30 drums per week will be generated during the two month building cleanup period. These will be removed from the storage facility for off-site disposal on a weekly basis. The maximum number of drums in storage is not expected to exceed 30 drums.

III. INVENTORY REMOVAL AND FACILITY DECONTAMINATION

On May 1, 1986, the scheduled date for the commencement of closure, it is anticipated that not more than 30 drums of wastes from building clean-up will remain in the hazardous waste disposal facility. These drums will be analyzed for hazardous waste characteristics and removed to an approved disposal facility during the following week.

Residues remaining in the hazardous waste storage facility, if any, are expected to be dirt and grit carried in with the drums, possibly containing some trace hazardous waste. During the week following May 8, 1986, the facility will be decontaminated by collecting residues into a drum. All surfaces of the facility will be pressure washed with a water soluble solvent and hot water detergent, and rinsed with tap water.

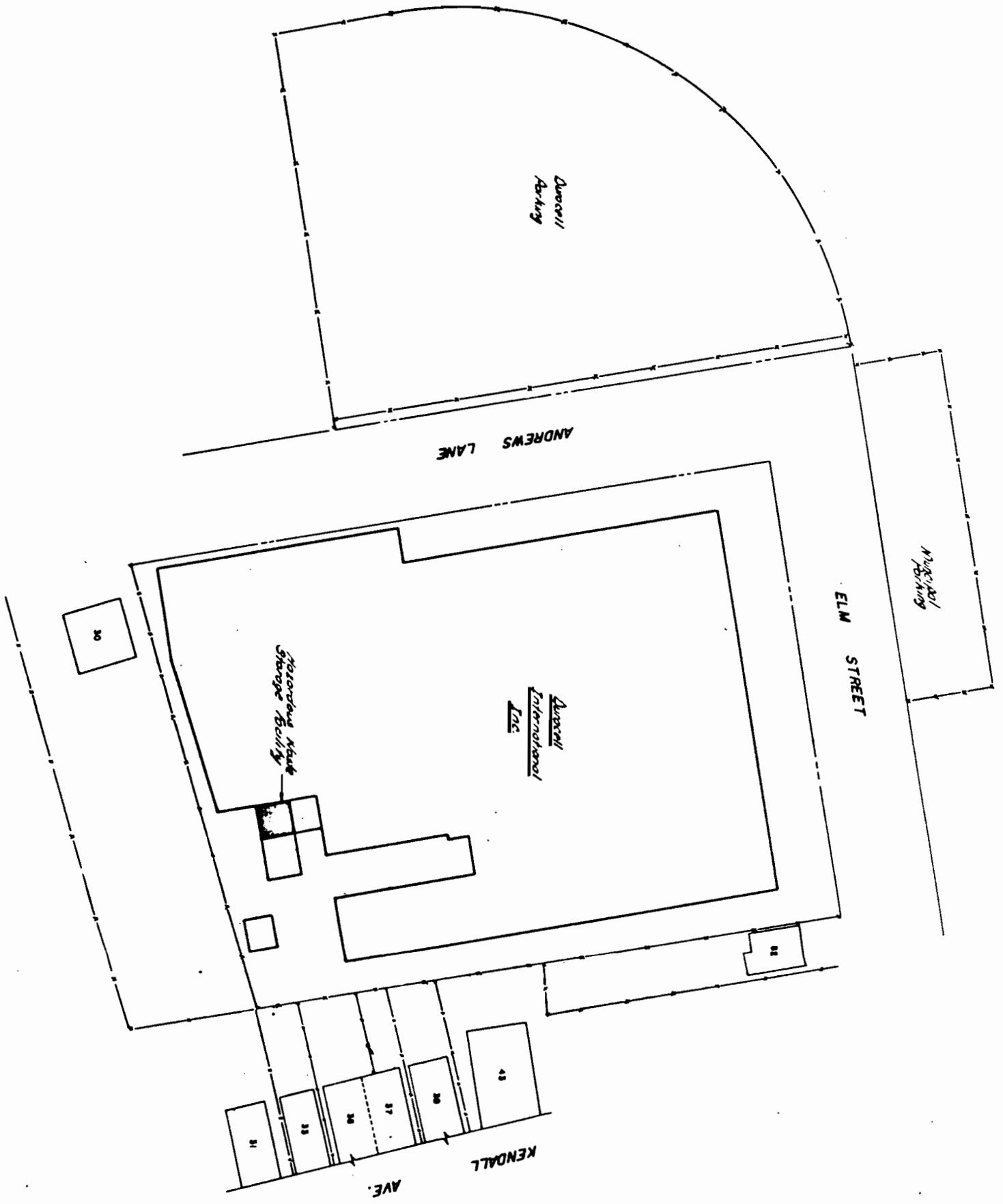
A temporary dam will be constructed around the facility on the imperious paving surface to collect wash and rinse water runoff for transfer to drums. Equipment used in the closure activities will be decontaminated by washing inside the dammed area.

Prior to performing the decontamination, a health and safety plan will be developed. All work will be performed in accordance with the plan under the supervision of a safety officer. Workers will be provided with protective clothing. Clean-up equipment to be discarded and protective clothing will be disposed of to drums.

Collected materials will be tested for hazardous waste characteristics and will be handled and disposed in accordance with applicable regulations.

IV. CLOSURE CERTIFICATION

On May 15, 1986, a professional engineer from EA will visit the site. A report will be prepared documenting the inventory removal and decontamination for submittal to the NYSDEC. This report will be submitted by June 15, 1986. Since this facility is a storage facility only, post-closure care is not required.



LEGEND
 30 House Numbers

HAZARDOUS WASTE FACILITY CLOSURE PLAN

DURACELL INTERNATIONAL, INC.
 NORTH TARRYTOWN, NEW YORK

eder associates consulting engineers, p.c.

NO.	REVISIONS	DATE	BY

PROJECT
 HAZARDOUS WASTE FACILITY
 CLOSURE PLAN
 DURACELL INTERNATIONAL, INC.
 NORTH TARRYTOWN, NEW YORK

TITLE
 PLOT PLAN

eder associates consulting engineers, p.c.
 60 FORT WASHINGTON AVENUE, NEW YORK, NY 10040

DESIGNED BY: *FLD* SCALE: 1" = 30'

DRAWN BY: *JSH* PROJECT NO: *425-1*

APPROVED BY: *GIF* DATE: *October 1985*

DATE: *October 1985* SHEET NO: **1**

APPENDIX A

EPA U.S. ENVIRONMENTAL PROTECTION AGENCY
NOTIFICATION OF HAZARDOUS WASTE ACTIVITY

INSTRUCTIONS: If you received a preprinted label, affix it in the space at left. If any of the information on the label is incorrect, draw a line through it and supply the correct information in the appropriate section below. If the label is complete and correct, leave Items I, II, and III below blank. If you did not receive a preprinted label, complete all items. "Installation" means a single site where hazardous waste is generated, treated, stored and/or disposed of, or a transporter's principal place of business. Please refer to the INSTRUCTIONS FOR FILING NOTIFICATION before completing this form. The information requested herein is required by law (Section 3010 of the Resource Conservation and Recovery Act).

INSTALLATION'S EPA I.D. NO.

I. NAME OF INSTALLATION

II. INSTALLATION MAILING ADDRESS

III. LOCATION OF INSTALLATION

PLEASE PLACE LABEL IN THIS SPACE

FOR OFFICIAL USE ONLY

COMMENTS

13 16

INSTALLATION'S EPA I.D. NUMBER													APPROVED		DATE RECEIVED (yr., mo., & day)								
F																							

I. NAME OF INSTALLATION

Duracell Intl Inc Lithium Systems Div

II. INSTALLATION MAILING ADDRESS

STREET OR P.O. BOX

360 Elm Street

CITY OR TOWN ST. ZIP CODE

4 North Tarrytown NY 10591

III. LOCATION OF INSTALLATION

STREET OR ROUTE NUMBER

5 Same

CITY OR TOWN ST. ZIP CODE

6 Same

IV. INSTALLATION CONTACT

NAME AND TITLE (last, first, & job title) **PHONE NO. (area code & no.)**

2 A. J. Cox Plant Manager 914-631-4014

V. OWNERSHIP

A. NAME OF INSTALLATION'S LEGAL OWNER

8 Duracell International Inc.

B. TYPE OF OWNERSHIP (enter the appropriate letter into box) **VI. TYPE OF HAZARDOUS WASTE ACTIVITY (enter "X" in the appropriate box(es))**

F - FEDERAL M - NON-FEDERAL

A. GENERATION B. TRANSPORTATION (complete item VII)

C. TREAT/STORE/DISPOSE D. UNDERGROUND INJECTION

VII. MODE OF TRANSPORTATION (transporters only - enter "X" in the appropriate box(es))

A. AIR B. RAIL C. HIGHWAY D. WATER E. OTHER (specify):

VIII. FIRST OR SUBSEQUENT NOTIFICATION

Mark "X" in the appropriate box to indicate whether this is your installation's first notification of hazardous waste activity or a subsequent notification. If this is not your first notification, enter your Installation's EPA I.D. Number in the space provided below.

A. FIRST NOTIFICATION B. SUBSEQUENT NOTIFICATION (complete item C)

C. INSTALLATION'S EPA I.D. NO.

IX. DESCRIPTION OF HAZARDOUS WASTES

Please go to the reverse of this form and provide the requested information.

IX. DESCRIPTION OF HAZARDOUS WASTES (continued from front)

A. HAZARDOUS WASTES FROM NON-SPECIFIC SOURCES. Enter the four-digit number from 40 CFR Part 261.31 for each listed hazardous waste from non-specific sources your installation handles. Use additional sheets if necessary.

<table border="1"><tr><td></td><td></td><td></td><td></td></tr><tr><td>23</td><td>-</td><td>26</td><td></td></tr></table>					23	-	26		<table border="1"><tr><td></td><td></td><td></td><td></td></tr><tr><td>23</td><td>-</td><td>26</td><td></td></tr></table>					23	-	26		<table border="1"><tr><td></td><td></td><td></td><td></td></tr><tr><td>23</td><td>-</td><td>26</td><td></td></tr></table>					23	-	26		<table border="1"><tr><td></td><td></td><td></td><td></td></tr><tr><td>23</td><td>-</td><td>26</td><td></td></tr></table>					23	-	26		<table border="1"><tr><td></td><td></td><td></td><td></td></tr><tr><td>23</td><td>-</td><td>26</td><td></td></tr></table>					23	-	26		<table border="1"><tr><td></td><td></td><td></td><td></td></tr><tr><td>23</td><td>-</td><td>26</td><td></td></tr></table>					23	-	26		<table border="1"><tr><td></td><td></td><td></td><td></td></tr><tr><td>23</td><td>-</td><td>26</td><td></td></tr></table>					23	-	26	
23	-	26																																																												
23	-	26																																																												
23	-	26																																																												
23	-	26																																																												
23	-	26																																																												
23	-	26																																																												
23	-	26																																																												
<table border="1"><tr><td></td><td></td><td></td><td></td></tr><tr><td>23</td><td>-</td><td>26</td><td></td></tr></table>					23	-	26		<table border="1"><tr><td></td><td></td><td></td><td></td></tr><tr><td>23</td><td>-</td><td>26</td><td></td></tr></table>					23	-	26		<table border="1"><tr><td></td><td></td><td></td><td></td></tr><tr><td>23</td><td>-</td><td>26</td><td></td></tr></table>					23	-	26		<table border="1"><tr><td></td><td></td><td></td><td></td></tr><tr><td>23</td><td>-</td><td>26</td><td></td></tr></table>					23	-	26		<table border="1"><tr><td></td><td></td><td></td><td></td></tr><tr><td>23</td><td>-</td><td>26</td><td></td></tr></table>					23	-	26		<table border="1"><tr><td></td><td></td><td></td><td></td></tr><tr><td>23</td><td>-</td><td>26</td><td></td></tr></table>					23	-	26		<table border="1"><tr><td></td><td></td><td></td><td></td></tr><tr><td>23</td><td>-</td><td>26</td><td></td></tr></table>					23	-	26	
23	-	26																																																												
23	-	26																																																												
23	-	26																																																												
23	-	26																																																												
23	-	26																																																												
23	-	26																																																												
23	-	26																																																												

B. HAZARDOUS WASTES FROM SPECIFIC SOURCES. Enter the four-digit number from 40 CFR Part 261.32 for each listed hazardous waste from specific industrial sources your installation handles. Use additional sheets if necessary.

<table border="1"><tr><td></td><td></td><td></td><td></td></tr><tr><td>23</td><td>-</td><td>26</td><td></td></tr></table>					23	-	26		<table border="1"><tr><td></td><td></td><td></td><td></td></tr><tr><td>23</td><td>-</td><td>26</td><td></td></tr></table>					23	-	26		<table border="1"><tr><td></td><td></td><td></td><td></td></tr><tr><td>23</td><td>-</td><td>26</td><td></td></tr></table>					23	-	26		<table border="1"><tr><td></td><td></td><td></td><td></td></tr><tr><td>23</td><td>-</td><td>26</td><td></td></tr></table>					23	-	26		<table border="1"><tr><td></td><td></td><td></td><td></td></tr><tr><td>23</td><td>-</td><td>26</td><td></td></tr></table>					23	-	26		<table border="1"><tr><td></td><td></td><td></td><td></td></tr><tr><td>23</td><td>-</td><td>26</td><td></td></tr></table>					23	-	26		<table border="1"><tr><td></td><td></td><td></td><td></td></tr><tr><td>23</td><td>-</td><td>26</td><td></td></tr></table>					23	-	26		<table border="1"><tr><td></td><td></td><td></td><td></td></tr><tr><td>23</td><td>-</td><td>26</td><td></td></tr></table>					23	-	26	
23	-	26																																																																					
23	-	26																																																																					
23	-	26																																																																					
23	-	26																																																																					
23	-	26																																																																					
23	-	26																																																																					
23	-	26																																																																					
23	-	26																																																																					
<table border="1"><tr><td></td><td></td><td></td><td></td></tr><tr><td>23</td><td>-</td><td>26</td><td></td></tr></table>					23	-	26		<table border="1"><tr><td></td><td></td><td></td><td></td></tr><tr><td>23</td><td>-</td><td>26</td><td></td></tr></table>					23	-	26		<table border="1"><tr><td></td><td></td><td></td><td></td></tr><tr><td>23</td><td>-</td><td>26</td><td></td></tr></table>					23	-	26		<table border="1"><tr><td></td><td></td><td></td><td></td></tr><tr><td>23</td><td>-</td><td>26</td><td></td></tr></table>					23	-	26		<table border="1"><tr><td></td><td></td><td></td><td></td></tr><tr><td>23</td><td>-</td><td>26</td><td></td></tr></table>					23	-	26		<table border="1"><tr><td></td><td></td><td></td><td></td></tr><tr><td>23</td><td>-</td><td>26</td><td></td></tr></table>					23	-	26		<table border="1"><tr><td></td><td></td><td></td><td></td></tr><tr><td>23</td><td>-</td><td>26</td><td></td></tr></table>					23	-	26		<table border="1"><tr><td></td><td></td><td></td><td></td></tr><tr><td>23</td><td>-</td><td>26</td><td></td></tr></table>					23	-	26	
23	-	26																																																																					
23	-	26																																																																					
23	-	26																																																																					
23	-	26																																																																					
23	-	26																																																																					
23	-	26																																																																					
23	-	26																																																																					
23	-	26																																																																					
<table border="1"><tr><td></td><td></td><td></td><td></td></tr><tr><td>23</td><td>-</td><td>26</td><td></td></tr></table>					23	-	26		<table border="1"><tr><td></td><td></td><td></td><td></td></tr><tr><td>23</td><td>-</td><td>26</td><td></td></tr></table>					23	-	26		<table border="1"><tr><td></td><td></td><td></td><td></td></tr><tr><td>23</td><td>-</td><td>26</td><td></td></tr></table>					23	-	26		<table border="1"><tr><td></td><td></td><td></td><td></td></tr><tr><td>23</td><td>-</td><td>26</td><td></td></tr></table>					23	-	26		<table border="1"><tr><td></td><td></td><td></td><td></td></tr><tr><td>23</td><td>-</td><td>26</td><td></td></tr></table>					23	-	26		<table border="1"><tr><td></td><td></td><td></td><td></td></tr><tr><td>23</td><td>-</td><td>26</td><td></td></tr></table>					23	-	26		<table border="1"><tr><td></td><td></td><td></td><td></td></tr><tr><td>23</td><td>-</td><td>26</td><td></td></tr></table>					23	-	26		<table border="1"><tr><td></td><td></td><td></td><td></td></tr><tr><td>23</td><td>-</td><td>26</td><td></td></tr></table>					23	-	26	
23	-	26																																																																					
23	-	26																																																																					
23	-	26																																																																					
23	-	26																																																																					
23	-	26																																																																					
23	-	26																																																																					
23	-	26																																																																					
23	-	26																																																																					

C. COMMERCIAL CHEMICAL PRODUCT HAZARDOUS WASTES. Enter the four-digit number from 40 CFR Part 261.33 for each chemical substance your installation handles which may be a hazardous waste. Use additional sheets if necessary.

<table border="1"><tr><td>U</td><td>0</td><td>0</td><td>3</td></tr><tr><td>23</td><td>-</td><td>26</td><td></td></tr></table>	U	0	0	3	23	-	26		<table border="1"><tr><td></td><td></td><td></td><td></td></tr><tr><td>23</td><td>-</td><td>26</td><td></td></tr></table>					23	-	26		<table border="1"><tr><td></td><td></td><td></td><td></td></tr><tr><td>23</td><td>-</td><td>26</td><td></td></tr></table>					23	-	26		<table border="1"><tr><td></td><td></td><td></td><td></td></tr><tr><td>23</td><td>-</td><td>26</td><td></td></tr></table>					23	-	26		<table border="1"><tr><td></td><td></td><td></td><td></td></tr><tr><td>23</td><td>-</td><td>26</td><td></td></tr></table>					23	-	26		<table border="1"><tr><td></td><td></td><td></td><td></td></tr><tr><td>23</td><td>-</td><td>26</td><td></td></tr></table>					23	-	26		<table border="1"><tr><td></td><td></td><td></td><td></td></tr><tr><td>23</td><td>-</td><td>26</td><td></td></tr></table>					23	-	26		<table border="1"><tr><td></td><td></td><td></td><td></td></tr><tr><td>23</td><td>-</td><td>26</td><td></td></tr></table>					23	-	26	
U	0	0	3																																																																				
23	-	26																																																																					
23	-	26																																																																					
23	-	26																																																																					
23	-	26																																																																					
23	-	26																																																																					
23	-	26																																																																					
23	-	26																																																																					
23	-	26																																																																					
<table border="1"><tr><td></td><td></td><td></td><td></td></tr><tr><td>23</td><td>-</td><td>26</td><td></td></tr></table>					23	-	26		<table border="1"><tr><td></td><td></td><td></td><td></td></tr><tr><td>23</td><td>-</td><td>26</td><td></td></tr></table>					23	-	26		<table border="1"><tr><td></td><td></td><td></td><td></td></tr><tr><td>23</td><td>-</td><td>26</td><td></td></tr></table>					23	-	26		<table border="1"><tr><td></td><td></td><td></td><td></td></tr><tr><td>23</td><td>-</td><td>26</td><td></td></tr></table>					23	-	26		<table border="1"><tr><td></td><td></td><td></td><td></td></tr><tr><td>23</td><td>-</td><td>26</td><td></td></tr></table>					23	-	26		<table border="1"><tr><td></td><td></td><td></td><td></td></tr><tr><td>23</td><td>-</td><td>26</td><td></td></tr></table>					23	-	26		<table border="1"><tr><td></td><td></td><td></td><td></td></tr><tr><td>23</td><td>-</td><td>26</td><td></td></tr></table>					23	-	26		<table border="1"><tr><td></td><td></td><td></td><td></td></tr><tr><td>23</td><td>-</td><td>26</td><td></td></tr></table>					23	-	26	
23	-	26																																																																					
23	-	26																																																																					
23	-	26																																																																					
23	-	26																																																																					
23	-	26																																																																					
23	-	26																																																																					
23	-	26																																																																					
23	-	26																																																																					
<table border="1"><tr><td></td><td></td><td></td><td></td></tr><tr><td>23</td><td>-</td><td>26</td><td></td></tr></table>					23	-	26		<table border="1"><tr><td></td><td></td><td></td><td></td></tr><tr><td>23</td><td>-</td><td>26</td><td></td></tr></table>					23	-	26		<table border="1"><tr><td></td><td></td><td></td><td></td></tr><tr><td>23</td><td>-</td><td>26</td><td></td></tr></table>					23	-	26		<table border="1"><tr><td></td><td></td><td></td><td></td></tr><tr><td>23</td><td>-</td><td>26</td><td></td></tr></table>					23	-	26		<table border="1"><tr><td></td><td></td><td></td><td></td></tr><tr><td>23</td><td>-</td><td>26</td><td></td></tr></table>					23	-	26		<table border="1"><tr><td></td><td></td><td></td><td></td></tr><tr><td>23</td><td>-</td><td>26</td><td></td></tr></table>					23	-	26		<table border="1"><tr><td></td><td></td><td></td><td></td></tr><tr><td>23</td><td>-</td><td>26</td><td></td></tr></table>					23	-	26		<table border="1"><tr><td></td><td></td><td></td><td></td></tr><tr><td>23</td><td>-</td><td>26</td><td></td></tr></table>					23	-	26	
23	-	26																																																																					
23	-	26																																																																					
23	-	26																																																																					
23	-	26																																																																					
23	-	26																																																																					
23	-	26																																																																					
23	-	26																																																																					
23	-	26																																																																					

D. LISTED INFECTIOUS WASTES. Enter the four-digit number from 40 CFR Part 261.34 for each listed hazardous waste from hospitals, veterinary hospitals, medical and research laboratories your installation handles. Use additional sheets if necessary.

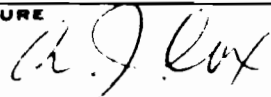
<table border="1"><tr><td></td><td></td><td></td><td></td></tr><tr><td>23</td><td>-</td><td>26</td><td></td></tr></table>					23	-	26		<table border="1"><tr><td></td><td></td><td></td><td></td></tr><tr><td>23</td><td>-</td><td>26</td><td></td></tr></table>					23	-	26		<table border="1"><tr><td></td><td></td><td></td><td></td></tr><tr><td>23</td><td>-</td><td>26</td><td></td></tr></table>					23	-	26		<table border="1"><tr><td></td><td></td><td></td><td></td></tr><tr><td>23</td><td>-</td><td>26</td><td></td></tr></table>					23	-	26		<table border="1"><tr><td></td><td></td><td></td><td></td></tr><tr><td>23</td><td>-</td><td>26</td><td></td></tr></table>					23	-	26		<table border="1"><tr><td></td><td></td><td></td><td></td></tr><tr><td>23</td><td>-</td><td>26</td><td></td></tr></table>					23	-	26		<table border="1"><tr><td></td><td></td><td></td><td></td></tr><tr><td>23</td><td>-</td><td>26</td><td></td></tr></table>					23	-	26		<table border="1"><tr><td></td><td></td><td></td><td></td></tr><tr><td>23</td><td>-</td><td>26</td><td></td></tr></table>					23	-	26	
23	-	26																																																																					
23	-	26																																																																					
23	-	26																																																																					
23	-	26																																																																					
23	-	26																																																																					
23	-	26																																																																					
23	-	26																																																																					
23	-	26																																																																					

E. CHARACTERISTICS OF NON-LISTED HAZARDOUS WASTES. Mark "X" in the boxes corresponding to the characteristics of non-listed hazardous wastes your installation handles. (See 40 CFR Parts 261.21 - 261.24.)

1. IGNITABLE (D001) 2. CORROSIVE (D002) 3. REACTIVE (D003) 4. TOXIC (D004)

X. CERTIFICATION

I certify under penalty of law that I have personally examined and am familiar with the information submitted in this and all attached documents, and that based on my inquiry of those individuals immediately responsible for obtaining the information, I believe that the submitted information is true, accurate, and complete. I am aware that there are significant penalties for submitting false information, including the possibility of fine and imprisonment.

SIGNATURE 	NAME & OFFICIAL TITLE (type or print) A.J. Cox, Plant Manager	DATE SIGNED 5/12/50
--	--	------------------------

Print or type in the unshaded areas only
 Fill-in areas are spaced for elite type, i.e., 12 characters/inch).

FORM 1	U.S. ENVIRONMENTAL PROTECTION AGENCY GENERAL INFORMATION <i>Consolidated Permits Program</i> <i>(Read the "General Instructions" before starting.)</i>	I. EPA I.D. NUMBER F NY D 0 0 0 6 9 2 9 1 3
II. FACILITY INFORMATION EPA I.D. NUMBER FACILITY NAME FACILITY MAILING ADDRESS FACILITY LOCATION	PLEASE PLACE LABEL IN THIS SPACE	GENERAL INSTRUCTIONS If a preprinted label has been provided, affix it in the designated space. Review the information carefully; if any of it is incorrect, cross through it and enter the correct data in the appropriate fill-in area below. Also, if any of the preprinted data is absent (the area to the left of the label space lists the information that should appear), please provide it in the proper fill-in area(s) below. If the label is complete and correct, you need not complete items I, III, V, and VI (except VI-B which must be completed regardless). Complete all items if no label has been provided. Refer to the instructions for detailed item descriptions and for the legal authorizations under which this data is collected.

III. POLLUTANT CHARACTERISTICS

INSTRUCTIONS: Complete A through J to determine whether you need to submit any permit application forms to the EPA. If you answer "yes" to any questions, you must submit this form and the supplemental form listed in the parenthesis following the question. Mark "X" in the box in the third column if the supplemental form is attached. If you answer "no" to each question, you need not submit any of these forms. You may answer "no" if your activity is excluded from permit requirements; see Section C of the instructions. See also, Section D of the instructions for definitions of bold-faced terms.

SPECIFIC QUESTIONS	MARK 'X'			SPECIFIC QUESTIONS	MARK 'X'		
	YES	NO	FORM ATTACHED		YES	NO	FORM ATTACHED
A. Is this facility a publicly owned treatment works which results in a discharge to waters of the U.S.? (FORM 2A)		X		B. Does or will this facility (either existing or proposed) include a concentrated animal feeding operation or aquatic animal production facility which results in a discharge to waters of the U.S.? (FORM 2B)		X	
C. Is this a facility which currently results in discharges to waters of the U.S. other than those described in A or B above? (FORM 2C)		X		D. Is this a proposed facility (other than those described in A or B above) which will result in a discharge to waters of the U.S.? (FORM 2D)		X	
E. Does or will this facility treat, store, or dispose of hazardous wastes? (FORM 3)	X			F. Do you or will you inject at this facility industrial or municipal effluent below the lowermost stratum containing, within one quarter mile of the well bore, underground sources of drinking water? (FORM 4)		X	
G. Do you or will you inject at this facility any produced water or other fluids which are brought to the surface in connection with conventional oil or natural gas production, inject fluids used for enhanced recovery of oil or natural gas, or inject fluids for storage of liquid hydrocarbons? (FORM 4)		X		H. Do you or will you inject at this facility fluids for special processes such as mining of sulfur by the Frasch process, solution mining of minerals, in situ combustion of fossil fuel, or recovery of geothermal energy? (FORM 4)		X	
I. Is this facility a proposed stationary source which is one of the 28 industrial categories listed in the instructions and which will potentially emit 100 tons per year of any air pollutant regulated under the Clean Air Act and may affect or be located in an attainment area? (FORM 5)		X		J. Is this facility a proposed stationary source which is NOT one of the 28 industrial categories listed in the instructions and which will potentially emit 250 tons per year of any air pollutant regulated under the Clean Air Act and may affect or be located in an attainment area? (FORM 5)		X	

III. NAME OF FACILITY

1 **SKIP** DURACELL INTL INC - LITHIUM SYSTEMS DIV.

IV. FACILITY CONTACT

A. NAME & TITLE (last, first, & title)	B. PHONE (area code & no.)
A. J. COX - PLANT MANAGER	914 631 4014

V. FACILITY MAILING ADDRESS

A. STREET OR P.O. BOX			
60 ELM STREET			
B. CITY OR TOWN		C. STATE	D. ZIP CODE
NORTH TARRYTOWN		NY	10591

VI. FACILITY LOCATION

A. STREET, ROUTE NO. OR OTHER SPECIFIC IDENTIFIER					
60 ELM STREET					
B. COUNTY NAME					
WESTCHESTER					
C. CITY OR TOWN			D. STATE	E. ZIP CODE	F. COUNTY CODE (if known)
NORTH TARRYTOWN			NY	10591	

A. FIRST

B. SECOND

6 9 2

(specify)

PRIMARY BATTERIES

7

(specify)

C. THIRD

D. FOURTH

(specify)

7

(specify)

OPERATOR INFORMATION

A. NAME

B. Is the name listed in item VIII-A also the owner?

YES NO

MURACELL INTERNATIONAL INC

C. STATUS OF OPERATOR (Enter the appropriate letter into the answer box; if "Other", specify.)

D. PHONE (area code & no.)

FEDERAL M - PUBLIC (other than federal or state)
 STATE O - OTHER (specify)
 PRIVATE P

P (specify) PRIVATE

2 0 3 7 9 2 2 2 2

E. STREET OR P.O. BOX

BERKSHIRE INDUSTRIAL PARK

F. CITY OR TOWN

G. STATE

H. ZIP CODE

IX. INDIAN LAND

BETHEL

CT

0 6 8 0 1

Is the facility located on Indian lands?

YES NO

EXISTING ENVIRONMENTAL PERMITS

A. NPDES (Discharges to Surface Water)

D. PSD (Air Emissions from Proposed Sources)

N P

9 P

B. UIC (Underground Injection of Fluids)

E. OTHER (specify)

U

9

C. RCRA (Hazardous Wastes)

E. OTHER (specify)

P

9

MAAP

Attach to this application a topographic map of the area extending to at least one mile beyond property boundaries. The map must show the outline of the facility, the location of each of its existing and proposed intake and discharge structures, each of its hazardous waste treatment, storage, or disposal facilities, and each well where it injects fluids underground. Include all springs, rivers and other surface water bodies in the map area. See instructions for precise requirements.

NATURE OF BUSINESS (provide a brief description)

MANUFACTURE OF PRIMARY BATTERIES

CERTIFICATION (see Instructions)

I certify under penalty of law that I have personally examined and am familiar with the information submitted in this application and all attachments and that, based on my inquiry of those persons immediately responsible for obtaining the information contained in the application, I believe that the information is true, accurate and complete. I am aware that there are significant penalties for submitting false information, including the possibility of fine and imprisonment.

NAME & OFFICIAL TITLE (type or print)

B. SIGNATURE

C. DATE SIGNED

11/17/80

REMARKS FOR OFFICIAL USE ONLY

Print in the unshaded areas only
 In areas are spaced for elite type, i.e., 12 characters/inch.



**U.S. ENVIRONMENTAL PROTECTION AGENCY
 HAZARDOUS WASTE PERMIT APPLICATION**
 Consolidated Permits Program
 (This information is required under Section 3005 of RCRA.)

I. EPA I.D. NUMBER												
1	2	3	4	5	6	7	8	9	10	11	12	T/A/C

FOR OFFICIAL USE ONLY

APPLICATION APPROVED	DATE RECEIVED (yr., mo., & day)

COMMENTS

FIRST OR REVISED APPLICATION

Place an "X" in the appropriate box in A or B below (mark one box only) to indicate whether this is the first application you are submitting for your facility or a revised application. If this is your first application and you already know your facility's EPA I.D. Number, or if this is a revised application, enter your facility's EPA I.D. Number in Item I above.

- FIRST APPLICATION** (place an "X" below and provide the appropriate date)
- 1. EXISTING FACILITY** (See instructions for definition of "existing" facility. Complete item below.)
- 2. NEW FACILITY** (Complete item below.)

FOR EXISTING FACILITIES, PROVIDE THE DATE (yr., mo., & day) OPERATION BEGAN OR THE DATE CONSTRUCTION COMMENCED (use the boxes to the left)

YR.	MO.	DAY
72	01	01

FOR NEW FACILITIES, PROVIDE THE DATE (yr., mo., & day) OPERATION BEGAN OR IS EXPECTED TO BEGIN

YR.	MO.	DAY

- REVISED APPLICATION** (place an "X" below and complete Item I above)
- 1. FACILITY HAS INTERIM STATUS**
- 2. FACILITY HAS A RCRA PERMIT**

II. PROCESSES - CODES AND DESIGN CAPACITIES

PROCESS CODE - Enter the code from the list of process codes below that best describes each process to be used at the facility. Ten lines are provided for entering codes. If more lines are needed, enter the code(s) in the space provided. If a process will be used that is not included in the list of codes below, then describe the process (including its design capacity) in the space provided on the form (Item III-C).

PROCESS DESIGN CAPACITY - For each code entered in column A enter the capacity of the process.

- AMOUNT** - Enter the amount.
- UNIT OF MEASURE** - For each amount entered in column B(1), enter the code from the list of unit measure codes below that describes the unit of measure used. Only the units of measure that are listed below should be used.

PROCESS	PROCESS CODE	APPROPRIATE UNITS OF MEASURE FOR PROCESS DESIGN CAPACITY	PROCESS	PROCESS CODE	APPROPRIATE UNITS OF MEASURE FOR PROCESS DESIGN CAPACITY
Storage:			Treatment:		
CONTAINER (barrel, drum, etc.)	S01	GALLONS OR LITERS	TANK	T01	GALLONS PER DAY OR LITERS PER DAY
TANK	S02	GALLONS OR LITERS	SURFACE IMPOUNDMENT	T02	GALLONS PER DAY OR LITERS PER DAY
WASTE PILE	S03	CUBIC YARDS OR CUBIC METERS	INCINERATOR	T03	TONS PER HOUR OR METRIC TONS PER HOUR; GALLONS PER HOUR OR LITERS PER HOUR
SURFACE IMPOUNDMENT	S04	GALLONS OR LITERS	OTHER (Use for physical, chemical, thermal or biological treatment processes not occurring in tanks, surface impoundments or incinerators. Describe the processes in the space provided; Item III-C.)	T04	GALLONS PER DAY OR LITERS PER DAY
Disposal:					
INJECTION WELL	D79	GALLONS OR LITERS			
LANDFILL	D80	ACRE-FEET (the volume that would cover one acre to a depth of one foot) OR HECTARE-METER			
LAND APPLICATION	D81	ACRES OR HECTARES			
OCEAN DISPOSAL	D82	GALLONS PER DAY OR LITERS PER DAY			
SURFACE IMPOUNDMENT	D83	GALLONS OR LITERS			

UNIT OF MEASURE	UNIT OF MEASURE CODE	UNIT OF MEASURE	UNIT OF MEASURE CODE	UNIT OF MEASURE	UNIT OF MEASURE CODE
GALLONS	G	LITERS PER DAY	V	ACRE-FEET	A
LITERS	L	TONS PER HOUR	D	HECTARE-METER	F
CUBIC YARDS	Y	METRIC TONS PER HOUR	W	ACRES	B
CUBIC METERS	C	GALLONS PER HOUR	E	HECTARES	Q
GALLONS PER DAY	U	LITERS PER HOUR	H		

EXAMPLE FOR COMPLETING ITEM III (shown in line numbers X-1 and X-2 below): A facility has two storage tanks, one tank can hold 200 gallons and the other can hold 400 gallons. The facility also has an incinerator that can burn up to 20 gallons per hour.

D U P																																						
<table border="1"> <tr> <td></td><td></td><td></td><td></td><td></td><td></td><td></td><td></td><td></td><td></td><td></td><td></td><td></td> </tr> <tr> <td></td><td></td><td></td><td></td><td></td><td></td><td></td><td></td><td></td><td></td><td></td><td></td><td></td> </tr> </table>																																						
LINE NUMBER	A. PROCESS CODE (from list above)	B. PROCESS DESIGN CAPACITY					FOR OFFICIAL USE ONLY	LINE NUMBER	A. PROCESS CODE (from list above)	B. PROCESS DESIGN CAPACITY					FOR OFFICIAL USE ONLY																							
		1. AMOUNT (specify)		2. UNIT OF MEASURE (enter code)						1. AMOUNT		2. UNIT OF MEASURE (enter code)																										
1	S 0 2	600		G				5																														
2	T 0 3	20		E				6																														
3	S 0 1	2420		G				7																														
								8																														
								9																														
								10																														

PROCESSES (continued)

PLACE FOR ADDITIONAL PROCESS CODES OR FOR DESCRIBING OTHER PROCESSES (code "T04"). FOR EACH PROCESS ENTERED HERE INCLUDE DESIGN CAPACITY.

DESCRIPTION OF HAZARDOUS WASTES

EPA HAZARDOUS WASTE NUMBER - Enter the four-digit number from 40 CFR, Subpart D for each listed hazardous waste you will handle. If you handle hazardous wastes which are not listed in 40 CFR, Subpart D, enter the four-digit number(s) from 40 CFR, Subpart C that describes the characteristics and/or the toxic contaminants of those hazardous wastes.

ESTIMATED ANNUAL QUANTITY - For each listed waste entered in column A estimate the quantity of that waste that will be handled on an annual basis. For each characteristic or toxic contaminant entered in column A estimate the total annual quantity of all the non-listed waste(s) that will be handled which possess that characteristic or contaminant.

UNIT OF MEASURE - For each quantity entered in column B enter the unit of measure code. Units of measure which must be used and the appropriate codes are:

ENGLISH UNIT OF MEASURE		CODE	METRIC UNIT OF MEASURE		CODE
POUNDS	P	KILOGRAMS	K
TONS	T	METRIC TONS	M

If facility records use any other unit of measure for quantity, the units of measure must be converted into one of the required units of measure taking into account the appropriate density or specific gravity of the waste.

PROCESSES

1. PROCESS CODES:

For listed hazardous waste: For each listed hazardous waste entered in column A select the code(s) from the list of process codes contained in Item III to indicate how the waste will be stored, treated, and/or disposed of at the facility.

For non-listed hazardous waste: For each characteristic or toxic contaminant entered in column A, select the code(s) from the list of process codes contained in Item III to indicate all the processes that will be used to store, treat, and/or dispose of all the non-listed hazardous wastes that possess that characteristic or toxic contaminant.

Note: Four spaces are provided for entering process codes. If more are needed: (1) Enter the first three as described above; (2) Enter "000" in the extreme right box of Item IV-D(1); and (3) Enter in the space provided on page 4, the line number and the additional code(s).

2. PROCESS DESCRIPTION: If a code is not listed for a process that will be used, describe the process in the space provided on the form.

NOTE: HAZARDOUS WASTES DESCRIBED BY MORE THAN ONE EPA HAZARDOUS WASTE NUMBER - Hazardous wastes that can be described by more than one EPA Hazardous Waste Number shall be described on the form as follows:

- Select one of the EPA Hazardous Waste Numbers and enter it in column A. On the same line complete columns B, C, and D by estimating the total annual quantity of the waste and describing all the processes to be used to treat, store, and/or dispose of the waste.
- In column A of the next line enter the other EPA Hazardous Waste Number that can be used to describe the waste. In column D(2) on that line enter "included with above" and make no other entries on that line.
- Repeat step 2 for each other EPA Hazardous Waste Number that can be used to describe the hazardous waste.

EXAMPLE FOR COMPLETING ITEM IV (shown in line numbers X-1, X-2, X-3, and X-4 below) - A facility will treat and dispose of an estimated 900 pounds per year of chrome shavings from leather tanning and finishing operation. In addition, the facility will treat and dispose of three non-listed wastes. Two wastes are corrosive only and there will be an estimated 200 pounds per year of each waste. The other waste is corrosive and ignitable and there will be an estimated 100 pounds per year of that waste. Treatment will be in an incinerator and disposal will be in a landfill.

LINE NO.	A. EPA HAZARD. WASTE NO. (enter code)	B. ESTIMATED ANNUAL QUANTITY OF WASTE	C. UNIT OF MEASURE (enter code)	D. PROCESSES				
				1. PROCESS CODES (enter)				2. PROCESS DESCRIPTION (if a code is not entered in D(1))
X-1	K054	900	P	T	0	3	D 8 0	
X-2	D002	400	P	T	0	3	D 8 0	
X-3	D001	100	P	T	0	3	D 8 0	
X-4	D002							included with above

EPA I.D. NUMBER (enter from page 1)

NY	D	0	0	0	6	9	2	9	1	3	T/A	C
											1	

FOR OFFICIAL USE ONLY

W	DUP	T/A	C
		2	DUP

DESCRIPTION OF HAZARDOUS WASTES (continued)

NO.	A. EPA HAZARD. WASTE NO. (enter code)			B. ESTIMATED ANNUAL QUANTITY OF WASTE	C. UNIT OF MEASURE (enter code)	D. PROCESSES				
	17	18	19			1. PROCESS CODES (enter)				2. PROCESS DESCRIPTION (if a code is not entered in D(1))
						27 - 29	27 - 29	27 - 29	27 - 29	
	U	0	0	3	3 0 2 4	P	S	0	1	
	D	0	0	3	2	P	S	0	1	
	D	0	0	3	1 5 6	P	S	0	1	
	D	0	0	3	1	P	S	0	1	
	D	0	0	8	1 5	P	S	0	1	
	D	0	0	1	5 7 6 0	P	S	0	1	
	D	0	0	1	3 4 8 0	P	S	0	1	
	D	0	0	2	1 8 7 2	P	S	0	1	
	D	0	0	1	1 9 8 0	P	S	0	1	
10	D	0	0	3						INCLUDED IN NO. 9
11										
12										
13										
14										
15										
16										
17										
18										
19										
20										
21										
22										
23										
24										
25										
26										

EPA I.D. NO. (enter from page 1)													
N	Y	D	O	O	O	6	9	2	9	1	3	T/A	C
													6

V. FACILITY DRAWING
 All existing facilities must include in the space provided on page 5 a scale drawing of the facility (see Instructions for more detail).

VI. PHOTOGRAPHS
 All existing facilities must include photographs (aerial or ground-level) that clearly delineate all existing structures; existing storage, treatment and disposal areas; and sites of future storage, treatment or disposal areas (see Instructions for more detail).

VII. FACILITY GEOGRAPHIC LOCATION

LATITUDE (degrees, minutes, & seconds)						LONGITUDE (degrees, minutes, & seconds)					
	7	3	5	2	000	0	4	1	0	5	012
	55	56	57	58	59 - 71	72	73	74	75	76	77 - 79

VIII. FACILITY OWNER

A. If the facility owner is also the facility operator as listed in Section VIII on Form 1, "General Information", place an "X" in the box to the left and skip to Section IX below.

B. If the facility owner is not the facility operator as listed in Section VIII on Form 1, complete the following items:

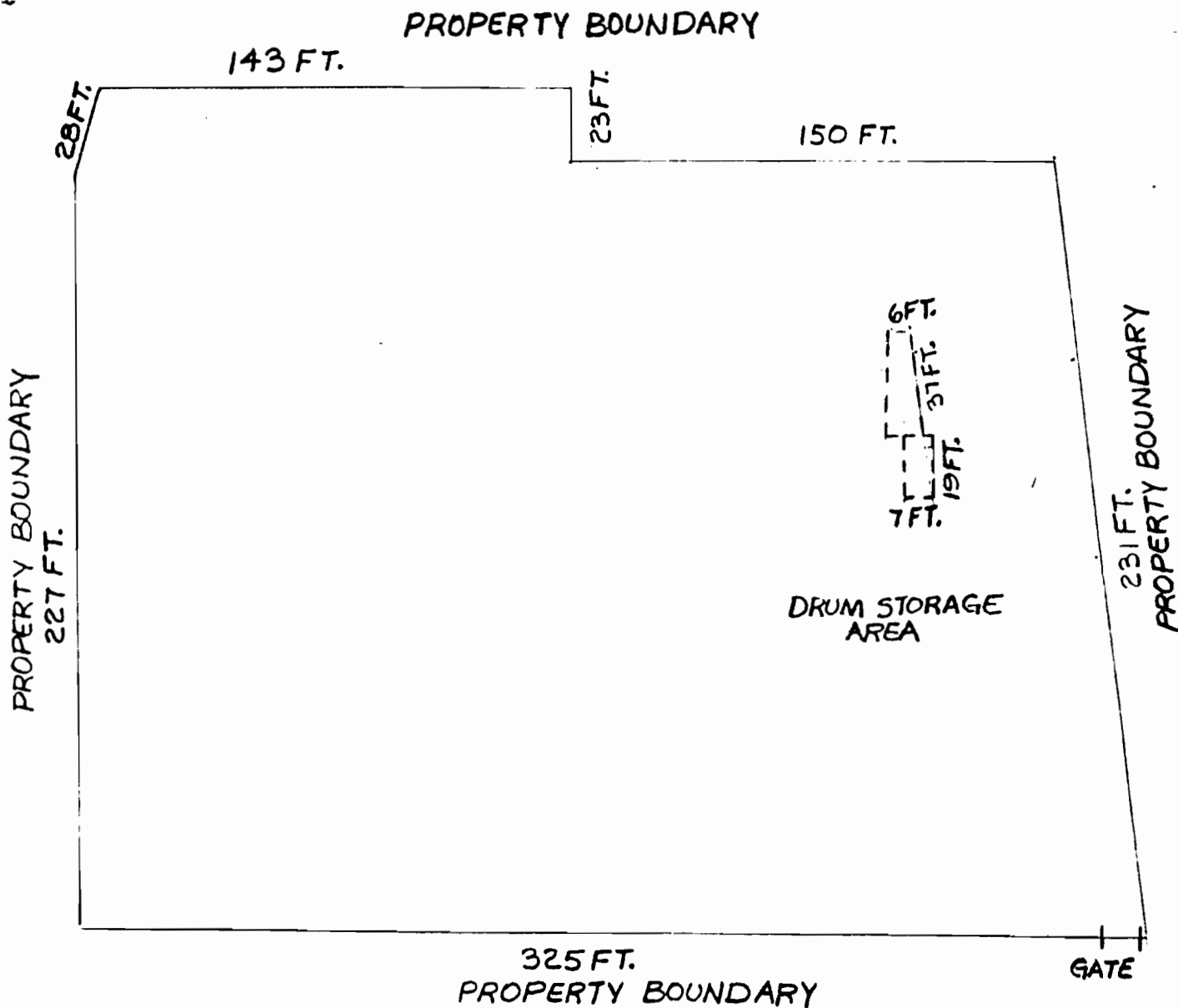
1. NAME OF FACILITY'S LEGAL OWNER				2. PHONE NO. (area code & no.)			
3. STREET OR P.O. BOX				4. CITY OR TOWN		5. ST.	
				G		6. ZIP CODE	

IX. OWNER CERTIFICATION
 I certify under penalty of law that I have personally examined and am familiar with the information submitted in this and all attached documents, and that based on my inquiry of those individuals immediately responsible for obtaining the information, I believe that the submitted information is true, accurate, and complete. I am aware that there are significant penalties for submitting false information, including the possibility of fine and imprisonment.

A. NAME (print or type)	B. SIGNATURE	C. DATE SIGNED
		11/17/80

X. OPERATOR CERTIFICATION
 I certify under penalty of law that I have personally examined and am familiar with the information submitted in this and all attached documents, and that based on my inquiry of those individuals immediately responsible for obtaining the information, I believe that the submitted information is true, accurate, and complete. I am aware that there are significant penalties for submitting false information, including the possibility of fine and imprisonment.

A. NAME (print or type)	B. SIGNATURE	C. DATE SIGNED



SCALE: 1 INCH = 50 FT.

9-27-83

CLOSURE PLAN FOR SOTRAGE FACILITY

DURACELL INTERNATIONAL, INC.
LITHIUM SYSTEMS DIVISION
60 ELM STREET
NORTH TARRYTOWN, N. Y. 10591

EPA IDENTIFICATION NO. NYD000692913

I. COMPLIANCE

- A. This plan must be submitted to the EPA Regional Administrator, 26 Federal Plaza; New York, New York 10007, at least 180 days before the date the closure is to begin.
- B. Within 90 days after receiving the final volume of hazardous waste, all on-site hazardous waste will be sent off-site and all equipment will be decontaminated.

II. FACILITY CONDITIONS

A. General Information

1. Size: The hazardous waste storage facility consists of:

- 1.1 18' X 6' storage room
- 1.2 18' X 11' storage room

2. Facilities: All hazardous waste is stored in specification containers.

3. Maximum On-Site Inventory: 50 Specification Containers

B. Schedule Of Final Closure:

	<u>Month</u>	<u>Year</u>
1. Final date waste to be accepted.	January	2031
2. Date all on-site inventory removed	January	2031
3. Date facility is decontaminated.	February	2031
4. Final date closure is completed.	March	2031
5. Total time required to close facility.	90 Days	

Cont.'d . . .

9-27-83

CLOSURE PLAN FOR STORAGE FACILITY

III. WASTE CHARACTERIZATION

A. WASTE LITHIUM BATTERIES FOR DISPOSAL

1. Lithium In Electrolyte (Batteries)
2. Solid Waste
3. Hazard Class "Flammable Solid"
(UN 1415 - EPA Waste Type D003)

B. WASTE FLAMMABLE LIQUID

1. Stoddard Solvent And Water
2. Liquid Waste
3. Hazard Class "Flammable Liquid"
(NA 1993 - EPA Waste Type D001)

C. WASTE ACETONITRILE

1. Waste Acetonitrile
2. Liquid Waste
3. Hazard Class "Flammable Liquid"
(NA 1648 - EPA Waste Type U003)

D. WASTE TRICHLOROTRIFLOURETHANE

1. Trichlorotriflourethane And Water
2. Liquid Waste
3. Hazard Class-ORM-A
(NA 1693 - EPA Waste Type F002)

E. WASTE PETROLEUM OIL

1. Petroleum Oil
2. Liquid Waste
3. Hazardous Class (Flammable Liquid)
(NA 1270 - EPA Waste Type D001)

IV. REMOVAL OF INVENTORY BY WASTE CLASSIFICATION

A. WASTE LITHIUM BATTERIES FOR DISPOSAL

1. Lithium In Electrolyte (Batteries)
2. Solid Waste
3. Hazard Class "Flammable Solid" (UN 1415 - EPA Waste Type D003)

Maximum Inventory: 5500 LBS. In 30 Containers

Method Of Removal: Licensed Transporter

Cont.'d.....

9-27-83

CLOSURE PLAN FOR STORAGE FACILITY

IV. (Continued)

B. WASTE FLAMMABLE LIQUID

1. Stoddard Solvent
2. Liquid Waste
3. Hazard Class "Combustible Liquid" (NA 1993 - EPA Waste Type D001)
Maximum Inventory: 2500 LBS. In 5 Containers
Method Of Removal: Licensed Transporter

C. WASTE ACETONITRILE

1. Waste Acetonitrile
2. Liquid Waste
3. Hazard Class "Combustible Liquid" (NA 1648 - EPA Waste Type U003)
Maximum Inventory: 2500 LBS. in 5 Containers
Method Of Removal: Licensed Transporter

D. WASTE TRICHLOROTRIFLOURETHANE

1. Trichlorotriflourethane And Water
2. Liquid Waste
3. Hazard Class-ORM-A (NA 1693 - EPA Waste Type F002)
Maximum Inventory-3000 LBS. in 5 Containers
Method Of Removal-Licensed Transporter
Maximum Inventory-2500 LBS. in 5 Containers
Method Of Removal-Licensed Transporter

E. WASTE PETROLEUM OIL

1. Petroleum Oil
2. Liquid Waste
3. Hazard Class-Flammable Liquid (NA 1270 - EPA Waste Type D001)
Maximum Inventory-2500 LBS. in 5 Containers
Method Of Removal-Licensed Transporter

V. DECONTAMINATION OF FACILITY

A. HAZARDOUS WASTE STORAGE AREA

1. Residue within area (306 sq. ft.) will be analyzed for hazard characteristics.
2. If found to be hazardous:
 - 2.1 Liquid pumped into drums;
 - 2.2 Residue accumulated in drums; and
 - 2.3 Drums transported by licensed transporter.
3. If not found to be hazardous:
 - 3.1 Liquid pumped into city sanitary system.

Cont'd.....

9-27-83

CLOSURE PLAN FOR STORAGE FACILITY

VI. CLOSURE CERTIFICATION

- A. Closure certification will be accomplished at a completion of closure, March 2031, by an independent registered professional engineer.

VII. COSTS

- A. Complete closure of the facility will cost approximately \$15,000.00.



NEW YORK STATE DEPARTMENT OF ENVIRONMENTAL CONSERVATION
DIVISION OF SOLID WASTE

GENERATOR / WASTE TRANSPORTER ANNUAL REPORT

for the year ending December 31, 19 _____

Page No. of

(2) **GENERATOR** EPA ID NUMBER **NYD000692913** OR **SMALL GENERATOR**

NAME **Duracell U.S.A.**
 STREET **60 Elm Street**
 CITY **N. Tarrytown,** STATE **New York** ZIP CODE **10591**

(3) **TRANSPORTER** EPA ID NUMBER _____ NYSDEC Part 364 Permit No. _____

NAME _____
 STREET _____
 CITY _____ STATE _____ ZIP CODE _____

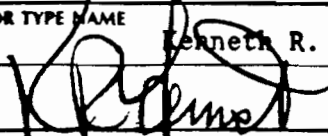
(4) **TREATMENT, STORAGE, OR DISPOSAL FACILITY (TSDF)**
 EPA ID NUMBER **NYD000692913** NYSDEC Facility I.D. No. _____

NAME **Duracell U.S.A.**
 STREET **60 Elm Street**
 CITY **N. Tarrytown** STATE **New York** ZIP CODE **10591**

WASTE INFORMATION

(5) WASTE DESCRIPTION	(6) WASTE CODE	(7) FORM	(8) HANDLING METHOD	(9) QUANTITY		(10) UNITS		(11) ON-OFF SITE
Waste Lithium Batt's for disposal	D003	02	S01	1	347	2	03	02
Waste Flammable Liquid (Stoddard Solvent)	D001	01	S01	1	170	0	03	02
Waste Alkaline Liquid	D002	01	S01		660	0	03	02
Waste Acetonitrile	U003	01	S01		600	0	03	02
Waste ORM-A (Trichlorotri Fluorethane)	P002	01	S01		2340	0	03	02
Waste Corrosive Liquid (Phosphoric Acid , Water)	D002	01	S01		300	0	03	02
Waste Corrosive Liquid (Sulfur Dioxide, Acetonitrile)	D002	01	S01		550	0	03	02

I hereby affirm under penalty of perjury that information provided on this form is true to the best of my knowledge and belief. False statements made herein are punishable as a Class A misdemeanor pursuant to Section 210.45 of the Penal Law.

(12) **PRINT OR TYPE NAME** Kenneth R. Forrest **TITLE** Facility Eng.
SIGNATURE  **DATE** 7/19/83

GENERATOR / WASTE TRANSPORTER ANNUAL REPORT

for the year ending December 31, 19

Page No. of

(2) GENERATOR EPA ID NUMBER N.Y. 101010169129113 OR SMALL GENERATOR EXEMPT GENERATOR

NAME Duracell USA
 STREET 60 Elm Street
 CITY North Tarrytown, STATE New York ZIP CODE 10591

(3) TRANSPORTER EPA ID NUMBER _____ NYSDEC Part 364 Permit No. _____

NAME _____
 STREET _____
 CITY _____ STATE _____ ZIP CODE _____

(4) TREATMENT, STORAGE, OR DISPOSAL FACILITY (TSDF)
 EPA ID NUMBER N.Y. 101010169129113 NYSDEC Facility I.D. No. _____

NAME Duracell USA
 STREET 60 Elm Street
 CITY North Tarrytown STATE New York ZIP CODE 10591

WASTE INFORMATION

(5) WASTE DESCRIPTION	(6) WASTE CODE	(7) FORM	(8) HANDLING METHOD	(9) QUANTITY	(10) UNITS	(11) ON-OFF SITE
Waste Lithium Batt's for Disposal	D 0 0 3	0 2	S 0 1	9 4 9 2	0 3	0 2
Waste Flammable Liquid N.O.S.	D 0 0 1	0 1	S 0 1	1 7 6 0	0 1	0 2
Waste ORM-A (Trichlorotriflourethane)	F 0 0 2	0 1	S 0 1	1 8 7 0	0 1	0 2
Waste Lithium in Oil	D 0 0 3	0 2	S 0 1	6 0	0 3	0 2
Waste Methylene Chloride	U 0 8 0	0 1	S 0 1	5 5	0 1	0 2
Waste Trichlorethane	U 2 2 7	0 1	S 0 1	5 5	0 1	0 2
Waste Alkaline Liquid N.O.S.	D 0 0 2	0 1	S 0 1	1 6 5	0 1	0 2

I hereby affirm under penalty of perjury that information provided on this form is true to the best of my knowledge and belief. False statements made herein are punishable as a Class A misdemeanor pursuant to Section 210.45 of the Penal Law.

(12) PRINT OR TYPE NAME: Kenneth R. Forrest TITLE: Facility Engineer
 SIGNATURE: *[Signature]* DATE: 1/24/84

NEW YORK STATE DEPARTMENT OF ENVIRONMENTAL CONSERVATION
DIVISION OF SOLID AND HAZARDOUS WASTE

GENERATOR ANNUAL REPORT

for the year ending December 31, 19 84

Page No.

1

of

2

 GENERATOR EPA ID NUMBER NY D 1 0 1 0 1 0 1 6 9 2 0 1 1 3 1 OR SMALL GENERATOR EXEMPT GENERATOR

NAME DURACELL USA TELEPHONE NUMBER 914-631-4014

STREET 60 ELM STREET

CITY NORTH TARRYTOWN STATE NY ZIP CODE 10591

TREATMENT, STORAGE, OR DISPOSAL FACILITY (TSDF)
EPA ID NUMBER NY D 1 0 1 7 7 4 4 4 2 6 3

NAME CHEMICAL WASTE DISPOSAL CORPORATION TELEPHONE NUMBER 718-274-3339

STREET 42-14 19th STREET

CITY ASTORIA STATE NY ZIP CODE 11105

WASTE INFORMATION

WASTE DESCRIPTION	WASTE CODE	HANDLING METHOD	QUANTITY (in Tons)
WASTE TRICHLOROTRIFLOURETHANE	F 0 0 2	L	1 7 . 5
WASTE FLAMMABLE LIQUID N.O.S. (STODDARD SOLVENT, WATER)	D 0 0 1	B	6 . 2
WASTE FLAMMABLE LIQUID N.O.S. (ALCOHOL WATER)	D 0 0 1	B	9 . 0
WASTE PETROLEUM OIL N.O.S.	D 0 0 1	B	4 . 8
WASTE LITHIUM BATTERIES FOR DISPOSAL	D 0 0 3	L	2 . 2
WASTE ACETONE (TRILE)	D 0 0 1	B	1 . 5
WASTE CORROSIVE LIQUID (LAB CHEM)	D 0 0 2	L	. 3
WASTE OXIDIZER (LAB CHEM)	D 0 0 1	L	. 2
WASTE POISON (LAB CHEM)	F 0 0 1	L	. 2

I hereby affirm under penalty of perjury that information provided on this form is true to the best of my knowledge and belief. False statements made here are punishable as a Class A misdemeanor pursuant to Section 210.45 of the Penal Law.

PRINT OR TYPE NAME KENNETH R. ...	TITLE FACILITY ENGINEER	DATE 2/11/85
SIGNATURE <i>Kenneth R. ...</i>		



NEW YORK STATE DEPARTMENT OF ENVIRONMENTAL CONSERVATION
DIVISION OF SOLID AND HAZARDOUS WASTE

GENERATOR ANNUAL REPORT

for the year ending December 31, 19 84

Page No. 2 of 2

GENERATOR EPA ID NUMBER NY 10104 6 9 219 113 OR SMALL GENERATOR EXEMPT GENERATOR

NAME DURACELL USA TELEPHONE NUMBER 914-631-4014

STREET 60 ELM STREET

CITY NORTH TARRYTOWN STATE NY ZIP CODE 10591

TREATMENT, STORAGE, OR DISPOSAL FACILITY (TSDF)
EPA ID NUMBER NY 10104 6 9 219 113

NAME BATTERY DISPOSAL TECH. TELEPHONE NUMBER 716-873-9703

STREET 1000 WEHRIE DRIVE

CITY CLARENCE STATE NY ZIP CODE 14031

WASTE INFORMATION			
WASTE DESCRIPTION	WASTE CODE	HANDLING METHOD	QUANTITY (in Tons)

WASTE LITHIUM BATTERY FOR DISPOSAL	D101013	IT1	71.18

I hereby affirm under penalty of perjury that information provided on this form is true to the best of my knowledge and belief. False statements made herein are punishable as a Class A misdemeanor pursuant to Section 210.45 of the Penal Law.

PRINT OR TYPE NAME KENNETH R. FORREST TITLE FACILITY ENGINEER
SIGNATURE *Kenneth R. Forrest* DATE 2/11/85

DEPARTMENT OF ENVIRONMENTAL CONSERVATION
 DIVISION OF SOLID AND HAZARDOUS WASTE
HAZARDOUS WASTE MANIFEST
 P.O. Box 12820, Albany, New York 12212

Please print or type.

Form Approved OMB No. 2000-0404. Expires 7-31-86

UNIFORM HAZARDOUS WASTE MANIFEST

1. Generator's US EPA No.

Manifest Document No

2. Page 1 of

Information in the shaded areas is not required by Federal Law.

3. Generator's Name and Mailing Address

**SURACHEL, INC
 60 HILL STREET**

4. Generator's Phone

914 661-4614

5. Transporter 1 (Company Name)

**WINDWARD TRUCK
 1140 MILITARY ROAD**

6. US EPA ID Number

NYD 000692913

7. Transporter 2 (Company Name)

8. US EPA ID Number

9. Designated Facility Name and Site Address

**SECURITY DISPOSAL TECHNOLOGY
 10000 WINDY DRIVE
 CLARKSON, NY 14031**

10. US EPA ID Number

NYD 000692913

11. US DOT Description (Including Proper Shipping Name, Hazard Class and ID Number)

**HAZARDOUS LIQUID RESIDUES FOR DISPOSAL
 (CONTAINS HIGH pH) (FLAMMABLE SOLID)**

12. Containers

No. Type

13. Total

Quantity

14. Unit

Wt/Vol

	No.	Type	Quantity	Unit
a.	5	DRUM	5	DRUM
b.				
c.				
d.				

Additional Descriptions for Materials Listed Above

15. Special Handling Instructions and Additional Information

16. **GENERATOR'S CERTIFICATION:** I hereby declare that the contents of this consignment are fully and accurately described above by proper shipping name and are classified, packed, marked and labeled, and are in all respects in proper condition for transport by highway according to applicable international and national governmental regulations and state laws and regulations.

Printed/Typed Name
KENNETH R. FORREST

Signature
Kenneth R. Forrest

DATE
 Month Day Year
07 23 85

17. Transporter 1 (Acknowledgement of Receipt of Materials)

Printed/Typed Name
ROBERT J. DUMI

Signature
Robert J. Dumi

DATE
 Month Day Year
07 23 85

18. Transporter 2 (Acknowledgement or Receipt of Materials)

Printed/Typed Name

Signature

Month Day Year

19. Discrepancy Indication Space

20. Facility Owner or Operator: Certification of receipt of hazardous materials covered by this manifest except as noted in Item 19.

Printed/Typed Name

Signature

DATE
 Month Day Year

If limited liability call... station... Department of Transportation (518) 457-7362.

GENERATOR

TRANSPORTER

FACILITY

NY A 10000 WINDY DRIVE

STATE OF NEW YORK
DEPARTMENT OF ENVIRONMENTAL CONSERVATION
DIVISION OF SOLID AND HAZARDOUS WASTE
HAZARDOUS WASTE MANIFEST

P.O. Box 12820, Albany, New York 12212

Form Approved. OMB No. 2000-0404. Expires 7-31-86

Please print or type.

UNIFORM HAZARDOUS WASTE MANIFEST		1. Generator's US EPA No. NYD000692913	Manifest Document No.	2. Page 1 of	Information in the shaded areas is not required by Federal Law.
3. Generator's Name and Mailing Address DURACELL INTERNATIONAL 60 Elm St. North Tarrytown, N.Y. 10991			A. State Manifest Document No. NY A 21116 6		
4. Generator's Phone 914 631-4014			B. Generator's ID 0000		
5. Transporter 1 (Company Name) CHEMICAL WASTE DISPOSAL CORP.		6. US EPA ID Number NYD077444263		C. State Transporter's ID 718 24-11	
7. Transporter 2 (Company Name)		8. US EPA ID Number		D. Transporter's Phone 718 24-11	
9. Designated Facility Name and Site Address CHEMICAL WASTE DISPOSAL CORP. 42-14 19th Ave. Astoria, N.Y. 11105			10. US EPA ID Number NYD077444263		
11. US DOT Description (Including Proper Shipping Name, Hazard Class and ID Number)		12. Containers No.	Type	13. Total Quantity	14. Unit Wt/Vol
a. WASTE SOLID FLAMMABLE LIQUID NOS 1200					
b. WASTE SOLID FLAMMABLE LIQUID NOS 1993					
c. WASTE FLAMMABLE LIQUID NOS 1993					
d. WASTE POISONOUS SOLID NOS 2811					
15. Special Handling Instructions and Additional Information					
16. GENERATOR'S CERTIFICATION: I hereby declare that the contents of this consignment are fully and accurately described above by proper shipping name and are classified, packed, marked and labeled, and are in all respects in proper condition for transport by highway according to applicable international and national governmental regulations and state laws and regulations.					
Printed/Typed Name		Signature		DATE	
VINCENT R. FERRI		<i>[Signature]</i>		03 15 85	
17. Transporter 1 (Acknowledgement or Receipt of Materials)					
Printed/Typed Name		Signature		DATE	
TOM FOXAZIO		<i>[Signature]</i>		03 15 85	
18. Transporter 2 (Acknowledgement or Receipt of Materials)					
Printed/Typed Name		Signature		DATE	
19. Discrepancy Indication Space					
20. Facility Owner or Operator: Certification of receipt of hazardous materials covered by this manifest except as noted in Item 19.					
Printed/Typed Name		Signature		DATE	

In case of emergency or spill immediately call the National Response Center (800) 424-8802 and the N.Y. Department of Transportation (518) 457-7362.

DIVISION OF SOLID AND HAZARDOUS WASTE
HAZARDOUS WASTE MANIFEST
 P.O. Box 12820, Albany, New York 12212

Please print or type.

Form Approved. OMB No 2000-0404. Expires 7-31-86

1. Generator's US EPA No. UNIFORM HAZARDOUS WASTE MANIFEST NYD0000692913		Manifest Document No.		2. Page 1 of 1		Information in the shaded areas is not required by Federal Law.		
3. Generator's Name and Mailing Address DURACELL USA. 60 ELM ST. NITARSZY TOWN, NY . 10591				A. State Manifest ID NY A 111111		B. State Department of Environmental Conservation		
4. Generator's Phone ()				C. State Transporter ID 5AM		D. Transporter's Phone 716 873 9703		
5. Transporter 1 (Company Name) TONAWANDA TANK 1140 MILITARY RD. BUFFALO, NY		6. US EPA ID Number NYD097644801		E. State Transporter's ID		F. Transporter's Phone		
7. Transporter 2 (Company Name)		8. US EPA ID Number		G. State Facility ID		H. Facility's Phone		
9. Designated Facility Name and Site Address BATTERY DISPOSAL TECH. 10,000 WEHRLE DR. CLARENCE, NY				10. US EPA ID Number NYD0000632322		I. Facility's Phone		
11. US DOT Description (Including Proper Shipping Name, Hazard Class and ID Number)						12. Containers	13. Total Quantity	14. Unit Wt/Vol
a. WASTE LITHIUM BATTERIES FOR DISPOSAL (DANGEROUS WHEN WET - FLAMMABLE SOLID) UN-C						043 DM	4945 P	3
b. WASTE LITHIUM METAL (DANGEROUS WHEN WET - FLAMMABLE SOLID) UN-1415						008 DM	153 P	3
c. WASTE LITHIUM BATT, FOR DISPOSAL ORM-C						019 CW	760 P	3
d.								
15. Special Handling Instructions and Additional Information								
16. GENERATOR'S CERTIFICATION: I hereby declare that the contents of this consignment are fully and accurately described above by proper shipping name and are classified, packed, marked and labeled, and are in all respects in proper condition for transport by highway according to applicable international and national governmental regulations and state laws and regulations.								
17. Transporter 1 (Acknowledgement of Receipt of Materials)						DATE		
Printed/Typed Name KENNETH P FORREST				Signature <i>Kenneth P Forrest</i>		Month	Day	Year
						4	23	85
18. Transporter 2 (Acknowledgement of Receipt of Materials)						DATE		
Printed/Typed Name MARK BURSUTINSKY				Signature <i>Mark Bursutinsky</i>		Month	Day	Year
						10	4	85
19. Discrepancy Indication Space						DATE		
20. Facility Owner or Operator: Certification of receipt of hazardous materials covered by this manifest except as noted in Item 19.						DATE		
Printed/Typed Name LEE OMAN				Signature <i>Lee Oman</i>		Month	Day	Year
						10	4	85

1 (518) 362
ansp
rtmer
e N.Y.
8602
ler (8
spon
Natic
ely c
ill im
genc

NYA 123676 2

STATE OF NEW YORK
DEPARTMENT OF ENVIRONMENTAL CONSERVATION
DIVISION OF SOLID AND HAZARDOUS WASTE
HAZARDOUS WASTE MANIFEST

P.O. Box 12820, Albany, New York 12212

Form Approved. OMB No. 2000-0404. Expires 7-31-86

Please print or type.

UNIFORM HAZARDOUS WASTE MANIFEST		1. Generator's US EPA No. NYD000692913	Manifest Document No.	2. Page 1 of 1	Information in the shaded areas is not required by Federal Law.	
3. Generator's Name and Mailing Address DUNDELL INTERNATIONAL 60 ELM STREET, NORTH TOWNSHIRE, N.Y. 10091			A. State Hazardous Waste ID No. NY 10091			
4. Generator's Phone (914) 431 4814			B. State Hazardous Waste ID No. NY 10091			
5. Transporter 1 (Company Name) CHEMICAL WASTE DISPOSAL CORP.		6. US EPA ID Number NYD077444263		C. State Transporter ID No. 775-511		
7. Transporter 2 (Company Name)		8. US EPA ID Number		D. Transporter's Phone ()		
9. Designated Facility Name and Site Address CHEMICAL WASTE DISPOSAL CORP. 42-14 19TH AVENUE ASTORIA, NEW YORK 11105			10. US EPA ID Number NYD077444263			
11. US DOT Description (Including Proper Shipping Name, Hazard Class and ID Number)			12. Containers		13. Total Quantity	14. Unit
			No.	Type		Wt/Vol
a. WASTE - HAZARDOUS						
b. 16 DRUMS			16	DR	72	G
c. 121						
d.						
15. Special Handling Instructions and Additional Information						
16. GENERATOR'S CERTIFICATION: I hereby declare that the contents of this consignment are fully and accurately described above by proper shipping name and are classified, packed, marked and labeled, and are in all respects in proper condition for transport by highway according to applicable international and national governmental regulations and state laws and regulations.						
Printed/Typed Name John F. ...			Signature <i>[Signature]</i>		DATE 08/05/81	
17. Transporter 1 (Acknowledgement of Receipt of Materials)						
Printed/Typed Name KATHY DUCA			Signature <i>[Signature]</i>		DATE 08/05/81	
18. Transporter 2 (Acknowledgement or Receipt of Materials)						
Printed/Typed Name			Signature		DATE	
19. Discrepancy Indication Space						
20. Facility Owner or Operator. Certification of receipt of hazardous materials covered by this manifest except as noted in Item 19.						
Printed/Typed Name			Signature		DATE	

ansp 1 (5) 362
rtmer
e N.Y.
8802
ter (800
The National Response
Call immediately
spill

NYA 246873

DEPARTMENT OF ENVIRONMENTAL CONSERVATION
 DIVISION OF SOLID AND HAZARDOUS WASTE
HAZARDOUS WASTE MANIFEST
 P.O. Box 12820, Albany, New York 12212

Form Approved. OMB No. 2000-0404. Expires 7-31-86

Please print or type.

1. Generator's US EPA No. NYDD006127131		Manifest Document No		2. Page 1 of		Information in the shaded areas is not required by Federal Law							
3. Generator's Name and Mailing Address DUKACELL U.S.A. 60 ELM ST. N. TOWN TOWNSHIP, N.Y. 10591				A. State Manifest Document No. NY A 128078 9									
4. Generator's Phone () 914-631-4014				B. State generator's ID SHME 18946 G									
5. Transporter 1 (Company Name) HEINICH WHITE DISPOSAL CORP.		6. US EPA ID Number NYDD1744263		C. State Transporter's ID 177027									
7. Transporter 2 (Company Name)		8. US EPA ID Number		D. Transporter's Phone ()									
9. Designated Facility Name and Site Address CHEMICAL WASTE CORP. 42-14 11TH ST ASTORIA, N.Y. 11005		10. US EPA ID Number NYDD071444263		E. State Transporter's ID									
				F. Transporter's Phone ()									
				G. State Facility's ID									
				H. Facility's Phone 718-274-3337									
11. US DOT Description (Including Proper Shipping Name, Hazard Class and ID Number)						12. Containers		13. Total		14. Unit		15. Waste ID	
						No. Type		Quantity		Wt/Vol			
a. WASTE ALKALINE LIQUID N.O.S. UN1111						003 UM		125 G				002	
b. WASTE CORROSIVE LIQUID N.O.S. UN1760						001 UM		55 G				002	
c. WASTE PETROLEUM OIL N.O.S. UN1113						010 UM		550 G				002	
d.													
J. Additional Descriptions for Materials Listed Above						K. Handling Codes for Wastes Listed Above							
[Shaded]						[Shaded]							
15. Special Handling Instructions and Additional Information													
16. GENERATOR'S CERTIFICATION: I hereby declare that the contents of this consignment are fully and accurately described above by proper shipping name and are classified, packed, marked and labeled, and are in all respects in proper condition for transport by highway according to applicable international and national governmental regulations and state laws and regulations.													
Printed/Typed Name				Signature				DATE					
								Month Day Year					
17. Transporter 1 (Acknowledgement of Receipt of Materials)													
Printed/Typed Name Ralph Ducca				Signature <i>[Signature]</i>				DATE 8/3/85					
								Month Day Year					
18. Transporter 2 (Acknowledgement or Receipt of Materials)													
Printed/Typed Name				Signature				DATE					
								Month Day Year					
19. Discrepancy Indication Space													
20. Facility Owner or Operator: Certification of receipt of hazardous materials covered by this manifest except as noted in Item 19.													
Printed/Typed Name				Signature				DATE					
								Month Day Year					

NY A 128078 9

DEPARTMENT OF ENVIRONMENTAL CONSERVATION
 DIVISION OF SOLID AND HAZARDOUS WASTE
HAZARDOUS WASTE MANIFEST
 P.O. Box 12820, Albany, New York 12212

Form Approved OMB No. 2000-0404 Expires 7-31-86

or type

1. Generator's US EPA No. NYD0006929121		Manifest Document No.		2. Page 1 of		Information in the shaded areas is not required by Federal Law.	
3. Generator's Name and Mailing Address CHRYSLER WHITE CORP 1517 15TH ST ATONA, NY 11005				A. State Manifest Document No. NY A 120077 1			
4. Generator's Phone ()				B. State generator's ID 114C			
5. Transporter 1 (Company Name) DIPOLO		6. US EPA ID Number NY00179112E0		C. State Transporter's ID 114E1			
7. Transporter 2 (Company Name)				D. Transporter's Phone ()			
8. US EPA ID Number				E. State Transporter's ID			
9. Designated Facility Name and Site Address CHRYSLER WHITE CORP 1517 15TH ST ATONA, NY 11005				10. US EPA ID Number NYD01744424		G. State Facility's ID	
				H. Facility's Phone 718 274-3339			
11. US DOT Description (Including Proper Shipping Name, Hazard Class and ID Number)				12. Containers		13. Total Quantity	
				No. Type		Unit Wt/Vol	
a. WHITE SOLID WASTE UN1787				002 DM		110 G D001	
b. WASTE ACETONITRILE NA1648				004 DM		220 G D001	
c. WHITE TRICHLOROETHYLENE NA1673				003 DM		165 G F002	
d. WHITE SODIUM HYDROXIDE UN1624				004 DM		220 G D002	
J. Additional Descriptions for Materials listed Above				K. Handling Codes for Wastes Listed Above			
				<input type="checkbox"/> B <input type="checkbox"/> C <input type="checkbox"/> D <input type="checkbox"/> E <input type="checkbox"/> F <input type="checkbox"/> G <input type="checkbox"/> H <input type="checkbox"/> I <input type="checkbox"/> J <input type="checkbox"/> K			
15. Special Handling Instructions and Additional Information							
16. GENERATOR'S CERTIFICATION: I hereby declare that the contents of this consignment are fully and accurately described above by proper shipping name and are classified, packed, marked and labeled, and are in all respects in proper condition for transport by highway according to applicable international and national governmental regulations and state laws and regulations.							
Printed/Typed Name				Signature		DATE	
17. Transporter 1 (Acknowledgement of Receipt of Materials)						Month Day Year	
Printed/Typed Name Ralph Duxa				Signature <i>R Duxa</i>		Month Day Year 8/13/85	
18. Transporter 2 (Acknowledgement or Receipt of Materials)						DATE	
Printed/Typed Name				Signature		Month Day Year	
19. Discrepancy Indication Space							
20. Facility Owner or Operator: Certification of receipt of hazardous materials covered by this manifest except as noted in Item 19.							
Printed/Typed Name				Signature		DATE	
						Month Day Year	

DEPARTMENT OF ENVIRONMENTAL CONSERVATION
DIVISION OF SOLID AND HAZARDOUS WASTE
HAZARDOUS WASTE MANIFEST
P.O. Box 12820, Albany, New York 12212

Form Approved OMB No 2000-0404 Expires 7-31-86

Please print or type

UNIFORM HAZARDOUS WASTE MANIFEST		1. Generator's US EPA No. NYD0000692913	Manifest Document No	2. Page 1 of 1	Information in the shaded areas is not required by Federal Law		
3. Generator's Name and Mailing Address DICKINSON CORP. 60 ELIOT ST. N. HARRISTOWN, NY 12531				A. State Manifest Document No NYA 1388727			
4. Generator's Phone 518-631-4014				B. State generator's ID SAME			
5. Transporter 1 (Company Name) HAZMAT		6. US EPA ID Number NYD730769941		C. State Transporter's ID 6612 RF (N.Y.)			
7. Transporter 2 (Company Name)				D. Transporter's Phone 708 872-5533			
8. US EPA ID Number				E. State Transporter's ID			
9. Designated Facility Name and Site Address BATTERY DISPOSAL TECH. 13000 WENHIE DR. CLARENCE, NY				F. Transporter's Phone			
10. US EPA ID Number NYD0000632312				G. State Facility's ID			
11. US DOT Description (Including Proper Shipping Name, Hazard Class and ID Number)				12. Containers		13. Total Quantity	
				No.	Type	Unit	
						Wt/Vol	
						L. Waste No.	
a. WASTE LITHIUM BATTERIES FOR DISPOSAL (DANGEROUS WHEN WET - FLAMMABLE LIQ) UN-001-C				005	UM	374 P	D003
b. WASTE LITHIUM METAL UN-1415 (DANGEROUS WHEN WET - FLAMMABLE LIQ)				004	UM	75 P	D003
c.							
d.							
J. Additional Descriptions for Materials listed Above				K. Handling Codes for Wastes Listed Above			
a.				<input checked="" type="checkbox"/>	c	<input type="checkbox"/>	
b.				<input checked="" type="checkbox"/>	d	<input type="checkbox"/>	
15. Special Handling Instructions and Additional Information							
16. GENERATOR'S CERTIFICATION: I hereby declare that the contents of this consignment are fully and accurately described above by proper shipping name and are classified, packed, marked and labeled, and are in all respects in proper condition for transport by highway according to applicable international and national governmental regulations and state laws and regulations.							
Printed/Typed Name KENNETH R. FORREST				Signature <i>Kenneth R. Forrest</i>		DATE Month Day Year 08 26 05	
17. Transporter 1 (Acknowledgement of Receipt of Materials)				Signature <i>Mark Burshitsky</i>		DATE Month Day Year 10 12 05	
Printed/Typed Name MARK BURSHITSKY				Signature		DATE	
18. Transporter 2 (Acknowledgement of Receipt of Materials)				Signature		DATE	
Printed/Typed Name				Signature		DATE	
19. Discrepancy Indication Space							
20. Facility Owner or Operator: Certification of receipt of hazardous materials covered by this manifest except as noted in Item 19.							
Printed/Typed Name				Signature		DATE Month Day Year	

GENERATOR

TRANSPORTER

FACILITY

NYA 1388727