



Environment

Submitted to:
The Gillette Company
Bethel, CT

Submitted by:
AECOM
Chestnut Ridge, NY

Citizen Participation Plan

Duracell Inc. Site

Site Code 360011

Village of Sleepy Hollow
Westchester County, New York

April 2011





Environment

Submitted to:
The Gillette Company
Bethel, CT

Submitted by:
AECOM
Chestnut Ridge, NY

Citizen Participation Plan

Duracell Inc. Site

Site Code 360011

Village of Sleepy Hollow
Westchester County, New York

April 2011

Prepared By
Shannon B. Gleason, PE

Reviewed By
Todd Schwendeman, CHMM

Contents

1.0 Introduction and Overview.....	1-1
2.0 Site Background and Project Description.....	2-1
2.1 Prior Conditions and Site Remediation	2-1
2.2 Current Status	2-1
2.3 Project Description.....	2-2
3.0 Citizen Participation Activities	3-1
3.1 Document Repository	3-1
3.2 Mailing List	3-1
3.3 Points of Contact.....	3-1
3.4 Print Media (fact sheets).....	3-2
3.5 Public Notices	3-3
3.6 Public Comment Periods and Comment Responses	3-3
3.7 Meetings.....	3-3
3.8 Telephone Hotline and E-mail Address	3-3

List of Appendices

Appendix A Project Contacts

Appendix B Document Repositories

Appendix C List of Available Documents

Appendix D Potentially Affected/Interested Public (Contact List)

Appendix E Glossary

Appendix F Site Map(s)

1.0 Introduction and Overview

This document presents the Citizen Participation (CP) Plan for the Duracell Inc. Site (Site). The Site, located at 60 Elm Street in the Village of Sleepy Hollow, Westchester County, New York, was home to a battery manufacturing company that operated since the late 1940s before ceasing operations in 1984. The facility was originally operated by the P.R. Mallory Company, which later became Duracell in 1979. The Gillette Company (Gillette) has since acquired Duracell, and the site is currently owned by the Village of Sleepy Hollow.

In January 2010, Gillette and the New York State Department of Environmental Conservation (NYSDEC) entered into an Order on Consent and Administrative Settlement, Index No. W3-1145-09-11, Site No. 360011 (Order) to complete a Remedial Investigation (RI) and Remedial Program at the Site. This Order also required the development of a CP Plan for the Site, in accordance with NYSDEC Program Policy No. 23, the *Citizen Participation Handbook for Remedial Programs*. AECOM, on behalf of Gillette, has prepared this CP Plan in accordance with this Policy.

Gillette, the NYSDEC, and the New York State Department of Health (NYSDOH) are committed to informing and involving the public during the course of the RI and throughout the remedial program for the Site. This Plan describes CP activities to be conducted during the investigation and remedial activities.

2.0 Site Background and Project Description

The Duracell Inc. Site (aka, former Mallory Battery Factory Site) is located at 60 Elm Street in the Village of Sleepy Hollow, Westchester County, New York (see Site Plan contained in **Appendix F**). The Site is the location of the former Duracell manufacturing operations.

The Site is currently owned by the Village of Sleepy Hollow and has been developed into a parking lot. The current Site configuration consists of an asphalt-paved parking area equipped with curbs, landscaped islands, and lighting. The exterior portions of the Site consist of concrete sidewalks and/or grass and landscaped areas. A chain-link fence extends along the eastern and southern property boundaries separating the Site from the adjacent residential properties.

The Site was operated as a battery manufacturing facility from 1945 until operations ceased in 1984. The facility was originally operated by the P.R. Mallory Company, which later became Duracell in 1979. The former manufacturing facility footprint encompassed nearly the entire present day parking lot. Two employee parking areas for the facility occupied portions of the properties located immediately across Elm Street and Andrews Lane, including the new Senior Center and part of the present-day Barnhart Park, respectively. The battery manufacturing facility was decommissioned and demolished in 1990.

2.1 Prior Conditions and Site Remediation

In 1988, Duracell entered into an Order on Consent and Administrative Settlement, Index No. W3-0160-8711, Site No. 360011 (1988 Order), with the NYSDEC to complete an investigation and remediation of on- and off-Site soils. Airborne discharges from former manufacturing facility operations (e.g., exhaust from air handling units, operation and maintenance of cyclones and bag houses used for particulate collection) in the form of mercuric oxide (inorganic salts) were cited as the source of the contamination. An environmental investigation was conducted in 1989, which identified primarily mercury impacted soils on the Site and adjacent properties. The remediation included the excavation and removal of soils on- and off-Site with concentrations of mercury exceeding the Site-specific risk-based remedial goals that were approved by the NYSDEC at the time.

In 1990, approximately 2,100 cubic yards (cy) of mercury-impacted soils were removed from the Site. Subsequent removals of more than 600 cy of impacted soils were completed on eight adjacent residential properties in 1990 and 1991 and, in 1993, 1,600 cy of impacted soils were removed from the former Duracell parking area across Andrews Lane. As per the 1988 Order with the NYSDEC, on-Site and off-Site impacted soils were remediated to the risk-based remedial goals established at that time for the Site. Accordingly, in 1994, the NYSDEC removed the Site from the New York State Registry of Inactive Hazardous Waste Disposal Sites.

2.2 Current Status

In December 2006, the NYSDEC promulgated regulations (6 NYCRR Part 375) which established new Soil Cleanup Objectives (SCOs) for numerous constituents, including mercury and lead. In 2008 a soil sample was collected from a residential property adjacent to and south of the Site and analyzed for metals, as part of a proposed real estate transaction. Mercury was detected in this sample at a concentration in excess of the newly promulgated SCO for inorganic mercury salts. The findings from

the residential sampling event were provided to the NYSDEC and the NYSDOH, which prompted the NYSDEC to initiate a limited residential soil investigation and characterization of background conditions. This work was performed by Aztech Technologies, Inc. under contract to the NYSDEC in May 2009, and included collecting and analyzing soil samples from 37 residential properties and two Village-owned properties, including Barnhart Park. Investigation results indicated that thirty-six (36) of the 39 nearby properties sampled displayed concentrations of total mercury in excess of the current SCOs. Thirty-one (31) of the 39 nearby properties sampled displayed concentrations of total lead in excess of the current SCOs.

2.3 Project Description

In January 2010, The Gillette Company, Inc. (Gillette) entered into an Order on Consent and Administrative Settlement, Index No. W3-1145-09-11, Site No. 360011 (Order) with the NYSDEC to complete a remedial investigation (RI) and remedial program at the Site. Due to its scope, the RI will be performed in phases, with the initial phase focusing on off-Site areas. Interim Remedial Measures (IRMs) will be utilized as necessary during the remedial program to reduce the risk of exposure to Site contaminants. The RI and the remedial program will be performed by Gillette with oversight by the NYSDEC and NYSDOH.

The Phase I RI activities are described in the *Phase I Remedial Investigation Work Plan*, which has been made available for public review at the Document Repositories identified in Appendix B. The Phase I RI will include collecting and analyzing additional soil samples from select properties in the vicinity of the Site, as shown on the Site Plan contained in **Appendix F**. These data will help provide an understanding of current conditions and allow for an assessment of those conditions in light of the more recent SCOs. The data will also provide information necessary to plan the IRM(s). Once the investigation is complete, a *Remedial Investigation Report* will be issued.

As needed, IRM(s) will also be performed by Gillette with oversight by the NYSDEC and NYSDOH. The IRM(s) will entail removal of impacted soil from select locations in the project area.

3.0 Citizen Participation Activities

This section describes the CP program for the Duracell Inc. Site. The program meets the requirements set forth in NYSDEC Program Policy No. 23, the *Citizen Participation Handbook for Remedial Programs*. The program will be implemented by Gillette, with oversight and input from the NYSDEC.

The following paragraphs describe the required or suggested CP activities for use during the project. It is noted that the NYSDEC has already conducted several CP activities; these activities are either complete or will continue to be conducted by Gillette (as elaborated below).

3.1 Document Repository

A document repository is a file of documents pertaining to a site's remedial and citizen participation programs, which is made available for public review. The file is typically maintained in a public building near the site to provide access at times and a location convenient to the public.

The NYSDEC has established three repositories for the Site. These repositories are listed in Appendix B. Gillette will continue to maintain these repositories. All final documents, notices, and fact sheets developed for the Site will be made available to the public in the document repositories.

3.2 Mailing List

The NYSDEC has established a mailing list for the Site (referred to as the Site Contact List), which is comprised of two components:

- Property owners for properties within the RI sampling program, and
- Other interested parties.

The contact information for interested parties (second bullet) is provided in Appendix D; property owner contact information is maintained confidentially in project files.

Gillette will maintain and update the mailing list information regularly throughout the project.

3.3 Points of Contact

The NYSDEC has established points of contact for the public to obtain information about the Site. The public is encouraged to contact any of the New York State project staff listed below.

Technical Information:

Daniel Lanners
NYS Department of Environmental Conservation
Division of Environmental Remediation
625 Broadway, 11th Floor
Albany, NY 12233-7014
1-866-520-2334

Site-Related Health Information:

Fay S. Navratil
NYS Department of Health
Bureau of Environmental Exposure Investigation
547 River Street
Troy, NY 12180-2216
1-800-458-1158 ext. 27880

Citizen Participation:

Michael Knipfing
NYSDEC - Region 3
21 South Putt Corners Road
New Paltz, NY 12561
(845) 256-3154

3.4 Print Media (fact sheets)

Printed communications materials, such as Fact Sheets, are one of several CP tools used to provide information to the community about a project. Fact sheets are typically two to four pages in length, and portray a specific topic of interest in community-friendly (non-technical) terms. Spanish translations of the printed communications materials will also be available to the public.

The NYSDEC has issued three fact sheets for the project (English and Spanish):

- Fact Sheet, Former Duracell Site, Site ID No. 360011, Sleepy Hollow, NY, Recent Developments and Assessment of Current Conditions, March 2009;
- Fact Sheet, Former Duracell Site, Site ID No. 360011, Sleepy Hollow, NY, Public Availability Session Announced, October 21, 2009; and
- Questions and Answer Fact Sheet for Former Duracell Site, Village of Sleepy Hollow, Westchester County, October 2009.

Gillette, in association with the NYSDEC, will issue additional fact sheets (in English and Spanish) for the project as needed or as required by NYSDEC Program Policy. At this time, the following fact sheets have been issued or are anticipated during the next 12 months, based on NYSDEC Program Policy:

- A Fact Sheet discussing the Remedial Investigation Work Plan and Phase I Soil Sampling, August 2010;
- A Fact Sheet announcing completion of the Phase I remedial investigation field activities and public availability session(s); and
- A Fact Sheet discussing the Interim Remedial Measures Work Plan.

Additional fact sheets may contain articles on the status of the environmental study, listings of recently issued documents, and descriptions of study techniques or project milestones. All fact sheets will be reviewed and approved by the NYSDEC before they are provided to the Site's contact list.

3.5 Public Notices

As required by NYSDEC Program Policy, formal public notices will be published to inform stakeholders and community members of certain milestones or events at the Site. Such events include site reclassification or site delisting. These notices will be placed in a local newspaper of general circulation, and will appear in a prominent position in the paper with adequate time for the community to plan participation.

3.6 Public Comment Periods and Comment Responses

If requested by the NYSDEC, the public will be given an opportunity to comment on certain project documents and to receive comment responses from Gillette and the NYSDEC. Under NYSDEC Program Policy, the public would be allowed 30 days to comment on a particular document.

Formal comment response documents would be prepared by Gillette and the NYSDEC, and provided to the public. In this manner, the public will obtain direct feedback on their comments, and will understand how the comments are being incorporated into final decisions being made regarding the Site.

3.7 Meetings

If requested by the NYSDEC, a public meeting could be held. Such meetings would include (as appropriate) posters, exhibits, and displays that give audience members graphic representations of Site activities, environmental findings, or program schedules. These materials will provide perspective to the community on the complexity that surrounds a study of this nature.

If held, the meetings would take place at a convenient and central location to the Site. Meeting times and locations would be determined with input from local community leaders, and will be announced in local newspapers and/or a mailing to the community.

3.8 Telephone Hotline and E-mail Address

Gillette has established a **toll free** telephone number to receive and respond to questions from the public:

(toll free)1-877-410-8412

Alternatively, Gillette has also established an e-mail address for community members to ask a question or transmit a comment in writing:

info@formermallorybatteryfactory.com

Appendix A

Project Contacts

Gillette has established a **toll free** telephone number to receive and respond to questions from the public:

(toll free)1- 877-410-8412

Alternatively, Gillette has also established an e-mail address for community members to ask a question or transmit a comment in writing:

info@formermallorybatteryfactory.com

For additional information about the program, the public is encouraged to contact any of the New York State project staff listed below.

Technical Information:

Daniel Lanners
NYS Department of Environmental Conservation
Division of Environmental Remediation
625 Broadway, 11th Floor
Albany, NY 12233-7014
1-866-520-2334

Site-Related Health Information:

Fay S. Navratil
NYS Department of Health
Bureau of Environmental Exposure Investigation
547 River Street
Troy, NY 12180-2216
1-800-458-1158 ext. 27880

Citizen Participation:

Michael Knipfing
NYSDEC - Region 3
21 South Putt Corners Road
New Paltz, NY 12561
(845) 256-3154

Appendix B

Document Repositories

Three document repositories have been established by the NYSDEC to provide the public with convenient access to important project documents and other information. This information will include reports, data and information gathered and developed during the course of the assessment and evaluation of conditions surrounding the Duracell Inc. Site (the Former Mallory Battery Factory Site). These repositories can be found at the following locations:

Warner Public Library

121 North Broadway

Tarrytown, NY 10591

Contact: Reference Desk

Phone: (914) 631-7734

Hours: Mon. & Thurs. 1:00 pm - 9:00 pm
Tues. & Wed. 10:00 am - 6:00 pm
Fri. & Sat. 10:00 am - 5:00 pm
Sun. 1:00 pm - 5:00 pm

Village of Sleepy Hollow Office

28 Beekman Avenue

Sleepy Hollow, NY 10591

Contact: Village Clerk

Phone: (914) 366-5106

NYSDEC Region 3 Office

21 South Putt Corners Road

New Paltz, NY 12561

Contact: Michael Knipfing

Phone: (845) 256-3154

Hours: Mon. - Fri. 9:00am - 4:45 pm

Appendix C

List of Available Documents

According to the NYSDEC, the following documents are available at the document repositories listed in Appendix B of this CPP:

- Order on Consent W3-0160-8711, dated April 5, 1988.
- Test Cleaning Documentation Report, Eder Associates, January 1987.
- Quality Assurance Plan for Closing the Duracell, Inc. Facility, Eder Associates, January 1988.
- Building Cleaning Documentation Report, Eder Associates, December 13, 1988.
- Certification Report for Closure of the Duracell, Inc. Facility, November 20, 1991.
- Addendum to the Certification Report for Closure of the Duracell, Inc. Facility, Eder Associates, July 22, 1992.
- Addendum No. 2 to the Certification Report for Closure of the Duracell, Inc. Facility, Eder Associates, January 28, 1994.
- Property Owner Delist Notice, June 21, 1994.
- Adjacent Property Owner Delist Notice, July 19, 1994.
- Surface Soil Sampling Work Plan, January 2009.
- Surface Soil Characterization Report, Duracell Inc. Site, March 2010.
- Fact Sheets Related to the Duracell Inc. Site (English and Spanish): Assessment-March 2009; Public Avail. Sessions and Q&A-October 2009.

Gillette (via AECOM) will provide copies of the following documents to the NYSDEC for the document repositories:

- Order on Consent W3-1145-09-11, Site #360011, dated December 22, 2009.
- Citizen Participation Plan, Duracell Inc. Site, April 2011.
- Fact Sheets Related to the Duracell Inc. Site (English and Spanish): August 2010.
- Phase I Remedial Investigation Work Plan, Duracell Inc. Site, August 2010.
- Soil Background Evaluation Work Plan, Duracell Inc. Site, April 2011.

Additional documents not listed above will be placed in the designated repositories as the remedial program for this site develops.

Appendix D

Potentially Affected/Interested Public (Contact List)

The following contact list has been developed by the NYSDEC to help keep the community informed about and involved in the remedial activities relating to the Site. The list includes local, regional and state officials; local media; civic, business and environmental organizations; and others. The contact list will be reviewed periodically and updated as appropriate.

Note: The adjacent/affected property owner and resident portion of the list is maintained confidentially in project files, not in a CP Plan or repositories.

Environmental Groups

Scenic Hudson
1 Civic Center Plaza
Poughkeepsie, NY 12601

Beczak Environmental Center
21 Alexander Street
Yonkers, NY 10701

Clearwater, Inc.
724 Wolcott Avenue
Beacon, NY 12508

Environmental Citizens Coalition
33 Central Avenue
Albany, NY 12210

Greenway Conservancy
Capitol Building
Capitol Station, Rm. 254
Albany, NY 12224

Laura Haight
NYPIRG
107 Washington Ave.
Albany, NY 12210

The Nature Conservancy
Eastern New York Chapter
265 Chestnut Ridge Road
Mt. Kisco, NY 10549

Westchester County EMC
414 Michaelian Office Building
White Plains, NY 10601

Westchester Environmental Coalition
P.O. Box 488
White Plains, NY 10602

Sierra Club - Atlantic Chapter
353 Hamilton Street
Albany, NY 12210-1709

Federated Conservationists of Westchester
78 N. Broadway
White Plains, NY 10603

Robert Funicello
Director of Environmental Projects
Department of Environmental Facilities
270 North Avenue
New Rochelle, NY 10801

Karl Coplan, Esq.
Pace/Riverkeeper
78 N. Broadway
White Plains, NY 10603

Media

City Editor
El Clarin
48 Broadway
Haverstraw, NY 10927

City Editor
Associated Press
148 Martine Ave., CB Press
White Plains, NY 10601

City Editor
Gannett Suburban Newspapers
1 Gannett Drive
White Plains, NY 10604

City Editor
Rising Publications
25 Warburton Ave.
Yonkers, NY 10701

City Editor
Suburban Street News
170 Hamilton Ave., Ste.211
White Plains, NY 10601

City Editor
Tarrytown Daily News
1 Gannett Drive
White Plains, NY 10604

City Editor
The Enterprise
P.O. Box 330
Dobbs Ferry, NY 10522

City Editor-Metro Desk
The New York Times
620 8th Avenue
New York, NY 10018

City Editor
The Business Journal
3 Gannett Drive
White Plains, NY 10604

City Editor
Patent Trader-Journal News
185 Kisco Avenue
Mount Kisco, NY 10549-1409

City Editor
Hometown Media Group
200 William Street
Port Chester, NY 10573

City Editor
Westchester County Press
P. O. Box 152
White Plains, NY 10602

City Editor
Westmore News, Inc.
33 Broad Street
Port Chester, NY 10573

City Editor
Tri-State Pennysaver
510 Fifth Ave.
Pelham, NY 10803

News Director
WHUD/WLNA
P.O. Box 310
Beacon, NY 12508

News Director
WRTN/WVOX
1 Broadcast Forum
New Rochelle, NY 10801

News Director
News 12
6 Executive Plaza
Yonkers, NY 10701

News Director
Paragon Cable
701-717 N. MacQuestein
Mount Vernon, NY 10552

News Director
WRNN TV
800 Westchester Avenue, Ste. S-640
Rye Brook, NY 10573

Lisa Phillips, Bureau Chief
WAMC
318 Central Avenue
Albany, NY 12206-2522

Hank Gross
Mid-Hudson News Network
42 Marcy Lane
Middletown, NY 10941

News Director
Women's E News
6 Barclay Street, 5th floor
New York, NY 10007

News Director
WFAS-AM
P.O. Box 551, 365 Secor Road
Hartsdale, NY 10530

Local Officials

Honorable Kenneth G. Wray, Mayor
Village of Sleepy Hollow
28 Beekman Avenue
Sleepy Hollow, NY 10591

Anthony Giaccio, Administrator
Village of Sleepy Hollow
28 Beekman Ave.
Sleepy Hollow, NY 10591

Thomas Capossella
Village of Sleepy Hollow
28 Beekman Ave.
Sleepy Hollow, NY 10591

Barbara J. Carr
Village of Sleepy Hollow
28 Beekman Ave.
Sleepy Hollow, NY 10591

Evelyn R. Stupel
Village of Sleepy Hollow
28 Beekman Ave.
Sleepy Hollow, NY 10591

David Schroedel
Village of Sleepy Hollow
28 Beekman Ave.
Sleepy Hollow, NY 10591

County Officials

Honorable Alfreda A. Williams
County Board of Legislators
800 Michaelian Office Bldg.
White Plains, NY 10601

Honorable Ken Jenkins, Chair
Westchester County Legislature
800 Michaelian Office Building
White Plains, NY 10601

Karin T. Wompa
Village of Sleepy Hollow
28 Beekman Ave.
Sleepy Hollow, NY 10591

Bruce R. Campbell
Village of Sleepy Hollow
28 Beekman Ave.
Sleepy Hollow, NY 10591

Joseph DeFeo, Superintendent
Dept of Public Works
28 Beekman Avenue
Sleepy Hollow, NY 10591

Joan A. Maybury, Supervisor
Town of Mt. Pleasant
1 Town Hall Plaza
Valhalla, NY 10595

Patricia June Scova, Clerk
Town of Mt. Pleasant
1 Town Hall Plaza
Valhalla, NY 10595

Honorable Robert Astorino, County Executive
Westchester County
148 Martine Avenue
White Plains, NY 10601

Tina Seckerson, Clerk
Westchester County Legislature
800 Michaelian Office Building
White Plains, NY 10601

Timothy Idoni, Clerk
Westchester County
111 Dr. MLK Jr. Blvd.
White Plains, NY 10601

Cheryl Archbald, Commissioner
Westchester County Health Dept.
145 Huguenot St.
New Rochelle, NY 10801

Edward Burroughs, Commissioner
Department of Planning
148 Martine Avenue
White Plains, NY 10601

State Officials

Willie Janeway
Regional Director
NYSDEC Region 3
21 South Putt Corners Road
New Paltz, NY 12561
wcjanewa@gw.dec.state.ny.us

Thomas Rudolph
Regional Engineer
NYSDEC Region 3
21 South Putt Corners Road
New Paltz, NY 12561
trudolph@gw.dec.state.ny.us

Wendy Rosenbach
Public Affairs Officer
NYSDEC Region 3
21 South Putt Corners Road
New Paltz, NY 12561
warosenb@gw.dec.state.ny.us

Edward Moore
NYSDEC Region 3
21 South Putt Corners Road
New Paltz, NY 12561-1620
elmoore@gw.dec.state.ny.us

Alec Ciesluk
NYSDEC Region 3
21 South Putt Corners Road
New Paltz, NY 12561
afcieslu@gw.dec.state.ny.us

John Hsu, Commissioner
Dept. of Public Works
148 Martine Ave.
White Plains, NY 10601

Laurence Gottlieb, Director
Economic Development & Real Estate
148 Martine Avenue
White Plains, NY 10601

Janet Brown
NYSDEC Region 3
21 South Putt Corners Road
New Paltz, NY 12561
jebrown@gw.dec.state.ny.us

Michael J. Knipfing
NYSDEC Region 3
21 South Putt Corners Road
New Paltz, NY 12561
mjknipfi@gw.dec.state.ny.us

Michael Ryan
NYS Dept. of Environmental Conservation
Division of Environmental Remediation
625 Broadway, 11th Floor
Albany, NY 12233-7014
mjryan@gw.dec.state.ny.us

Daniel Lanners
NYS Dept. of Environmental Conservation
Division of Environmental Remediation
625 Broadway, 11th Floor
Albany, NY 12233-7014
drlanner@gw.dec.state.ny.us

Robert Schick
NYS Dept. of Environmental Conservation
Division of Environmental Remediation
625 Broadway, 12th Floor
Albany, NY 12233-7011
rxschick@gw.dec.state.ny.us

George Heitzman
 NYS Dept. of Environmental Conservation
 Division of Environmental Remediation
 625 Broadway, 11th Floor
 Albany, NY 12233-7014
 gwheitzm@gw.dec.state.ny.us

Benjamin Conlon, Esq.
 NYS Dept. of Environmental Conservation
 Division of Environmental Enforcement
 625 Broadway, 14th Floor
 Albany, NY 12233-5500
 bxconlon@gw.dec.state.ny.us

Alali Tamuno, Esq.
 NYSDEC Region 3
 Division of Environmental Enforcement
 100 Hillside Ave., Suite 1W
 White Plains, NY 10603-2860
 amtamuno@gw.dec.state.ny.us

Harold Evans
 NYS Dept. of Environmental Conservation
 625 Broadway
 Albany, NY 12233
 hxevans@gw.dec.state.ny.us

Mary Young
 NYS Dept. of Environmental Conservation
 625 Broadway
 Albany, NY 12233
 mtyoung@gw.dec.state.ny.us

Larry Ennist
 NYS Dept. of Environmental Conservation
 Division of Environmental Remediation
 625 Broadway, 12th Floor
 Albany, NY 12233-7012
 ldennist@gw.dec.state.ny.us

Fay S. Navratil
 NYS Department of Health
 Bureau of Environ. Exposure Investigation
 547 River Street
 Troy, NY 12180-2216
 beei@health.state.ny.us

Charlotte Bethoney
 NYS Department of Health
 Bureau of Environ. Exposure Investigation
 547 River Street
 Troy, NY 12180-2216
 beei@health.state.ny.us

Steven Bates
 NYS Department of Health
 Bureau of Environ. Exposure Investigation
 547 River Street
 Troy, NY 12180-2216
 beei@health.state.ny.us

David Ashton
 NYSDOS
 Division of Coastal Resources
 41 State St.
 Albany, NY 12231-0001

State Elected Officials

State Senator Andrea Stewart-Cousins
 NY State Senate District 35
 28 Wells Avenue, Building 3
 Yonkers, NY 10701

Assemblyman Thomas J. Abinanti
 NY State Assembly District 92
 303 South Broadway, Suite 229
 Tarrytown, NY 10591

Federal Elected Officials

Honorable Charles Schumer
 United States Senate
 313 Hart Senate Building
 Washington, DC 20510

Honorable Kirsten Gillibrand
 United States Senate
 478 Russell
 Washington, DC 20510

Congresswoman Nita Lowey
18th Congressional District
222 Mamaroneck Avenue, Suite 310
White Plains, NY 10605

Other Interested Parties

Reference Desk
Warner Public Library
121 North Broadway
Tarrytown, NY 10591

James F. Hartnett
General Motors LLC
1 General Motors Dr.
Syracuse, NY 13206-1127

Colleen Preston
ENTACT Environmental Services
3129 Bass Pro Dr.
Grapevine, TX 76051

Michael Macagnone
Publisher
141 Centre St.
Mt. Vernon, NY 10552

W.B. King
The Hudson Independent
54 Main St.
Tarrytown, NY 10591

Anna Leggio
11 Elm St.
Sleepy Hollow, NY 10591

Joseph Leggio
7 Hopkins Ln.
Katonah, NY 10536

Elias Boumis
48 Pocantico St., Unit 1
Sleepy Hollow, NY 10591

Donald P. Caetano, Sr.
43 Lawrence Ave.
Sleepy Hollow, NY 10591

Ana Lopez
Westchester Hispanic Coalition
100 College Ave., Apt. 1K
Sleepy Hollow, NY 10591

Mary Jane Shimsky
Community Relations Director
5 West Main St., Ste. 295
Elmsford, NY 10523

Benjamin Craig
18th Congressional District
222 Mamaroneck Ave, Suite 310
White Plains, NY 10605

Peter Quartironi
Tarrytown School District - Central Leadership
Administration Building
200 North Broadway
Sleepy Hollow, NY 10591

John Whysner
Philpse Manor Beach Club
166 Farrington Avenue
Sleepy Hollow, NY 10591
whysner@aol.com

Appendix E

Glossary

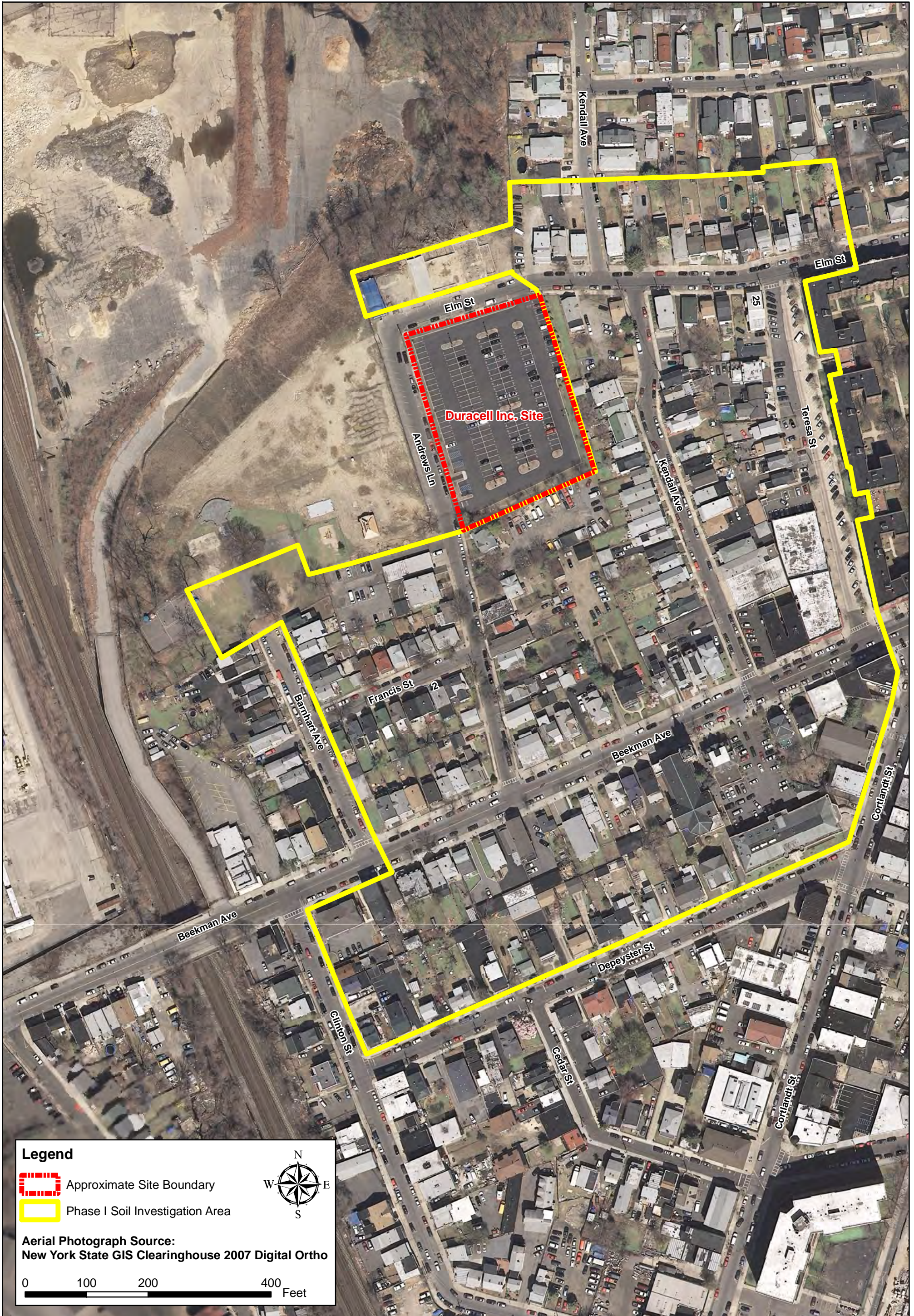
Term	Definition
Availability Session	A scheduled gathering of project staff and members of the public in a casual setting, without a formal presentation or agenda but usually focusing on a specific aspect of a site's remedial process.
Citizen Participation	A program of planning and activities to encourage communication among people affected by or interested in hazardous waste sites and the government agencies and other parties responsible for investigating and remediating them.
Citizen Participation Plan	A document which must be developed at a site's Remedial Investigation stage. A Citizen Participation Plan describes the citizen participation activities that will be conducted during a site's remedial process.
Classification	<p>A process to place a hazardous waste site within a category which defines its hazardous waste status and its threat or potential threat to public health and the environment. Sites are listed along with their classifications in the Registry of Inactive Hazardous Waste Disposal Sites.</p> <p>Class 1 - causing or representing an imminent danger of causing irreversible or irreparable damage to public health or environment -- immediate action required.</p> <p>Class 2 - significant threat to public health or environment -- action required.</p> <p>Class 2a - temporary classification assigned to a site for which there is inadequate or insufficient data for inclusion in any other classification.</p> <p>Class 3 - does not present a significant threat to public health or environment -- action may be deferred.</p> <p>Class 4 - site properly closed -- requires continued management.</p> <p>Class 5 - site properly closed -- no further action required.</p> <p>Delisted - site no longer considered an inactive hazardous waste disposal site.</p>
Comment Period	A period for the public to review and comment about various documents. For example, a 30-day comment period is provided when a Proposed Remedial Action Plan (PRAP) is issued.

Term	Definition
Consent Order	A legal and enforceable agreement negotiated between NYSDEC and a responsible party . The order sets forth agreed upon terms by which a responsible party will undertake site investigation and/or cleanup, or pay for the costs of those activities. The order includes a description of the remedial actions to be taken by the responsible party with NYSDEC oversight, and a schedule for implementation.
Division of Environmental Remediation	Formerly the Division of Hazardous Waste Remediation , a major program unit within the New York State Department of Environmental Conservation created to manage the hazardous waste site remedial program from site discovery through Remedial Action activities. Staff include: engineers, geologists, chemists, attorneys, citizen participation specialists, environmental program specialists and support staff.
Division of Hazardous Waste Remediation	(See Division of Environmental Remediation .)
Document Repository	A file of documents pertaining to a site's remedial and citizen participation programs which is made available for public review. The file generally is maintained in a public building near the hazardous waste site to provide access at times and a location convenient to the public.
Fact Sheet	A written discussion about part or all of a site's remedial process, prepared by DER or the responsible party and provided to the public. A fact sheet may focus on: a particular element of the site's remedial program; opportunities for public involvement; availability of a report or other information, or announcement of a public meeting or comment period . A fact sheet may be mailed to all or part of a site's contact list , distributed at meetings, placed in a document repository and/or sent on an "as requested" basis.
Interim Remedial Measure (IRM)	A discrete action which can be conducted at a site relatively quickly to reduce the risk to people's health and the environment from a well-defined hazardous waste problem.
New York State Department of Health	Agency within the executive branch of New York State government which: performs health-related inspections at suspected hazardous waste sites; conducts health assessments to determine potential risk from environmental exposure; reviews Risk Assessments prepared during the Remedial Investigation and Feasibility Study ; conducts health-related community outreach around sites; and reviews remedial actions to assure that public health concerns are adequately addressed.
New York State Registry of Inactive Hazardous Waste Disposal Sites	The "Registry" Is a document which NYSDEC is directed by law to maintain and which lists and provides information about every hazardous waste site in New York State which meets criteria established through a definition of hazardous waste and a classification system.



Term	Definition
NYSDEC Project Manager	An NYSDEC staff member within the Division of Environmental Remediation (usually an engineer, geologist or hydro geologist) responsible for the day-to-day administration of remedial activities at, and ultimate disposition of, a hazardous waste site. The Project Manager works with legal, health, citizen participation and other staff to accomplish site-related goals and objectives.
Public Meeting	A scheduled gathering of Division of Environmental Remediation staff and responsible party staff with the affected/interested public to give and receive information, ask questions and discuss concerns about a site's remedial program. Staff from other NYSDEC divisions, and legal and health staff often also attend. A public meeting, unlike an availability session , generally features a formal presentation and a detailed agenda.
Reclassification	A process by which DER redefines the threat posed by a hazardous waste site to public health and the environment by developing and assessing site information and, based on findings and conclusions, assigning a new classification code.
Responsible Party	An individual or business who: currently owns or operates a hazardous waste site; or historically owned or operated a site when hazardous waste was disposed; or generated hazardous waste at a site; or transported hazardous waste to a site.
Responsiveness Summary	A written summary of major oral and written comments received during a comment period about key elements of a site's remedial program, such as a Proposed Remedial Action Plan , and DER's response to those comments.
Toll-Free "800" Number	An information line maintained by the Division of Environmental Remediation to provide convenient access for people who have questions, concerns or information about hazardous waste sites and their remedial programs.

Appendix F

Site Map(s)

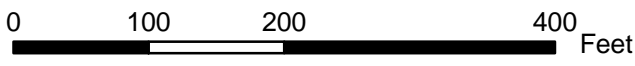


Legend

-  Approximate Site Boundary
-  Phase I Soil Investigation Area



Aerial Photograph Source:
New York State GIS Clearinghouse 2007 Digital Ortho



DURACELL INC. SITE
60 ELM STREET
VILLAGE OF SLEEPY HOLLOW,
NEW YORK

SITE PLAN

DATE: 08/2010