



Handwritten signature: Terry

Crossroads Corporate Center
One International Boulevard
Suite 700
Mahwah, NJ 07495-0086
Tel. 201.512.5700
Fax. 201.512.5786

January 31, 2000
Project 791158

Mr. Gerald Rider
NYS Department of Environmental Conservation
Bureau of Construction Services
Division of Hazardous Waste Remediation
50 Wolf Road
Albany, NY 12233-7010

Handwritten note: T-6.1.4

Handwritten note: TEP - 4 2000

Re: November 1999 Semi-annual Monitoring Results, Taylor's Lane Compost Site
Mamaroneck, New York
NYSDEC Site Number 360021

Dear Mr. Rider:

On November 18, 1999, six groundwater monitoring wells (MW-1D, MW-1S, MW-2D, MW-2S, MW-3D and MW-3S) located along Taylor Lane were purged and sampled for target compound list (TCL) volatile organics, pesticides/PCBs and select metals (arsenic, cadmium, copper, lead, mercury and zinc).

In addition to the groundwater sampling, landfill gas vent monitoring was also performed on November 18, 1999. The additional monitoring was performed in accordance with the Post Closure Operation and Maintenance Plan for the Taylor's Lane Compost Site prepared by EMCON/Wehran-New York, Inc. in February 1998. The gas vents GV-1 through GV-8 were monitored for percent combustible gas and total organic vapors.

RESULTS OVERVIEW

The analytical laboratory data summary package for the groundwater samples collected in November is enclosed and the results from both the groundwater sampling and gas monitoring are discussed below.

GROUNDWATER MONITORING RESULTS

A review of the groundwater analytical results indicate that an estimated concentration of vinyl chloride (6 ug/l) was detected at a level greater than the NYSDEC's Part 703 Groundwater Standard in MW-2S. Additionally, an estimated concentration of 1,2-dichloroethene (1 ug/l) was reported for MW-2S. A review of the data shows that no other volatile organic compounds were detected in groundwater samples collected from the site.

For inorganic constituents, only copper and lead (both in MW-3S) were detected at concentrations above the Part 703 standards. Historical sampling results for MW-3S indicates that these two constituents continue to be detected above and below the established Part 703 standard. No other inorganic constituents were identified above the Part 703 standards.

Results obtained from the November semi-annual sampling event were similar to the previous semi-annual monitoring event performed in May 1999. Pesticides and PCBs were not detected in the groundwater samples during the November semi-annual monitoring event.

GAS VENT MONITORING RESULTS

For the gas vent monitoring in GV-1 through GV-8, a MiniRae PID was used to monitor for fugitive VOCs and a Landtec GEM-500 was used to monitor for combustible gas. The gas vent locations can be referenced on the Record Plan, Drawing No. 1, included with the February 1998 Post Closure Operation and Maintenance Plan.

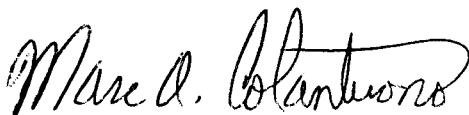
Volatile organic vapors were not detected in any of the gas vents, and methane gas (2.9%) was only detected at GV-5.

Based upon the December monitoring results for the landfill gas vents, gas vent monitoring will continue during the May 2000 sampling event.

If you should have any questions regarding the above information, please do not hesitate to contact us.

Sincerely,

ORGANIC WASTE TECHNOLOGIES, INC.



Marc A. Colantuono
Environmental Scientist
The IT Group O&M Division

Attachments

cc: Susan Lasdin - NYSDEC
Michael Blau – Village of Mamaroneck
Mark Swyka – EMCON/IT

**Village of Mamaroneck
Taylor's Lane Compost Site Closure
November 17, 1997**

PROJECT HISTORY

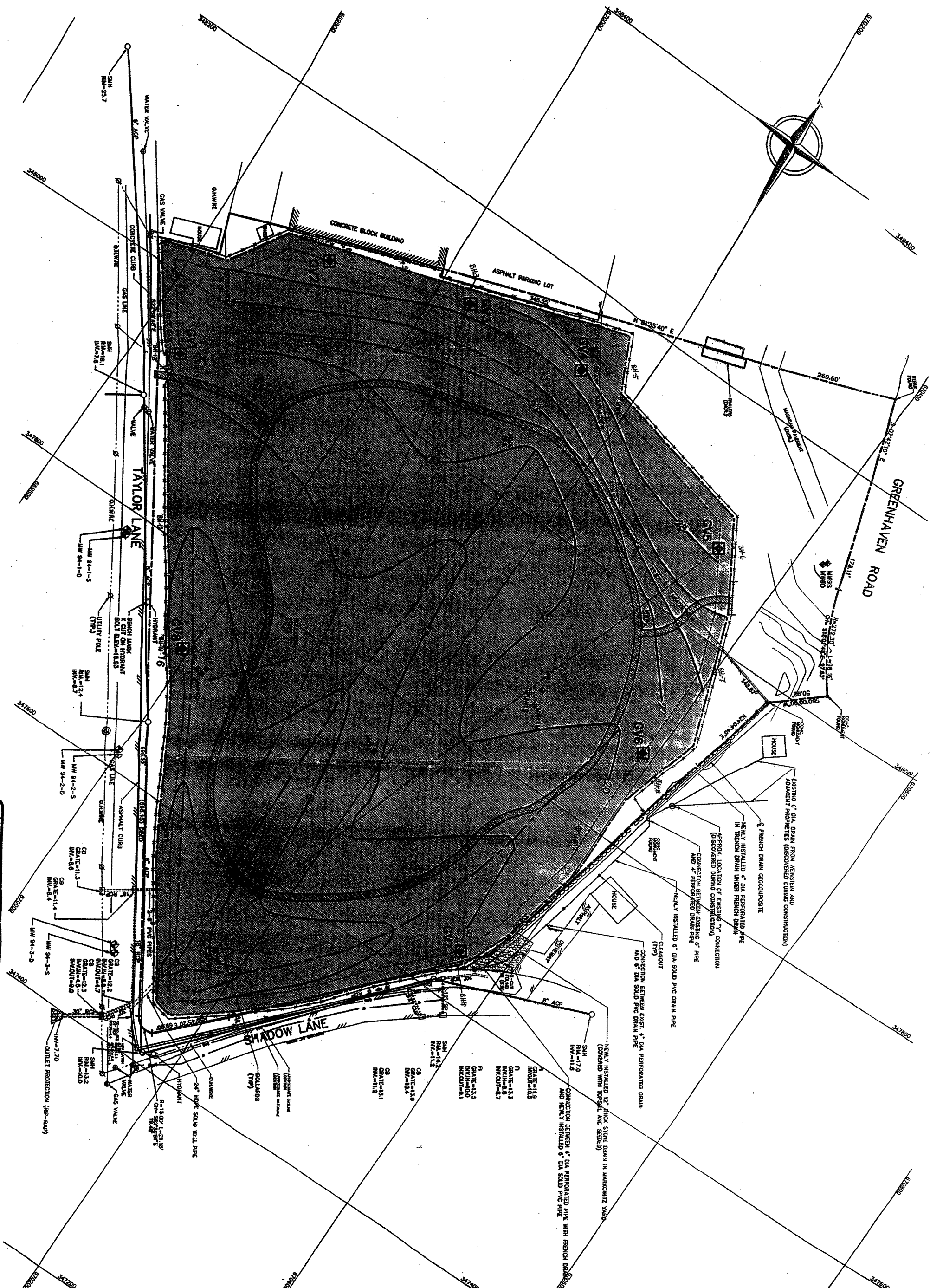
- The Taylor's Lane Compost Site located to the East of Route 1 and North of Taylor Lane in the Village of Mamaroneck, New York, was classified by New York Department of Environmental Conservation (NYSDEC) as an In-active Hazardous Waste Site.
- Site was initially listed in May 1988.
- Remedial Investigation/Feasibility Study completed by Malcolm Pirnie April 1993.
- Record of Decision (ROD) issued by NYSDEC on December 1993.
- Remedial Design completed by EMCON/Wehran-New York, Inc. on May 30th 1995 and approved by NYSDEC June 9th 1995.
- Remedial construction performed by Breco Mechanical Group of Yonkers, New York. Construction initiated on August 28th 1995 and completed on June 12th 1997.
- Construction accepted by NYSDEC in October 1997.

COMPONENTS OF CLOSURE

- The primary feature of the Taylor's Lane site closure is an impermeable final cover. This final cover consists of a venting layer, High Density Polyethylene Geomembrane, 30-inches of cover soil, and storm drainage improvements.

0
40
80

VILLAGE OF MAMARONECK
TAYLOR'S LANE COMPOST SITE



- LEGEND**
- SMH = SANITARY SEWER MANHOLE
 - CB = CATCH BASIN
 - R = RAIN GUTTER
 - ROP = REINFORCED CONCRETE PIPE
 - AP = ASBESTOS CEMENT PIPE
 - CP = CORRUGATED METAL PIPE
 - VP = WIREPIED C.I. PIPE
 - SP = STEEL PIPE
 - MM-1 = MONITORING E.C.
 - S.W. = STONE WALL
 - V.P. = VEGETATIVE ZONE FILE
 - U.P. = UTILITY POLE
 - P.D. = PROPERTY LINE
 - T.M.C. = TRIANGULAR SHED-ROOF CHANNEL
 - G.V. = GAS VENTING PIPE
 - G.V. = GAS VENTING PIPE
 - L.O. = LIMIT OF FINAL COVER
 - ◆ = GAS VENT
 - ◆ = MONITORING E.C. ABANDONED
 - = FENCE AROUND GAS MONITORING (TYP)
 - = FINAL COVER AGE
 - = WALK TRAIL
- NOTES:**
1. NORTH REFERENCE IS BASED ON T.L. MAP #3100.
 2. BOUNDARY INFORMATION SHOWN HEREON IS AS TAKEN FROM A FIELD SURVEY CONDUCTED BY THE ENGINEER IN APRIL 1997.
 3. TOPOGRAPHIC INFORMATION SHOWN HEREON IS BASED UPON A GROUND SURVEY CONDUCTED BY THE ENGINEER IN APRIL 1997.
 4. VERTICAL DATUM USED ON THIS PLAN IS SEA LEVEL DATUM OF 1929.
 5. EASEMENTS OR RIGHT-OF-WAYS ARE SHOWN UNDER THE LINES, AND NOT VISIBLE, ARE NOT SHOWN.
 6. GRID COORDINATES SHOWN HEREON ARE BASED UPON NEW YORK STATE PLANE COORDINATE SYSTEM.
 7. FINAL COVER DRAINAGE PIPES TO BE ALONG THE ST. ALBION AS THE TRAVELER TRAVEL CHAIN.
 8. DRAINAGE INFORMATION FOR THESE PROJECT OBTAINED FROM OWNER AND NOT VERIFIED BY RECONSTRUCTION FROM EXISTING RECORDS.
- MAP REFERENCE:**
1. "REVISED MAP OF FIRST ANTIQUITY TO GREENHAVEN, AS FILED ON 2/26/97 IN WESTCHESTER COUNTY CLERK'S OFFICE AS MAP #3100."
 2. "MAP #4000, AS FILED ON 11/14/95 IN WESTCHESTER COUNTY CLERK'S OFFICE."