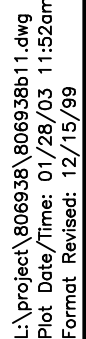


Date: 08 Feb 02 09:25:50 Friday  
 /usr3/hastings/drc.map



Location Map  
 NYSDEC Harbor at Hastings Site  
 Hastings - on - Hudson, New York





## 54

— — — — — APROXIMATE SITE BOUNDARY

APPROXIMATE SITE BOUNDARY

— -5 — — DEPTH TO CONTAMINATION CONTOUR

**A**  
**B**  
**C**  
**D**  
**E**

SEPARATE PHASE LIQUID RECOVERY IRM

NORTHWEST CORNER IRM

SOUTHWEST CORNER BULKHEAD IRM

BUILDING 57 SHORELINE IRM

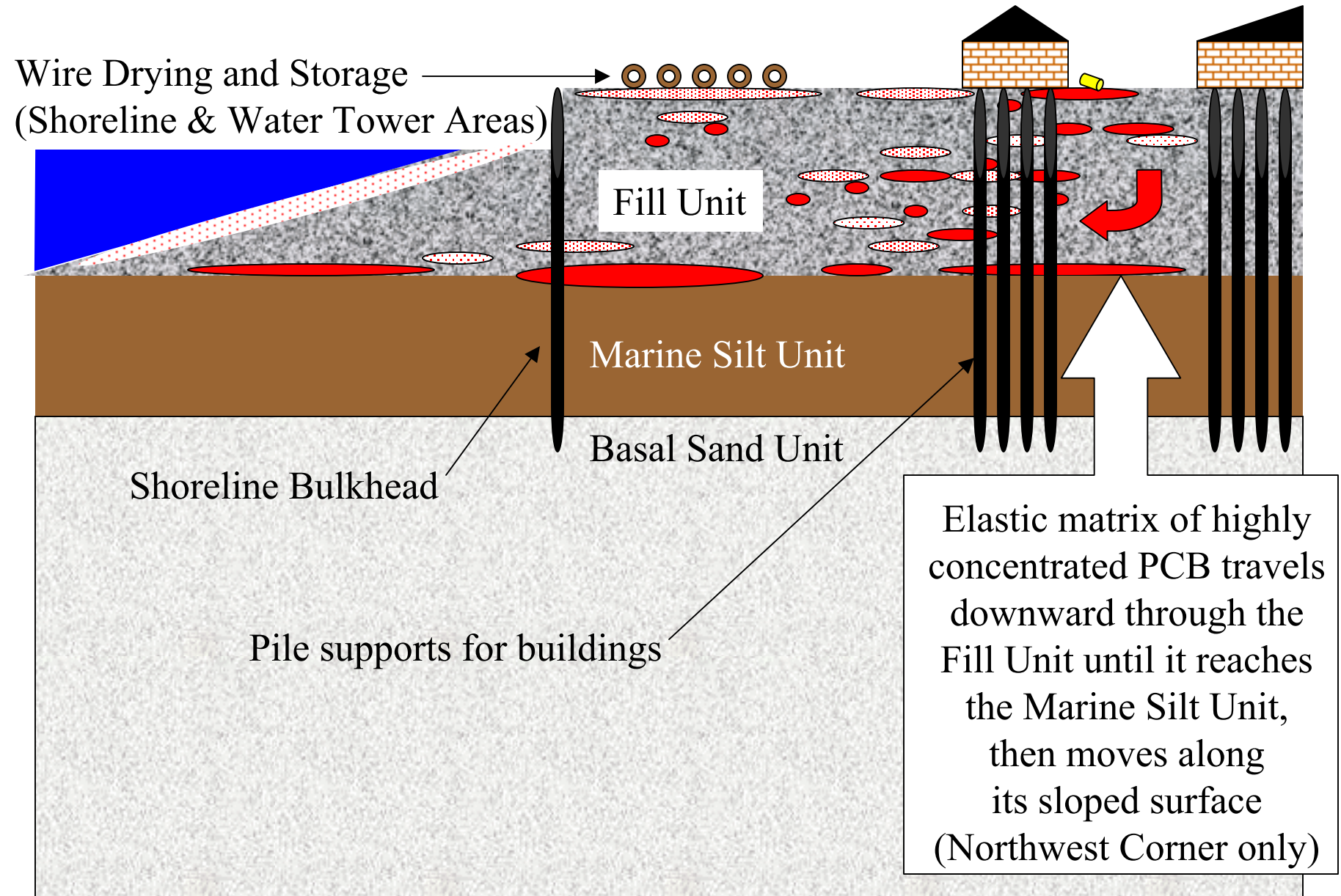
1. TOPOGRAPHY AND PLANIMETRICS PROVIDED BY GEOD PHOTOGRAMMETRIC SCIENCES SURVEY TECHNOLOGIES. MAPPED BY PHOTOGRAMMETRIC METHODS FROM AERIAL PHOTOGRAPHS TAKEN 12-08-1995. GRIDS BASED ON NEW YORK 1988 STATE PLANE COORDINATE SYSTEM. VERTICAL DATUM IS BASED ON NAD 1983. RI SAMPLE LOCATIONS SURVEYED BY GEOD.
2. EXISTING BUILDING DESIGNATIONS ARE BASED ON DOLPH ROTTFELD ASSOCIATES FIGURE 4, DATED NOVEMBER 1996. BUILDING INTERIOR DIVISION LOCATIONS ARE APPROXIMATE ONLY.

ATLANTIC RICHFIELD  
COMPANY

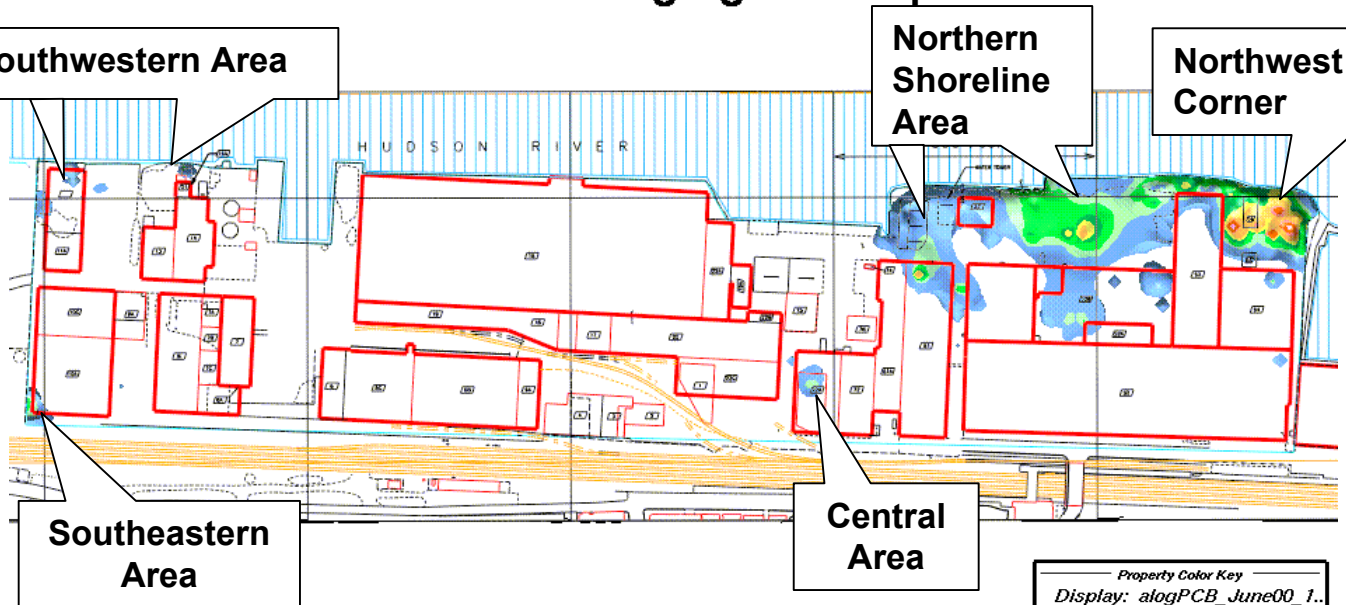
FIGURE 2

SITE AREA MAP  
HARBOR AT HASTINGS  
HASTINGS-ON-HUDSON, NEW YORK

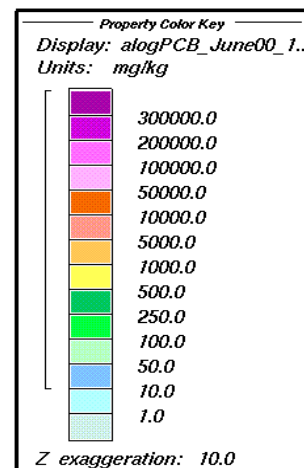
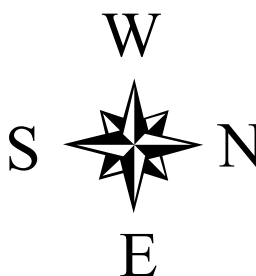
# Figure 3: Conceptual Model of PCB Migration



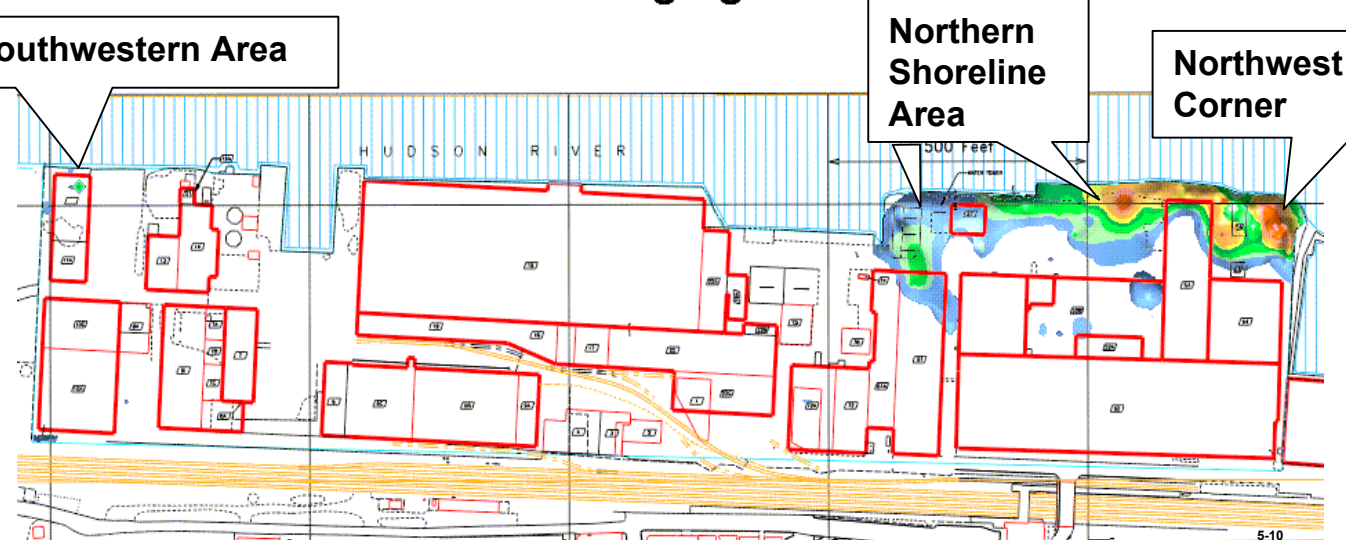
# PCBs in Fill Concentrations > 10 mg/kg at a Depth of 1 Foot



**Figure 4A:**  
Extent of PCBs in Soil  
(1 foot and 6 feet Deep)

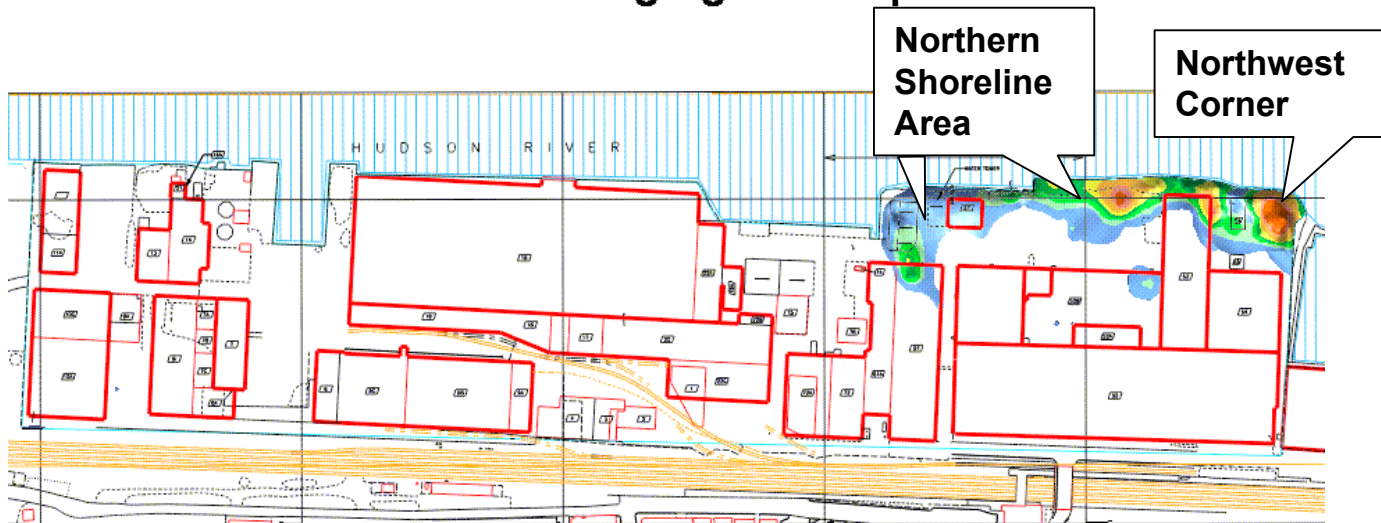


# PCBs in Fill Concentrations > 10 mg/kg at a Depth of 6 Feet

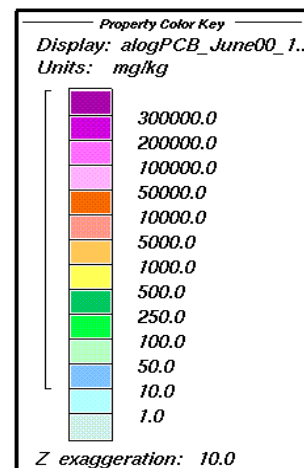
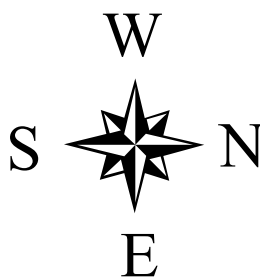




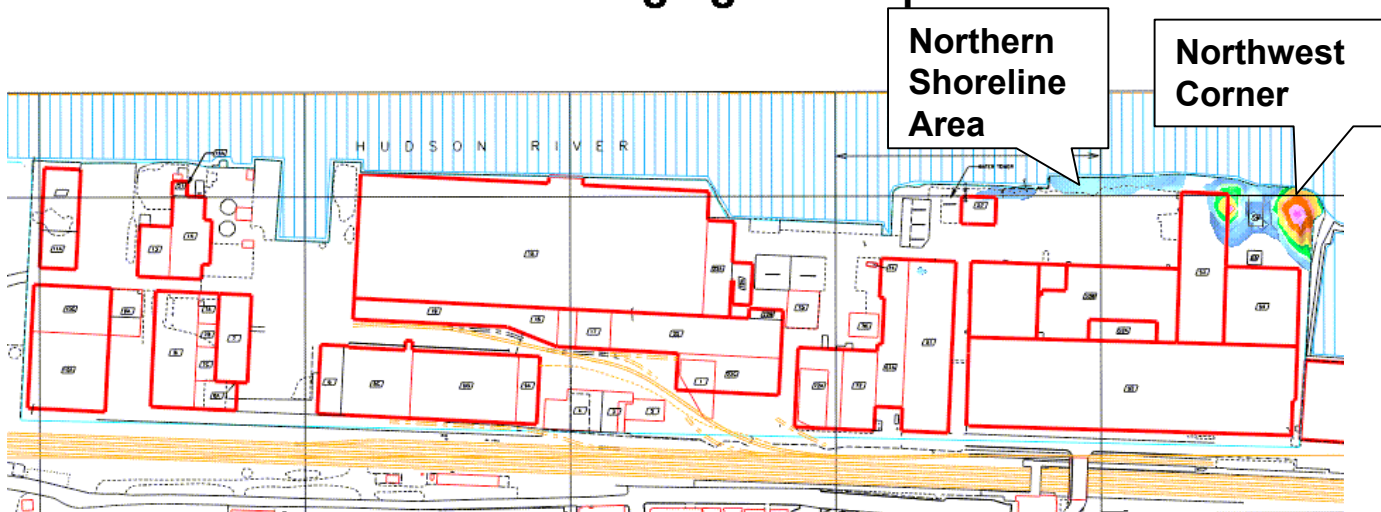
# PCBs in Fill Concentrations > 10 mg/kg at a Depth of 10 Feet



**Figure 4B:**  
Extent of PCBs in Soil  
(10 feet and 20 feet Deep)



# PCBs in Fill Concentrations > 10 mg/kg at a Depth of 20 Feet



## PCBs in Fill Concentrations > 10 mg/kg at a Depth of 30 Feet

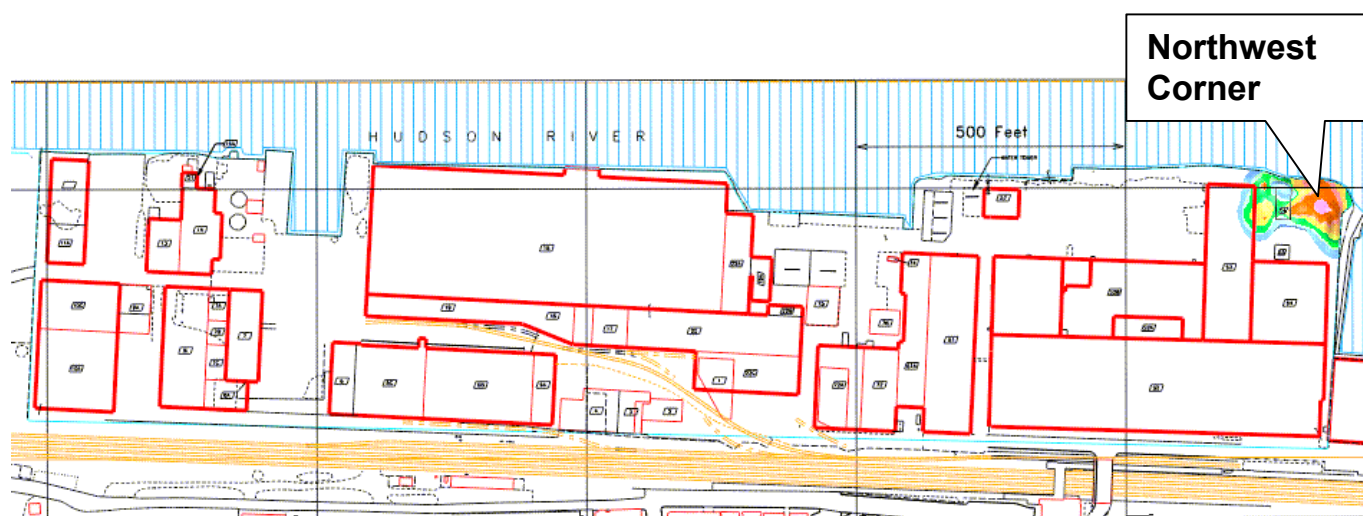
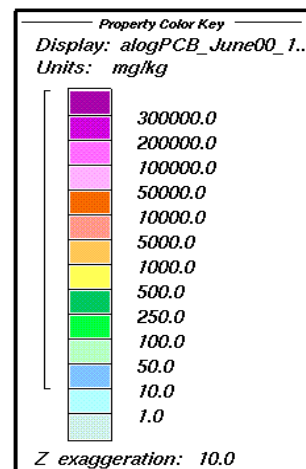
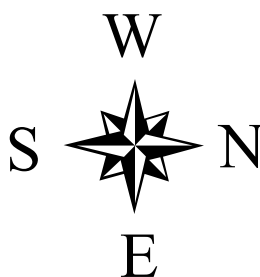
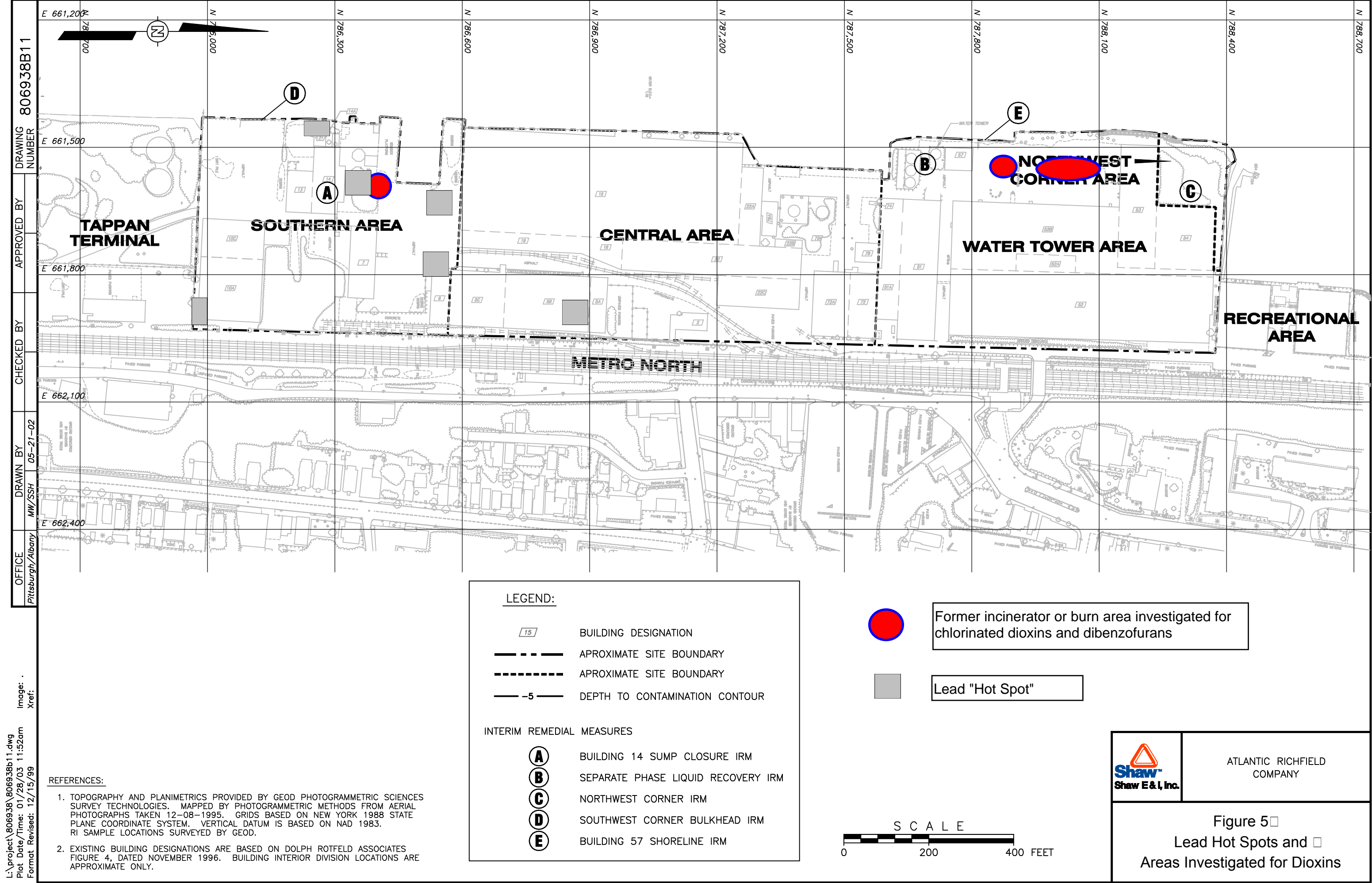


Figure 4C:  
Extent of PCBs in Soil  
(30 feet Deep)





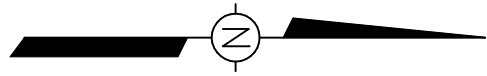
PROJECT: 806938B11.dwg  
Plot Date/Time: 01/28/03 11:52am  
Format Revised: 12/15/99

OFFICE: Pittsburgh/Albany  
DRAWN BY: MW/SSH  
CHECKED BY: 05-21-02  
APPROVED BY: 806938B11  
DRAWING NUMBER

ATLANTIC RICHFIELD COMPANY

Figure 5

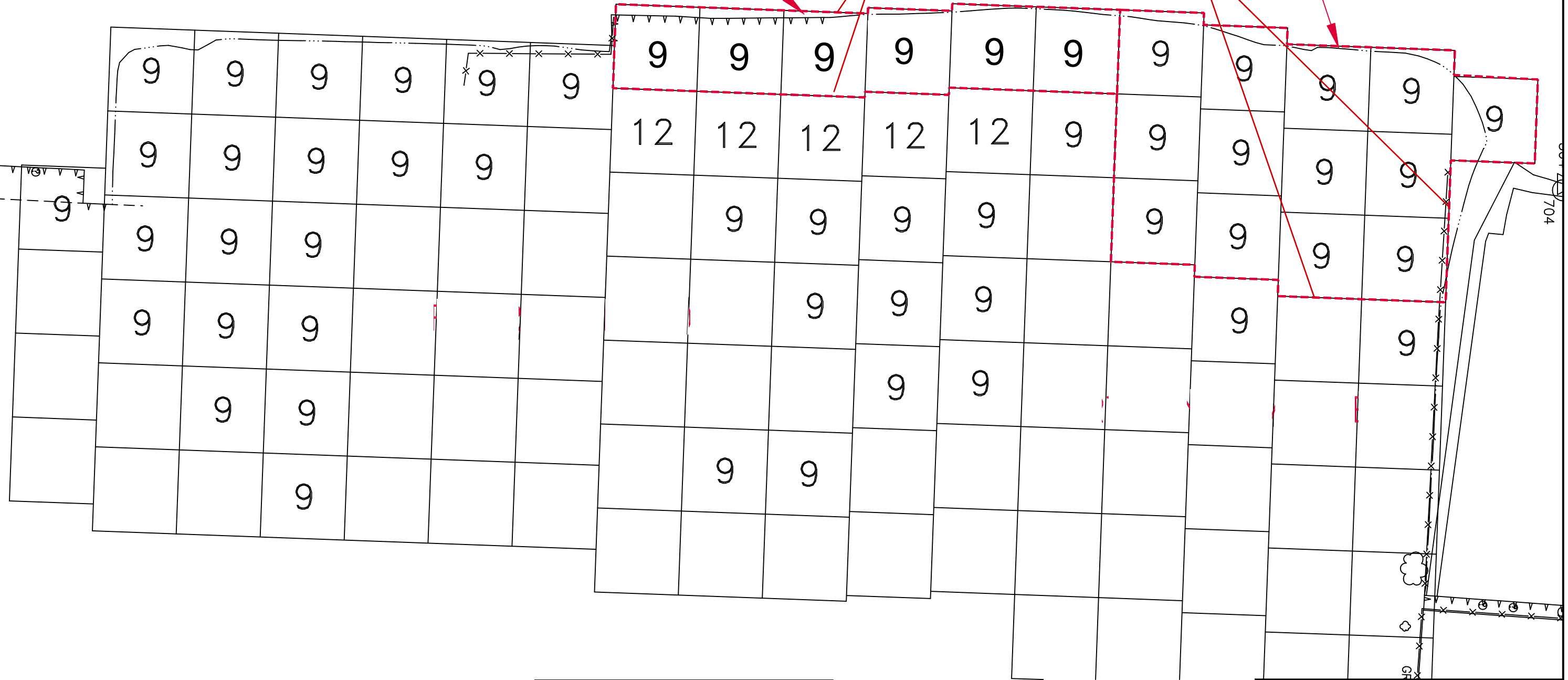
Lead Hot Spots and Areas Investigated for Dioxins



SHORELINE AREA

NORTHWEST CORNER

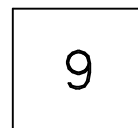
PERIMETER OF  
CONTAINMENT CELL



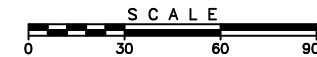
**REFERENCE:**

TOPOGRAPHY AND PLANIMETRICS PROVIDED BY GEOD PHOTOGRAMMETRIC SCIENCES  
 SURVEY TECHNOLOGIES. MAPPED BY PHOTOGRAMMETRIC METHODS FROM AERIAL  
 PHOTOGRAPHS TAKEN 12-08-1995. GRIDS BASED ON NEW YORK 1988 STATE  
 PLANE COORDINATE SYSTEM. VERTICAL DATUM IS BASED ON NAD 1983.  
 RI SAMPLE LOCATIONS SURVEYED BY GEOD.

**LEGEND:**



EXCAVATION DEPTH



ARCO

Figure 6  
 Alternative 12C - Northern End

HARBOR AT HASTINGS  
 HASTINGS-ON-HUDSON, NEW YORK