

1:24,000



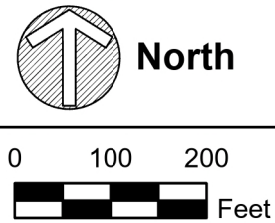
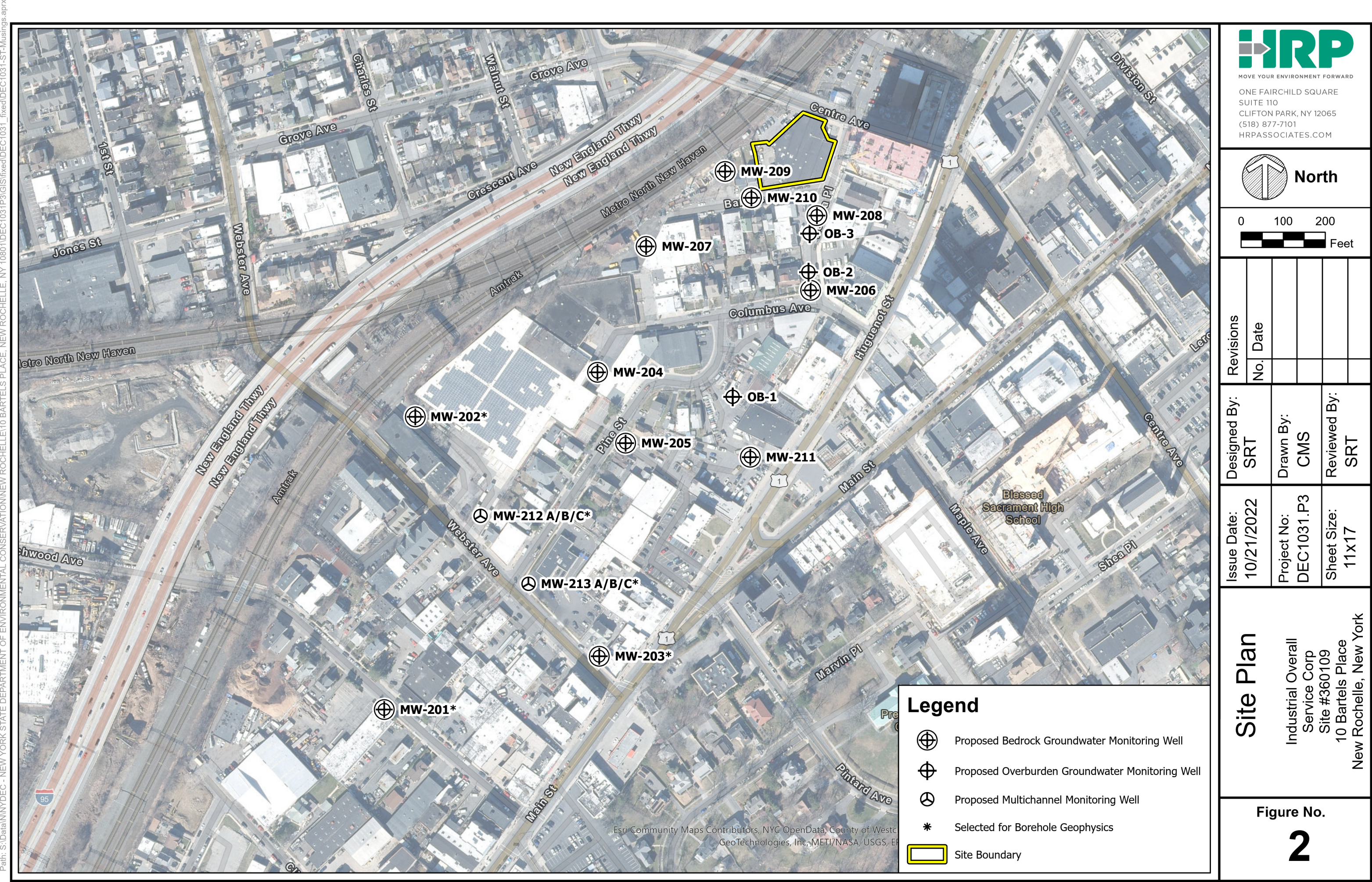
**Figure 1**  
**Site Location**  
**Industrial Overall Service Corp.**  
**Site #360109**  
**10 Bartels Place**  
**New Rochelle, New York**  
**HRP # DEC1031.P3**  
**Scale 1" = 2,000'**

USGS Quadrangle Information  
Quad ID: 40073-H7  
Name: Mount Vernon, New York  
Date Rev: 1976  
Date Pub: 1979



ONE FAIRCHILD SQUARE  
SUITE 110  
CLIFTON PARK, NY 12065  
(518) 877-7101  
HRPASSOCIATES.COM










Revisions	No.	Date	Designed By: SRT	Drawn By: CMS	Reviewed By: SRT
Issue Date:	10/21/2022		Project No:	DEC1031.P3	
Sheet Size:	11x17				

**Site Plan**

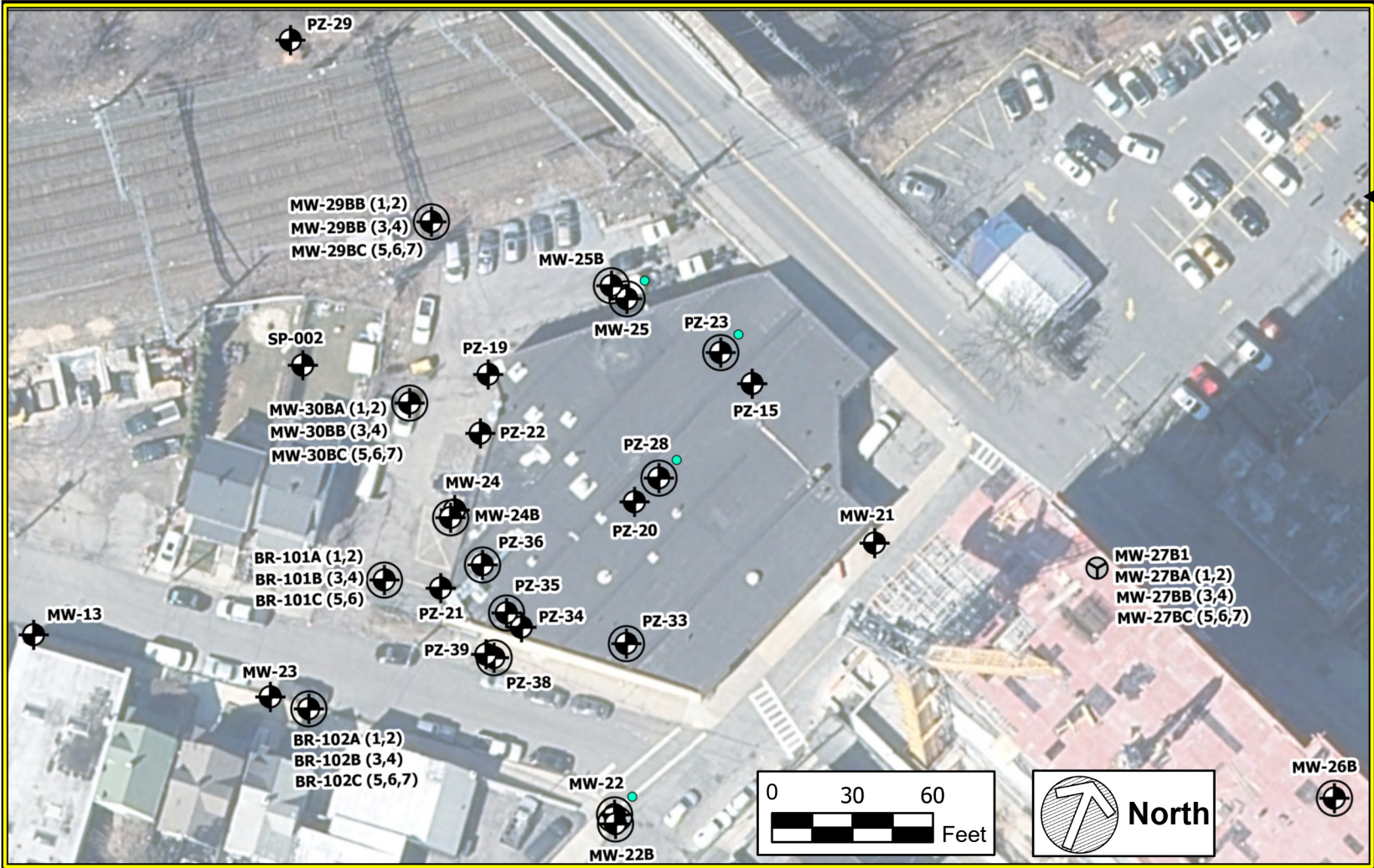
Industrial Overall  
Service Corp  
Site #360109  
10 Bartels Place  
New Rochelle, New York

**Figure No.**  
**2**

**Legend**

-  Proposed Bedrock Groundwater Monitoring Well
-  Proposed Overburden Groundwater Monitoring Well
-  Proposed Multichannel Monitoring Well
-  Selected for Borehole Geophysics
-  Site Boundary





### Legend

- Bedrock Groundwater Monitoring Well
- Overburden Groundwater Monitoring Well
- Nested Bedrock/Overburden Monitoring Well
- Multichannel Monitoring Well
- Monitoring Well of Unknown Construction

MOVE YOUR ENVIRONMENT FORWARD

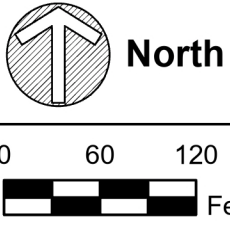
ONE FAIRCHILD SQUARE  
SUITE 110  
CLIFTON PARK, NY 12065  
(518) 877-7101  
HRPASSOCIATES.COM

North

0 200 400  
Feet

Revisions	No.	Date			
Designed By:	SRT		Drawn By:	CMS	
Issue Date:	09/13/2022		Project No:	DEC1031.P3	
			Sheet Size:	11x17	
Existing Groundwater Monitoring Wells					
Industrial Overall Service Corp Site #360109 10 Bartels Place New Rochelle, New York					
Figure No. <b>3</b>					





Issue Date: 09/13/2022	Designed By: SRT	Revisions	
		No.	Date
Project No: DEC1031.P3	Drawn By: CMS		
Sheet Size: 11x17	Reviewed By:		

## Proposed SVI Evaluation

Industrial Overall  
Service Corp  
Site #360109  
10 Bartels Place  
New Rochelle, New York

**Figure No.**  
**4**