



Department of  
Environmental  
Conservation

## Where to Find Information

Access project documents through the DECinfo Locator and at these location(s):

<https://www.dec.ny.gov/data/DecDocs/360165/>

<https://www.dec.ny.gov/data/DecDocs/V00565/>

If you cannot access the online repository, please contact the NYSDEC project manager for assistance)

Town of Pelham  
Public Library  
530 Colonial Avenue  
Pelham, NY 10803  
(914) 738-1234

## Who to Contact

Comments and questions are welcome and should be directed as follows:

## Project-Related Questions

John Spellman  
NYSDEC  
625 Broadway  
Albany, NY 12233-7014  
[john.spellman@dec.ny.gov](mailto:john.spellman@dec.ny.gov)

## Project-Related Health Questions

Stephanie Selmer  
NYSDOH  
Bureau of Env. Exposure Inv.  
ESP Corning Tower, Room 1787  
Albany NY 12237  
(518) 402-7860  
[bee@health.ny.gov](mailto:bee@health.ny.gov)

For more information about New York's State Superfund Program visit:

[www.dec.ny.gov/chemical/8430.html](http://www.dec.ny.gov/chemical/8430.html)

# FACT SHEET

Manufactured Gas Plant Program

CE – Pelham MGP Offsite  
4325 Boston Post Road  
Pelham Manor, NY 11144

May 2022

SITE No. 360165  
NYSDEC REGION 3

## Remedy Proposed for Former Manufactured Gas Plant Site; Public Comment Period Announced

The public is invited to comment on a remedy being proposed by the New York State Department of Environmental Conservation (NYSDEC) in consultation with the New York State Department of Health (NYSDOH) to address contamination related to the CE – Pelham MGP (Manufactured Gas Plant) Offsite site ("site") located at 4325 Boston Post Road, Pelham Manor, New York, Westchester County. Please see the map for the site location.

**How to Comment:** NYSDEC is accepting written comments about the proposed plan for 30 days, from May 18, 2022 through June 19, 2022.

- Access the Remedial Investigation, Alternatives Analysis Report and other project documents online through the DECinfo Locator: <https://www.dec.ny.gov/data/DecDocs/360165/>
- Documents also are available at the location(s) identified at left under "Where to Find Information."
- Please submit comments to the NYSDEC project manager listed under Project-Related Questions in the "Who to Contact" area at left.

The site is the subject of an Order on Consent between Consolidated Edison Company of New York Inc. (Con Edison) and the NYSDEC.

**Alternatives Analysis Report and Remedial Action Work Plan:** The proposed Restricted Use remedy consists of:

- Installation of wells to allow for the observation and collection of coal tar in the groundwater;
- Establishment of a Site Management Plan that will detail the soil handling procedure in the event of future excavations and detail a long-term monitoring program; and,
- Recording of an environmental easement that will limit the use of the property to commercial and industrial uses consistent with local zoning, restrict the use of site groundwater and require compliance with the site management plan.

# MGP PROGRAM

The proposed remedy was developed by Con Edison after performing a detailed investigation of the site under New York's Manufactured Gas Plant Program. A "Remedial Investigation Report" which describes the results of the site investigation is also available for review at the locations identified on Page 1.

**Next Steps:** NYSDEC will consider public comments and issue a final Decision Document. NYSDOH must concur with the proposed remedy. After approval, the proposed remedy becomes the selected remedy. A detailed design of the selected remedy will then be prepared, and the cleanup will be performed.

NYSDEC will keep the public informed throughout the investigation and cleanup of the site.

**Site Description:** The CE – Pelham MGP Offsite site is located on the north side of the Boston Post Road approximately one-tenth mile west of the intersection of Boston Post Road and the Hutchinson River Parkway. The 21-acre site includes an active distribution facility and construction equipment storage yards. The site is flat and consists mainly of a paved or gravel surface. The Eastchester Creek flows along the north/northwestern edge of the site.

Additional site details, including environmental and health assessment summaries, are available on NYSDEC's Environmental Site Remediation Database (by entering the site ID, 360165) at:

<http://www.dec.ny.gov/cfm/external/index.cfm?pageid=3>

**Summary of the Investigation:** The CE – Pelham MGP Offsite site is adjacent to the former Pelham Manufactured Gas Plant Site (NYSDEC site number V00110) that operated from the late 1800s through 1951. Investigation of the CE – Pelham MGP Offsite site reveals coal tar, a byproduct of the MGP process, in the soil and groundwater associated with the former MGP. The soil and groundwater contamination were found in the southeastern portion of the site. Components of the

coal tar include volatile organic compounds and polycyclic aromatic hydrocarbons, a class of semi-volatile organic compounds. An investigation of Eastchester Creek found minor impacts (requiring no remediation) from the MGP, in a limited area and lying within deeper, stable sediment. In 2017 the NYSDEC determined the remediation of site V00110 was complete, and site V00110 is currently in a long-term monitoring and maintenance program.

**Manufactured Gas Plant Program:** New York's MGP program oversees the investigation and cleanup of former manufactured gas plants. The gas manufacturing process involved the heating of coal or petroleum products to produce a gas mixture. Once cooled and purified, the gas was distributed through a local pipeline network. The gas was used for heating and cooking in much the same way that natural gas is used today. In early years, the gas was also used for lighting in homes and streetlights.

For more information about NYSDEC's MGP program, visit:

<http://www.dec.ny.gov/chemical/8430.html>

---

*We encourage you to share this fact sheet with neighbors and tenants, and/or post this fact sheet in a prominent area of your building for others to see.*

---

## Stay Informed With DEC Delivers

Sign up to receive site updates by email:

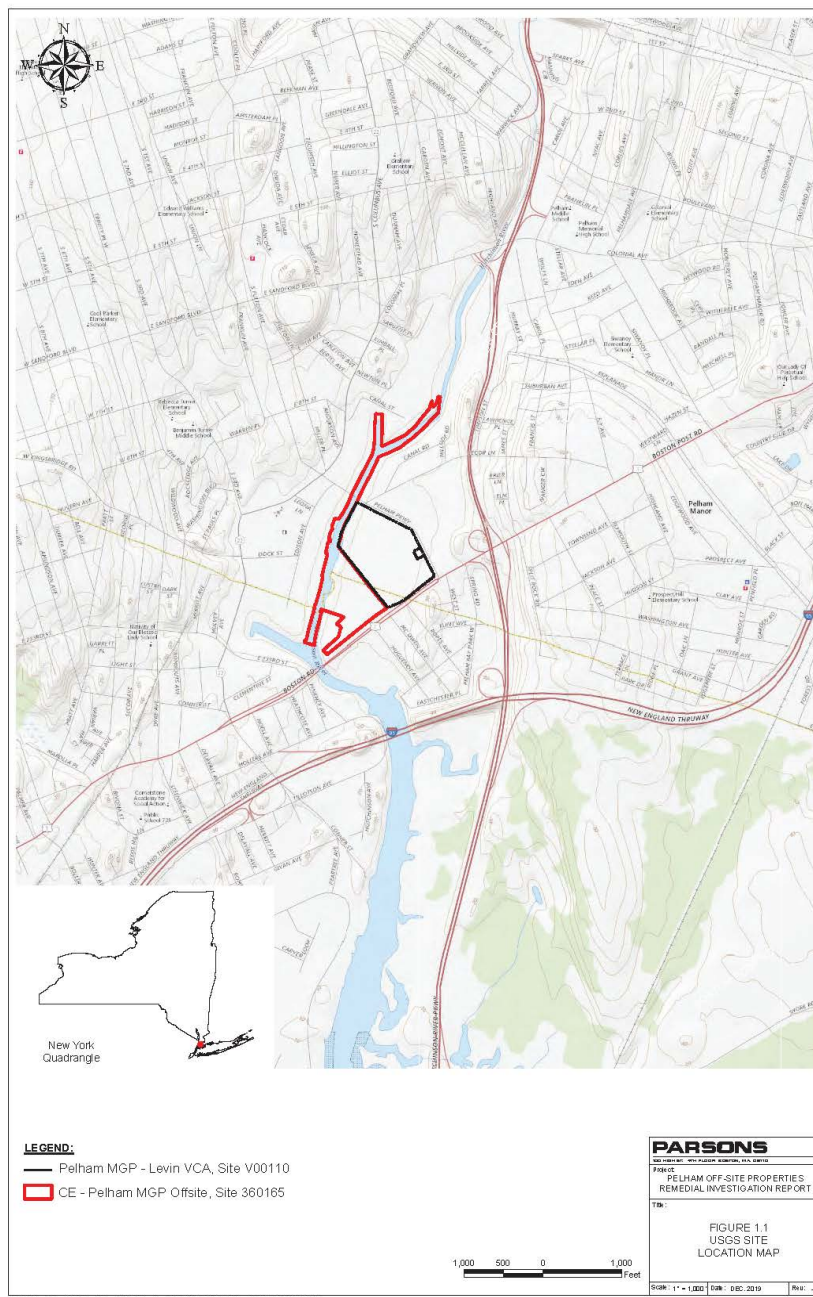
[www.dec.ny.gov/chemical/61092.html](http://www.dec.ny.gov/chemical/61092.html)

Note: Please disregard if you already have signed up and received this fact sheet electronically.

## DECinfo Locator

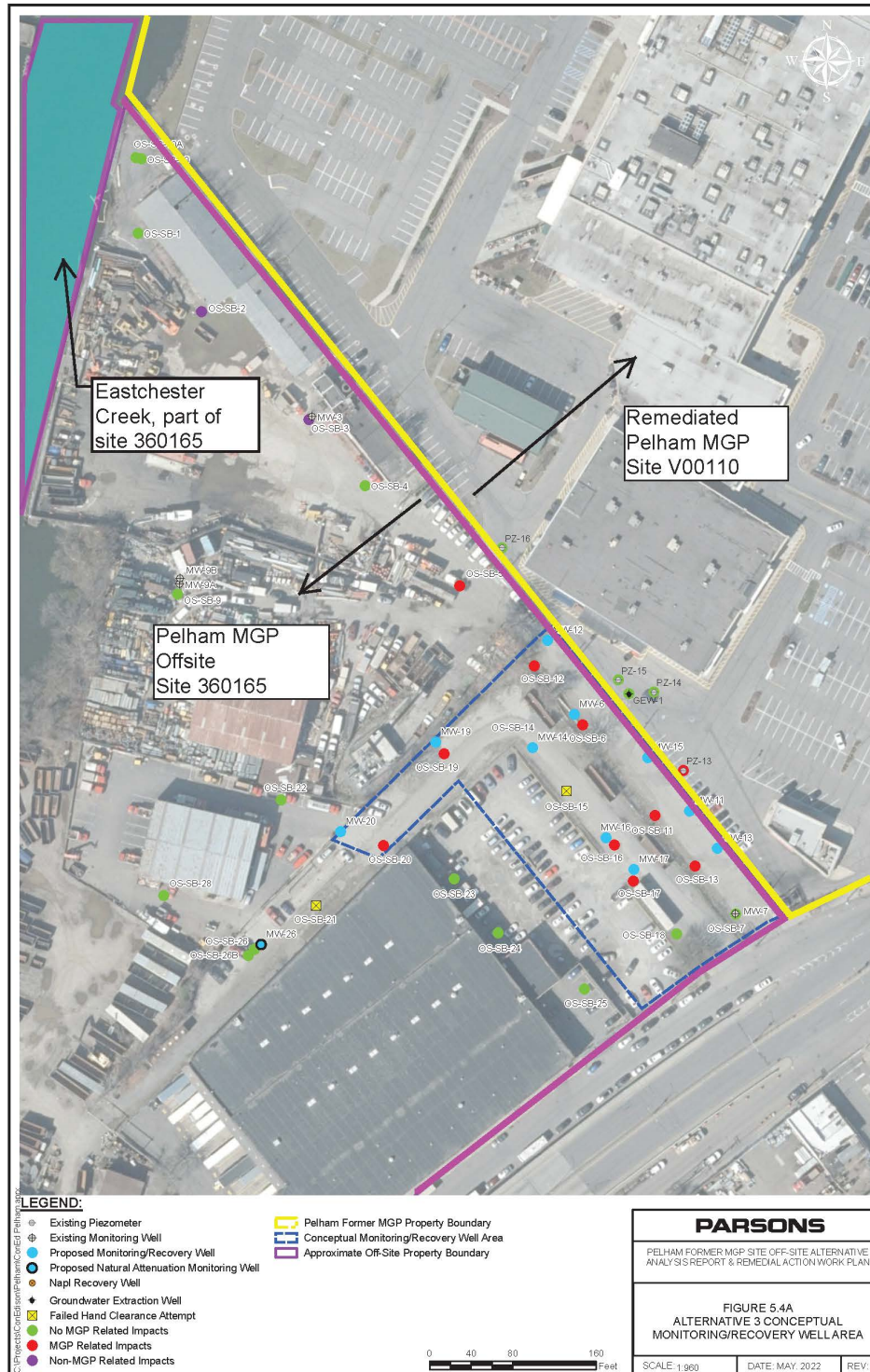
Interactive map to access DEC documents and public data about the environmental quality of specific sites: <http://www.dec.ny.gov/pubs/109457.html>

# MGP PROGRAM



# MGP PROGRAM

## Proposed Remedy





## Translation Available. Don't see your language? Ask!

<b>English</b>	To have this document translated into a language you can understand, contact the person below. There is no charge for the translation.
<b>Español Spanish</b>	Si necesita la traducción de este documento a un idioma que pueda entender, comuníquese con la persona indicada abajo. La traducción es gratis.
<b>简体字 Simplified Chinese</b>	如需將此文件翻譯成您能理解的語言版本，請聯絡下方人員。本次翻譯不收取費用。
<b>Русский Russian</b>	Чтобы получить перевод этого документа на понятный вам язык, свяжитесь с представителем, данные которого указаны ниже. Плата за эту услугу не взимается.
<b>אידיש Yiddish</b>	צו האבן די דאקומענט איבערגעטייטשט אין א שפראך וואס איר קענט פארשטיין, פארבינדט זיך מיט די פערזאן אונטן. די איבערטייטשונג איז פריי פון אפצאל.
<b>বাঙালি Bengali</b>	এই নিখিট আপিন বুঝেত পারেন এমন একটি ভাষায় অনুবাদ করেত, িনিলিখতবষ্ির সাথে েযোগাযোগ করনা অনুবাের জনষ্ েকান চাজর্ িদেত হেব না।
<b>한국어 Korean</b>	이 언어를 본인이 이해할 수 있는 언어로 받아보려면 아래 담당자에게 문의하십시오. 번역료는 없습니다.
<b>Kreyòl Ayisyen Haitian Creole</b>	Pou yo ka tradwi dokiman sa nan yon lang ou ka konprann, kontakte moun ki anba a. Ou p'ap peye anyen pou tradiksyon an.
<b>Italiano Italian</b>	Per ottenere la traduzione di questo documento in un'altra lingua, contatti la persona indicata qui di seguito. La traduzione è gratuita.
<b>العربية Arabic</b>	لترجمة هذا المستند إلى لغة يمكنك فهمها، تواصل مع الشخص أدناه. لا يتم تطبيق رسوم مقابل الترجمة.
<b>Języki Polski Polish</b>	Aby uzyskać tłumaczenie tego dokumentu na język, który jest dla Ciebie zrozumiały, skontaktuj się z poniższą osobą. Za tłumaczenie nie jest pobierana żadna opłata.

**Contact: John Spellman 518-402-9686 [John.Spellman@dec.ny.gov](mailto:John.Spellman@dec.ny.gov)**