



Department of  
Environmental  
Conservation

**Where to Find Information:**

*Project documents are available at the following location(s) to help the public stay informed.*

**Document Repository Name**

Watervliet Public Library  
1501 Broadway  
Watervliet, NY 12189  
(518) 274-4471  
(director@watervlietpubliclibrary.org)

Project documents also are available on the  
NYSDEC website at:

<http://www.dec.ny.gov/chemical/96987.html>

**Who to Contact:**

*Comments and questions are always welcome  
and should be directed as follows:*

**Project-Related Questions**

Ruth Curley, Project Manager  
NYSDEC  
Division of Environmental Remediation  
625 Broadway  
Albany, NY 12233-7016  
(518) 402-9480  
[ruth.curley@dec.ny.gov](mailto:ruth.curley@dec.ny.gov)

**Project-Related Health Questions**

Steven Berninger  
NYSDOH  
Bureau of Environmental  
Exposure Investigation  
Empire State Plaza  
Corning Tower Room 1787  
Albany, NY 12237  
(518) 402-7860  
[bee@health.ny.gov](mailto:bee@health.ny.gov)

For more information about New York's State  
Superfund Program, visit:

[www.dec.ny.gov/chemical/8439.html](http://www.dec.ny.gov/chemical/8439.html)

# FACT SHEET

State Superfund Program

Al Tech Specialty Steel

Lincoln Ave. & Spring Street  
Watervliet, NY 12189

**SITE No. 401003**

**NYSDEC REGION 4**

**January 2019**

## Remedies Proposed for State Superfund Site; Public Comment Period and Public Meeting Announced

**Public Meeting, Tuesday 1/22/19 at 7:00 PM  
Watervliet Senior Center  
1501 Broadway  
Watervliet, NY 12189**

NYSDEC invites you to a public meeting to discuss the remedy proposed for the site. You are encouraged to provide comments at the meeting, and during the 30-day comment period described in this fact sheet.

The public is invited to comment on a remedy being proposed by the New York State Department of Environmental Conservation (NYSDEC) in consultation with the New York State Department of Health (NYSDOH) to address contamination related to the Al Tech Specialty Steel site ("site") located at 1200 Spring Street, Watervliet, Albany County. Please see the map for the site location. Documents related to the cleanup of this site can be found at the location(s) identified to the left under "Where to Find Information." The estimated cost to implement the remedy is \$16,600,000.

**How to Comment:** NYSDEC is accepting written comments about the proposed plan for 30 days, from **January 3, 2019 through February 2, 2019**. The proposed plan is available for public review at the location(s) identified at left under "Where to Find Information." Please submit comments to the NYSDEC project manager listed under Project-Related Questions in the "Who to Contact" area at left.

The site is listed as a Class "2" site in the State Registry of Inactive Hazardous Waste Sites (list of State Superfund sites). A Class 2 site represents a significant threat to public health or the environment; action is required. The Proposed Remedial Action Plan addresses two Operable Units (OUs) at the site; the entire Main Plant Area (MPA) ground surface and property around the Spring Street landfill (OU-01) and the on-site Kromma Kill soils and sediments along Lincoln Avenue (OU-04).

**Proposed Remedial Action Plan:** The remedy proposed for the site includes:

- Excavation and off-site disposal of soil and concrete containing PCBs in excess of 25 parts per million (ppm) in areas in the vicinity of former transformers, building floors, transformer/machinery pads, and test pits in

# STATE SUPERFUND PROGRAM

the scrap metal storage area. It is estimated that 6030 cubic yards (CY) would be excavated, of which 1540 CY of soil will exceed the regulatory hazardous waste threshold of 50 ppm for PCBs.

- Excavation, stabilization and on-site disposal of soils located along both sides of the Kromma Kill from Spring Street south. These areas are comprised of fill material that contains lead in excess of the hazardous waste criteria, and that also contains PCBs, chromium and nickel. Approximately 4100 CY of soils are expected to be excavated to an estimated depth of 10 feet;
- Excavation, dewatering and on-site disposal of approximately 6190 CY of on-site Kromma Kill sediments extending from Spring Street south under Lincoln Avenue to the culverted section containing contaminants greater than the Class A Sediment Guidance Value (SGV). It is estimated that approximately 1540 CY of the sediment will be characterized as hazardous waste due to lead concentrations and will need to be chemically treated prior to on-site disposal under the site cover. The remaining 4650 CY of sediment will be dewatered and disposed of on-site under the site cover;
- The Kromma Kill stream bed bathymetry and topography will be restored with appropriate stream bed material. If present, submerged aquatic vegetation in the remediation area will also be restored. Sediment traps will be constructed at the base of on-site tributaries to the Kromma Kill;
- A site cover will be required to allow for industrial use of the site in areas where the upper one foot of exposed surface soil will exceed the applicable soil cleanup objectives (SCOs);
- End-point soil samples and post-remedial groundwater samples will be collected to evaluate the effectiveness of the remedy;
- A Health and Safety Plan and Community Air Monitoring Plan will be implemented during all ground intrusive activities;
- A Site Management Plan (SMP) will be developed and implemented for long term maintenance of the remedial systems; and
- An Environmental Easement will be placed on the property to ensure proper use of the site.

NYSDEC developed the proposed remedy after reviewing the detailed investigation of the site and evaluating the remedial options in the "Feasibility Study."

**Next Steps:** NYSDEC will consider public comments as it finalizes the remedy for the site. The selected remedy will be described in a document called a "Record of Decision" that will explain why the remedy was selected and respond to public comments. A detailed design of the selected remedy will then be prepared, and the cleanup will be performed.

NYSDEC will keep the public informed throughout the investigation and cleanup of the site.

**Site Description:** The Al Tech Specialty Steel site lies in an industrial area in the town of Colonie, NY. The 68 acre Al Tech Main Plant Area (MPA) spans the area between Lincoln Ave and Spring Street Road and consists of eight large, empty and unused remaining buildings, roadways, concrete foundation slabs and former industrial waste disposal areas. The 31 acre Al Tech Waste Management Area (WMA) is situated on a hillside along Spring Street Road and includes a 12-acre Hazardous Waste Landfill. The Kromma Kill flows along significant lengths of the north and the east sides of the site. Other former industrial facilities are also located in the immediate vicinity including the former Delaware and Hudson Rail Yard and the former Adirondack Steel and Casting Corporation. A second inactive hazardous waste disposal site, the Former Bearoff Metallurgical, Site 401069, is adjacent to the south of the landfill. Construction of a housing development to the west of the WMA was initiated in 2001.

Additional site details, including environmental and health assessment summaries, are available on NYSDEC's Environmental Site Remediation Database (by entering the Site ID, 401003) at:

<http://www.dec.ny.gov/cfm/external/index.cfm?pageid=3>

**Summary of the Investigation:** The primary contaminants of concern at the site are PCBs and metals including lead, chromium and nickel, which are present site-wide in soil and sediments. Petroleum product has been identified on top of the water table in some of the groundwater monitoring wells.

# STATE SUPERFUND PROGRAM

**State Superfund Program:** New York's State Superfund Program (SSF) identifies and characterizes suspected inactive hazardous waste disposal sites. Sites that pose a significant threat to public health and/or the environment go through a process of investigation, evaluation, cleanup and monitoring.

NYSDEC attempts to identify parties responsible for site contamination and require cleanup before committing State funds.

For more information about the SSF, visit:  
<http://www.dec.ny.gov/chemical/8439.html>

*We encourage you to share this fact sheet with neighbors and tenants, and/or post this fact sheet in a prominent area of your building for others to see.*

## Receive Site Fact Sheets by Email

Have site information such as this fact sheet sent right to your email inbox. NYSDEC invites you to sign up with one or more contaminated sites county email listservs at:

[www.dec.ny.gov/chemical/61092.html](http://www.dec.ny.gov/chemical/61092.html)

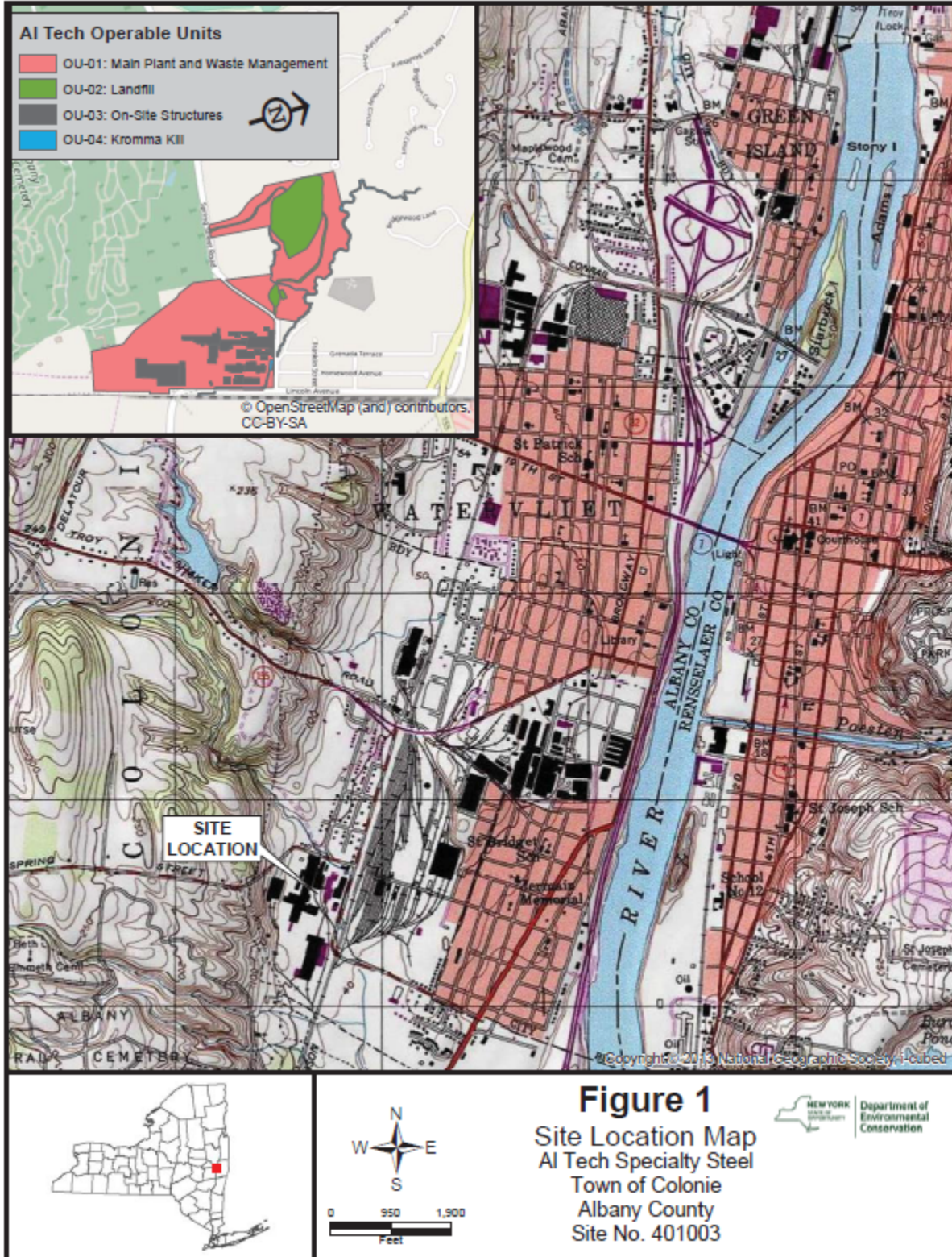
It's quick, it's free, and it will help keep you better informed. As a listserv member, you will periodically receive site-related information/ announcements for all contaminated sites in the county(ies) you select.

Note: Please disregard if you already have signed up and received this fact sheet electronically.



# STATE SUPERFUND PROGRAM

## Site Location Map



**Figure 1**  
Site Location Map  
Al Tech Specialty Steel  
Town of Colonie  
Albany County  
Site No. 401003

# STATE SUPERFUND PROGRAM

Proposed Remedy Figure

