

© OpenStreetMap (and) contributors, CC-BY-SA

Copyright © 2013 National Geographic Society, i-cubed

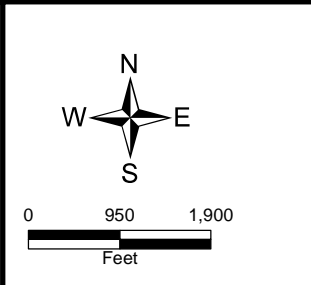


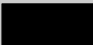



Figure 1
 Site Location Map
 AI Tech Specialty Steel
 Town of Colonie
 Albany County
 Site No. 401003



Legend

AI Tech Operable Units

-  OU-01: Main Plant Area & Waste Management Area Excluding the Landfill
-  OU-02: Hazardous Waste Landfill
-  OU-03: On-Site Structures
-  OU-04: Kromma Kill

RealCo-owned land proposed for redevelopment

Landfill

Unnamed Tributary

Kromma Kill

Town of Colonie

New York State
Department of Environmental
Conservation

Division of
Environmental Remediation

AL Tech Specialty Steel

DEC Site No.: 4-01-003

FIGURE 2

Operable Unit
Boundaries

Map Details

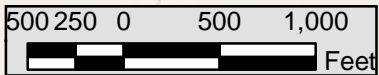
Created in ArcMap 10

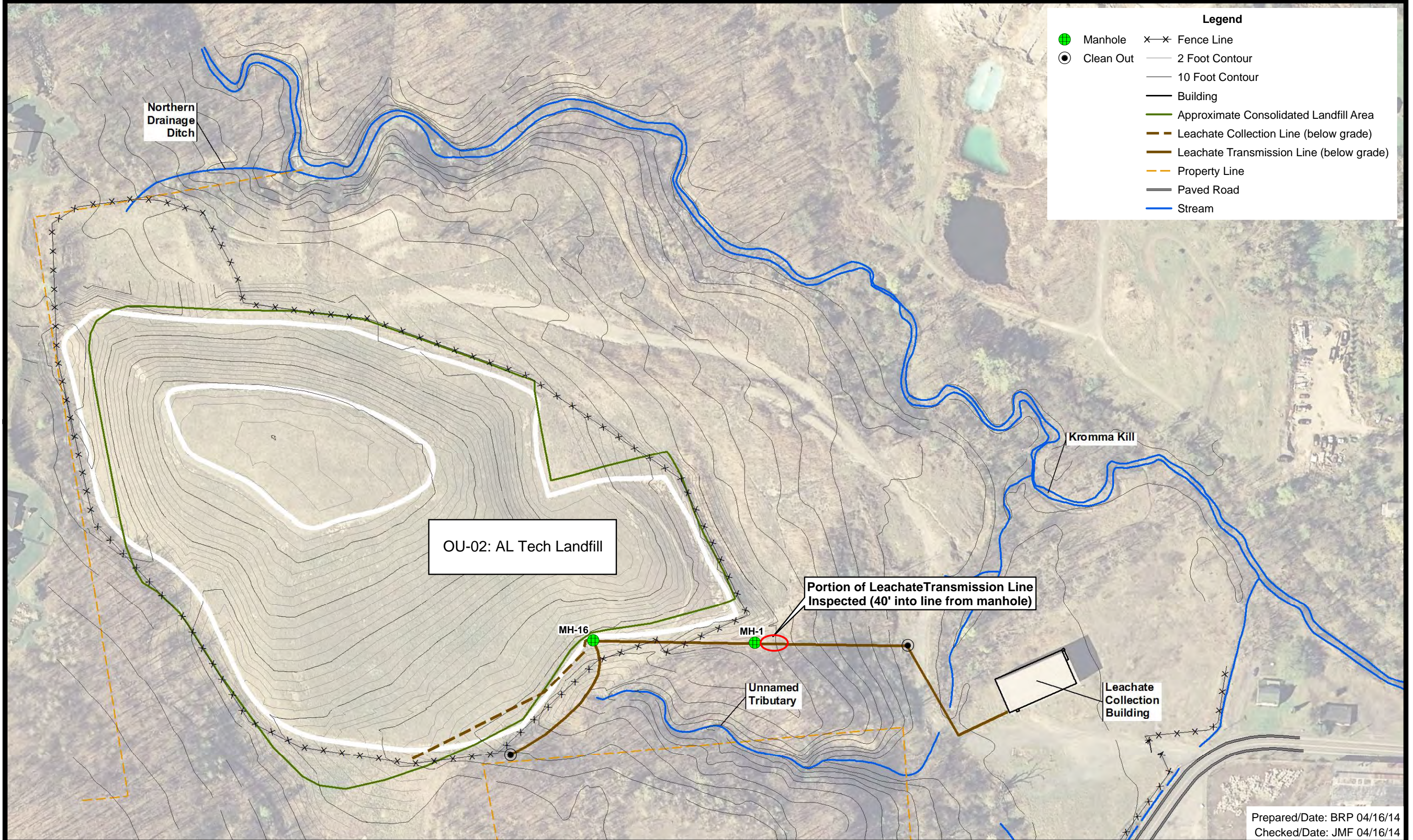
Date of Last
Revision: 10.28.2015

UNAUTHORIZED DUPLICATION
IS A VIOLATION OF
APPLICABLE LAWS



North American Datum 1983
UTM Zone 18





Albany County color digital orthoimagery (2007) obtained from New York State GIS Clearinghouse at: <http://www.nysgis.state.ny.us>

AI Tech Specialty Steel WMA
 NYSDEC Site # 401003
 Colonie, New York


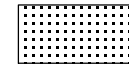


Figure 2-1 - AL Tech Landfill and Supporting Infrastructure

Legend

On-Site Structures

Structure Disposition

-  Leave In Current State
-  On-Site Structure Abatement

AL Tech Specialty Steel
DEC Site No.: 4-01-003

FIGURE 3-1

OU-03: Proposed
Remedial Action for
On-Site Structures

Map Details

Created in ArcGIS 10.3

Last Revision: 01.12.2018

UNAUTHORIZED DUPLICATION IS A
VIOLATION OF APPLICABLE LAWS



North American Datum 1983
UTM Zone 18

