



Project Management Work Plan Perfection Plating (4-01-037) Watervliet, New York

Prepared for

New York State Department of Environmental Conservation
625 Broadway
Albany, New York 12233



Prepared by

EA Engineering, P.C., and Its Affiliate
EA Science and Technology
6712 Brooklawn Parkway, Suite 104
Syracuse, New York 13211-2158
(315) 431-4610

January 2008
Revision: FINAL
EA Project No. 14474.24

Project Management Work Plan Perfection Plating (4-01-037) Watervliet, New York

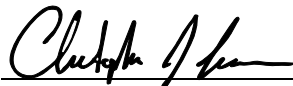
Prepared for

New York State Department of Environmental Conservation
625 Broadway
Albany, New York 12233



Prepared by

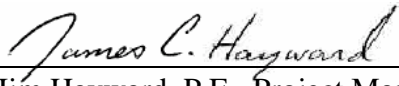
EA Engineering, P.C. and Its Affiliate
EA Science and Technology
6712 Brooklawn Parkway, Suite 104
Syracuse, New York 13211-2158
(315) 431-4610



Christopher J. Canonica, P.E., Program Manager
EA Engineering, P.C.

14 January 2008

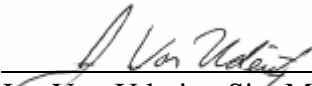
Date



Jim Hayward, P.E., Project Manager
EA Engineering, P.C.

14 January 2008

Date



Joe Von Uderitz, Site Manager
EA Science and Technology

14 January 2008

Date

January 2008
Revision: FINAL
EA Project No. 14474.24

CONTENTS

	<u>Page</u>
LIST OF FIGURES	
1. INTRODUCTION	1
1.1 Objectives	1
1.2 Project Management Work Plan Organization	1
1.3 Description of Work Tasks	2
1.3.1 Work Plan Development (Task 1)	2
1.3.2 Treatment Plant Operation and Maintenance (Task 2)	2
1.3.3 Long-Term Monitoring (Task 3)	3
1.3.4 Remedial Site Optimization (Task 4)	4
1.3.5 Reporting (Task 5)	4
2. PROJECT ORGANIZATION AND SCHEDULE	5
2.1 Project Organization	5
2.2 Project Management	5
2.3 Project Schedule	6
3. SUBCONTRACTORS	7
4. MINORITY/WOMAN-OWNED BUSINESS ENTERPRISE-EQUAL EMPLOYMENT OPPORTUNITY UTILIZATION PLAN	8
4.1 Consultant/Contractor Detailed M/WBE-EEO Utilization Plan	8
APPENDIX A: WORK ASSIGNMENT BUDGET SCHEDULE 2.11	
APPENDIX B: SUBCONTRACTOR QUOTES	
APPENDIX C: CONSULTANT/CONTRACTOR DETAILED M/WBE-EEO UTILIZATION PLAN	

LIST OF FIGURES

<u>Number</u>	<u>Title</u>
1	Site location map.
2	Well location map.
3	Project organization chart.
4	Project schedule.

1. INTRODUCTION

The New York State Department of Environmental Conservation (NYSDEC) tasked EA Engineering, P.C. and its affiliate EA Science and Technology (EA) to oversee site management activities and perform site management at the Perfection Plating Site (NYSDEC Site No. 4-01-037) in Watervliet, Albany County, New York (Figure 1).

The Work Assignment will be conducted under the NYSDEC State Superfund Standby Contract (Work Assignment No. D004441-24). The initial step in the Work Assignment is preparation of this Project Management Work Plan (PMWP), which describes the anticipated work activities and the associated budget and staffing plan. The elements of this PMWP were prepared in accordance with the most recent and applicable guidelines and requirements of NYSDEC.

1.1 OBJECTIVES

The objectives of this Work Assignment are:

- Oversee and perform site management activities.
- Oversee operation of the Perfection Plating groundwater treatment plant and its repairs and maintenance activities.
- Perform monitoring of the performance and effectiveness of the remedy.
- Perform Remedial Site Optimization (RSO).
- Make revisions to the Long-Term Monitoring Plan and Operations and Maintenance manual and compiling of the Site Management Plan.
- Document all field activities, submit analytical samples to Environmental Laboratory Analytical Program- (ELAP)-certified laboratories, summarize analytical data, and qualify analytical data through third party data validation.
- Periodic review reporting.

1.2 PROJECT MANAGEMENT WORK PLAN ORGANIZATION

This PMWP is organized into the following sections:

- **Section 1**-Provides the overall approach and specific activities that will be performed at the Perfection Plating Site.
- **Section 2**-Presents the project organization and schedule

- **Section 3**-Identifies areas of work that will require subcontracting
- **Section 4**-Presents the utilization plan for Minority/Women-Owned Business Enterprise (M/WBE) subcontractors and Equal Employment Opportunity (EEO) within EA.

This PMWP is a stand alone document; a more detailed Site Management Plan describing proposed field activities, quality assurance procedures, and health and safety considerations will be developed as the work assignment progresses.

The budget for this Work Assignment (Schedule 2.11) is provided in Appendix A.

1.3 DESCRIPTION OF WORK TASKS

The following tasks have been completed or will be completed as part of the work assignment:

- Work Plan Preparation
- Treatment Plant Operation and Maintenance
- Long-Term Monitoring
- RSO
- Reporting.

A brief summary of each activity is provided below, and further details of the field activities will be provided in the Site Management Plan.

1.3.1 Work Plan Preparation (Task 1)

A meeting was held at the Perfection Plating Site, Watervliet, New York on 12 August 2007 in conjunction with the development of this PMWP. Meeting attendees included representatives from the NYSDEC Division of Environmental Remediation Department, the Investigation and Response (I&R) contractor and EA. The site visit was performed in order to become familiar with the area and discuss proposed field work activities. The NYSDEC also provided historical documents and analytical data, which were reviewed and incorporated into this PMWP.

1.3.2 Treatment Plant Operation and Maintenance (Task 2)

EA will oversee continuous operation of the groundwater treatment plant by an I&R contractor until such time as the periodic review establishes that the Record of Decision requirements have been met or other basis for discontinuing operation exists. The I&R contractor will complete weekly site visits to perform system operation checks and routine equipment maintenance. Monthly treatment system sampling will also be completed by the I&R contractor. Oversight of operation and maintenance activities will include monthly site inspections for the first 12 months and every quarter thereafter. During these inspections, EA will meet with the I&R contractor to discuss system performance and efficiency, determine system needs or improvements, and

compile data collected during the weekly visits to be entered into a database. Additional site visits will be completed if it is determined that system repairs or upgrades are required. The site, surrounding areas, and especially the discharge point of the system will be inspected at least quarterly. Snow removal will be coordinated with the NYSDEC's Operations Division.

Task 2 includes the following level of effort:

- One EA personnel (NSPE Level I/II), 12 monthly site visits, 5 hours each visit for the first year (total of 60 hours). The level of efforts assumes site visits will coincide with monthly site visits at NYSDEC Roxy Cleaners Site.
- One EA personnel (NSPE Level I/II), 8 quarterly site visits, 5 hours each visit after first year (total of 40 hours). The level of efforts assumes the site visits will coincide with the quarterly site visits at NYSDEC Roxy Cleaners Site.
- One EA personnel (NSPE Level I/II), 10 emergency visits, 10 hours each visit, for the duration of the project (total of 100 hours).
- One EA personnel (Level IV/V), 3 annual site visits, 10 hours each visit for the duration of the project (total of 30 hours).

1.3.3 Long-Term Monitoring (Task 3)

Prior to each groundwater monitoring event, EA will notify the property owners that access will be required for the monitoring wells. All wells will be inspected using a well inventory form provided by the NYSDEC, denoting the condition of all the wells. There is currently one well (MW-ESE9) that is no longer available for sampling due to blockage. All wells, including MW-ESE9, will be inspected to determine if reconditioning or replacement is needed.

All wells will be sampled initially for the first year. Sampling of the long term monitoring perimeter wells will be performed every 15 months beginning in February 2008 to capture each season type (three events)(Figure 2). Water elevations and water quality data (temperature, pH, conductivity, and turbidity) will be obtained initially and each quarter thereafter for the first year in order to determine water capture zone. EA will review the existing Long-Term Monitoring Plan and existing data, and will revise the Long-Term Monitoring Plan based on this experience. Treatment system sampling of the influent groundwater and effluent discharge will be performed monthly by the I&R contractor. All analytical data will be forwarded to EA and compiled into a database for preparation of the periodic review reports.

Task 3 includes the following level of effort:

- Two EA personnel (NSPE Level I/II), 3 sampling events, 2 days per sampling event, 10 hours per day per person (total of 120 hours).

- One EA personnel (NSPE Level I/II), 80 hours for Long-Term Monitoring Plan review/revision, data compilation and data entry for the duration of the project (total of 80 hours).

1.3.4 Remedial Site Optimization (Task 4)

A RSO will be completed using the guidance supplied by the NYSDEC. The RSO will be completed after 1 year of data has been collected. EA will meet with the I&R contractor to discuss efforts and activities completed throughout the reporting period. Information gathered from these meetings will be included in the RSO along with current system efficiency and improvements or upgrades necessary to optimize treatment system performance.

1.3.5 Reporting (Task 5)

Upon completion of each monitoring event, and semi-annually, a letter report will be completed to discuss the activities associated with the monitoring and the results. The operating record that is maintained at the treatment plant will also be included in the letter report.

EA will develop a Periodic Review Report (PRR) on a yearly basis throughout the duration of the contract. The PRR will include all activities that have taken place over the past 12 months, including analytical results, system operations, problems encountered, and remedies taken to correct them. The PRR will also present monitoring results (including past years) in tabular and graphics form (e.g. isopleths), with an analysis of the performance and effectiveness of the remedy.

All analytical data will be submitted in accordance with NYSDEC Analytical Service Protocol (ASP) for Category B deliverables. A Site Management Plan will be developed, and will include the Long-Term Monitoring Plan, an updated Operation and Maintenance Manual (if applicable), and Institutional and Engineering Control Plan (if applicable). Any modifications associated with the treatment system operations manual, and the Long-Term Monitoring Plan to date will be included in the Site Management Plan.

2. PROJECT ORGANIZATION AND SCHEDULE

2.1 PROJECT ORGANIZATION

The project activities at the Perfection Plating Site will be managed through an organized effort of scientific and engineering personnel and technical resources. These efforts will employ pre-approved field procedures, sampling techniques, and analytical methods to accomplish the project objectives as outlined in the Work Plan. Effective program organization will accommodate these requirements while maintaining a manageable degree of control over these activities.

The project organization for the accomplishment of this effort is illustrated in Figure 2. The key technical management of this assignment will be accomplished by the project manager and assigned project team. Additional individuals will be made available, if warranted. Areas of work that require subcontracting are discussed in Section 3.

2.2 PROJECT MANAGEMENT

EA will provide oversight, coordination, health and safety, field support, and evaluation of analytical data. EA will also be responsible for evaluation of analytical test results, which will be submitted to NYSDEC. The EA staff members involved in this project are detailed below:

- ***Christopher Canonica, EA Program Manager and Project Quality Assurance/Quality Control (QA/QC) Officer***—The QA/QC Officer will provide guidance on technical matters and review technical documents relating to the project. He will assess the effectiveness of the QA/QC program and recommend modifications when applicable. Additionally, the QA/QC Officer may delegate technical guidance to specially trained individuals under his direction.
- ***Jim Hayward, P.E., EA Project Manager***—The Project Manager provides overall coordination and preparation of the project within EA. This includes coordination with NYSDEC and New York State Department of Health, budget control, subcontractor performance, implementation of the Quality Assurance Project Plan, and allocation of resources and staffing to implement both the QA/QC program and the site Health and Safety Plan.
- ***Scott Graham, C.P.G., EA Project QA/QC Coordinator***—The Project QA/QC Coordinator is responsible for project-specific supervision and monitoring of the QA/QC program. He will ensure that field personnel are familiar with and adhere to proper sampling procedures, field measurement techniques, sample identification, and chain-of-custody procedures. He will coordinate with the analytical laboratory for the receipt of samples and reporting of analytical results, and will recommend actions to correct

deficiencies in the analytical protocol or sampling. Additionally, he will prepare QA/QC reports for management review.

- ***Joe Von Uderitz, EA Site Manager***—The Site Manager will serve as the on-site contact person for field activities. He will be responsible for coordinating the field activities; including inspecting and replacing equipment, preparing daily and interim reports, scheduling sampling, and coordinating shipment and receipt of samples and containers.

The Program Health and Safety Officer is also an integral part of the project implementation team.

- ***Peter Garger, EA Program Health and Safety Officer***—The Program Health and Safety Officer will be responsible for the development, final technical review, and approval of the Health and Safety Plan. In addition, he will provide authorization, if warranted, to modify personal protective equipment requirements based on field conditions. He will also provide final review of all health and safety monitoring records and personal protective equipment changes to ensure compliance with the provisions of the Health and Safety Plan.

2.3 PROJECT SCHEDULE

The proposed schedule for completion of the project activities is presented on Figure 3. The schedule includes tasks up to the completion of the Data Usability and Summary Report associated with this Work Assignment. The schedule assumes field activities will begin in February 2008. The schedule does not account for delays due to unforeseen site conditions (i.e., inclement weather).

Every attempt will be made to adhere to the schedule presented. Unexpected delays will be documented and reported to NYSDEC in a timely fashion. If the schedule needs to be modified, EA will contact NYSDEC for approval of the updated schedule.

3. SUBCONTRACTORS

Successful implementation of the field and reporting activities associated with this Work Assignment will require the following types of subcontractors:

- An off-site laboratory to analyze various environmental samples (water)
- A data validator to perform a usability analysis of the laboratory data associated with the field samples.

In accordance with the NYSDEC draft *Handbook for Standby Consultant Contracts (for DER Standby Consultants)* (NYSDEC 2005)¹, EA established standby subcontracts for laboratory analyses, drilling, data validation, and surveying/engineering services. EA is distributing the laboratory analyses and data validation services to these standby subcontractors on a rotational basis and as necessary to satisfy EA's M/WBE goals. Hampton-Clarke Veritech and ChemWorld Environmental, Inc. will be performing the laboratory analyses and data validation services, respectively.

Based on the evaluation of current subcontractor standby rates and rates quoted from non-standby subcontractors, EA proposes the list of subcontractors provided below.

Activity	Subcontractor	Projected Contract Amount (\$)
Analytical Services	Hampton-Clarke Veritech	\$2,346
Data Validation	ChemWorld Environmental	\$594

¹ NYSDEC. 2005. draft *Handbook for Standby Consultant Contracts (for DER Standby Consultants)*. December.

4. MINORITY/WOMAN-OWNED BUSINESS ENTERPRISE-EQUAL EMPLOYMENT OPPORTUNITY UTILIZATION PLAN

It is understood that EA is required by NYSDEC to make Good Faith Efforts towards the realization of M/WBE-EEO goals established in the NYSDEC draft *Handbook for Standby Consultant Contracts*. Accordingly, the remainder of this section contains the Consultant/Contractor Detailed M/WBE-EEO Utilization Plan prepared for this Work Assignment. The M/WBE-EEO Utilization Plan identifies that EA's goals are to award 20 percent of the total contract costs to M/WBE firms. Specifically, the goals are to award 15 percent of the total contract costs to MBE firms (\$12,961.20) and 5 percent of the total contract costs to WBE firms (\$4,320.40). In addition, EA's goals are to have 10 percent of EA's workforce for the project be minority and 10 percent be female.

In accordance with the NYSDEC draft *Handbook for Standby Consultant Contracts*, EA established standby subcontracts with 10 New York State Department of Economic Development certified M/WBE firms that provide laboratory analyses and data validation services. In order to meet the M/WBE goals, EA proposes to use standby M/WBE subcontractors (as identified below) to perform the laboratory analyses and data validation services required to conduct the operation, monitoring, and sampling at the Perfection Plating Site as detailed in Section 3 of this PMWP.

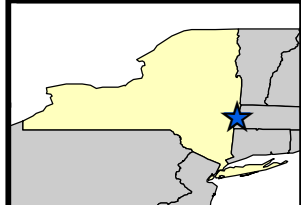
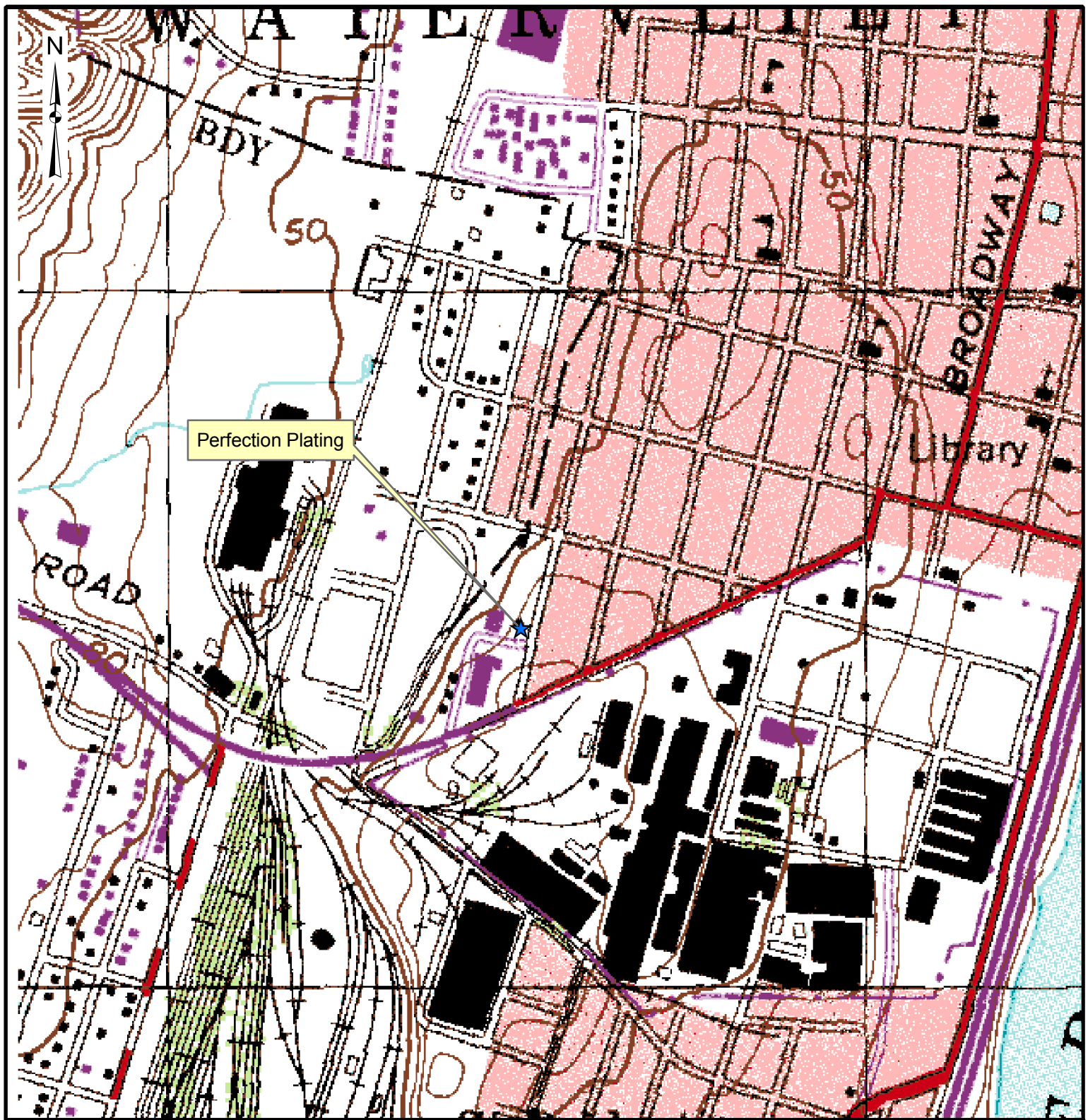
Subcontractor	Classification	Service to be Performed	Projected Contract Amount (\$)	Award Date	Contract Start Date	Projected Completion Date
Hampton-Clarke Veritech	WBE	Analytical Services	\$2,346.00	TBD	TBD	TBD
ChemWorld Environmental	WBE	Data Validation	\$594.00	TBD	TBS	TBD

Approximately 3.4 percent of the total contract costs are proposed to be performed by WBE firms, which is lower than the Standby Contract WBE utilization goals. The MBE utilization goal is not anticipated to be met for this project. A total of 3.4 percent of the total project cost is anticipated to be awarded to M/WBE firms.

As identified in the M/WBE-EEO Utilization Plan, approximately 10 percent of EA's total contract hours for the site characterization at the Perfection Plating Site is proposed to be worked by female employees (Section 4.1). However, none of EA's total contract hours are anticipated to be worked by minority employees.

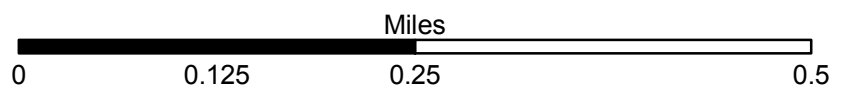
4.1 CONSULTANT/CONTRACTOR DETAILED M/WBE-EEO UTILIZATION PLAN

The plan consists of four forms, which are included in Appendix C.



LEGEND

★ Site Location



Source: USGS Seamless Data Distribution 2007



PERFECTION PLATING (Site No. 4-01-037)
SITE MANAGEMENT PLAN
WATERVLIT, NEW YORK

FIGURE 1
Site Location Map

PROJECT MGR:
JCH

DESIGNED BY:
CJS

CREATED BY:
CJS

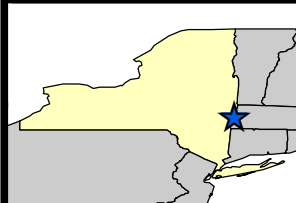
CHECKED BY:
JCH

SCALE:
AS SHOWN

DATE:
JANUARY 2008

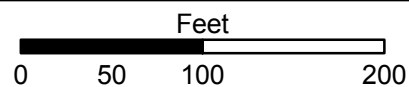
PROJECT NO:
14474.24

FILE NO:
GIS/PROJECTS/
FIGURE1.MXD



Legend

- +— Perfection Plating
- - - Property Line
- Buildings
- Monitoring Well



Source: USGS Seamless Data Distribution 2007



PERFECTION PLATING (Site No. 4-01-037)
SITE MANAGEMENT PLAN
WATERVLIET, NEW YORK

FIGURE 2
Monitoring Well Location Map

PROJECT MGR:
JCH

DESIGNED BY:
CJS

CREATED BY:
CJS

CHECKED BY:
JCH

SCALE:
AS SHOWN

DATE:
JANUARY 2008

PROJECT NO:
14474.24

FILE NO:
GIS/PROJECTS/
FIGURE1.MXD

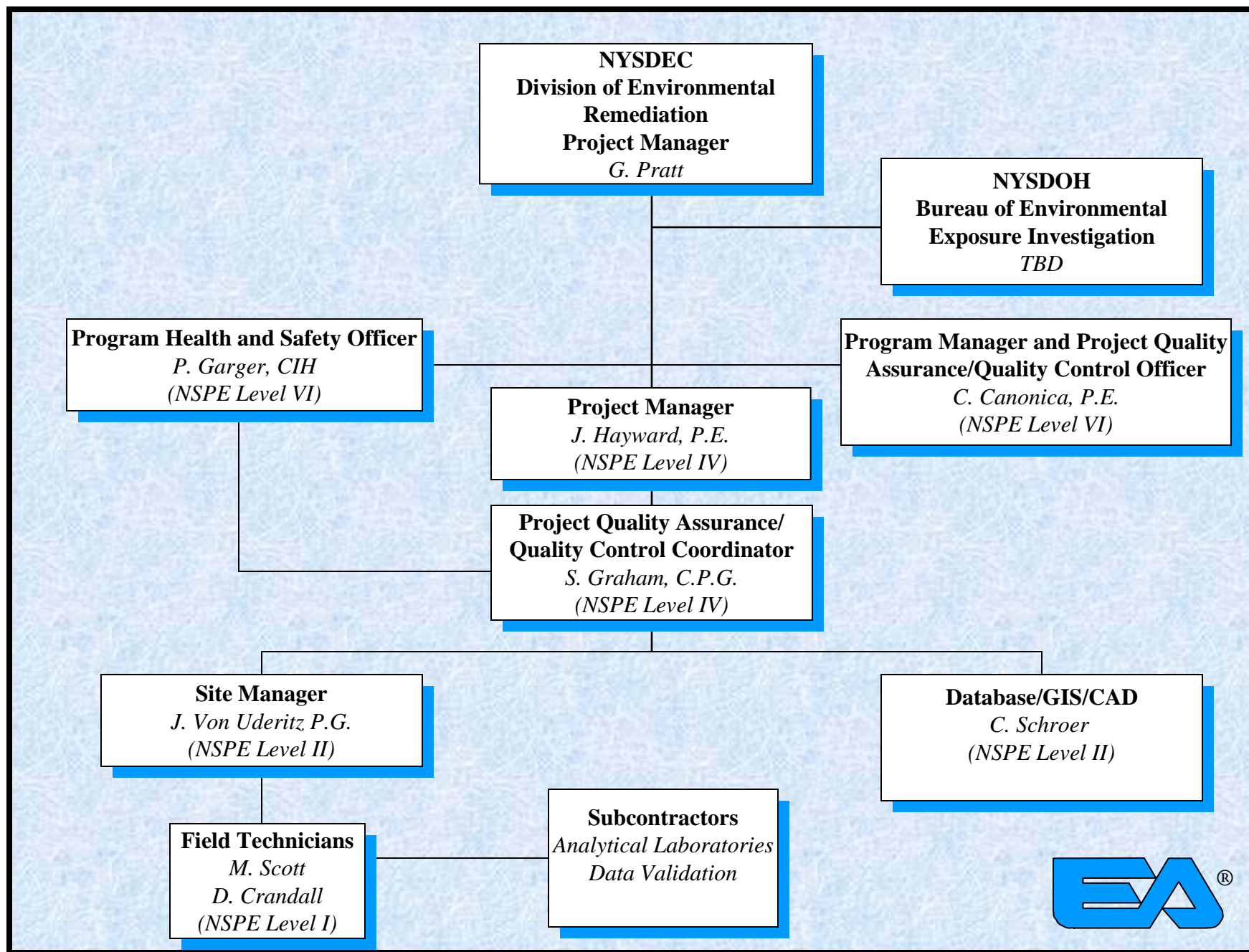
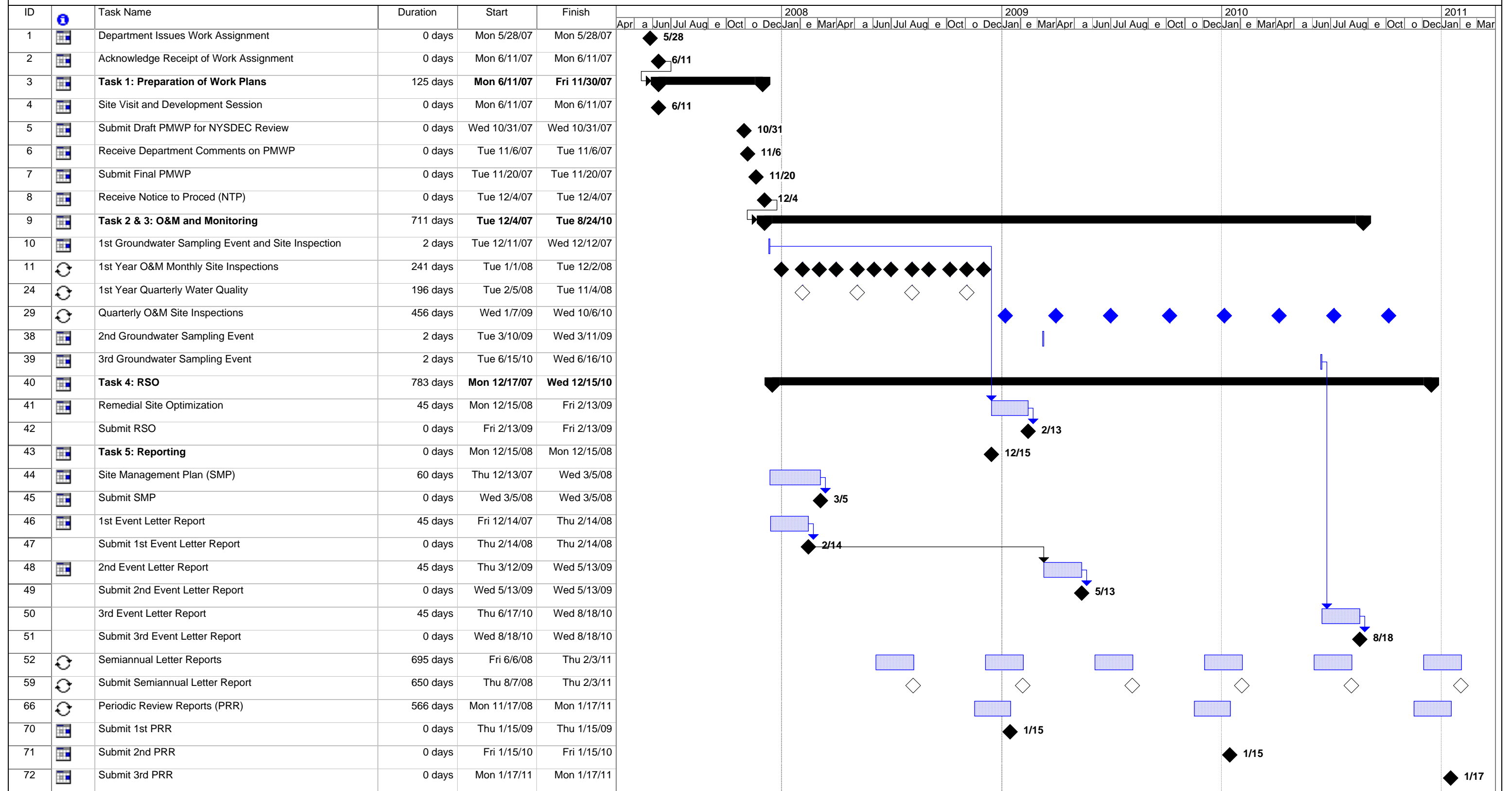


Figure 3 Project organization chart – Perfection Plating

Figure 4 Project Schedule
Site Management
Perfection Plating - NYSDEC Standby Contract
Site No. 4-01-037



Project: Perfection Plating
Date: January 2008

Task
Split

Progress	Milestone
100%	100%

Summary

Project Summary

External Tasks

External Milestone

Deadline



Appendix A

Work Assignment Budget Schedule 2.11

Schedule 2.11 (a)
Summary of Work Assignment Price

Work Assignment Number

D004441-24

1)	Direct Salary Costs (Schedules 2.10(a) and 2.11(b))	\$27,102
2)	Indirect Costs (Schedule 2.10(g))	\$41,316
3)	Direct Non-Salary Costs (Schedule 2.10(b)(c)(d) and 2.11(c)(d))	\$10,114
4)	Subcontract Costs	

Cost-Plus-Fixed-Fee Subcontracts (Schedule 2.10(e) and 2.11(e))

<u>Name of Subcontractor</u>		<u>Services To Be Performed</u>	<u>Subcontract Price</u>
i)			\$0
ii)			\$0
A)	Total Cost-Plus-Fixed-Fee Subcontracts		\$0

Unit Price Subcontracts (Schedule 2.10(f) and 2.11(f))

<u>Name of Subcontractor</u>		<u>Services To Be Performed</u>	<u>Subcontract Price</u>
i)	Hampton-Clarke Veritech	Laboratory Other Analyses	\$2,346
ii)	Chemworld	Data Validation	\$594
B)	Total Unit Price Subcontracts		\$2,940
5)	Subcontract Management Fee		\$147

6)	Total Subcontract Costs	\$3,087
7)	Fixed Fee (Schedule 2.10(h))	\$4,789
8)	Total Work Assignment Price (Lines 1 + 2 + 3 + 6 + 7)	\$86,408

Engineer/Contract #
Project Name
Work Assignment No.

EA Engineering, P.C. D004441
Perfection Plating
D004441-24

Date Prepared 17-Oct-07

Schedule 2.11 (b)
Direct Labor Hours Budgeted

<i>Labor Classification</i>	<i>IX</i>	<i>VIII</i>	<i>VII</i>	<i>VI</i>	<i>V</i>	<i>IV</i>	<i>III</i>	<i>II</i>	<i>I</i>	<i>Admin.</i>	<i>Total Direct Labor Hrs.</i>
2007 Average Salary Rates		64.15	54.14	48.80	44.55	35.55	25.84	21.83	17.11		
2008 Average Salary Rates		66.07	55.76	50.26	45.89	36.62	26.62	22.48	17.62		
2009 Average Salary Rates		68.06	57.44	51.77	47.26	37.71	27.41	23.16	18.15		
2010 Average Salary Rates		70.10	59.16	53.33	48.68	38.85	28.24	23.85	18.70		
Task 1 - 2007				2		8	16	32	16	0	74
Task 1 - 2008										5	5
Task 1 - 2009										5	5
Task 1 - 2010										5	5
<i>Task 1 Total Hours</i>	0	0	0	2	0	8	16	32	16	15	89
<i>Task 1 Direct Labor Total Cost</i>											\$2,158.93
Task 2 - 2007									10	0	10
Task 2 - 2008				5		5	24	33	50	2	119
Task 2 - 2009				5		5	24	33	20	2	89
Task 2 - 2010				5		5	24	34	20	2	90
<i>Task 2 Total Hours</i>	0	0	0	15	0	15	72	100	100	6	308
<i>Task 2 Direct Labor Total Cost</i>											\$7,562.59
Task 3 - 2007				2		4				0	6
Task 3 - 2008				2		10	12	35	35	4	98
Task 3 - 2009				2		10	12	35	30	4	93
Task 3 - 2010				2		10	12	35	30	4	93
<i>Task 3 Total Hours</i>	0	0	0	8	0	34	36	105	95	12	290
<i>Task 3 Direct Labor Total Costs</i>											\$7,102.20
Task 4 - 2007										0	0
Task 4 - 2008											0
Task 4 - 2009				4		24	40	40	16	4	128
Task 4 - 2010										4	4
<i>Task 4 Total Hours</i>	0	0	0	4	0	24	40	40	16	8	132
<i>Task 4 Direct Labor Total Costs</i>											\$3,703.60
Task 5 - 2007										0	0
Task 5 - 2008						25	10	60	12	6	113
Task 5 - 2009						12	10	30	12	6	70
Task 5 - 2010						12	10	30	12	6	70
<i>Task 5 Total Hours</i>	0	0	0	0	0	49	30	120	36	18	253
<i>Task 5 Direct Labor Total Cost</i>											\$6,574.32
Total Hours 2007	0	0	0	4	0	12	16	32	26	0	90
Total Hours 2008	0	0	0	7	0	40	46	128	97	17	335
Total Hours 2009	0	0	0	11	0	51	86	138	78	21	385
Total Hours 2010	0	0	0	7	0	27	46	99	62	21	262
<i>Total Hours fo the WA</i>											1,072
<i>Direct Labor Cost (\$) 2007</i>	\$0.00	\$0.00	\$0.00	\$195.20	\$0.00	\$426.60	\$413.44	\$698.56	\$444.86	\$0.00	\$2,178.66
<i>Direct Labor Cost (\$) 2008</i>	\$0.00	\$0.00	\$0.00	\$351.85	\$0.00	\$1,464.66	\$1,224.30	\$2,878.07	\$1,709.46	\$514.58	\$8,142.91
<i>Direct Labor Cost (\$) 2009</i>	\$0.00	\$0.00	\$0.00	\$569.49	\$0.00	\$1,923.46	\$2,357.57	\$3,196.00	\$1,415.86	\$530.02	\$9,992.40
<i>Direct Labor Cost (\$) 2010</i>	\$0.00	\$0.00	\$0.00	\$373.28	\$0.00	\$1,048.85	\$1,298.86	\$2,361.57	\$1,159.19	\$545.92	\$6,787.66
<i>Total Direct Labor Cost \$</i>											\$27,101.64

* For multiple years use one average salary rate row for each year and each years subtotal Labor Cost.

Schedule 2.11 (b-1)
Direct Administrative Labor Hours Budgeted

Labor Classification	IX	VIII	VII	VI	V	IV	III	II	I	Total No. of Direct Labor Hrs.
2007 Average Salary Rates*		64.15	54.14	48.80	44.55	35.55	25.84	21.83	17.11	
2008 Average Salary Rates*		66.07	55.76	50.26	45.89	36.62	26.62	22.48	17.62	
2009 Average Salary Rates*		68.06	57.44	51.77	47.26	37.71	27.41	23.16	18.15	
2010 Average Salary Rates*		70.10	59.16	53.33	48.68	38.85	28.24	23.85	18.70	
Task 1 - 2007										0
Task 1 - 2008						1		4		5
Task 1 - 2009						1		4		5
Task 1 - 2010						1		4		5
Task 1 Total Hours	0	0	0	0	0	3	0	12	0	15
Task 1 Direct Administrative Total Cost										\$391.17
Task 2 - 2007										0
Task 2 - 2008								2		2
Task 2 - 2009								2		2
Task 2 - 2010								2		2
Task 2 Total Hours	0	0	0	0	0	0	0	6	0	6
Task 2 Direct Administrative Total Cost										\$139.00
Task 3 - 2007										0
Task 3 - 2008								4		4
Task 3 - 2009								4		4
Task 3 - 2010								4		4
Task 3 Total Hours	0	0	0	0	0	0	0	12	0	12
Task 3 Direct Administrative Total Costs										\$277.99
Task 4 - 2007										0
Task 4 - 2008								4		4
Task 4 - 2009								4		4
Task 4 - 2010								4		4
Task 4 Total Hours	0	0	0	0	0	0	0	12	0	12
Task 4 Direct Administrative Total Cost										\$277.99
Task 5 - 2007										0
Task 5 - 2008						2		4		6
Task 5 - 2009						2		4		6
Task 5 - 2010						2		4		6
Task 5 Total Hours	0	0	0	0	0	6	0	12	0	18
Task 5 Direct Administrative Total Cost										\$504.35
Total Hours - 2007	0	0	0	0	0	0	0	0	0	0
Total Hours - 2008	0	0	0	0	0	3	0	18	0	21
Total Hours - 2009	0	0	0	0	0	3	0	18	0	21
Total Hours - 2010	0	0	0	0	0	3	0	18	0	21
Total Hours for the WA										63
Direct Labor Cost (\$) 2007	\$0.00	\$0.00	\$0.00	\$0.00	\$0.00	\$0.00	\$0.00	\$0.00	\$0.00	\$0.00
Direct Labor Cost (\$) 2008	\$0.00	\$0.00	\$0.00	\$0.00	\$0.00	\$109.85	\$0.00	\$404.73	\$0.00	\$514.58
Direct Labor Cost (\$) 2009	\$0.00	\$0.00	\$0.00	\$0.00	\$0.00	\$113.14	\$0.00	\$416.87	\$0.00	\$530.02
Direct Labor Cost (\$) 2010	\$0.00	\$0.00	\$0.00	\$0.00	\$0.00	\$116.54	\$0.00	\$429.38	\$0.00	\$545.92
Total Direct Administrative Labor Cost (\$)										\$1,590.51

* For multiple years use one average salary rate row for each year and each years subtotal Labor Cost.

Contract/Project administrative hours would include (subject to contract allowability) but not necessarily be limited to the following activities:

- 1) **Work Plan Budget Development**
 - Conflict of Interest Check
 - Budget schedules & supporting documentation
- 2) **Review work assignment (WA) progress**
 - Conduct progress reviews
 - Prepare monthly project report
 - Update WA progress schedule
 - Prepare M/WBE Utilization Report
- 3) **Contractor Application for Payment (CAP)**
 - Oversee and prepare monthly CAP

- 4) **Program Management**
 - Prepare monthly cost control report
 - Cost control reviews
 - Staffing plans
 - Manage subcontracts
 - NSPE list update
 - Equipment inventory
- 5) **Miscellaneous**
 - Conduct Health and Safety Reviews
 - Word processing and graphic artists
 - Report editing

Contract/Project administration hours would not include:

- QA/QC reviews
- Technical oversight by management
- Develop subcontracts
- Work plan development
- Review of deliverables

Schedule 2.11 (c)

Direct Non-Salary Costs

Engineer: EA Engineering, P.C.

Contract ID: D004441

Project Name: Perfection Plating

Work Assignment No.: D004441-24

Item	Maximum Reimbursement Rate	(Specify Unit)	Est. No. of Units	Total Estimated Cost (\$)
A) In-house Costs				
1) 8.5 x 11 print/copy (black and white)	\$0.05	\$/page	2,600	\$130.00
2) 8.5 x 11 print/copy (color)	\$0.75	\$/page	400	\$300.00
Full Size Construction Drawings (i.e. permit,				
3) contract, as-builts)	\$1.80	each	0	\$0.00
4) Reproduction - Bid Documents	\$0.10	each	0	\$0.00
5) Reproduction - Full Size Construction	\$0.30	each	0	\$0.00
6) Report Cover Sets	\$1.75	each	10	\$17.50
7) Microcomputer GIS (Arc/info)	\$6.25	\$/hour	28	\$175.00
8) Microcomputer Graphics/CADD	\$1.50	\$/hour	0	\$0.00
9) Personal Protective Equipment (Level C)	\$27.00	\$/man-day	0	\$0.00
10) Personal Protective Equipment (Level D)	\$13.00	\$/man-day	60	\$780.00
11) Equipment Purchased Under Contract	\$0.00	Lump Sum	1	\$0.00
12) Consultant Owned Equipment	\$3,371.88	Lump Sum	1	\$3,371.88
13) Vendor Rented Equipment	\$0.00	Lump Sum	1	\$0.00
14) Site Dedicated Equipment	\$0.00	Lump Sum	1	\$0.00
15) Consumable Supplies	\$716.00	Lump Sum	1	\$716.00
16) Shipping - Submittals	\$50.00	each	8	\$400.00
17) Shipping - Samples	\$50.00	each	9	\$450.00
			In-house Costs Total	\$6,340.38
B) Miscellaneous				
Travel:				
Per diem: Albany County	\$36.75	travel day	0	\$0.00
Per diem: Albany County	\$49.00	day	6	\$294.00
Lodging: Albany County	\$103.00	night	6	\$618.00
Local Mileage:	\$0.485	mile	5,900	\$2,861.50
			Miscellaneous Total	\$3,773.50
Total Direct Non-Salary Costs				\$10,113.88

*See Schedule 2.10(b) for rates.

Work Assignment No. D004441-24

Schedule 2.11(d) 1

Equipment Purchased Under the Contract

Item	Est. Purchase Price (\$)	O&M Rate* (\$/Month)	Term of Usage (Months)	Est. Usage Cost (\$) (Col. 2 + [3 x 4])
				\$0.00
				\$0.00
			TOTAL	\$0.00

* The O&M rate is reimbursable only while the equipment is in the custody of the Engineer.

Schedule 2.11(d) 2

Maximum Reimbursement Rates for Consultant Owned Equipment

Item	Purchase Price (\$ x 85%)	Usage Rate* (\$/Unit of Time)	Capital Recovery** Rate (\$/Unit of Time)	O&M Rate (\$/Unit of Time)	Est. Usage (Unit of Time)	Est. Usage Cost (\$) (Col. 3 x 6)
Task 2						
Laptop Computer		\$3.73 Hour			150	\$559.50
					Task 2 Total	\$559.50
Task 3						
Generator 3,000 - 5,000 watts		\$45.00 Day			6	\$270.00
Grundfos Redi-Flo2 2-in. Pump 100 ft with Controller		\$95.00 Day			6	\$570.00
Solinst 122 or Heron H.01L Interface Probe 100 ft		\$45.00 Day			10	\$450.00
YSI 6820 with Flow Cell with NEW 650 Display		\$150.00 Day			10	\$1,500.00
Laptop Computer		\$3.73 Hour			6	\$22.38
					Task 3 Total	\$2,812.38
					TOTAL	\$3,371.88

Work Assignment No. D004441-24

Schedule 2.11(d) 3

Maximum Reimbursement Rates for Vendor-Rented Equipment

Item	Reimbursement Rate (\$)	Unit of Time	Est. Usage (Unit of Time)	Est. Usage Cost (\$) (Col. 2 x 3)
-------------	--------------------------------	---------------------	--------------------------------------	----------------------------------------------

TOTAL \$0.00

* Reimbursement will be made at the Maximum Reimbursement rate or the actual rental rate, whichever is less.

Work Assignment No. D004441-24

Schedule 2.11(d) 4

Site-Dedicated Equipment

<u>Item</u>	<u>Estimated Quantity</u>	<u>Unit Cost (\$)</u>	<u>Total Budgeted Cost (Col . 2 x 3) (\$)</u>
-------------	---------------------------	-----------------------	-----------------------------------------------

TOTAL			<u>\$0.00</u>
--------------	--	--	----------------------

Work Assignment No. D004441-24

Schedule 2.11(d) 5

Consumable Supplies

Item	Estimated Quantity	Unit Cost (\$)	Total Budgeted Cost (Col . 2 x 3) (\$)
Task 2			
Nitrile Gloves	3	\$17.50	\$52.50
LVE	100	\$0.80	\$80.00
		Task 2 Total	\$132.50
Task 3			
Log Book	1	\$18.00	\$18.00
Nitrile Gloves	3	\$17.50	\$52.50
Tubing	900	\$0.25	\$225.00
LVE	360	\$0.80	\$288.00
		Task 3 Total	\$583.50
		TOTAL	\$716.00

Schedule 2.11(e)

Cost-Plus-Fixed-Fee Subcontracts

Work Assignment Number D004441-24

Name of Subcontractor	0	Services to be Performed	0	Subcontract Price
				\$0.00

A) Direct Salary Costs

Professional Responsibility Level	Labor Classification		Ave. Reimbursement Rate (\$/Hr.)	Max. Reimbursement Rate (\$/Hr.)	Est. No. of Hours	Total Est. Direct Salary Cost (Ave. Reimb. Rate x Est. # of Hrs.)	
Task 2							
	0		0	\$0.00	\$0.00	0	\$0.00
#REF!		#REF!	#REF!	#REF!	#REF!	#REF!	#REF!
#REF!		#REF!	#REF!	#REF!	#REF!	#REF!	#REF!
#REF!		#REF!	#REF!	#REF!	#REF!	#REF!	#REF!
#REF!		#REF!	#REF!	#REF!	#REF!	#REF!	#REF!
	0		0	\$0.00	\$0.00	0	\$0.00
Task 5							
	0		0	\$0.00	\$0.00	0	\$0.00
Total Direct Salary Costs							#REF!

Footnotes:

- 1) The labor rate averages and maximums shall be adjusted by a rate equal to the increase in the CPI index CUURA101SAO-"All Urban Consumers-New York-Northern N.J.-Long Island" for the previous year. This index is published by the U.S. Department of Labor's Bureau of Labor Statistics. The adjustment will be calculated every January and will be effective for subsequent work assignment billing and budgeting purposes.
- 2) Schedule 2.10(a) may be re-negotiated after four (4) years at the request of either party. Any revision as a result of renegotiation will be subject to the approval of the Office of the State Comptroller.
- 3) The maximum annual escalation is limited to 5%.
- 4) Reimbursement will be limited to the lesser of either of the individual's actual hourly rate or the maximum rate for each labor category.
- 5) Reimbursement will be limited to the maximum reimbursement rate for the professional responsibility level of the actual work performed.
- 6) Only those labor classifications indicated with an asterisk will be entitled to overtime.

- 7) Reimbursement for technical time of principals, owners, and officers will be limited to the maximum reimbursement rate of that category, the actual hourly labor rate paid, or the State M-6 rate, whichever is lower.
- 8) Maximum reimbursement rates may be exceeded for work assignment activities that are under the jurisdiction of the Schedule of Prevailing Wage Rates set by the New York State Department of Labor.

Schedule 2.11(e)
(continued)

B) Indirect Costs

Indirect costs shall be paid based on a percentage of direct salary costs incurred which shall not exceed a maximum of
117.00% or the actual rate calculated in accordance with 48 CFR Federal Acquisition Regulation, whichever is lower.

Amount budgeted for indirect costs is:

Total Indirect Costs \$0.00

C) Maximum Reimbursement Rates for Direct Non-Salary Costs

<i>Item</i>		<i>Max. Reimbursement Rate (Specify Unit)</i>	<i>Est. # of Units</i>	<i>Total Estimated Cost</i>
1) Travel				
Per diem:	Orange County	\$44.00	day 0	\$0.00
Lodging:	Orange County	\$98.00	night 0	\$0.00
Local Mileage:		\$0.485	mile 0	\$0.00
Travel Total				\$0.00
2) Supplies				
Survey Rental Equipment		\$65.00	day 0	\$0.00
CAD Rental		\$15.00	hour 0	\$0.00
GPS NYS Plane Coordinates		\$1,200.00	lump sum 0	\$0.00
Level D Protective Equipment		\$15.00	day 0	\$0.00
Postage/Repro/Phone		\$150.00	lump sum 0	\$0.00
Supplies Total				\$0.00
Total Direct Non-Salary Costs				\$0.00

D) Fixed Fee 15.00%

The fixed fee is:

Total Fixed Fee \$0.00

Schedule 2.11(e)

Cost-Plus-Fixed-Fee Subcontracts

Work Assignment Number D004441-24

Name of Subcontractor	Services to be Performed	Subcontract Price
	Engineering Professional Services	\$0.00

A) Direct Salary Costs

Professional Responsibility Level	Labor Classification	Ave. Reimbursement Rate (\$/Hr.)	Max. Reimbursement Rate (\$/Hr.)	Est. No. of Hours	Total Est. Direct Salary Cost (Ave. Reimb. Rate x Est. # of Hrs.)
					\$0.00
					\$0.00
Total Direct Salary Costs					\$0.00

Footnotes:

- 1) The labor rate averages and maximums shall be adjusted by a rate equal to the increase in the CPI index CUURA101SAO-"All Urban Consumers-new York-Northern N.J.-Long Island" for the previous year. This index is published by the U.S. Department of Labor's
- 2) Schedule 2.10(a) may be re-negotiated after four (4) years at the request of either party. Any revision as a result of renegotiation will be subject to the approval of the Office of the State Comptroller.
- 3) The maximum annual escalation is limited to 5%.
- 4) Reimbursement will be limited to the lesser of either of the individual's actual hourly rate or the maximum rate for each labor category.
- 5) Reimbursement will be limited to the maximum reimbursement rate for the professional responsibility level of the actual work performed.
- 6) Only those labor classifications indicated with an asterisk will be entitled to overtime.
- 7) Reimbursement for technical time of principals, owners, and officers will be limited to the maximum reimbursement rate of that category, the actual hourly labor rate paid, or the State M-6 rate, whichever is lower.
- 8) Maximum reimbursement rates may be exceeded for work assignment activities that are under the jurisdiction of the Schedule of Prevailing Wage Rates set by the New York State Department of Labor.

Schedule 2.11(e)
(continued)

B) Indirect Costs

Indirect costs shall be paid based on a percentage of direct salary costs incurred which shall not exceed a maximum of **133.87%** or the actual rate calculated in accordance with 48 CFR Federal Acquisition Regulation, whichever is lower.

Amount budgeted for indirect costs is:

Total Indirect Costs \$0.00

C) Maximum Reimbursement Rates for Direct Non-Salary Costs

<i>Item</i>		<i>Max. Reimbursement Rate (Specify Unit)</i>	<i>Est. # of Units</i>	<i>Total Estimated Cost</i>
1) Travel				
Per diem:	Orange County	\$44.00	day 0	\$0.00
Lodging:	Orange County	\$98.00	night 0	\$0.00
Local Mileage:		\$0.485	mile 0	\$0.00
			Travel Total	\$0.00
2) Supplies				
				\$0.00
				\$0.00
				\$0.00
				\$0.00
				\$0.00
			Supplies Total	\$0.00
Total Direct Non-Salary Costs				\$0.00

D) Fixed Fee 7.00%

The fixed fee is:

Total Fixed Fee \$0.00

Schedule 2.11(f)

Unit Price Subcontracts
Work Assignment Number D004441-24

Name of Subcontractor		Services to be Performed		Subcontract Price	Management Fee
0		0		\$0.00	\$0.00
Item	Max. Reimbursement Rate	(Specify Unit)	Est. No. of Units	Total Est. Cost	
	0	\$0.00	0	0	\$0.00
Subtotal Subcontract Price					<u>\$0.00</u>
Subcontract Management Fee					<u>\$0.00</u>
TOTAL					<u>\$0.00</u>

Schedule 2.11(f)

Unit Price Subcontracts

Work Assignment Number D004441-24

Name of Subcontractor
Hampton-Clarke Veritech

Services to be Performed
Laboratory Other Analyses

Subcontract Price
\$2,346.00

Management Fee
\$117.30

Item	Max. Reimbursement Rate (Specify Unit)		Est. No. of Units	Total Est. Cost
Task 3				
Total Chromium analysis of aqueous samples by USEPA				
Method 6010B	\$10.00	each	51	\$510.00
Hexavalent Chromium analysis of aqueous samples by USEPA				
Method 7196A	\$36.00	each	51	\$1,836.00
Subtotal Subcontract Price				<u>\$2,346.00</u>
Subcontract Management Fee				<u>\$117.30</u>
TOTAL				\$2,463.30

Schedule 2.11(f)

Unit Price Subcontracts

Work Assignment Number D004441-24

Name of Subcontractor		Services to be Performed		Subcontract Price	Management Fee
0		0		\$0.00	\$0.00
Item		Max. Reimbursement Rate	(Specify Unit)	Est. No. of Units	Total Est. Cost
Task 2	0	\$0.00	0	0	\$0.00
Subtotal Subcontract Price					<u>\$0.00</u>
Subcontract Management Fee					<u>\$0.00</u>
TOTAL					<u>\$0.00</u>

Schedule 2.11(f)

Unit Price Subcontracts

Work Assignment Number D004441-24

Name of Subcontractor		Services to be Performed		Subcontract Price	Management Fee
Chemworld		Data validation		\$594.00	\$29.70
Item	Max. Reimbursement Rate (Specify Unit)			Est. No. of Units	Total Est. Cost
Task 3					
Data Validation	\$6.00	each		99	\$594.00
Subtotal Subcontract Price					\$594.00
Subcontract Management Fee					\$29.70
TOTAL					\$623.70

Schedule 2.11(f)

Unit Price Subcontracts

Work Assignment Number D004441-24

Name of Subcontractor		Services to be Performed	Subcontract Price	Management Fee
			\$0.00	\$0.00
Item	Max. Reimbursement Rate	(Specify Unit)	Est. No. of Units	Total Est. Cost
Subtotal Subcontract Price				<u> \$0.00 </u>
Subcontract Management Fee				<u> \$0.00 </u>
TOTAL				<u> \$0.00 </u>

SCHEDULE 2.11(g)

**MONTHLY COST CONTROL REPORT
SUMMARY OF FISCAL INFORMATION**

Engineer: EA Engineering, P.C.
Contract No: D004441
Project Name: Perfection Plating
Work Assignment No.: D004441
Task#/Name: Summary
Complete:

Page: 1 of 1
Date Prepared: 17-Oct-07
Billing Period:
Invoice No.

<i>Expenditure Category</i>	<i>A</i>	<i>B</i>	<i>C</i>	<i>D</i>	<i>E</i>	<i>F</i>	<i>G</i>	<i>H</i>
	<i>Costs Claimed This Period</i>	<i>Paid To Date</i>	<i>Total Disallowed To Date</i>	<i>Total Costs Incurred to Date (A+B+C)</i>	<i>Estimated Costs To Completion</i>	<i>Estimated Total Work Assignment Price (A+B+E)</i>	<i>Approved Budget</i>	<i>Estimated Under/Over (G-F)</i>
1 Direct Salary Costs				\$0.00		\$27,101.64		(\$27,101.64)
2 Indirect Costs				\$0.00		\$41,316.45		(\$41,316.45)
3 Subtotal Direct Salary Costs and Indirect Costs				\$0.00		\$68,418.08		(\$68,418.08)
4 Travel				\$0.00		\$3,773.50		(\$3,773.50)
5 Other Non-Salary Costs				\$0.00		\$6,340.38		(\$6,340.38)
6 Subtotal Direct Non-Salary Costs				\$0.00		\$10,113.88		(\$10,113.88)
7 Subcontractors				\$0.00		\$3,087.00		(\$3,087.00)
8 Total WA Cost				\$0.00		\$81,618.96		(\$81,618.96)
9 Fixed Fee 7%				\$0.00		\$4,789.27		(\$4,789.27)
10 Total WA Price				\$0.00		\$86,408.23		(\$86,408.23)

Program Manager(Engineer) _____

Date: _____

SCHEDULE 2.11(g)

**MONTHLY COST CONTROL REPORT
SUMMARY OF FISCAL INFORMATION**

Engineer: EA Engineering, P.C.
Contract No: D004441
Project Name: Perfection Plating
Work Assignment No.: D004441-24
Task#/Name: Task 1 - Work Plans
Complete:

Page: 1 of 1
Date Prepared: 17-Oct-07
Billing Period:
Invoice No.

<i>Expenditure Category</i>	<i>A</i>	<i>B</i>	<i>C</i>	<i>D</i>	<i>E</i>	<i>F</i>	<i>G</i>	<i>H</i>
	<i>Costs Claimed This Period</i>	<i>Paid To Date</i>	<i>Total Disallowed To Date</i>	<i>Total Costs Incurred to Date (A+B+C)</i>	<i>Estimated Costs To Completion</i>	<i>Estimated Total Work Assignment Price (A+B+E)</i>	<i>Approved Budget</i>	<i>Estimated Under/Over (G-F)</i>
1 Direct Salary Costs				\$0.00		\$2,158.93		(\$2,158.93)
2 Indirect Costs				\$0.00		\$3,291.29		(\$3,291.29)
3 Subtotal Direct Salary Costs and Indirect Costs				\$0.00		\$5,450.22		(\$5,450.22)
4 Travel				\$0.00		\$0.00		\$0.00
5 Other Non-Salary Costs				\$0.00		\$517.00		(\$517.00)
6 Subtotal Direct Non-Salary Costs				\$0.00		\$517.00		(\$517.00)
7 Subcontractors				\$0.00		\$0.00		\$0.00
8 Total WA Cost				\$0.00		\$5,967.22		(\$5,967.22)
9 Fixed Fee 7%				\$0.00		\$381.52		(\$381.52)
10 Total WA Price				\$0.00		\$6,348.74		(\$6,348.74)

Program Manager(Engineer) _____

Date: _____

SCHEDULE 2.11(g)

**MONTHLY COST CONTROL REPORT
SUMMARY OF FISCAL INFORMATION**

Engineer: EA Engineering, P.C.
Contract No: D004441
Project Name: Perfection Plating
Work Assignment No.: D004441-24
Task#/Name: Task 2 - Treatment Plant Operations and Maintenance
Complete:

Page: 1 of 1
Date Prepared: 17-Oct-07
Billing Period:
Invoice No.

<i>Expenditure Category</i>	<i>A</i>	<i>B</i>	<i>C</i>	<i>D</i>	<i>E</i>	<i>F</i>	<i>G</i>	<i>H</i>
	<i>Costs Claimed This Period</i>	<i>Paid To Date</i>	<i>Total Disallowed To Date</i>	<i>Total Costs Incurred to Date (A+B+C)</i>	<i>Estimated Costs To Completion</i>	<i>Estimated Total Work Assignment Price (A+B+E)</i>	<i>Approved Budget</i>	<i>Estimated Under/Over (G-F)</i>
1 Direct Salary Costs				\$0.00		\$7,562.59		(\$7,562.59)
2 Indirect Costs				\$0.00		\$11,529.17		(\$11,529.17)
3 Subtotal Direct Salary Costs and Indirect Costs				\$0.00		\$19,091.77		(\$19,091.77)
4 Travel				\$0.00		\$2,425.00		(\$2,425.00)
5 Other Non-Salary Costs				\$0.00		\$1,326.00		(\$1,326.00)
6 Subtotal Direct Non-Salary Costs				\$0.00		\$3,751.00		(\$3,751.00)
7 Subcontractors				\$0.00		\$0.00		\$0.00
8 Total WA Cost				\$0.00		\$22,842.77		(\$22,842.77)
9 Fixed Fee 7%				\$0.00		\$1,336.42		(\$1,336.42)
10 Total WA Price				\$0.00		\$24,179.19		(\$24,179.19)

Program Manager(Engineer) _____

Date: _____

SCHEDULE 2.11(g)

**MONTHLY COST CONTROL REPORT
SUMMARY OF FISCAL INFORMATION**

Engineer: EA Engineering, P.C.
Contract No: D004441
Project Name: Perfection Plating
Work Assignment No.: D004441-24
Task#/Name: Task 3 - Monitoring
Complete:

Page: 1 of 1
Date Prepared: 17-Oct-07
Billing Period:
Invoice No.

<i>Expenditure Category</i>	<i>A</i>	<i>B</i>	<i>C</i>	<i>D</i>	<i>E</i>	<i>F</i>	<i>G</i>	<i>H</i>
	<i>Costs Claimed This Period</i>	<i>Paid To Date</i>	<i>Total Disallowed To Date</i>	<i>Total Costs Incurred to Date (A+B+C)</i>	<i>Estimated Costs To Completion</i>	<i>Estimated Total Work Assignment Price (A+B+E)</i>	<i>Approved Budget</i>	<i>Estimated Under/Over (G-F)</i>
1 Direct Salary Costs				\$0.00		\$7,102.20		(\$7,102.20)
2 Indirect Costs				\$0.00		\$10,827.30		(\$10,827.30)
3 Subtotal Direct Salary Costs and Indirect Costs				\$0.00		\$17,929.50		(\$17,929.50)
4 Travel				\$0.00		\$1,348.50		(\$1,348.50)
5 Other Non-Salary Costs				\$0.00		\$4,011.88		(\$4,011.88)
6 Subtotal Direct Non-Salary Costs				\$0.00		\$5,360.38		(\$5,360.38)
7 Subcontractors				\$0.00		\$3,087.00		(\$3,087.00)
8 Total WA Cost				\$0.00		\$26,376.88		(\$26,376.88)
9 Fixed Fee 7%				\$0.00		\$1,255.06		(\$1,255.06)
10 Total WA Price				\$0.00		\$27,631.94		(\$27,631.94)

Program Manager(Engineer) _____

Date: _____

SCHEDULE 2.11(g)

**MONTHLY COST CONTROL REPORT
SUMMARY OF FISCAL INFORMATION**

Engineer: EA Engineering, P.C.
Contract No: D004441
Project Name: Perfection Plating
Work Assignment No.: D004441-24
Task#/Name: Task 4 - Remedial Site Optimization
Complete:

Page: 1 of 1
Date Prepared: 17-Oct-07
Billing Period:
Invoice No.

<i>Expenditure Category</i>	<i>A</i>	<i>B</i>	<i>C</i>	<i>D</i>	<i>E</i>	<i>F</i>	<i>G</i>	<i>H</i>
	<i>Costs Claimed This Period</i>	<i>Paid To Date</i>	<i>Total Disallowed To Date</i>	<i>Total Costs Incurred to Date (A+B+C)</i>	<i>Estimated Costs To Completion</i>	<i>Estimated Total Work Assignment Price (A+B+E)</i>	<i>Approved Budget</i>	<i>Estimated Under/Over (G-F)</i>
1 Direct Salary Costs				\$0.00		\$3,703.60		(\$3,703.60)
2 Indirect Costs				\$0.00		\$5,646.14		(\$5,646.14)
3 Subtotal Direct Salary Costs and Indirect Costs				\$0.00		\$9,349.73		(\$9,349.73)
4 Travel				\$0.00		\$0.00		\$0.00
5 Other Non-Salary Costs				\$0.00		\$485.50		(\$485.50)
6 Subtotal Direct Non-Salary Costs				\$0.00		\$485.50		(\$485.50)
7 Subcontractors				\$0.00		\$0.00		\$0.00
8 Total WA Cost				\$0.00		\$9,835.23		(\$9,835.23)
9 Fixed Fee 7%				\$0.00		\$654.48		(\$654.48)
10 Total WA Price				\$0.00		\$10,489.71		(\$10,489.71)

Program Manager(Engineer) _____

Date: _____

SCHEDULE 2.11(g)

**MONTHLY COST CONTROL REPORT
SUMMARY OF FISCAL INFORMATION**

Engineer: EA Engineering, P.C.
Contract No: D004441
Project Name: Perfection Plating
Work Assignment No.: D004441-24
Task#/Name: Task 5 - Reporting
Complete:

Page: 1 of 1
Date Prepared: 17-Oct-07
Billing Period:
Invoice No.

<i>Expenditure Category</i>	<i>A</i>	<i>B</i>	<i>C</i>	<i>D</i>	<i>E</i>	<i>F</i>	<i>G</i>	<i>H</i>
	<i>Costs Claimed This Period</i>	<i>Paid To Date</i>	<i>Total Disallowed To Date</i>	<i>Total Costs Incurred to Date (A+B+C)</i>	<i>Estimated Costs To Completion</i>	<i>Estimated Total Work Assignment Price (A+B+E)</i>	<i>Approved Budget</i>	<i>Estimated Under/Over (G-F)</i>
1 Direct Salary Costs				\$0.00		\$6,574.32		(\$6,574.32)
2 Indirect Costs				\$0.00		\$10,022.54		(\$10,022.54)
3 Subtotal Direct Salary Costs and Indirect Costs				\$0.00		\$16,596.86		(\$16,596.86)
4 Travel				\$0.00		\$0.00		\$0.00
5 Other Non-Salary Costs				\$0.00		\$0.00		\$0.00
6 Subtotal Direct Non-Salary Costs				\$0.00		\$0.00		\$0.00
7 Subcontractors				\$0.00		\$0.00		\$0.00
8 Total WA Cost				\$0.00		\$16,596.86		(\$16,596.86)
9 Fixed Fee 7%				\$0.00		\$1,161.78		(\$1,161.78)
10 Total WA Price				\$0.00		\$17,758.64		(\$17,758.64)

Program Manager(Engineer) _____

Date: _____

SCHEDULE 2.11(g) - Supplemental

Cost Control Report For Subcontracts

Engineer: EA Engineering, P.C.
Contract No: D004441
Project Name: Perfection Plating
Work Assignment No.: D004441-24

Page: 1 of 1
Date Prepared: 17-Oct-07
Billing Period:
Invoice No.

<i>Subcontract Name</i>	<i>A Subcontract Costs Claimed this Application Inc. Resubmittals</i>	<i>B Subcontract Costs Approved for Payment on Previous Applications</i>	<i>C Total Subcontract Costs to Date (A plus B)</i>	<i>D Subcontract Approved Budget</i>	<i>E Management Fee Budget</i>	<i>F Management Fee Paid</i>	<i>G Total Costs to Date (C plus F)</i>
1 Hampton-Clarke Veritech			\$0.00	\$2,346.00	\$117.30		
2 Chemworld Environmental, Inc.			\$0.00	\$594.00	\$29.70		\$0.00
3 TOTALS	\$0.00	\$0.00	\$0.00	\$2,940.00	\$147.00		\$0.00

Project Manager _____

Date: _____

Notes:

- 1) Costs listed in Columns A, B, C, & D do not include any management fee costs.
- 2) Management fee is applicable to only properly procured, satisfactorily completed, unit price subcontracts over \$10,000.
- 3) Line 11, Column G should equal Line 7 (Subcontractors), Column D of Summary Cost Control Report.

SCHEDULE 2.11(h)

MONTHLY COST CONTROL REPORT

SUMMARY OF LABOR HOURS

Number of Direct Labor Hours Expended to Date/Estimated Number of Direct Labor Hours to Completion

Engineer: EA Engineering, P.C.
Contract No: D004441
Project Name: Perfection Plating
Work Assignment No.: D004441-24

Date Prepared: 17-Oct-07
Billing Period:
Invoice No.:

NSPE Labor Classification	IX Exp/Est*		VIII Exp/Est		VII Exp/Est		VI Exp/Est		V Exp/Est		IV Exp/Est		III Exp/Est		II Exp/Est		I Exp/Est		Total No. of Direct Labor Hours Exp/Est	
Task 1	0.0		0.0		0.0		2.0		0.0		11.0		16.0		44.0		16.0		89.0	
Task 2	0.0		0.0		0.0		15.0		0.0		15.0		72.0		106.0		100.0		308.0	
Task 3	0.0		0.0		0.0		8.0		0.0		34.0		36.0		117.0		95.0		290.0	
Task 4	0.0		0.0		0.0		4.0		0.0		24.0		40.0		52.0		16.0		136.0	
Task 5	0.0		0.0		0.0		0.0		0.0		55.0		30.0		132.0		36.0		253.0	
																			0.0	
																			0.0	
																			0.0	
																			0.0	
																			0.0	
																			0.0	
																			0.0	
																			0.0	
																			0.0	
																			0.0	
																			0.0	
																			0.0	
																			0.0	
																			0.0	
																			0.0	
																			0.0	
																			0.0	
																			0.0	
																			0.0	
																			0.0	
																			0.0	
																			0.0	
																			0.0	
																			0.0	
																			0.0	
																			0.0	
																			0.0	
																			0.0	
																			0.0	
																			0.0	
																			0.0	
																			0.0	
																			0.0	
																			0.0	
																			0.0	
																			0.0	
																			0.0	
																			0.0	
																			0.0	
																			0.0	
																			0.0	
																			0.0	
																			0.0	
																			0.0	
																			0.0	
																			0.0	
																			0.0	
																			0.0	
																			0.0	
																			0.0	
																			0.0	
																			0.0	

* Expended/Estimated

Schedule 2.11(i)

***Monthly Cost Control Report
Equipment Inventory Control Form****

Engineer EA Engineering, P.C.

Contract No. D004441

- 1) Equipment Description _____
Purchase Date _____
Purchase Price _____
Dates & Location of Use Since Last Report (Identify WA) _____
Present Storage Location _____
Condition of Equipment _____
Responsible Person and Phone No. _____

- 2) Equipment Description _____
Purchase Date _____
Purchase Price _____
Dates & Location of Use Since Last Report (Identify WA) _____
Present Storage Location _____
Condition of Equipment _____
Responsible Person and Phone No. _____

- 3) Equipment Description _____
Purchase Date _____
Purchase Price _____
Dates & Location of Use Since Last Report (Identify WA) _____
Present Storage Location _____
Condition of Equipment _____
Responsible Person and Phone No. _____

- 4) Equipment Description _____
Purchase Date _____
Purchase Price _____
Dates & Location of Use Since Last Report (Identify WA) _____
Present Storage Location _____
Condition of Equipment _____
Responsible Person and Phone No. _____

* This form must be completed for all Department owned equipment in the custody of the Engineer and submitted as part of the Monthly Cost Control Report.

Appendix B

Subcontractor Quotes

NYSDEC Site: Perfection Plating
EA Project No.: 14474.24

Analytical Costs

Aqueous/Non Aqueous (Hampton-Clarke Veritech)

Type of Sample	Field Samples	EPA Method	Unit Cost	Subtotal Cost
Total Chromium analysis of aqueous samples by USEPA Method 6010B	\$10.00	each	42	\$420.00
Hexavalent Chromium analysis of aqueous samples by USEPA Method 7196A	\$36.00	each	42	\$1,512.00
<i>Total Cost</i>				<i>\$1,932</i>

Chemworld

NYSDEC Site: Perfection Plating
EA Project No.: 14474.24

Aqueous/Non Aqueous

Type of Sample	Field Samples	EPA Method	Unit Cost	Subtotal Cost
Hexavalent Chromium by 6196	42	6196	\$6	\$252
Total Chromium by 6010	42	6010	\$6	\$252
Total Cost				\$504

1. A DUSR will be provide within 30 days of receipt of each data package.
2. The data will be validated in accordance with Work Element IV - Analytical Quality Assurance/Quality Control Activities of NYSDEC Standby Contract D004441.

Appendix C

Consultant/Contractor Detailed M/WBE-EEO Utilization Plan

CONSULTANT/CONTRACTOR DETAILED M/WBE-EEO UTILIZATION PLAN
NEW YORK STATE DEPARTMENT OF ENVIRONMENTAL CONSERVATION
(THE M/WBE-EEO GOALS MUST BE PLACED ON THE ENTIRE PROJECT COST)

Consultant Name: EA Engineering, P.C.			
Contract Type/Number: Stand By D004441 D/C Services		Contract Award Date:	
Address: 6712 Brooklawn Parkway	City: Syracuse	State: New York	Zip Code: 13211-2158
Project Owner Name: New York State Department of Environmental Conservation		Project/Grant No.:	
Address: 625 Broadway	City: Albany	NY	Zip Code: 12233
Authorized Representative:		Title:	
Authorized Signature:			
Perfection Plating, Site No. 4-01-037, EA Work Assignment D004441-24			

EEO AND M/WBE CONTRACT SUMMARY (MUNICIPAL FORCE ACCOUNT N/A)

M/WBE CONTRACT SUMMARY			%	Amount	EEO CONTRACT SUMMARY			%	No./Emp.	Wk./Hrs.
1.	Total Dollar Value of the Project		100	\$86,408.00	6.	Total for all Employees		100	10	1,072
2.	Total Dollar Value of the Prime Contract		100	\$86,408.00	7.	Total Goal for Minority Employees		10	0	107
3.	MBE Goal/Amount		15	\$12,961.20	8.	Total Goal for Female Employees		10	4	107
4.	WBE Goal/Amount		5	\$4,320.40	9.	EEO Combined Totals		20	4	272
5.	MBE/WBE Combined Totals		20	\$17,281.60						

Office of Minority & Women's Business Programs Use Only

Proposed Goals		Date Approved	Date Disapproved	Initials
MBE (%)	EEO-Minorities (%)			
WBE (%)	EEO-Minorities (%)			

SECTION I - MBE INFORMATION:

In order to achieve the MBE Goals, New York State Certified MINORITY-OWNED firms are expected to participate in the following manner

MBE Firm	Projected MBE Contract Amount and Award Date	Description of Work MBE	Contract Schedule/Start Date(s)	Contract Payment Schedule	Project Completion Date
Name:					
Address:					
City:					
State/Zip Code:	DATE:				
Telephone No.:	TBD				
Name:					
Address:					
City:					
State/Zip Code:	DATE:				
Telephone No.:	TBD				
Name:					
Address:					
City:					
State/Zip Code:	DATE:				
Telephone No.:	TBD				

SECTION II - WBE INFORMATION:

In order to achieve the WBE Goals, New York State Certified WOMEN-OWNED firms are expected to participate in the following manner

WBE Firm	Projected WBE Contract Amount and Award Date	Description of Work WBE	Contract Schedule/Start Date(s)	Contract Payment Schedule	Project Completion Date
Name: Hampton-Clarke Veritech	\$2,346.00	Laboratory Other Analyses			
Address: 175 Route 46 West					
City: Fairfield					
State/Zip Code: NJ 07004	DATE:				
Telephone No.: (973)-244-9770	TBD				
Name: Chemworld Environmental	\$594.00	Data Validation			
Address: 14 Orchard Way North					
City: Rockville					
State/Zip Code: MD 20854	DATE:				
Telephone No.: (301) 294-6144	TBD				
Name:					
Address:					
City:					
State/Zip Code:	DATE:				
Telephone No.:	TBD				

SECTION III - EEO INFORMATION: In order to achieve the EEO Goals, Minorities and Females are expected to be employed in the following job categories for the specified amount of work hours.

		All Employees		Minority Employees			
Job Categories	Total Work Hours of Contract	Male	Female	African-American	Asian	Native American	Hispanic
Officials/ Managers NSPE VI/V/IV	159	159	0	0	0	0	0
Professionals NSPE III/II/I	854	747	107	0	0	0	0
Technicians	0	0	0	0	0	0	0
Sales Workers	0	0	0	0	0	0	0
Office/Clerical NSPE III/II/I	59	0	59	0	0	0	0
Craftsman	0	0	0	0	0	0	0
Laborers	0	0	0	0	0	0	0
Services/ Workers	0	0	0	0	0	0	0
Totals	1,072	906	166	0	0	0	0