



FACT SHEET

State Superfund Program

Receive Site Fact Sheets by *Email*. See "For More Information" to Learn How.

Site Name: BASF - Manufacturing Plant
DEC Site #: 442027
Address: 36 Riverside Avenue
Rensselaer, NY 12144

Have questions?
See
"Who to Contact"
Below

Remedy Proposed for State Superfund Site; Public Comment Period and Public Meeting Announced

Public Meeting, Wednesday, 2/24/2016 at 6:00 PM
Rensselaer City Hall at 62 Washington Street

NYSDEC invites you to a public meeting to discuss the remedy proposed for the site. You are encouraged to provide comments at the meeting, and during the 30-day comment period described in this fact sheet.

The public is invited to comment on a remedy proposed by the New York State Department of Environmental Conservation (NYSDEC) related to the BASF - Manufacturing Plant site ("site") located at 36 Riverside Avenue, Rensselaer, Rensselaer County. Please see the map for the site location.

Documents related to the cleanup of this site can be found at the location(s) identified below under "Where to Find Information."

How to Comment

NYSDEC is accepting written comments about the proposed plan for 30 days, from **February 11, 2016** through **March 11, 2016**. The proposed plan is available for review at the location(s) identified below under "Where to Find Information." Please submit comments to the NYSDEC project manager listed under Project Related Questions in the "Who to Contact" area below.

The site is listed as a Class "2" site in the State Registry of Inactive Hazardous Waste Sites (list of State Superfund sites). A Class 2 site represents a significant threat to public health or the environment; action is required.

Proposed Remedial Action Plan

The remedy proposed for the site includes:

This proposed remedial action plan (PRAP) addresses the environmental contamination which resulted from release of dye waste containing chlorinated solvents, primarily chlorobenzenes, and metals through several production sewer and storm water outfalls that discharged to the Hudson River. This area, referred to as Operable Unit 02 Hudson River sediment and off-site areas (OU 02) is the subject of this PRAP.

The areal extent of OU 02 is shown on Figure 1.

The BASF Manufacturing Plant is referred to as Operable Unit 01 Main Plant (OU 01). A Record of Decision was issued September 11, 2003 for OU 01.

Additional Details

The Department has selected dredging to remove the contaminated sediment, including restoring the dredged areas with appropriate riverbed material (acting as a cover system). Dredged sediments will be disposed off-site at a facility permitted to accept the material. Some sediment may be treated on the BASF site prior to off-site disposal. Monitoring of other areas being covered by natural deposition has also been selected.

Summary of the Investigation

Based on the results of the investigation of the off-site areas of the BASF Manufacturing Plant Site, the presence of volatile organics, metals and poly-chlorinated biphenyls (PCBs) have contaminated Hudson River sediment. The sediment contamination presents a significant threat to fish and wildlife. The primary contaminants of concern which will drive the cleanup of sediment are chlorobenzenes and lead. BASF will be performing the cleanup. The estimated cost to implement the remedy is \$41,300,000.

NYSDEC developed the proposed remedy after reviewing the detailed investigation of the site and evaluating the remedial options in the "feasibility study" submitted under New York's State Superfund Program by BASF Corporation.

Next Steps

NYSDEC will consider public comments as it finalizes the remedy for the site. The selected remedy will be described in a document called a "Record of Decision" that will explain why the remedy was selected and respond to public comments. A detailed design of the selected remedy will then be prepared, and the cleanup will be performed.

NYSDEC will keep the public informed throughout the investigation and cleanup of the site.

Background

LOCATION: The BASF Manufacturing Plant Site is located within the City of Rensselaer. The site is located approximately 0.25 miles west of the intersection of Routes 9 and 9J adjacent to the Hudson River.

SITE FEATURES: The 45.32 acre site (OU 01) is an open area. The off-site area includes industrial areas, residential areas, railroad tracks and the Hudson River.

CURRENT ZONING AND LAND USE: The vacant OU 01 area is zoned industrial. The OU 02 off-site areas include a residential neighborhood located to the north (Fort Crailo), the Albany Molecular Research, Inc. (former Sterling Drug Site 1, Site 442009, industrial) also to the north, Railroad (Amtrak/CSX) tracks to the east, the BASF Closed Landfill (Site V00521, industrial) to the south east, the Rensselaer Iron and Steel Inc. (industrial) and Albany Port Commission parking lot to the south. The Hudson River is to the west.

PAST USE OF THE SITE: Dyes and pharmaceuticals were manufactured at the BASF Manufacturing Plant Site OU 01 since the 1890's. Soil and groundwater contamination originated

from numerous sources including four tanks that stored chlorobenzene.

OPERABLE UNITS: The site was divided into two operable units (OU). OU 01 Manufacturing Plant on-site and OU 02 Hudson River sediment and off-site areas. An operable unit represents a portion of a remedial program for a site that for technical or administrative reasons can be addressed separately to investigate, eliminate or mitigate a release, threat of release or exposure pathway resulting from the site contamination.

OU 01, Manufacturing Plant, consists of the on-site source area of contamination. OU 02, Hudson River sediment and off-site areas, consists of media off-site which may have been impacted by contaminant migration.

SITE GEOLOGY AND HYDROGEOLOGY: Groundwater flow direction is north towards Albany Molecular Research, Inc. and west towards the Hudson River. The depth to the shallow water bearing unit averages from five feet (along the eastern boundary) to 15 feet (near the Hudson River). A clay layer separates this shallow groundwater from a deeper water bearing unit. The clay layer is approximately 18 feet below the ground surface at the former lagoons (where it is 40 feet thick) and approximately five feet below the ground surface at the eastern boundary (where it is ten feet thick). The deep water bearing unit is a ten foot thick layer of sand just above a layer of glacial till, which is just above the shale bedrock.

Additional site details, including environmental and health assessment summaries, are available on NYSDEC's website at:

<http://www.dec.ny.gov/cfm/xtapps/derexternal/haz/details.cfm?pageid=3&progno=442027>

State Superfund Program: New York's State Superfund Program (SSF) identifies and characterizes suspected inactive hazardous waste disposal sites. Sites that pose a significant threat to public health and/or the environment go through a process of investigation, evaluation, cleanup and monitoring.

NYSDEC attempts to identify parties responsible for site contamination and require cleanup before committing State funds.

For more information about the SSF, visit: <http://www.dec.ny.gov/chemical/8439.html>

FOR MORE INFORMATION

Where to Find Information

Project documents are available at the following location(s) to help the public stay informed.

Rensselaer Public Library
Attn: Jane Chirgwin
676 East Street
Rensselaer, NY 12144
phone: 518-462-1193

Who to Contact

Comments and questions are always welcome and should be directed as follows:

Project Related Questions

John Strang
Department of Environmental Conservation
Division of Environmental Remediation
1130 North Westcott Rd
Schenectady, NY 12306
518-357-2390
john.strang@dec.ny.gov

Site-Related Health Questions

Steven Karpinski
New York State Department of Health
Bureau of Environmental Exposure Investigation
Empire State Plaza Corning Tower - Room 1787
Albany, NY 12237
518-402-7860
BEEI@health.ny.gov

We encourage you to share this fact sheet with neighbors and tenants, and/or post this fact sheet in a prominent area of your building for others to see.

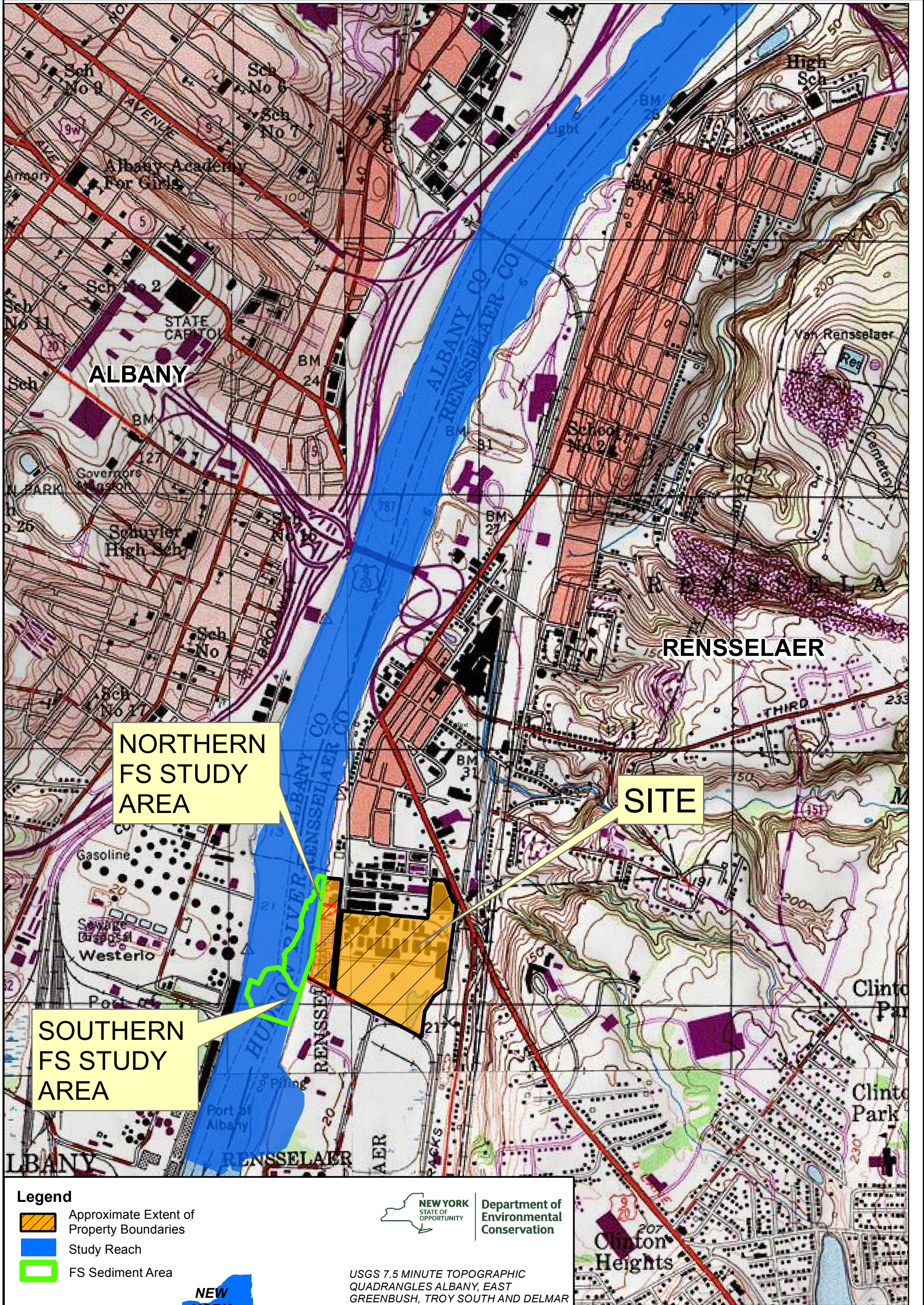
Receive Site Fact Sheets by Email




Have site information such as this fact sheet sent right to your email inbox. NYSDEC invites you to sign up with one or more contaminated sites county email listservs available at the following web page:
<http://www.dec.ny.gov/chemical/61092.html>. It's quick, it's free, and it will help keep you *better informed*.



As a listserv member, you will periodically receive site-related information/announcements for all contaminated sites in the county(ies) you select.

Note: Please disregard if you already have signed up and received this fact sheet electronically.

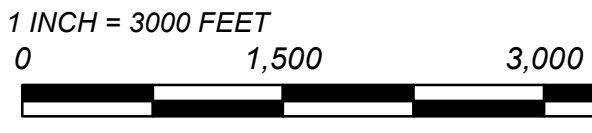


- Legend**
-  Approximate Extent of Property Boundaries
 -  Study Reach
 -  FS Sediment Area



Department of
Environmental
Conservation

USGS 7.5 MINUTE TOPOGRAPHIC
QUADRANGLES ALBANY, EAST
GREENBUSH, TROY SOUTH AND DELMAR



<div>Site Locus</div> <div>Hudson River OU-2 Proposed Remedial Action Plan BASF Corporation Rensselaer, New York</div>			Figure Number
SCALE	DATE	PROJECT NO.	1
See Inset	2/16	60135950	