



October 11, 2012

John R. Strang, P.E.
New York State Department of Environmental Conservation
1130 North Westcott Road
Schenectady, New York 12306-2014

Re: Limited Soil Removal at the Boat Ramp Parcel
BASF Manufacturing Plant, Rensselaer, NY
Site No. 442027

Dear Mr. Strang:

Roux Associates, Inc. (Roux Associates) has prepared this work plan for limited soil removal at the BASF Corporation Boat Ramp Parcel in Rensselaer, New York. This Work Plan was prepared to address the NYSDEC request for a limited soil removal at location BR-SB-7 in their June 29, 2012 letter. Based on the analytical results of the Limited Soil Investigation conducted on April 18, 2012, arsenic was detected in Soil Boring BR-SB-7 at concentrations above NYSDEC Part 375 Restricted Residential Criteria.

The Scope of Work will consist of pre-excavation soil characterization to define the limits of the excavation of soil from BR-SB-7 and the immediate area.

Roux Associates will collect and analyze nine pre-excavation soil characterization samples from five boring locations (Figure 1):

- eight soil samples will be collected from the 0 to 1 and 1 to 2 foot depth intervals at four locations approximately three feet radially outward from SB-7; and
- one soil sample will be collected at the same location as SB-7, but from the 2 to 3 foot depth interval.

Nine additional soil samples will be collected and held at the lab pending a review of the results from the above samples (Figure 1). The nine additional locations will be collected at a 6-foot radial distance outward from SB-7 (0 to 1 and 1 to 2 foot depth intervals) and from a depth of 3 to 4 feet immediately below SB-7.

The soil samples will be sent to TestAmerica Laboratories of Buffalo, New York and analyzed for arsenic via USEPA Method 6010. Once the extent of arsenic-impacted soil at concentrations above NYSDEC Part 375 Restricted Residential criteria has been confirmed, the excavation will proceed based on the limits defined by the pre-excavation

John R. Strang, P.E.

October 11, 2012

Page 2

characterization data. There will be no post-excavation samples collected. The excavation will then be backfilled with laboratory certified clean soil from a qualified vendor.

Should you have any questions or require additional information regarding this investigation, please contact Ms. Maria Drakos or Mr. Nathan Epler at (631) 232-2600.

Sincerely,

ROUX ASSOCIATES, INC.



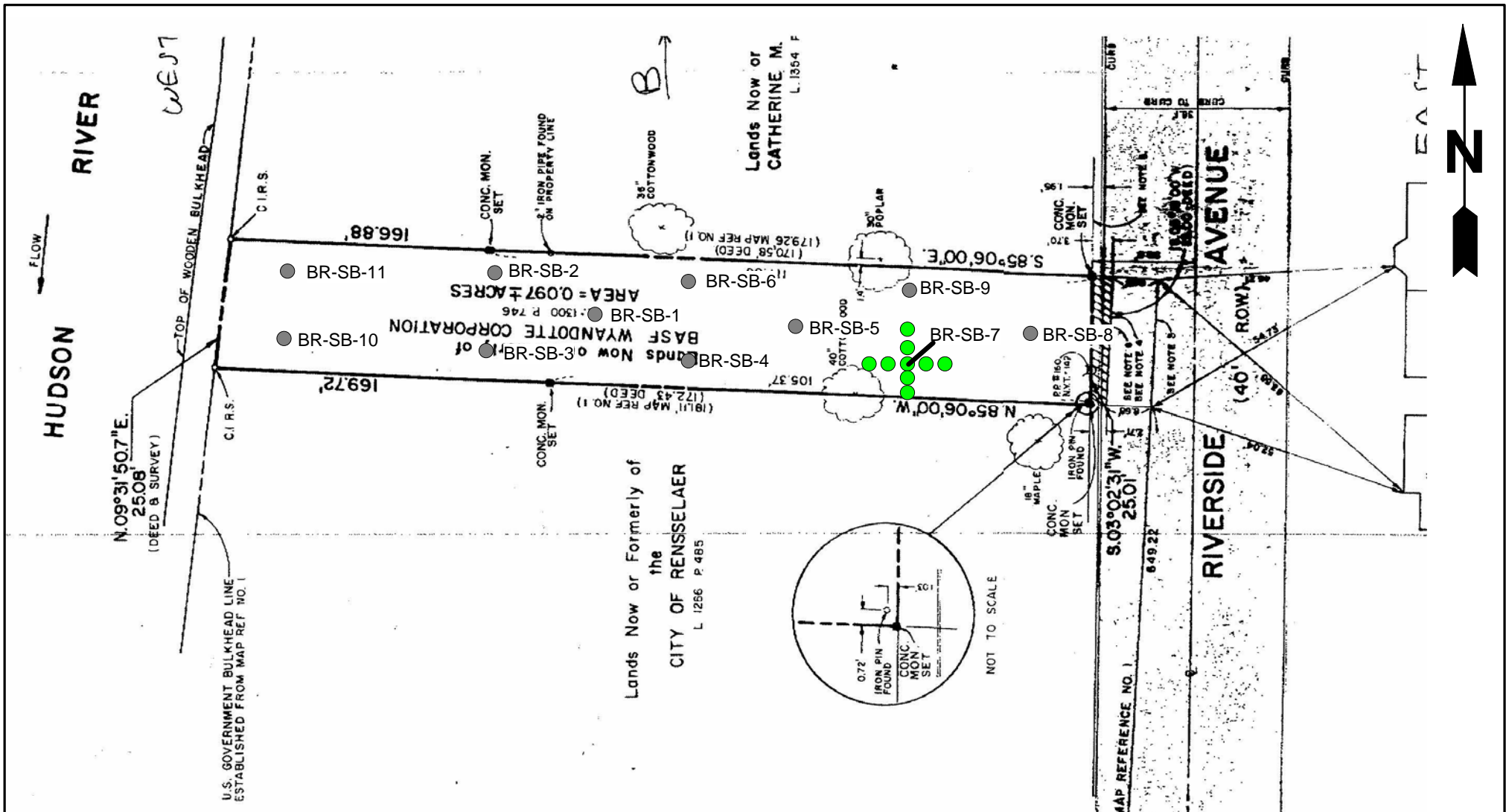
Maria Drakos
Project Scientist



Nathan Epler, Ph.D.
Principal Hydrogeologist

Enclosure

cc: Keith Goertz, New York State Department of Environmental Conservation
Chris O'Neill, New York State Department of Environmental Conservation
Maureen Schuck, New York State Department of Health
Bruce Donovan, New York State Department of Health
Doug Reid-Green, BASF Corporation
Wayne St. Claire, BASF Corporation
Hank Martin, Environmental Liability Management



EXPLANATION

- PREVIOUS SOIL SAMPLE
- PRE-EXCAVATION SOIL CHARACTERIZATION SAMPLE LOCATION

Title:

PRE-EXCAVATION SOIL CHARACTERIZATION SAMPLE LOCATIONS

BOAT RAMP PARCEL
RENSSELAER, NEW YORK

Prepared For:

BASF CORPORATION

ROUX
ROUX ASSOCIATES INC
Environmental Consulting
& Management

Compiled by: NE
Prepared by: NE
Project Mgr: NE
File No: BF1158401.WOR

Date: 7/17/2012
Scale: 1" = 27' (APPROX)
Office: NY
0251.0011Y043

FIGURE

1