

# NEW YORK STATE DEPARTMENT OF ENVIRONMENTAL CONSERVATION

Division of Water, Bureau of Water Permits

625 Broadway, Albany, New York 12233

[www.dec.ny.gov](http://www.dec.ny.gov)

Saint-Gobain Performance Plastics, McCaffrey Street Facility

## Project Site Remediation

### Wastewater Discharge SPDES Permit Equivalent

DRAINAGE BASIN: 11 / 02

DER Site No: 442046

Effective Date: 02/01/2024

Expiration Date: 1/31/2030

Modification Date(s): 9/01/2025; & 9/04/2025

#### Discharger Name and Address:

Saint Gobain Performance Plastics  
Christopher Angier  
14 McCaffrey Street  
Hoosick Falls, NY 12090  
[christopher.angier@saint-gobain.com](mailto:christopher.angier@saint-gobain.com)

Honeywell International, Inc.  
Sasa Jazic  
14 Columbia Circle  
Suite 103  
Albany, NY 12203  
[Sasa.Jazic@Honeywell.com](mailto:Sasa.Jazic@Honeywell.com)

is authorized to discharge from the facility described below:

Saint-Gobain Performance Plastics, McCaffrey Street Facility  
14 McCaffrey Street  
Village of Hoosick Falls, Rensselaer County, NY

From the following outfall:

Outfall #	Outfall Description	Location	Receiving Water	WIN *	Class
001	Treated Remediation Wastewater	42° 53' 33" N -73° 21' 27.1" W	Hoosic River/Groundwater	H-264	C(T)/GA

\* Water Index Number

## EFFLUENT LIMITATIONS & MONITORING REQUIREMENTS

OUTFALL	DISCHARGE TYPE	LATITUDE/ LONGITUDE	RECEIVING WATER and CLASS	EFFECTIVE	EXPIRING
001	Treated Remediation Wastewater	42° 53' 33" N 73° 21' 27.1" W	Hoosic River/Groundwater, Class C(T)/GA	2/1/2024	1/31/2030

The discharges from the treatment facility shall be limited and monitored by the operator as specified below. The standards listed reflect the more stringent between surface water and groundwater water quality standards:

Outfall and Parameters	CAS No.	Monthly Avg. Limits	Daily Max Limits	Units	Minimum Monitoring Requirements		FN
Outfall 001					Measurement Frequency	Sample Type	
Flow rate		Monitor	72,000	GPD	1/month	Grab	
pH (range)		6.0 – 9.0 (Range)		SU	1/month	Grab	
Total Suspended Solids		Monitor	50	mg/l	1/month	Grab	
Settleable Solids		Monitor	0.1	mL/L	1/month	Grab	
Total Dissolved Solids		Monitor	Monitor	mg/L	1/month	Grab	
Oil & Grease		Monitor	15	mg/L	1/month	Grab	
Dissolved Oxygen		Monitor	6.0 (Minimum)	mg/L	1/month	Grab	
Perfluorooctanoic Acid (PFOA)		Monitor	6.7	ng/L	1/month	Grab	1
Perfluorooctanesulfonic Acid (PFOS)		Monitor	2.7	ng/L	1/month	Grab	1

### Footnotes:

1. PFOA/PFOS:
  - a. Sampling for PFOA shall use EPA Method 1633 or other method specified by DER.
  - b. Sampling for PFOS shall use EPA Method 1633 or other method specified by DER.

### Additional Conditions:

1. Discharge is not authorized until such time as an engineering submission showing the method of treatment is approved by the Department. The discharge rate may not exceed the effective or design treatment system capacity. All monitoring data, engineering submissions and modification requests must be submitted to:

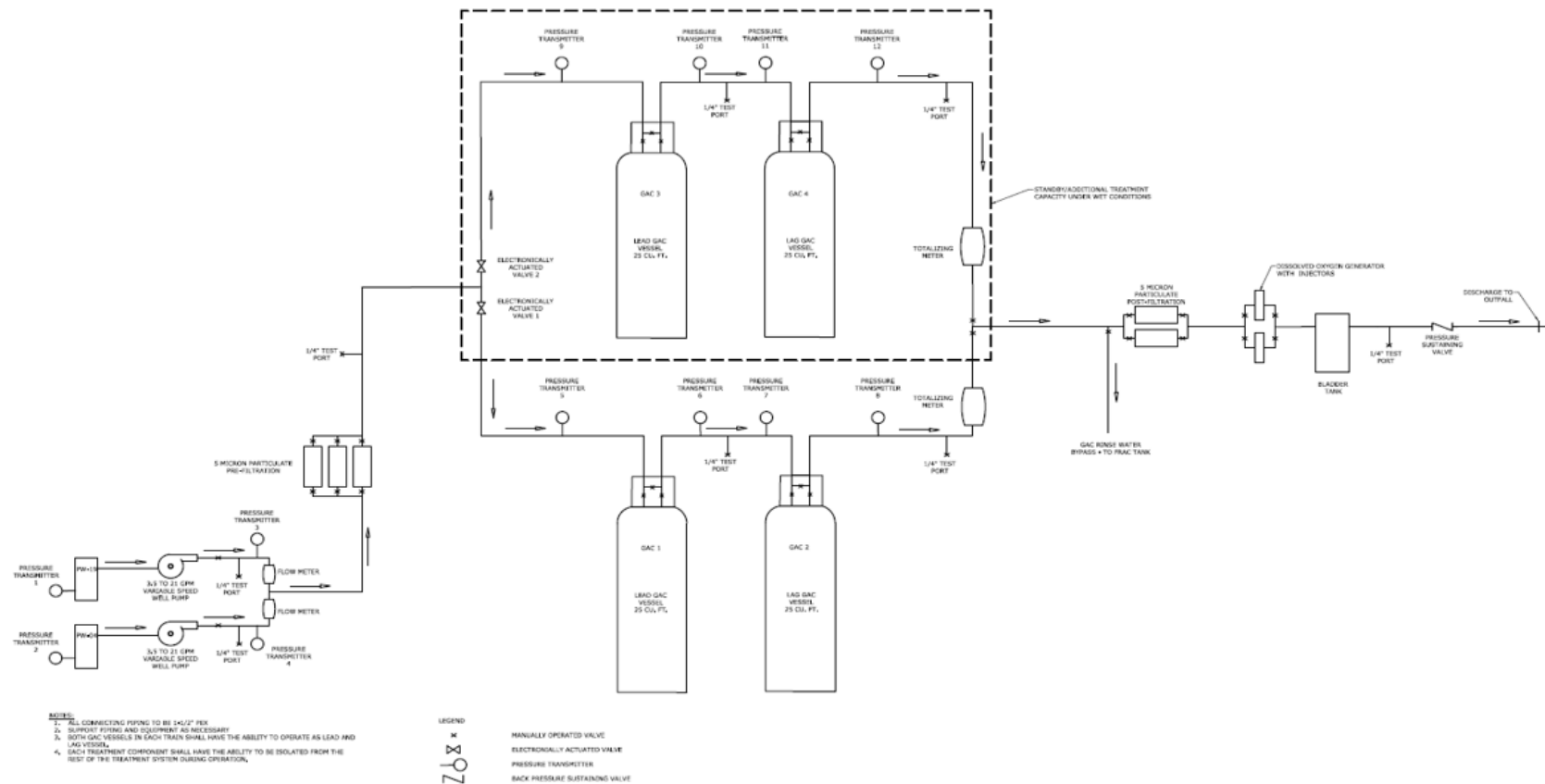
Ian A Beilby  
 Division of Environmental Remediation  
 NYSDEC, 625 Broadway, Albany, New York 12233- 7015,  
 Tel: 518-402- 9639  
 Email: ian.beilby@dec.ny.gov

With a copy sent to:

Bonnie Starr, PE  
Regional Water Engineer/Manager, Region 04  
1130 North Westcott Road, Schenectady, New York, 12306-2014  
Phone: (518) 357- 2377  
Email: bonnie.starr@dec.ny.gov

2. Samples and measurements, to comply with the monitoring requirements specified above, must be taken from the effluent side of the final treatment unit prior to discharge to the receiving water body unless otherwise noted above.
3. Monitoring and analysis shall be conducted using sufficiently sensitive test procedures approved under 40 CFR Part 136 unless other test procedures have been specified in this permit.
4. Only site generated wastewater is authorized for treatment and discharge.
5. Authorization to discharge is valid only for the period noted above but may be renewed if appropriate. A request for renewal must be received 6 months prior to the expiration date to allow for a review of monitoring data and reassessment of monitoring requirements.
6. Both concentration (mg/l or  $\mu\text{g/l}$  or ng/L) and mass loadings (lbs/day) must be reported to the Department for all parameters except flow and pH.
7. Any use of corrosion/scale inhibitors, biocidal-type compounds, or other water treatment chemicals used in the treatment process must be approved by the department prior to use.
8. This discharge and administration of this discharge must comply with the substantive requirements of 6NYCRR Part 750.

## MONITORING LOCATION - Effluent location at outfall 001 (after dissolved oxygen injection point.)



**C.T. MALE ASSOCIATES**  
 Engineering, Surveying, Architecture, Landscape Architecture, & Geology, S.P.C.

80 CENTURY HILL DRIVE, LATHAM, NY 12110  
 518.786.7400 • FAX 518.786.7299

PROJ. NO.: 14.4756 DRAFTED: JRG SCALE: NONE DATE: 11/5/2019



**FIGURE 3**  
**GWC&T SYSTEM SCHEMATIC**

**GWC&T IRM CCR**  
**McCaffrey Street Site**

VILLAGE OF HOOSICK FALLS RENSSELAER COUNTY, NEW YORK