



FACT SHEET

Manufactured Gas Plant Program

NYSEG-Saranac Street MGP Site
Site # 5-10-007
City of Plattsburgh, NY

February 2010

Saranac River Phase of Cleanup to Begin at NYSEG MGP Site Availability Sessions Announced

Actions are about to begin that will address contamination in the Saranac River related to the Saranac Street former manufactured gas plant (MGP) site, located on Saranac Street in the City of Plattsburgh, Clinton County. See the attached map for the site location and the cleanup area in the River, which extends from a location approximately 300 feet upstream of the Wood Deck Bridge to the Kennedy Bridge.

The cleanup action for the site includes the removal and off-site disposal of coal tar contaminated sediment from the Saranac River bed, and the restoration of the river bed and river banks disturbed by the cleanup operations. Cleanup activities will be performed by a contractor hired by New York State Electric and Gas Corporation (NYSEG), the responsible party, with oversight provided by the New York State Department of Environmental Conservation (NYSDEC).

Availability Sessions

Thursday, February 17, 2010, 6:00 PM
Stafford Middle School Auditorium
15 Broad Street
Plattsburgh, New York

Tuesday, March 9, 2010, 7:00 PM
TROUT UNLIMITED MONTHLY MEETING
Gander Mountain Room, Gander Mt. Store
Champlain Centre Mall
60 Smithfield Boulevard
Plattsburgh, New York

NYSDEC invites you to these discussions about cleanup activities that are about to begin at the site. Drop in any time during the sessions to ask questions and discuss the upcoming site activities.

Highlights of the Upcoming Cleanup Actions

The goal of this phase of the cleanup for this site is to remove and dispose of river sediments contaminated with coal tar. This tar was discharged to the site and the Saranac River during the production of manufactured gas that took place between 1896 and 1944 and by subsequent migration through the subsurface. The scope of work for the upcoming river cleanup program includes:

- Mobilization and site preparation, which will begin in late March 2010. The preparation work will include construction of a temporary contaminated water treatment plant, erection of a temporary structure to prepare the removed sediments for off-site shipment

and construction of on-site hauling roads;

- Construction of a river diversion system. This and the following tasks will begin in May. This task entails the installation of upstream and downstream temporary dams and construction of a fish passage channel which will also function as a diversion channel to divert the river around the work area;
- Removal of an estimated 39,200 cubic yards of contaminated sediment and river bank material using standard excavating equipment. Transfer of excavated sediments by conveyor to an enclosed treatment building for processing before they are shipped off-site; This task will start in July of this year and will continue seasonally through 2012;
- Restoration of the river bed to its pre-remediation condition after the contaminated sediment has been removed; and
- Restoration of the river bank to its original condition by seeding and planting plants native to the area of remediation.

This project is expected to require three construction seasons to complete. To ensure that fish can spawn upstream of the project area, each construction season is limited to the period between May 1st and the end of September. All site operations will be performed in accordance with a site-specific Health and Safety Plan and Community Air Monitoring Plan. Also, to minimize

odor generation during excavation of the contaminated sediments, the contractor will implement an Enhanced Odor Control Plan and conduct sediment treatment operations inside a temporary structure. Air quality will be monitored as a minimum at six locations whenever the contractor is working: at the point of work, at one upwind location and at two downwind locations along the perimeter of the site. Two air monitoring stations will be added at the Stafford Middle School. One station will be located at the school's main air intake, the second station will be set at the soccer field.

About the Manufactured Gas Plant Program:

NYSDEC has one of the most aggressive Manufactured Gas Plant (MGP) Programs site investigation and remediation programs in the country. Since the problems associated with the former MGP sites were identified, NYSDEC has been working with all the utilities on a state-wide basis to identify and address the issue of MGP sites for which they may have responsibility. This effort has resulted in approximately 235 sites identified for action by the eight utilities operating in New York State.

Currently we have multi-site orders or agreements with six utilities, including NYSEG, and several other individual site volunteers, to address 222 MGP sites in NYS. Multi-site agreements are under negotiation with a seventh utility and several other responsible parties which have newly-identified sites.

NYSDEC continues to seek to identify any other possible MGP sites throughout the State. For more information about the NYSDEC's MGP program, visit:
www.dec.ny.gov/chemical/8430.html

Air monitoring stations will measure the concentration of particulates (dust particles) in the air, and the concentration of vapors. The stations will be equipped with alarms activated at contamination levels below the specific action levels for this site. Protection of students and staff of the school was additionally enhanced by the installation of fifty four activated carbon air filters capable of filtering out volatile substances that cause odors. These filters were installed on the school's air handling system in May 2007 during the on-site excavation. All of these activities and others are summarized in the Community and Environmental Response Plan.

Cleanup of contaminated river sediments will be the last phase of the remedial action that was established in the 2004 Record of Decision for Operable Unit 1 of the Saranac Street former MGP site. In addition, the NYSDEC and NYSEG are developing cleanup alternatives for

sediment contamination downstream of the Kennedy Bridge. Upon completion of the remedy, the site will be subject to a site management plan and controls, including soil management, restriction on the use of groundwater as a source of potable or process water without prior treatment and restriction of the use of the site to commercial, industrial and/or certain recreational uses.

NYSEG will have to provide a periodic certification which will certify that the site management plan is being implemented and all the controls remain in place and continue to be effective.

Background

Gas was manufactured at the Saranac Street site from 1896 until 1944 by the Plattsburgh Light, Heat and Power Company, and then until 1960 by NYSEG. Manufactured gas was produced by heating coal and other petroleum products in the presence of steam. The gas was used by local businesses and residents for lighting, cooking, heating and other purposes.

Byproducts of the manufactured gas process often remained at sites after manufactured gas plants were closed. These byproducts can include coal tar, purifier wastes and coal ash.

NYSEG began investigating this site in 1976. Work in the 1980s included construction of a soil/bentonite slurry containment barrier around the former coal tar lagoon, construction of a slurry wall next to the Saranac River and removal of river sediments affected by coal tar.

NYSEG installed a groundwater treatment facility in 1987, and since then NYSEG has been actively managing the site. NYSDEC and NYSEG entered into a multi-site Consent Order in 1994, which included cleanup of the Saranac Street MGP site. NYSEG completed an interim remedial measure project in 2002 that involved the excavation and off-site disposal of coal tar soil from the east side of Saranac Street.

In May 2009, NYSEG completed the removal of MGP contaminated waste for the upland area of the former manufactured gas plant (MGP) site on Saranac Street site in the City of Plattsburgh. As a result of this cleanup operation, 151,970 tons of tar contaminated soils were excavated and trucked to a permitted treatment and disposal facility. Also, 7,342,031 gallons of contaminated liquids were collected from the excavated areas, treated and disposed.

The additional contamination in the Saranac River sediments, extending beyond the boundaries of this project area are being addressed by operable unit 2 of the site. A remedial investigation has been completed and alternatives to address the sediment are being evaluated.

FOR MORE INFORMATION

Where to Find Information

Project documents are available at the following location(s) to help the public to stay informed. These documents include the decision document describing the selected remedy for the site, called the "Record of Decision".

Plattsburgh Public Library 19 Oak Street Plattsburgh, NY 12901-2810 (518) 563-0921	Russell Huyck, PE NYSDEC Region 5 1115 State Route 86 Ray Brook NY 12977 (518) 897-1242
NYSDEC Lech Dolata 625 Broadway, 11 th Floor Albany, NY 12233-7014 (518) 402-9662	

Who to Contact

Comments and questions are always welcome and should be directed as follows:

Project Related Questions

NYSDEC Project Manager
Mr. Lech Dolata
Project Manager
NYSDEC
625 Broadway, 11th Floor
Albany, NY 12233-7014
(518) 402-9662
Email address: lxdolata@gw.dec.state.ny.us

Site-Related Health Questions

NYSDOH Project Manager
Ms. Wendy Kuehner, PE
Senior Sanitary Engineer
NYSDOH
547 River Street, Room 300
Troy, NY 12180-2216
1-(800)-458-1158 ext.27870 or
(518) 402-7870
Email address: wsk01@health.state.ny.us

To direct questions to NYSEG, please contact:

Mr. Bert W. Finch
Project Manager
Corporate Drive, Kirkwood Industrial Park
P.O. Box 5224
Binghamton, NY 13902
(607) 762-8683

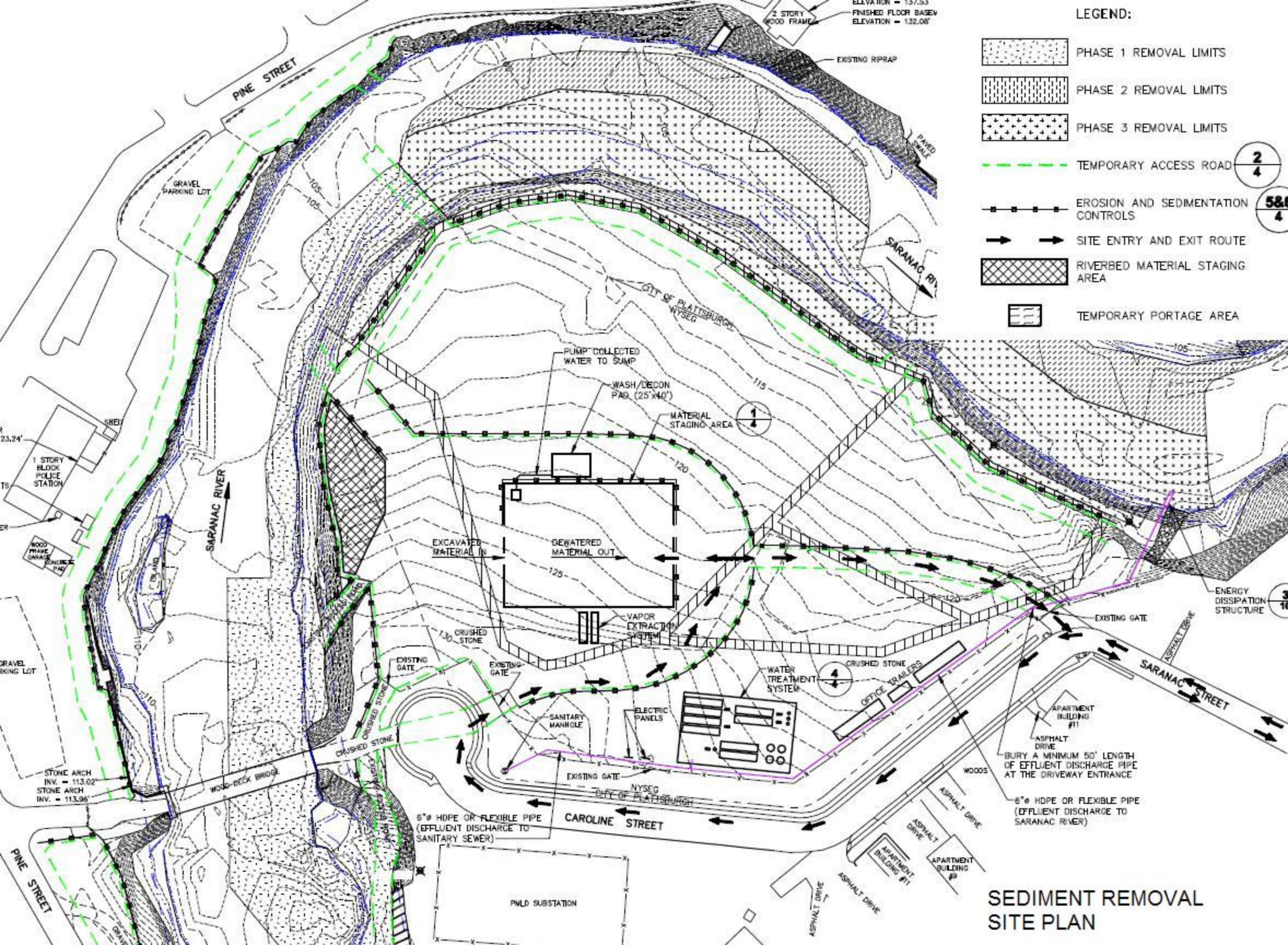
PROJECT HOTLINE: (518) 561-2138

If you have any concerns after construction begins, the NYSDEC and NYSEG will again operate a project hotline. Please call this number with any day-to-day concerns relating to the cleanup.

If you know someone who would like to be added to the site contact list, have them contact the NYSDEC project manager above. We encourage you to share this fact sheet with neighbors and tenants, and/or post this fact sheet in a prominent area of your building for others to see.



Site Location Map



CITY: SYRACUSE, NY DIV: GROUP ENV/141 DBX: SARTORI LD: PIC: K: WHITE PM: M: BIONDOULLO TM: M: DEGRACIA LYRON: "OFF-REF" G:\ENV\CAD\SYRACUSE\ACT\B00130920000000560\DWG\PP-PRESENT\13092007.dwg LAYOUT: 7\$SAVED: 2/4/2010 9:07 AM ACADVER: 17.05 LMS TECH/PAGESETUP: M:\D2B-PDF-LEDGER-COLOR PLOT STYLE TABLE: PLT\FULL-CTB PLOTTED: 2/4/2010 9:08 AM BY: GETTIS, BRIAN



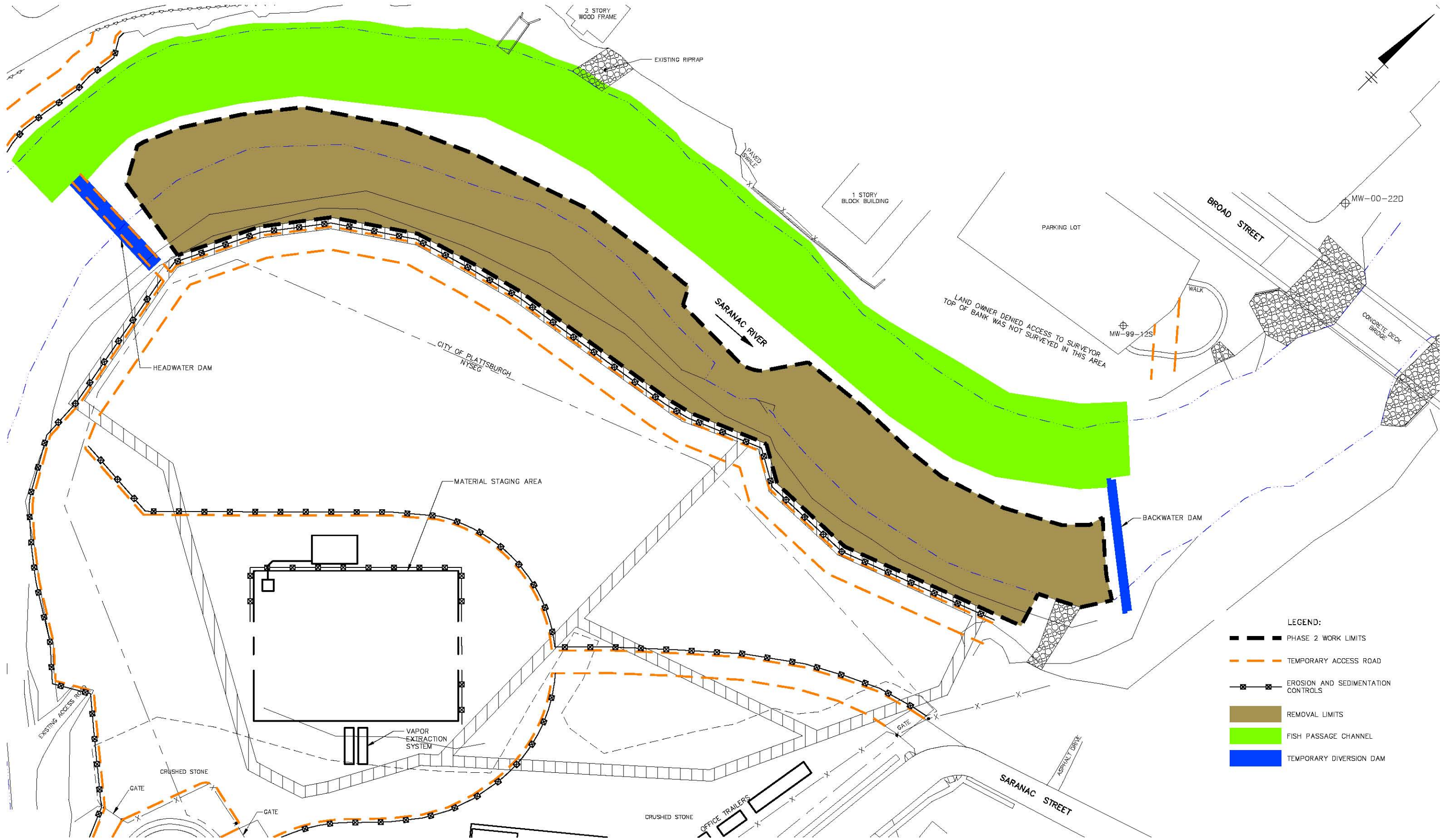
PHASE 1 HYDRAULIC CONTROLS AND EXCAVATION PLAN



PHASE 2 HYDRAULIC CONTROLS
AND EXCAVATION PLAN

CITY: SYRACUSE, NY DIV: GROUP ENV/141 DBK: SARTORI LD: PIC: K WHITE PM: M BIONDOULLO TM: M DEGRACIA LYRON: "OFF=REF"
G:\ENV\CAD\SYRACUSE\ACT\B0013092000000560\DWG\PP-PRESENT\13092508.dwg LAYOUT: 8/SAVED: 2/4/2010 9:08 AM ACADVER: 17.05 LMS TECH/PAGESETUP: M:\D2B-PDF-LEADER-COLOR\LOTSTYLE.TABLE PLT: FULL-CTB PLOTTED: 2/4/2010 9:09 AM BY: GETTIS, BRIAN

CITY: SYRACUSE, NY DIV: GROUP ENV/141 DBK: SARTORI LD: PIC: K. WHITE PM: M. BIONDOULLO TM: M. DEGRACIA LYRON: "OFF-REF"
G:\ENVCAD\SYRACUSE\ACT16001309200000060DWG\PP-PRESENT113092000.dwg LAYOUT: 9/5/2010 9:06 AM CADVER: 17:05 LMS TECH/PAGES/SETUP: M:\D2B-PDF-LEDGER-COLOR/PLOT/STYLE/TABLE: PLT\FULL-CTB PLOTTED: 2/4/2010 9:06 AM BY: GETTIS, BRIAN



PHASE 3 HYDRAULIC CONTROLS AND EXCAVATION PLAN