

**FACT SHEET****Manufactured Gas Plant
Program****Receive Site Fact Sheets by *Email*.** See "For More Information" to Learn How.

Site Name: NYSEG - Saranac St. Former MGP Site
DEC Site #: 510007 Operable Unit 01 *
Address: Saranac Street
Plattsburgh, NY 12901

Have questions?
See
"Who to Contact"
Below

Cleanup Action to Continue in the Saranac River

Cleanup work is about to resume on a multi-year project to remove contaminated sediments and soils from the Saranac River in the City of Plattsburgh, Clinton County. The contamination resulted from the historic operations of a former manufactured gas plant (MGP) site, located on Saranac Street. The work area extends from a location approximately 300 upstream of the Wood Deck Bridge to the Broad Street Bridge. See the attached figures for the work location.

Detailed documents related to the cleanup of this site can be found at the location(s) identified below under "Where to Find Information."

Highlights of the Upcoming Cleanup Activities

The cleanup action for Operable Unit 01 (OU1) for the site includes the removal and off-site disposal of sediment and underlying soils from the Saranac River bed which are contaminated with coal tar. The river bed and banks will be restored when the removal is complete. Cleanup activities will be conducted by Severson Environmental Services, a contractor hired by New York State Electric & Gas Corporation (NYSEG), the responsible party, with oversight provided by the NYSDEC.

This tar was discharged to the Saranac River during the production of manufactured gas that took place between 1896 and 1960, and also by subsequent migration of tar through the subsurface.

This is a multi-year project which is expected to continue until at least 2017 (Figure 2). This year's work picks up where previous work left off (Figure 3). The scope of work this year includes:

- Mobilization and site preparation began in early June 2014. The preparation work includes maintenance of the temporary on-site structure used to prepare the removed sediments for off-site shipment, and also re-activating the on-site waste water treatment plant;
- Construction of a river diversion system, which entails the installation of upstream and downstream temporary dams, and a row of steel sheet piles driven into the middle of the river bed and supported with large concrete blocks. This work is expected to start in mid-June 2014;

- Removal of an estimated 10,000 cubic yards of contaminated sediment and soil using standard excavating equipment. Excavated sediment and soil will be transported to the on-site temporary structure by dump trucks where it will be processed then shipped off-site for thermal treatment or landfill disposal. This work is expected to start in mid-July;
- Restoration of the river bed to its pre-remediation condition after the contaminated sediments and soil have been removed;
- At the completion of the project, expected to be late summer 2017, restoration of the river bank to its original condition by seeding and planting species native to the area.

All site operations will be performed in accordance with a site-specific Health and Safety Plan and Community Air Monitoring Plan. Also, to minimize odor generation during excavation, the contractor will implement an Enhanced Odor Control Plan and will conduct sediment treatment operations inside a temporary structure. Air quality will be monitored at a minimum of four (4) locations whenever the contractor is working. One station will be located upwind of the work area and will serve as the "background" or control station. Two stations will be located at the downwind perimeter of the work area and will be adjusted as needed to maintain their location downwind of the work area. One station will be permanently located at the air intake of the Stafford Middle School building.

Air monitoring stations will measure the concentration of particulates (dust particles) in the air, and the concentration of vapors. The stations will be equipped with alarms activated at contamination levels below the specific action levels for this site. Protection of students and staff of the Stafford Middle School was additionally enhanced by the installation of fifty-four (54) activated carbon air filters capable of filtering out volatile substances that cause odors. These filters were installed on the school's air handling system in May 2007 during the on-site excavation and have been replaced each year at the beginning of the project work.

Next Steps

At the end of the construction season this year, NYSEG will prepare a Construction Completion Report to describe the cleanup activities completed. At the completion of the project (both OU1 and OU2) a Final Engineering Report will be prepared which will certify that cleanup requirements have been achieved or will be achieved.

The NYSDEC will keep the public informed throughout the cleanup of the site.

Background

Location: The site is located in the City of Plattsburgh, Clinton County, at Saranac Street. The site occupies approximately 11 acres of land in urban area along the east and south bank of the Saranac River, directly across the river from downtown Plattsburgh. The corner of Saranac and Caroline Streets defines the northeast corner of the site, with Caroline Street forming the eastern site boundary. The remaining three sides are bounded by the Saranac River.

Site features: The main site features include a grassy mound formed above the former tar disposal lagoon, an underground barrier wall encircling the lagoon installed in early 1980s, a barrier wall built along the river bank to contain tars that passed the lagoon barrier and the section of the Saranac River between the wooden footbridge and the Saranac River outlet into Lake Champlain forms the western boundary of the site. There are some trees and underbrush along the river bank, but the rest of the site is open and grass covered. Several large electrical transmission towers are located along the northern site boundary, and a buried sewer line crosses the site from southwest to northeast.

Current Zoning/Use(s): The site is zoned for light industrial use and is currently owned by the

NYSEG. The site is unused, with the exception of an electrical substation located near the Saranac River. The nearest residences are on the east side of Caroline Street, approximately 50 feet from the site boundary.

Past Use of the Site: From approximately 1896 to 1960, the site housed a MGP facility. The MGP used coal and petroleum products to produce flammable gas, which was used in much the same way that natural gas is used today. The gas manufacturing process produced large quantities of two different waste materials (coal tar and gas purifier waste), both of which were disposed on site.

Operable Units: The site is divided into two operable units. An operable unit represents a portion of a remedial program for a site that for technical or administrative reasons can be addressed separately to investigate, eliminate or mitigate a release, threat of release or exposure pathway resulting from the site contamination. Operable Unit 1 (OU1) is the on-site source area covering the former lagoon area and the section of the Saranac River between the wood deck bridge and the Broad Street Bridge. Operable Unit 2 includes the section of the Saranac River downstream of the Broad Street Bridge and a portion of Cumberland Bay within Lake Champlain.

Site Geology and Hydrogeology: The site is underlain by several layers of overburden consisting of unconsolidated soils overlying a till layer followed by limestone bedrock. A thin layer of man-placed fill covers the entire site. The depth of this fill ranges from a few feet to 21 feet across the site. The fill consists of a complex mix of reworked site soils, building demolition debris and soils brought for the outside sources. The groundwater that can be found at a depth between 8 to 15 feet flows toward the Saranac River within the man-made fill layer and the layer of coarse grained alluvium.

Prior to remediation: Byproducts of the manufactured gas process that included coal tar, purifier wastes and coal ash were found in the river sediments and in the Upland Area. In the Upland Area contamination was found reaching the depth of 20 ft.

Post-remediation: Purifier waste and tar-contaminated sediments and soils have been removed and shipped off site for treatment and disposal. The excavated areas within the river were backfilled with clean cobble. The excavated areas along the riverbanks were backfilled with clean soil and seeded to control erosion. The final, 2 foot thick clean soil cap, will be installed upon completion of the sediment removal work in the Saranac River.

The multi-year program to remove contaminated sediments from the Saranac River continues this 2014 construction season. Approximately 75,000 tons of impacted sediment has removed over the past 4 years, and it is anticipated that the removal program will continue through 2017. The attached figure shows completed remediation areas, remaining areas for remediation, and areas identified for investigation and potential remediation.

Additional site details, including environmental and health assessment summaries, are available on NYSDEC's website at:

<http://www.dec.ny.gov/cfm/externalapps/derexternal/haz/details.cfm?pageid=3&progno=510007>

About the Manufactured Gas Plant Program:

NYSDEC has one of the most aggressive Manufactured Gas Plant (MGP) site investigation and remediation programs in the country. Since the problems associated with the former MGP sites were identified, NYSDEC has been working with all the utilities on a state-wide basis to identify and address the issue of MGP sites for which they may have responsibility. This effort has resulted in approximately 235 sites identified for action by the eight utilities operating in New York State. Currently we have multi-site orders or agreements with six utilities, including NYSEG, and several other individual site volunteers, to address 222 MGP sites in NYS. Multi-site agreements are under negotiation with a seventh utility and several other responsible parties which have newly identified sites. NYSDEC continues to seek to identify any other possible MGP sites throughout the State.

For more information about the NYSDEC's MGP program, visit:

www.dec.ny.gov/chemical/8430.html

FOR MORE INFORMATION

Where to Find Information

Project documents are available at the following location(s) to help the public stay informed.

Plattsburgh Public Library
Attn: Librarian
19 Oak Street
Plattsburgh, NY 12901-2810
(518) 563-0921

Who to Contact

Comments and questions are always welcome and should be directed as follows:

Project Related Questions

Liz Lukowski
Department of Environmental Conservation
Division of Environmental Remediation
625 Broadway
Albany, NY 12233-7014
518-402-9662
eblukows@gw.dec.state.ny.us

Site-Related Health Questions

Wendy S. Kuehner, P.E.
New York State Department of Health
Bureau of Environmental Exposure Investigation
Empire State Plaza, Corning Tower, Room 1787
Albany, NY 12237
(518) 402-7860
wendy.kuehner@health.ny.gov

PROJECT HOTLINE: (518) 561-2171

If you have any concerns after construction begins, the NYSDEC and NYSEG will again operate a project hotline. Please call this number with any day-to-day concerns relating to the cleanup.

We encourage you to share this fact sheet with neighbors and tenants, and/or post this fact sheet in a prominent area of your building for others to see.

Receive Site Fact Sheets by Email

Have site information such as this fact sheet sent right to your email inbox. NYSDEC invites you to sign up with one or more contaminated sites county email listservs available at the following web page:
<http://www.dec.ny.gov/chemical/61092.html>. It's quick, it's free, and it will help keep you *better informed*.



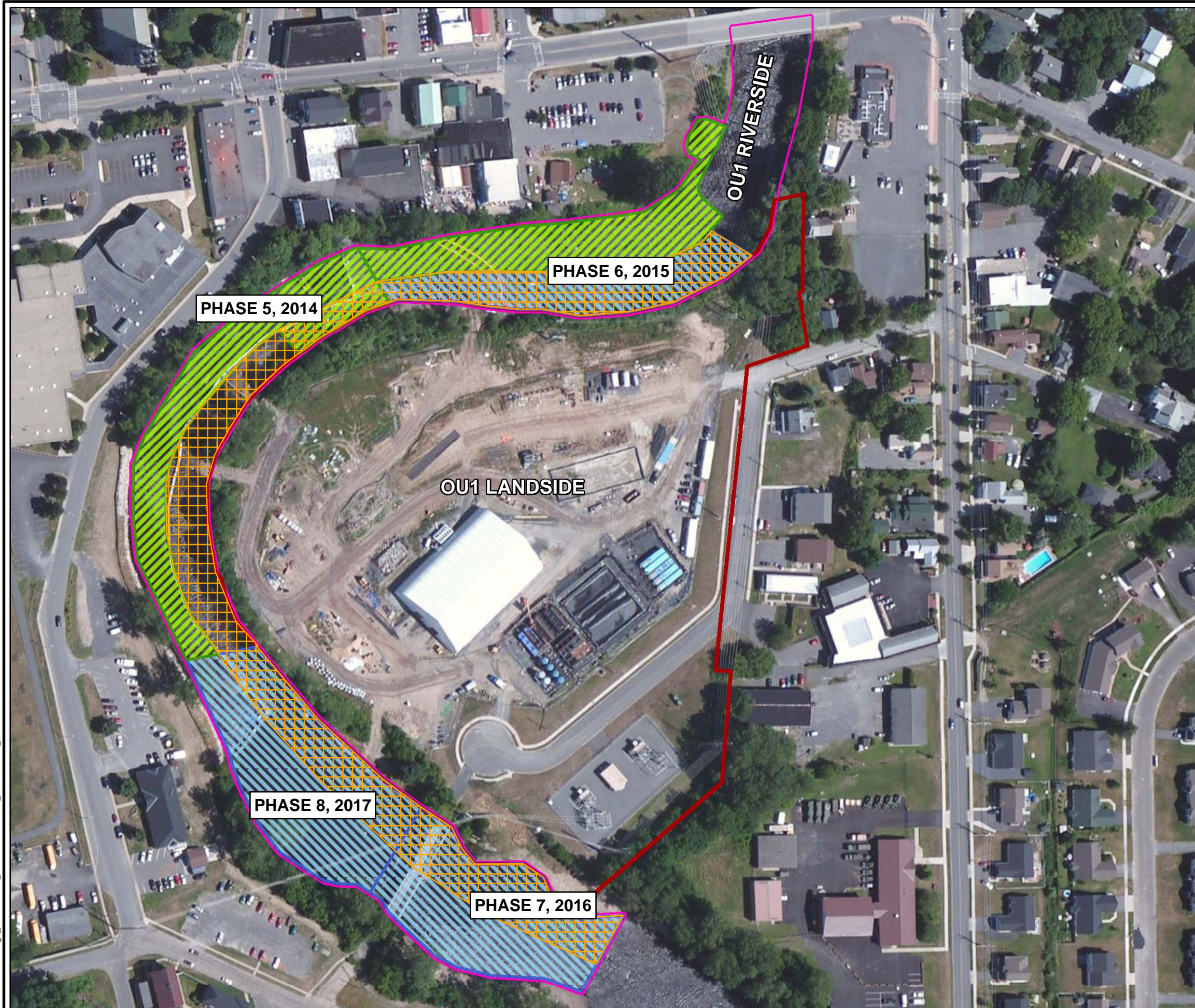
As a listserv member, you will periodically receive site-related information/announcements for all contaminated sites in the county(ies) you select.

Note: Please disregard if you already have signed up and received this fact sheet electronically.








Site Location Map

City: syr Div/Group: sed Created By: j.rapp Last Saved By: kives
nyseg (13100.5001.0)
Q:\NYSEG\Plattsburgh_NY\NYSDEC_Factsheet\mxd\OU1_RemovalArea_v2.mxd 6/9/2014 1:18:44 PM



LEGEND:

-  REMEDIATION COMPLETED (PHASES 1 - 4, 2010 - 2013)
-  REMEDIATION AREA REMAINING (2014/2015)
-  INVESTIGATION/POTENTIAL REMEDIATION (2015/2016/2017)
-  OU1 - LANDSIDE
-  OU1 - RIVERSIDE



NOTE:

1. AUGUST 28, 2010 IMAGERY OBTAINED FROM THE ESRI SOFTWARE IMAGE SERVICE LICENSE.

NEW YORK STATE ELECTRIC AND GAS CORPORATION
PLATTSBURGH, NEW YORK
NYSDEC FACTSHEET

OU1 REMOVAL AREAS



FIGURE
2



LEGEND:

- TEMPORARY BRIDGE
- HYDRAULIC CONTROLS
- PHASE 5 REMEDIATION AREA - CELLS 5A, 5B, AND 5C (2014)
- RIVER AREA



NOTE:

- AUGUST 28, 2010 IMAGERY OBTAINED FROM THE ESRI SOFTWARE IMAGE SERVICE LICENSE.

NEW YORK STATE ELECTRIC AND GAS CORPORATION
PLATTSBURGH, NEW YORK
NYSDEC FACTSHEET

PHASE 5 REMOVAL AREA



FIGURE
3