



FACT SHEET

State Superfund Program

Receive Site Fact Sheets by **Email**. See "For More Information" to Learn How.

Site Name: NYSEG - Plattsburg Saranac St. MGP
DEC Site #: 510007 Operable Unit 02 *
Address: Saranac Street
Plattsburgh, NY 12901

Have questions?
See
"Who to Contact"
Below

Remedy Proposed for State Superfund Site; Public Comment Period and Public Meeting Announced

Public Meeting, Wednesday, 3/14/2018 at 7:00 PM

Plattsburgh City Hall, 41 City Hall Place, Plattsburgh, NY 12901

NYSDEC invites you to a public meeting to discuss the remedy proposed for the site. You are encouraged to provide comments at the meeting, and during the 30-day comment period described in this fact sheet.

The public is invited to comment on a remedy proposed by the New York State Department of Environmental Conservation (NYSDEC) related to the NYSEG - Plattsburg Saranac St. MGP site ("site") located at Saranac Street, Plattsburgh, Clinton County. Please see the map for the site location.

Documents related to the cleanup of this site can be found at the location(s) identified below under "Where to Find Information." The estimated cost to implement the remedy is:

<u>OU</u>	<u>RemCost</u>
02	\$16,300,000.00

Additional site details, including environmental and health assessment summaries, are available on NYSDEC's website at:

<http://www.dec.ny.gov/cfm/extapps/derexternal/haz/details.cfm?pageid=3&progno=510007>

How to Comment

NYSDEC is accepting written comments about the proposed plan for 30 days, from **February 28, 2018** through **March 30, 2018**. The proposed plan is available for review at the location(s) identified below under "Where to Find Information." Please submit comments to the NYSDEC project manager listed under Project Related Questions in the "Who to Contact" area below.

Proposed Remedial Action Plan

The remedy proposed for Operable Unit #2 (OU-2), the section of the Saranac River downstream of the former Kennedy Bridge, the site includes:

- Excavation and on-site processing of all visually impacted sediment from the Saranac River. Approximately 17,700 cubic yards of sediment will be excavated to bedrock.
- In areas where the bedrock is exposed during excavation and visual coal tar is observed, the bedrock surface will be cleaned prior to backfilling.
- On-site processing to separate finer materials for off-site disposal and coarser material for reuse after cleaning. Approximately 5,300 cubic yards of excavated cobbles and boulders will be suitable for reuse.
- Backfill of the sediment bed with clean material consisting of imported backfill and post-processed coarse material approved for reuse.
- Restoration in-kind of the Saranac River bed and any disturbed banks. River bed and bank bathymetry and topography will be restored to pre-existing grades with in kind stream bed and bank materials that may include reused materials. If present, submerged aquatic and riparian vegetation in the disturbed area will be restored.

Summary of the Investigation

The principal type of waste material found in OU-2 is coal tar. Coal tar is a black, oily liquid which condensed from the hot gas produced by the manufacturing process. Large quantities of tar escaped from the site into the Saranac River and migrated downstream into OU-2 and OU-3.

Coal tar is known to contain PAH compounds (polycyclic aromatic hydrocarbons) in exceedance of sediment guidance values. Coal tar was observed in Saranac River sediment throughout the investigation of OU-2 in the form of non-aqueous phase liquid (NAPL) sheens and blebs.

The proposed remedy includes the removal of all sediment visually impacted by coal tar in OU-2.

NYSDEC developed the proposed remedy after reviewing the detailed investigation of the site and evaluating the remedial options in the "feasibility study" submitted under New York's State Superfund Program by New York State Electric and Gas (NYSEG).

Next Steps

NYSDEC will consider public comments as it finalizes the remedy for the site. The selected remedy will be described in a document called a "Record of Decision" that will explain why the remedy was selected and respond to public comments.

Background

Location: The site is located in the City of Plattsburgh, Clinton County, at Saranac Street. The site occupies approximately 11 acres of land in an urban area along the east and south bank of the Saranac River, directly across the river from downtown Plattsburgh. The corner of Saranac and Caroline Streets defines the northeast corner of the site, with Caroline Street forming the eastern site boundary. The remaining three sides are bounded by the Saranac River.

Site Features: Currently the only structures present on-site are temporary structures associated with the recently completed remedial construction for Operable Unit 1 (OU-1).

There are some trees and underbrush along the river bank, but the rest of the site is currently free of vegetation. Several large electrical transmission towers are located along the northern site boundary, and a buried sewer line crosses the southern portion of the site and then runs along Caroline Street.

Current Zoning/Use(s): The site is zoned for light industrial use and the central portion is currently owned by NYSEG. The City of Plattsburgh owns the land between the top of bank down to the edge of water around the entire site. The site is unused, with the exception of an electrical substation located near the Saranac River. The nearest residences are on the east side of Caroline Street, approximately 50 feet from the site boundary. Off-site Operable Unit 2 (Saranac River) and Operable Unit 3 (Cumberland Bay) are not privately owned and considered waters of New York.

Past Use of the Site: From approximately 1896 to 1960, the site housed a manufactured gas plant (MGP). The MGP used coal and petroleum products to produce flammable gas, which was used in much the same way that natural gas is used today. The gas manufacturing process produced large quantities of two different waste materials (coal tar and gas purifier waste), both of which were disposed on site.

Operable Units: The site is divided into three operable units. An operable unit represents a portion of a remedial program for a site that for technical or administrative reasons can be addressed separately to investigate, eliminate or mitigate a release, threat of release or exposure pathway resulting from the site contamination. Operable Unit 1 (OU-1) is the on-site source area covering the area of former MGP structures and the section of the Saranac River from approximately 300 feet upstream of the wooden footbridge which was removed in 2016 that was located at the end of Caroline Street and the Kennedy Bridge. Operable Unit 2 (OU-2) includes the section of the Saranac River downstream of the former Kennedy Bridge. Operable Unit 3 (OU-3) includes the portion of Cumberland Bay within Lake Champlain impacted by coal tar. Remedial construction in OU-1 is complete.

Site Geology and Hydrogeology: The site is underlain by several layers of overburden consisting of unconsolidated soils overlying limestone bedrock. A thin layer of man-placed fill covers the entire site. The depth of this fill ranges from a few feet to 21 feet across the site. The fill consists of a complex mix of reworked site soils, building demolition debris and soils brought from outside sources. The groundwater that can be found at a depth between 8 to 15 feet flows toward the Saranac River within the man-made fill layer and the layer of coarse grained alluvium. Off-site Saranac River sediments (OU-2) generally consist of cobbles ranging from 6 inches to 2 feet in diameter underlain by till where present, and bedrock.

State Superfund Program: New York's State Superfund Program (SSF) identifies and characterizes suspected inactive hazardous waste disposal sites. Sites that pose a significant threat to public health and/or the environment go through a process of investigation, evaluation, cleanup and monitoring.

NYSDEC attempts to identify parties responsible for site contamination and require cleanup before committing State funds.

For more information about the SSF, visit: <http://www.dec.ny.gov/chemical/8439.html>

FOR MORE INFORMATION

Where to Find Information

Project documents are available at the following location(s) to help the public stay informed.

Plattsburgh Public Library
19 Oak Street
Plattsburgh, NY 12901-2810
phone: (518) 563-0921

Who to Contact

Comments and questions are always welcome and should be directed as follows:

Project Related Questions

Bill Bennett
Department of Environmental Conservation
Division of Environmental Remediation
625 Broadway
Albany, NY 12233-7014
518-402-9659
william.bennett@dec.ny.gov

Site-Related Health Questions

Wendy S. Kuehner, P.E.
New York State Department of Health
Bureau of Environmental Exposure Investigation
Empire State Plaza, Corning Tower, Room 1787
Albany, NY 12237
(518) 402-7860
BEEI@health.ny.gov

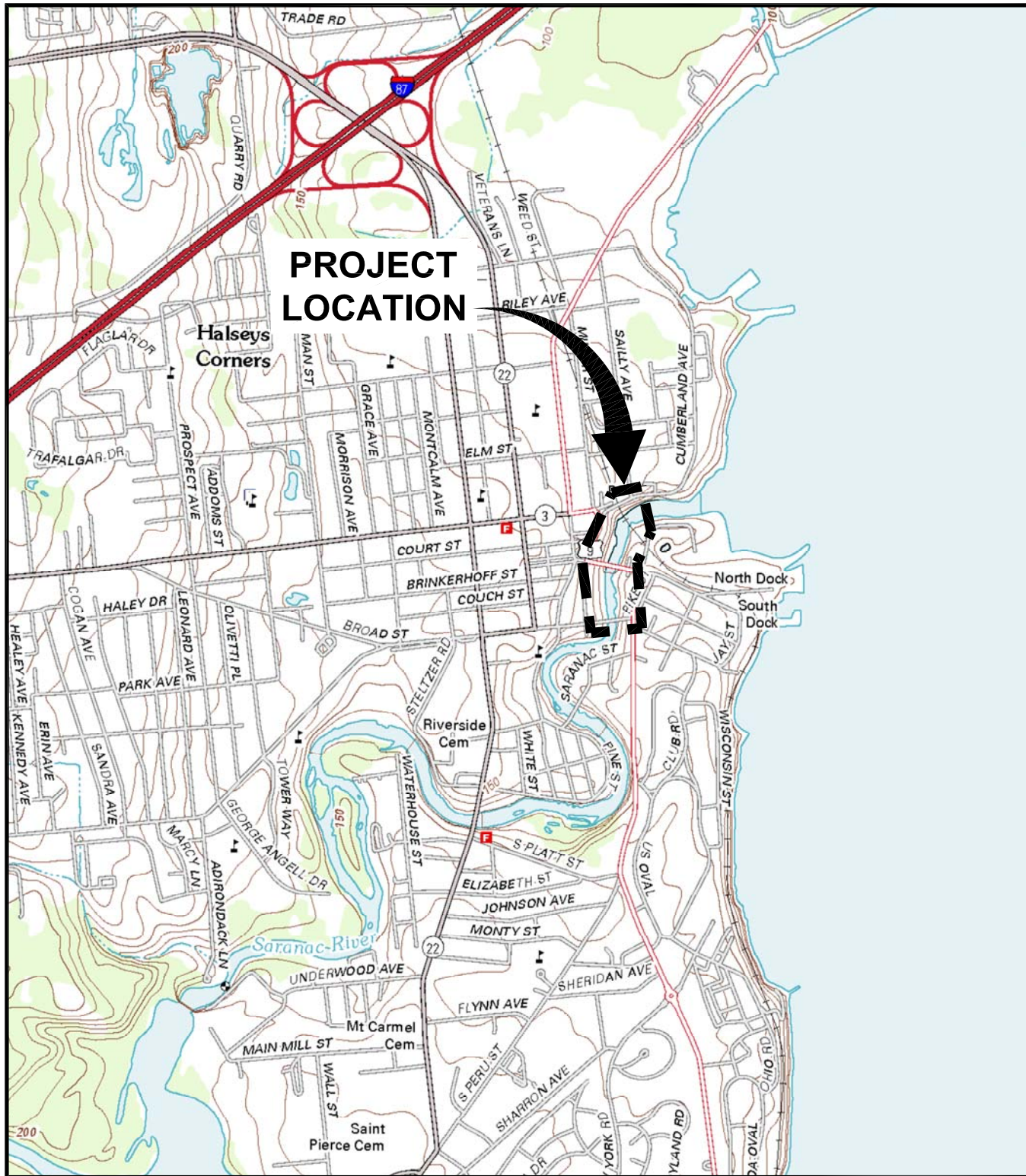
We encourage you to share this fact sheet with neighbors and tenants, and/or post this fact sheet in a prominent area of your building for others to see.

Receive Site Fact Sheets by Email

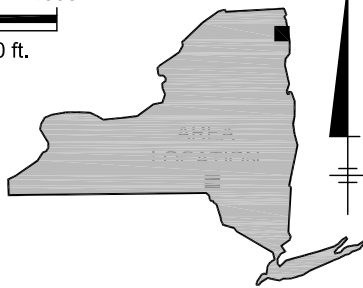
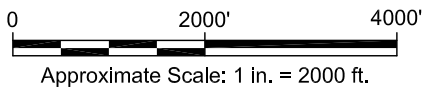
Have site information such as this fact sheet sent right to your email inbox. NYSDEC invites you to sign up with one or more contaminated sites county email listservs available at the following web page: <http://www.dec.ny.gov/chemical/61092.html>. It's quick, it's free, and it will help keep you *better informed*.

As a listserv member, you will periodically receive site-related information/announcements for all contaminated sites in the county(ies) you select.





REFERENCE: BASE MAP USGS 7.5 MINUTE QUADRANGLE., PLATTSBURGH, N.Y. - VT., 2013.



NEW YORK

NYSEG
PLATTSBURGH (SARANAC STREET) FORMER MGP SITE
PLATTSBURGH, NEW YORK
FOCUSED FEASIBILITY STUDY (OU-2)

SITE LOCATION MAP



ARCADIS

Design & Consultancy
for natural and
built assets

FIGURE

1