

D. Steenberg

**FACT SHEET  
GLOVERSVILLE MUNICIPAL LANDFILL**

**CITY OF GLOVERSVILLE, FULTON COUNTY, SITE NO. 5-18-001**

**MARCH 31, 1996**

**INTRODUCTION**

The City of Gloversville, with New York State Department of Environmental Conservation (NYSDEC) approval, has awarded a contract for the remedial closure of the Gloversville Landfill site (see attached map). A second contract to install a municipal waterline extension is scheduled to start in the spring.

**SITE BACKGROUND**

Due to past disposal practices and preliminary site investigations, the Gloversville Landfill was closed in July 1989 as required by a New York State Department of Law Order on Consent. The Order on Consent requires the City to remediate the site and a Remedial Investigation/Feasibility Study (RI/FS) was conducted to define the nature and extent of any contamination at the site. The RI/FS concluded that the following goals must be met:

- Reduce, control, or eliminate the generation of leachate within the fill mass.
- Eliminate the threat to surface waters by eliminating any future contamination surface run-off from the contaminated soils on site.
- Prevent to the extent possible, migration of contaminants in the landfill to groundwater.

- Provide for attainment of SCGs for groundwater and surface water quality at the limits of the area of concern.

On February 14, 1994, a Record of Decision (ROD) outlining the selected remedy was signed. In addition to site monitoring, the installation of a public awareness program and restricting site access, the ROD called for the site to be remediated in two steps. First, a Part 360 landfill cap must be placed over the landfill. Second, the City waterline is to be extended to provide access to homes with drinking water potentially impacted by the landfill.

**LANDFILL CAP (CONTRACT NO. 1)  
CURRENT STATUS**

On November 15, 1995, bids were opened for Contract No. 1 and Rifenburg Construction, Inc., was the low bidder at a total cost of \$6,374,666. In February, the contractor began work. Currently, the contractor is relocating waste from the perimeter of the landfill to the central portion. The purpose of this action is to provide steeper side slopes and lessen the total area which needs to be capped. Since this activity tends to cause odor problems during the spring and summer, the contractor is expediting the waste relocation phase while neighboring windows are closed and outdoor air temperature is lower. The contractor is working 18 hour days from 7:00 a.m. to 1 a.m.

By April 15, 1996, the contractor will resume normal operating hours. At that time, the contractor will construct an impermeable cap over the entire landfill. The cap will divert the rainfall from percolating through the landfill waste and leaching into the groundwater below. The cap itself will be comprised of 12 inches of a gas venting layer, a 40 mil synthetic geomembrane, 24 inches of barrier protection material and 6 inches of topsoil. Gas vents will be placed throughout the landfill to vent methane gas and the entire site will be seeded to promote grass growth. The estimated completion time for Contract No. 1 is November 1996.

#### **MUNICIPAL WATERLINE EXTENSION (CONTRACT NO. 2) CURRENT STATUS**

As part of the selected remedy, the Gloversville City waterline will be extended (see attached map) around the perimeter of the landfill. This action will provide safe drinking water to those homes whose wells may be potentially impacted by the landfill. Contract No. 2 is scheduled to begin in the spring of 1996.

#### **ALTERNATIVE GRADING MATERIAL (AGM) PROGRAM UPDATE**

To compensate for a portion of the landfill cost, the City of Gloversville is accepting construction debris as alternative grading material for the landfill's sub-base. Instead of paying for clean fill for the sub-base (which is needed to develop minimum slopes for shedding water off the landfill), the City is receiving money from various facilities to dispose of their waste at the Gloversville Landfill. To date, approximately 70% of the needed fill has been replaced by AGM. This program will continue until Rifenburg Construction begins work on the landfill cap.

#### **FOR MORE INFORMATION**

To review important documents and other information about the Gloversville Landfill or waterline projects, document repositories are located at the following sites:

Gloversville City Clerk's Office  
City Hall  
Frontage Road  
Gloversville, NY

Fulton-Montgomery Community College  
Library  
Route 67  
Johnstown, NY

Gloversville Free Library  
E. Fulton Street  
Gloversville, NY

NYSDEC  
Room 281  
50 Wolf Road  
Albany, NY

You may direct questions about the Gloversville Landfill cleanup program to the following people:

The City of Gloversville contact is Mr. Gary Lukenheimer, Jr. Engineer, Dept. of Public Works at 773-4556

The New York State Department of Environmental Conservation (NYSDEC) contact is Mr. Craig Lapinski, 50 Wolf Road, Albany, NY, at (518) 457-9280.

The New York State Department of Health (NYSDOH) contact is Mr. Richard Fedigan or Ms. Susan VanPatten, Albany office at (518) 458-6306 or 1-800-458-1158 ext. 306.



SOURCE NO. USGS GLOVERSVILLE QUADRANGLE

FIGURE I

LOCUS PLAN

MUNICIPAL SANITARY LANDFILL  
GLOVERSVILLE, N.Y.

TIGHE & BOND INC. CONSULTING ENGINEERS  
WESTFIELD, MASS.

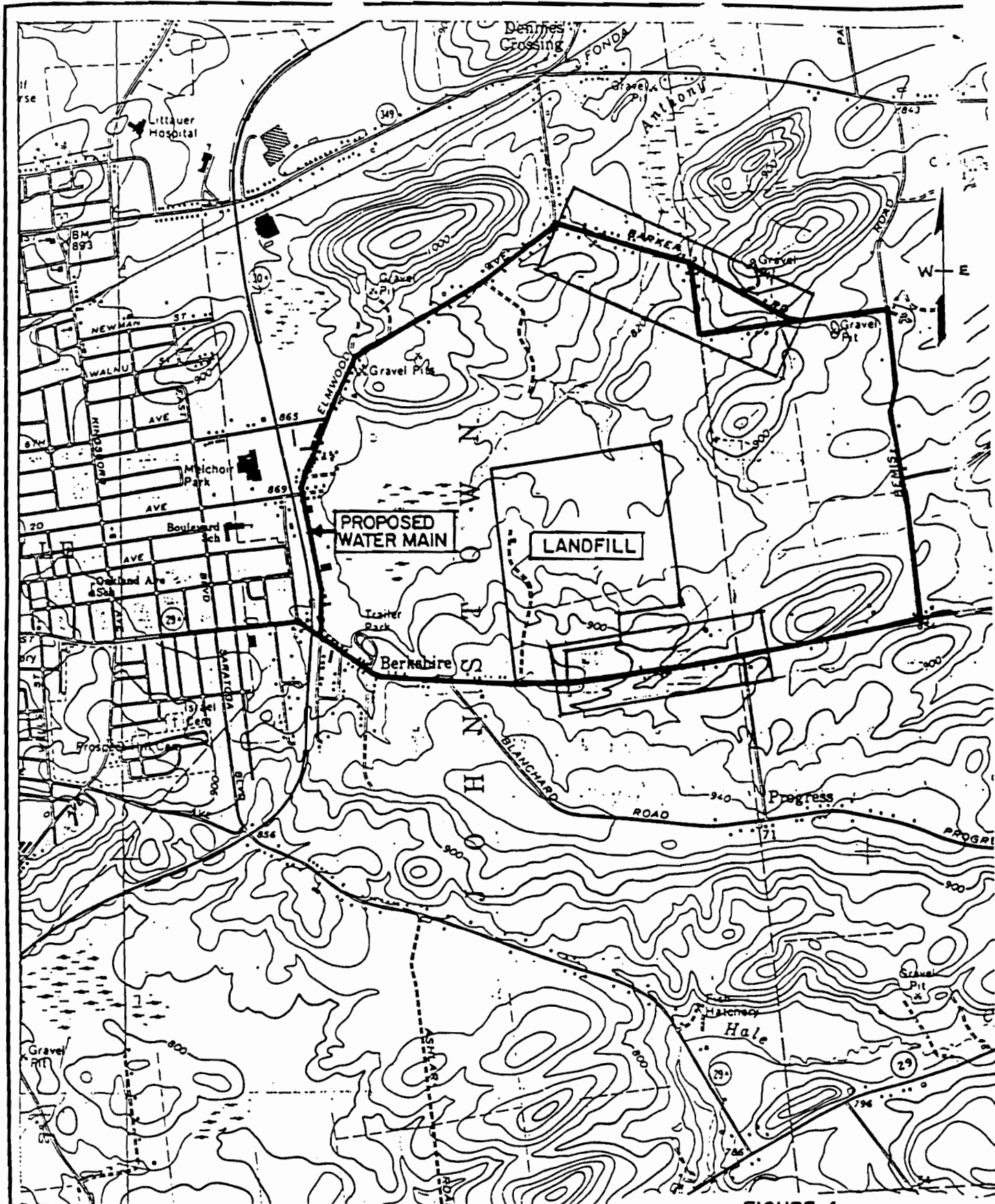


FIGURE 4

SOURCE: USGS GLOVERSVILLE QUADRANGLE

— WATER MAIN ROUTE  
 - - - AREA OF IMPACTED PRIVATE WELLS

PROPOSED  
WATER MAIN ROUTING

MUNICIPAL SANITARY LANDFILL  
GLOVERSVILLE, N.Y.