

December 31, 2011

Mr. Bradley Brown
New York State Department of Environmental Conservation
Region 4 Headquarters
1130 North Westcott Road
Schenectady, NY 12306

RE: National Grid Hill Street Site – Gloversville, NY
December 2011 Semi-Annual OM&M Report

Dear Mr. Brown:

This letter report serves as the semi-annual Operations, Maintenance, and Monitoring (OM&M) Report for the National Grid Hill Street Site in Gloversville, NY. This report includes the following information:

- Groundwater Treatment System History and Description
- Summary of routine and non routine site OM&M activities (July 2011 – December 2011);
- Analytical results for the semi-annual effluent discharge sampling event (September 27, 2011);
- Operational data for the water treatment system (July 2011 – December 2011);
- Summary of planned site OM&M activities (January 2012 – June 2012).

Groundwater Treatment System History and Description

- The Groundwater Treatment System construction was completed in April 2007. ARCADIS conducted start-up and operated the water treatment system from April 2007 through mid August 2007. CDM OM&M personnel shadowed ARCADIS during a transitional period and took over the OM&M contractor role on August 16, 2008. CDM has been operating the water treatment system continuously from August 16, 2008 to the present.
- Groundwater and storm water is separated on site. Storm water is collected and discharged via gravity directly to the storm water ditch and settling pond. Groundwater is collected by the groundwater collection pipe network and flows under hydraulic head to two collection sumps (NMH-1 and NMH-6). Groundwater contaminated with MGP-related constituents is pumped from NMH-1 and NMH-6 into the Groundwater Treatment System.
- Since assuming the OM&M contractor role at the site, CDM has made significant modifications to the system to improve efficiencies and meet compliance requirements. The major modifications were conducted from January 2009 to November 2009 and

included the following major elements: 1) replaced the Oil/Water Separator (OWS); 2) replaced the bag filter unit; 3) added a backwash storage tank; 4) replaced the chemical treatment system. As a result of these modifications, on-site labor has been reduced from 3 days per week to 1 day per week. Also, media change-out frequency has been reduced and increased influent flows during rain storms can be handled. Biofouling and iron fouling has been greatly reduced.

- In January 2010 a new stainless steel bag filter unit was installed for the backwash tank at P-903. This unit filters any suspended solids that didn't settle out prior to returning to the system.
- The Groundwater Treatment System consists of the following components:
 - Sequestering agent and metering pump [part of 2009 modifications]. Biocide and metering pump [part of 2009 modifications]. Chemicals are added at NMH-1, NMH-6, and the OWS to reduce bio and iron fouling within the system.
 - A 2,200-gallon conical-bottomed influent settling tank (equalization (EQ) tank) (T-300). The EQ Tank provides buffering capacity for variable flows and time to allow solids to settle.
 - An oil/water separator (OWS) (T-400) [part of 2009 modifications]. Plastic media with significant surface area is utilized to separate Light Non Aqueous Phase Liquids (LNAPL) and Dense Non Aqueous Phase Liquids (DNAPL) from the gravity water stream.
 - A 1,850-gallon transfer tank (T-500). This tank receives water from OWS and serves as a storage tank for transfer pumps to send water through the bag filter unit and treatment vessels.
 - Two transfer tank pumps (P-501 and P-502) pump water from T-500. They are equipped with variable frequency drives (VFDs) to accommodate variable flows through the system.
 - An eight bag filter unit (BF-500) [part of 2009 modifications]. A single unit with eight bag filters built within is utilized to remove larger solid particles and oils from the pressurized water stream.
 - Two 34-cubic-foot Organoclay vessels (OC-601 and OC-602). Media within pressure vessels further filters solid particles and oils from the water stream.
 - Two 68-cubic-foot granular activated carbon (GAC) vessels (C-701 and C-702). GAC is used to adsorb Volatile Organic Compounds (VOCs) such as Benzene, Toluene, Ethylbenzene, and Xylene (BTEX) from the water stream.
 - Two 34-cubic-foot anion resin vessels (AR-801 and AR-802). Granular resin media contained within the pressure vessels is used to adsorb Cyanide from the water stream.

- A 1,850-gallon effluent tank (T-900). The treated water storage effluent tank is used for backwashing the GAC and Organoclay vessels. Remaining water from the effluent tank is pumped to the POTW sewer.
- Two effluent tank pumps (P-901 and P-902). These pumps are utilized for backwashing the GAC and Organoclay vessels as well as discharging treated water to the POTW sewer.
- A 3600-gallon backwash storage tank (T-1000) [part of 2009 modifications]. This tank receives backwash waters from the vessels and allows solids to settle. Water is then returned to either T-300 or T-500. Solids are directly removed via vacuum truck during tank cleaning events.
- Programmable Logic Controller (PLC). The system is automated and can be operated remotely.

Attachment A presents the Site Location Map [Figure 1], the Site Layout Plan [Figure 2], the Groundwater Treatment System Piping and Equipment Layout [Figure 3], and the System Piping and Instrumentation Diagram (P&ID) [Figure 4]. It should be noted that the original as-built drawings (ARCADIS 2008) have been modified to reflect the system modifications and are presented as Figures 3 and 4.

Summary of Routine and Non-Routine OM&M Activities (July 2011 – December 2011)

CDM conducted the following routine OM&M Activities at the site:

- ✓ Weekly groundwater treatment system inspections and monthly site inspections [weekly and monthly inspection sheets are presented in **Attachment B**];
- ✓ Weekly backwashing of the 6 media vessels;
- ✓ Weekly bag filter change-outs;
- ✓ Weekly documentation of system flows, pressures, media utilization;
- ✓ Coordinate with National Grid facility personnel regarding regular chemical/material deliveries;
- ✓ Snow removal around the treatment building and NMH-6 during inclement weather (none during this period);
- ✓ Weed trimming within the storm water riprap channel.

CDM conducted the following nonroutine OM&M Activities at the site:

- During the July 5, 2011 inspection, a small water leak within the PVC pipe associated with P-202 was discovered.
- The leak was repaired on July 12, 2011.
- On July 28, 2011, NG's facility manager notified CDM that a small sink hole in the blacktop and gravel base had been observed behind the service center garage. CDM met NG at the site that afternoon. It appeared that the asphalt/stone base had settled approximately 1 foot deeper than the bottom of the footer in an area above one of the main groundwater conveyance lines. Water flow could be heard and the base material that could be felt from the surface was relatively dry. The location or condition of this

line has never been verified due to a blockage although several attempts have been made by GroutTech with their video feed and snake apparatus. CDM inspected manways NMH-1, NMH-4 and NMH-5 and observed no silt/stone or debris in the manways. CDM suggested NG fill the void with small crushed stone. The area will be monitored each week for further settling.

- On August 16, 2011, Clean Harbors transported two 1 cubic yard pallet packs of Oil Water Separator media, thirteen 55 gallon drums of PPE/sorbents/piping, and 1,349 gallons of system-related contaminated water off-site. The waste materials were disposed of as hazardous at a National Grid-approved facility.
- Following notification to GJJWTF and NYSDEC, the biocide chemical treatment (B-15) was replaced by a new product (Redux 620A biocide) on August 22, 2011. The Redux 620A biocide was field tested and proven to be more cost effective.
- GroutTech completed the annual storm water and groundwater conveyance systems video inspections on September 8-9, 2011.
- During September, 2011, materials to upgrade the influent piping in NMH-6 and influent lines within the treatment building from the EQ Tank and OWS were ordered. Recent NAPL upsets have created leaks within the Schedule 80 PVC pipe. The PVC pipe will be replaced with stainless steel pipe.
- On October 17, 2011, NG submitted the annual GJJWTF permit renewal application.
- During the week of October 17, 2011, CDM and RCAC Inc. replaced the PVC piping in NMH-6 with stainless steel piping. Also, stainless steel pump rail systems were installed within NMH-6. The PVC piping influent lines from NMH-1 and NMH-6 from the floor penetrations to the influent tank (tank T-300) were replaced with stainless steel piping and valves. The backwash and floor sump piping were re-plumbed into the influent tank to have their own influent locations. NMH-6 and NMH-1 are now piped separately to a new manifold on top of the influent tank. The previous piping configuration included the NMH-1 force main connected directly into the NMH-6 force main which caused flow interferences. Also, the backwash piping and floor sump piping previously connected into the NMH-6 force main prior to entering the influent tank. Now, independent piping enters the influent tank eliminating flow interferences.
- The NMH-6 duty submersible pump was replaced with the spare unit and sent in for evaluation. The standby submersible pump was cleaned/maintained and reinstalled.
- On October 18, 2011, replaced pump P-102 for evaluation due to pump seal alarm(s).
- In October 2011, CDM and Eviromation evaluated the NMH-6 flow meter due to a malfunction.
- In October 2011, evaluated bypass Organoclay pressure vessels to serve as sacrificial media during future NAPL upsets. The vessel would be connected and valved between the EQ Tank and OWS and be used only during upset conditions.
- On November 10, 2011, took delivery of a large order of system chemicals (biocide and sequestering agent).

Analytical results for the semi-annual effluent discharge sampling event (September 2011)

On September 8-9, 2011, CDM conducted the semi-annual effluent water discharge monitoring event. The effluent water was submitted to Test America for analysis. Test America submitted the analytical report on September 27, 2011. The analytical results indicated no exceedances

above the Gloversville-Johnstown Wastewater Treatment Facility Discharge Permit #133 limits. The analytical results are presented in **Attachment C**.

To date, there have been no exceedances of Discharge Permit #133 as part of the semi-annual effluent water discharge monitoring events.

Operational data for the water treatment system (July 1, 2011 – December 31, 2011)

For the period July 1, 2011 through December 31, 2011, the water treatment system has treated and discharged approximately 12,200,000 gallons of water to the POTW sewer at an average flow of 45 gpm. Note that the system operates in continuous batch mode. Water is pumped from component to component within the system at a maximum instantaneous flow rate of 75 gpm. An operational data summary table for this period is presented in **Attachment D**.

To date, approximately 63 Million gallons have been successfully treated and discharged without a permit exceedance.

Summary of planned OM&M activities (January 1, 2012 – June 30, 2012)

Below are OM&M activities planned for the next six months:

- Conduct weekly site-wide inspections as well as water treatment system inspections. Document the inspections.
- Operate the water treatment system in continuous batch mode. Now that the influx of NAPL has subsided from NMH-6, it is anticipated that 1 on-site day per week will be required for routine maintenance activities (i.e., bag filter change-outs; vessel/pump pressure checks). The system is monitored remotely on a continuous basis. If an unforeseen condition arises, CDM will respond immediately and remedy the situation.
- Conduct semi-annual cleaning of the manholes, tanks, building sump, and OWS.
- Conduct semi-annual operational sampling/analysis to evaluate treatment effectiveness. Conduct media change-outs (Organoclay, GAC, and Resin), if needed.
- Conduct the semi-annual treated water discharge sampling event in April 2012.
- Prepare a semi-annual OM&M report for January 1, 2012 through June 30, 2012 and submit to NYSDEC and GJJWTF.
- Replacement of PVC piping with stainless steel piping within NMH-6 and within the treatment building was completed back in October 2011 to address potential NAPL upset conditions. Additional system modifications including installation of a sacrificial bypass pressure vessel (Organoclay) will be completed over the next few months. The system layout drawing (Figure 3) and P&ID (Figure 4) will be revised at that time and be included in the next semi-annual report.

Mr. Bradley Brown

December 31, 2011

Page 6 of 6

If you have any questions, please feel free to contact me at 315.428.5652.

Sincerely,

 for SPS

Steven P. Stucker, C.P.G.

Lead Environmental Engineer

cc: Mark Levendusky - GJJWTF

Matt Millias – CDM

Tim Beaumont – CDM

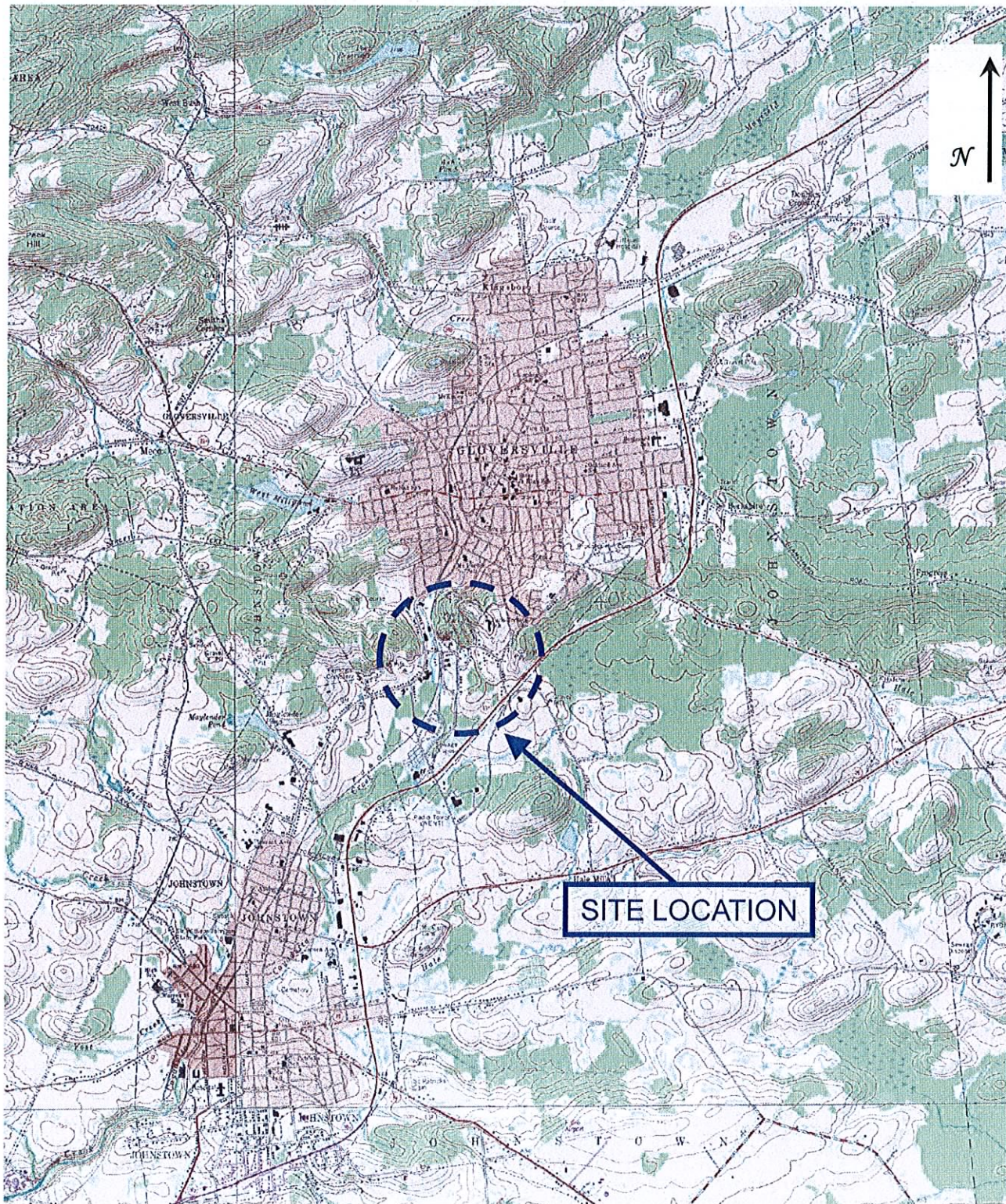
ATTACHMENT A

Figure 1 - Site Location Map

Figure 2 - Site Plan

Figure 3 – Water Treatment System Layout

Figure 4 – Water Treatment System P&ID



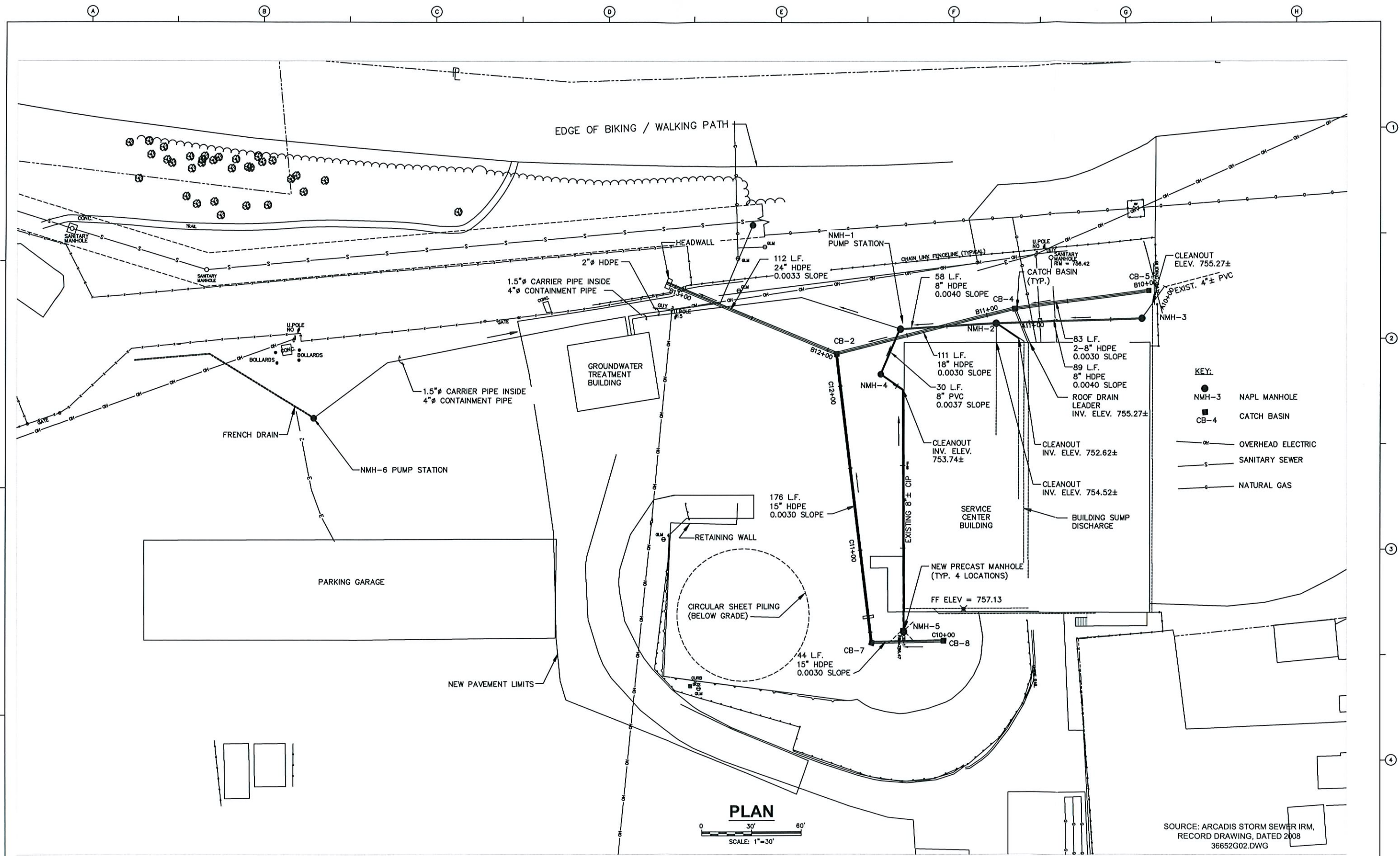
QUADRANGLE LOCATION

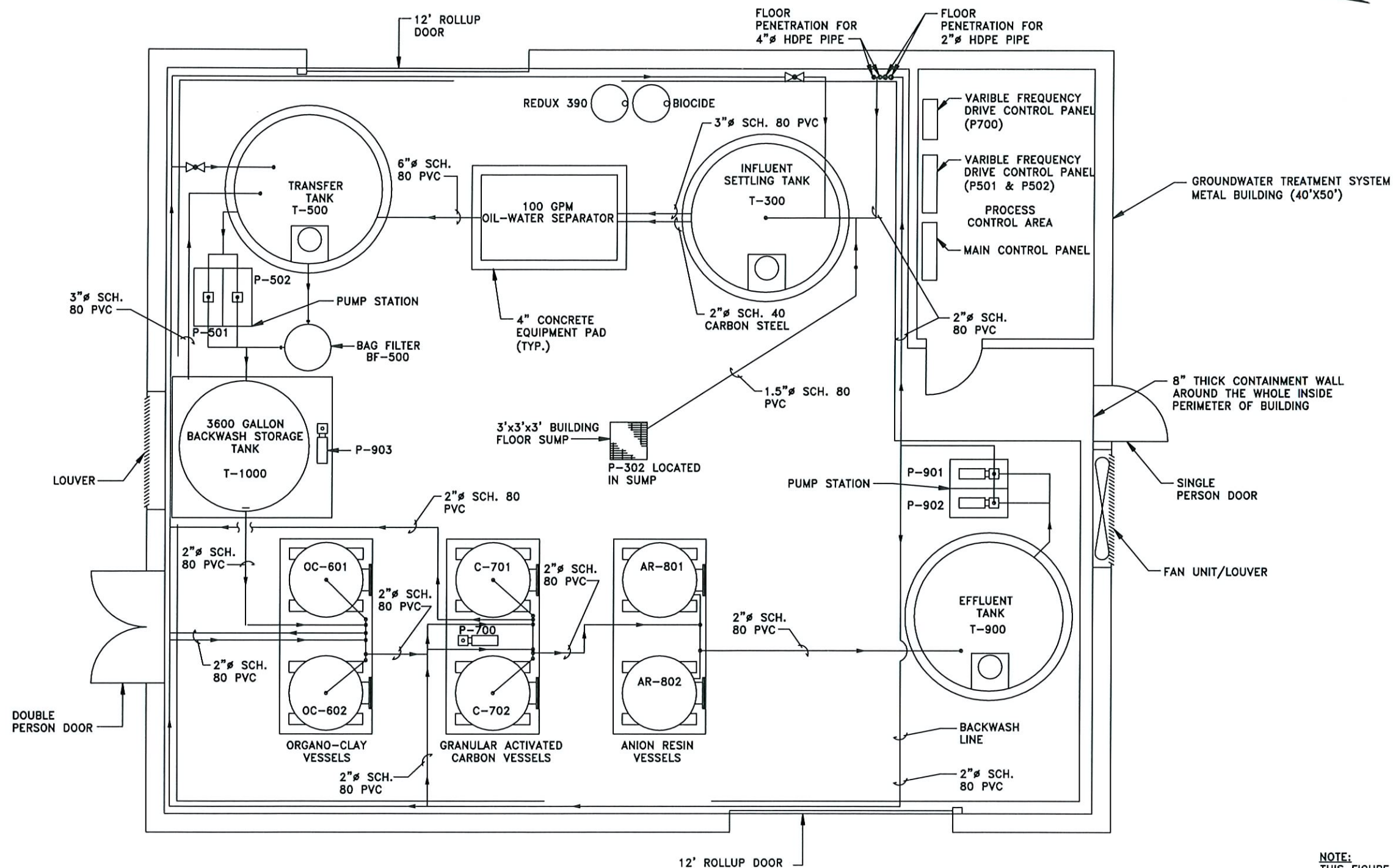
NATIONAL GRID GLOVERSVILLE
(HILL STREET) FORMER MGP
GLOVERSVILLE, NEW YORK

SITE LOCATION MAP

CDM

Figure
1





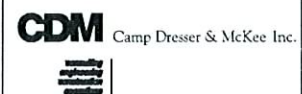
PLAN
NOT TO SCALE

NOTE:
THIS FIGURE REPRESENTS THE
AS-BUILT CONDITIONS FOLLOWING
THE SYSTEM MODIFICATIONS AS
DESCRIBED IN THE REPORT.

SOURCE: ARCADIS STORM SEWER IRM,
RECORD DRAWING, DATED 2008
36652M02.DWG

This drawing will be updated following completion
of system modifications which started 10/17/11.

NOT TO SCALE



NATIONAL GRID
GLOVERSVILLE, NEW YORK

OM&M PLAN

GROUNDWATER TREATMENT SYSTEM PIPING AND EQUIPMENT LAYOUT

PROJECT NO.
FILE NAME:

FIGURE
3

ATTACHMENT B

Monthly Site Inspection Forms (July 2011 – December 2011)

Water Treatment System Inspection Forms (July 2011 – December 2011)

Date: 12/28/2011

Time: 11:00

National Grid
Gloversville, New York

Technician: JR

Weather: Rain 36 °

Weekly Groundwater Treatment System OM&M Checklist

Inspection	Completed		Comments
Treatment building in good condition?	Yes	No	
Emergency key in lock box?	Yes	No	
Security lights operating and in good condition?	Yes	No	
Lighting operating and in good condition?	Yes	No	
Ventilation operating and in good condition?	Yes	No	
Heating units operating and in good condition?	Yes	No	
Fire Extinguishers in good condition?	Yes	No	
First aid kit and eye wash in good condition?	Yes	No	
Biocide pumps operating and in good condition?	Yes	No	
Clean Biocide pumps?	Yes	No	
Number of extra Biocide drums? Redux 620A	3		
Redux 340 pump operating and in good condition?	Yes	No	
Clean Redux 340 pump?	Yes	No	
Number of extra Redux 340 drums?	2		
Redux 390 pumps operating and in good condition?	Yes	No	
Clean Redux 390 pumps?	Yes	No	
Number of extra Redux 390 drums?	2		
Building floor sump pump operational?	Yes	No	
Clean building floor sump?	Yes	No	Cleaned 12/6/2011
Influent Tank 300 in good condition and free of leaks?	Yes	No	
Influent Tank 300 sediment?	Yes	No	Cleaned 6/21/2011 Clean Harbors
Change LNAPL boom from inside influent tank?	Yes	No	
OWS in good condition and free of leaks?	Yes	No	
OWS hopper sediment?	Yes	No	Cleaned 12/6/2011
OWS media in good condition?	Yes	No	New Media 6/21/2011
Clean OWS media?	Yes	No	Cleaned 12/6/2011
Change LNAPL booms from inside OWS?	Yes	No	
Any LNAPL in OWS?	Yes	No	amount?
OWS effluent Tank 500 in good condition and free of leaks?	Yes	No	Cleaned 6/21/2011 Clean Harbors
OWS effluent Tank 500 sediment?	Yes	No	amount?
Change LNAPL boom from inside OWS effluent tank?	Yes	No	
Pump P-501 operating and in good condition?	Yes	No	New unit 1/18/2011
Pump P-502 operating and in good condition?	Yes	No	New Stack Kit 3/8/2011
PRV-500 pressure relief valve operating at 75psi?	Yes	No	
Bag filter unit operating and in good condition?	Yes	No	
Number of extra 10 Micron bags?	61		Order more when level reaches 30
Organo Clay OR-601 operating and in good condition?	Yes	No	parallel new media 3/22/2011
Organo Clay OR-602 operating and in good condition?	Yes	No	parallel new media 3/23/2011
Carbon C-701 operating and in good condition?	Yes	No	parallel new media 3/23/2011
Carbon C-702 operating and in good condition?	Yes	No	parallel new media 3/22/2011
Arion Resin AR-801 operating and in good condition?	Yes	No	parallel new media 3/22/2011
Arion Resin AR-802 operating and in good condition?	Yes	No	parallel new media 3/22/2011
Calibrate PH and temperature meter?	Yes	No	
BW storage water Tank 900 in good condition and free of leaks?	Yes	No	
BW storage water Tank 900 sediment?	Yes	No	
Treated water is clear and free of odor?	Yes	No	
Pump P-901 operating and in good condition?	Yes	No	New unit 1/18/2011
Pump P-902 operating and in good condition?	Yes	No	Rebuilt unit 3/8/2011
GJJWTF meter operating and in good condition?	Yes	No	
BW water Tank 1000 in good condition and free of leaks?	Yes	No	
BW water Tank 1000 sediment?	Yes	No	Cleaned 8/16/2011 Clean Harbors
Pump P-903 operating and in good condition?	Yes	No	
NMH-1 manway cover in good condition?	Yes	No	Cleaned 6/21/2011 Clean Harbors
NMH-1 pump panel operating and in good condition?	Yes	No	
NMH-1 internal piping and electrical in good condition?	Yes	No	
Change LNAPL boom in NMH-1?	Yes	No	
Pump P-101 operating?	Yes	No	New unit 6/21/2011
Pump P-102 operating?	Yes	No	Rebuilt unit 12/6/2011
NMH-6 manway cover in good condition?	Yes	No	Cleaned 8/16/2011 Clean Harbors
NMH-6 pump panel operating and in good condition?	Yes	No	
NMH-6 internal piping and electrical in good condition?	Yes	No	
Change LNAPL boom in NMH-6?	Yes	No	
Pump P-201 operating?	Yes	No	New unit 10/17/2011
Pump P-202 operating?	Yes	No	Rebuilt unit 10/17/2011

Date: 12/21/2011

Time: 10:45

National Grid
Gloversville, New York

Technician: JR

Weather: Rain 36 °

Weekly Groundwater Treatment System OM&M Checklist

Inspection	Completed		Comments
Treatment building in good condition?	Yes	No	
Emergency key in lock box?	Yes	No	
Security lights operating and in good condition?	Yes	No	
Lighting operating and in good condition?	Yes	No	
Ventilation operating and in good condition?	Yes	No	
Heating units operating and in good condition?	Yes	No	
Fire Extinguishers in good condition?	Yes	No	
First aid kit and eye wash in good condition?	Yes	No	
Biocide pumps operating and in good condition?	Yes	No	
Clean Biocide pumps?	Yes	No	
Number of extra Biocide drums? Redux 620A	3		
Redux 340 pump operating and in good condition?	Yes	No	
Clean Redux 340 pump?	Yes	No	
Number of extra Redux 340 drums?	2		
Redux 390 pumps operating and in good condition?	Yes	No	
Clean Redux 390 pumps?	Yes	No	
Number of extra Redux 390 drums?	2		
Building floor sump pump operational?	Yes	No	
Clean building floor sump?	Yes	No	Cleaned 12/6/2011
Influent Tank 300 in good condition and free of leaks?	Yes	No	
Influent Tank 300 sediment?	Yes	No	Cleaned 6/21/2011 Clean Harbors
Change LNAPL boom from inside influent tank?	Yes	No	
OWS in good condition and free of leaks?	Yes	No	
OWS hopper sediment?	Yes	No	Cleaned 12/6/2011
OWS media in good condition?	Yes	No	New Media 6/21/2011
Clean OWS media?	Yes	No	Cleaned 12/6/2011
Change LNAPL booms from inside OWS?	Yes	No	
Any LNAPL in OWS?	Yes	No	amount?
OWS effluent Tank 500 in good condition and free of leaks?	Yes	No	Cleaned 6/21/2011 Clean Harbors
OWS effluent Tank 500 sediment?	Yes	No	amount?
Change LNAPL boom from inside OWS effluent tank?	Yes	No	
Pump P-501 operating and in good condition?	Yes	No	New unit 1/18/2011
Pump P-502 operating and in good condition?	Yes	No	New Stack Kit 3/8/2011
PRV-500 pressure relief valve operating at 75psi?	Yes	No	
Bag filter unit operating and in good condition?	Yes	No	
Number of extra 10 Micron bags?	69		Order more when level reaches 30
Organo Clay OR-601 operating and in good condition?	Yes	No	parallel new media 3/22/2011
Organo Clay OR-602 operating and in good condition?	Yes	No	parallel new media 3/23/2011
Carbon C-701 operating and in good condition?	Yes	No	parallel new media 3/23/2011
Carbon C-702 operating and in good condition?	Yes	No	parallel new media 3/22/2011
Arion Resin AR-801 operating and in good condition?	Yes	No	parallel new media 3/22/2011
Arion Resin AR-802 operating and in good condition?	Yes	No	parallel new media 3/22/2011
Calibrate PH and temperature meter?	Yes	No	
BW storage water Tank 900 in good condition and free of leaks?	Yes	No	
BW storage water Tank 900 sediment?	Yes	No	
Treated water is clear and free of odor?	Yes	No	
Pump P-901 operating and in good condition?	Yes	No	New unit 1/18/2011
Pump P-902 operating and in good condition?	Yes	No	Rebuilt unit 3/8/2011
GJJWTF meter operating and in good condition?	Yes	No	
BW water Tank 1000 in good condition and free of leaks?	Yes	No	
BW water Tank 1000 sediment?	Yes	No	Cleaned 8/16/2011 Clean Harbors
Pump P-903 operating and in good condition?	Yes	No	
NMH-1 manway cover in good condition?	Yes	No	Cleaned 6/21/2011 Clean Harbors
NMH-1 pump panel operating and in good condition?	Yes	No	
NMH-1 internal piping and electrical in good condition?	Yes	No	
Change LNAPL boom in NMH-1?	Yes	No	
Pump P-101 operating?	Yes	No	New unit 6/21/2011
Pump P-102 operating?	Yes	No	Rebuilt unit 12/6/2011
NMH-6 manway cover in good condition?	Yes	No	Cleaned 8/16/2011 Clean Harbors
NMH-6 pump panel operating and in good condition?	Yes	No	
NMH-6 internal piping and electrical in good condition?	Yes	No	
Change LNAPL boom in NMH-6?	Yes	No	
Pump P-201 operating?	Yes	No	New unit 10/17/2011
Pump P-202 operating?	Yes	No	Rebuilt unit 10/17/2011

Date: 12/21/2011

Time: 11:00

Technician: JR

Weather: rainy 35 °F

National Grid
Gloversville, New York
Monthly Groundwater and Stormwater Conveyance System Inspection Checklist

Inspection	Completed		Comments
NMH-2 manway in good condition?	Yes	No	debris? None
NMH-2 LNAPL, DNAPL, Odor or seeps?	Yes	No	
NMH-3 manway in good condition?	Yes	No	debris? None
NMH-3 LNAPL, DNAPL, Odor or seeps?	Yes	No	
NMH-4 manway in good condition?	Yes	No	debris? None
NMH-4 LNAPL, DNAPL, Odor or seeps?	Yes	No	
Change LNAPL boom in NMH-4?	Yes	No	
NMH-5 manway in good condition?	Yes	No	debris? None
NMH-5 LNAPL, DNAPL, Odor or seeps?	Yes	No	
Change LNAPL boom in NMH-5?	Yes	No	
CB-2 catchbasin in good condition?	Yes	No	crack around top grate.
CB-2 LNAPL, DNAPL, Odor or seeps?	Yes	No	
CB-4 catchbasin in good condition?	Yes	No	
CB-4 LNAPL, DNAPL, Odor or seeps?	Yes	No	
CB-5 catchbasin in good condition?	Yes	No	cracked around top
CB-5 LNAPL, DNAPL, Odor or seeps?	Yes	No	
CB-7 catchbasin in good condition?	Yes	No	
CB-7 LNAPL, DNAPL, Odor or seeps?	Yes	No	
CB-8 catchbasin in good condition?	Yes	No	debris? None
CB-8 LNAPL, DNAPL, Odor or seeps?	Yes	No	
Security fence secure to drainage ditch?	Yes	No	
Drainage Ditch Headwall in good condition?	Yes	No	
Standing water in drainage ditch?	Yes	No	
Exposed or damaged GCL in drainage ditch?	Yes	No	locations?
Vegetative growth in drainage ditch?	Yes	No	Vegetation removal
Channeling to drainage ditch?	Yes	No	slight areas
Security fence secure to detention pond?	Yes	No	
Odor or sheen in stormwater?	Yes	No	debris?
HDPE liner and anchors in good condition?	Yes	No	
Concrete pavers in good condition?	Yes	No	
Basin outflow pipe flowing	Yes	No	debris?
Signs of detention pond basin overflowing?	Yes	No	

Date: 12/14/2011

Time: 11:15

National Grid
Gloversville, New York

Technician: JR

Weather: CLEAR 41°

Weekly Groundwater Treatment System OM&M Checklist

Inspection	Completed		Comments
Treatment building in good condition?	Yes	No	
Emergency key in lock box?	Yes	No	
Security lights operating and in good condition?	Yes	No	
Lighting operating and in good condition?	Yes	No	
Ventilation operating and in good condition?	Yes	No	
Heating units operating and in good condition?	Yes	No	
Fire Extinguishers in good condition?	Yes	No	
First aid kit and eye wash in good condition?	Yes	No	
Biocide pumps operating and in good condition?	Yes	No	
Clean Biocide pumps?	Yes	No	
Number of extra Biocide drums? Redux 620A	4		
Redux 340 pump operating and in good condition?	Yes	No	
Clean Redux 340 pump?	Yes	No	
Number of extra Redux 340 drums?	2		
Redux 390 pumps operating and in good condition?	Yes	No	
Clean Redux 390 pumps?	Yes	No	
Number of extra Redux 390 drums?	2		
Building floor sump pump operational?	Yes	No	
Clean building floor sump?	Yes	No	Cleaned 12/6/2011
Influent Tank 300 in good condition and free of leaks?	Yes	No	
Influent Tank 300 sediment?	Yes	No	Cleaned 6/21/2011 Clean Harbors
Change LNAPL boom from inside influent tank?	Yes	No	
OWS in good condition and free of leaks?	Yes	No	
OWS hopper sediment?	Yes	No	Cleaned 12/6/2011
OWS media in good condition?	Yes	No	New Media 6/21/2011
Clean OWS media?	Yes	No	Cleaned 12/6/2011
Change LNAPL booms from inside OWS?	Yes	No	
Any LNAPL in OWS?	Yes	No	amount?
OWS effluent Tank 500 in good condition and free of leaks?	Yes	No	Cleaned 6/21/2011 Clean Harbors
OWS effluent Tank 500 sediment?	Yes	No	amount?
Change LNAPL boom from inside OWS effluent tank?	Yes	No	
Pump P-501 operating and in good condition?	Yes	No	New unit 1/18/2011
Pump P-502 operating and in good condition?	Yes	No	New Stack Kit 3/8/2011
PRV-500 pressure relief valve operating at 75psi?	Yes	No	
Bag filter unit operating and in good condition?	Yes	No	
Number of extra 10 Micron bags?	78		Order more when level reaches 30
Organo Clay OR-601 operating and in good condition?	Yes	No	parallel new media 3/22/2011
Organo Clay OR-602 operating and in good condition?	Yes	No	parallel new media 3/23/2011
Carbon C-701 operating and in good condition?	Yes	No	parallel new media 3/23/2011
Carbon C-702 operating and in good condition?	Yes	No	parallel new media 3/22/2011
Arion Resin AR-801 operating and in good condition?	Yes	No	parallel new media 3/22/2011
Arion Resin AR-802 operating and in good condition?	Yes	No	parallel new media 3/22/2011
Calibrate PH and temperature meter?	Yes	No	
BW storage water Tank 900 in good condition and free of leaks?	Yes	No	
BW storage water Tank 900 sediment?	Yes	No	
Treated water is clear and free of odor?	Yes	No	
Pump P-901 operating and in good condition?	Yes	No	New unit 1/18/2011
Pump P-902 operating and in good condition?	Yes	No	Rebuilt unit 3/8/2011
GJJWTF meter operating and in good condition?	Yes	No	
BW water Tank 1000 in good condition and free of leaks?	Yes	No	
BW water Tank 1000 sediment?	Yes	No	Cleaned 8/16/2011 Clean Harbors
Pump P-903 operating and in good condition?	Yes	No	
NMH-1 manway cover in good condition?	Yes	No	Cleaned 6/21/2011 Clean Harbors
NMH-1 pump panel operating and in good condition?	Yes	No	
NMH-1 internal piping and electrical in good condition?	Yes	No	
Change LNAPL boom in NMH-1?	Yes	No	
Pump P-101 operating?	Yes	No	New unit 6/21/2011
Pump P-102 operating?	Yes	No	Rebuilt unit 12/6/2011
NMH-6 manway cover in good condition?	Yes	No	Cleaned 8/16/2011 Clean Harbors
NMH-6 pump panel operating and in good condition?	Yes	No	
NMH-6 internal piping and electrical in good condition?	Yes	No	
Change LNAPL boom in NMH-6?	Yes	No	
Pump P-201 operating?	Yes	No	New unit 10/17/2011
Pump P-202 operating?	Yes	No	Rebuilt unit 10/17/2011

Date: 12/6/2011

Time: 10:30

National Grid
Gloversville, New York

Technician: TB

Weather: Light Rain 48°

Weekly Groundwater Treatment System OM&M Checklist

Inspection	Completed		Comments
Treatment building in good condition?	Yes	No	
Emergency key in lock box?	Yes	No	
Security lights operating and in good condition?	Yes	No	
Lighting operating and in good condition?	Yes	No	
Ventilation operating and in good condition?	Yes	No	
Heating units operating and in good condition?	Yes	No	
Fire Extinguishers in good condition?	Yes	No	
First aid kit and eye wash in good condition?	Yes	No	
Biocide pumps operating and in good condition?	Yes	No	
Clean Biocide pumps?	Yes	No	
Number of extra Biocide drums? Redux 620A	4		
Redux 340 pump operating and in good condition?	Yes	No	
Clean Redux 340 pump?	Yes	No	
Number of extra Redux 340 drums?	2		
Redux 390 pumps operating and in good condition?	Yes	No	
Clean Redux 390 pumps?	Yes	No	
Number of extra Redux 390 drums?	3		
Building floor sump pump operational?	Yes	No	
Clean building floor sump?	Yes	No	Cleaned 12/6/2011
Influent Tank 300 in good condition and free of leaks?	Yes	No	
Influent Tank 300 sediment?	Yes	No	Cleaned 6/21/2011 Clean Harbors
Change LNAPL boom from inside influent tank?	Yes	No	
OWS in good condition and free of leaks?	Yes	No	
OWS hopper sediment?	Yes	No	Cleaned 12/6/2011
OWS media in good condition?	Yes	No	New Media 6/21/2011
Clean OWS media?	Yes	No	Cleaned 12/6/2011
Change LNAPL booms from inside OWS?	Yes	No	
Any LNAPL in OWS?	Yes	No	amount?
OWS effluent Tank 500 in good condition and free of leaks?	Yes	No	Cleaned 6/21/2011 Clean Harbors
OWS effluent Tank 500 sediment?	Yes	No	amount?
Change LNAPL boom from inside OWS effluent tank?	Yes	No	
Pump P-501 operating and in good condition?	Yes	No	New unit 1/18/2011
Pump P-502 operating and in good condition?	Yes	No	New Stack Kit 3/8/2011
PRV-500 pressure relief valve operating at 75psi?	Yes	No	
Bag filter unit operating and in good condition?	Yes	No	
Number of extra 10 Micron bags?	87		Order more when level reaches 30
Organo Clay OR-601 operating and in good condition?	Yes	No	parallel new media 3/22/2011
Organo Clay OR-602 operating and in good condition?	Yes	No	parallel new media 3/23/2011
Carbon C-701 operating and in good condition?	Yes	No	parallel new media 3/23/2011
Carbon C-702 operating and in good condition?	Yes	No	parallel new media 3/22/2011
Arion Resin AR-801 operating and in good condition?	Yes	No	parallel new media 3/22/2011
Arion Resin AR-802 operating and in good condition?	Yes	No	parallel new media 3/22/2011
Calibrate PH and temperature meter?	Yes	No	
BW storage water Tank 900 in good condition and free of leaks?	Yes	No	
BW storage water Tank 900 sediment?	Yes	No	
Treated water is clear and free of odor?	Yes	No	
Pump P-901 operating and in good condition?	Yes	No	New unit 1/18/2011
Pump P-902 operating and in good condition?	Yes	No	Rebuilt unit 3/8/2011
GJJWTF meter operating and in good condition?	Yes	No	
BW water Tank 1000 in good condition and free of leaks?	Yes	No	
BW water Tank 1000 sediment?	Yes	No	Cleaned 8/16/2011 Clean Harbors
Pump P-903 operating and in good condition?	Yes	No	
NMH-1 manway cover in good condition?	Yes	No	Cleaned 6/21/2011 Clean Harbors
NMH-1 pump panel operating and in good condition?	Yes	No	
NMH-1 internal piping and electrical in good condition?	Yes	No	
Change LNAPL boom in NMH-1?	Yes	No	
Pump P-101 operating?	Yes	No	New unit 6/21/2011
Pump P-102 operating?	Yes	No	Rebuilt unit 12/6/2011
NMH-6 manway cover in good condition?	Yes	No	Cleaned 8/16/2011 Clean Harbors
NMH-6 pump panel operating and in good condition?	Yes	No	
NMH-6 internal piping and electrical in good condition?	Yes	No	
Change LNAPL boom in NMH-6?	Yes	No	
Pump P-201 operating?	Yes	No	New unit 10/17/2011
Pump P-202 operating?	Yes	No	Rebuilt unit 10/17/2011

Date: 11/30/2011

Time: 9:30

National Grid
Gloversville, New York

Technician: TB

Weather: Cloudy 45°

Weekly Groundwater Treatment System OM&M Checklist

Inspection	Completed		Comments
Treatment building in good condition?	Yes	No	
Emergency key in lock box?	Yes	No	
Security lights operating and in good condition?	Yes	No	
Lighting operating and in good condition?	Yes	No	
Ventilation operating and in good condition?	Yes	No	
Heating units operating and in good condition?	Yes	No	
Fire Extinguishers in good condition?	Yes	No	
First aid kit and eye wash in good condition?	Yes	No	
Biocide pumps operating and in good condition?	Yes	No	
Clean Biocide pumps?	Yes	No	
Number of extra Biocide drums? Redux 620A	5		
Redux 340 pump operating and in good condition?	Yes	No	
Clean Redux 340 pump?	Yes	No	
Number of extra Redux 340 drums?	2		
Redux 390 pumps operating and in good condition?	Yes	No	
Clean Redux 390 pumps?	Yes	No	
Number of extra Redux 390 drums?	3		
Building floor sump pump operational?	Yes	No	
Clean building floor sump?	Yes	No	Cleaned 6/21/2011 Clean Harbors
Influent Tank 300 in good condition and free of leaks?	Yes	No	
Influent Tank 300 sediment?	Yes	No	Cleaned 6/21/2011 Clean Harbors
Change LNAPL boom from inside influent tank?	Yes	No	
OWS in good condition and free of leaks?	Yes	No	
OWS hopper sediment?	Yes	No	Cleaned 6/21/2011 Clean Harbors
OWS media in good condition?	Yes	No	New Media 6/21/2011
Clean OWS media?	Yes	No	Cleaned 6/21/2011 Clean Harbors
Change LNAPL booms from inside OWS?	Yes	No	
Any LNAPL in OWS?	Yes	No	amount?
OWS effluent Tank 500 in good condition and free of leaks?	Yes	No	Cleaned 6/21/2011 Clean Harbors
OWS effluent Tank 500 sediment?	Yes	No	amount?
Change LNAPL boom from inside OWS effluent tank?	Yes	No	
Pump P-501 operating and in good condition?	Yes	No	New unit 1/18/2011
Pump P-502 operating and in good condition?	Yes	No	New Stack Kit 3/8/2011
PRV-500 pressure relief valve operating at 75psi?	Yes	No	
Bag filter unit operating and in good condition?	Yes	No	
Number of extra 10 Micron bags?	96		Order more when level reaches 30
Organo Clay OR-601 operating and in good condition?	Yes	No	parallel new media 3/22/2011
Organo Clay OR-602 operating and in good condition?	Yes	No	parallel new media 3/23/2011
Carbon C-701 operating and in good condition?	Yes	No	parallel new media 3/23/2011
Carbon C-702 operating and in good condition?	Yes	No	parallel new media 3/22/2011
Arion Resin AR-801 operating and in good condition?	Yes	No	parallel new media 3/22/2011
Arion Resin AR-802 operating and in good condition?	Yes	No	parallel new media 3/22/2011
Calibrate PH and temperature meter?	Yes	No	
BW storage water Tank 900 in good condition and free of leaks?	Yes	No	
BW storage water Tank 900 sediment?	Yes	No	
Treated water is clear and free of odor?	Yes	No	
Pump P-901 operating and in good condition?	Yes	No	New unit 1/18/2011
Pump P-902 operating and in good condition?	Yes	No	Rebuilt unit 3/8/2011
GJJWTF meter operating and in good condition?	Yes	No	
BW water Tank 1000 in good condition and free of leaks?	Yes	No	
BW water Tank 1000 sediment?	Yes	No	Cleaned 8/16/2011 Clean Harbors
Pump P-903 operating and in good condition?	Yes	No	
NMH-1 manway cover in good condition?	Yes	No	Cleaned 6/21/2011 Clean Harbors
NMH-1 pump panel operating and in good condition?	Yes	No	
NMH-1 internal piping and electrical in good condition?	Yes	No	
Change LNAPL boom in NMH-1?	Yes	No	
Pump P-101 operating?	Yes	No	New unit 6/21/2011
Pump P-102 operating?	Yes	No	Rebuilt unit 10/18/2011
NMH-6 manway cover in good condition?	Yes	No	Cleaned 8/16/2011 Clean Harbors
NMH-6 pump panel operating and in good condition?	Yes	No	
NMH-6 internal piping and electrical in good condition?	Yes	No	
Change LNAPL boom in NMH-6?	Yes	No	
Pump P-201 operating?	Yes	No	New unit 10/17/2011
Pump P-202 operating?	Yes	No	Rebuilt unit 10/17/2011

Date: 11/23/2011

Time: 9:30

National Grid
Gloversville, New York

Technician: JR

Weather: Rainy 35°

Weekly Groundwater Treatment System OM&M Checklist

Inspection	Completed		Comments
Treatment building in good condition?	Yes	No	
Emergency key in lock box?	Yes	No	
Security lights operating and in good condition?	Yes	No	
Lighting operating and in good condition?	Yes	No	
Ventilation operating and in good condition?	Yes	No	
Heating units operating and in good condition?	Yes	No	
Fire Extinguishers in good condition?	Yes	No	
First aid kit and eye wash in good condition?	Yes	No	
Biocide pumps operating and in good condition?	Yes	No	
Clean Biocide pumps?	Yes	No	
Number of extra Biocide drums? Redux 620A	6		
Redux 340 pump operating and in good condition?	Yes	No	
Clean Redux 340 pump?	Yes	No	
Number of extra Redux 340 drums?	2		
Redux 390 pumps operating and in good condition?	Yes	No	
Clean Redux 390 pumps?	Yes	No	
Number of extra Redux 390 drums?	3		
Building floor sump pump operational?	Yes	No	
Clean building floor sump?	Yes	No	Cleaned 6/21/2011 Clean Harbors
Influent Tank 300 in good condition and free of leaks?	Yes	No	
Influent Tank 300 sediment?	Yes	No	Cleaned 6/21/2011 Clean Harbors
Change LNAPL boom from inside influent tank?	Yes	No	
OWS in good condition and free of leaks?	Yes	No	
OWS hopper sediment?	Yes	No	Cleaned 6/21/2011 Clean Harbors
OWS media in good condition?	Yes	No	New Media 6/21/2011
Clean OWS media?	Yes	No	Cleaned 6/21/2011 Clean Harbors
Change LNAPL booms from inside OWS?	Yes	No	
Any LNAPL in OWS?	Yes	No	amount?
OWS effluent Tank 500 in good condition and free of leaks?	Yes	No	Cleaned 6/21/2011 Clean Harbors
OWS effluent Tank 500 sediment?	Yes	No	amount?
Change LNAPL boom from inside OWS effluent tank?	Yes	No	
Pump P-501 operating and in good condition?	Yes	No	New unit 1/18/2011
Pump P-502 operating and in good condition?	Yes	No	New Stack Kit 3/8/2011
PRV-500 pressure relief valve operating at 75psi?	Yes	No	
Bag filter unit operating and in good condition?	Yes	No	
Number of extra 10 Micron bags?	104		Order more when level reaches 30
Organo Clay OR-601 operating and in good condition?	Yes	No	parallel new media 3/22/2011
Organo Clay OR-602 operating and in good condition?	Yes	No	parallel new media 3/23/2011
Carbon C-701 operating and in good condition?	Yes	No	parallel new media 3/23/2011
Carbon C-702 operating and in good condition?	Yes	No	parallel new media 3/22/2011
Arion Resin AR-801 operating and in good condition?	Yes	No	parallel new media 3/22/2011
Arion Resin AR-802 operating and in good condition?	Yes	No	parallel new media 3/22/2011
Calibrate PH and temperature meter?	Yes	No	
BW storage water Tank 900 in good condition and free of leaks?	Yes	No	
BW storage water Tank 900 sediment?	Yes	No	
Treated water is clear and free of odor?	Yes	No	
Pump P-901 operating and in good condition?	Yes	No	New unit 1/18/2011
Pump P-902 operating and in good condition?	Yes	No	Rebuilt unit 3/8/2011
GJJWTF meter operating and in good condition?	Yes	No	
BW water Tank 1000 in good condition and free of leaks?	Yes	No	
BW water Tank 1000 sediment?	Yes	No	Cleaned 8/16/2011 Clean Harbors
Pump P-903 operating and in good condition?	Yes	No	
NMH-1 manway cover in good condition?	Yes	No	Cleaned 6/21/2011 Clean Harbors
NMH-1 pump panel operating and in good condition?	Yes	No	
NMH-1 internal piping and electrical in good condition?	Yes	No	
Change LNAPL boom in NMH-1?	Yes	No	
Pump P-101 operating?	Yes	No	New unit 6/21/2011
Pump P-102 operating?	Yes	No	Rebuilt unit 10/18/2011
NMH-6 manway cover in good condition?	Yes	No	Cleaned 8/16/2011 Clean Harbors
NMH-6 pump panel operating and in good condition?	Yes	No	
NMH-6 internal piping and electrical in good condition?	Yes	No	
Change LNAPL boom in NMH-6?	Yes	No	
Pump P-201 operating?	Yes	No	New unit 10/17/2011
Pump P-202 operating?	Yes	No	Rebuilt unit 10/17/2011

Date: 11/23/2011

Time: 9:30

Technician: JR

Weather: rainy 35 °F

National Grid
Gloversville, New York
Monthly Groundwater and Stormwater Conveyance System Inspection Checklist

Inspection	Completed		Comments
NMH-2 manway in good condition?	Yes	No	debris? None
NMH-2 LNAPL, DNAPL, Odor or seeps?	Yes	No	
NMH-3 manway in good condition?	Yes	No	debris? None
NMH-3 LNAPL, DNAPL, Odor or seeps?	Yes	No	
NMH-4 manway in good condition?	Yes	No	debris? None
NMH-4 LNAPL, DNAPL, Odor or seeps?	Yes	No	
Change LNAPL boom in NMH-4?	Yes	No	
NMH-5 manway in good condition?	Yes	No	debris? None
NMH-5 LNAPL, DNAPL, Odor or seeps?	Yes	No	
Change LNAPL boom in NMH-5?	Yes	No	
CB-2 catchbasin in good condition?	Yes	No	crack around top grate.
CB-2 LNAPL, DNAPL, Odor or seeps?	Yes	No	
CB-4 catchbasin in good condition?	Yes	No	
CB-4 LNAPL, DNAPL, Odor or seeps?	Yes	No	
CB-5 catchbasin in good condition?	Yes	No	cracked around top
CB-5 LNAPL, DNAPL, Odor or seeps?	Yes	No	
CB-7 catchbasin in good condition?	Yes	No	
CB-7 LNAPL, DNAPL, Odor or seeps?	Yes	No	
CB-8 catchbasin in good condition?	Yes	No	debris? None
CB-8 LNAPL, DNAPL, Odor or seeps?	Yes	No	
Security fence secure to drainage ditch?	Yes	No	
Drainage Ditch Headwall in good condition?	Yes	No	
Standing water in drainage ditch?	Yes	No	
Exposed or damaged GCL in drainage ditch?	Yes	No	locations?
Vegetative growth in drainage ditch?	Yes	No	Vegetation removal
Channeling to drainage ditch?	Yes	No	slight areas
Security fence secure to detention pond?	Yes	No	
Odor or sheen in stormwater?	Yes	No	debris?
HDPE liner and anchors in good condition?	Yes	No	
Concrete pavers in good condition?	Yes	No	
Basin outflow pipe flowing	Yes	No	debris?
Signs of detention pond basin overflowing?	Yes	No	

Date: 11/17/2011

Time: 11:15

National Grid
Gloversville, New York

Technician: JR

Weather: Cloudy°43

Weekly Groundwater Treatment System OM&M Checklist

Inspection	Completed		Comments
Treatment building in good condition?	Yes	No	
Emergency key in lock box?	Yes	No	
Security lights operating and in good condition?	Yes	No	
Lighting operating and in good condition?	Yes	No	
Ventilation operating and in good condition?	Yes	No	
Heating units operating and in good condition?	Yes	No	
Fire Extinguishers in good condition?	Yes	No	
First aid kit and eye wash in good condition?	Yes	No	
Biocide pumps operating and in good condition?	Yes	No	
Clean Biocide pumps?	Yes	No	
Number of extra Biocide drums? Redux 620A	6		
Redux 340 pump operating and in good condition?	Yes	No	
Clean Redux 340 pump?	Yes	No	
Number of extra Redux 340 drums?	2		
Redux 390 pumps operating and in good condition?	Yes	No	
Clean Redux 390 pumps?	Yes	No	
Number of extra Redux 390 drums?	3		
Building floor sump pump operational?	Yes	No	
Clean building floor sump?	Yes	No	Cleaned 6/21/2011 Clean Harbors
Influent Tank 300 in good condition and free of leaks?	Yes	No	
Influent Tank 300 sediment?	Yes	No	Cleaned 6/21/2011 Clean Harbors
Change LNAPL boom from inside influent tank?	Yes	No	
OWS in good condition and free of leaks?	Yes	No	
OWS hopper sediment?	Yes	No	Cleaned 6/21/2011 Clean Harbors
OWS media in good condition?	Yes	No	New Media 6/21/2011
Clean OWS media?	Yes	No	Cleaned 6/21/2011 Clean Harbors
Change LNAPL booms from inside OWS?	Yes	No	
Any LNAPL in OWS?	Yes	No	amount?
OWS effluent Tank 500 in good condition and free of leaks?	Yes	No	Cleaned 6/21/2011 Clean Harbors
OWS effluent Tank 500 sediment?	Yes	No	amount?
Change LNAPL boom from inside OWS effluent tank?	Yes	No	
Pump P-501 operating and in good condition?	Yes	No	New unit 1/18/2011
Pump P-502 operating and in good condition?	Yes	No	New Stack Kit 3/8/2011
PRV-500 pressure relief valve operating at 75psi?	Yes	No	
Bag filter unit operating and in good condition?	Yes	No	
Number of extra 10 Micron bags?	112		Order more when level reaches 30
Organo Clay OR-601 operating and in good condition?	Yes	No	parallel new media 3/22/2011
Organo Clay OR-602 operating and in good condition?	Yes	No	parallel new media 3/23/2011
Carbon C-701 operating and in good condition?	Yes	No	parallel new media 3/23/2011
Carbon C-702 operating and in good condition?	Yes	No	parallel new media 3/22/2011
Arion Resin AR-801 operating and in good condition?	Yes	No	parallel new media 3/22/2011
Arion Resin AR-802 operating and in good condition?	Yes	No	parallel new media 3/22/2011
Calibrate PH and temperature meter?	Yes	No	
BW storage water Tank 900 in good condition and free of leaks?	Yes	No	
BW storage water Tank 900 sediment?	Yes	No	
Treated water is clear and free of odor?	Yes	No	
Pump P-901 operating and in good condition?	Yes	No	New unit 1/18/2011
Pump P-902 operating and in good condition?	Yes	No	Rebuilt unit 3/8/2011
GJJWTF meter operating and in good condition?	Yes	No	
BW water Tank 1000 in good condition and free of leaks?	Yes	No	
BW water Tank 1000 sediment?	Yes	No	Cleaned 8/16/2011 Clean Harbors
Pump P-903 operating and in good condition?	Yes	No	
NMH-1 manway cover in good condition?	Yes	No	Cleaned 6/21/2011 Clean Harbors
NMH-1 pump panel operating and in good condition?	Yes	No	
NMH-1 internal piping and electrical in good condition?	Yes	No	
Change LNAPL boom in NMH-1?	Yes	No	
Pump P-101 operating?	Yes	No	New unit 6/21/2011
Pump P-102 operating?	Yes	No	Rebuilt unit 10/18/2011
NMH-6 manway cover in good condition?	Yes	No	Cleaned 8/16/2011 Clean Harbors
NMH-6 pump panel operating and in good condition?	Yes	No	
NMH-6 internal piping and electrical in good condition?	Yes	No	
Change LNAPL boom in NMH-6?	Yes	No	
Pump P-201 operating?	Yes	No	New unit 10/17/2011
Pump P-202 operating?	Yes	No	Rebuilt unit 10/17/2011

Date: 11/3/2011

Time: 10:00

National Grid
Gloversville, New YorkTechnician: JR
Weather: cloudy 45°**Weekly Groundwater Treatment System OM&M Checklist**

Inspection	Completed		Comments
Treatment building in good condition?	Yes	No	
Emergency key in lock box?	Yes	No	
Security lights operating and in good condition?	Yes	No	
Lighting operating and in good condition?	Yes	No	
Ventilation operating and in good condition?	Yes	No	
Heating units operating and in good condition?	Yes	No	
Fire Extinguishers in good condition?	Yes	No	
First aid kit and eye wash in good condition?	Yes	No	
Biocide pumps operating and in good condition?	Yes	No	
Clean Biocide pumps?	Yes	No	
Number of extra Biocide drums? Redux 620A	1		
Redux 340 pump operating and in good condition?	Yes	No	
Clean Redux 340 pump?	Yes	No	
Number of extra Redux 340 drums?	0		
Redux 390 pumps operating and in good condition?	Yes	No	
Clean Redux 390 pumps?	Yes	No	
Number of extra Redux 390 drums?	0		
Building floor sump pump operational?	Yes	No	
Clean building floor sump?	Yes	No	Cleaned 6/21/2011 Clean Harbors
Influent Tank 300 in good condition and free of leaks?	Yes	No	
Influent Tank 300 sediment?	Yes	No	Cleaned 6/21/2011 Clean Harbors
Change LNAPL boom from inside influent tank?	Yes	No	
OWS in good condition and free of leaks?	Yes	No	
OWS hopper sediment?	Yes	No	Cleaned 6/21/2011 Clean Harbors
OWS media in good condition?	Yes	No	New Media 6/21/2011
Clean OWS media?	Yes	No	Cleaned 6/21/2011 Clean Harbors
Change LNAPL booms from inside OWS?	Yes	No	
Any LNAPL in OWS?	Yes	No	amount?
OWS effluent Tank 500 in good condition and free of leaks?	Yes	No	Cleaned 6/21/2011 Clean Harbors
OWS effluent Tank 500 sediment?	Yes	No	amount?
Change LNAPL boom from inside OWS effluent tank?	Yes	No	
Pump P-501 operating and in good condition?	Yes	No	New unit 1/18/2011
Pump P-502 operating and in good condition?	Yes	No	New Stack Kit 3/8/2011
PRV-500 pressure relief valve operating at 75psi?	Yes	No	
Bag filter unit operating and in good condition?	Yes	No	
Number of extra 10 Micron bags?	131		Order more when level reaches 30
Organo Clay OR-601 operating and in good condition?	Yes	No	parallel new media 3/22/2011
Organo Clay OR-602 operating and in good condition?	Yes	No	parallel new media 3/23/2011
Carbon C-701 operating and in good condition?	Yes	No	parallel new media 3/23/2011
Carbon C-702 operating and in good condition?	Yes	No	parallel new media 3/22/2011
Arion Resin AR-801 operating and in good condition?	Yes	No	parallel new media 3/22/2011
Arion Resin AR-802 operating and in good condition?	Yes	No	parallel new media 3/22/2011
Calibrate PH and temperature meter?	Yes	No	
BW storage water Tank 900 in good condition and free of leaks?	Yes	No	
BW storage water Tank 900 sediment?	Yes	No	
Treated water is clear and free of odor?	Yes	No	
Pump P-901 operating and in good condition?	Yes	No	New unit 1/18/2011
Pump P-902 operating and in good condition?	Yes	No	Rebuilt unit 3/8/2011
GJJWTF meter operating and in good condition?	Yes	No	
BW water Tank 1000 in good condition and free of leaks?	Yes	No	
BW water Tank 1000 sediment?	Yes	No	Cleaned 8/16/2011 Clean Harbors
Pump P-903 operating and in good condition?	Yes	No	
NMH-1 manway cover in good condition?	Yes	No	Cleaned 6/21/2011 Clean Harbors
NMH-1 pump panel operating and in good condition?	Yes	No	
NMH-1 internal piping and electrical in good condition?	Yes	No	
Change LNAPL boom in NMH-1?	Yes	No	
Pump P-101 operating?	Yes	No	New unit 6/21/2011
Pump P-102 operating?	Yes	No	Rebuilt unit 10/18/2011
NMH-6 manway cover in good condition?	Yes	No	Cleaned 8/16/2011 Clean Harbors
NMH-6 pump panel operating and in good condition?	Yes	No	
NMH-6 internal piping and electrical in good condition?	Yes	No	
Change LNAPL boom in NMH-6?	Yes	No	
Pump P-201 operating?	Yes	No	New unit 10/17/2011
Pump P-202 operating?	Yes	No	Rebuilt unit 10/17/2011

Date: 11/3/2011

Time: 10:00

National Grid
Gloversville, New York

Technician: JR

Weather: clear 34°

Weekly Groundwater Treatment System OM&M Checklist

Inspection	Completed		Comments
Treatment building in good condition?	Yes	No	
Emergency key in lock box?	Yes	No	
Security lights operating and in good condition?	Yes	No	
Lighting operating and in good condition?	Yes	No	
Ventilation operating and in good condition?	Yes	No	
Heating units operating and in good condition?	Yes	No	
Fire Extinguishers in good condition?	Yes	No	
First aid kit and eye wash in good condition?	Yes	No	
Biocide pumps operating and in good condition?	Yes	No	
Clean Biocide pumps?	Yes	No	
Number of extra Biocide drums? Redux 620A	1		
Redux 340 pump operating and in good condition?	Yes	No	
Clean Redux 340 pump?	Yes	No	
Number of extra Redux 340 drums?	0		
Redux 390 pumps operating and in good condition?	Yes	No	
Clean Redux 390 pumps?	Yes	No	
Number of extra Redux 390 drums?	0		
Building floor sump pump operational?	Yes	No	
Clean building floor sump?	Yes	No	Cleaned 6/21/2011 Clean Harbors
Influent Tank 300 in good condition and free of leaks?	Yes	No	
Influent Tank 300 sediment?	Yes	No	Cleaned 6/21/2011 Clean Harbors
Change LNAPL boom from inside influent tank?	Yes	No	
OWS in good condition and free of leaks?	Yes	No	
OWS hopper sediment?	Yes	No	Cleaned 6/21/2011 Clean Harbors
OWS media in good condition?	Yes	No	New Media 6/21/2011
Clean OWS media?	Yes	No	Cleaned 6/21/2011 Clean Harbors
Change LNAPL booms from inside OWS?	Yes	No	
Any LNAPL in OWS?	Yes	No	amount?
OWS effluent Tank 500 in good condition and free of leaks?	Yes	No	Cleaned 6/21/2011 Clean Harbors
OWS effluent Tank 500 sediment?	Yes	No	amount?
Change LNAPL boom from inside OWS effluent tank?	Yes	No	
Pump P-501 operating and in good condition?	Yes	No	New unit 1/18/2011
Pump P-502 operating and in good condition?	Yes	No	New Stack Kit 3/8/2011
PRV-500 pressure relief valve operating at 75psi?	Yes	No	
Bag filter unit operating and in good condition?	Yes	No	
Number of extra 10 Micron bags?	139		Order more when level reaches 30
Organo Clay OR-601 operating and in good condition?	Yes	No	parallel new media 3/22/2011
Organo Clay OR-602 operating and in good condition?	Yes	No	parallel new media 3/23/2011
Carbon C-701 operating and in good condition?	Yes	No	parallel new media 3/23/2011
Carbon C-702 operating and in good condition?	Yes	No	parallel new media 3/22/2011
Arion Resin AR-801 operating and in good condition?	Yes	No	parallel new media 3/22/2011
Arion Resin AR-802 operating and in good condition?	Yes	No	parallel new media 3/22/2011
Calibrate PH and temperature meter?	Yes	No	
BW storage water Tank 900 in good condition and free of leaks?	Yes	No	
BW storage water Tank 900 sediment?	Yes	No	
Treated water is clear and free of odor?	Yes	No	
Pump P-901 operating and in good condition?	Yes	No	New unit 1/18/2011
Pump P-902 operating and in good condition?	Yes	No	Rebuilt unit 3/8/2011
GJJWTF meter operating and in good condition?	Yes	No	
BW water Tank 1000 in good condition and free of leaks?	Yes	No	
BW water Tank 1000 sediment?	Yes	No	Cleaned 8/16/2011 Clean Harbors
Pump P-903 operating and in good condition?	Yes	No	
NMH-1 manway cover in good condition?	Yes	No	Cleaned 6/21/2011 Clean Harbors
NMH-1 pump panel operating and in good condition?	Yes	No	
NMH-1 internal piping and electrical in good condition?	Yes	No	
Change LNAPL boom in NMH-1?	Yes	No	
Pump P-101 operating?	Yes	No	New unit 6/21/2011
Pump P-102 operating?	Yes	No	Rebuilt unit 10/18/2011
NMH-6 manway cover in good condition?	Yes	No	Cleaned 8/16/2011 Clean Harbors
NMH-6 pump panel operating and in good condition?	Yes	No	
NMH-6 internal piping and electrical in good condition?	Yes	No	
Change LNAPL boom in NMH-6?	Yes	No	
Pump P-201 operating?	Yes	No	New unit 10/17/2011
Pump P-202 operating?	Yes	No	Rebuilt unit 10/17/2011

Date: 10/28/2011

Time: 10:00

National Grid
Gloversville, New York

Technician: JR

Weather: clear 30°

Weekly Groundwater Treatment System OM&M Checklist

Inspection	Completed		Comments
Treatment building in good condition?	Yes	No	
Emergency key in lock box?	Yes	No	
Security lights operating and in good condition?	Yes	No	
Lighting operating and in good condition?	Yes	No	
Ventilation operating and in good condition?	Yes	No	
Heating units operating and in good condition?	Yes	No	
Fire Extinguishers in good condition?	Yes	No	
First aid kit and eye wash in good condition?	Yes	No	
Biocide pumps operating and in good condition?	Yes	No	
Clean Biocide pumps?	Yes	No	
Number of extra Biocide drums? Redux 620A	1		
Redux 340 pump operating and in good condition?	Yes	No	
Clean Redux 340 pump?	Yes	No	
Number of extra Redux 340 drums?	0		
Redux 390 pumps operating and in good condition?	Yes	No	
Clean Redux 390 pumps?	Yes	No	
Number of extra Redux 390 drums?	0		
Building floor sump pump operational?	Yes	No	
Clean building floor sump?	Yes	No	Cleaned 6/21/2011 Clean Harbors
Influent Tank 300 in good condition and free of leaks?	Yes	No	
Influent Tank 300 sediment?	Yes	No	Cleaned 6/21/2011 Clean Harbors
Change LNAPL boom from inside influent tank?	Yes	No	
OWS in good condition and free of leaks?	Yes	No	
OWS hopper sediment?	Yes	No	Cleaned 6/21/2011 Clean Harbors
OWS media in good condition?	Yes	No	New Media 6/21/2011
Clean OWS media?	Yes	No	Cleaned 6/21/2011 Clean Harbors
Change LNAPL booms from inside OWS?	Yes	No	
Any LNAPL in OWS?	Yes	No	amount?
OWS effluent Tank 500 in good condition and free of leaks?	Yes	No	Cleaned 6/21/2011 Clean Harbors
OWS effluent Tank 500 sediment?	Yes	No	amount?
Change LNAPL boom from inside OWS effluent tank?	Yes	No	
Pump P-501 operating and in good condition?	Yes	No	New unit 1/18/2011
Pump P-502 operating and in good condition?	Yes	No	New Stack Kit 3/8/2011
PRV-500 pressure relief valve operating at 75psi?	Yes	No	
Bag filter unit operating and in good condition?	Yes	No	
Number of extra 10 Micron bags?	147		Order more when level reaches 30
Organo Clay OR-601 operating and in good condition?	Yes	No	parallel new media 3/22/2011
Organo Clay OR-602 operating and in good condition?	Yes	No	parallel new media 3/23/2011
Carbon C-701 operating and in good condition?	Yes	No	parallel new media 3/23/2011
Carbon C-702 operating and in good condition?	Yes	No	parallel new media 3/22/2011
Arion Resin AR-801 operating and in good condition?	Yes	No	parallel new media 3/22/2011
Arion Resin AR-802 operating and in good condition?	Yes	No	parallel new media 3/22/2011
Calibrate PH and temperature meter?	Yes	No	
BW storage water Tank 900 in good condition and free of leaks?	Yes	No	
BW storage water Tank 900 sediment?	Yes	No	
Treated water is clear and free of odor?	Yes	No	
Pump P-901 operating and in good condition?	Yes	No	New unit 1/18/2011
Pump P-902 operating and in good condition?	Yes	No	Rebuilt unit 3/8/2011
GJJWTF meter operating and in good condition?	Yes	No	
BW water Tank 1000 in good condition and free of leaks?	Yes	No	
BW water Tank 1000 sediment?	Yes	No	Cleaned 8/16/2011 Clean Harbors
Pump P-903 operating and in good condition?	Yes	No	
NMH-1 manway cover in good condition?	Yes	No	Cleaned 6/21/2011 Clean Harbors
NMH-1 pump panel operating and in good condition?	Yes	No	
NMH-1 internal piping and electrical in good condition?	Yes	No	
Change LNAPL boom in NMH-1?	Yes	No	
Pump P-101 operating?	Yes	No	New unit 6/21/2011
Pump P-102 operating?	Yes	No	Rebuilt unit 10/18/2011
NMH-6 manway cover in good condition?	Yes	No	Cleaned 8/16/2011 Clean Harbors
NMH-6 pump panel operating and in good condition?	Yes	No	
NMH-6 internal piping and electrical in good condition?	Yes	No	
Change LNAPL boom in NMH-6?	Yes	No	
Pump P-201 operating?	Yes	No	New unit 10/17/2011
Pump P-202 operating?	Yes	No	Rebuilt unit 10/17/2011

Date: 10/28/2011

Time: 10:00

Technician: JR

Weather: Clear 30 °F

National Grid
Gloversville, New York
Monthly Groundwater and Stormwater Conveyance System Inspection Checklist

Inspection	Completed		Comments
NMH-2 manway in good condition?	Yes	No	debris? None
NMH-2 LNAPL, DNAPL, Odor or seeps?	Yes	No	
NMH-3 manway in good condition?	Yes	No	debris? None
NMH-3 LNAPL, DNAPL, Odor or seeps?	Yes	No	
NMH-4 manway in good condition?	Yes	No	debris? None
NMH-4 LNAPL, DNAPL, Odor or seeps?	Yes	No	
Change LNAPL boom in NMH-4?	Yes	No	
NMH-5 manway in good condition?	Yes	No	debris? None
NMH-5 LNAPL, DNAPL, Odor or seeps?	Yes	No	
Change LNAPL boom in NMH-5?	Yes	No	
CB-2 catchbasin in good condition?	Yes	No	crack around top grate.
CB-2 LNAPL, DNAPL, Odor or seeps?	Yes	No	
CB-4 catchbasin in good condition?	Yes	No	
CB-4 LNAPL, DNAPL, Odor or seeps?	Yes	No	
CB-5 catchbasin in good condition?	Yes	No	cracked around top
CB-5 LNAPL, DNAPL, Odor or seeps?	Yes	No	
CB-7 catchbasin in good condition?	Yes	No	
CB-7 LNAPL, DNAPL, Odor or seeps?	Yes	No	
CB-8 catchbasin in good condition?	Yes	No	debris? None
CB-8 LNAPL, DNAPL, Odor or seeps?	Yes	No	
Security fence secure to drainage ditch?	Yes	No	
Drainage Ditch Headwall in good condition?	Yes	No	
Standing water in drainage ditch?	Yes	No	
Exposed or damaged GCL in drainage ditch?	Yes	No	locations?
Vegetative growth in drainage ditch?	Yes	No	Vegetation removal
Channeling to drainage ditch?	Yes	No	slight areas
Security fence secure to detention pond?	Yes	No	
Odor or sheen in stormwater?	Yes	No	debris?
HDPE liner and anchors in good condition?	Yes	No	
Concrete pavers in good condition?	Yes	No	
Basin outflow pipe flowing	Yes	No	debris?
Signs of detention pond basin overflowing?	Yes	No	

Date: 10/14/2011

Time: 1 1:45

National Grid
Gloversville, New York

Technician: JR

Weather: Cloudy 66

Weekly Groundwater Treatment System OM&M Checklist

Inspection	Completed		Comments
Treatment building in good condition?	Yes	No	
Emergency key in lock box?	Yes	No	
Security lights operating and in good condition?	Yes	No	
Lighting operating and in good condition?	Yes	No	
Ventilation operating and in good condition?	Yes	No	
Heating units operating and in good condition?	Yes	No	
Fire Extinguishers in good condition?	Yes	No	
First aid kit and eye wash in good condition?	Yes	No	
Biocide pumps operating and in good condition?	Yes	No	
Clean Biocide pumps?	Yes	No	
Number of extra Biocide drums? Redux 620A	2		
Redux 340 pump operating and in good condition?	Yes	No	
Clean Redux 340 pump?	Yes	No	
Number of extra Redux 340 drums?	0		
Redux 390 pumps operating and in good condition?	Yes	No	
Clean Redux 390 pumps?	Yes	No	
Number of extra Redux 390 drums?	1		
Building floor sump pump operational?	Yes	No	
Clean building floor sump?	Yes	No	Cleaned 6/21/2011 Clean Harbors
Influent Tank 300 in good condition and free of leaks?	Yes	No	
Influent Tank 300 sediment?	Yes	No	Cleaned 6/21/2011 Clean Harbors
Change LNAPL boom from inside influent tank?	Yes	No	
OWS in good condition and free of leaks?	Yes	No	
OWS hopper sediment?	Yes	No	Cleaned 6/21/2011 Clean Harbors
OWS media in good condition?	Yes	No	New Media 6/21/2011
Clean OWS media?	Yes	No	Cleaned 6/21/2011 Clean Harbors
Change LNAPL booms from inside OWS?	Yes	No	
Any LNAPL in OWS?	Yes	No	amount?
OWS effluent Tank 500 in good condition and free of leaks?	Yes	No	Cleaned 6/21/2011 Clean Harbors
OWS effluent Tank 500 sediment?	Yes	No	amount?
Change LNAPL boom from inside OWS effluent tank?	Yes	No	
Pump P-501 operating and in good condition?	Yes	No	New unit 1/18/2011
Pump P-502 operating and in good condition?	Yes	No	New Stack Kit 3/8/2011
PRV-500 pressure relief valve operating at 75psi?	Yes	No	
Bag filter unit operating and in good condition?	Yes	No	
Number of extra 10 Micron bags?	69		Order more when level reaches 30
Organo Clay OR-601 operating and in good condition?	Yes	No	parallel new media 3/22/2011
Organo Clay OR-602 operating and in good condition?	Yes	No	parallel new media 3/23/2011
Carbon C-701 operating and in good condition?	Yes	No	parallel new media 3/23/2011
Carbon C-702 operating and in good condition?	Yes	No	parallel new media 3/22/2011
Arion Resin AR-801 operating and in good condition?	Yes	No	parallel new media 3/22/2011
Arion Resin AR-802 operating and in good condition?	Yes	No	parallel new media 3/22/2011
Calibrate PH and temperature meter?	Yes	No	
BW storage water Tank 900 in good condition and free of leaks?	Yes	No	
BW storage water Tank 900 sediment?	Yes	No	
Treated water is clear and free of odor?	Yes	No	
Pump P-901 operating and in good condition?	Yes	No	New unit 1/18/2011
Pump P-902 operating and in good condition?	Yes	No	Rebuilt unit 3/8/2011
GJJWTF meter operating and in good condition?	Yes	No	
BW water Tank 1000 in good condition and free of leaks?	Yes	No	
BW water Tank 1000 sediment?	Yes	No	Cleaned 8/16/2011 Clean Harbors
Pump P-903 operating and in good condition?	Yes	No	
NMH-1 manway cover in good condition?	Yes	No	Cleaned 6/21/2011 Clean Harbors
NMH-1 pump panel operating and in good condition?	Yes	No	
NMH-1 internal piping and electrical in good condition?	Yes	No	
Change LNAPL boom in NMH-1?	Yes	No	
Pump P-101 operating?	Yes	No	New unit 6/21/2011
Pump P-102 operating?	Yes	No	Rebuilt unit 6/21/2011
NMH-6 manway cover in good condition?	Yes	No	Cleaned 8/16/2011 Clean Harbors
NMH-6 pump panel operating and in good condition?	Yes	No	
NMH-6 internal piping and electrical in good condition?	Yes	No	
Change LNAPL boom in NMH-6?	Yes	No	
Pump P-201 operating?	Yes	No	New unit 4/20/2010
Pump P-202 operating?	yes	No	Rebuilt unit 4/20/2010

Date: 9/30/2011

Time: 1:40

National Grid
Gloversville, New York

Technician: JR

Weather: Sunny 72

Weekly Groundwater Treatment System OM&M Checklist

Inspection	Completed		Comments
Treatment building in good condition?	Yes	No	
Emergency key in lock box?	Yes	No	
Security lights operating and in good condition?	Yes	No	
Lighting operating and in good condition?	Yes	No	
Ventilation operating and in good condition?	Yes	No	
Heating units operating and in good condition?	Yes	No	
Fire Extinguishers in good condition?	Yes	No	
First aid kit and eye wash in good condition?	Yes	No	
Biocide pumps operating and in good condition?	Yes	No	
Clean Biocide pumps?	Yes	No	
Number of extra Biocide drums? Redux 620A	3		
Redux 340 pump operating and in good condition?	Yes	No	
Clean Redux 340 pump?	Yes	No	
Number of extra Redux 340 drums?	0		
Redux 390 pumps operating and in good condition?	Yes	No	
Clean Redux 390 pumps?	Yes	No	
Number of extra Redux 390 drums?	1		
Building floor sump pump operational?	Yes	No	
Clean building floor sump?	Yes	No	Cleaned 6/21/2011 Clean Harbors
Influent Tank 300 in good condition and free of leaks?	Yes	No	
Influent Tank 300 sediment?	Yes	No	Cleaned 6/21/2011 Clean Harbors
Change LNAPL boom from inside influent tank?	Yes	No	
OWS in good condition and free of leaks?	Yes	No	
OWS hopper sediment?	Yes	No	Cleaned 6/21/2011 Clean Harbors
OWS media in good condition?	Yes	No	New Media 6/21/2011
Clean OWS media?	Yes	No	Cleaned 6/21/2011 Clean Harbors
Change LNAPL booms from inside OWS?	Yes	No	
Any LNAPL in OWS?	Yes	No	amount?
OWS effluent Tank 500 in good condition and free of leaks?	Yes	No	Cleaned 6/21/2011 Clean Harbors
OWS effluent Tank 500 sediment?	Yes	No	amount?
Change LNAPL boom from inside OWS effluent tank?	Yes	No	
Pump P-501 operating and in good condition?	Yes	No	New unit 1/18/2011
Pump P-502 operating and in good condition?	Yes	No	New Stack Kit 3/8/2011
PRV-500 pressure relief valve operating at 75psi?	Yes	No	
Bag filter unit operating and in good condition?	Yes	No	
Number of extra 10 Micron bags?	86		Order more when level reaches 30
Organo Clay OR-601 operating and in good condition?	Yes	No	parallel new media 3/22/2011
Organo Clay OR-602 operating and in good condition?	Yes	No	parallel new media 3/23/2011
Carbon C-701 operating and in good condition?	Yes	No	parallel new media 3/23/2011
Carbon C-702 operating and in good condition?	Yes	No	parallel new media 3/22/2011
Arion Resin AR-801 operating and in good condition?	Yes	No	parallel new media 3/22/2011
Arion Resin AR-802 operating and in good condition?	Yes	No	parallel new media 3/22/2011
Calibrate PH and temperature meter?	Yes	No	
BW storage water Tank 900 in good condition and free of leaks?	Yes	No	
BW storage water Tank 900 sediment?	Yes	No	
Treated water is clear and free of odor?	Yes	No	
Pump P-901 operating and in good condition?	Yes	No	New unit 1/18/2011
Pump P-902 operating and in good condition?	Yes	No	Rebuilt unit 3/8/2011
GJJWTF meter operating and in good condition?	Yes	No	
BW water Tank 1000 in good condition and free of leaks?	Yes	No	
BW water Tank 1000 sediment?	Yes	No	Cleaned 8/16/2011 Clean Harbors
Pump P-903 operating and in good condition?	Yes	No	
NMH-1 manway cover in good condition?	Yes	No	Cleaned 6/21/2011 Clean Harbors
NMH-1 pump panel operating and in good condition?	Yes	No	
NMH-1 internal piping and electrical in good condition?	Yes	No	
Change LNAPL boom in NMH-1?	Yes	No	
Pump P-101 operating?	Yes	No	New unit 6/21/2011
Pump P-102 operating?	Yes	No	Rebuilt unit 6/21/2011
NMH-6 manway cover in good condition?	Yes	No	Cleaned 8/16/2011 Clean Harbors
NMH-6 pump panel operating and in good condition?	Yes	No	
NMH-6 internal piping and electrical in good condition?	Yes	No	
Change LNAPL boom in NMH-6?	Yes	No	
Pump P-201 operating?	Yes	No	New unit 4/20/2010
Pump P-202 operating?	yes	No	Rebuilt unit 4/20/2010

Date: 9/22/2011

Time: 11:30

National Grid
Gloversville, New York

Technician: JR

Weather: Overcast 65

Weekly Groundwater Treatment System OM&M Checklist

Inspection	Completed		Comments
Treatment building in good condition?	Yes	No	
Emergency key in lock box?	Yes	No	
Security lights operating and in good condition?	Yes	No	
Lighting operating and in good condition?	Yes	No	
Ventilation operating and in good condition?	Yes	No	
Heating units operating and in good condition?	Yes	No	Turned off
Fire Extinguishers in good condition?	Yes	No	
First aid kit and eye wash in good condition?	Yes	No	
Biocide pumps operating and in good condition?	Yes	No	
Clean Biocide pumps?	Yes	No	
Number of extra Biocide drums? Redux 620A	3		
Redux 340 pump operating and in good condition?	Yes	No	
Clean Redux 340 pump?	Yes	No	
Number of extra Redux 340 drums?	0		
Redux 390 pumps operating and in good condition?	Yes	No	
Clean Redux 390 pumps?	Yes	No	
Number of extra Redux 390 drums?	2		
Building floor sump pump operational?	Yes	No	
Clean building floor sump?	Yes	No	Cleaned 6/21/2011 Clean Harbors
Influent Tank 300 in good condition and free of leaks?	Yes	No	
Influent Tank 300 sediment?	Yes	No	Cleaned 6/21/2011 Clean Harbors
Change LNAPL boom from inside influent tank?	Yes	No	
OWS in good condition and free of leaks?	Yes	No	
OWS hopper sediment?	Yes	No	Cleaned 6/21/2011 Clean Harbors
OWS media in good condition?	Yes	No	New Media 6/21/2011
Clean OWS media?	Yes	No	Cleaned 6/21/2011 Clean Harbors
Change LNAPL booms from inside OWS?	Yes	No	
Any LNAPL in OWS?	Yes	No	amount?
OWS effluent Tank 500 in good condition and free of leaks?	Yes	No	Cleaned 6/21/2011 Clean Harbors
OWS effluent Tank 500 sediment?	Yes	No	amount?
Change LNAPL boom from inside OWS effluent tank?	Yes	No	
Pump P-501 operating and in good condition?	Yes	No	New unit 1/18/2011
Pump P-502 operating and in good condition?	Yes	No	New Stack Kit 3/8/2011
PRV-500 pressure relief valve operating at 75psi?	Yes	No	
Bag filter unit operating and in good condition?	Yes	No	
Number of extra 10 Micron bags?	97		Order more when level reaches 30
Organo Clay OR-601 operating and in good condition?	Yes	No	parallel new media 3/22/2011
Organo Clay OR-602 operating and in good condition?	Yes	No	parallel new media 3/23/2011
Carbon C-701 operating and in good condition?	Yes	No	parallel new media 3/23/2011
Carbon C-702 operating and in good condition?	Yes	No	parallel new media 3/22/2011
Arion Resin AR-801 operating and in good condition?	Yes	No	parallel new media 3/22/2011
Arion Resin AR-802 operating and in good condition?	Yes	No	parallel new media 3/22/2011
Calibrate PH and temperature meter?	Yes	No	
BW storage water Tank 900 in good condition and free of leaks?	Yes	No	
BW storage water Tank 900 sediment?	Yes	No	
Treated water is clear and free of odor?	Yes	No	
Pump P-901 operating and in good condition?	Yes	No	New unit 1/18/2011
Pump P-902 operating and in good condition?	Yes	No	Rebuilt unit 3/8/2011
GJJWTF meter operating and in good condition?	Yes	No	
BW water Tank 1000 in good condition and free of leaks?	Yes	No	
BW water Tank 1000 sediment?	Yes	No	Cleaned 8/16/2011 Clean Harbors
Pump P-903 operating and in good condition?	Yes	No	
NMH-1 manway cover in good condition?	Yes	No	Cleaned 6/21/2011 Clean Harbors
NMH-1 pump panel operating and in good condition?	Yes	No	
NMH-1 internal piping and electrical in good condition?	Yes	No	
Change LNAPL boom in NMH-1?	Yes	No	
Pump P-101 operating?	Yes	No	New unit 6/21/2011
Pump P-102 operating?	Yes	No	Rebuilt unit 6/21/2011
NMH-6 manway cover in good condition?	Yes	No	Cleaned 8/16/2011 Clean Harbors
NMH-6 pump panel operating and in good condition?	Yes	No	
NMH-6 internal piping and electrical in good condition?	Yes	No	
Change LNAPL boom in NMH-6?	Yes	No	
Pump P-201 operating?	Yes	No	New unit 4/20/2010
Pump P-202 operating?	yes	No	Rebuilt unit 4/20/2010

Date: 9/09/2011

Time: 9:30

National Grid
Gloversville, New York

Technician: JR

Weather: foggy 65

Weekly Groundwater Treatment System OM&M Checklist

Inspection	Completed		Comments
Treatment building in good condition?	Yes	No	
Emergency key in lock box?	Yes	No	
Security lights operating and in good condition?	Yes	No	
Lighting operating and in good condition?	Yes	No	
Ventilation operating and in good condition?	Yes	No	
Heating units operating and in good condition?	Yes	No	Turned off
Fire Extinguishers in good condition?	Yes	No	
First aid kit and eye wash in good condition?	Yes	No	
Biocide pumps operating and in good condition?	Yes	No	
Clean Biocide pumps?	Yes	No	
Number of extra Biocide drums? Redux 620A	4		
Redux 340 pump operating and in good condition?	Yes	No	
Clean Redux 340 pump?	Yes	No	
Number of extra Redux 340 drums?	1		
Redux 390 pumps operating and in good condition?	Yes	No	
Clean Redux 390 pumps?	Yes	No	
Number of extra Redux 390 drums?	2		
Building floor sump pump operational?	Yes	No	
Clean building floor sump?	Yes	No	Cleaned 6/21/2011 Clean Harbors
Influent Tank 300 in good condition and free of leaks?	Yes	No	
Influent Tank 300 sediment?	Yes	No	Cleaned 6/21/2011 Clean Harbors
Change LNAPL boom from inside influent tank?	Yes	No	
OWS in good condition and free of leaks?	Yes	No	
OWS hopper sediment?	Yes	No	Cleaned 6/21/2011 Clean Harbors
OWS media in good condition?	Yes	No	New Media 6/21/2011
Clean OWS media?	Yes	No	Cleaned 6/21/2011 Clean Harbors
Change LNAPL booms from inside OWS?	Yes	No	
Any LNAPL in OWS?	Yes	No	amount?
OWS effluent Tank 500 in good condition and free of leaks?	Yes	No	Cleaned 6/21/2011 Clean Harbors
OWS effluent Tank 500 sediment?	Yes	No	amount?
Change LNAPL boom from inside OWS effluent tank?	Yes	No	
Pump P-501 operating and in good condition?	Yes	No	New unit 1/18/2011
Pump P-502 operating and in good condition?	Yes	No	New Stack Kit 3/8/2011
PRV-500 pressure relief valve operating at 75psi?	Yes	No	
Bag filter unit operating and in good condition?	Yes	No	
Number of extra 10 Micron bags?	23		Order more when level reaches 30
Organo Clay OR-601 operating and in good condition?	Yes	No	parallel new media 3/22/2011
Organo Clay OR-602 operating and in good condition?	Yes	No	parallel new media 3/23/2011
Carbon C-701 operating and in good condition?	Yes	No	parallel new media 3/23/2011
Carbon C-702 operating and in good condition?	Yes	No	parallel new media 3/22/2011
Arion Resin AR-801 operating and in good condition?	Yes	No	parallel new media 3/22/2011
Arion Resin AR-802 operating and in good condition?	Yes	No	parallel new media 3/22/2011
Calibrate PH and temperature meter?	Yes	No	
BW storage water Tank 900 in good condition and free of leaks?	Yes	No	
BW storage water Tank 900 sediment?	Yes	No	
Treated water is clear and free of odor?	Yes	No	
Pump P-901 operating and in good condition?	Yes	No	New unit 1/18/2011
Pump P-902 operating and in good condition?	Yes	No	Rebuilt unit 3/8/2011
GJJWTF meter operating and in good condition?	Yes	No	
BW water Tank 1000 in good condition and free of leaks?	Yes	No	
BW water Tank 1000 sediment?	Yes	No	Cleaned 8/16/2011 Clean Harbors
Pump P-903 operating and in good condition?	Yes	No	
NMH-1 manway cover in good condition?	Yes	No	Cleaned 6/21/2011 Clean Harbors
NMH-1 pump panel operating and in good condition?	Yes	No	
NMH-1 internal piping and electrical in good condition?	Yes	No	
Change LNAPL boom in NMH-1?	Yes	No	
Pump P-101 operating?	Yes	No	New unit 6/21/2011
Pump P-102 operating?	Yes	No	Rebuilt unit 6/21/2011
NMH-6 manway cover in good condition?	Yes	No	Cleaned 8/16/2011 Clean Harbors
NMH-6 pump panel operating and in good condition?	Yes	No	
NMH-6 internal piping and electrical in good condition?	Yes	No	
Change LNAPL boom in NMH-6?	Yes	No	
Pump P-201 operating?	Yes	No	New unit 4/20/2010
Pump P-202 operating?	yes	No	Rebuilt unit 4/20/2010

Date: 9/9/2011

Time: 10:00

Technician: JR

Weather: foggy 64° F

National Grid
Gloversville, New York
Monthly Groundwater and Stormwater Conveyance System Inspection Checklist

Inspection	Completed		Comments
NMH-2 manway in good condition?	Yes	No	debris? None
NMH-2 LNAPL, DNAPL, Odor or seeps?	Yes	No	
NMH-3 manway in good condition?	Yes	No	debris? None
NMH-3 LNAPL, DNAPL, Odor or seeps?	Yes	No	
NMH-4 manway in good condition?	Yes	No	debris? None
NMH-4 LNAPL, DNAPL, Odor or seeps?	Yes	No	
Change LNAPL boom in NMH-4?	Yes	No	
NMH-5 manway in good condition?	Yes	No	debris? None
NMH-5 LNAPL, DNAPL, Odor or seeps?	Yes	No	
Change LNAPL boom in NMH-5?	Yes	No	
CB-2 catchbasin in good condition?	Yes	No	crack around top grate.
CB-2 LNAPL, DNAPL, Odor or seeps?	Yes	No	
CB-4 catchbasin in good condition?	Yes	No	
CB-4 LNAPL, DNAPL, Odor or seeps?	Yes	No	
CB-5 catchbasin in good condition?	Yes	No	cracked around top
CB-5 LNAPL, DNAPL, Odor or seeps?	Yes	No	
CB-7 catchbasin in good condition?	Yes	No	
CB-7 LNAPL, DNAPL, Odor or seeps?	Yes	No	
CB-8 catchbasin in good condition?	Yes	No	debris? None
CB-8 LNAPL, DNAPL, Odor or seeps?	Yes	No	
Security fence secure to drainage ditch?	Yes	No	
Drainage Ditch Headwall in good condition?	Yes	No	
Standing water in drainage ditch?	Yes	No	
Exposed or damaged GCL in drainage ditch?	Yes	No	locations?
Vegetative growth in drainage ditch?	Yes	No	Vegetation removal
Channeling to drainage ditch?	Yes	No	slight areas
Security fence secure to detention pond?	Yes	No	
Odor or sheen in stormwater?	Yes	No	debris?
HDPE liner and anchors in good condition?	Yes	No	
Concrete pavers in good condition?	Yes	No	
Basin outflow pipe flowing	Yes	No	debris?
Signs of detention pond basin overflowing?	Yes	No	

Date: 8/31/2011

Time: 8:00

National Grid
Gloversville, New York

Technician: TB

Weather: Partly Sunny 58 °F

Weekly Groundwater Treatment System OM&M Checklist

Inspection	Completed		Comments
Treatment building in good condition?	Yes	No	
Emergency key in lock box?	Yes	No	
Security lights operating and in good condition?	Yes	No	
Lighting operating and in good condition?	Yes	No	
Ventilation operating and in good condition?	Yes	No	
Heating units operating and in good condition?	Yes	No	Turned off
Fire Extinguishers in good condition?	Yes	No	
First aid kit and eye wash in good condition?	Yes	No	
Biocide pumps operating and in good condition?	Yes	No	
Clean Biocide pumps?	Yes	No	
Number of extra Biocide drums? Redux 620A	5		
Redux 340 pump operating and in good condition?	Yes	No	
Clean Redux 340 pump?	Yes	No	
Number of extra Redux 340 drums?	1		
Redux 390 pumps operating and in good condition?	Yes	No	
Clean Redux 390 pumps?	Yes	No	
Number of extra Redux 390 drums?	3		
Building floor sump pump operational?	Yes	No	
Clean building floor sump?	Yes	No	Cleaned 6/21/2011 Clean Harbors
Influent Tank 300 in good condition and free of leaks?	Yes	No	
Influent Tank 300 sediment?	Yes	No	Cleaned 6/21/2011 Clean Harbors
Change LNAPL boom from inside influent tank?	Yes	No	
OWS in good condition and free of leaks?	Yes	No	
OWS hopper sediment?	Yes	No	Cleaned 6/21/2011 Clean Harbors
OWS media in good condition?	Yes	No	New Media 6/21/2011
Clean OWS media?	Yes	No	Cleaned 6/21/2011 Clean Harbors
Change LNAPL booms from inside OWS?	Yes	No	
Any LNAPL in OWS?	Yes	No	amount?
OWS effluent Tank 500 in good condition and free of leaks?	Yes	No	Cleaned 6/21/2011 Clean Harbors
OWS effluent Tank 500 sediment?	Yes	No	amount?
Change LNAPL boom from inside OWS effluent tank?	Yes	No	
Pump P-501 operating and in good condition?	Yes	No	New unit 1/18/2011
Pump P-502 operating and in good condition?	Yes	No	New Stack Kit 3/8/2011
PRV-500 pressure relief valve operating at 75psi?	Yes	No	
Bag filter unit operating and in good condition?	Yes	No	
Number of extra 10 Micron bags?	40		Order more when level reaches 30
Organo Clay OR-601 operating and in good condition?	Yes	No	parallel new media 3/22/2011
Organo Clay OR-602 operating and in good condition?	Yes	No	parallel new media 3/23/2011
Carbon C-701 operating and in good condition?	Yes	No	parallel new media 3/23/2011
Carbon C-702 operating and in good condition?	Yes	No	parallel new media 3/22/2011
Arion Resin AR-801 operating and in good condition?	Yes	No	parallel new media 3/22/2011
Arion Resin AR-802 operating and in good condition?	Yes	No	parallel new media 3/22/2011
Calibrate PH and temperature meter?	Yes	No	
BW storage water Tank 900 in good condition and free of leaks?	Yes	No	
BW storage water Tank 900 sediment?	Yes	No	
Treated water is clear and free of odor?	Yes	No	
Pump P-901 operating and in good condition?	Yes	No	New unit 1/18/2011
Pump P-902 operating and in good condition?	Yes	No	Rebuilt unit 3/8/2011
GJJWTF meter operating and in good condition?	Yes	No	
BW water Tank 1000 in good condition and free of leaks?	Yes	No	
BW water Tank 1000 sediment?	Yes	No	Cleaned 8/16/2011 Clean Harbors
Pump P-903 operating and in good condition?	Yes	No	
NMH-1 manway cover in good condition?	Yes	No	Cleaned 6/21/2011 Clean Harbors
NMH-1 pump panel operating and in good condition?	Yes	No	
NMH-1 internal piping and electrical in good condition?	Yes	No	
Change LNAPL boom in NMH-1?	Yes	No	
Pump P-101 operating?	Yes	No	New unit 6/21/2011
Pump P-102 operating?	Yes	No	Rebuilt unit 6/21/2011
NMH-6 manway cover in good condition?	Yes	No	Cleaned 8/16/2011 Clean Harbors
NMH-6 pump panel operating and in good condition?	Yes	No	
NMH-6 internal piping and electrical in good condition?	Yes	No	
Change LNAPL boom in NMH-6?	Yes	No	
Pump P-201 operating?	Yes	No	New unit 4/20/2010
Pump P-202 operating?	yes	No	Rebuilt unit 4/20/2010

Date: 8/22/2011

Time: 12:00

National Grid
Gloversville, New York

Technician: JR

Weather: Sunny 74 °F

Weekly Groundwater Treatment System OM&M Checklist

Inspection	Completed		Comments
Treatment building in good condition?	Yes	No	
Emergency key in lock box?	Yes	No	
Security lights operating and in good condition?	Yes	No	
Lighting operating and in good condition?	Yes	No	
Ventilation operating and in good condition?	Yes	No	
Heating units operating and in good condition?	Yes	No	Turned off
Fire Extinguishers in good condition?	Yes	No	
First aid kit and eye wash in good condition?	Yes	No	
Biocide pumps operating and in good condition?	Yes	No	
Clean Biocide pumps?	Yes	No	
Number of extra Biocide drums? Redux 620A	5		Started Redux 620A today
Redux 340 pump operating and in good condition?	Yes	No	
Clean Redux 340 pump?	Yes	No	
Number of extra Redux 340 drums?	1		
Redux 390 pumps operating and in good condition?	Yes	No	
Clean Redux 390 pumps?	Yes	No	
Number of extra Redux 390 drums?	3		
Building floor sump pump operational?	Yes	No	
Clean building floor sump?	Yes	No	Cleaned 6/21/2011 Clean Harbors
Influent Tank 300 in good condition and free of leaks?	Yes	No	
Influent Tank 300 sediment?	Yes	No	Cleaned 6/21/2011 Clean Harbors
Change LNAPL boom from inside influent tank?	Yes	No	
OWS in good condition and free of leaks?	Yes	No	
OWS hopper sediment?	Yes	No	Cleaned 6/21/2011 Clean Harbors
OWS media in good condition?	Yes	No	New Media 6/21/2011
Clean OWS media?	Yes	No	Cleaned 6/21/2011 Clean Harbors
Change LNAPL booms from inside OWS?	Yes	No	
Any LNAPL in OWS?	Yes	No	amount?
OWS effluent Tank 500 in good condition and free of leaks?	Yes	No	Cleaned 6/21/2011 Clean Harbors
OWS effluent Tank 500 sediment?	Yes	No	amount?
Change LNAPL boom from inside OWS effluent tank?	Yes	No	
Pump P-501 operating and in good condition?	Yes	No	New unit 1/18/2011
Pump P-502 operating and in good condition?	Yes	No	New Stack Kit 3/8/2011
PRV-500 pressure relief valve operating at 75psi?	Yes	No	
Bag filter unit operating and in good condition?	Yes	No	
Number of extra 10 Micron bags?	57		Order more when level reaches 30
Organo Clay OR-601 operating and in good condition?	Yes	No	parallel new media 3/22/2011
Organo Clay OR-602 operating and in good condition?	Yes	No	parallel new media 3/23/2011
Carbon C-701 operating and in good condition?	Yes	No	parallel new media 3/23/2011
Carbon C-702 operating and in good condition?	Yes	No	parallel new media 3/22/2011
Arion Resin AR-801 operating and in good condition?	Yes	No	parallel new media 3/22/2011
Arion Resin AR-802 operating and in good condition?	Yes	No	parallel new media 3/22/2011
Calibrate PH and temperature meter?	Yes	No	
BW storage water Tank 900 in good condition and free of leaks?	Yes	No	
BW storage water Tank 900 sediment?	Yes	No	
Treated water is clear and free of odor?	Yes	No	
Pump P-901 operating and in good condition?	Yes	No	New unit 1/18/2011
Pump P-902 operating and in good condition?	Yes	No	Rebuilt unit 3/8/2011
GJJWTF meter operating and in good condition?	Yes	No	
BW water Tank 1000 in good condition and free of leaks?	Yes	No	
BW water Tank 1000 sediment?	Yes	No	Cleaned 8/16/2011 Clean Harbors
Pump P-903 operating and in good condition?	Yes	No	
NMH-1 manway cover in good condition?	Yes	No	Cleaned 6/21/2011 Clean Harbors
NMH-1 pump panel operating and in good condition?	Yes	No	
NMH-1 internal piping and electrical in good condition?	Yes	No	
Change LNAPL boom in NMH-1?	Yes	No	
Pump P-101 operating?	Yes	No	New unit 6/21/2011
Pump P-102 operating?	Yes	No	Rebuilt unit 6/21/2011
NMH-6 manway cover in good condition?	Yes	No	Cleaned 8/16/2011 Clean Harbors
NMH-6 pump panel operating and in good condition?	Yes	No	
NMH-6 internal piping and electrical in good condition?	Yes	No	
Change LNAPL boom in NMH-6?	Yes	No	
Pump P-201 operating?	Yes	No	New unit 4/20/2010
Pump P-202 operating?	yes	No	Rebuilt unit 4/20/2010

Date: 8/22/2011

Time: 12:00

Technician: TB

Weather: Sunny 74°F

National Grid
Gloversville, New York
Monthly Groundwater and Stormwater Conveyance System Inspection Checklist

Inspection	Completed		Comments
NMH-2 manway in good condition?	Yes	No	debris? None
NMH-2 LNAPL, DNAPL, Odor or seeps?	Yes	No	
NMH-3 manway in good condition?	Yes	No	debris? None
NMH-3 LNAPL, DNAPL, Odor or seeps?	Yes	No	
NMH-4 manway in good condition?	Yes	No	debris? None
NMH-4 LNAPL, DNAPL, Odor or seeps?	Yes	No	
Change LNAPL boom in NMH-4?	Yes	No	
NMH-5 manway in good condition?	Yes	No	debris? None
NMH-5 LNAPL, DNAPL, Odor or seeps?	Yes	No	
Change LNAPL boom in NMH-5?	Yes	No	
CB-2 catchbasin in good condition?	Yes	No	crack around top grate.
CB-2 LNAPL, DNAPL, Odor or seeps?	Yes	No	
CB-4 catchbasin in good condition?	Yes	No	
CB-4 LNAPL, DNAPL, Odor or seeps?	Yes	No	
CB-5 catchbasin in good condition?	Yes	No	Grouttech repaired on 12/2/2010
CB-5 LNAPL, DNAPL, Odor or seeps?	Yes	No	
CB-7 catchbasin in good condition?	Yes	No	
CB-7 LNAPL, DNAPL, Odor or seeps?	Yes	No	
CB-8 catchbasin in good condition?	Yes	No	debris? None
CB-8 LNAPL, DNAPL, Odor or seeps?	Yes	No	
Security fence secure to drainage ditch?	Yes	No	
Drainage Ditch Headwall in good condition?	Yes	No	
Standing water in drainage ditch?	Yes	No	
Exposed or damaged GCL in drainage ditch?	Yes	No	locations?
Vegetative growth in drainage ditch?	Yes	No	Vegetation removal
Channeling to drainage ditch?	Yes	No	slight areas
Security fence secure to detention pond?	Yes	No	
Odor or sheen in stormwater?	Yes	No	debris?
HDPE liner and anchors in good condition?	Yes	No	
Concrete pavers in good condition?	Yes	No	
Basin outflow pipe flowing	Yes	No	debris?
Signs of detention pond basin overflowing?	Yes	No	

Date: 8/19/2011

Time: 10:20

National Grid
Gloversville, New York

Technician: JR

Weather: Clear 80 °F

Weekly Groundwater Treatment System OM&M Checklist

Inspection	Completed		Comments
Treatment building in good condition?	Yes	No	
Emergency key in lock box?	Yes	No	
Security lights operating and in good condition?	Yes	No	
Lighting operating and in good condition?	Yes	No	
Ventilation operating and in good condition?	Yes	No	
Heating units operating and in good condition?	Yes	No	Turned off
Fire Extinguishers in good condition?	Yes	No	
First aid kit and eye wash in good condition?	Yes	No	
Biocide pumps operating and in good condition?	Yes	No	
Clean Biocide pumps?	Yes	No	
Number of extra Biocide drums? Tolcide PS20A	0		
Redux 340 pump operating and in good condition?	Yes	No	
Clean Redux 340 pump?	Yes	No	
Number of extra Redux 340 drums?	1		
Redux 390 pumps operating and in good condition?	Yes	No	
Clean Redux 390 pumps?	Yes	No	
Number of extra Redux 390 drums?	1		
Building floor sump pump operational?	Yes	No	
Clean building floor sump?	Yes	No	Cleaned 6/21/2011 Clean Harbors
Influent Tank 300 in good condition and free of leaks?	Yes	No	
Influent Tank 300 sediment?	Yes	No	Cleaned 6/21/2011 Clean Harbors
Change LNAPL boom from inside influent tank?	Yes	No	
OWS in good condition and free of leaks?	Yes	No	
OWS hopper sediment?	Yes	No	Cleaned 6/21/2011 Clean Harbors
OWS media in good condition?	Yes	No	New Media 6/21/2011
Clean OWS media?	Yes	No	Cleaned 6/21/2011 Clean Harbors
Change LNAPL booms from inside OWS?	Yes	No	
Any LNAPL in OWS?	Yes	No	amount?
OWS effluent Tank 500 in good condition and free of leaks?	Yes	No	Cleaned 6/21/2011 Clean Harbors
OWS effluent Tank 500 sediment?	Yes	No	amount?
Change LNAPL boom from inside OWS effluent tank?	Yes	No	
Pump P-501 operating and in good condition?	Yes	No	New unit 1/18/2011
Pump P-502 operating and in good condition?	Yes	No	New Stack Kit 3/8/2011
PRV-500 pressure relief valve operating at 75psi?	Yes	No	
Bag filter unit operating and in good condition?	Yes	No	
Number of extra 10 Micron bags?	57		Order more when level reaches 30
Organo Clay OR-601 operating and in good condition?	Yes	No	parallel new media 3/22/2011
Organo Clay OR-602 operating and in good condition?	Yes	No	parallel new media 3/23/2011
Carbon C-701 operating and in good condition?	Yes	No	parallel new media 3/23/2011
Carbon C-702 operating and in good condition?	Yes	No	parallel new media 3/22/2011
Arion Resin AR-801 operating and in good condition?	Yes	No	parallel new media 3/22/2011
Arion Resin AR-802 operating and in good condition?	Yes	No	parallel new media 3/22/2011
Calibrate PH and temperature meter?	Yes	No	
BW storage water Tank 900 in good condition and free of leaks?	Yes	No	
BW storage water Tank 900 sediment?	Yes	No	
Treated water is clear and free of odor?	Yes	No	
Pump P-901 operating and in good condition?	Yes	No	New unit 1/18/2011
Pump P-902 operating and in good condition?	Yes	No	Rebuilt unit 3/8/2011
GJJWTF meter operating and in good condition?	Yes	No	
BW water Tank 1000 in good condition and free of leaks?	Yes	No	
BW water Tank 1000 sediment?	Yes	No	Cleaned 8/16/2011 Clean Harbors
Pump P-903 operating and in good condition?	Yes	No	
NMH-1 manway cover in good condition?	Yes	No	Cleaned 6/21/2011 Clean Harbors
NMH-1 pump panel operating and in good condition?	Yes	No	
NMH-1 internal piping and electrical in good condition?	Yes	No	
Change LNAPL boom in NMH-1?	Yes	No	
Pump P-101 operating?	Yes	No	New unit 6/21/2011
Pump P-102 operating?	Yes	No	Rebuilt unit 6/21/2011
NMH-6 manway cover in good condition?	Yes	No	Cleaned 8/16/2011 Clean Harbors
NMH-6 pump panel operating and in good condition?	Yes	No	
NMH-6 internal piping and electrical in good condition?	Yes	No	
Change LNAPL boom in NMH-6?	Yes	No	
Pump P-201 operating?	Yes	No	New unit 4/20/2010
Pump P-202 operating?	yes	No	Rebuilt unit 4/20/2010

Date: 8/12/2011

Time: 10:45

National Grid
Gloversville, New York

Technician: JR

Weather: Clear 80 °F

Weekly Groundwater Treatment System OM&M Checklist

Inspection	Completed		Comments
Treatment building in good condition?	Yes	No	
Emergency key in lock box?	Yes	No	
Security lights operating and in good condition?	Yes	No	
Lighting operating and in good condition?	Yes	No	
Ventilation operating and in good condition?	Yes	No	
Heating units operating and in good condition?	Yes	No	Turned off
Fire Extinguishers in good condition?	Yes	No	
First aid kit and eye wash in good condition?	Yes	No	
Biocide pumps operating and in good condition?	Yes	No	
Clean Biocide pumps?	Yes	No	
Number of extra Biocide drums? Tolcide PS20A	0		
Redux 340 pump operating and in good condition?	Yes	No	
Clean Redux 340 pump?	Yes	No	
Number of extra Redux 340 drums?	1		
Redux 390 pumps operating and in good condition?	Yes	No	
Clean Redux 390 pumps?	Yes	No	
Number of extra Redux 390 drums?	2		
Building floor sump pump operational?	Yes	No	
Clean building floor sump?	Yes	No	Cleaned 6/21/2011 Clean Harbors
Influent Tank 300 in good condition and free of leaks?	Yes	No	
Influent Tank 300 sediment?	Yes	No	Cleaned 6/21/2011 Clean Harbors
Change LNAPL boom from inside influent tank?	Yes	No	
OWS in good condition and free of leaks?	Yes	No	
OWS hopper sediment?	Yes	No	Cleaned 6/21/2011 Clean Harbors
OWS media in good condition?	Yes	No	New Media 6/21/2011
Clean OWS media?	Yes	No	Cleaned 6/21/2011 Clean Harbors
Change LNAPL booms from inside OWS?	Yes	No	
Any LNAPL in OWS?	Yes	No	amount?
OWS effluent Tank 500 in good condition and free of leaks?	Yes	No	Cleaned 6/21/2011 Clean Harbors
OWS effluent Tank 500 sediment?	Yes	No	amount?
Change LNAPL boom from inside OWS effluent tank?	Yes	No	
Pump P-501 operating and in good condition?	Yes	No	New unit 1/18/2011
Pump P-502 operating and in good condition?	Yes	No	New Stack Kit 3/8/2011
PRV-500 pressure relief valve operating at 75psi?	Yes	No	
Bag filter unit operating and in good condition?	Yes	No	
Number of extra 10 Micron bags?	66		Order more when level reaches 30
Organo Clay OR-601 operating and in good condition?	Yes	No	parallel new media 3/22/2011
Organo Clay OR-602 operating and in good condition?	Yes	No	parallel new media 3/23/2011
Carbon C-701 operating and in good condition?	Yes	No	parallel new media 3/23/2011
Carbon C-702 operating and in good condition?	Yes	No	parallel new media 3/22/2011
Arion Resin AR-801 operating and in good condition?	Yes	No	parallel new media 3/22/2011
Arion Resin AR-802 operating and in good condition?	Yes	No	parallel new media 3/22/2011
Calibrate PH and temperature meter?	Yes	No	
BW storage water Tank 900 in good condition and free of leaks?	Yes	No	
BW storage water Tank 900 sediment?	Yes	No	
Treated water is clear and free of odor?	Yes	No	
Pump P-901 operating and in good condition?	Yes	No	New unit 1/18/2011
Pump P-902 operating and in good condition?	Yes	No	Rebuilt unit 3/8/2011
GJJWTF meter operating and in good condition?	Yes	No	
BW water Tank 1000 in good condition and free of leaks?	Yes	No	
BW water Tank 1000 sediment?	Yes	No	placed water from cleaning into tank 6/21/2011
Pump P-903 operating and in good condition?	Yes	No	
NMH-1 manway cover in good condition?	Yes	No	Cleaned 6/21/2011 Clean Harbors
NMH-1 pump panel operating and in good condition?	Yes	No	
NMH-1 internal piping and electrical in good condition?	Yes	No	
Change LNAPL boom in NMH-1?	Yes	No	
Pump P-101 operating?	Yes	No	New unit 6/21/2011
Pump P-102 operating?	Yes	No	Rebuilt unit 6/21/2011
NMH-6 manway cover in good condition?	Yes	No	
NMH-6 pump panel operating and in good condition?	Yes	No	
NMH-6 internal piping and electrical in good condition?	Yes	No	
Change LNAPL boom in NMH-6?	Yes	No	NAPL installed boom
Pump P-201 operating?	Yes	No	New unit 4/20/2010
Pump P-202 operating?	yes	No	Rebuilt unit 4/20/2010

Date: 8/05/2011

Time: 11:00

National Grid
Gloversville, New York

Technician: JR

Weather: Clear 80 °F

Weekly Groundwater Treatment System OM&M Checklist

Inspection	Completed		Comments
Treatment building in good condition?	Yes	No	
Emergency key in lock box?	Yes	No	
Security lights operating and in good condition?	Yes	No	
Lighting operating and in good condition?	Yes	No	
Ventilation operating and in good condition?	Yes	No	
Heating units operating and in good condition?	Yes	No	Turned off
Fire Extinguishers in good condition?	Yes	No	
First aid kit and eye wash in good condition?	Yes	No	
Biocide pumps operating and in good condition?	Yes	No	
Clean Biocide pumps?	Yes	No	
Number of extra Biocide drums? Tolcide PS20A	0		
Redux 340 pump operating and in good condition?	Yes	No	
Clean Redux 340 pump?	Yes	No	
Number of extra Redux 340 drums?	1		
Redux 390 pumps operating and in good condition?	Yes	No	
Clean Redux 390 pumps?	Yes	No	
Number of extra Redux 390 drums?	2		
Building floor sump pump operational?	Yes	No	
Clean building floor sump?	Yes	No	Cleaned 6/21/2011 Clean Harbors
Influent Tank 300 in good condition and free of leaks?	Yes	No	
Influent Tank 300 sediment?	Yes	No	Cleaned 6/21/2011 Clean Harbors
Change LNAPL boom from inside influent tank?	Yes	No	
OWS in good condition and free of leaks?	Yes	No	
OWS hopper sediment?	Yes	No	Cleaned 6/21/2011 Clean Harbors
OWS media in good condition?	Yes	No	New Media 6/21/2011
Clean OWS media?	Yes	No	Cleaned 6/21/2011 Clean Harbors
Change LNAPL booms from inside OWS?	Yes	No	
Any LNAPL in OWS?	Yes	No	amount?
OWS effluent Tank 500 in good condition and free of leaks?	Yes	No	Cleaned 6/21/2011 Clean Harbors
OWS effluent Tank 500 sediment?	Yes	No	amount?
Change LNAPL boom from inside OWS effluent tank?	Yes	No	
Pump P-501 operating and in good condition?	Yes	No	New unit 1/18/2011
Pump P-502 operating and in good condition?	Yes	No	New Stack Kit 3/8/2011
PRV-500 pressure relief valve operating at 75psi?	Yes	No	
Bag filter unit operating and in good condition?	Yes	No	
Number of extra 10 Micron bags?	75		Order more when level reaches 30
Organo Clay OR-601 operating and in good condition?	Yes	No	parallel new media 3/22/2011
Organo Clay OR-602 operating and in good condition?	Yes	No	parallel new media 3/23/2011
Carbon C-701 operating and in good condition?	Yes	No	parallel new media 3/23/2011
Carbon C-702 operating and in good condition?	Yes	No	parallel new media 3/22/2011
Arion Resin AR-801 operating and in good condition?	Yes	No	parallel new media 3/22/2011
Arion Resin AR-802 operating and in good condition?	Yes	No	parallel new media 3/22/2011
Calibrate PH and temperature meter?	Yes	No	
BW storage water Tank 900 in good condition and free of leaks?	Yes	No	
BW storage water Tank 900 sediment?	Yes	No	
Treated water is clear and free of odor?	Yes	No	
Pump P-901 operating and in good condition?	Yes	No	New unit 1/18/2011
Pump P-902 operating and in good condition?	Yes	No	Rebuilt unit 3/8/2011
GJJWTF meter operating and in good condition?	Yes	No	
BW water Tank 1000 in good condition and free of leaks?	Yes	No	
BW water Tank 1000 sediment?	Yes	No	placed water from cleaning into tank 6/21/2011
Pump P-903 operating and in good condition?	Yes	No	
NMH-1 manway cover in good condition?	Yes	No	Cleaned 6/21/2011 Clean Harbors
NMH-1 pump panel operating and in good condition?	Yes	No	
NMH-1 internal piping and electrical in good condition?	Yes	No	
Change LNAPL boom in NMH-1?	Yes	No	
Pump P-101 operating?	Yes	No	New unit 6/21/2011
Pump P-102 operating?	Yes	No	Rebuilt unit 6/21/2011
NMH-6 manway cover in good condition?	Yes	No	
NMH-6 pump panel operating and in good condition?	Yes	No	
NMH-6 internal piping and electrical in good condition?	Yes	No	
Change LNAPL boom in NMH-6?	Yes	No	NAPL installed boom
Pump P-201 operating?	Yes	No	New unit 4/20/2010
Pump P-202 operating?	yes	No	Rebuilt unit 4/20/2010

Date: 7/26/2011

Time: 10:10

National Grid
Gloversville, New York

Technician: JR

Weather: Clear 80 °F

Weekly Groundwater Treatment System OM&M Checklist

Inspection	Completed		Comments
Treatment building in good condition?	Yes	No	
Emergency key in lock box?	Yes	No	
Security lights operating and in good condition?	Yes	No	
Lighting operating and in good condition?	Yes	No	
Ventilation operating and in good condition?	Yes	No	
Heating units operating and in good condition?	Yes	No	Turned off
Fire Extinguishers in good condition?	Yes	No	
First aid kit and eye wash in good condition?	Yes	No	
Biocide pumps operating and in good condition?	Yes	No	
Clean Biocide pumps?	Yes	No	
Number of extra Biocide drums? Tolcide PS20A	1		
Redux 340 pump operating and in good condition?	Yes	No	
Clean Redux 340 pump?	Yes	No	
Number of extra Redux 340 drums?	1		
Redux 390 pumps operating and in good condition?	Yes	No	
Clean Redux 390 pumps?	Yes	No	
Number of extra Redux 390 drums?	2		
Building floor sump pump operational?	Yes	No	
Clean building floor sump?	Yes	No	Cleaned 6/21/2011 Clean Harbors
Influent Tank 300 in good condition and free of leaks?	Yes	No	
Influent Tank 300 sediment?	Yes	No	Cleaned 6/21/2011 Clean Harbors
Change LNAPL boom from inside influent tank?	Yes	No	
OWS in good condition and free of leaks?	Yes	No	
OWS hopper sediment?	Yes	No	Cleaned 6/21/2011 Clean Harbors
OWS media in good condition?	Yes	No	New Media 6/21/2011
Clean OWS media?	Yes	No	Cleaned 6/21/2011 Clean Harbors
Change LNAPL booms from inside OWS?	Yes	No	
Any LNAPL in OWS?	Yes	No	amount?
OWS effluent Tank 500 in good condition and free of leaks?	Yes	No	Cleaned 6/21/2011 Clean Harbors
OWS effluent Tank 500 sediment?	Yes	No	amount?
Change LNAPL boom from inside OWS effluent tank?	Yes	No	
Pump P-501 operating and in good condition?	Yes	No	New unit 1/18/2011
Pump P-502 operating and in good condition?	Yes	No	New Stack Kit 3/8/2011
PRV-500 pressure relief valve operating at 75psi?	Yes	No	
Bag filter unit operating and in good condition?	Yes	No	
Number of extra 10 Micron bags?	100		Order more when level reaches 30
Organo Clay OR-601 operating and in good condition?	Yes	No	parallel new media 3/22/2011
Organo Clay OR-602 operating and in good condition?	Yes	No	parallel new media 3/23/2011
Carbon C-701 operating and in good condition?	Yes	No	parallel new media 3/23/2011
Carbon C-702 operating and in good condition?	Yes	No	parallel new media 3/22/2011
Arion Resin AR-801 operating and in good condition?	Yes	No	parallel new media 3/22/2011
Arion Resin AR-802 operating and in good condition?	Yes	No	parallel new media 3/22/2011
Calibrate PH and temperature meter?	Yes	No	
BW storage water Tank 900 in good condition and free of leaks?	Yes	No	
BW storage water Tank 900 sediment?	Yes	No	
Treated water is clear and free of odor?	Yes	No	
Pump P-901 operating and in good condition?	Yes	No	New unit 1/18/2011
Pump P-902 operating and in good condition?	Yes	No	Rebuilt unit 3/8/2011
GJJWTF meter operating and in good condition?	Yes	No	
BW water Tank 1000 in good condition and free of leaks?	Yes	No	
BW water Tank 1000 sediment?	Yes	No	placed water from cleaning into tank 6/21/2011
Pump P-903 operating and in good condition?	Yes	No	
NMH-1 manway cover in good condition?	Yes	No	Cleaned 6/21/2011 Clean Harbors
NMH-1 pump panel operating and in good condition?	Yes	No	
NMH-1 internal piping and electrical in good condition?	Yes	No	
Change LNAPL boom in NMH-1?	Yes	No	
Pump P-101 operating?	Yes	No	New unit 6/21/2011
Pump P-102 operating?	Yes	No	Rebuilt unit 6/21/2011
NMH-6 manway cover in good condition?	Yes	No	
NMH-6 pump panel operating and in good condition?	Yes	No	
NMH-6 internal piping and electrical in good condition?	Yes	No	
Change LNAPL boom in NMH-6?	Yes	No	NAPL installed boom
Pump P-201 operating?	Yes	No	New unit 4/20/2010
Pump P-202 operating?	yes	No	Rebuilt unit 4/20/2010

Date: 7/26/2011

Time: 10:10

Technician: JR

Weather: Clear 80°F

National Grid
Gloversville, New York
Monthly Groundwater and Stormwater Conveyance System Inspection Checklist

Inspection	Completed		Comments
NMH-2 manway in good condition?	Yes	No	debris? None
NMH-2 LNAPL, DNAPL, Odor or seeps?	Yes	No	
NMH-3 manway in good condition?	Yes	No	debris? None
NMH-3 LNAPL, DNAPL, Odor or seeps?	Yes	No	
NMH-4 manway in good condition?	Yes	No	debris? None
NMH-4 LNAPL, DNAPL, Odor or seeps?	Yes	No	
Change LNAPL boom in NMH-4?	Yes	No	
NMH-5 manway in good condition?	Yes	No	debris? None
NMH-5 LNAPL, DNAPL, Odor or seeps?	Yes	No	
Change LNAPL boom in NMH-5?	Yes	No	
CB-2 catchbasin in good condition?	Yes	No	crack around top grate.
CB-2 LNAPL, DNAPL, Odor or seeps?	Yes	No	
CB-4 catchbasin in good condition?	Yes	No	
CB-4 LNAPL, DNAPL, Odor or seeps?	Yes	No	
CB-5 catchbasin in good condition?	Yes	No	Grouttech repaired on 12/2/2010
CB-5 LNAPL, DNAPL, Odor or seeps?	Yes	No	
CB-7 catchbasin in good condition?	Yes	No	
CB-7 LNAPL, DNAPL, Odor or seeps?	Yes	No	
CB-8 catchbasin in good condition?	Yes	No	debris? None
CB-8 LNAPL, DNAPL, Odor or seeps?	Yes	No	
Security fence secure to drainage ditch?	Yes	No	
Drainage Ditch Headwall in good condition?	Yes	No	
Standing water in drainage ditch?	Yes	No	
Exposed or damaged GCL in drainage ditch?	Yes	No	locations?
Vegetative growth in drainage ditch?	Yes	No	Vegetation removal
Channeling to drainage ditch?	Yes	No	slight areas
Security fence secure to detention pond?	Yes	No	
Odor or sheen in stormwater?	Yes	No	debris?
HDPE liner and anchors in good condition?	Yes	No	
Concrete pavers in good condition?	Yes	No	
Basin outflow pipe flowing	Yes	No	debris?
Signs of detention pond basin overflowing?	Yes	No	

Date: 7/22/2011

Time: 10:00

National Grid
Gloversville, New York

Technician: JR

Weather: Clear 89 °F

Weekly Groundwater Treatment System OM&M Checklist

Inspection	Completed		Comments
Treatment building in good condition?	Yes	No	
Emergency key in lock box?	Yes	No	
Security lights operating and in good condition?	Yes	No	
Lighting operating and in good condition?	Yes	No	
Ventilation operating and in good condition?	Yes	No	
Heating units operating and in good condition?	Yes	No	Turned off
Fire Extinguishers in good condition?	Yes	No	
First aid kit and eye wash in good condition?	Yes	No	
Biocide pumps operating and in good condition?	Yes	No	
Clean Biocide pumps?	Yes	No	
Number of extra Biocide drums? Tolcide PS20A	2		
Redux 340 pump operating and in good condition?	Yes	No	
Clean Redux 340 pump?	Yes	No	
Number of extra Redux 340 drums?	1		
Redux 390 pumps operating and in good condition?	Yes	No	
Clean Redux 390 pumps?	Yes	No	
Number of extra Redux 390 drums?	2		
Building floor sump pump operational?	Yes	No	
Clean building floor sump?	Yes	No	Cleaned 6/21/2011 Clean Harbors
Influent Tank 300 in good condition and free of leaks?	Yes	No	
Influent Tank 300 sediment?	Yes	No	Cleaned 6/21/2011 Clean Harbors
Change LNAPL boom from inside influent tank?	Yes	No	
OWS in good condition and free of leaks?	Yes	No	
OWS hopper sediment?	Yes	No	Cleaned 6/21/2011 Clean Harbors
OWS media in good condition?	Yes	No	New Media 6/21/2011
Clean OWS media?	Yes	No	Cleaned 6/21/2011 Clean Harbors
Change LNAPL booms from inside OWS?	Yes	No	
Any LNAPL in OWS?	Yes	No	amount?
OWS effluent Tank 500 in good condition and free of leaks?	Yes	No	Cleaned 6/21/2011 Clean Harbors
OWS effluent Tank 500 sediment?	Yes	No	amount?
Change LNAPL boom from inside OWS effluent tank?	Yes	No	
Pump P-501 operating and in good condition?	Yes	No	New unit 1/18/2011
Pump P-502 operating and in good condition?	Yes	No	New Stack Kit 3/8/2011
PRV-500 pressure relief valve operating at 75psi?	Yes	No	
Bag filter unit operating and in good condition?	Yes	No	
Number of extra 10 Micron bags?	109		Order more when level reaches 30
Organo Clay OR-601 operating and in good condition?	Yes	No	parallel new media 3/22/2011
Organo Clay OR-602 operating and in good condition?	Yes	No	parallel new media 3/23/2011
Carbon C-701 operating and in good condition?	Yes	No	parallel new media 3/23/2011
Carbon C-702 operating and in good condition?	Yes	No	parallel new media 3/22/2011
Arion Resin AR-801 operating and in good condition?	Yes	No	parallel new media 3/22/2011
Arion Resin AR-802 operating and in good condition?	Yes	No	parallel new media 3/22/2011
Calibrate PH and temperature meter?	Yes	No	
BW storage water Tank 900 in good condition and free of leaks?	Yes	No	
BW storage water Tank 900 sediment?	Yes	No	
Treated water is clear and free of odor?	Yes	No	
Pump P-901 operating and in good condition?	Yes	No	New unit 1/18/2011
Pump P-902 operating and in good condition?	Yes	No	Rebuilt unit 3/8/2011
GJJWTF meter operating and in good condition?	Yes	No	
BW water Tank 1000 in good condition and free of leaks?	Yes	No	
BW water Tank 1000 sediment?	Yes	No	placed water from cleaning into tank 6/21/2011
Pump P-903 operating and in good condition?	Yes	No	
NMH-1 manway cover in good condition?	Yes	No	Cleaned 6/21/2011 Clean Harbors
NMH-1 pump panel operating and in good condition?	Yes	No	
NMH-1 internal piping and electrical in good condition?	Yes	No	
Change LNAPL boom in NMH-1?	Yes	No	
Pump P-101 operating?	Yes	No	New unit 6/21/2011
Pump P-102 operating?	Yes	No	Rebuilt unit 6/21/2011
NMH-6 manway cover in good condition?	Yes	No	
NMH-6 pump panel operating and in good condition?	Yes	No	
NMH-6 internal piping and electrical in good condition?	Yes	No	
Change LNAPL boom in NMH-6?	Yes	No	NAPL installed boom
Pump P-201 operating?	Yes	No	New unit 4/20/2010
Pump P-202 operating?	yes	No	Rebuilt unit 4/20/2010

Date: 7/15/2011

Time: 11:00

National Grid
Gloversville, New York

Technician: JR

Weather: Clear 82 °F

Weekly Groundwater Treatment System OM&M Checklist

Inspection	Completed		Comments
Treatment building in good condition?	Yes	No	
Emergency key in lock box?	Yes	No	
Security lights operating and in good condition?	Yes	No	
Lighting operating and in good condition?	Yes	No	
Ventilation operating and in good condition?	Yes	No	
Heating units operating and in good condition?	Yes	No	Turned off
Fire Extinguishers in good condition?	Yes	No	
First aid kit and eye wash in good condition?	Yes	No	
Biocide pumps operating and in good condition?	Yes	No	
Clean Biocide pumps?	Yes	No	
Number of extra Biocide drums? Tolcide PS20A	2		
Redux 340 pump operating and in good condition?	Yes	No	
Clean Redux 340 pump?	Yes	No	
Number of extra Redux 340 drums?	1		
Redux 390 pumps operating and in good condition?	Yes	No	
Clean Redux 390 pumps?	Yes	No	
Number of extra Redux 390 drums?	3		
Building floor sump pump operational?	Yes	No	
Clean building floor sump?	Yes	No	Cleaned 6/21/2011 Clean Harbors
Influent Tank 300 in good condition and free of leaks?	Yes	No	
Influent Tank 300 sediment?	Yes	No	Cleaned 6/21/2011 Clean Harbors
Change LNAPL boom from inside influent tank?	Yes	No	
OWS in good condition and free of leaks?	Yes	No	
OWS hopper sediment?	Yes	No	Cleaned 6/21/2011 Clean Harbors
OWS media in good condition?	Yes	No	New Media 6/21/2011
Clean OWS media?	Yes	No	Cleaned 6/21/2011 Clean Harbors
Change LNAPL booms from inside OWS?	Yes	No	
Any LNAPL in OWS?	Yes	No	amount?
OWS effluent Tank 500 in good condition and free of leaks?	Yes	No	Cleaned 6/21/2011 Clean Harbors
OWS effluent Tank 500 sediment?	Yes	No	amount?
Change LNAPL boom from inside OWS effluent tank?	Yes	No	
Pump P-501 operating and in good condition?	Yes	No	New unit 1/18/2011
Pump P-502 operating and in good condition?	Yes	No	New Stack Kit 3/8/2011
PRV-500 pressure relief valve operating at 75psi?	Yes	No	
Bag filter unit operating and in good condition?	Yes	No	
Number of extra 10 Micron bags?	96		Order more when level reaches 30
Organo Clay OR-601 operating and in good condition?	Yes	No	parallel new media 3/22/2011
Organo Clay OR-602 operating and in good condition?	Yes	No	parallel new media 3/23/2011
Carbon C-701 operating and in good condition?	Yes	No	parallel new media 3/23/2011
Carbon C-702 operating and in good condition?	Yes	No	parallel new media 3/22/2011
Arion Resin AR-801 operating and in good condition?	Yes	No	parallel new media 3/22/2011
Arion Resin AR-802 operating and in good condition?	Yes	No	parallel new media 3/22/2011
Calibrate PH and temperature meter?	Yes	No	
BW storage water Tank 900 in good condition and free of leaks?	Yes	No	
BW storage water Tank 900 sediment?	Yes	No	
Treated water is clear and free of odor?	Yes	No	
Pump P-901 operating and in good condition?	Yes	No	New unit 1/18/2011
Pump P-902 operating and in good condition?	Yes	No	Rebuilt unit 3/8/2011
GJJWTF meter operating and in good condition?	Yes	No	
BW water Tank 1000 in good condition and free of leaks?	Yes	No	
BW water Tank 1000 sediment?	Yes	No	placed water from cleaning into tank 6/21/2011
Pump P-903 operating and in good condition?	Yes	No	
NMH-1 manway cover in good condition?	Yes	No	Cleaned 6/21/2011 Clean Harbors
NMH-1 pump panel operating and in good condition?	Yes	No	
NMH-1 internal piping and electrical in good condition?	Yes	No	
Change LNAPL boom in NMH-1?	Yes	No	
Pump P-101 operating?	Yes	No	New unit 6/21/2011
Pump P-102 operating?	Yes	No	Rebuilt unit 6/21/2011
NMH-6 manway cover in good condition?	Yes	No	
NMH-6 pump panel operating and in good condition?	Yes	No	
NMH-6 internal piping and electrical in good condition?	Yes	No	clean hrbs replaced leaking pipe on 7/12/11
Change LNAPL boom in NMH-6?	Yes	No	NAPL installed boom
Pump P-201 operating?	Yes	No	New unit 4/20/2010
Pump P-202 operating?	yes	No	Rebuilt unit 4/20/2010

Date: 7/08/2011

Time: 9:30

National Grid
Gloversville, New York

Technician: JR

Weather: Clear 70 °F

Weekly Groundwater Treatment System OM&M Checklist

Inspection	Completed		Comments
Treatment building in good condition?	Yes	No	
Emergency key in lock box?	Yes	No	
Security lights operating and in good condition?	Yes	No	
Lighting operating and in good condition?	Yes	No	
Ventilation operating and in good condition?	Yes	No	
Heating units operating and in good condition?	Yes	No	Turned off
Fire Extinguishers in good condition?	Yes	No	
First aid kit and eye wash in good condition?	Yes	No	
Biocide pumps operating and in good condition?	Yes	No	
Clean Biocide pumps?	Yes	No	
Number of extra Biocide drums? Tolcide PS20A	3		
Redux 340 pump operating and in good condition?	Yes	No	
Clean Redux 340 pump?	Yes	No	
Number of extra Redux 340 drums?	1		
Redux 390 pumps operating and in good condition?	Yes	No	
Clean Redux 390 pumps?	Yes	No	
Number of extra Redux 390 drums?	3		
Building floor sump pump operational?	Yes	No	
Clean building floor sump?	Yes	No	Cleaned 6/21/2011 Clean Harbors
Influent Tank 300 in good condition and free of leaks?	Yes	No	
Influent Tank 300 sediment?	Yes	No	Cleaned 6/21/2011 Clean Harbors
Change LNAPL boom from inside influent tank?	Yes	No	
OWS in good condition and free of leaks?	Yes	No	
OWS hopper sediment?	Yes	No	Cleaned 6/21/2011 Clean Harbors
OWS media in good condition?	Yes	No	New Media 6/21/2011
Clean OWS media?	Yes	No	Cleaned 6/21/2011 Clean Harbors
Change LNAPL booms from inside OWS?	Yes	No	
Any LNAPL in OWS?	Yes	No	amount?
OWS effluent Tank 500 in good condition and free of leaks?	Yes	No	Cleaned 6/21/2011 Clean Harbors
OWS effluent Tank 500 sediment?	Yes	No	amount?
Change LNAPL boom from inside OWS effluent tank?	Yes	No	
Pump P-501 operating and in good condition?	Yes	No	New unit 1/18/2011
Pump P-502 operating and in good condition?	Yes	No	New Stack Kit 3/8/2011
PRV-500 pressure relief valve operating at 75psi?	Yes	No	
Bag filter unit operating and in good condition?	Yes	No	
Number of extra 10 Micron bags?	53		Order more when level reaches 30
Organo Clay OR-601 operating and in good condition?	Yes	No	parallel new media 3/22/2011
Organo Clay OR-602 operating and in good condition?	Yes	No	parallel new media 3/23/2011
Carbon C-701 operating and in good condition?	Yes	No	parallel new media 3/23/2011
Carbon C-702 operating and in good condition?	Yes	No	parallel new media 3/22/2011
Arion Resin AR-801 operating and in good condition?	Yes	No	parallel new media 3/22/2011
Arion Resin AR-802 operating and in good condition?	Yes	No	parallel new media 3/22/2011
Calibrate PH and temperature meter?	Yes	No	
BW storage water Tank 900 in good condition and free of leaks?	Yes	No	
BW storage water Tank 900 sediment?	Yes	No	
Treated water is clear and free of odor?	Yes	No	
Pump P-901 operating and in good condition?	Yes	No	New unit 1/18/2011
Pump P-902 operating and in good condition?	Yes	No	Rebuilt unit 3/8/2011
GJJWTF meter operating and in good condition?	Yes	No	
BW water Tank 1000 in good condition and free of leaks?	Yes	No	
BW water Tank 1000 sediment?	Yes	No	placed water from cleaning into tank 6/21/2011
Pump P-903 operating and in good condition?	Yes	No	
NMH-1 manway cover in good condition?	Yes	No	Cleaned 6/21/2011 Clean Harbors
NMH-1 pump panel operating and in good condition?	Yes	No	
NMH-1 internal piping and electrical in good condition?	Yes	No	
Change LNAPL boom in NMH-1?	Yes	No	
Pump P-101 operating?	Yes	No	New unit 6/21/2011
Pump P-102 operating?	Yes	No	Rebuilt unit 6/21/2011
NMH-6 manway cover in good condition?	Yes	No	
NMH-6 pump panel operating and in good condition?	Yes	No	
NMH-6 internal piping and electrical in good condition?	Yes	No	
Change LNAPL boom in NMH-6?	Yes	No	NAPL installed boom
Pump P-201 operating?	Yes	No	New unit 4/20/2010
Pump P-202 operating?	yes	No	Rebuilt unit 4/20/2010

ATTACHMENT C

Analytical Data – Treated Effluent Water (September 2011)

ANALYTICAL REPORT

TestAmerica Laboratories, Inc.

TestAmerica Buffalo

10 Hazelwood Drive

Amherst, NY 14228-2298

Tel: (716)691-2600

TestAmerica Job ID: 480-9719-1

Client Project/Site: Camp Dresser & McKee

Sampling Event: NG Gloversville

For:

Camp Dresser & McKee Inc

One General Motors Drive

Syracuse, New York 13206

Attn: Matthew Millias

Peggy Gray-Erdmann

Authorized for release by:

09/27/2011 11:10:28 AM

Peggy Gray-Erdmann

Project Manager II

peggy.gray-erdmann@testamericainc.com

LINKS

Review your project
results through

TotalAccess

Have a Question?



Visit us at:

www.testamericainc.com

Results relate only to the items tested and the sample(s) as received by the laboratory. The test results in this report meet all 2003 NELAC and 2009 TNI requirements for accredited parameters, exceptions are noted in this report. This report may not be reproduced except in full, and with written approval from the laboratory. For questions please contact the Project Manager at the e-mail address or telephone number listed on this page.

This report has been electronically signed and authorized by the signatory. Electronic signature is intended to be the legally binding equivalent of a traditionally handwritten signature.

Table of Contents

Cover Page	1
Table of Contents	2
Definitions/Glossary	3
Case Narrative	4
Detection Summary	5
Client Sample Results	6
Surrogate Summary	8
QC Sample Results	9
QC Association Summary	14
Lab Chronicle	17
Certification Summary	18
Method Summary	19
Sample Summary	20
Detection Limit Exceptions Summary	21
Chain of Custody	22
Receipt Checklists	23



Definitions/Glossary

Client: Camp Dresser & McKee Inc
Project/Site: Camp Dresser & McKee

TestAmerica Job ID: 480-9719-1

Qualifiers

GC/MS Semi VOA

Qualifier	Qualifier Description
X	Surrogate is outside control limits

General Chemistry

Qualifier	Qualifier Description
HF	Field parameter with a holding time of 15 minutes
H	Sample was prepped or analyzed beyond the specified holding time

Glossary

Abbreviation	These commonly used abbreviations may or may not be present in this report.
☼	Listed under the "D" column to designate that the result is reported on a dry weight basis
%R	Percent Recovery
DL, RA, RE, IN	Indicates a Dilution, Reanalysis, Re-extraction, or additional Initial metals/anion analysis of the sample
EDL	Estimated Detection Limit
EPA	United States Environmental Protection Agency
MDL	Method Detection Limit
ML	Minimum Level (Dioxin)
ND	Not detected at the reporting limit (or MDL or EDL if shown)
PQL	Practical Quantitation Limit
RL	Reporting Limit
RPD	Relative Percent Difference, a measure of the relative difference between two points
TEF	Toxicity Equivalent Factor (Dioxin)
TEQ	Toxicity Equivalent Quotient (Dioxin)

Case Narrative

Client: Camp Dresser & McKee Inc
Project/Site: Camp Dresser & McKee

TestAmerica Job ID: 480-9719-1

Job ID: 480-9719-1

Laboratory: TestAmerica Buffalo

Narrative

Job Narrative 480-9719-1

Receipt

Method(s) 7196A: The following sample was received outside of holding time for CR+6 analysis: System Composite 0911 (480-9719-3).

All other samples were received in good condition within temperature requirements.

GC/MS VOA

No analytical or quality issues were noted.

GC/MS Semi VOA

Method(s) 625: Surrogate recovery (p-Terphenyl-d14) was outside control limits for the following sample: System Grab 0911 (480-9719-1). This surrogate is a base surrogate. The target analytes for this sample are all acids, all acid surrogates are compliant, therefore data has been reported.

No other analytical or quality issues were noted.

GC Semi VOA

No analytical or quality issues were noted.

Metals

No analytical or quality issues were noted.

General Chemistry

Method(s) 420.4, 9066: The sample duplicate precision for the the following sample associated with batch 32774 was outside control limits: (480-9719-1 DU). The associated Laboratory Control Sample / Laboratory Control Sample Duplicate (LCS/LCSD) precision met acceptance criteria. (480-9719-1 DU)

Method(s) 7196A: The following sample was received with greater than 50% of holding time expired: System Composite 0911 (480-9719-3). As such, the laboratory had insufficient time remaining to perform the analysis within holding time. System Composite 0911 (480-9719-3)

Method(s) 7196A: The matrix spike (MS/MSD) recoveries for batch 31250 were outside control limits. The associated laboratory control sample (LCS) recovery met acceptance criteria. (480-9709-2 MS)

Method(s) SM 4500 H+ B: This analysis is normally performed in the field and has a method-defined holding time of 15 minutes. The following sample has been qualified with the "HF" flag to indicate analysis was performed in the laboratory outside the 15 minute timeframe: System Grab 0911 (480-9719-1)

No other analytical or quality issues were noted.

Organic Prep

No analytical or quality issues were noted.

Detection Summary

Client: Camp Dresser & McKee Inc
Project/Site: Camp Dresser & McKee

TestAmerica Job ID: 480-9719-1

Client Sample ID: System Grab 0911

Lab Sample ID: 480-9719-1

Analyte	Result	Qualifier	RL	RL	Unit	Dil Fac	D	Method	Prep Type
pH	7.34	HF	0.100		SU	1		SM 4500 H+ B	Total/NA

Client Sample ID: Trip Blank

Lab Sample ID: 480-9719-2

No Detections

Client Sample ID: System Composite 0911

Lab Sample ID: 480-9719-3

Analyte	Result	Qualifier	RL	MDL	Unit	Dil Fac	D	Method	Prep Type
Zinc	0.011		0.010		mg/L	1		200.7 Rev 4.4	Total/NA

Client Sample Results

Client: Camp Dresser & McKee Inc
Project/Site: Camp Dresser & McKee

TestAmerica Job ID: 480-9719-1

Client Sample ID: System Grab 0911

Lab Sample ID: 480-9719-1

Date Collected: 09/13/11 10:00

Matrix: Water

Date Received: 09/14/11 10:00

Method: 624 - Volatile Organic Compounds (GC/MS)

Analyte	Result	Qualifier	RL	MDL	Unit	D	Prepared	Analyzed	Dil Fac
Benzene	ND		5.0		ug/L			09/15/11 00:10	1
Chloroform	ND		5.0		ug/L			09/15/11 00:10	1
Ethylbenzene	ND		5.0		ug/L			09/15/11 00:10	1
1,1,2,2-Tetrachloroethane	ND		5.0		ug/L			09/15/11 00:10	1
Tetrachloroethene	ND		5.0		ug/L			09/15/11 00:10	1
Toluene	ND		5.0		ug/L			09/15/11 00:10	1

Surrogate	% Recovery	Qualifier	Limits	Prepared	Analyzed	Dil Fac
1,2-Dichloroethane-d4 (Surr)	85		72 - 130		09/15/11 00:10	1
4-Bromofluorobenzene (Surr)	87		69 - 121		09/15/11 00:10	1
Toluene-d8 (Surr)	109		70 - 123		09/15/11 00:10	1

Method: 625 - Semivolatile Organic Compounds (GC/MS)

Analyte	Result	Qualifier	RL	MDL	Unit	D	Prepared	Analyzed	Dil Fac
Pentachlorophenol	ND		4.7		ug/L		09/16/11 08:32	09/19/11 16:06	1

Surrogate	% Recovery	Qualifier	Limits	Prepared	Analyzed	Dil Fac
2,4,6-Tribromophenol	112		52 - 151	09/16/11 08:32	09/19/11 16:06	1
2-Fluorobiphenyl	80		44 - 120	09/16/11 08:32	09/19/11 16:06	1
2-Fluorophenol	40		17 - 120	09/16/11 08:32	09/19/11 16:06	1
Nitrobenzene-d5	75		42 - 120	09/16/11 08:32	09/19/11 16:06	1
Phenol-d5	28		10 - 120	09/16/11 08:32	09/19/11 16:06	1
p-Terphenyl-d14	126	X	22 - 125	09/16/11 08:32	09/19/11 16:06	1

General Chemistry

Analyte	Result	Qualifier	RL	MDL	Unit	D	Prepared	Analyzed	Dil Fac
Oil & Grease	ND		4.8		mg/L		09/17/11 09:19	09/17/11 11:54	1
Phenolics, Total Recoverable	ND		0.010		mg/L		09/21/11 17:50	09/24/11 10:36	1
Cyanide, Total	ND		0.010		mg/L		09/15/11 10:55	09/16/11 12:35	1

Analyte	Result	Qualifier	RL	RL	Unit	D	Prepared	Analyzed	Dil Fac
pH	7.34	HF	0.100		SU			09/14/11 22:37	1

Client Sample ID: Trip Blank

Lab Sample ID: 480-9719-2

Date Collected: 09/13/11 00:00

Matrix: Water

Date Received: 09/14/11 10:00

Method: 624 - Volatile Organic Compounds (GC/MS)

Analyte	Result	Qualifier	RL	MDL	Unit	D	Prepared	Analyzed	Dil Fac
Benzene	ND		5.0		ug/L			09/15/11 00:36	1
Chloroform	ND		5.0		ug/L			09/15/11 00:36	1
Ethylbenzene	ND		5.0		ug/L			09/15/11 00:36	1
1,1,2,2-Tetrachloroethane	ND		5.0		ug/L			09/15/11 00:36	1
Tetrachloroethene	ND		5.0		ug/L			09/15/11 00:36	1
Toluene	ND		5.0		ug/L			09/15/11 00:36	1

Surrogate	% Recovery	Qualifier	Limits	Prepared	Analyzed	Dil Fac
1,2-Dichloroethane-d4 (Surr)	88		72 - 130		09/15/11 00:36	1
4-Bromofluorobenzene (Surr)	91		69 - 121		09/15/11 00:36	1
Toluene-d8 (Surr)	111		70 - 123		09/15/11 00:36	1

Client Sample Results

Client: Camp Dresser & McKee Inc
Project/Site: Camp Dresser & McKee

TestAmerica Job ID: 480-9719-1

Client Sample ID: System Composite 0911

Lab Sample ID: 480-9719-3

Date Collected: 09/13/11 10:00

Matrix: Water

Date Received: 09/14/11 10:00

Method: 625 - Semivolatile Organic Compounds (GC/MS)

Analyte	Result	Qualifier	RL	MDL	Unit	D	Prepared	Analyzed	Dil Fac
2,4,6-Trichlorophenol	ND		4.7		ug/L		09/16/11 08:32	09/19/11 16:30	1
2,4-Dichlorophenol	ND		4.7		ug/L		09/16/11 08:32	09/19/11 16:30	1
2-Chlorophenol	ND		4.7		ug/L		09/16/11 08:32	09/19/11 16:30	1
4-Chloro-3-methylphenol	ND		4.7		ug/L		09/16/11 08:32	09/19/11 16:30	1
Naphthalene	ND		4.7		ug/L		09/16/11 08:32	09/19/11 16:30	1
Pentachlorophenol	ND		4.7		ug/L		09/16/11 08:32	09/19/11 16:30	1

Surrogate	% Recovery	Qualifier	Limits	Prepared	Analyzed	Dil Fac
2,4,6-Tribromophenol	116		52 - 151	09/16/11 08:32	09/19/11 16:30	1
2-Fluorobiphenyl	75		44 - 120	09/16/11 08:32	09/19/11 16:30	1
2-Fluorophenol	40		17 - 120	09/16/11 08:32	09/19/11 16:30	1
Nitrobenzene-d5	71		42 - 120	09/16/11 08:32	09/19/11 16:30	1
p-Terphenyl-d14	123		22 - 125	09/16/11 08:32	09/19/11 16:30	1
Phenol-d5	28		10 - 120	09/16/11 08:32	09/19/11 16:30	1

Method: 608 - Organochlorine Pesticides in Water

Analyte	Result	Qualifier	RL	MDL	Unit	D	Prepared	Analyzed	Dil Fac
Aldrin	ND		0.047		ug/L		09/20/11 07:12	09/21/11 21:23	1
alpha-BHC	ND		0.047		ug/L		09/20/11 07:12	09/21/11 21:23	1
beta-BHC	ND		0.047		ug/L		09/20/11 07:12	09/21/11 21:23	1
delta-BHC	ND		0.047		ug/L		09/20/11 07:12	09/21/11 21:23	1
gamma-BHC (Lindane)	ND		0.047		ug/L		09/20/11 07:12	09/21/11 21:23	1

Surrogate	% Recovery	Qualifier	Limits	Prepared	Analyzed	Dil Fac
DCB Decachlorobiphenyl	47		26 - 145	09/20/11 07:12	09/21/11 21:23	1
DCB Decachlorobiphenyl	49		26 - 145	09/20/11 07:12	09/21/11 21:23	1
Tetrachloro-m-xylene	66		25 - 152	09/20/11 07:12	09/21/11 21:23	1
Tetrachloro-m-xylene	86		25 - 152	09/20/11 07:12	09/21/11 21:23	1

Method: 200.7 Rev 4.4 - Metals (ICP)

Analyte	Result	Qualifier	RL	MDL	Unit	D	Prepared	Analyzed	Dil Fac
Antimony	ND		0.020		mg/L		09/15/11 07:55	09/15/11 17:52	1
Arsenic	ND		0.010		mg/L		09/15/11 07:55	09/15/11 17:52	1
Cadmium	ND		0.0010		mg/L		09/15/11 07:55	09/15/11 17:52	1
Chromium	ND		0.0040		mg/L		09/15/11 07:55	09/15/11 17:52	1
Copper	ND		0.010		mg/L		09/15/11 07:55	09/15/11 17:52	1
Lead	ND		0.0050		mg/L		09/15/11 07:55	09/15/11 17:52	1
Nickel	ND		0.010		mg/L		09/15/11 07:55	09/15/11 17:52	1
Selenium	ND		0.015		mg/L		09/15/11 07:55	09/15/11 17:52	1
Silver	ND		0.0030		mg/L		09/15/11 07:55	09/15/11 17:52	1
Thallium	ND		0.020		mg/L		09/15/11 07:55	09/15/11 17:52	1
Zinc	0.011		0.010		mg/L		09/15/11 07:55	09/15/11 17:52	1

Method: 245.1 - Mercury (CVAA)

Analyte	Result	Qualifier	RL	MDL	Unit	D	Prepared	Analyzed	Dil Fac
Mercury	ND		0.00020		mg/L		09/15/11 11:55	09/15/11 17:14	1

General Chemistry

Analyte	Result	Qualifier	RL	MDL	Unit	D	Prepared	Analyzed	Dil Fac
Cr (VI)	ND	H	0.010		mg/L			09/14/11 11:35	1

Surrogate Summary

Client: Camp Dresser & McKee Inc
Project/Site: Camp Dresser & McKee

TestAmerica Job ID: 480-9719-1

Method: 624 - Volatile Organic Compounds (GC/MS)

Matrix: Water

Prep Type: Total/NA

Lab Sample ID	Client Sample ID	Percent Surrogate Recovery (Acceptance Limits)		
		12DCE (72-130)	BFB (69-121)	TOL (70-123)
480-9719-1	System Grab 0911	85	87	109
480-9719-2	Trip Blank	88	91	111
LCS 480-31225/4	Lab Control Sample	112	94	109
MB 480-31225/5	Method Blank	113	93	107
Surrogate Legend				
12DCE = 1,2-Dichloroethane-d4 (Surr)				
BFB = 4-Bromofluorobenzene (Surr)				
TOL = Toluene-d8 (Surr)				

Method: 625 - Semivolatile Organic Compounds (GC/MS)

Matrix: Water

Prep Type: Total/NA

Lab Sample ID	Client Sample ID	Percent Surrogate Recovery (Acceptance Limits)					
		TBP (52-151)	FBP (44-120)	2FP (17-120)	NBZ (42-120)	PHL (10-120)	TPH (22-125)
480-9719-1	System Grab 0911	112	80	40	75	28	126 X
480-9719-3	System Composite 0911	116	75	40	71	28	123
LCS 480-31530/2-A	Lab Control Sample	116	94	52	89	36	124
LCSD 480-31530/3-A	Lab Control Sample Dup	110	87	49	82	35	115
MB 480-31530/1-A	Method Blank	116	64	32	57	23	121
Surrogate Legend							
TBP = 2,4,6-Tribromophenol							
FBP = 2-Fluorobiphenyl							
2FP = 2-Fluorophenol							
NBZ = Nitrobenzene-d5							
PHL = Phenol-d5							
TPH = p-Terphenyl-d14							

Method: 608 - Organochlorine Pesticides in Water

Matrix: Water

Prep Type: Total/NA

Lab Sample ID	Client Sample ID	Percent Surrogate Recovery (Acceptance Limits)			
		DCB1 (26-145)	DCB2 (26-145)	TCX1 (25-152)	TCX2 (25-152)
480-9719-3	System Composite 0911	47	49	66	86
LCS 480-31905/2-A	Lab Control Sample	76	68	53	70
MB 480-31905/1-A	Method Blank	61	72	58	71
Surrogate Legend					
DCB = DCB Decachlorobiphenyl					
TCX = Tetrachloro-m-xylene					

QC Sample Results

Client: Camp Dresser & McKee Inc
Project/Site: Camp Dresser & McKee

TestAmerica Job ID: 480-9719-1

Method: 624 - Volatile Organic Compounds (GC/MS)

Lab Sample ID: MB 480-31225/5

Matrix: Water

Analysis Batch: 31225

Client Sample ID: Method Blank

Prep Type: Total/NA

Analyte	MB Result	MB Qualifier	RL	MDL	Unit	D	Prepared	Analyzed	Dil Fac
Benzene	ND		5.0		ug/L			09/14/11 14:37	1
Chloroform	ND		5.0		ug/L			09/14/11 14:37	1
Ethylbenzene	ND		5.0		ug/L			09/14/11 14:37	1
1,1,2,2-Tetrachloroethane	ND		5.0		ug/L			09/14/11 14:37	1
Tetrachloroethene	ND		5.0		ug/L			09/14/11 14:37	1
Toluene	ND		5.0		ug/L			09/14/11 14:37	1

Surrogate	MB % Recovery	MB Qualifier	Limits	Prepared	Analyzed	Dil Fac
1,2-Dichloroethane-d4 (Surr)	113		72 - 130		09/14/11 14:37	1
4-Bromofluorobenzene (Surr)	93		69 - 121		09/14/11 14:37	1
Toluene-d8 (Surr)	107		70 - 123		09/14/11 14:37	1

Lab Sample ID: LCS 480-31225/4

Matrix: Water

Analysis Batch: 31225

Client Sample ID: Lab Control Sample

Prep Type: Total/NA

Analyte	Spike Added	LCS Result	LCS Qualifier	Unit	D	% Rec	% Rec. Limits
Benzene	20.0	20.5		ug/L		103	64 - 136
Chloroform	20.0	20.9		ug/L		105	68 - 133
Ethylbenzene	20.0	21.9		ug/L		110	59 - 141
1,1,2,2-Tetrachloroethane	20.0	21.9		ug/L		110	61 - 140
Tetrachloroethene	20.0	20.8		ug/L		104	74 - 127
Toluene	20.0	21.7		ug/L		109	75 - 126

Surrogate	LCS % Recovery	LCS Qualifier	Limits
1,2-Dichloroethane-d4 (Surr)	112		72 - 130
4-Bromofluorobenzene (Surr)	94		69 - 121
Toluene-d8 (Surr)	109		70 - 123

Method: 625 - Semivolatile Organic Compounds (GC/MS)

Lab Sample ID: MB 480-31530/1-A

Matrix: Water

Analysis Batch: 31765

Client Sample ID: Method Blank

Prep Type: Total/NA

Prep Batch: 31530

Analyte	MB Result	MB Qualifier	RL	MDL	Unit	D	Prepared	Analyzed	Dil Fac
Pentachlorophenol	ND		5.0		ug/L		09/16/11 08:32	09/19/11 11:48	1

Surrogate	MB % Recovery	MB Qualifier	Limits	Prepared	Analyzed	Dil Fac
2,4,6-Tribromophenol	116		52 - 151	09/16/11 08:32	09/19/11 11:48	1
2-Fluorobiphenyl	64		44 - 120	09/16/11 08:32	09/19/11 11:48	1
2-Fluorophenol	32		17 - 120	09/16/11 08:32	09/19/11 11:48	1
Nitrobenzene-d5	57		42 - 120	09/16/11 08:32	09/19/11 11:48	1
Phenol-d5	23		10 - 120	09/16/11 08:32	09/19/11 11:48	1
p-Terphenyl-d14	121		22 - 125	09/16/11 08:32	09/19/11 11:48	1

QC Sample Results

Client: Camp Dresser & McKee Inc
Project/Site: Camp Dresser & McKee

TestAmerica Job ID: 480-9719-1

Method: 625 - Semivolatile Organic Compounds (GC/MS) (Continued)

Lab Sample ID: LCS 480-31530/2-A

Matrix: Water

Analysis Batch: 31765

Client Sample ID: Lab Control Sample

Prep Type: Total/NA

Prep Batch: 31530

Analyte	Spike Added	LCS Result	LCS Qualifier	Unit	D	% Rec	% Rec. Limits
Pentachlorophenol	100	102		ug/L		102	14 - 176
Surrogate	% Recovery	LCS Qualifier	Limits				
2,4,6-Tribromophenol	116		52 - 151				
2-Fluorobiphenyl	94		44 - 120				
2-Fluorophenol	52		17 - 120				
Nitrobenzene-d5	89		42 - 120				
Phenol-d5	36		10 - 120				
p-Terphenyl-d14	124		22 - 125				

Lab Sample ID: LCSD 480-31530/3-A

Matrix: Water

Analysis Batch: 31765

Client Sample ID: Lab Control Sample Dup

Prep Type: Total/NA

Prep Batch: 31530

Analyte	Spike Added	LCSD Result	LCSD Qualifier	Unit	D	% Rec	% Rec. Limits	RPD	RPD Limit
Pentachlorophenol	100	103		ug/L		103	14 - 176	1	21
Surrogate	% Recovery	LCSD Qualifier	Limits						
2,4,6-Tribromophenol	110		52 - 151						
2-Fluorobiphenyl	87		44 - 120						
2-Fluorophenol	49		17 - 120						
Nitrobenzene-d5	82		42 - 120						
Phenol-d5	35		10 - 120						
p-Terphenyl-d14	115		22 - 125						

Method: 608 - Organochlorine Pesticides in Water

Lab Sample ID: MB 480-31905/1-A

Matrix: Water

Analysis Batch: 32146

Client Sample ID: Method Blank

Prep Type: Total/NA

Prep Batch: 31905

Analyte	MB Result	MB Qualifier	RL	MDL	Unit	D	Prepared	Analyzed	Dil Fac
Aldrin	ND		0.050		ug/L		09/20/11 07:12	09/21/11 10:51	1
alpha-BHC	ND		0.050		ug/L		09/20/11 07:12	09/21/11 10:51	1
beta-BHC	ND		0.050		ug/L		09/20/11 07:12	09/21/11 10:51	1
delta-BHC	ND		0.050		ug/L		09/20/11 07:12	09/21/11 10:51	1
gamma-BHC (Lindane)	ND		0.050		ug/L		09/20/11 07:12	09/21/11 10:51	1
Surrogate	% Recovery	MB Qualifier	Limits						
DCB Decachlorobiphenyl	61		26 - 145						
DCB Decachlorobiphenyl	72		26 - 145						
Tetrachloro-m-xylene	58		25 - 152						
Tetrachloro-m-xylene	71		25 - 152						

QC Sample Results

Client: Camp Dresser & McKee Inc
Project/Site: Camp Dresser & McKee

TestAmerica Job ID: 480-9719-1

Method: 608 - Organochlorine Pesticides in Water (Continued)

Lab Sample ID: LCS 480-31905/2-A

Matrix: Water

Analysis Batch: 32146

Client Sample ID: Lab Control Sample

Prep Type: Total/NA

Prep Batch: 31905

Analyte	Spike Added	LCS Result	LCS Qualifier	Unit	D	% Rec	% Rec.	
							Limits	
Aldrin	0.500	0.247		ug/L		49	35 - 120	
alpha-BHC	0.500	0.342		ug/L		68	39 - 121	
beta-BHC	0.500	0.394		ug/L		79	39 - 138	
delta-BHC	0.500	0.375		ug/L		75	40 - 121	
gamma-BHC (Lindane)	0.500	0.372		ug/L		74	58 - 120	

Surrogate	LCS LCS		Limits
	% Recovery	Qualifier	
DCB Decachlorobiphenyl	76		26 - 145
DCB Decachlorobiphenyl	68		26 - 145
Tetrachloro-m-xylene	53		25 - 152
Tetrachloro-m-xylene	70		25 - 152

Method: 200.7 Rev 4.4 - Metals (ICP)

Lab Sample ID: MB 480-31274/1-A

Matrix: Water

Analysis Batch: 31536

Client Sample ID: Method Blank

Prep Type: Total/NA

Prep Batch: 31274

Analyte	MB MB		RL	MDL	Unit	D	Prepared	Analyzed	Dil Fac
	Result	Qualifier							
Antimony	ND		0.020		mg/L		09/15/11 07:55	09/15/11 17:17	1
Arsenic	ND		0.010		mg/L		09/15/11 07:55	09/15/11 17:17	1
Cadmium	ND		0.0010		mg/L		09/15/11 07:55	09/15/11 17:17	1
Chromium	ND		0.0040		mg/L		09/15/11 07:55	09/15/11 17:17	1
Copper	ND		0.010		mg/L		09/15/11 07:55	09/15/11 17:17	1
Lead	ND		0.0050		mg/L		09/15/11 07:55	09/15/11 17:17	1
Nickel	ND		0.010		mg/L		09/15/11 07:55	09/15/11 17:17	1
Selenium	ND		0.015		mg/L		09/15/11 07:55	09/15/11 17:17	1
Silver	ND		0.0030		mg/L		09/15/11 07:55	09/15/11 17:17	1
Thallium	ND		0.020		mg/L		09/15/11 07:55	09/15/11 17:17	1
Zinc	ND		0.010		mg/L		09/15/11 07:55	09/15/11 17:17	1

Lab Sample ID: LCS 480-31274/2-A

Matrix: Water

Analysis Batch: 31536

Client Sample ID: Lab Control Sample

Prep Type: Total/NA

Prep Batch: 31274

Analyte	Spike Added	LCS Result	LCS Qualifier	Unit	D	% Rec	% Rec.	
							Limits	
Antimony	0.200	0.200		mg/L		100	85 - 115	
Arsenic	0.200	0.199		mg/L		100	85 - 115	
Cadmium	0.200	0.200		mg/L		100	85 - 115	
Chromium	0.200	0.202		mg/L		101	85 - 115	
Copper	0.200	0.206		mg/L		103	85 - 115	
Lead	0.200	0.198		mg/L		99	85 - 115	
Nickel	0.200	0.197		mg/L		98	85 - 115	
Selenium	0.200	0.200		mg/L		100	85 - 115	
Silver	0.0500	0.0490		mg/L		98	85 - 115	
Thallium	0.200	0.199		mg/L		100	85 - 115	
Zinc	0.200	0.203		mg/L		101	85 - 115	

QC Sample Results

Client: Camp Dresser & McKee Inc
Project/Site: Camp Dresser & McKee

TestAmerica Job ID: 480-9719-1

Method: 245.1 - Mercury (CVAA)

Lab Sample ID: MB 480-31391/22-A
Matrix: Water
Analysis Batch: 31484

Client Sample ID: Method Blank
Prep Type: Total/NA
Prep Batch: 31391

Analyte	MB Result	MB Qualifier	RL	MDL	Unit	D	Prepared	Analyzed	Dil Fac
Mercury	ND		0.00020		mg/L		09/15/11 11:55	09/15/11 17:32	1

Lab Sample ID: LCS 480-31391/21-A
Matrix: Water
Analysis Batch: 31484

Client Sample ID: Lab Control Sample
Prep Type: Total/NA
Prep Batch: 31391

Analyte	Spike Added	LCS Result	LCS Qualifier	Unit	D	% Rec	% Rec. Limits
Mercury	0.00667	0.00663		mg/L		99	85 - 115

Method: 1664A - HEM and SGT-HEM

Lab Sample ID: MB 480-31688/1-A
Matrix: Water
Analysis Batch: 31690

Client Sample ID: Method Blank
Prep Type: Total/NA
Prep Batch: 31688

Analyte	MB Result	MB Qualifier	RL	MDL	Unit	D	Prepared	Analyzed	Dil Fac
Oil & Grease	ND		5.0		mg/L		09/17/11 09:19	09/17/11 09:42	1

Lab Sample ID: LCS 480-31688/2-A
Matrix: Water
Analysis Batch: 31690

Client Sample ID: Lab Control Sample
Prep Type: Total/NA
Prep Batch: 31688

Analyte	Spike Added	LCS Result	LCS Qualifier	Unit	D	% Rec	% Rec. Limits
Oil & Grease	25.0	20.70		mg/L		83	78 - 114

Method: 420.4 - Phenolics, Total Recoverable

Lab Sample ID: MB 480-32326/1-A
Matrix: Water
Analysis Batch: 32774

Client Sample ID: Method Blank
Prep Type: Total/NA
Prep Batch: 32326

Analyte	MB Result	MB Qualifier	RL	MDL	Unit	D	Prepared	Analyzed	Dil Fac
Phenolics, Total Recoverable	ND		0.010		mg/L		09/21/11 15:55	09/24/11 08:56	1

Lab Sample ID: LCS 480-32326/2-A
Matrix: Water
Analysis Batch: 32774

Client Sample ID: Lab Control Sample
Prep Type: Total/NA
Prep Batch: 32326

Analyte	Spike Added	LCS Result	LCS Qualifier	Unit	D	% Rec	% Rec. Limits
Phenolics, Total Recoverable	0.100	0.0984		mg/L		98	90 - 110

Method: 7196A - Chromium, Hexavalent

Lab Sample ID: MB 480-31250/3
Matrix: Water
Analysis Batch: 31250

Client Sample ID: Method Blank
Prep Type: Total/NA

Analyte	MB Result	MB Qualifier	RL	MDL	Unit	D	Prepared	Analyzed	Dil Fac
Cr (VI)	ND		0.010		mg/L			09/14/11 11:35	1

QC Sample Results

Client: Camp Dresser & McKee Inc
Project/Site: Camp Dresser & McKee

TestAmerica Job ID: 480-9719-1

Method: 7196A - Chromium, Hexavalent (Continued)

Lab Sample ID: LCS 480-31250/4

Matrix: Water

Analysis Batch: 31250

Client Sample ID: Lab Control Sample

Prep Type: Total/NA

Analyte	Spike Added	LCS Result	LCS Qualifier	Unit	D	% Rec	% Rec. Limits
Cr (VI)	0.0500	0.0476		mg/L		95	85 - 115

Method: SM 4500 CN E - Cyanide, Total

Lab Sample ID: MB 480-31467/2-A

Matrix: Water

Analysis Batch: 31617

Client Sample ID: Method Blank

Prep Type: Total/NA

Prep Batch: 31467

Analyte	MB Result	MB Qualifier	RL	MDL	Unit	D	Prepared	Analyzed	Dil Fac
Cyanide, Total	ND		0.010		mg/L		09/15/11 10:55	09/16/11 12:25	1

Lab Sample ID: LCS 480-31467/1-A

Matrix: Water

Analysis Batch: 31617

Client Sample ID: Lab Control Sample

Prep Type: Total/NA

Prep Batch: 31467

Analyte	Spike Added	LCS Result	LCS Qualifier	Unit	D	% Rec	% Rec. Limits
Cyanide, Total	0.250	0.263		mg/L		105	90 - 110

Method: SM 4500 H+ B - pH

Lab Sample ID: LCS 480-31331/1

Matrix: Water

Analysis Batch: 31331

Client Sample ID: Lab Control Sample

Prep Type: Total/NA

Analyte	Spike Added	LCS Result	LCS Qualifier	Unit	D	% Rec	% Rec. Limits
pH	7.00	7.000		SU		100	99 - 101

QC Association Summary

Client: Camp Dresser & McKee Inc
Project/Site: Camp Dresser & McKee

TestAmerica Job ID: 480-9719-1

GC/MS VOA

Analysis Batch: 31225

Lab Sample ID	Client Sample ID	Prep Type	Matrix	Method	Prep Batch
480-9719-1	System Grab 0911	Total/NA	Water	624	
480-9719-2	Trip Blank	Total/NA	Water	624	
LCS 480-31225/4	Lab Control Sample	Total/NA	Water	624	
MB 480-31225/5	Method Blank	Total/NA	Water	624	

GC/MS Semi VOA

Prep Batch: 31530

Lab Sample ID	Client Sample ID	Prep Type	Matrix	Method	Prep Batch
480-9719-1	System Grab 0911	Total/NA	Water	625	
480-9719-3	System Composite 0911	Total/NA	Water	625	
LCS 480-31530/2-A	Lab Control Sample	Total/NA	Water	625	
LCSD 480-31530/3-A	Lab Control Sample Dup	Total/NA	Water	625	
MB 480-31530/1-A	Method Blank	Total/NA	Water	625	

Analysis Batch: 31765

Lab Sample ID	Client Sample ID	Prep Type	Matrix	Method	Prep Batch
480-9719-1	System Grab 0911	Total/NA	Water	625	31530
480-9719-3	System Composite 0911	Total/NA	Water	625	31530
LCS 480-31530/2-A	Lab Control Sample	Total/NA	Water	625	31530
LCSD 480-31530/3-A	Lab Control Sample Dup	Total/NA	Water	625	31530
MB 480-31530/1-A	Method Blank	Total/NA	Water	625	31530

GC Semi VOA

Prep Batch: 31905

Lab Sample ID	Client Sample ID	Prep Type	Matrix	Method	Prep Batch
480-9719-3	System Composite 0911	Total/NA	Water	3510C	
LCS 480-31905/2-A	Lab Control Sample	Total/NA	Water	3510C	
MB 480-31905/1-A	Method Blank	Total/NA	Water	3510C	

Analysis Batch: 32146

Lab Sample ID	Client Sample ID	Prep Type	Matrix	Method	Prep Batch
480-9719-3	System Composite 0911	Total/NA	Water	608	31905
LCS 480-31905/2-A	Lab Control Sample	Total/NA	Water	608	31905
MB 480-31905/1-A	Method Blank	Total/NA	Water	608	31905

Metals

Prep Batch: 31274

Lab Sample ID	Client Sample ID	Prep Type	Matrix	Method	Prep Batch
480-9719-3	System Composite 0911	Total/NA	Water	200.7	
LCS 480-31274/2-A	Lab Control Sample	Total/NA	Water	200.7	
MB 480-31274/1-A	Method Blank	Total/NA	Water	200.7	

Prep Batch: 31391

Lab Sample ID	Client Sample ID	Prep Type	Matrix	Method	Prep Batch
480-9719-3	System Composite 0911	Total/NA	Water	245.1	
LCS 480-31391/21-A	Lab Control Sample	Total/NA	Water	245.1	
MB 480-31391/22-A	Method Blank	Total/NA	Water	245.1	

QC Association Summary

Client: Camp Dresser & McKee Inc
Project/Site: Camp Dresser & McKee

TestAmerica Job ID: 480-9719-1

Metals (Continued)

Analysis Batch: 31484

Lab Sample ID	Client Sample ID	Prep Type	Matrix	Method	Prep Batch
480-9719-3	System Composite 0911	Total/NA	Water	245.1	31391
LCS 480-31391/21-A	Lab Control Sample	Total/NA	Water	245.1	31391
MB 480-31391/22-A	Method Blank	Total/NA	Water	245.1	31391

Analysis Batch: 31536

Lab Sample ID	Client Sample ID	Prep Type	Matrix	Method	Prep Batch
480-9719-3	System Composite 0911	Total/NA	Water	200.7 Rev 4.4	31274
LCS 480-31274/2-A	Lab Control Sample	Total/NA	Water	200.7 Rev 4.4	31274
MB 480-31274/1-A	Method Blank	Total/NA	Water	200.7 Rev 4.4	31274

General Chemistry

Analysis Batch: 31250

Lab Sample ID	Client Sample ID	Prep Type	Matrix	Method	Prep Batch
480-9719-3	System Composite 0911	Total/NA	Water	7196A	
LCS 480-31250/4	Lab Control Sample	Total/NA	Water	7196A	
MB 480-31250/3	Method Blank	Total/NA	Water	7196A	

Analysis Batch: 31331

Lab Sample ID	Client Sample ID	Prep Type	Matrix	Method	Prep Batch
480-9719-1	System Grab 0911	Total/NA	Water	SM 4500 H+ B	
LCS 480-31331/1	Lab Control Sample	Total/NA	Water	SM 4500 H+ B	

Prep Batch: 31467

Lab Sample ID	Client Sample ID	Prep Type	Matrix	Method	Prep Batch
480-9719-1	System Grab 0911	Total/NA	Water	SM 4500 CN C	
LCS 480-31467/1-A	Lab Control Sample	Total/NA	Water	SM 4500 CN C	
MB 480-31467/2-A	Method Blank	Total/NA	Water	SM 4500 CN C	

Analysis Batch: 31617

Lab Sample ID	Client Sample ID	Prep Type	Matrix	Method	Prep Batch
480-9719-1	System Grab 0911	Total/NA	Water	SM 4500 CN E	31467
LCS 480-31467/1-A	Lab Control Sample	Total/NA	Water	SM 4500 CN E	31467
MB 480-31467/2-A	Method Blank	Total/NA	Water	SM 4500 CN E	31467

Prep Batch: 31688

Lab Sample ID	Client Sample ID	Prep Type	Matrix	Method	Prep Batch
480-9719-1	System Grab 0911	Total/NA	Water	1664A	
LCS 480-31688/2-A	Lab Control Sample	Total/NA	Water	1664A	
MB 480-31688/1-A	Method Blank	Total/NA	Water	1664A	

Analysis Batch: 31690

Lab Sample ID	Client Sample ID	Prep Type	Matrix	Method	Prep Batch
480-9719-1	System Grab 0911	Total/NA	Water	1664A	31688
LCS 480-31688/2-A	Lab Control Sample	Total/NA	Water	1664A	31688
MB 480-31688/1-A	Method Blank	Total/NA	Water	1664A	31688

Prep Batch: 32326

Lab Sample ID	Client Sample ID	Prep Type	Matrix	Method	Prep Batch
480-9719-1	System Grab 0911	Total/NA	Water	Distill/Phenol	
LCS 480-32326/2-A	Lab Control Sample	Total/NA	Water	Distill/Phenol	
MB 480-32326/1-A	Method Blank	Total/NA	Water	Distill/Phenol	

QC Association Summary

Client: Camp Dresser & McKee Inc
Project/Site: Camp Dresser & McKee

TestAmerica Job ID: 480-9719-1

General Chemistry (Continued)

Analysis Batch: 32774

Lab Sample ID	Client Sample ID	Prep Type	Matrix	Method	Prep Batch
480-9719-1	System Grab 0911	Total/NA	Water	420.4	32326
LCS 480-32326/2-A	Lab Control Sample	Total/NA	Water	420.4	32326
MB 480-32326/1-A	Method Blank	Total/NA	Water	420.4	32326

Lab Chronicle

Client: Camp Dresser & McKee Inc
Project/Site: Camp Dresser & McKee

TestAmerica Job ID: 480-9719-1

Client Sample ID: System Grab 0911

Date Collected: 09/13/11 10:00

Date Received: 09/14/11 10:00

Lab Sample ID: 480-9719-1

Matrix: Water

Prep Type	Batch Type	Batch Method	Run	Dilution Factor	Batch Number	Prepared Or Analyzed	Analyst	Lab
Total/NA	Analysis	624		1	31225	09/15/11 00:10	TRB	TAL BUF
Total/NA	Prep	625			31530	09/16/11 08:32	MZ	TAL BUF
Total/NA	Analysis	625		1	31765	09/19/11 16:06	RMM	TAL BUF
Total/NA	Analysis	SM 4500 H+ B		1	31331	09/14/11 22:37	ES	TAL BUF
Total/NA	Prep	SM 4500 CN C			31467	09/15/11 10:55	AP	TAL BUF
Total/NA	Analysis	SM 4500 CN E		1	31617	09/16/11 12:35	LRM	TAL BUF
Total/NA	Prep	1664A			31688	09/17/11 09:19	JS	TAL BUF
Total/NA	Analysis	1664A		1	31690	09/17/11 11:54	JS	TAL BUF
Total/NA	Prep	Distill/Phenol			32326	09/21/11 17:50	KS	TAL BUF
Total/NA	Analysis	420.4		1	32774	09/24/11 10:36	PN	TAL BUF

Client Sample ID: Trip Blank

Date Collected: 09/13/11 00:00

Date Received: 09/14/11 10:00

Lab Sample ID: 480-9719-2

Matrix: Water

Prep Type	Batch Type	Batch Method	Run	Dilution Factor	Batch Number	Prepared Or Analyzed	Analyst	Lab
Total/NA	Analysis	624		1	31225	09/15/11 00:36	TRB	TAL BUF

Client Sample ID: System Composite 0911

Date Collected: 09/13/11 10:00

Date Received: 09/14/11 10:00

Lab Sample ID: 480-9719-3

Matrix: Water

Prep Type	Batch Type	Batch Method	Run	Dilution Factor	Batch Number	Prepared Or Analyzed	Analyst	Lab
Total/NA	Prep	625			31530	09/16/11 08:32	MZ	TAL BUF
Total/NA	Analysis	625		1	31765	09/19/11 16:30	RMM	TAL BUF
Total/NA	Prep	3510C			31905	09/20/11 07:12	KV	TAL BUF
Total/NA	Analysis	608		1	32146	09/21/11 21:23	LW	TAL BUF
Total/NA	Prep	245.1			31391	09/15/11 11:55	MM	TAL BUF
Total/NA	Analysis	245.1		1	31484	09/15/11 17:14	MM	TAL BUF
Total/NA	Prep	200.7			31274	09/15/11 07:55	JM	TAL BUF
Total/NA	Analysis	200.7 Rev 4.4		1	31536	09/15/11 17:52	LH	TAL BUF
Total/NA	Analysis	7196A		1	31250	09/14/11 11:35	PN	TAL BUF

Laboratory References:

TAL BUF = TestAmerica Buffalo, 10 Hazelwood Drive, Amherst, NY 14228-2298, TEL (716)691-2600

Certification Summary

Client: Camp Dresser & McKee Inc
Project/Site: Camp Dresser & McKee

TestAmerica Job ID: 480-9719-1

Laboratory	Authority	Program	EPA Region	Certification ID
TestAmerica Buffalo	Arkansas	State Program	6	88-0686
TestAmerica Buffalo	California	NELAC	9	1169CA
TestAmerica Buffalo	Connecticut	State Program	1	PH-0568
TestAmerica Buffalo	Florida	NELAC	4	E87672
TestAmerica Buffalo	Georgia	Georgia EPD	4	N/A
TestAmerica Buffalo	Georgia	State Program	4	956
TestAmerica Buffalo	Illinois	NELAC	5	100325 / 200003
TestAmerica Buffalo	Iowa	State Program	7	374
TestAmerica Buffalo	Kansas	NELAC	7	E-10187
TestAmerica Buffalo	Kentucky	Kentucky UST	4	30
TestAmerica Buffalo	Kentucky	State Program	4	90029
TestAmerica Buffalo	Louisiana	NELAC	6	02031
TestAmerica Buffalo	Maine	State Program	1	NY0044
TestAmerica Buffalo	Maryland	State Program	3	294
TestAmerica Buffalo	Massachusetts	State Program	1	M-NY044
TestAmerica Buffalo	Michigan	State Program	5	9937
TestAmerica Buffalo	Minnesota	NELAC	5	036-999-337
TestAmerica Buffalo	New Hampshire	NELAC	1	68-00281
TestAmerica Buffalo	New Hampshire	NELAC	1	2337
TestAmerica Buffalo	New Jersey	NELAC	2	NY455
TestAmerica Buffalo	New York	NELAC	2	10026
TestAmerica Buffalo	North Dakota	State Program	8	R-176
TestAmerica Buffalo	Oklahoma	State Program	6	9421
TestAmerica Buffalo	Oregon	NELAC	10	NY200003
TestAmerica Buffalo	Pennsylvania	NELAC	3	68-00281
TestAmerica Buffalo	Tennessee	State Program	4	TN02970
TestAmerica Buffalo	Texas	NELAC	6	T104704412-08-TX
TestAmerica Buffalo	USDA	USDA		P330-08-00242
TestAmerica Buffalo	Virginia	NELAC Secondary AB	3	460185
TestAmerica Buffalo	Virginia	State Program	3	278
TestAmerica Buffalo	Washington	State Program	10	C1677
TestAmerica Buffalo	West Virginia	West Virginia DEP	3	252
TestAmerica Buffalo	Wisconsin	State Program	5	998310390

Accreditation may not be offered or required for all methods and analytes reported in this package. Please contact your project manager for the laboratory's current list of certified methods and analytes.

Method Summary

Client: Camp Dresser & McKee Inc
Project/Site: Camp Dresser & McKee

TestAmerica Job ID: 480-9719-1

Method	Method Description	Protocol	Laboratory
624	Volatile Organic Compounds (GC/MS)	40CFR136A	TAL BUF
625	Semivolatile Organic Compounds (GC/MS)	40CFR136A	TAL BUF
608	Organochlorine Pesticides in Water	40CFR136A	TAL BUF
200.7 Rev 4.4	Metals (ICP)	EPA	TAL BUF
245.1	Mercury (CVAA)	EPA	TAL BUF
1664A	HEM and SGT-HEM	1664A	TAL BUF
420.4	Phenolics, Total Recoverable	MCAWW	TAL BUF
7196A	Chromium, Hexavalent	SW846	TAL BUF
SM 4500 CN E	Cyanide, Total	SM	TAL BUF
SM 4500 H+ B	pH	SM	TAL BUF

Protocol References:

1664A = EPA-821-98-002

40CFR136A = "Methods for Organic Chemical Analysis of Municipal Industrial Wastewater", 40CFR, Part 136, Appendix A, October 26, 1984 and subsequent revisions.

EPA = US Environmental Protection Agency

MCAWW = "Methods For Chemical Analysis Of Water And Wastes", EPA-600/4-79-020, March 1983 And Subsequent Revisions.

SM = "Standard Methods For The Examination Of Water And Wastewater",

SW846 = "Test Methods For Evaluating Solid Waste, Physical/Chemical Methods", Third Edition, November 1986 And Its Updates.

Laboratory References:

TAL BUF = TestAmerica Buffalo, 10 Hazelwood Drive, Amherst, NY 14228-2298, TEL (716)691-2600

Sample Summary

Client: Camp Dresser & McKee Inc
Project/Site: Camp Dresser & McKee

TestAmerica Job ID: 480-9719-1

Lab Sample ID	Client Sample ID	Matrix	Collected	Received
480-9719-1	System Grab 0911	Water	09/13/11 10:00	09/14/11 10:00
480-9719-2	Trip Blank	Water	09/13/11 00:00	09/14/11 10:00
480-9719-3	System Composite 0911	Water	09/13/11 10:00	09/14/11 10:00

Detection Limit Exceptions Summary

Client: Camp Dresser & McKee Inc
Project/Site: Camp Dresser & McKee

TestAmerica Job ID: 480-9719-1

The requested project specific reporting limits listed below were less than lab standard quantitation limits but greater than or equal to the lab MDL. It must be noted that results reported below lab standard quantitation limits (PQL) may result in false positive/false negative values and less accurate quantitation. Routine laboratory procedures do not indicate corrective action for detections below the laboratory's PQL.

Method	Matrix	Analyte	Units	Client RL	Lab PQL
625	Water	Pentachlorophenol	ug/L	5.0	10
625	Water	Pentachlorophenol	ug/L	5.0	10

22

[illegible]

Login Sample Receipt Checklist

Client: Camp Dresser & McKee Inc

Job Number: 480-9719-1

Login Number: 9719

List Source: TestAmerica Buffalo

List Number: 1

Creator: Wienke, Robert

Question	Answer	Comment
Radioactivity either was not measured or, if measured, is at or below background	True	
The cooler's custody seal, if present, is intact.	True	
The cooler or samples do not appear to have been compromised or tampered with.	True	
Samples were received on ice.	True	
Cooler Temperature is acceptable.	True	
Cooler Temperature is recorded.	True	
COC is present.	True	
COC is filled out in ink and legible.	True	
COC is filled out with all pertinent information.	True	
Is the Field Sampler's name present on COC?	True	
There are no discrepancies between the sample IDs on the containers and the COC.	True	
Samples are received within Holding Time.	True	
Sample containers have legible labels.	True	
Containers are not broken or leaking.	True	
Sample collection date/times are provided.	True	
Appropriate sample containers are used.	True	
Sample bottles are completely filled.	True	
Sample Preservation Verified	True	
There is sufficient vol. for all requested analyses, incl. any requested MS/MSDs	True	
VOA sample vials do not have headspace or bubble is <6mm (1/4") in diameter.	True	
If necessary, staff have been informed of any short hold time or quick TAT needs	True	
Multiphasic samples are not present.	True	
Samples do not require splitting or compositing.	True	
Sampling Company provided.	False	
Samples received within 48 hours of sampling.	True	
Samples requiring field filtration have been filtered in the field.	N/A	
Chlorine Residual checked.	N/A	

Attachment D

System Operational Data Summary (July 2011 – December 2011)

**NG Gloversville (Hill St.) Site
Water Treatment System
Operational Data Summary
Period July 1, 2011 - December 31, 2011**

			NMH-1			NMH-6			Combined		FIT-900		POTW	Comments
		Accumulated Time Calculated	Flow Meter	Average Flow Calculated	Totalizer	Flow Meter	Average Flow Calculated	Totalizer	Total Instantaneous Influent Flow	Total Average Flow Calculated	Instantaneous Total Effluent Flow Rate	Totalizer	Mechanical Totalizer	
		minutes	GPM	GPM	Gallons	GPM	GPM	Gallons	GPM	GPM	GPM	Gallons	Gallons X 1000	
2011		Total Minutes 525780	Average 54.05	Average 30.70	Total 16148340	Average 18.77	Average 6.93	Total 2998961	Average 70.66	Average 37.19	Average 69.95	19535997	21330	
	July	45000	50.27	30.26	1355375	18.39	6.34	287407	68.66	36.60	70.02	1622192	1778	
	August	44310	52.04	31.26	1387670	19.98	6.04	269919	72.02	37.30	70.02	1639499	1813	
	September	43155	53.89	37.14	1576960	19.65	9.03	374403	73.55	46.17	70.16	1930064	2144	
	October	45135	55.05	36.67	1640223	17.60	8.95	n/a	63.85	46.12	69.91	2006519	2250	NMH-6 flow meter not working correctly.
	November	43230	58.56	34.88	1510399	25.95	7.20	76937	68.94	36.32	70.01	1801111	2033	NMH-6 flow meter not working correctly.
	December	44505	56.22	35.53	1578638	26.77	7.46	331602	82.99	42.99	70.00	1900233	2180	