



FACT SHEET

State Superfund Program

Receive Site Fact Sheets by *Email*. See "For More Information" to Learn How.

Site Name: Old Moreau Dredge Spoil Area
DEC Site #: 546040
Site Address: West River Road
Moreau, NY 12831

February 2012

Remedy Proposed for State Superfund Site; Public Comment Period and Public Meeting Announced

Public Meeting, Tuesday, 3/6/2012 at 7:00 PM

Town of Moreau Office Building / 61 Hudson Street / South Glens Falls, NY

NYSDEC invites you to a public meeting to discuss the remedy proposed for the site. You are encouraged to provide comments at the meeting, and during the 30-day comment period described in this fact sheet.

The public is invited to comment on a remedy proposed by the New York State Department of Environmental Conservation (NYSDEC or Department) related to Old Moreau Dredge Spoil Area ("site") located at West River Road, Moreau, Saratoga County. Please see the map for the site location.

Documents related to the cleanup of this site can be found at the location(s) identified below under "Where to Find Information."

State Superfund Program: New York's State Superfund Program (SSF) identifies and characterizes suspected inactive hazardous waste disposal sites. Sites that pose a significant threat to public health and/or the environment go through a process of investigation, evaluation, cleanup and monitoring.

NYSDEC attempts to identify parties responsible for site contamination and require cleanup before committing State funds.

For more information about the SSF, visit:
<http://www.dec.ny.gov/chemical/8439.html>

How to Comment

NYSDEC is accepting written comments about the proposed plan for 30 days, from February 24, 2012 through March 26, 2012. The proposed plan is available for review at the location(s) identified below under "Where to Find Information." Please submit comments to the project manager listed under Project Related Questions in the "Who to Contact" area below.

The site is listed as a Class "2" site in the State Registry of Inactive Hazardous Waste Sites (list of State Superfund sites). A Class 2 site represents a significant threat to public health or the environment; action is required.

Proposed Remedial Action Plan

The remedy proposed for the site includes:

1. Remedial Design

A remedial design program will be implemented to provide the details necessary for the

construction, operation, maintenance, and monitoring of the remedial program. Green remediation principles and techniques will be implemented to the extent feasible in the design, implementation, and site management of the remedy as per DER-31. The major green remediation components are as follows;

- Considering the environmental impacts of treatment technologies and remedy stewardship over the long term;
- Reducing direct and indirect greenhouse gas and other emissions;
- Increasing energy efficiency and minimizing use of non-renewable energy;
- Conserving and efficiently managing resources and materials;
- Reducing waste, increasing recycling and increasing reuse of materials which would otherwise be considered a waste;
- Maximizing habitat value and creating habitat when possible;
- Fostering green and healthy communities and working landscapes which balance ecological, economic and social goals; and
- Integrating the remedy with the end use where possible and encouraging green and sustainable re-development.

2. Installation of a cover system where surficial PCB concentrations exceed 1 part per million - these areas include all portions of the Old Moreau site between the raised margin along the Hudson River and West River Road, along the toe of the raised margin shared with the Special Area 13 Dredge Spoil Disposal Area to the south and southeast, along the shared margin with the adjoining capped area/drainage system of the Moreau Dredge Spoil Disposal Site to the south and southwest, and between the northwestern margin of the adjoining capped area/drainage system of the Moreau Dredge Spoil Disposal Site and Mill Site Road.

3. A site cover will be required to allow for commercial use of the site. The cover will consist either of the structures such as buildings, pavement, sidewalks comprising any site development or a soil cover in areas where the upper one foot of exposed surface soil will exceed the applicable soil cleanup objectives (SCOs). Where the soil cover is required it will be a minimum of one foot of soil, meeting the SCOs for cover material as set forth in 6 NYCRR Part 375-6.7(d) for commercial use. The soil cover will be placed over a demarcation layer, with the upper six inches of the soil of sufficient quality to maintain a vegetation layer. Any fill material brought to the site will meet the requirements for the identified site use as set forth in 6 NYCRR Part 375-6.7(d).

4. In an area located near the southwestern part of the dredge spoil disposal area and the shared margin with the Moreau Dredge Spoil Disposal Site (proximal to groundwater monitoring well OM-08) where the soils are potentially contributing to an exceedance of groundwater standards for PCBs, removal and off-site disposal of PCB contaminated soil to meet the groundwater SCOs in Part 375 of 3.2 ppm. Groundwater sampling during the design will confirm the need to, and extent of, the removal needed to abate this potential source of groundwater contamination.

Approximately 6800 cubic yards of soil are estimated to require removal. Clean fill meeting the requirements of 6 NYCRR Part 375-6.8 will be brought in to replace the excavated soil and establish the designed grades at the site.

5. Imposition of an institutional control in the form of an environmental easement or an environmental notice for the controlled property that:

- (a) requires the remedial party or site owner to complete and submit to the Department a periodic certification of institutional and engineering controls in accordance with Part 375-1.8 (h)(3);

- (b) allows the use and development of the controlled property for restricted residential (parcels zoned residential) or commercial (parcels not zoned residential) as defined by Part 375-1.8(g), although land use is subject to local zoning laws;
- (c) restricts the use of groundwater as a source of potable or process water, without necessary water quality treatment as determined by the NYSDOH or County DOH;
- (d) prohibits agriculture or vegetable gardens on the portions of the controlled property which were subject to remediation; and
- (e) requires compliance with the Department approved Site Management Plan.

6. A Site Management Plan is required, which includes the following:

- (a) an Institutional and Engineering Control Plan that identifies all use restrictions and engineering controls for the site and details the steps and media-specific requirements necessary to ensure the following institutional and/or engineering controls remain in place and effective:

Institutional Controls: The Environmental Easements and Environmental Notices discussed in Paragraph 5 above.

Engineering Controls: The soil covers discussed in Paragraph 2 and 3 above.

This plan includes, but may not be limited to: (i) Excavation Plan which details the provisions for management of future excavations in areas of remaining contamination; (ii) descriptions of the provisions of the environmental easement including any land use and/or groundwater use restrictions; (iii) provisions for the management and inspection of the identified engineering controls; (iv) maintaining site access controls and Department notification; and (v) the steps necessary for the periodic reviews and certification of the institutional and/or engineering controls; and

- (b) a Monitoring Plan to include, but not be limited to: (i) monitoring of groundwater to assess the performance and effectiveness of the remedy; and (ii) a schedule of monitoring and frequency of submittals to the Department.

NYSDEC developed the proposed remedy after reviewing the detailed investigation of the site and evaluating the remedial options in the “feasibility study” submitted under New York’s State Superfund Program.

Next Steps

NYSDEC will consider public comments as it finalizes the remedy for the site. The selected remedy will be described in a document called a "Record of Decision" that will explain why the remedy was selected and respond to public comments. The project then moves to designing and performing the cleanup action to address the site contamination.

NYSDEC will keep the public informed throughout the investigation and cleanup of the site.

Location:

The Old Moreau Dredge Spoil Area site is located in the Town of Moreau (Saratoga County) on a 40-acre parcel of land situated along the western shore of the Hudson River and directly across the river channel from the southern end of Rogers Island near Fort Edward in Washington County.

Site Features:

The overall parcel is triangular in shape and is bounded by the River on the northeastern side, by a former waste paper recycling plant and the plant's access road on the western side, and a mixture of vacant farm land and wet meadows to the south.

Current Zoning/Use:

The site is currently zoned commercial and is vacant.

Historic Use:

The northern-most portion of this parcel was used by the New York State Department of Transportation for the disposal of sediment and debris removed from the Hudson River channels near Rogers Island and the Champlain Canal's navigation channel near Champlain Canal Lock 7 at Fort Edward following the demolition of the Fort Edward Dam in 1973. Department of Transportation records report that nearly 378,000 cubic yards of dredge spoil material were disposed of at this site between July 1974 and November 1975. The foot-print of the disposal area covers about 23 acres in area on the 40 acre parcel, formerly owned by New York State and now owned by Georgia Pacific.

Site Geology and Hydrogeology:

The natural site overburden is consistent with the regional model of alluvial and stratified unconsolidated glacio-fluvial and glacio-lacustrine deposits, except it is on a smaller scale with greater variability. Native material underlying and surrounding the dredge spoil materials at the site primarily consists of brown to gray silty clays inter-fingered with layers of gray to brown silty sands.

Groundwater flow in the area typically moves away from the slight topographic rise on the west and toward the Hudson River in a general east-southeast direction.

Additional site details, including environmental and health assessment summaries, are available on NYSDEC's website at:

<http://www.dec.ny.gov/cfm/external/derexternal/haz/details.cfm?pageid=3&progno=546040>

FOR MORE INFORMATION

Where to Find Information

Project documents are available at the following location(s) to help the public stay informed.

USEPA - Hudson River PCB Project Field Office

421 Lower Main Street

Hudson Falls, NY 12839

phone: (518) 747-4389

(hrfo@roadrunner.com)

New York State Department of Environmental Conservation

Attn: William Shaw

625 Broadway

Albany, NY 12233

phone: 518-402-9676

Town of Moreau Office Building

61 Hudson Street

South Glens Falls, NY 12803

phone: (518) 792-1030

Who to Contact

Comments and questions are always welcome and should be directed as follows:

Project Related Questions

William Shaw

Department of Environmental Conservation

Division of Environmental Remediation

625 Broadway

Albany, NY 12233-7013

518-402-9676

wxshaw@gw.dec.state.ny.us

Site-Related Health Questions

Deanna Ripstein

New York State Department of Health

NYSDOH - Environmental Exposure Investigation

547 River Road

Troy, NY 12180

(518) 402-7860

We encourage you to share this fact sheet with neighbors and tenants, and/or post this fact sheet in a prominent area of your building for others to see.

Receive Site Fact Sheets by Email

Have site information such as this fact sheet sent right to your email inbox.

NYSDEC invites you to sign up with one or more contaminated sites

county email listservs available at the following web page:

<http://www.dec.ny.gov/chemical/61092.html>. It's quick, it's free,
and it will help keep you *better informed*.

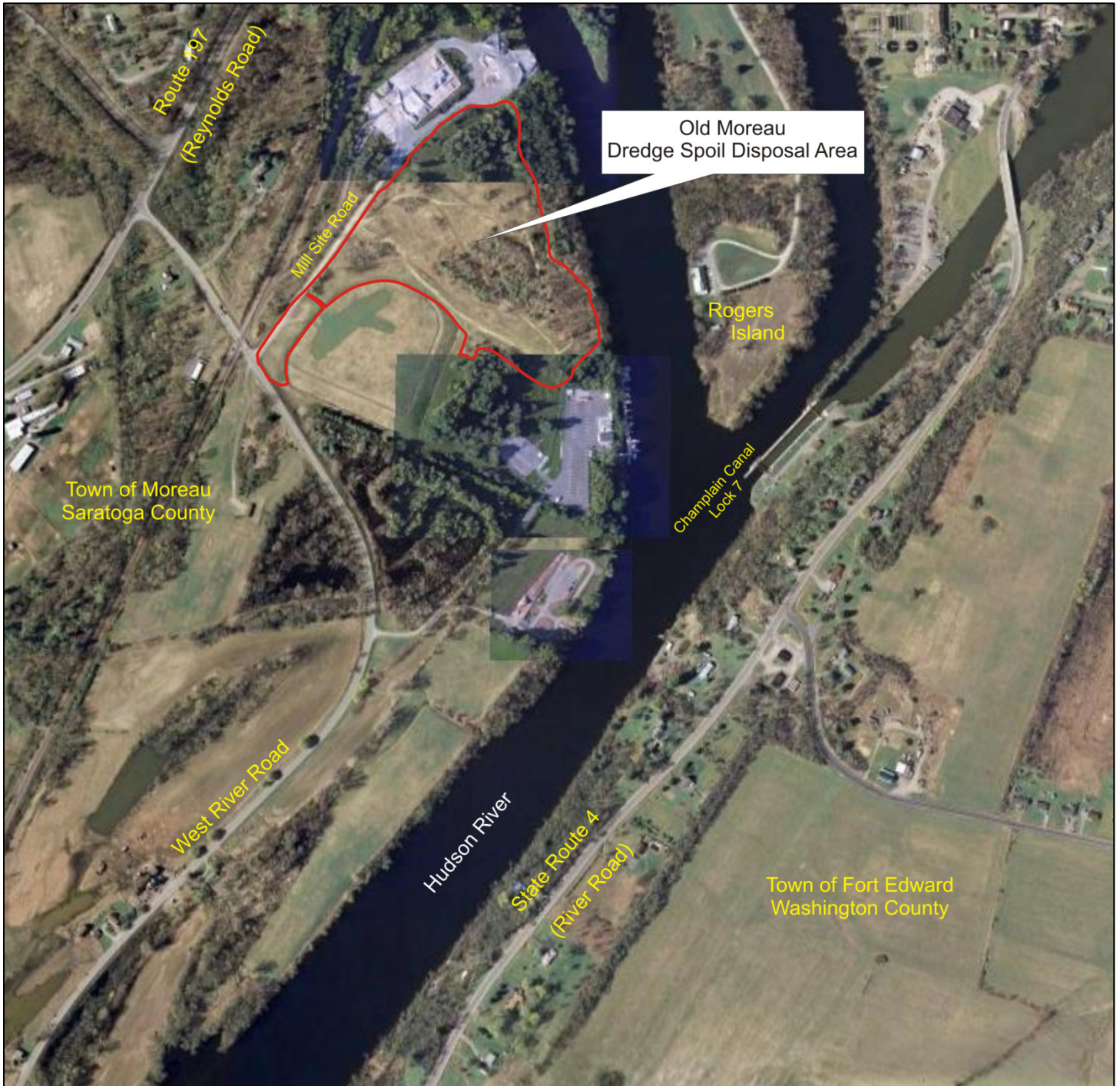


As a listserv member, you will periodically receive site-related information/announcements for all contaminated sites in the county(ies) you select.

You may continue also to receive paper copies of site information for a time after you sign up with a county listserv, until the transition to electronic distribution is complete.

Note: Please disregard if you already have signed up and received this fact sheet electronically.

Figure 1 - Location Map
Old Moreau Dredge Spoil Disposal Area
Proposed Remedial Action Plan
February 2012



Aerial Imagery extracted from Google Earth and Microsoft's Bing Maps.