



# FACT SHEET

## State Superfund Program

**Receive Site Fact Sheets by *Email*.** See "For More Information" to Learn How.

Site Name: Moreau Dredge Spoil Disposal Site  
DEC Site #: 546042  
Site Address: County Route 29  
Moreau, NY 12803

February 2012

### Remedy Proposed for State Superfund Site; Public Comment Period and Public Meeting Announced

**Public Meeting, Tuesday, 3/6/2012 at 7:00 PM**

**Town of Moreau Office Building / 61 Hudson Street / South Glens Falls, NY**

NYSDEC invites you to a public meeting to discuss the remedy proposed for the site. You are encouraged to provide comments at the meeting, and during the 30-day comment period described in this fact sheet.

The public is invited to comment on a remedy proposed by the New York State Department of Environmental Conservation (NYSDEC or Department) related to Moreau Dredge Spoil Disposal Site ("site") located at County Route 29, Moreau, Saratoga County. Please see the map for the site location.

Documents related to the cleanup of this site can be found at the location(s) identified below under "Where to Find Information."

**State Superfund Program:** New York's State Superfund Program (SSF) identifies and characterizes suspected inactive hazardous waste disposal sites. Sites that pose a significant threat to public health and/or the environment go through a process of investigation, evaluation, cleanup and monitoring.

NYSDEC attempts to identify parties responsible for site contamination and require cleanup before committing State funds.

For more information about the SSF, visit:  
<http://www.dec.ny.gov/chemical/8439.html>

#### How to Comment

NYSDEC is accepting written comments about the proposed plan for 30 days, from February 24, 2012 through March 26, 2012. The proposed plan is available for review at the location(s) identified below under "Where to Find Information." Please submit comments to the project manager listed under Project Related Questions in the "Who to Contact" area below.

The site is listed as a Class "2" site in the State Registry of Inactive Hazardous Waste Sites (list of State Superfund sites). A Class 2 site represents a significant threat to public health or the environment; action is required.

#### Proposed Remedial Action Plan

The remedy proposed for the site includes:

1. Remedial Design

A remedial design program will be implemented to provide the details necessary for the

construction, operation, maintenance, and monitoring of the remedial program. Green remediation principles and techniques will be implemented to the extent feasible in the design, implementation, and site management of the remedy as per DER-31. The major green remediation components are as follows;

- Considering the environmental impacts of treatment technologies and remedy stewardship over the long term;
- Reducing direct and indirect greenhouse gas and other emissions;
- Increasing energy efficiency and minimizing use of non-renewable energy;
- Conserving and efficiently managing resources and materials;
- Reducing waste, increasing recycling and increasing reuse of materials which would otherwise be considered a waste;
- Maximizing habitat value and creating habitat when possible;
- Fostering green and healthy communities and working landscapes which balance ecological, economic and social goals; and
- Integrating the remedy with the end use where possible and encouraging green and sustainable re-development.

2. Maintain the existing isolation cap/cover, which has been constructed, over the former dredge spoil disposal structure to satisfy Toxic Substances Control Act requirements.

3. Installation of a cover system where surficial PCB concentrations exceed 1 part per million beyond the margins of the closed and covered portions of the Moreau Dredge Spoil Disposal Site. This will involve the installation, maintenance, and monitoring of a soil cover system. Included are the areas along the margins of the drainage system surrounding the containment cell and that lead away from the containment cell toward the Hudson River where PCB levels exceed 1 ppm.

A site cover will be required to allow for commercial use of the site. The cover will consist of a soil cover in areas where the upper one foot of exposed surface soil will exceed the applicable soil cleanup objectives (SCOs). Where the soil cover is required it will be a minimum of one foot of soil, meeting the SCOs for cover material as set forth in 6 NYCRR Part 375-6.7(d) for commercial use. The soil cover will be placed over a demarcation layer, with the upper six inches of the soil of sufficient quality to maintain a vegetation layer. Any fill material brought to the site will meet the requirements for the identified site use as set forth in 6 NYCRR Part 375-6.7(d).

4. For those accumulations of soil within the existing, asphalt-lined drainage system around the Moreau Dredge Spoil Disposal Site, removal and consolidation under the cover to be applied over the soil along the margins of the drainage system surrounding the closed and covered containment cell. Approximately 395 cubic yards of soil will be removed.

5. Imposition of an institutional control in the form of an environmental easement or an environmental notice for the controlled property that:
- (a) requires the remedial party or site owner to complete and submit to the Department a periodic certification of institutional and engineering controls in accordance with Part 375-1.8 (h)(3);
  - (b) allows the use and development of the controlled property for restricted residential (parcels zoned residential) or commercial (parcels not zoned residential) as defined by Part 375-1.8(g), although land use is subject to local zoning laws;
  - (c) restricts the use of groundwater as a source of potable or process water, without necessary water quality treatment as determined by the NYSDOH or County DOH;
  - (d) prohibits agriculture or vegetable gardens on the portions of the controlled property which were subject to remediation; and
  - (e) requires compliance with the Department approved Site Management Plan.

6. A Site Management Plan is required, which includes the following:
- (a) an Institutional and Engineering Control Plan that identifies all use restrictions and engineering controls for the site and details the steps and media-specific requirements necessary to ensure the following institutional and/or engineering controls remain in place and effective:

Institutional Controls: The Environmental Easements and Environmental Notices discussed in Paragraph 5 above.

Engineering Controls: The existing isolation cap/cover discussed in Paragraph 2 above and the soil covers discussed in Paragraph 3 above.

This plan includes, but may not be limited to: (i) Excavation Plan which details the provisions for management of future excavations in areas of remaining contamination; (ii) descriptions of the provisions of the environmental easement including any land use and/or groundwater use restrictions; (iii) provisions for the management and inspection of the identified engineering controls; (iv) maintaining site access controls and Department notification; and (v) the steps necessary for the periodic reviews and certification of the institutional and/or engineering controls; and

- (b) a Monitoring Plan to include, but not be limited to: (i) monitoring of groundwater to assess the performance and effectiveness of the remedy; and (ii) a schedule of monitoring and frequency of submittals to the Department.

NYSDEC developed the proposed remedy after reviewing the detailed investigation of the site and evaluating the remedial options in the "feasibility study" submitted under New York's State Superfund Program.

### **Next Steps**

NYSDEC will consider public comments as it finalizes the remedy for the site. The selected remedy will be described in a document called a "Record of Decision" that will explain why the remedy was selected and respond to public comments. The project then moves to designing and performing the cleanup action to address the site contamination.

NYSDEC will keep the public informed throughout the investigation and cleanup of the site.

### **Background**

Location:

The Moreau Dredge Spoil Disposal Site is located in the Town of Moreau, Saratoga County. The site is immediately west of the Hudson River, east of West River Road, a short distance south of rail line which crosses the Hudson River at Rogers Island. NY State Route 197 is approximately 1/4 mile north of the site.

#### Site Features:

The Moreau Dredge Spoil Disposal Site consists of a closed and covered containment cell built by the New York State Department of Transportation (NYSDOT) between 1977 and 1979 to hold dewatered sediment removed from portions of the upper Hudson River following the demolition of the Fort Edward Dam in 1973. The grass covered containment cell is lined with clay and has a clay cap. The southern and eastern margins of the containment cell slope away sharply and the entire cell is surrounded with an asphalt-lined drainage system that drains rain water and directs groundwater away from the cell along the southern property margin to the Hudson River. Portions of the area east of the containment cell are a mixture of open grassy areas and woodlands, while the area furthest to the east and closest to the Hudson River is currently being used as a Work Support Marina Facility for the Hudson River PCBs Site remedial dredging project. A large portion of the parcel being used for the Work Support Marina Facility is covered with clean fill and pavement.

#### Current Zoning/Use:

The closed and covered containment cell at the site is the location of a Toxic Substances Control Act approved dredge spoil containment structure and is currently zoned Hudson River Regulatory. The eastern portion of the property occupied by the containment cell is also zoned as Hudson River Regulatory and is now the location of an active Work Support Marina Facility for the Hudson River PCBs Site remedial dredging project.

#### Historic Use:

The single lined containment cell at this site was constructed in the western portion of the current property parcel by the NYSDOT in 1977 and was used to hold dewatered dredge spoil material removed from the Hudson River around Rogers Island in conjunction with routine and emergency maintenance dredging operations and some PCB-contaminated river bottom materials or remnant deposits that were stranded along the eastern shore of the Hudson River upstream of the former Fort Edward Dam following its removal in 1973. Available NYSDOT records report that the Moreau Dredge Spoil Disposal Site was used between 1977 and 1979 for the disposal of up to 200,000 cubic yards of dredge spoil material. The containment cell was then closed and covered with a TSCA-approved clay cap installed by the NYSDOT. The site is inspected and maintained the site under the TSCA program. The latest TSCA program inspection occurred on May 20, 2010.

#### Site Geology and Hydrogeology:

The natural site overburden is consistent with the regional model of alluvial and stratified unconsolidated glacio-fluvial and glacio-lacustrine deposits, except it is on a smaller scale with greater variability. Native material underlying and surrounding the dredge spoil materials at the site primarily consists of brown to gray silty clays inter-fingered with layers of gray to brown silty sands.

Groundwater flow in the area outside of the closed and covered containment cell typically moves away from the slight topographic rise on the west and toward the Hudson River in a general east-southeast direction.

## **FOR MORE INFORMATION**

### **Where to Find Information**

Project documents are available at the following location(s) to help the public stay informed.

NYSDEC - Central Office  
Attn: William Shaw  
625 Broadway  
Albany, NY 12233  
phone: (518) 402-9676

USEPA - Hudson River PCB Project Field Office  
421 Lower Main Street  
Hudson Falls, NY 12839  
phone: (518) 747-4389  
(hrfo@roadrunner.com)

Town of Moreau Office Building  
61 Hudson Street  
South Glens Falls, NY 12803  
phone: (518) 792-1030

### **Who to Contact**

Comments and questions are always welcome and should be directed as follows:

#### Project Related Questions

William Shaw  
Department of Environmental Conservation  
Division of Environmental Remediation  
625 Broadway  
Albany, NY 12233-7013  
518-402-9676  
wxshaw@gw.dec.state.ny.us

#### Site-Related Health Questions

Deanna Ripstein  
New York State Department of Health  
NYSDOH - Environmental Exposure Investigation  
547 River Street  
Troy, NY 12180  
(518) 402-7860

**We encourage you to share this fact sheet with neighbors and tenants, and/or post this fact sheet in a prominent area of your building for others to see.**

**Receive Site Fact Sheets by Email**

Have site information such as this fact sheet sent right to your email inbox. NYSDEC invites you to sign up with one or more contaminated sites county email listservs available at the following web page: <http://www.dec.ny.gov/chemical/61092.html>. It's quick, it's free, and it will help keep you *better informed*.



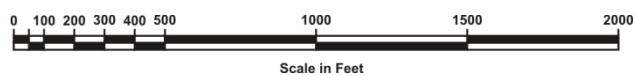
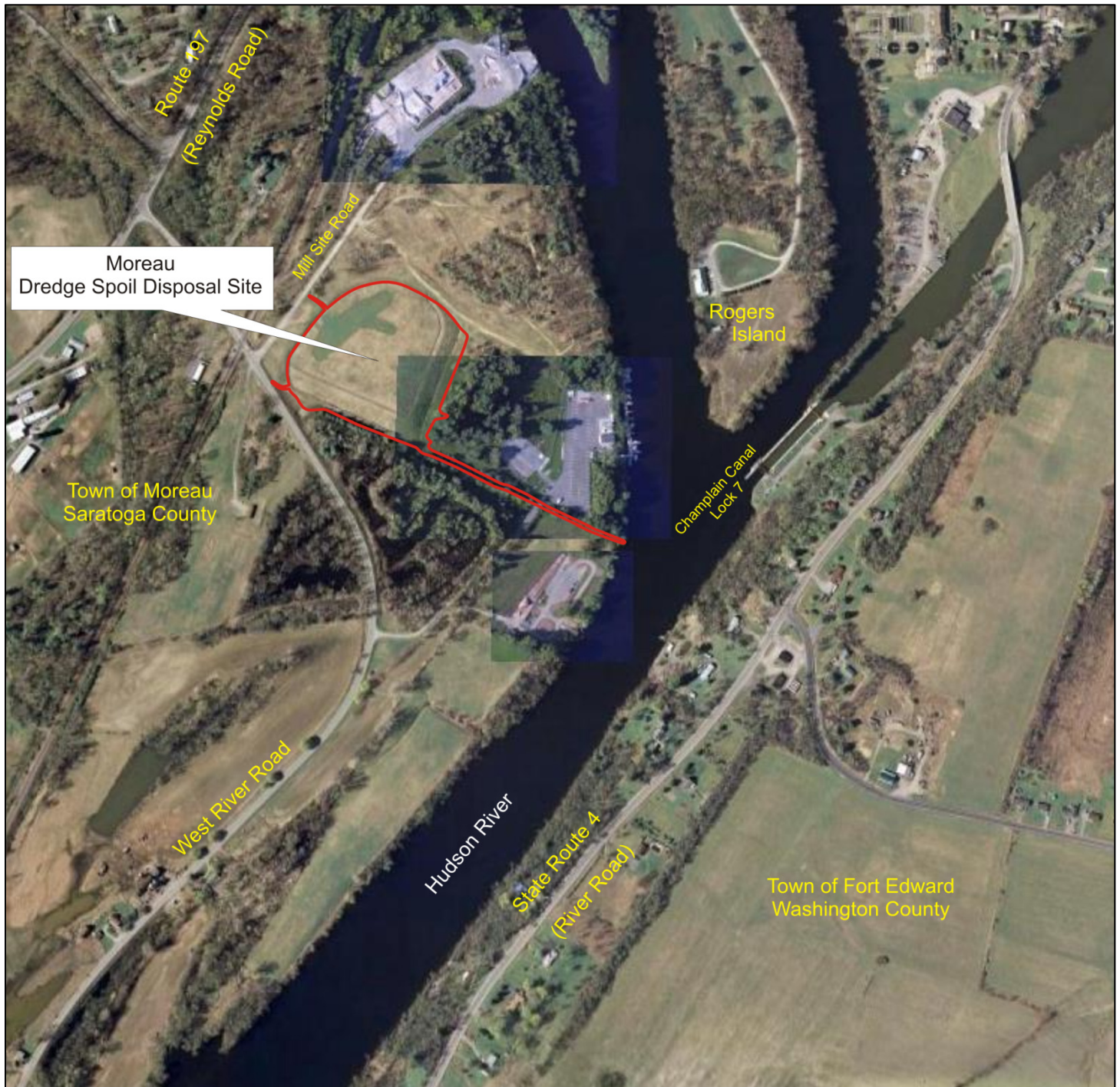
As a listserv member, you will periodically receive site-related information/announcements for all contaminated sites in the county(ies) you select.

You may continue also to receive paper copies of site information for a time after you sign up with a county listserv, until the transition to electronic distribution is complete.

Note: Please disregard if you already have signed up and received this fact sheet electronically.



**Figure 1 - Location Map**  
**Moreau Dredge Spoil Disposal Site**  
**Proposed Remedial Action Plan**  
**February 2012**



**Aerial Imagery extracted from Google Earth and Microsoft's Bing Maps.**