



Department of  
Environmental  
Conservation

# FACT SHEET

## State Superfund Program

Glens Falls Former MGP Site  
14 Mohican Street  
Glens Falls, NY

**SITE No. 557016**

**NYSDEC REGION 5**

**February 2019**

### **Where to Find Information:**

*Project documents are available at the following location(s) to help the public stay informed.*

**Crandall Public Library**  
251 Glen Street  
Glens Falls, NY 12801

**NYSDEC**  
625 Broadway, Albany, NY  
(518) 402-9662

### **Who to Contact:**

*Comments and questions are always welcome and should be directed as follows:*

#### **Project-Related Questions**

John Spellman, Project Manager  
NYSDEC  
625 Broadway, Albany, NY  
(518) 402-9662  
[john.spellman@dec.ny.gov](mailto:john.spellman@dec.ny.gov)

#### **Site-Related Health Questions**

Renata Ockerby  
NYSDOH, BEEI Room 1787  
Corning Tower, Albany, NY  
(518) 402-7860  
[beei@health.ny.gov](mailto:beei@health.ny.gov)

**For more information about New York's  
State Superfund Program, visit:**  
[www.dec.ny.gov/chemical/8439.html](http://www.dec.ny.gov/chemical/8439.html)

## **Cleanup Action to Begin at State Superfund Site**

Action is about to begin that will address contamination related to the Glens Falls Former Manufactured Gas Plant (MGP) Site, located at 14 Mohican Street in Glens Falls, Warren County. The cleanup activities will be performed by National Grid with oversight provided by the New York State Department of Environmental Conservation (NYSDEC). Documents related to the cleanup of this site are available at the locations identified to the left under "Where to Find Information."

The first phase of the project - decommissioning of site utilities, construction of a temporary staging pad and demolition of former building foundations - is underway and is expected to be completed in May 2019. The estimated cost to implement the remedy is approximately \$20 million.

**Highlights of the Upcoming Cleanup Activities:** The goal of the cleanup action for the site is to achieve cleanup levels that protect public health and the environment. The key components of the remedy are:

- Excavation and off-site disposal of approximately 16,000 cubic yards of MGP-impacted soil.
- Backfilling of excavated areas with soil that meets the NYSDEC's requirements for restricted residential use, which will also allow commercial use.
- Removal of approximately 6,000 cubic yards of contaminated sediment from the Glens Falls Feeder Canal.
- Construction of a subsurface barrier wall at the perimeter of the Henry Street Substation.
- Introduction of oxygen into the subsurface to reduce groundwater contamination.
- Construction of a cover system on the site that satisfies the NYSDEC's requirements for restricted residential use.
- Development of a Site Management Plan for the long-term maintenance of the remedy.
- Recording of an Environmental Easement for the institutional and engineering controls needed at the site.

# STATE SUPERFUND PROGRAM

---

A site-specific health and safety plan (HASP) and a Community Air Monitoring Plan (CAMP) will be implemented during remediation activities. The HASP and CAMP establish procedures to protect on-Site workers and residents and includes required air monitoring as well as dust and odor suppression measures.

**Next Steps:** The remediation is expected to be implemented in four phases. The first phase will consist of the decommissioning of site utilities, construction of a temporary staging pad and demolition of former building foundations. The second phase will consist of the removal of impacted soil from the former MGP Site. The third phase will consist of the removal of sediment from the Glens Falls Feeder Canal. The fourth phase will consist of the subsurface barrier construction. While these phases are being implemented, National Grid will also be continuing an investigation to assess MGP impacts to the Hudson River adjacent to the site.

NYSDEC will keep the public informed throughout the cleanup of the site. A public availability session will be held during the remediation to update the public on the field activities.

After cleanup activities are completed, NYSEG will prepare a Final Engineering Report. The report will describe the cleanup activities that were completed and certify that cleanup requirements have been achieved or will be achieved.

**Site Description:** The site is located approximately 300 feet west of the intersection of Mohican and Glen Streets and is adjacent to the Glen Falls Feeder Canal. The Hudson River flows approximately 30 feet to the south of the Feeder Canal, parallel to the canal, and separated from it by a bike trail referred to as the tow path. The approximately six-acre site is flat, except at the southern edge where it slopes down to the canal. There are no buildings on the site.

The site is one of approximately 250 former MGP sites that existed across New York State in the early 20<sup>th</sup> century. The Mohican Street Plant was operated by National Grid and its predecessor companies from approximately 1854 to 1950.

Additional site details, including environmental and health assessment summaries, are available on NYSDEC's Environmental Site Remediation Database (by entering the Site ID, 557016) at:

<http://www.dec.ny.gov/cfm/xtapps/derexternal/index.cfm?pageid=3>

**Summary of the Investigation:** Based upon investigations conducted to date, the contaminants of concern are coal tar and its hazardous constituents, primarily benzene, toluene, ethylbenzene, and xylenes (BTEX) and polycyclic aromatic hydrocarbons (PAHs). The majority of on-site coal tar saturated soils were observed within and near the former MGP structures, primarily the tar separator and below-grade gas holders. Coal tar was observed at thicknesses up to six feet and at depths ranging from 12 to 23 feet below grade. Elevated BTEX and PAH concentrations in soils generally coincided with areas of coal tar. BTEX, PAHs, and cyanide have been detected in groundwater exceeding the groundwater standards. Sediments in the Glens Falls Feeder Canal have been impacted with visually identifiable coal tar and contaminants consistent with those found on-site including BTEX, PAHs, and cyanide. Sediments in the Hudson River southeast of the MGP property have been impacted with visually identifiable coal tar and PAHs.

**State Superfund Program Overview:** New York's State Superfund Program (SSF) identifies and characterizes suspected inactive hazardous waste disposal sites. Sites that pose a significant threat to public health and/or the environment go through a process of investigation, evaluation, cleanup and monitoring.

NYSDEC attempts to identify parties responsible for site contamination and require cleanup before committing State funds.

For more information about the SSF, visit:

<http://www.dec.ny.gov/chemical/8439.html>

---

***We encourage you to share this fact sheet with neighbors and tenants, and/or post this fact sheet in a prominent area of your building for others to see.***

---

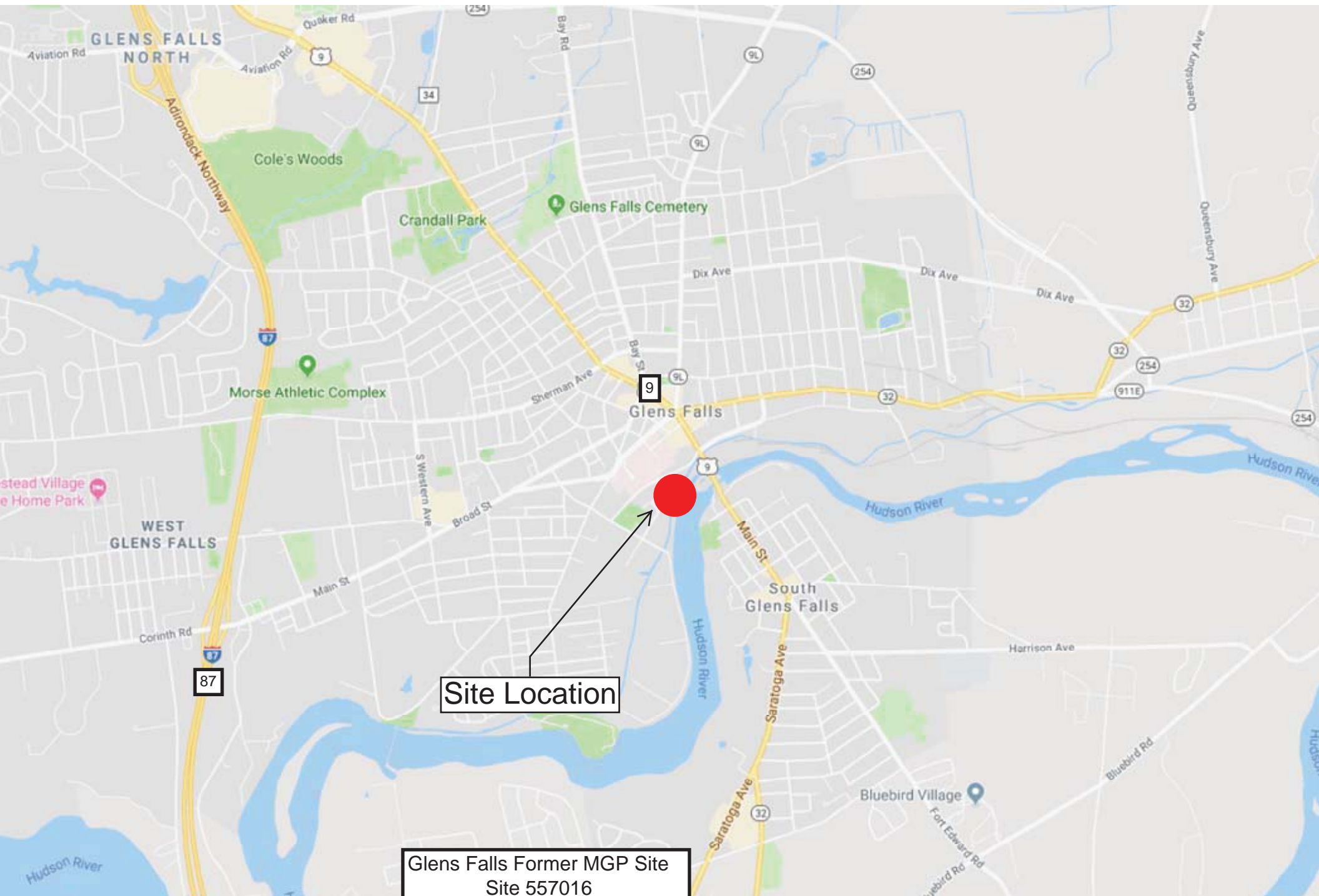
## Receive Site Fact Sheets by Email

Have site information such as this fact sheet sent right to your email inbox. NYSDEC invites you to sign up with one or more contaminated sites county email listservs at:

[www.dec.ny.gov/chemical/61092.html](http://www.dec.ny.gov/chemical/61092.html)

It's quick, it's free, and it will help keep you better informed. As a listserv member, you will periodically receive site-related information/announcements for all contaminated sites in the county(ies) you select.

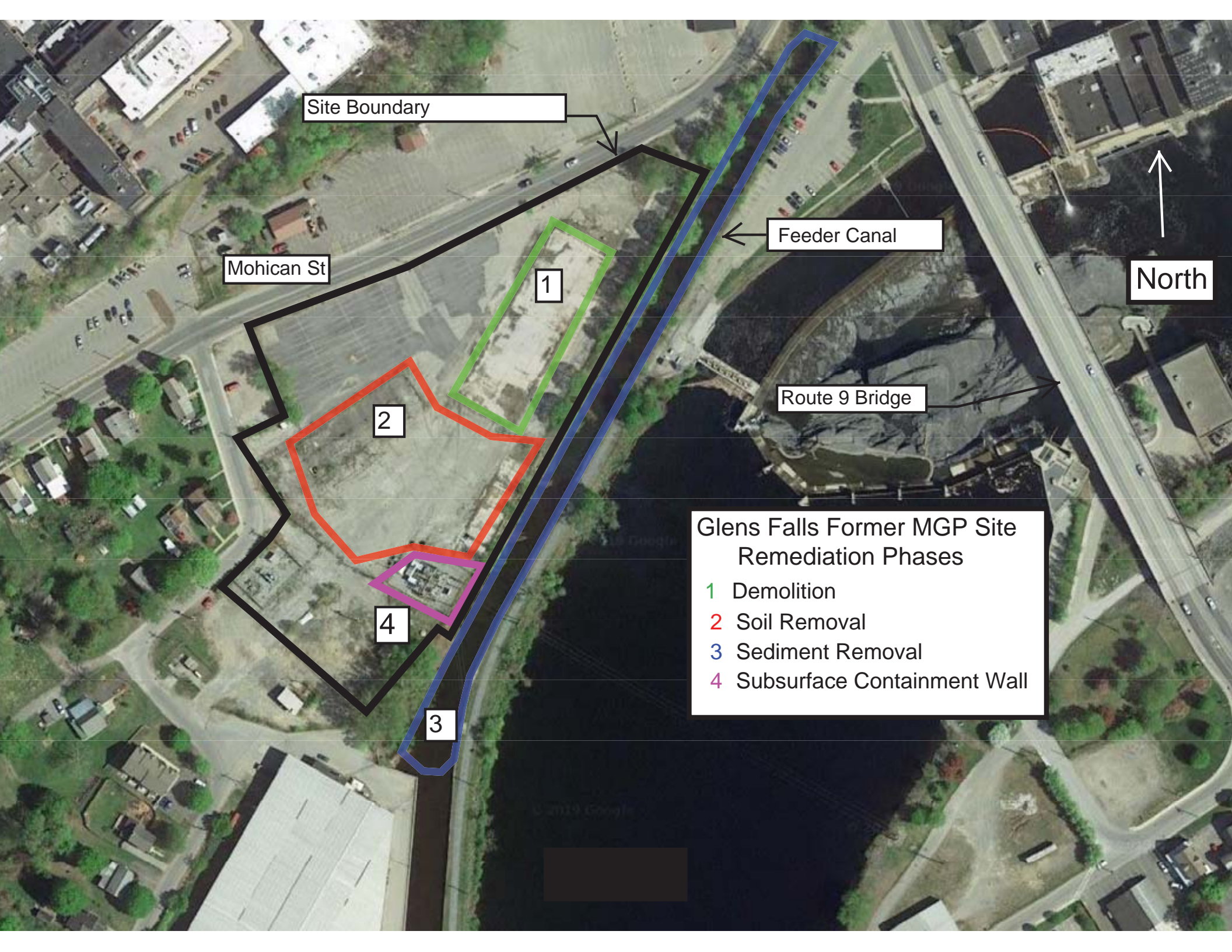
Note: Please disregard if you have already signed up and received this fact sheet electronically.



Site Location

Glens Falls Former MGP Site  
Site 557016  
Site Location





Site Boundary

Mohican St

Feeder Canal

North

Route 9 Bridge

### Glens Falls Former MGP Site Remediation Phases

- 1 Demolition
- 2 Soil Removal
- 3 Sediment Removal
- 4 Subsurface Containment Wall