

**FACT SHEET****State Superfund
Program****Receive Site Fact Sheets by *Email*.** See "For More Information" to Learn How.

Site Name: 3456 Oneida Street
DEC Site #: 633049
Address: Bleachery Road
Chadwicks, NY 13319

Have questions?
See
"Who to Contact"
Below

Cleanup Action to Begin at State Superfund Site

Cleanup will be initiated to address the contamination related to the 3456 Oneida Street site ("site") located at Bleachery Road, Chadwicks, Oneida County under New York's State Superfund Program. Please see the maps for the site location.

The site is listed as a Class "2" site in the State Registry of Inactive Hazardous Waste Sites (list of State Superfund sites). A Class 2 site represents a significant threat to public health or the environment; action is required.

Documents related to the cleanup of this site can be found at the location(s) identified below under "Where to Find Information." The cleanup activities will be performed by the NYS Department of Environmental Conservation ("DEC").

Highlights of the Upcoming Cleanup Activities

The goal of the cleanup action for the site is to achieve cleanup levels that protect public health and the environment. The cleanup action for the site includes:

The removal of construction and demolition (C&D) debris piles and other on-site waste material; excavation of soil contamination along upland areas of the Site and the banks of Sauquoit Creek, and soil/sediment in the unnamed tributary; proper off-site disposal of contaminated soil/sediment; backfill and compaction of completed excavations and restoration of the creek bank, unnamed tributary, and upland areas of the Site.

Additional Details

Engineering design of the cleanup remedy was completed by the DEC in December 2013. Bids for the cleanup contract were opened in January 2014. Land Remediation, Inc. was awarded the contract and given formal notice to proceed with the project on June 29 2014.

It is anticipated that construction of the remedy will be completed in Summer 2015 at a cost of approximately \$5,600,000. All construction work will be performed under full-time oversight by MACTEC Engineering and Consulting P.C., the engineering consultant hired by the DEC. In addition, the contractor's Health and Safety Plan for the work was reviewed to ensure that onsite workers and the nearby community is protected during these activities.

A copy of that plan has been placed into the document repositories identified below.

During cleanup activities, all truck traffic to and from the site associated with excavation and off-site disposal activities are being limited to non-residential areas as much as possible. Furthermore, the contractor is responsible for keeping the transportation route clean of soil and fill materials generated during site cleanup activities.

Next Steps

After completion of the cleanup activities, the DEC will prepare a Final Engineering Report. The Final Engineering Report will describe the cleanup activities completed and certify that cleanup requirements have been achieved or will be achieved.

The DEC will keep the public informed throughout the cleanup of the site.

Background

Location: The 3456 Oneida Street Site is located adjacent to the Sauquoit Creek in the Village of Chadwicks, Town of New Hartford, Oneida County, New York. The Site is located in a suburban area. The Site is comprised of an irregularly shaped 4.61 acre parcel of vacant commercial property immediately south of the former Willowvale Bleachery.

Site Features: The Site is currently vacant, a pole building and several temporary structures which are present on historical aerial photographs of the site have been removed in the last 15 years. The site is accessed from Oneida Street to the northwest by way of a private driveway that includes a steel deck bridge over the Sauquoit Creek. The Site is generally level except for several areas of construction and demolition (C&D) disposal mostly on the southern portion of the site, and a steep bank of the Sauquoit Creek which runs along the western boundary of the site.

Current Zoning/Use: The Site is currently inactive, and is zoned for commercial use. The site is surrounded by residential, commercial and industrial development. The Site is bounded to the north by commercial and industrial businesses that occupy the former Willowvale Bleachery, to the east by an active rail line, to the south by a private residence and to the west by the Sauquoit Creek.

Historical Use: Starting around 1880, the 3456 Oneida Street Site was part of the former Willowvale Bleachery property although the Site was never developed as part of the bleachery. The bleachery operated until 1952. In 1955 the Site was purchased by the John Weeks Erecting Company. The northwest corner of the Site was part of a mill pond until around 1955 when the mill pond was filled in. The John Weeks Erecting Company conducted heavy millwright work and steel rigging activities at the Site until approximately 1979, when the Site was sold to Thomas (Sr.) and Rita Madden. The heavy millwright work and steel rigging activities continued into the early 1990's under the name of Central Steel Erecting Company. In 1994, following the closure of Central Steel Erecting Company, the Site itself was subdivided from the remaining portions of the former Willowvale Bleachery. The Site was subsequently transferred to Thomas J. Madden Jr., who in 2004 sold the Site to Valley Used Steel, Llc. Throughout its history the Site has generally been used for intermittent equipment storage and associated temporary structures. Currently all structures have been removed from the Site.

Starting circa 1980, the site was reportedly used for cleaning of industrial machines containing PCB oils as well as unconfirmed discharge and dumping of fluids containing PCBs to the ground surface and Unnamed Tributary. Runoff generated from on-site cleaning activities discharged to a new on-site Mill Pond which was developed after 1957 and filled in 1988. During the time the Site was occupied by John Weeks Erecting Company and/or Central Steel Erecting it was reportedly also used for refuse disposal and landfilling which may have included pails and drums. The Site has also been used for C&D debris disposal which is evident by visual observation.

Throughout the mid-1990's the DEC's Division of Fish & Wildlife (DFW) conducted several studies to evaluate the source of PCB impacts observed in fish in the Sauquoit Creek. The studies identified the Unnamed Tributary at the southern edge of the 3456 Oneida Street Site as a source of PCBs to the Sauquoit Creek. In November 2001 the Department conducted a Preliminary Site Assessment (PSA). The PSA confirmed the presence of hazardous waste at the Site based on concentrations of PCBs found in surface soils and sediments.

As a result of identified hazardous waste disposal, the Department listed the site as a Class 2 site in the Registry of Inactive Hazardous Waste Disposal Sites in New York in March 2002. An Interim Remedial Measure (IRM) was completed in December 2007 which removed an easily accessible area of PCB contaminated soil from the central portion of the site. A Remedial Investigation (RI) was completed by the Department under the state Superfund program in November 2008. The Record of Decision was issued on 3/31/2010.

Site Geology and Hydrogeology: It appears the site was historically a topographically low-lying area and that fill material was placed to accommodate commercial activities. The fill material is heterogeneous and contains soils ranging from clays to sands and gravels as well as C&D debris. Glacial till underlays the fill material at depths of approximately four to eight feet. Bedrock is present at depths of eight to twelve feet.

The primary surface water feature at the Site is Sauquoit Creek, which flows northerly and acts as the western boundary of the Site. From a wetlands area east of the Site, an Unnamed Tributary runs across the southern portion of the site from east to west and empties into Sauquoit Creek. A seasonally wet unnamed drainage ditch runs parallel to where the pole building use to be and then cuts west across the Site, draining into the Sauquoit Creek. Sauquoit Creek likely acts as the local discharge area for groundwater at and in the vicinity of the Site. Groundwater is present at the Site in the overburden aquifer at depths of one to eight feet. Groundwater flows west across the Site toward the Sauquoit Creek, and groundwater flow in the immediate vicinity of the Unnamed Tributary appears to be influenced by the Unnamed Tributary.

Additional site details, including environmental and health assessment summaries, are available on DEC's website at:

<http://www.dec.ny.gov/cfm/external/derexternal/haz/details.cfm?pageid=3&progno=633049>

State Superfund Program: New York's State Superfund Program (SSF) identifies and characterizes suspected inactive hazardous waste disposal sites. Sites that pose a significant threat to public health and/or the environment go through a process of investigation, evaluation, cleanup and monitoring.

DEC attempts to identify parties responsible for site contamination and require cleanup before committing State funds.

For more information about the SSF, visit: <http://www.dec.ny.gov/chemical/8439.html>

FOR MORE INFORMATION

Where to Find Information

Project documents are available at the following location(s) to help the public stay informed.

New Hartford Public Library
Attn: Reference Department
2 Library Lane
New Hartford, NY 13413
Phone: (315) 733-1535

Who to Contact

Comments and questions are always welcome and should be directed as follows:

Project Related Questions

David Chiusano
Department of Environmental Conservation
Division of Environmental Remediation
625 Broadway
Albany, NY 12233-7017
518-402-9795
djchiusa@gw.dec.state.ny.us

Site-Related Health Questions

Greg Rys
New York State Department of Health
NYSDOH Field Office 5665 State Route 5
Herkimer, NY 13350
(315) 866-6879
BEEI@health.state.ny.us

We encourage you to share this fact sheet with neighbors and tenants, and/or post this fact sheet in a prominent area of your building for others to see.

Receive Site Fact Sheets by Email

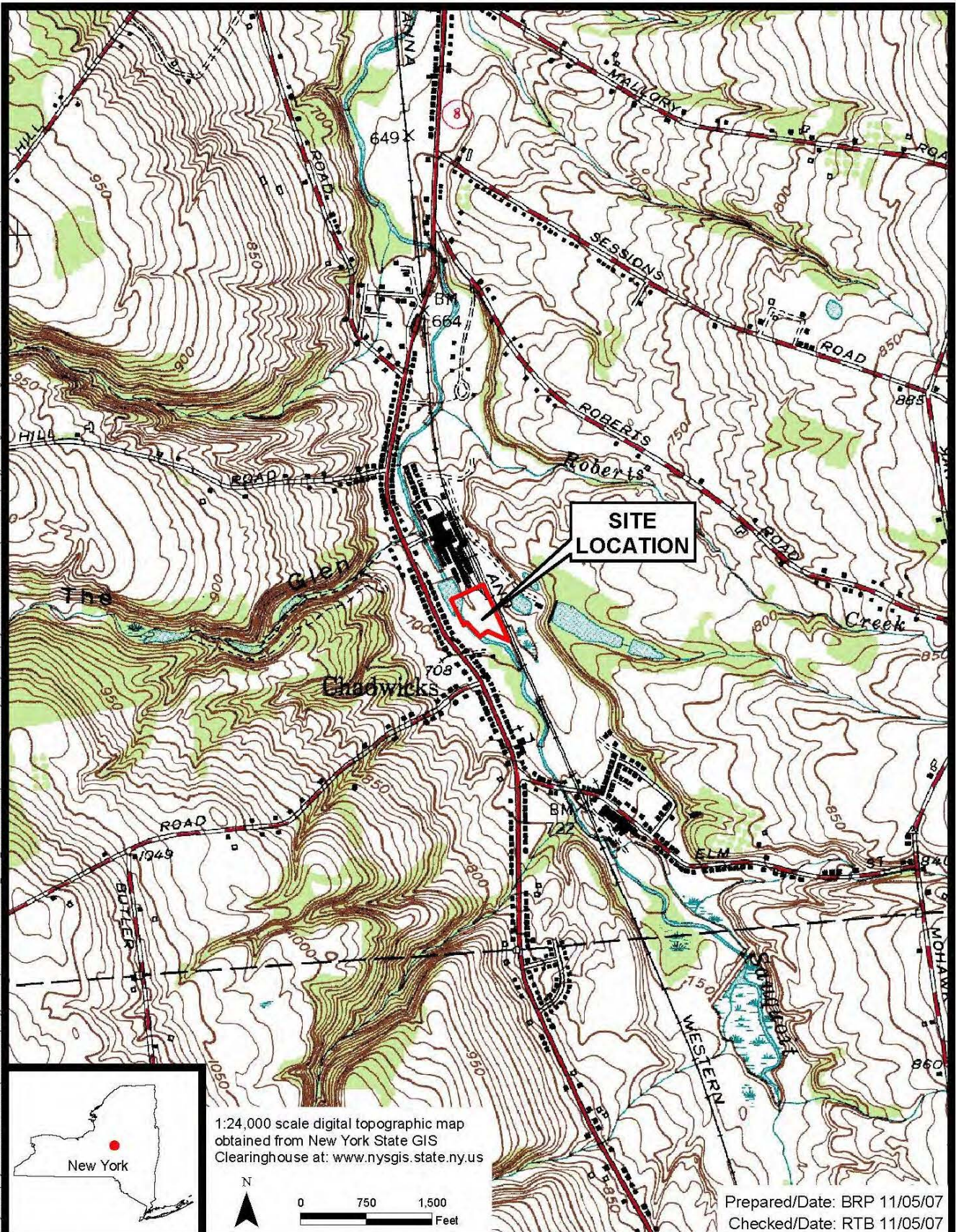
Have site information such as this fact sheet sent right to your email inbox.

DEC invites you to sign up with one or more contaminated sites county email listservs available at the following web page:
<http://www.dec.ny.gov/chemical/61092.html>. It's quick, it's free, and it will help keep you *better informed*.

As a listserv member, you will periodically receive site-related information/announcements for all contaminated sites in the county(ies) you select.

Note: Please disregard if you already have signed up and received this fact sheet electronically.

Document: P:\Projects\NYSDEC\Projects\3456 Oneida St. (Madden Property)\GIS\MapDocuments\OneidaSt_3456_SiteLocationMap.mxd PDF: P:\Projects\NYSDEC\Projects\3456 Oneida St. (Madden Property)\GIS\Figures\NYSDEC\Figure2.1.pdf 11/05/2007 12:01 PM bpreters

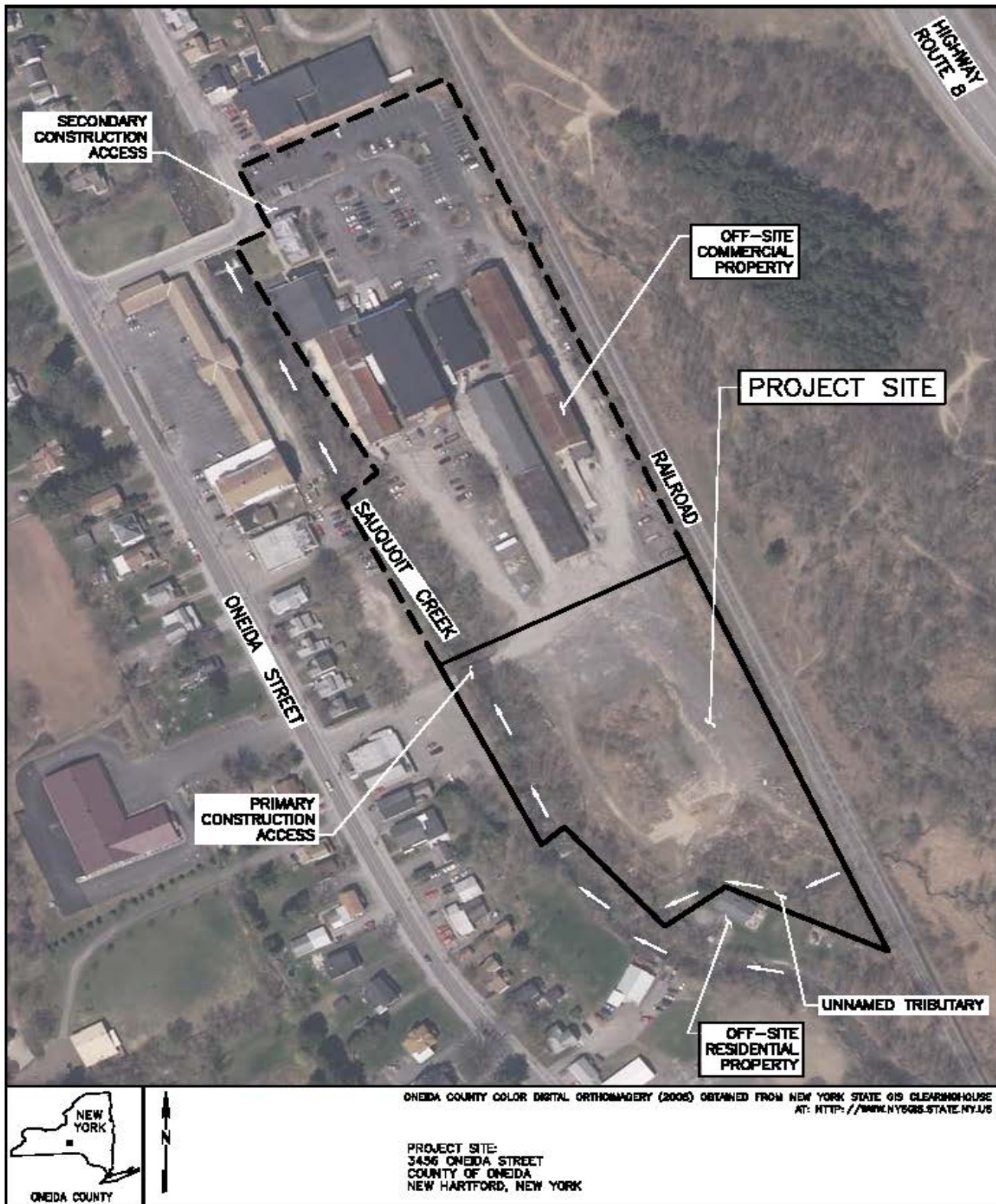


NYSDEC
3456 Oneida Street
New Hartford, NY



Site Location
Project 3612-11-2186
Figure 1

Prepared/Date: BRP 11/05/07
Checked/Date: RTB 11/05/07



SITE MAP

