

Vestal Water Supply Site 1-1

Site visit to discuss rehabilitation of the Vestal water supply well, 9/30/2008

Photos with Notes

Photo

Description



Personnel onsite at Vestal. From the left: Dick Green, ECI; Payson Long, DEC; Jeremy Wycoff, Malcolm Pirnie; Steve, Subsurface Technologies.



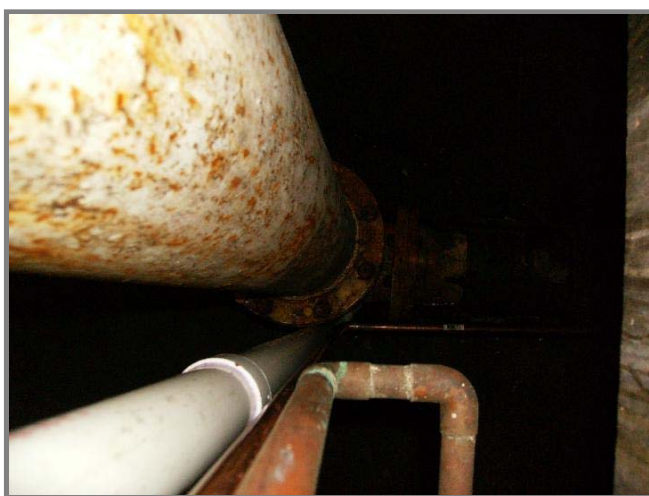
Jeremy, left; Steve, right.



Maker's plate on the electric motor behind Jeremy and Steve in the previous shot.



Well in the building.



View down the hole along side the pipes in the previous shot



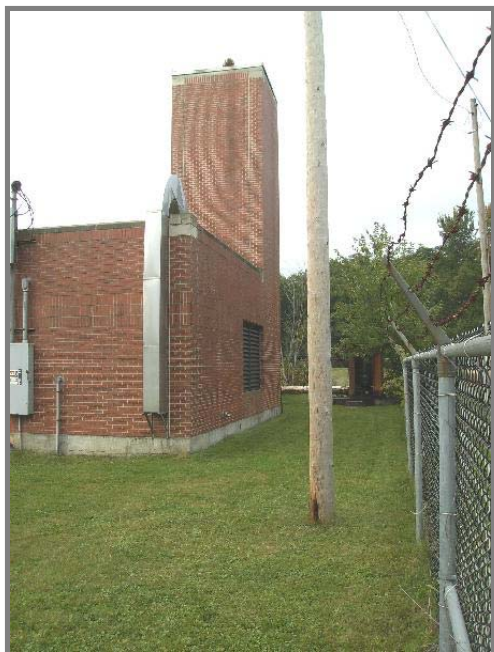
The next six pictures are of the normal access to the well house. The last three pictures show the back corner area where we suggest a ramped access road and vehicle gate be added.



Access



Access



Access



Access



Front gate access



Access ramp would begin in the corner of the parking area here.



Ramp area



Ramp area



Ramp area