

December 8, 2005

Mr. John Glass  
Restoration Team Chief  
AFCEE/ISM  
3300 Sidney Brooks  
Brooks City-Base, TX 78235-5112

**Reference:** Contract No. F46124-03-D-8597, Delivery Order No. 0103

**Subject:** Manufacturing Building East Basement Soil Excavation, Air Force Plant 59 (AFP 59), Johnson City, NY

Dear Mr. Glass:

This letter report has been prepared to summarize the results of the July 2005 soil excavation activities in the East Basement of the Manufacturing Building at AFP 59. The soil excavation was recommended in the Manufacturing Building Basement Screening Level Characterization and Contaminant Delineation letter report addressed to your attention and dated January 14, 2005. The excavation activities were designed to remove soil containing trichloroethene (TCE) from the soil pile located against the western wall of the East Basement (see Figure 1).

## **1.0 SUMMARY OF EXISTING INFORMATION**

### **1.1 East Basement Description**

The East Basement dimensions are approximately 300 feet (north to south) by 70 feet (east to west), and the average overhead clearance is approximately 8 feet. A grid of brick and concrete columns (10-foot by 10-foot spacing) supports the main floor of the plant, and there is a concrete wall around the perimeter of the basement. There are several vents located along the eastern wall, and there is a ventilation system designed to move air in the basement. The basement is currently used to store scrap material, and it has an unfinished dirt floor throughout. There is one access point on the southeast end of the basement (with concrete stairs).

The floor of the basement consists of packed, brown silty clay soil with pebbles. Elevation varies across its 300-foot length, and two soil piles are located along the western wall. Prior to excavation activities, the largest soil pile began approximately 12 feet from the southern basement wall and extended to the north along the western wall for approximately 143 feet (the excavation activities took place along this pile). The soil pile had a general width of approximately 8 to 10 feet, with an average thickness of 3 to 4 feet. The soil has a darker color than the basement floor soil, and is slightly moist, sandy clay with pebbles and cobbles throughout its thickness. Attachment 1 provides photographs of the East Basement during excavation activities.

A second soil pile begins approximately 173 feet from the southern basement wall and extends to the north along the western wall approximately 30 feet. This soil pile has a general width of approximately 8 to 10 feet, with an average thickness of approximately 3 feet. Its composition is a fine, dry, black soil with pebbles and cobbles throughout its thickness.

## **1.2 Soil Characterization Results**

Two soil investigations have been conducted in the East Basement of the Manufacturing Building at AFP 59 to characterize the nature and extent of soil contamination: an initial soil screening investigation by BAE Control Systems (BAE) between August 2002 and April 2003, and a soil investigation by Earth Tech in November 2004. Figure 1 shows the layout of the soil piles within the basement, the sample locations, and the analytical results for each location.

### **1.2.1 2002 – 2003 Soil Investigation by BAE**

In August 2002, BAE collected three soil samples spaced evenly across the basement floor in an attempt to determine the presence of contaminated soil. The three samples, each collected at approximately ground surface to six inches below ground surface (bgs), were analyzed for volatile organic compounds (VOCs) by U. S. Environmental Protection Agency (USEPA) Method SW8021, semivolatile organic compounds (SVOCs) by USEPA Method SW8270, Target Analyte List (TAL) metals, and polychlorinated biphenyls (PCBs) by USEPA Method SW8082. One soil sample, East Basement 1 (EB-1), collected along the southern portion of the soil pile adjacent to the concrete wall, contained TCE at 0.005 milligrams per kilogram (mg/Kg). Other VOCs were not detected at soil sample locations EB-1, EB-2, or EB-3.

Based on the TCE detection at EB-1, BAE collected additional soil samples at 13 locations in the area of EB-1 between January and April 2003. These soil samples were collected at depths of ground surface to six inches bgs, three feet bgs, and six feet bgs. Each soil sample was analyzed for VOCs by USEPA Method SW8021 and mercury.

At the 13 locations, TCE detections ranged from 0.72 to 48 mg/Kg, methylene chloride detections ranged from 0.14 to 7.2 mg/Kg, 1,1-dichloroethane (1,1-DCA) detections ranged from 0.85 to 24.0 mg/Kg, and 1,1,1-trichloroethane (1,1,1-TCA) detections ranged from 0.191 to 5.7 mg/Kg. The following compounds were only detected once: tetrachloroethene at 1.4 mg/Kg, toluene at 5.6 mg/Kg, m- & p-xylenes at 9.9 mg/Kg, and o-xylene at 2.5 mg/Kg. TCE, 1,1-DCA, 1,1,1-TCA, and methylene chloride detections exceeded the New York Department of Environmental Conservation (NYSDEC) Technical and Administrative Guidance Memorandum (TAGM) #4046 soil cleanup goals for these contaminants (see Table 1 and Figure 1).

**Table 1. Recommended Soil Cleanup Goals (per TAGM #4046)**

Compound	Goal (mg/Kg)	Compound	Goal (mg/Kg)
1,1,1-Trichloroethane	0.8	Chloroform	0.3
Trichloroethene	0.7	1,1-Dichloroethane	0.2
Tetrachloroethene	1.4	1,2,3-Trichlorobenzene	N/A
Toluene	1.5	1,4-Dichlorobenzene	8.5
m-xylene & p-xylene	1.2	Naphthalene	13.0
Methylene Chloride	0.1	Carbon Tetrachloride	0.6

N/A = Not applicable; no standard

### **1.2.2 2004 Soil Investigation by Earth Tech**

Earth Tech conducted a soil investigation in the East Basement between November 3 and 4, 2004 as a follow up to BAE initial sampling efforts in 2002 and 2003. Eighteen soil sample locations were flagged within the soil piles and immediately east of the piles along the length of the west wall of the East Basement. Eighteen soil samples were collected using Encore® samplers from the ground surface to one foot bgs at each location. A two- or four-inch stainless steel hand auger was then used to advance each hole to auger refusal (approximately six feet below the basement floor). Upon reaching auger refusal, a second soil sample was collected from the auger using Encore® samplers. Groundwater was not encountered during the sampling activity.

In addition to the soil samples collected from the East Basement, soil samples were collected west of the East Basement's western wall at three locations (DP1, DP2, and DP3) using direct push technology on November 3, 2004 (see Figure 1), with the goal being to define contamination on the other side of the basement wall. The direct push rig was set up on the main floor of the Manufacturing Building and the three holes were punched through the floor. The results from the direct push samples are presented in the January 14, 2005 letter report and Figure 1.

All soil samples were analyzed by Kemron Environmental Services for VOCs by USEPA Method SW8260.

1,1,1-TCA, carbon tetrachloride, TCE, and chloroform were detected at the six-foot interval at soil sample location EB1-S20, ranging from 0.0008 J mg/Kg (chloroform) to 0.0809 J mg/Kg (TCE). Each of these detections was below the NYSDEC TAGM #4046 cleanup goals. At the three-foot interval at EB1-S20 (collected because a black, tar-like layer was encountered), carbon tetrachloride was detected at 0.614 J mg/Kg, 1,1,1-TCA was detected at 1.69 mg/Kg, and TCE was detected at 4.24 mg/Kg. The 1,1,1-TCA and TCE detections exceeded the TAGM #4046 cleanup goals of 0.8 mg/Kg and 0.7 mg/Kg, respectively, for these contaminants.

TCE and/or 1,1,1-TCA were also detected at soil sample location EB1-N30 (one-foot interval), soil sample location EB1-N110 (six-foot interval), soil sample location EB1-N130 (one-foot interval), soil sample location EB1-N170 (six-foot interval), and soil sample location EB1-N210 (six-foot interval). The maximum TCE and 1,1,1-TCA detections at these locations were 0.050 mg/Kg TCE (soil sample location EB1-N30) and 0.008 J mg/Kg 1,1,1-TCA (soil sample location

EB1-N210). The concentrations were below the TAGM #4046 cleanup goals. Additionally, 1,2,3-trichlorobenzene, 1,4 dichlorobenzene, carbon tetrachloride, and naphthalene were detected at the six-foot interval at soil sample location EB1-N210. These detections ranged from 0.0006 J mg/Kg (1,2,3-trichlorobenzene) to 0.0011 J (carbon tetrachloride), and were below the TAGM #4046 cleanup goals.

No VOCs were detected at any of the sample locations placed immediately east of the piles (see Figure 1).

Based on the findings of the soil investigations conducted between 2002 and 2004, the January 14, 2005 letter report recommended excavating 78.3 linear feet of the soil pile from an area immediately north of EB1-N30 to the south until the black tar-like substance observed near EB1-S20 was no longer encountered. The proposed area of excavation is highlighted in Figure 1 by cross-hatching.

## **2.0 PROJECT ACTIVITIES**

The following tasks were completed during the execution of this delivery order:

1. Structural assessment of the building (based on a site visit and As-Built drawings) to address the impact to the foundation and support columns during excavation.
2. Project initiation, including removing the basement stairwell to allow access for equipment, setting up a ventilation system, providing proper lighting, and moving the sprinkler system.
3. Excavation of 119 cubic yards (along 78.3 linear feet of the soil pile) of TCE-contaminated soil from the East Basement of the Manufacturing Building at AFP 59.
4. Characterization, transportation, and disposal of all waste generated at the site to the Broome County Landfill.
5. Backfilling the excavated area with clean fill and compaction of the fill.
6. Site restoration, including rebuilding the basement stairwell at the completion of excavation/backfilling activities.

### **2.1 Structural Assessment of the Building**

An Earth Tech structural engineer conducted a structural analysis of the concrete wall and brick columns around which the soil excavation took place. The following summarizes the findings of the analysis.

The stability of the retaining wall is dependent on the supported soil properties. Precise geotechnical engineering information was not available for this analysis. Therefore, the analysis assumed typical values based on a visual classification.

Soil friction angle of 40.5 degrees

At rest Earth Pressure Coefficient  $K_0 = .35$

Friction between footing and supporting soil,  $u = 37\%$

Soil unit weight of 120 lbs/ft<sup>3</sup>

Live load surcharge of 150 psf  
No passive pressure at toe

Factor of Safety against overturning is 2.28  
Factor of Safety against sliding is 1.02  
Maximum bearing pressure is 1.64 tsf

With passive toe fill  
 $K_p = 4$  with soil friction angle of 37 degrees

**Conclusions.** If a clean fine sand or silty/clayey fine to medium sand is supporting the wall, a friction coefficient of 37% can be assumed. Additionally, if a medium dense sand or gravel is supported by the wall, the internal friction of 40.5 degrees is typical with the corresponding at rest lateral pressure coefficient of 0.35. For the temporary condition a sliding factor of safety greater than unity should be sufficient when selectively removing backfill in the phases. The factor of safety for sliding should be 1.5 for a permanent structure on granular material. Permanent toe fill will be required to mobilize passive soil pressures and achieve a desirable sliding factor of safety. The height of properly compacted granular toe fill should be a minimum of 2'0" above the bottom of the footing.

The brace provided from the floor system, the dead load weight of the floor system on the wall, and the dead load weight of the roof system on the wall were not considered in the analysis. Incorporating the effects of the brace, the dead load floor weight, and the dead load roof weight would increase the safety of the wall.

Vehicular forklift operations in the vicinity of the wall system should be terminated until the toe fill is properly re-established.

At the completion of the soil excavation and backfilling activities, the final grade met the permanent toe fill requirement of 2 feet above the bottom of the footings.

## **2.2 Project Execution**

Project execution began on July 06, 2005, with Earth Tech field personnel meeting with the Boland's Excavation and Topsoil Project Superintendent on site to discuss project logistics. After a brief walk through of the basement, Boland's hung plastic sheeting (vertically from ceiling to floor and horizontally along the ceiling) to properly enclose the work area. Temporary lighting was hung in the work area and from the entrance of the basement into the work area. Two industrial fans (provided by Boland's) and two negative air units (provided by BAE) were strategically placed within the work area to provide adequate ventilation (in conjunction with BAE's permanent ventilation system located in the northern end of the basement). A temporary portable electrical panel was provided by BAE to operate the additional ventilation system and lighting. Also, sections of the sprinkler system had to be disconnected and moved to allow the equipment and personnel to move freely.

The large aluminum vault doors covering the basement entrance were removed so the stairs could be safely removed. The stairs were broken up by a jackhammer and removed with a backhoe. A small section of asphalt was removed in front of the existing stairs, and a ramp was then created with clean fill to allow the equipment access into the basement work area. Due to the threat of heavy rains in the area, a tarped enclosure was built over the entrance opening. All utilities were cleared by BAE personnel before any excavation was performed in the basement.

The excavation of the 80-foot-long by 9-foot-wide soil pile began on July 7, 2005. Boland's crew brought in two mini bobcats (walk behind models) and one mini excavator for the soil excavation part of the project. The entire 80-foot length of the pile out to the edge of the brick columns was removed to grade initially (see Figure 2). Then, starting at the southern wall and working north, the soil was excavated to final depth in two 30-foot sections and one 20-foot section (for structural reasons). Each of the sections was excavated down to approximately 2 feet below the top of the brick column footers (see Figure 2 and Figure 3). The soil was then replaced in 12-inch lifts with a clean, clayey/sandy silt and compacted with a 1-ton vibratory roller. Three lifts were necessary for each section to achieve a final grade that was 1) slightly higher than the existing basement grade, and 2) sloped gently down from the western wall to the east. The clean fill used for replacement was very similar to the existing basement floor.

The excavated soil was dumped at the basement entrance (where the stairs were formerly located) and then loaded directly into dump trucks using the backhoe. The soil was then either sent off site immediately (if during landfill business hours) or held until the landfill was open. No staging area was required. All of the soil was transported to Broome County Landfill where the soil had already been profiled and approved for disposal (waste manifests are provided in Attachment 2). Boland's crew removed 119 cubic yards of soil and used 86 cubic yards of clean fill to replace it.

The excavation and soil replacement was complete on July 9, 2005. On July 10, 2005 all heavy equipment was removed from the East Basement, and the entrance area was cleaned out and a new concrete pad was poured. A set of pre-cast stairs were then brought in with BAE approval and set on top of the new concrete pad (see Attachment 1 for photographs of the operation). The area just east of the stairs was regraded and new asphalt was laid down. The large aluminum vault doors were then reset. All of the temporary lighting, remaining fans, and negative air units were removed. The project was completed on July 13, 2005.

### **3.0 CONCLUSIONS AND RECOMMENDATIONS**

The East Basement soil excavation removed all of the known contamination above TAGM limits in basement soils except for the TCE (48 mg/Kg) identified at 6 feet bgs at sample location EB1-E20-N5 between columns 20 and 21 (see Figure 1, Figure 2, and Figure 3). The contaminated soil at this location and depth was not removed due to structural concerns (i.e., undermining the structural columns and wall). However, the lateral extent of this contamination is limited, and the contamination is now covered with clean, compacted backfill.

In order to monitor the potential impact to groundwater quality as a result of the soil excavation activities, Earth Tech collected groundwater samples from six monitoring wells during the week of October 24, 2005. The same wells that were sampled as part of the AFP 59 5-year groundwater monitoring program were sampled, and analytical data will be provided in a future report. Earth Tech recommends that one additional round of monitoring be performed in November 2006 to ensure that groundwater quality has not been adversely impacted.

If you have any questions or comments, please call me at (703) 706-0508.

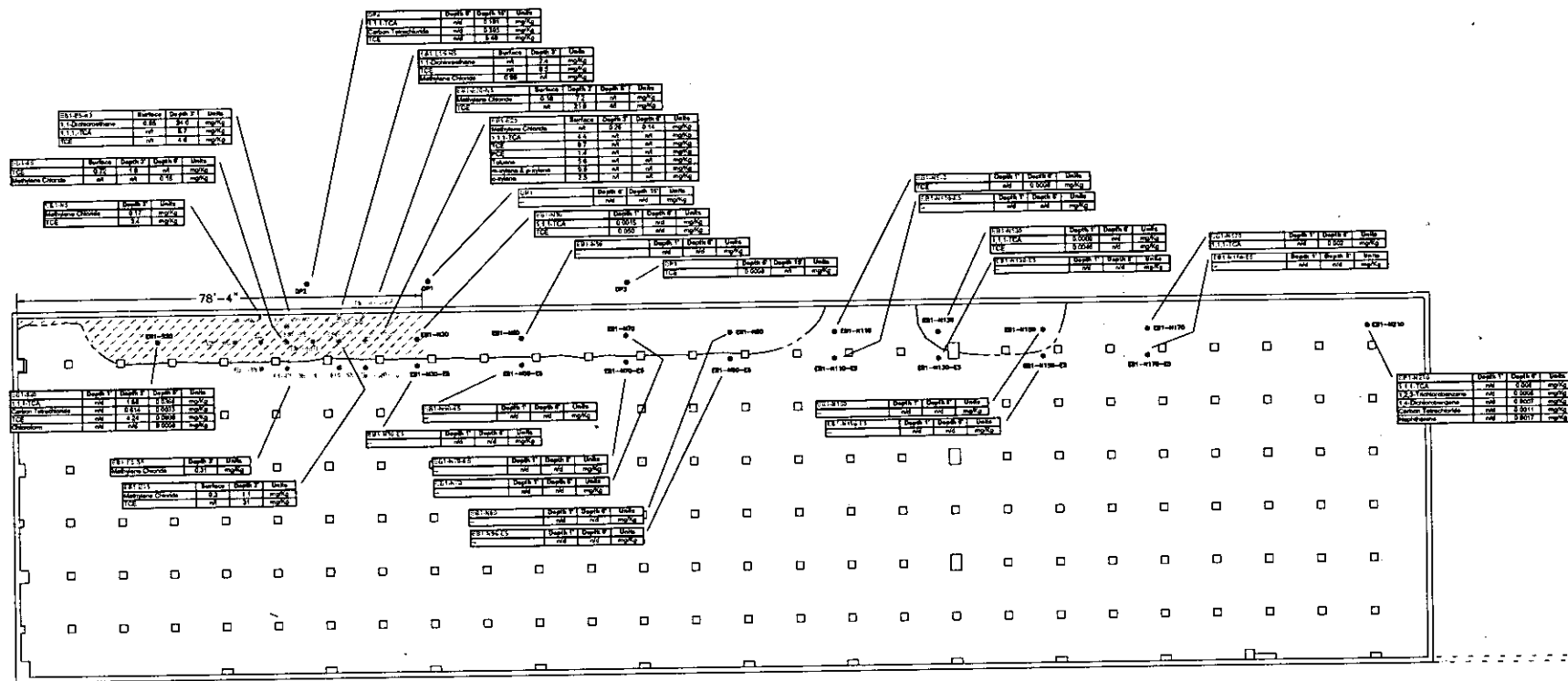
Sincerely,

Earth Tech, Inc.

Dave Parse  
Project Manager

Enclosures

cc: Mr. John Doepker, ASC IPTC  
Mr. Jim Lister, NYSDEC  
Mr. Doug Garner, BAE Control Systems  
Mr. Everett Kline, ACO (w/o enclosures)



#### NOTES:

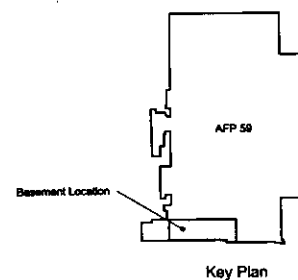
Although they may NOT exceed contamination limits, all sampling results are shown; exceedances are highlighted in yellow.

#### CONTAMINATION LIMITS:

Contaminant	Limit (mg/kg)
Lead	250
Cadmium	10
Chromium (VI)	10
Chromium (III)	100
Chlorine	100
Chlorine Dioxide	100
Chlorine Gas	100
Chlorine Oxide	100
Chlorine Peroxide	100
Chlorine Trioxide	100
Chlorine Tetraoxide	100
Chlorine Pentafluoride	100
Chlorine Hexafluoride	100
Chlorine Heptafluoride	100
Chlorine Octafluoride	100
Chlorine Nonafluoride	100
Chlorine Decafluoride	100

#### LEGEND:

- DIRECT PUSH SAMPLE LOCATION (from 1st floor) BY EARTH TECH
- HAND AUGER SAMPLE LOCATION BY EARTH TECH
- PREVIOUS HAND AUGER SAMPLE LOCATION BY S&B
- SAMPLED SOIL PILE
- /// AREA OF SOIL EXCEEDING TQM LEVELS TO BE REMOVED
- ND NON-DETECT
- NT NO SAMPLE TAKEN



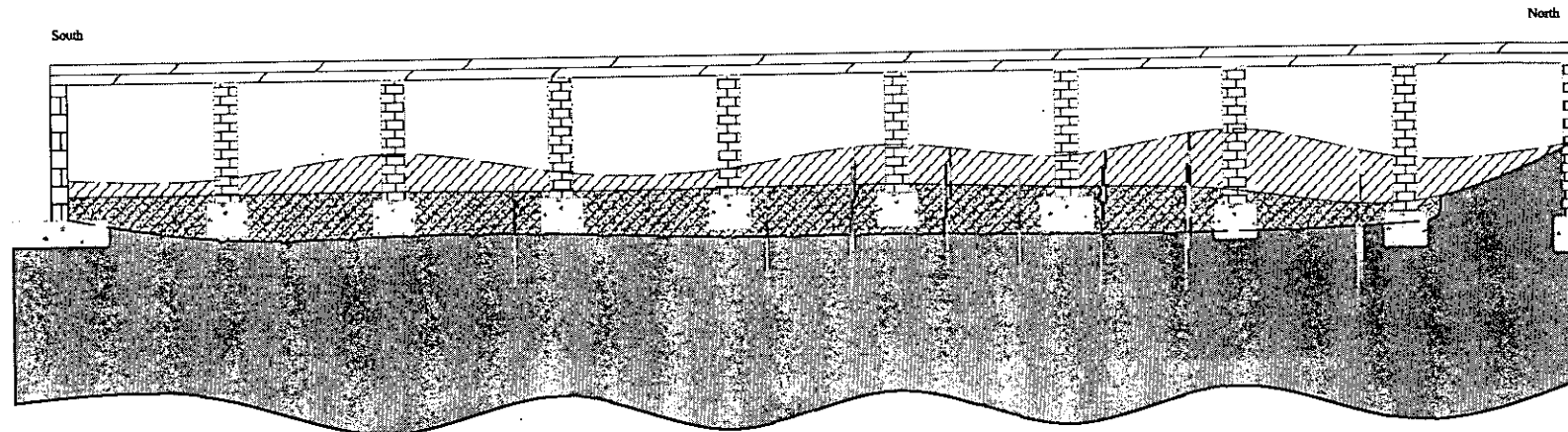
AFP-58 Johnson City, New York

Figure 1  
East Basement Soil Contamination

APPROVED BY: P. Grogan  
DATE: 12-27-04  
DRAWN BY: J. Smith  
SCALE: 1" = 10'

625 North Washington Street, Suite 200, Alexandria, Virginia 22314  
Telephone 703.549.8728





# LEGEND

- Soil Boring (Sample not collected)
- Soil Boring Sampling Interval Below TAGM
- Soil Boring Sampling Interval Exceeding TAGM
- Existing Top of Soil Pile
- Original Top of Soil Pile
- Limits of Soil Pile Excavation
- Unexcavated Basement Subfloor
- Excavated Soil Pile Area
- Excavation Backfill Material Area
- Timber Joist
- Column
- Wall
- Footer

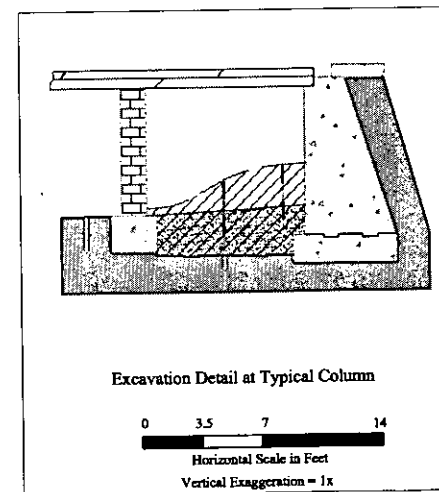
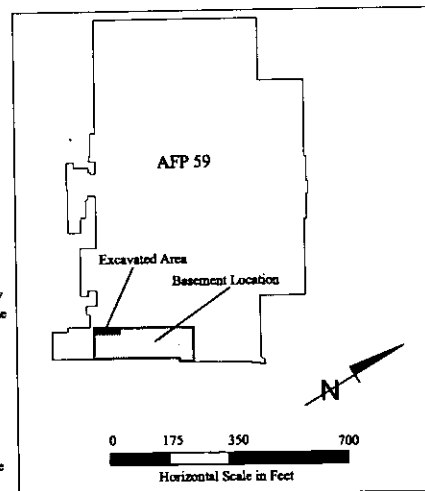
0 3.5 7 14  
Horizontal Scale in Feet  
Vertical Exaggeration = 1x

## NOTES:

-Soil boring locations in the profile view are offset to show the sampled intervals. The approximate depth shown in the profile view is based on field measurements. Refer to the detail view for a more accurate depiction of the soil boring locations.

-For the contaminant concentrations detected in each soil boring, refer to Figure 1.

-The soil pile elevations represented in the profile view are taken from the top of the soil pile against the wall.



AIR FORCE PLANT 59 INTERIM REMEDIAL ACTION



A Tyco International Ltd. Company  
675 N. Washington Street, Suite 300, Alexandria, VA 22314  
Phone: 703.549.9726 Fax: 703.549.9134 earthtech.com

Figure 2  
Soil Pile Excavation Profile  
East Basement  
Johnson City, New York

CONTRACT NO. F41624-03-D-8397	TASK NO. DO 0183
DESIGNED BY W. Gao	DRAWN BY W. Gao
CHECKED BY E. Johnson	DATE Oct 11, 2005
SCALE 1" = 7'	SHEET 1 of 1

See: proj05a.dwg

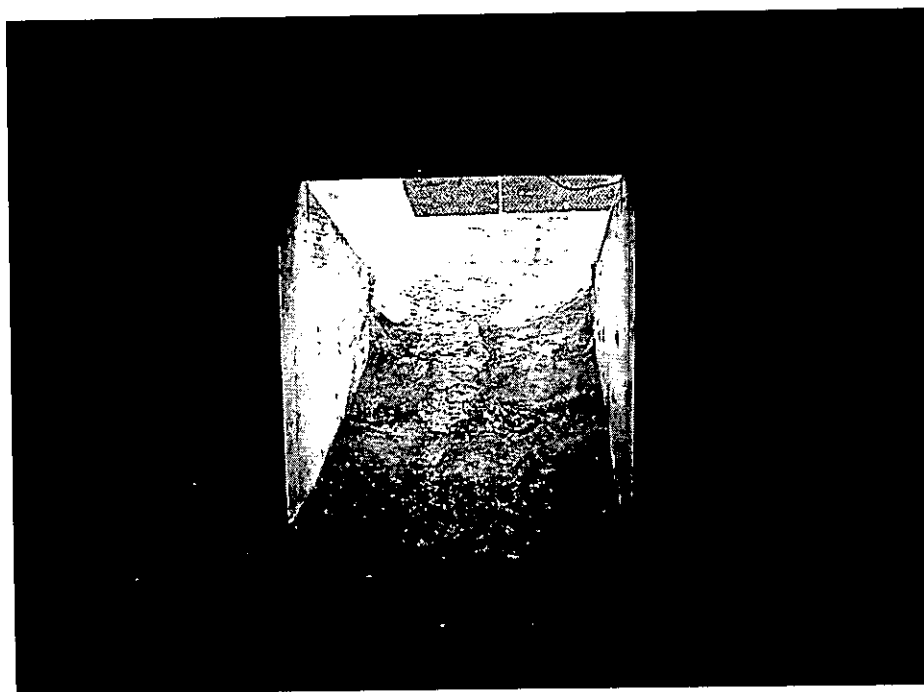


# **Attachment 1**

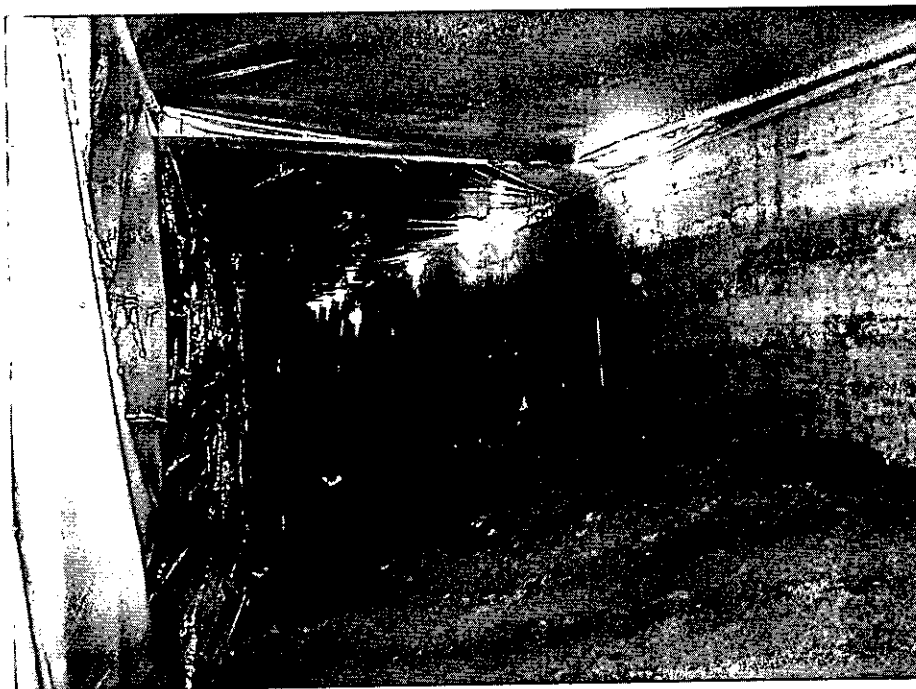
## **Photographs**



Looking east towards basement entrance as stairs are being removed



Looking east towards basement entrance at the ramp created for the equipment



Soil pile looking south along the western basement wall prior to excavation activities



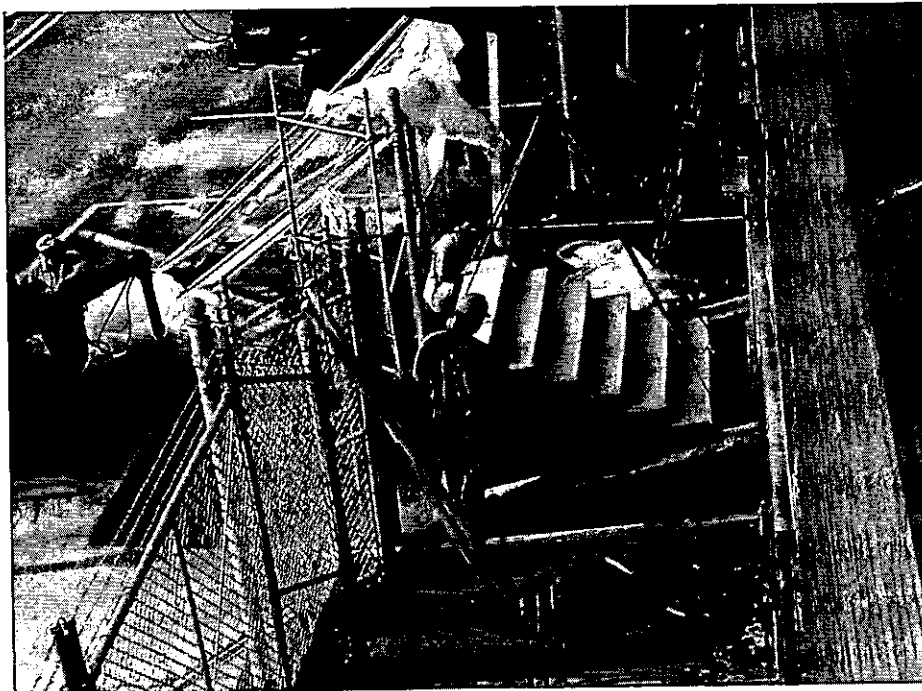
Looking south along the western basement wall following excavation activities



Looking north along the western basement wall following excavation activities



Residual staining along the western basement wall following excavation activities



Setting pre-cast stairs in place at the basement entrance following excavation activities



Looking east at the new concrete pad and pre-cast stairs

## **Attachment 2**

### **Waste Manifests**



Boland's Excavating & Topsoil

Date: 7/18/05 TO 7/11/05

Soil Remediation Log

Project: EARTHTECH (BAE)

Job# 0223

Date	Carrier	Driver	Trailer Lisc. #	Destination	Pickup Time	Est. Weight	Arrival Time	Act. Weight
7/18/05	BOLANDS	CLAUQUE	13	NANTICOOK	AFP59-01	10		8.18
7/19/05		CLAUQUE	13		AFP59-02	10		8.74
↓		PEASE	7		AFP59-03	10		7.94
↓		BILEK	8		AFP59-04			17.14
↓		TIFFANY	41		05			21.81
7/8		PEASE	7		06			9.23
7/8		MILLER	3		07			8.29
		PEASE	7		08			9.07
7/10		TIFFANY	41		09			25.73
7/11		BESTMANN	32		10			23.66
7/11	✓	PEASE	7	↓	✓ 11			9.49
							TOTAL	149.28

\*Broome County Landfill  
\*286 Knapp Road Tel: 607-763-4434

Date : 07/08/2005 SCALE #1  
Time : 01:02PM Ticket #713020

Truck ID: 007212 ROFF/TLR ID:

Customer ID: 0072  
Customer Desc: BOLAND'S EXCAVATING & TOPS  
OIL

Material ID: CS  
Material Desc: CONTAMINATED SOIL

Gross : 31.660LBS  
Tare : 15.300LBS  
Net : 16.360LBS

Total Tons: 8.18 Price/Ton: \$ 27.00

Material Total \$ 220.86  
Miscellaneous \$ 0.00

Please Pay This Amount \$ 220.86

Weighmaster: C15

-Thank You

Original — Negotiable — Domestic

Excavating & Topsoil, Inc. Carrier

of the issue of this Bill of Lading.

in City, NY from AFCEE

Shipper's # AFP-5901  
Agent's No. 7A-555

7/8/05

Nanticoke Landfill

(Mail or street address of consignee - For purposes of notification only.)

inghamton State of NY Zip Code 13905 County of Broome

Delivering Boland's Excavating Vehicle  
AIRPORT RD Carrier & Topsoil, Inc. or Car Initial No. 13

STATE PERMIT PART 364 # 7A-555  
NY LIC # 33837-PA

Street City State

Exceptions	Weight (Sub. to Car.)	Class or Rate	Check Column
AL )	10TN  RECEIVED JUL 08 2005 BROOME COUNTY NANTICOKE LANDFILL		

C. O. D. charge to be paid by Shipper ☐ Consignee ☐

Subject to Section 7 of conditions, if this shipment is to be delivered to the consignee without recourse on the consignor, the consignor shall sign the following statements:  
The carrier shall not make delivery of this shipment without payment of freight and all other lawful charges.

(Signature of Consignor.)

If charges are to be prepaid, write or stamp here, "TO BE PREPAID."

Received \$ to apply to prepayment of the charges on the property described hereon.

Agent or Cashier

Per (the signature here acknowledges only the amount Prepaid.)

Charges Advanced:

\$

If the shipment moves between two ports by a carrier by water, the law requires that the bill of lading shall state whether it is "carrier's or shipper's weight." NOTE - Where the rate is dependent on value, shippers are required to state specifically in writing the agreed or declared value of the property.

The agreed or declared value of the property is hereby specifically stated by the shipper to be not exceeding

ASC/ENV John D. Baepker

Shipper, Per

per [Signature]

Agent, Per [Signature]

Permanent post-office address of shipper.

(This Bill of Lading is to be signed by the shipper and agent of the carrier issuing same.)

Bill of Lading

IG Original—Negotiable—Domestic

Shipper's # **AF59-C**

**Excavating & Topsoil, Inc.** Carrier

Agent's No. **7A-555**

of the issue of this Bill of Lading.

**in City, NY** from **AFCEE**

**7/9/2005**

I package is having raised, consigned and delivered as shown below, which said company the word company being understood throughout the contract is meaning any person or corporation in possession own interest, water and, highway route or routes, or within the territory of its highway operators, otherwise to deliver to another carrier on the route to said destination, it is mutually agreed as to each carrier y line established in it or any of said property, that every service to be performed hereunder shall be subject to all the conditions not prohibited by law, whether printed or written, herein contained, including agree

(Mail or street address of consignee - For purposes of notification only.)

**icoke Landfill**

**inghamton** State of **NY** Zip Code **13905** County of **Broome**

City Delivering **Boland's Excavating** Vehicle

**AIRPORT RD** Carrier **& Topsoil, Inc.** or Car Initial No. **13**

**STE PERMIT PART 364 # 7A-555**

C. O. D. charge to be paid by { Shipper ☐ Consignee ☐

Street City State

nd Exceptions	Weight (Sub. to Car.)	Class or Rate	Check Column
<b>SOIL</b>	<b>10TN</b>		

Subject to Section 7 of conditions, if this shipment is to be delivered to the consignee without recourse on the consignor, the consignor shall sign the following statements:  
The carrier shall not make delivery of this shipment without payment of freight and all other lawful charges.

(Signature of Consignor.)

If charges are to be prepaid, write or stamp here, "TO BE PREPAID."

Received \$ to apply to prepayment of the charges on the property described hereon.

Agent or Cashier

Per (the signature here acknowledges only the amount Prepaid.)

Charges Advanced:

\$

\*Broome County Landfill  
\*286 Knapp Road Tel: 607-763-4434

Date : 07/09/2005 SCALE #1  
Time : 07:05AM Ticket #713084

Truck ID:007212 ROFF/TLR ID:

Customer ID:0072  
Customer Desc:BOLAND'S EXCAVATING & TOPS  
OIL

Material ID:CS  
Material Desc:CONTAMINATED SOIL

Gross : 32.820LBS

Tare : 15.340LBS

Net : 17.480LBS

Total Tons: 8.74 Price/Ton: \$ 27.00

Material Total \$ 235.98

Miscellaneous \$ 0.00

Please Pay This Amount \$ 235.98

Weighmaster:CIS

-Thank You

If the shipment moves between two ports by a carrier by water, the law requires that the bill of lading shall state whether it is "carrier's or shipper's weight." NOTE - Where the rate is dependent on value, shippers are required to state specifically in writing the agreed or declared value of the property.

The agreed or declared value of the property is hereby specifically stated by the shipper to be not exceeding

ASC/ENV *John N. Wagner*

Shipper, Per

*[Signature]* per

Agent, Per *[Signature]*

Permanent post-office address of shipper.

(This Bill of Lading is to be signed by the shipper and agent of the carrier issuing same.)

**Bill of Lading**

**1**

(607)763-4450

Ticket No : 713091  
Date : 7/9/2005

859-0  
1-555

\*Broome County Landfill  
\*286 Knapp Road Tel: 607-763-4434

Date : 07/09/2005 SCALE #1  
Time : 07:10AM Ticket #713091

Truck ID:007202 ROFF/TLR ID:

Customer ID:0072  
Customer Desc:BOLAND'S EXCAVATING & TOPS  
OIL

Material ID:C  
Material Desc:CONST/DEMO

Gross : 31.140LBS  
Tare : 15.260LBS  
Net : 15.880LBS

Total Tons: 7.94 Price/Ton: \$ 40.00

Material Total \$ 317.60  
Miscellaneous \$ 0.00

Please Pay This Amount \$ 317.60

Order No :

Gross : 31140 Scale 1 In 7:10:13AM  
Tare : 15260 Scale 1 Out 7:24:45AM

Net : 15880 lb  
7.940 tn

Material \$ 317.60  
Delvry \$ 0.00  
Misc \$ 0.00  
Tax \$ 0.00  
Total \$ 317.60

7/09/2005  
You

\$5

any person or corporation in possession  
hereof, it is mutually agreed, as to each carrier  
named or named, herein contained, including

(purposes of notification only.)

City of Broome

No. 7

Shipped by { Shipper ☐  
Consignee ☐

to Section 7 of conditions, if  
ent is to be delivered to the  
without recourse on the con-  
signor shall sign the fol-  
lowing:  
rier shall not make delivery of  
ent without payment of freight  
or lawful charges.

Signature of Consignor.)

es are to be prepaid, write or  
s. "TO BE PREPAID."

\$ \_\_\_\_\_ to apply to  
nt of the charges on the  
described hereon.

Agent or Cashier

Per \_\_\_\_\_  
(the signature here acknowledges only  
the amount Prepaid.)

Charges Advanced:

\$ \_\_\_\_\_

Weighmaster:CIS

-Thank You

"If the shipment moves between two ports by a carrier by water, the law requires that the bill of lading shall state whether it is 'carrier's or shipper's weight.' NOTE - Where the rate is dependent  
on value, shippers are required to state specifically in writing the agreed or declared value of the property.

The agreed or declared value of the property is hereby  
specifically stated by the shipper to be not exceeding

ASC/ENV John A. Dwyer Shipper, Per

Agent, Per BP

Permanent post-office address of shipper.

(This Bill of Lading is to be signed by the shipper and agent of the carrier issuing same.)

Bill of Lading

Broome County Landfill

Ticket No : 713118

7/9/2005

Customer: 0072

Material: CONTAMINATED SOI

Truck ID: 007216

Trailer:

Gross: 59700

Tare: 25420

Net: 34280

17.140 tons

Material \$ 462.78  
Delivery \$ 0.00  
Misc \$ 0.00  
Tax \$ 0.00

Total \$ 462.78

OF LADING Original—Negotiable—Domestic

d's Excavating & Topsoil, Inc. Carrier

effect on the date of the issue of this Bill of Lading.

t., Johnson City, NY from AFCEE

Shipper's #

AF59-01

Agent's No.

7A-555

7/9/05

and condition of contents of packages whenever marked, consigned and destined as shown below, which said company (the word company being understood throughout this contract as meaning any person or corporation in possession of said description, it on its own interest, water land, highway route or routes, or within the territory of its highway operations, otherwise to deliver to another carrier on the route to said destination, it is mutually agreed, as to each carrier and as to each party at any time interested in all or any of said property, that every service to be performed hereunder shall be subject to the conditions not prohibited by law, whether printed or written, herein contained, including those for himself and his assigns.

(Mail or street address of consignee - For purposes of notification only.)

Inty Nanticoke Landfill

Binghamton

City

State of NY

Zip Code 13905

County of Broome

Delivering Boland's Excavating Vehicle  
Carrier & Topsoil, Inc. or Car Initial No. 8

to: WASTE PERMIT PART 364 # 7A-555

C. O. D. charge  
to be paid by

Shipper ☐  
Consignee ☐

- Subject to Section 7 of conditions, if this shipment is to be delivered to the consignee without recourse on the consignor, the consignor shall sign the following statements:  
The carrier shall not make delivery of this shipment without payment of freight and all other lawful charges.

(Signature of Consignor.)

If charges are to be prepaid, write or stamp here, "TO BE PREPAID."

Received \$ to apply to prepayment of the charges on the property described hereon.

Agent or Cashier

Per (the signature here acknowledges only the amount Prepaid.)

Charges Advanced:

\$

The law requires that the bill of lading shall state whether it is "carrier's or shipper's weight." NOTE - Where the rate is dependent on weight, the carrier's weight shall be used or declared value of the property.

value of the property is hereby specifically stated by the shipper to be not exceeding

ASC/ENV

John A. Sawyer

Shipper, Per

Signature of Shipper

Agent, Per

1

Permanent post-office address of shipper.

(This Bill of Lading is to be signed by the shipper and agent of the carrier issuing same.)

Bill of Lading

Broome County Landfill

Ticket No : 713121

7/9/2005

Customer: 0072

Material: CONTAMINATED SOI

Truck ID: 007207

Trailer: 007208

Gross: 77000

Tare: 33380

Net: 43620

21.810 tn

Material \$ 588.87

Delivery \$ 0.00

Misc \$ 0.00

Tax \$ 0.00

Total \$ 588.87

OF LADING Original—Non—Negotiable—Domestic

's Excavating & Topsoil, Inc. Carrier

Shipper's # AF59-05

Agent's No. 7A-555

Effect on the date of the issue of this Bill of Lading.

Johnson City, NY from AFCEE

7/9/05

I warrant, of contents of packages unknown to me, contained and destined as shown above, when said company (the word company being understood throughout this contract as meaning any person or corporation in possession and disposition of it on its own interest, water line, highway route or route, or within the territory of its highway operations, otherwise to deliver to another carrier on the route to said destination, it is mutually agreed, as to each carrier, as to each party at any time interested in it or any of its property, that every service to be performed hereunder shall be subject to all the conditions not prohibited by law, whether printed or written, herein contained, including but not limited to the following:

(Mail or street address of consignee - For purposes of notification only.)

City Nanticoke Landfill

Binghamton

State of NY

Zip Code 13905 County of Broome

City

Delivering Boland's Excavating Vehicle

#17W AIRPORT RD

Carrier & Topsoil, Inc. or Car Initial No. 4A

to: WASTE PERMIT PART 364 # 7A-555

C. O. D. charge to be paid by ☐ Shipper ☐ Consignee

Street \_\_\_\_\_ City \_\_\_\_\_ State \_\_\_\_\_

Special Marks, and Exceptions

Weight (Sub. to Car.)

Class or Rate

Check Column

ED SOIL  
DOUS)

30TN

**RECEIVED**  
JUL 09 2005  
BROOME COUNTY  
NANTICOKE LANDFILL

T 364

Subject to Section 7 of conditions, if this shipment is to be delivered to the consignee without recourse on the consignor, the consignor shall sign the following statements:

The carrier shall not make delivery of this shipment without payment of freight and all other lawful charges.

(Signature of Consignor.)

If charges are to be prepaid, write or stamp here, "TO BE PREPAID."

Received \$ \_\_\_\_\_ to apply to prepayment of the charges on the property described hereon.

Agent or Cashier

Per \_\_\_\_\_  
(the signature here acknowledges only the amount Prepaid.)

Charges Advanced:

\$ \_\_\_\_\_

Signature of shipper must be accompanied by the signature of the carrier

ASC/ENV John D. Sawyer

Shipper, Per

[Signature]

Agent, Per

1

Permanent post-office address of shipper.

(This Bill of Lading is to be signed by the shipper and agent of the carrier issuing same.)

**Bill of Lading**

IG Original — ~~Non~~ Negotiable — Domestic

Shipper's # APP59-0

**ating & Topsoil, Inc.** Carrier

Agent's No. 7A-555

the issue of this Bill of Lading.

**n City, NY** from **AFCEE**

7/8/2005

Shippers who are not carriers and do not own or operate the vehicle being transported throughout the contract as moving any person or corporation in possession of the vehicle, water line, highway route or route, or within the territory of its highway operations, shall be subject to the carrier's terms and conditions. It is mutually agreed that each carrier has accepted in all or any of said property, that every service to be performed hereunder shall be subject to all the conditions not prohibited by law, whether printed or written, herein contained, including the

(Mail or street address of consignee - For purposes of notification only.)

**oke Landfill**

**inghamton** State of **NY** Zip Code **13905** County of **Broome**

**REPORT RD** Delivering **Boland's Excavating Vehicle**  
Carrier **& Topsoil, Inc.** or Car Initial **No.**

**IE PERMIT PART 364 # 7A-555**

C. O. D. charge to be paid by ☐ Shipper ☐ Consignee

**reet** City **State**

Exceptions	Weight (Sub. to Car.)	Class or Rate	Check Column
	<b>10 TN</b>		

Subject to Section 7 of conditions, if this shipment is to be delivered to the consignee without recourse on the consignor, the consignor shall sign the following statements:  
The carrier shall not make delivery of this shipment without payment of freight and all other lawful charges.

(Signature of Consignor.)

If charges are to be prepaid, write or stamp here, "TO BE PREPAID."

Received \$ to apply to prepayment of the charges on the property described hereon.

Agent or Cashier

Per (the signature here acknowledges only the amount Prepaid.)

Charges Advanced:

\$

**RECEIVED**  
**8 2005**  
**BROOME COUNTY**  
**NANTICOK LANDFILL**

\*Broome County Landfill  
\*286 Knapp Road Tel: 607-763-4434

Date : 07/08/2005 SCALE #1  
Time : 02:31PM Ticket #713066

Truck ID: 007202 ROFF/TLR ID:

Customer ID: 0072  
Customer Desc: BOLAND'S EXCAVATING & TOPS  
OIL

Material ID: CS  
Material Desc: CONTAMINATED SOIL

Gross : 33.620LBS  
Tare : 15.160LBS  
Net : 18.460LBS

Total Tons: 9.23 Price/Ton: \$ 27.00

Material Total \$ 249.21  
Miscellaneous \$ 0.00

Please Pay This Amount \$ 249.21

Weighmaster: CIS

-Thank You

If the shipment moves between two ports by a carrier by water, the law requires that the bill of lading shall state whether it is "carrier's or shipper's weight." NOTE - Where the rate is dependent on value, shippers are required to state specifically in writing the agreed or declared value of the property.

The agreed or declared value of the property is hereby specifically stated by the shipper to be not exceeding

ASC/ENV John A. Napier

Shipper, Per

John A. Napier

Agent, Per

Permanent post-office address of shipper.

(This Bill of Lading is to be signed by the shipper and agent of the carrier issuing same.)

**Bill of Lading**

Broome County Landfill

Ticket No : 713145

7/9/2005

Customer: 0072

Material: CONTAMINATED SOI

Truck ID: 007204

Trailer:

Gross: 32760

Tare: 16180

Net: 16580

-8.290\*1A

Material \$ 223.83  
Delivery \$ 0.00  
Misc \$ 0.00  
Tax \$ 0.00

Total \$ 223.83

OF LADING Original—Non Negotiable—Domestic  
's Excavating & Topsoil, Inc. Carrier

Effect on the date of the issue of this Bill of Lading.

Shipper's # **AFP59-0**  
Agent's No. **7A-555**

Johnson City, NY from AFCEE

7/9/05

I warrant, of contents of packages hereunto marked, consigned and destined as shown below, which said company being well-informed throughout this contract as to the nature of the goods in possession and disposition, if on its own railroad, water line, highway route or routes, or within the territory of its highway operations, otherwise to deliver to another carrier on the route to said destination, it is mutually agreed, as to each carrier and for himself and his assigns

ty Nanticoke Landfill

(Mail or street address of consignee - For purposes of notification only.)

Binghamton

City

State of NY

Zip Code 13905 County of Broome

117W / AIRPORT RD Delivering Boland's Excavating Vehicle  
Carrier & Topsoil, Inc. or Car Initial No. 3

to: WASTE PERMIT PART 364 # 7A-555

C. O. D. charge to be paid by { Shipper ☐  
Consignee ☐

Street City State

Special Marks, and Exceptions

Weight  
(Sub. to Car.)

Class  
or Rate

Check  
Column

D SOIL  
DOUS)

10TN

1364

Subject to Section 7 of conditions, if this shipment is to be delivered to the consignee without recourse on the consignor, the consignor shall sign the following statements:  
The carrier shall not make delivery of this shipment without payment of freight and all other lawful charges.

(Signature of Consignor.)

If charges are to be prepaid, write or stamp here, "TO BE PREPAID."

Received \$ \_\_\_\_\_ to apply to prepayment of the charges on the property described hereon.

Agent or Cashier

Per \_\_\_\_\_  
(the signature here acknowledges only the amount Prepaid.)

Charges Advanced:

specifically stated by the shipper to be not exceeding

ASC/ENV John D. Napier

Shipper, Per

Agent, Per

Permanent post-office address of shipper,

(This Bill of Lading is to be signed by the shipper and agent of the carrier issuing same.)

Bill of Lading



Broome County Landfill

Ticket No : 713207

7/9/2005

Customer: 0072

Material: CONTAMINATED SOI

Truck ID: 007202

Trailer:

Gross: 33400

Tare: 15260

Net: 18140

9.070 tn

Material \$ 244.89  
Delivery \$ 0.00  
Misc \$ 0.00  
Tax \$ 0.00  
Total \$ 244.89

OF LADING Original—Negotiable—Domestic

's Excavating & Topsoil, Inc. Carrier

Shipper's # A7P59-C

Agent's No. 7A-555

Effect on the date of the issue of this Bill of Lading.

Johnson City, NY from AFCEE

of transfer, of contents of packages or contents marked, consigned and destined as shown above, which said company (the word company being understood throughout this contract as meaning any person or corporation in possession and control of the property) shall be responsible for the safe delivery of the property to the consignee at the destination named herein, it is mutually agreed, as to each carrier, that every service to be performed hereunder shall be subject to all the conditions not prohibited by law, whether printed or written, herein contained, including but not limited to the following:

(Mail or street address of consignee - For purposes of notification only.)

ity Nanticoke Landfill

Binghamton State of NY Zip Code 13905 County of Broome

City

Delivering Boland's Excavating Vehicle

+17W / AIRPORT RD Carrier & Topsoil, Inc. or Car Initial No. 7

to: WASTE PERMIT PART 364 # 7A-555

C. O. D. charge to be paid by { Shipper ☐ Consignee ☐

Subject to Section 7 of conditions, if this shipment is to be delivered to the consignee without recourse on the consignor, the consignor shall sign the following statements:

The carrier shall not make delivery of this shipment without payment of freight and all other lawful charges.

(Signature of Consignor)

If charges are to be prepaid, write or stamp here, "TO BE PREPAID."

Received \$ to apply to prepayment of the charges on the property described hereon.

Agent or Cashier

Per (the signature here, as acknowledged, only the amount Prepaid)

Charges Advanced

\$

law requires that the bill of lading shall state whether it is "carrier's or shipper's weight." NOTE - Where the rate is dependent on declared value of the property.

the value of the property is hereby specifically stated by the shipper to be not exceeding

ASC/ENV John A. Sawyer

Shipper, Per

Agent, Per

Permanent post-office address of shipper.

(This Bill of Lading is to be signed by the shipper and agent of the carrier issuing same.)

Bill of Lading

RECEIVED  
JUL 09 2005  
BROOME COUNTY  
NANTICOKE LANDFILL  
1

G Original — Negotiable — Domestic

Shipper's #

AFP59

ating & Topsoil, Inc. Carrier

Agent's No.

7A-555

the issue of this Bill of Lading.

City, NY from AFCEE

7/9/05

charges (freight) incurred, consigned and destined as shown below, which said company the word company being understood throughout this contract as meaning any person or corporation in possession of the property, whether by bill of lading, warehouse receipt, or other document, or when the property is in transit, whether by water, highway, or other mode of transportation, it is mutually agreed, as to each carrier, that every service to be performed hereunder shall be subject to all the conditions not prohibited by law, whether printed or written, herein contained, including but not limited to the following:

(Mail or street address of consignee — For purposes of notification only.)

oke Landfill

ghamton State of NY Zip Code 13905 County of Broome

Delivering Boland's Excavating Vehicle  
Carrier & Topsoil, Inc. or Car Initial No. 41

PERMIT PART 364 # 7A-555

C. O. D. charge to be paid by

Shipper ☐  
Consignee ☐

Subject to Section 7 of conditions, if this shipment is to be delivered to the consignee without recourse on the consignor, the consignor shall sign the following statements:  
The carrier shall not make delivery of this shipment without payment of freight and all other lawful charges.

(Signature of Consignor.)

If charges are to be prepaid, write or stamp here, "TO BE PREPAID."

Received \$ to apply to prepayment of the charges on the property described hereon.

Agent or Cashier

Per (the signature here acknowledges only the amount Prepaid.)

Charges Advanced:

\$

City State

ceptions	Weight (Sub. to Cor.)	Class or Rate	Check Column
	30 TH		

RECEIVED  
JUL 11 2005  
BROOME COUNTY  
NANTICOKE LANDFILL

\*Broome County Landfill  
\*286 Knapp Road Tel: 607-763-4434

Date : 07/11/2005  
Time : 08:00AM

SCALE #1  
Ticket #713388

Truck ID: 007207 ROFF/TLR ID: 007201

Customer ID: 0072  
Customer Desc: BOLAND'S EXCAVATING & TOPS OIL

Material ID: C5  
Material Desc: CONTAMINATED SOIL

Gross : 83.720LBS  
Tare : 32.260LBS  
Net : 51.460LBS

Total Tons: 25.73 Price/Ton: \$ 27.00

Material Total \$ 694.71  
Miscellaneous \$ 0.00

Please Pay This Amount \$ 694.71

Weighmaster: CIS

-Thank You

If the shipment moves between two ports by a carrier by water, the law requires that the bill of lading shall state whether it is "carrier's or shipper's weight." NOTE — Where the rate is dependent on value, shippers are required to state specifically in writing the agreed or declared value of the property.

The agreed or declared value of the property is hereby specifically stated by the shipper to be not exceeding

ASC/ENV John D. Saper

Shipper, Per

Per

Agent, Per

Permanent post-office address of shipper.

(This Bill of Lading is to be signed by the shipper and agent of the carrier issuing same.)

Bill of Lading

1

ING Original—Non Negotiable—Domestic

Excavating & Topsoil, Inc. Carrier

Shipper's # **APP59-**

Agent's No. **7A-555**

of the issue of this Bill of Lading.

on City, NY from AFCEE

of packages or contents marked, packaged and delivered as shown above, when said company (the word company being understood throughout the contract as meaning any person or corporation in possession of such interest, ware and highway route or route, or when the territory of its highway operations, otherwise to deliver to another carrier on the route to said destination, it is mutually agreed, as to each carrier any time interested in all or any of said property, that every service to be performed hereunder shall be subject to all the conditions not prohibited by law, whether printed or written, herein contained, including design.

(Mail or street address of consignee - For purposes of notification only.)

Nanticoke Landfill

inghamton State of NY Zip Code **13905** County of Broome

Delivering Boland's Excavating Vehicle

AIRPORT RD Carrier & Topsoil, Inc. or Car Initial No. **32**

STATE PERMIT PART 364 # **7A-555**

C. O. D. charge to be paid by ☐ Shipper ☐ Consignee

Street City State

Weight (Sub. to Cor.)	Class or Rate	Check Column
22 TN		
<div style="border: 1px solid black; padding: 5px; text-align: center;"> <b>RECEIVED</b>  <b>JUL 11 2005</b>  BROOME COUNTY  NANTICOKE LANDFILL </div>		

Subject to Section 7 of conditions, if this shipment is to be delivered to the consignee without recourse on the consignor, the consignor shall sign the following statements:

The carrier shall not make delivery of this shipment without payment of freight and all other lawful charges.

(Signature of Consignor.)

If charges are to be prepaid, write or stamp here, "TO BE PREPAID."

Received \$ to apply to prepayment of the charges on the property described hereon.

Agent or Cashier

Per (the signature here acknowledges only the amount Prepaid.)

Charges Advanced:

\$

\*Broome County Landfill  
\*286 Knapp Road Tel: 607-763-4434

Date : 07/11/2005 SCALE #1  
Time : 08:03AM Ticket #713390

Truck ID: 007206 ROFF/TLR ID:

Customer ID: 0072  
Customer Desc: BOLAND'S EXCAVATING & TOPSOIL

Material ID: CS  
Material Desc: CONTAMINATED SOIL

Gross : 74.600LBS

Tare : 27.280LBS

Net : 47.320LBS

Total Tons: 23.66 Price/Tons: \$ 27.00

Material Total \$ 638.82

Miscellaneous \$ 0.00

Please Pay This Amount \$ 638.82

Weighmaster: CIS

-Thank You

If the shipment moves between two ports by a carrier by water, the law requires that the bill of lading shall state whether it is "carrier's or shipper's weight." NOTE - Where the rate is dependent on value, shippers are required to state specifically in writing the agreed or declared value of the property.

The agreed or declared value of the property is hereby specifically stated by the shipper to be not exceeding

ASC/ENV John D. Napier

Shipper, Per

Agent, Per **DB**

Permanent post-office address of shipper.

(This Bill of Lading is to be signed by the shipper and agent of the carrier issuing same.)

Bill of Lading

Original — Non Negotiable — Domestic

Excavating & Topsoil, Inc. Carrier

Shipper's # **AFPEA**

Agent's No. **7A-555**

\*Broome County Landfill:  
\*286 Knapp Road Tel: 607-763-4434

Date : 07/11/2005 SCALE #1  
Time : 07:23AM Ticket #713369

Truck ID: 007202 ROFF/TLR ID:

Customer ID: 0072  
Customer Desc: BOLAND'S EXCAVATING & TOPSOIL

Material ID: CS  
Material Desc: CONTAMINATED SOIL

Gross : 33.940LBS

Tare : 14.960LBS

Net : 18.980LBS

Total Tons: 9.49 Price/Ton: \$ 27.00

Material Total \$ 256.23

Miscellaneous \$ 0.00

Please Pay This Amount \$ 256.23

Weighmaster: CIS

-Thank You

of the issue of this Bill of Lading.

in City, NY from AFCEE

packages containing materials, substances and/or articles as shown below, which shall company (the word company being understood throughout this bill of lading as meaning any person or corporation in possession and control, whether by title, possession, or otherwise, of the property, shall be deemed to be the shipper for the purpose of this bill of lading, and shall be subject to all the conditions not prohibited by law, whether printed or written, herein contained, including those of the carrier, and shall be deemed to be the shipper for the purpose of this bill of lading, and shall be subject to all the conditions not prohibited by law, whether printed or written, herein contained, including those of the carrier.

(Mail or street address of consignee — For purposes of notification only.)

coke Landfill

inghamton State of NY Zip Code 13905 County of Broome

Delivering Boland's Excavating Vehicle  
AIRPORT RD Carrier & Topsoil, Inc. or Car Initial No. 7

IE PERMIT PART 364 # 7A-555

C. O. D. charge to be paid by Shipper ☐ Consignee ☐

Street City State

Exceptions	Weight (Sub. to Car.)	Class or Rate	Check Column
IL )	9 TN		

Subject to Section 7 of conditions, if this shipment is to be delivered to the consignee without recourse on the consignor, the consignor shall sign the following statements:  
The carrier shall not make delivery of this shipment without payment of freight and all other lawful charges.

(Signature of Consignor.)

If charges are to be prepaid, write or stamp here, "TO BE PREPAID."

Received \$ to apply to prepayment of the charges on the property described hereon.

Agent or Cashier

Per (the signature here acknowledges only the amount Prepaid.)

Charges Advanced:

\$

If the shipment moves between two ports by a carrier by water, the law requires that the bill of lading shall state whether it is "carrier's or shipper's weight." NOTE — Where the rate is dependent on value, shippers are required to state specifically in writing the agreed or declared value of the property.

The agreed or declared value of the property is hereby specifically stated by the shipper to be not exceeding

ASC/ENV John D. Sneyden Shipper, Per Agent, Per

Permanent post-office address of shipper.

(This Bill of Lading is to be signed by the shipper and agent of the carrier issuing same.)

Bill of Lading

1