

Painting Gladding Cordage's Monitoring Wells

Monitoring Well Inventory, 5/30/2007

A click on a photo opens the photo at full resolution in a new browser window.

Photos with Notes

Photo

Description



TW-1 before clearing and preparation



TW-1 after painting



TW-2S before



TW-2d before



TW-2s and TW-2D after painting



TW-3i before



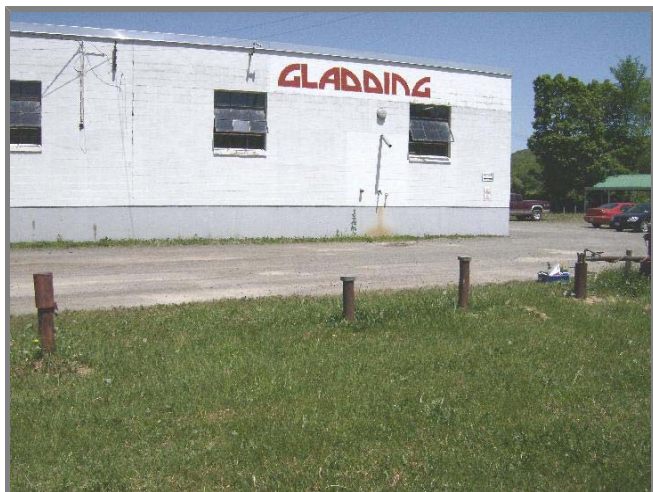
TW-3i after painting



Combined shot of TW-3i, TW-3s, and TW-3d before



Combined shot of TW-3i, TW-3s, and TW-3d after



Combined "before" shot, of TW-5d on left, TW-5i in middle and TW-5s on right.



TW-5i before



TW-5s before



TW-5s has a rust hole at the base of the protective casing, not very visible in this photo, but the hole is oval-shaped, about two inches across.



Combined "after" shot, from the other side, of TW-5s on left, TW-5i in middle and TW-5d on right.



The TW-7 series "before"



The TW-7 series after painting. Order: s, i and d on right. I did not sound these wells. I opened it to see if there was a name inside the pro casing but there was not. TW-7d's lock is in place but not locked. I could not close it-- too rusty. I had some doubt as to the names of these wells. If I have mis-labelled them, the "i" or "d" will have to be re-painted as appropriate.



TW-7d before



TW-7s after



TW-7i and TW-7d after



TW-9d and TW-9i before



TW-9d and TW-9i after



TW-9d after



TW-9i after



TW-6s left, TW-6d center, and TW-6i right, "before" shot



TW-6s before



TW-6s after



TW-6d before



TW-6d after



TW-6i before



TW-6i after



TW-10d before



TW-10d after



TW-14i before. I painted this flush cover but did not label it and did not photograph it after painting.



Location of TW-14i showing church building proximity in back, across the Gladding driveway



TW-12i and TW-12d (dark in back) "before" shot



TW-12i and TW-12d "after" shot