

Gladding Cordage Well Rehab. and Panel Wiring Work

Monitoring Well Inventory. Written 10/9/2007 by WB Welling, EG 2. 10/04/2007

Photos with Notes

Photo

Description



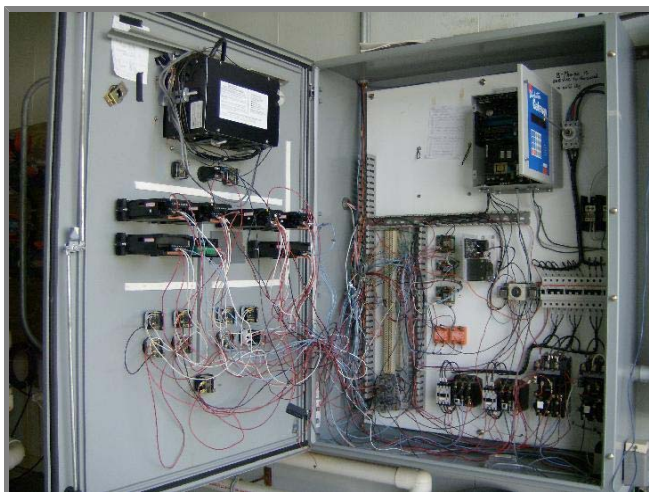
Work began to place the flush wells inside proper road boxes with concrete collars. Jason from AzTech and Jeremy from Malcolm Pirnie were at work when we arrived at approximately 10:30AM on 10/04/2007.



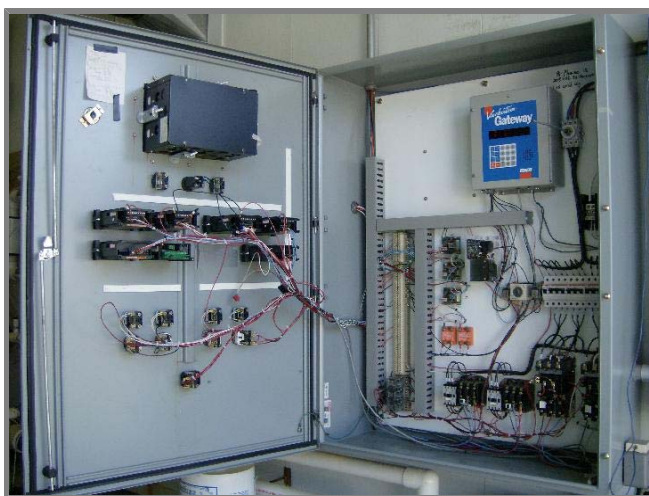
TW-5 series



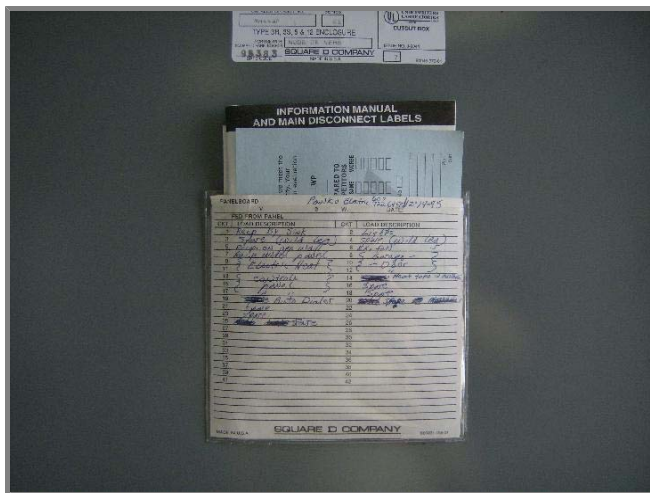
A couple of other wells required work this day. TW-5S shown in this photo has a rust hole in the protective casing. AzTech used the hole with a lever and jacked the casing off the well. They replaced the casing with a new stick-up.



One of the tasks of the day was to clean up the wiring in the control panel. At day's end the inside was neat as a pin.



This is the "after" shot. The reason for the re-wiring and eventual cleanup was to simplify the controls to make the system operate more reliably.



Layout of the inside of the circuit box.



Fron panel view



A mobile home was transported past the plant and up Ridge road. As the farm tractor pulled the trailer around the corner we noticed that only one of the four tires on the right side was any good! Two were badly under inflated and one rim dangling in mid-air in the back on the right was missing the tire. They made it a good way up Ridge road when we happened upon the house in the ditch with about six men working to right it.



Road edge chewed by a bare rim.



We had driven up Ridge road to photograph a few of the houses. Payson had received a call from one of the owners and we went up the street to do a little recon. We were driving a state car with a DEC logo so folks could see us.



Another home on Ridge Rd.



Another home on Ridge Rd.



Jeremy of Malcolm Pirnie on left, Payson Long on right putting a coat of paint on the vent enclosure.



TW-14d as photographed in 2005.

NYTM_X: 435804

NYTM_Y: 4722023



(Left) TW-14d, new roadbox and collar just emplaced on 10/4/2007. TW-14d is the well on the right in the above photo.



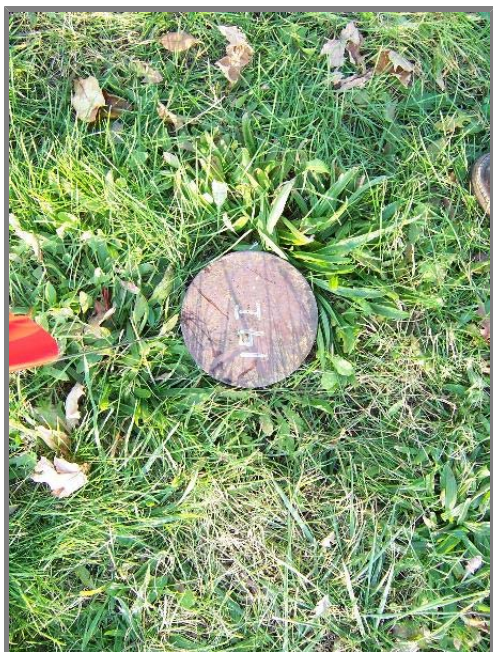
TW-14s in 2005.

NYTM_X: 435803

NYTM_Y: 4722021



(Left) TW-14s, new roadbox and collar just emplaced on 10/4/2007. TW-14s is the well on the left in the above photo.



TW-14i in 2005.

NYTM_X: 435806

NYTM_Y: 4722018



TW-14i, new roadbox and collar just emplaced on 10/4/2007. TW-14i is the well nearest the camera in the above photo.



The 14 Series in 2005. Almost impossible to see in 2005! Wells in this photo are marked by red flags and even they are hard to see!



The 14-Series wells in November 2005 when sampling bags were placed in the wells for annual sampling. TW-14D is on the right, TW-14I is closest to the camera. TW-14S is located near the flag on the left.



TW-4I is the only remaining well from this series which once also included TW-4S and TW-4D.



TW-4I



View of TW-14 wells looking in the direction of our treatment plant and the Otselic River.



TW-5I on left, TW-5S on right



TW-5 wells



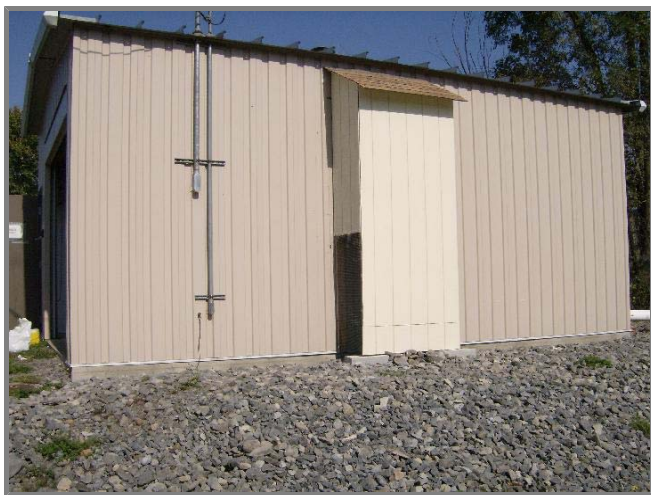
TW-5I



TW-5S



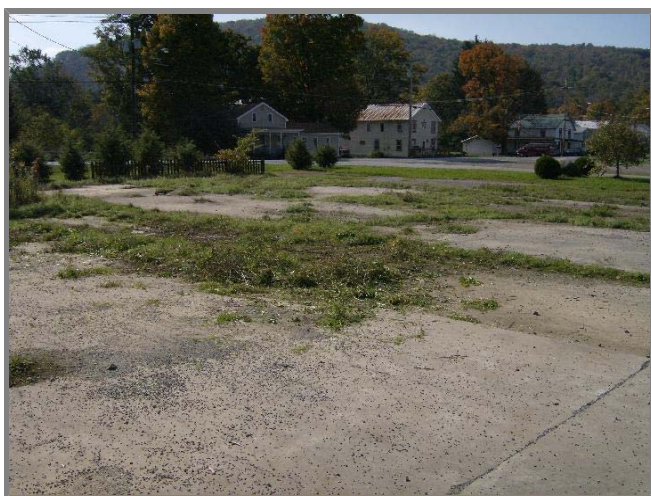
Parting shot of the open panel



painted enclosure after our second coat
which was applied 10/4/07



Enclosure



View across the lot. I cut the weeds with my
sythe.



View across the lot towards TW-14 series wells and the church.



Area in front of our treatment plant. Grass was cut in two minutes with Will's sythe, a.k.a., the "Amish weed wacker."



Three houses down from the plant was a house for sale at the time of our visit. It's a nice Victorian for \$32,000!



Looking in the window of the vacant house.