

APPENDIX S

CONSTRUCTION PHOTOS – IRON WALL PROJECT

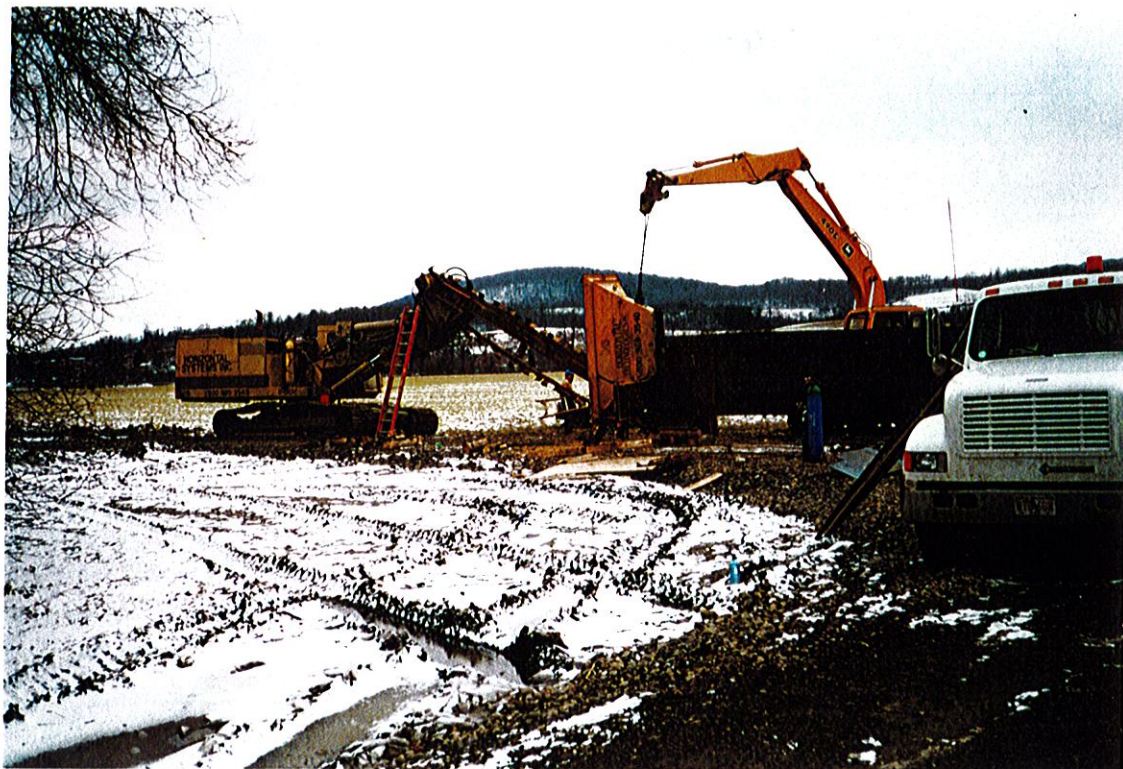






## EQUIPMENT ASSEMBLY

December 1997







## EQUIPMENT ASSEMBLY

December 1997







## EXCAVATION OF BENCH FOR 120-FT IRON WALL

December 1997







## EXCAVATION OF BENCH FOR 370-FT IRON WALL

December 1997







## TOPSOIL STOCKPILES

December 1997







## PLACING MATS FOR TRENCHING EQUIPMENT

December 1997







## PREPPING EQUIPMENT FOR TRENCHING

December 1997



## BEGINNING SOUTH END OF SHORT TRENCH







WALKING TRENCHER TO STARTING POINT – SHORT TRENCH



FILLING HOPPER WITH IRON







## EXCAVATING STARTING HOLE FOR SHORT TRENCH







GETTING HOPPER/TRENCH BOX VERTICAL – SHORT TRENCH







## TRANSFERRING IRON – SHORT TRENCH



## COMPLETION OF SHORT TRENCH







## TOPPING OFF TRENCH







## INSTALLING LONGER TRENCH







## INSTALLING LONGER TRENCH



## COMPLETING LONGER TRENCH/TOPPING OFF IRON







## BACKFILLING







## BACKFILLING



